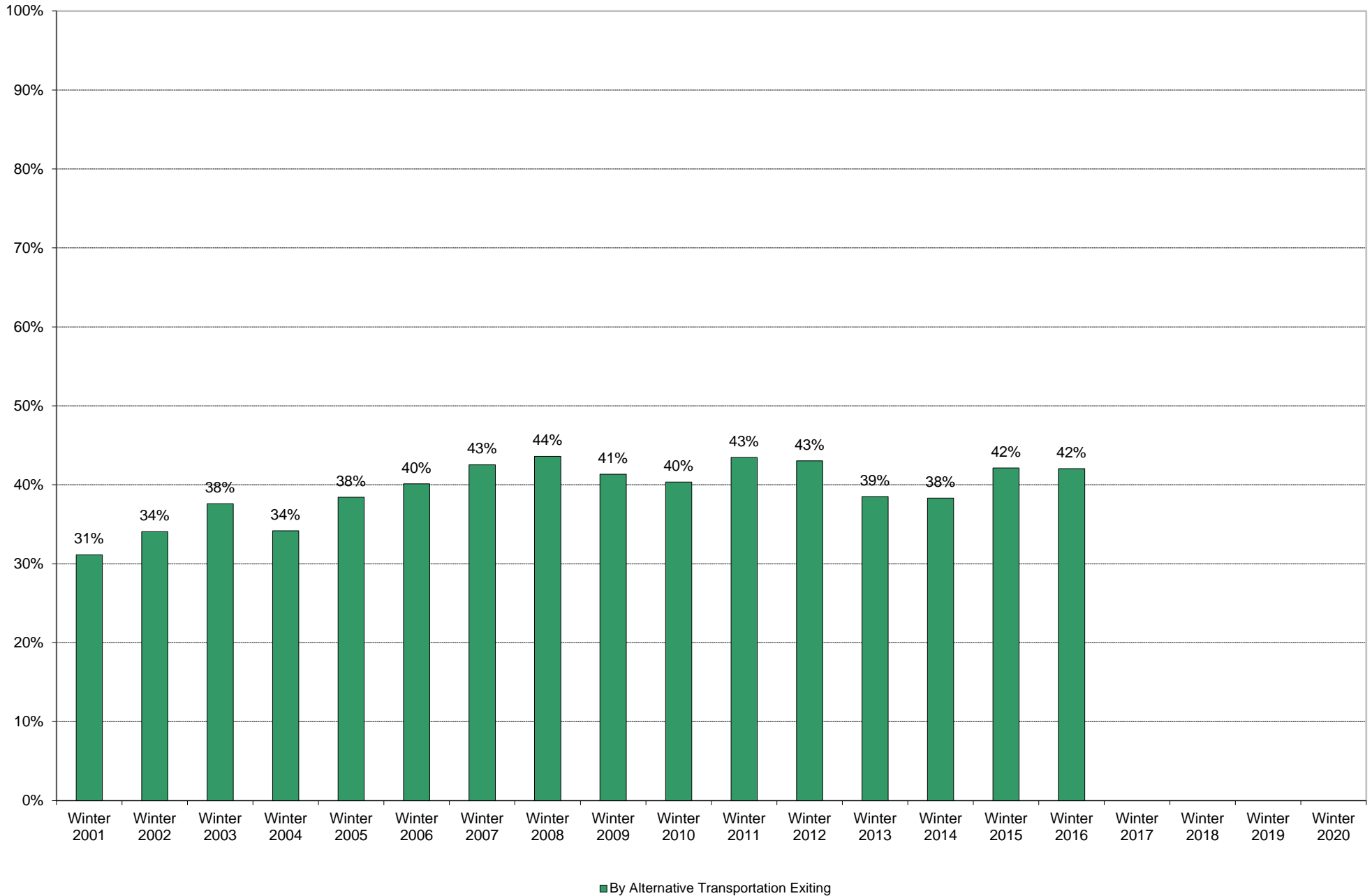
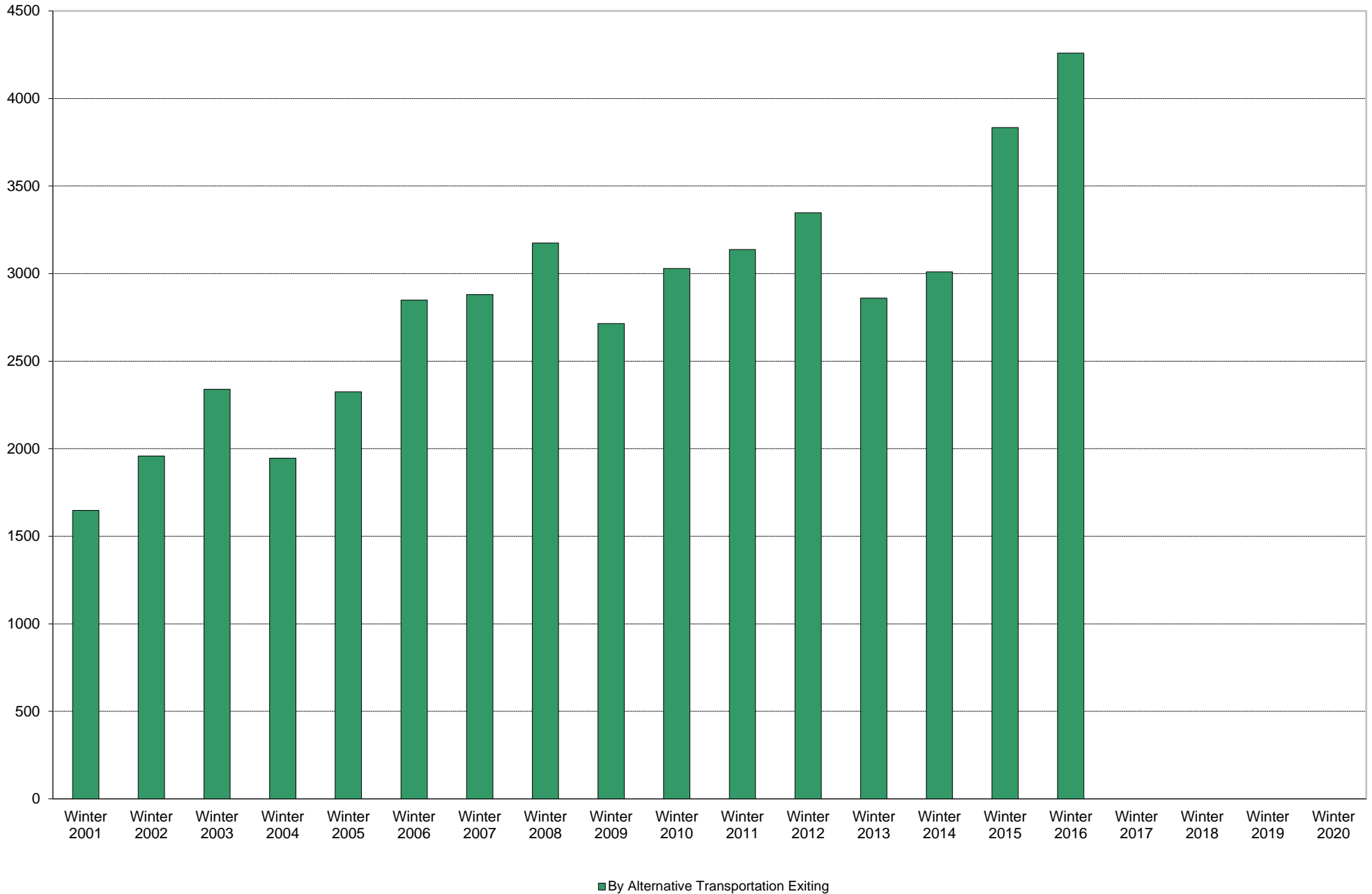


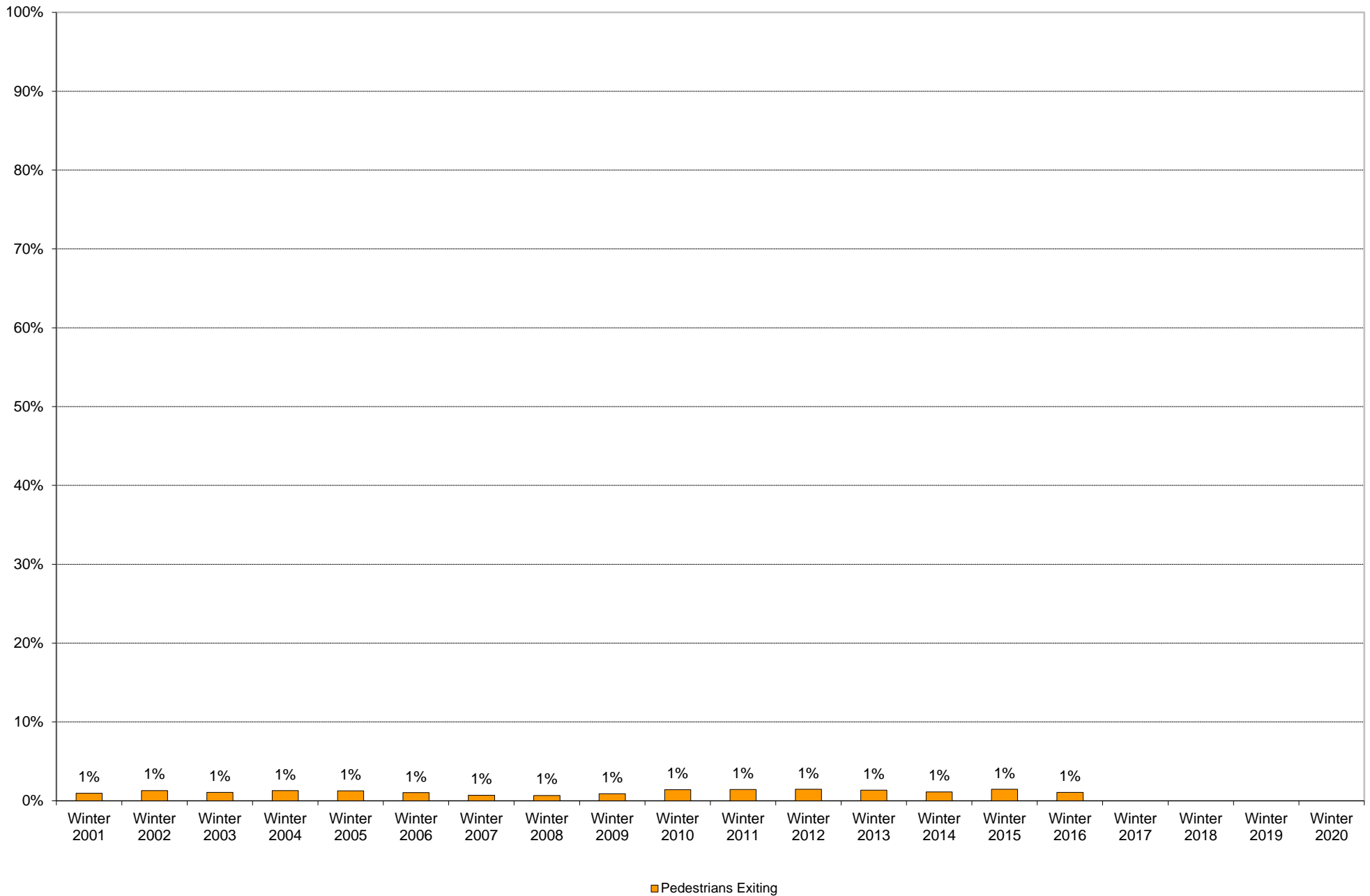
University of California, San Diego Survey of Pedestrian and Vehicular Traffic
Commuters Exiting on Typical Weekday
At Campus Point Drive: By Alternative Transportation: Percentage of Total Commuters



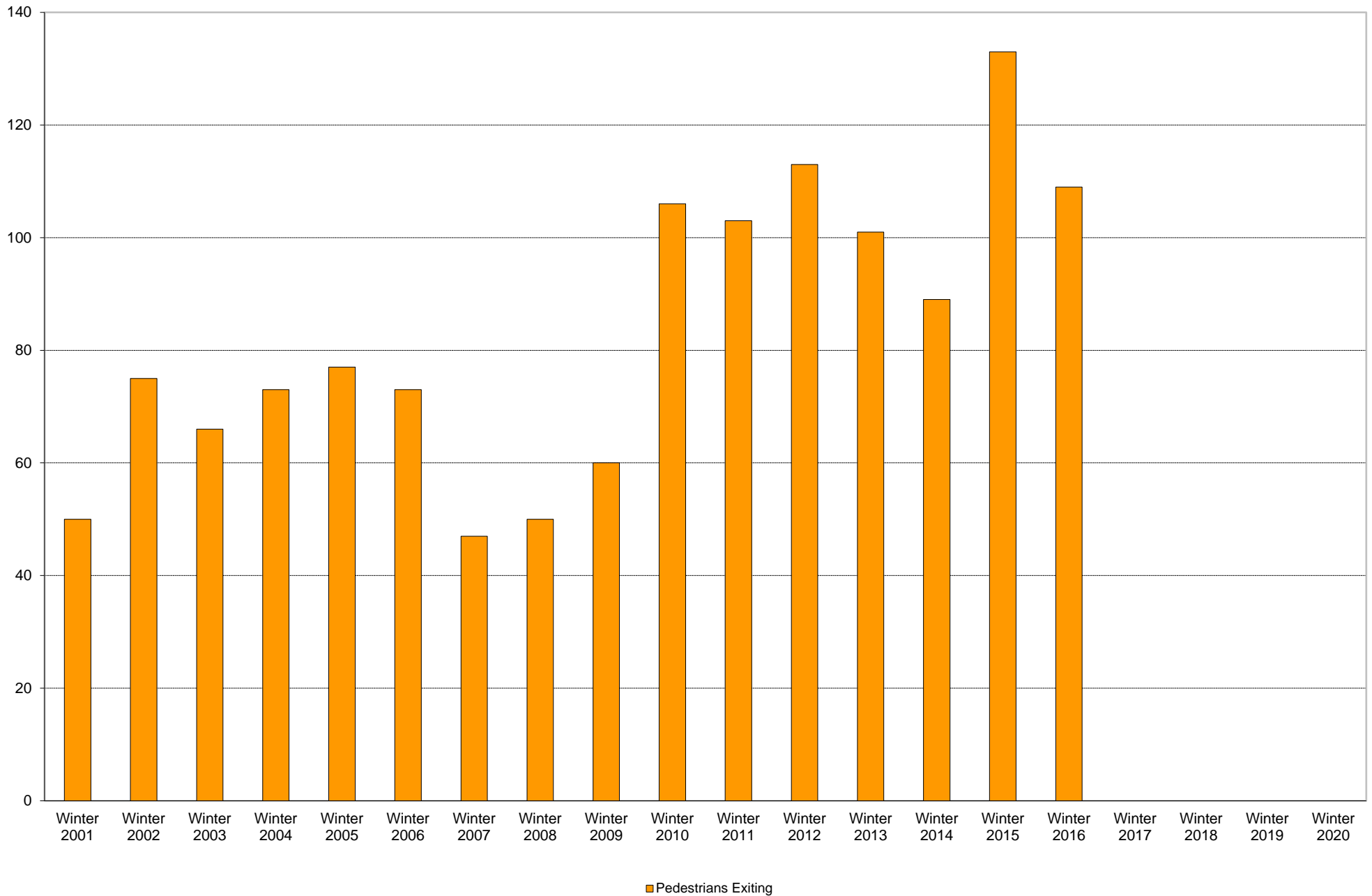
University of California, San Diego Survey of Pedestrian and Vehicular Traffic
Commuters Exiting on Typical Weekday
At Campus Point Drive: By Alternative Transportation: Volumes



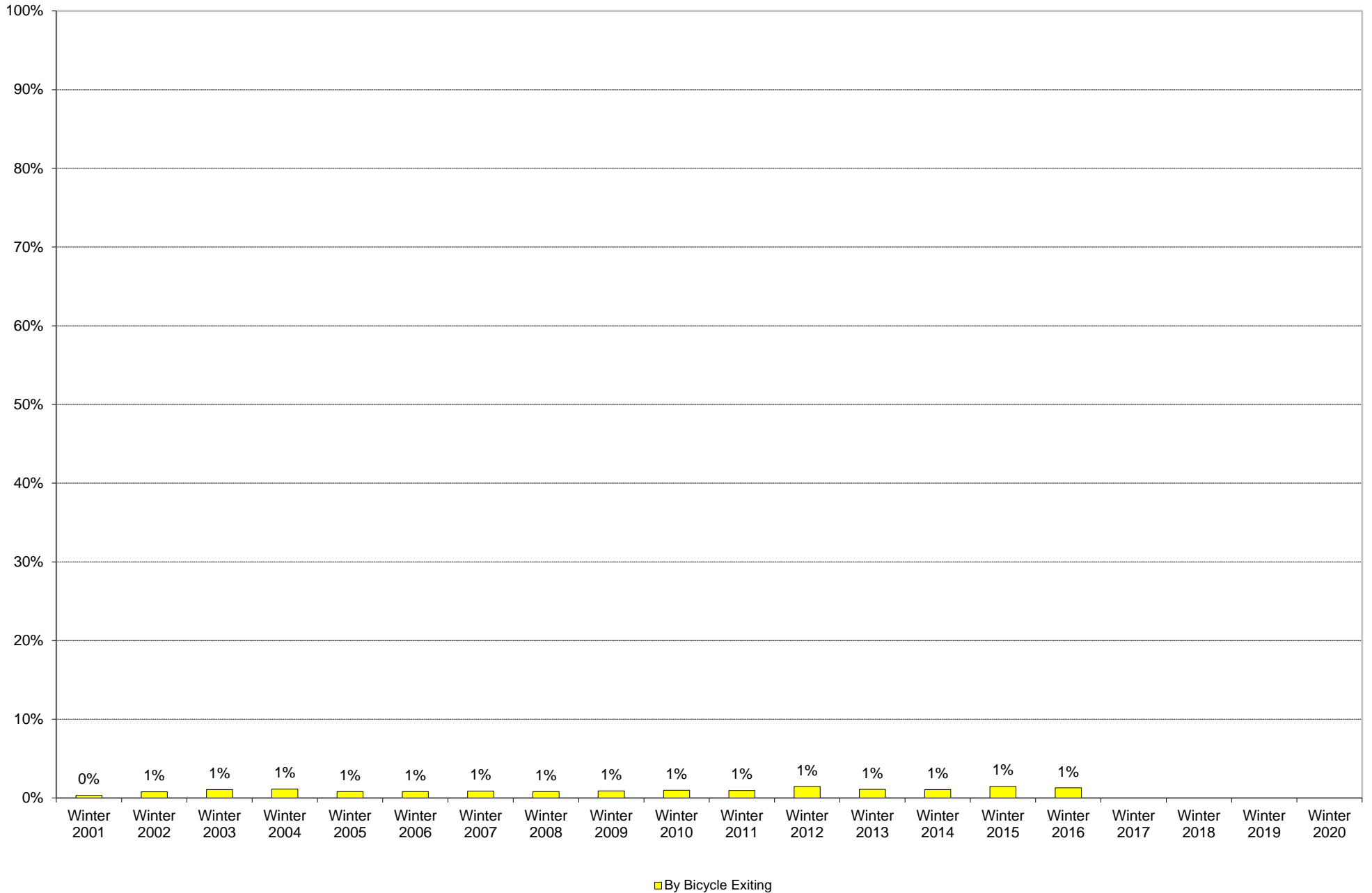
University of California, San Diego Survey of Pedestrian and Vehicular Traffic
Commuters Exiting on Typical Weekday
At Campus Point Drive: Pedestrians: Percentage of Total Commuters



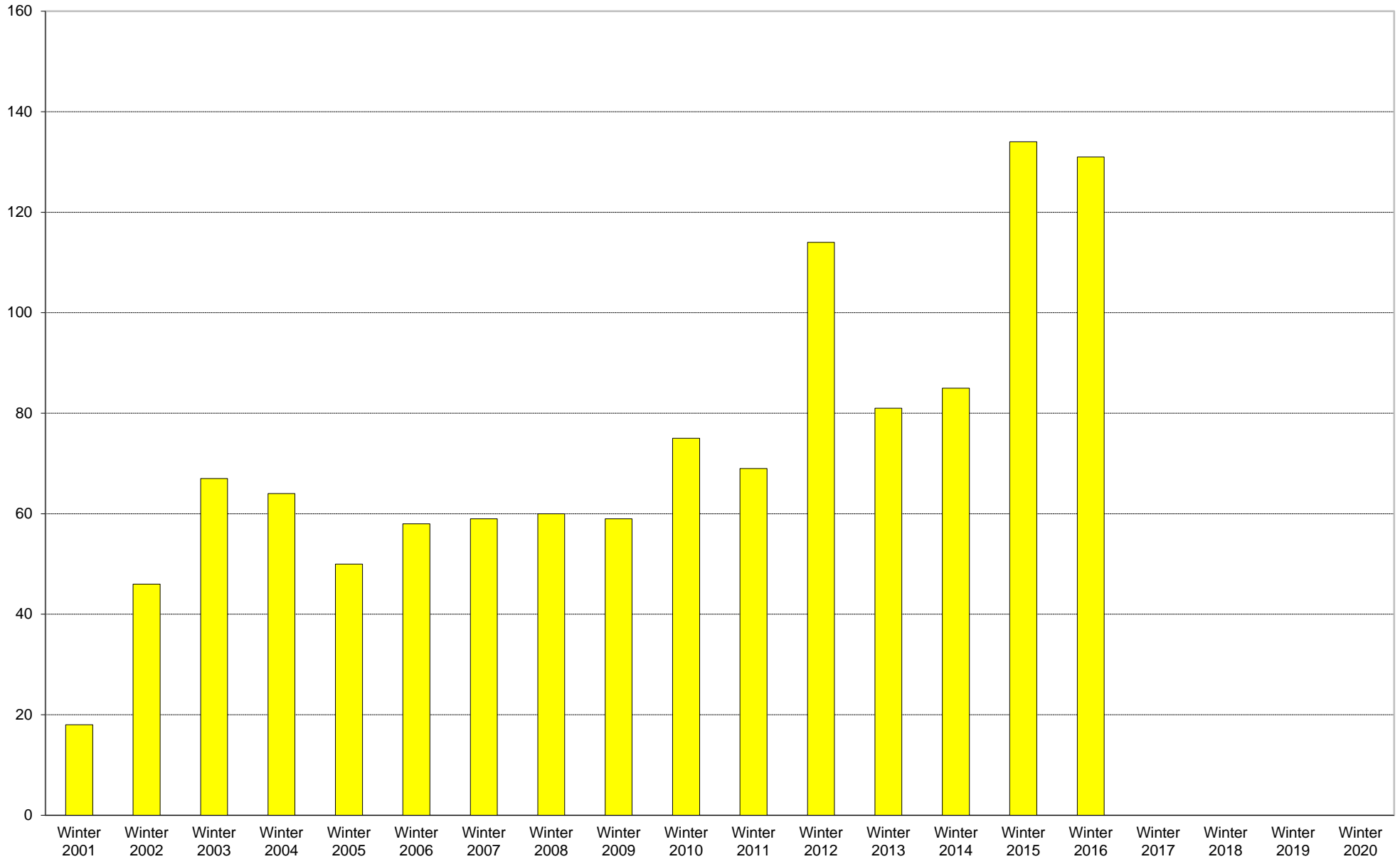
University of California, San Diego Survey of Pedestrian and Vehicular Traffic
Commuters Exiting on Typical Weekday
At Campus Point Drive: Pedestrians: Volumes



University of California, San Diego Survey of Pedestrian and Vehicular Traffic
Commuters Exiting on Typical Weekday
At Campus Point Drive: By Bicycle: Percentage of Total Commuters

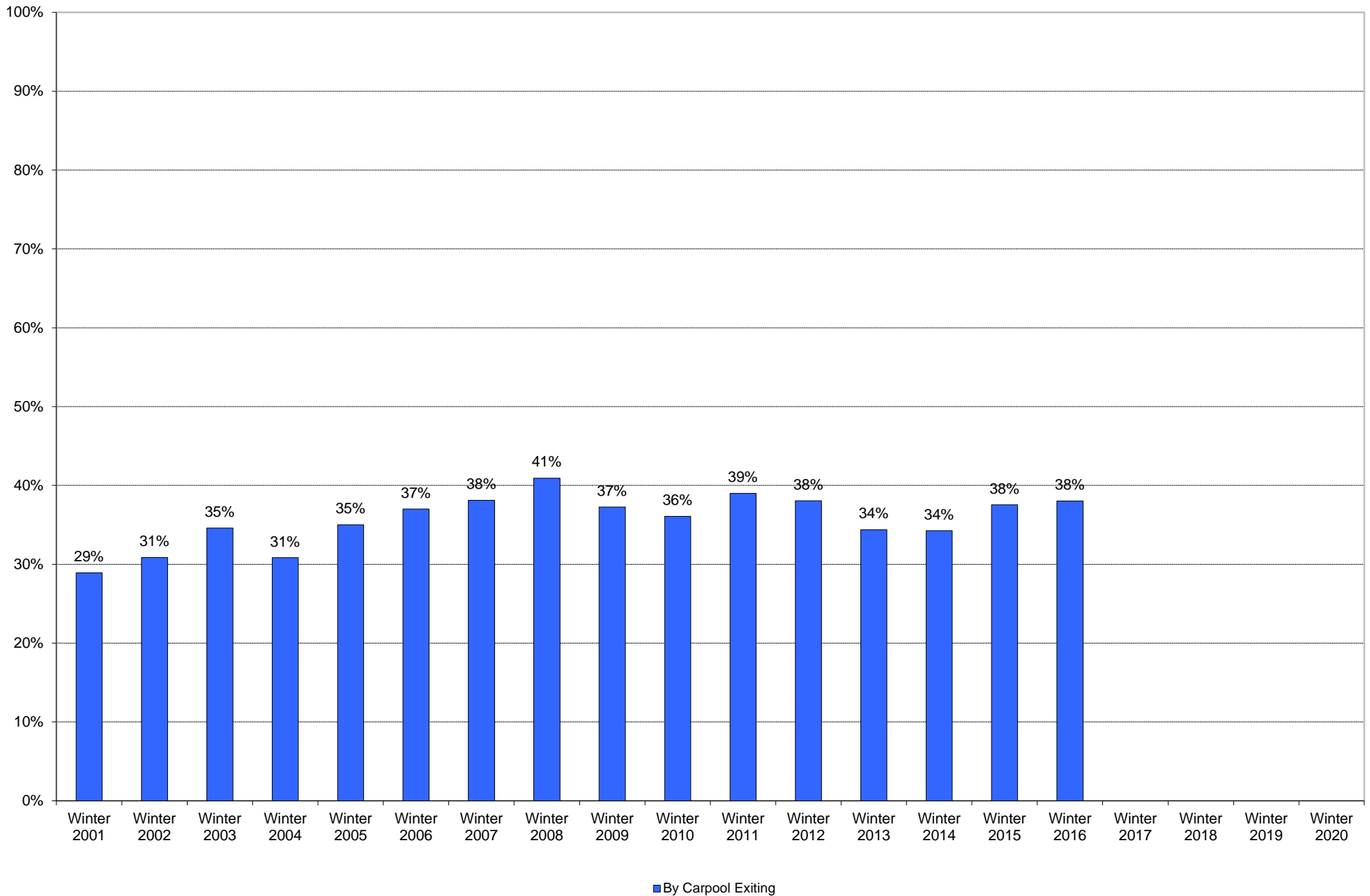


University of California, San Diego Survey of Pedestrian and Vehicular Traffic
Commuters Exiting on Typical Weekday
At Campus Point Drive: By Bicycle: Volumes

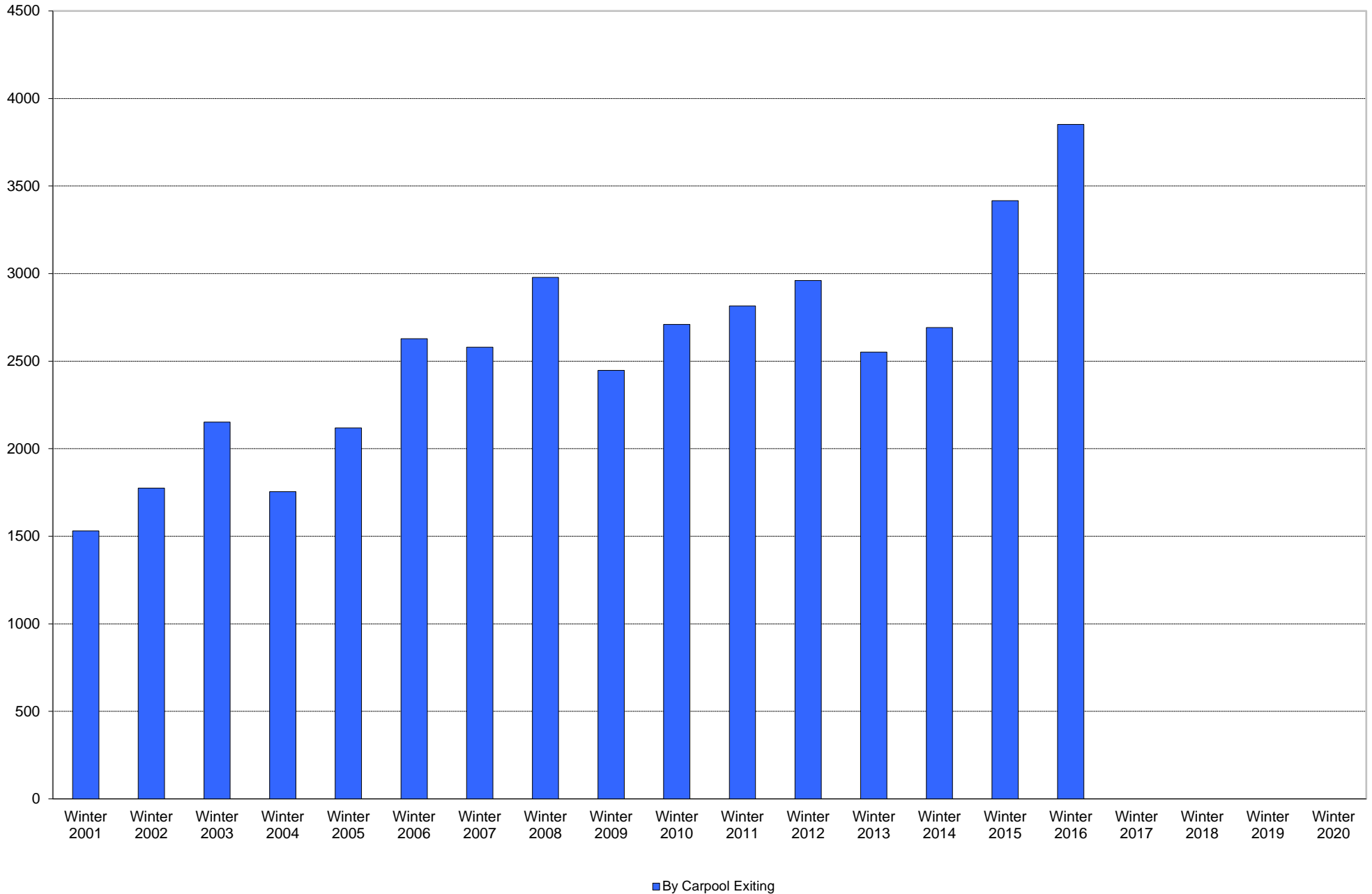


By Bicycle Exiting

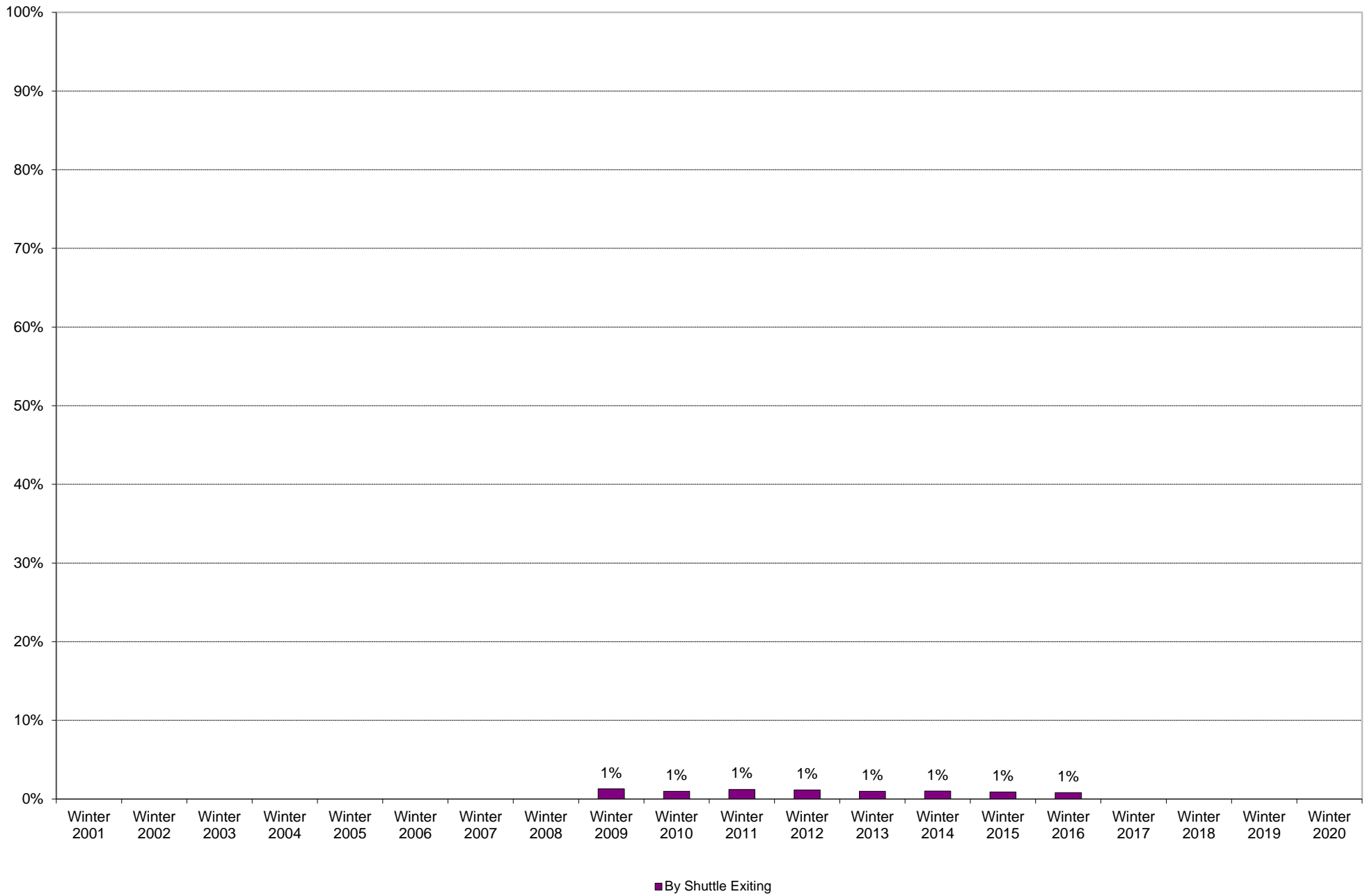
University of California, San Diego Survey of Pedestrian and Vehicular Traffic
Commuters Exiting on Typical Weekday
At Campus Point Drive: By Carpool: Percentage of Total Commuters



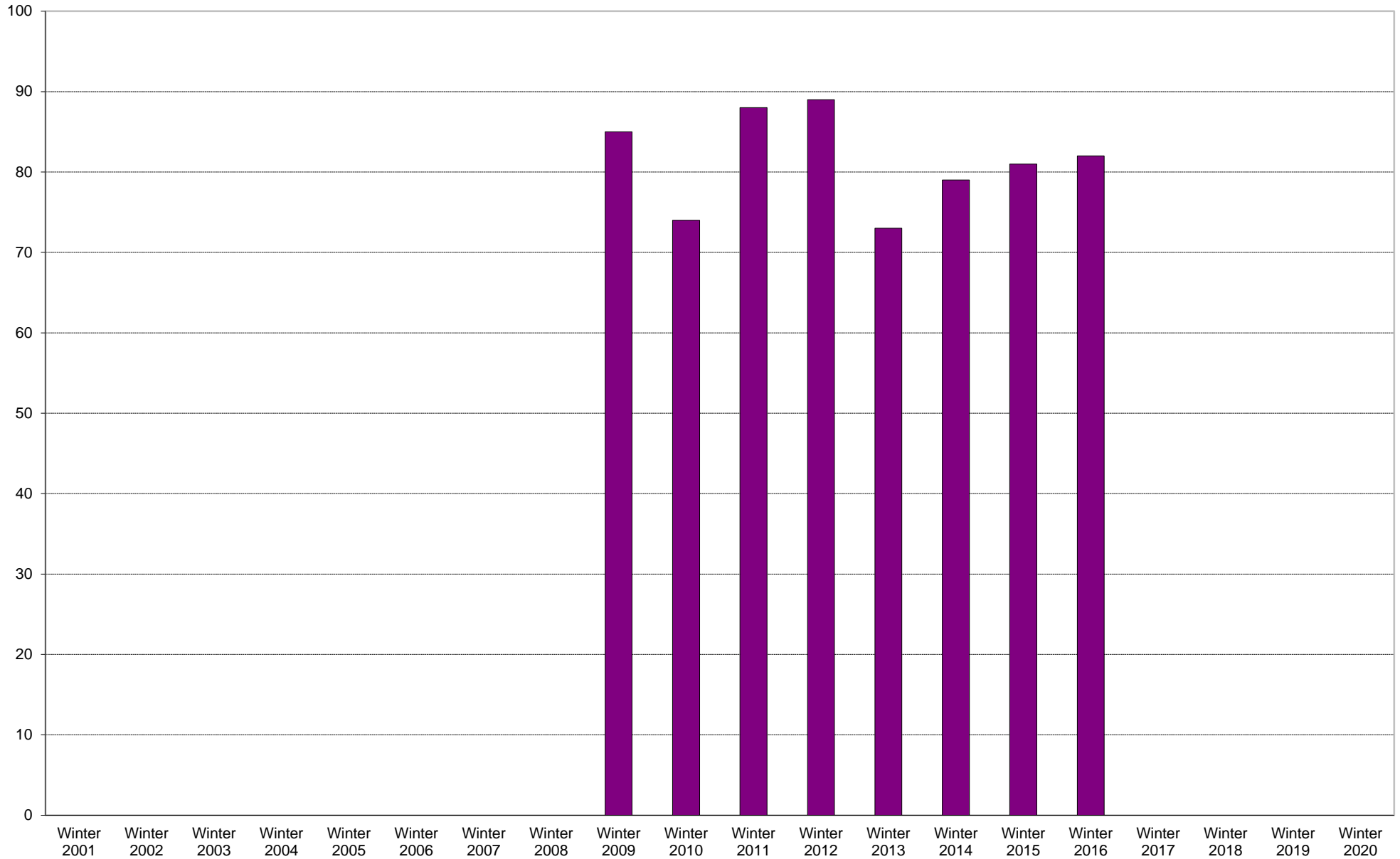
University of California, San Diego Survey of Pedestrian and Vehicular Traffic
Commuters Exiting on Typical Weekday
At Campus Point Drive: By Carpool: Volumes



University of California, San Diego Survey of Pedestrian and Vehicular Traffic
Commuters Exiting on Typical Weekday
At Campus Point Drive: By Shuttle: Percentage of Total Commuters

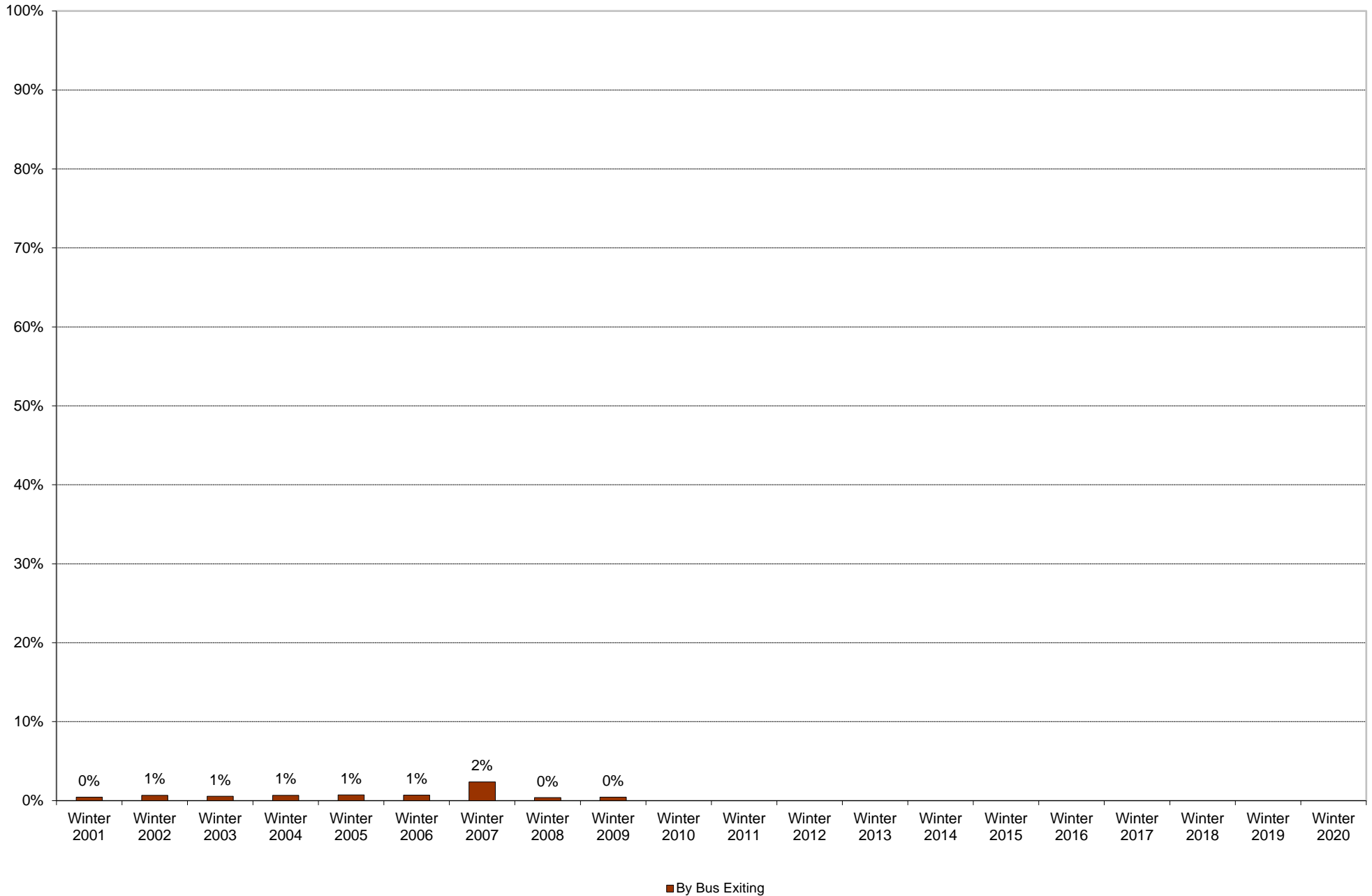


University of California, San Diego Survey of Pedestrian and Vehicular Traffic
Commuters Exiting on Typical Weekday
At Campus Point Drive: By Shuttle: Volumes

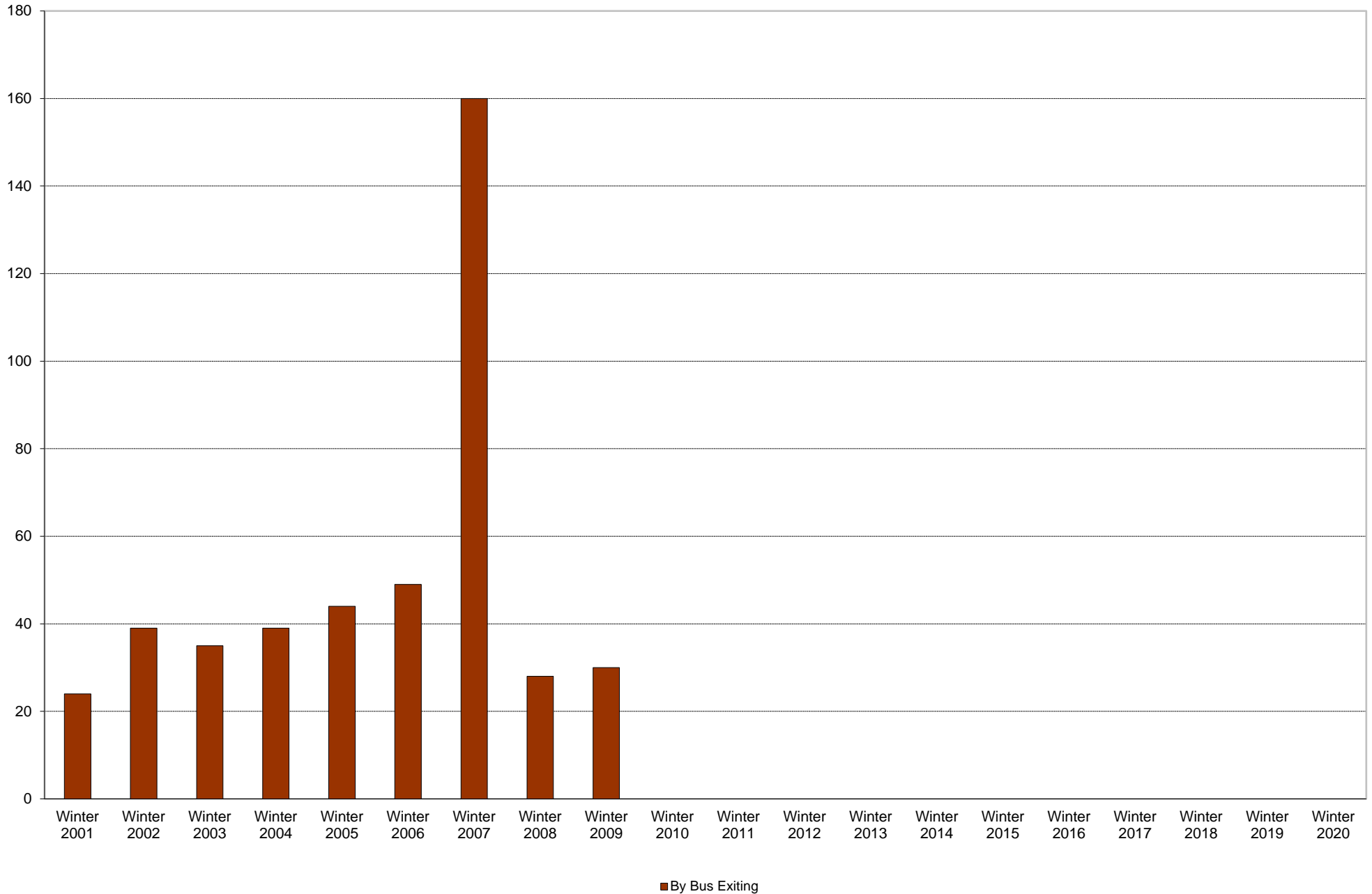


■ By Shuttle Exiting

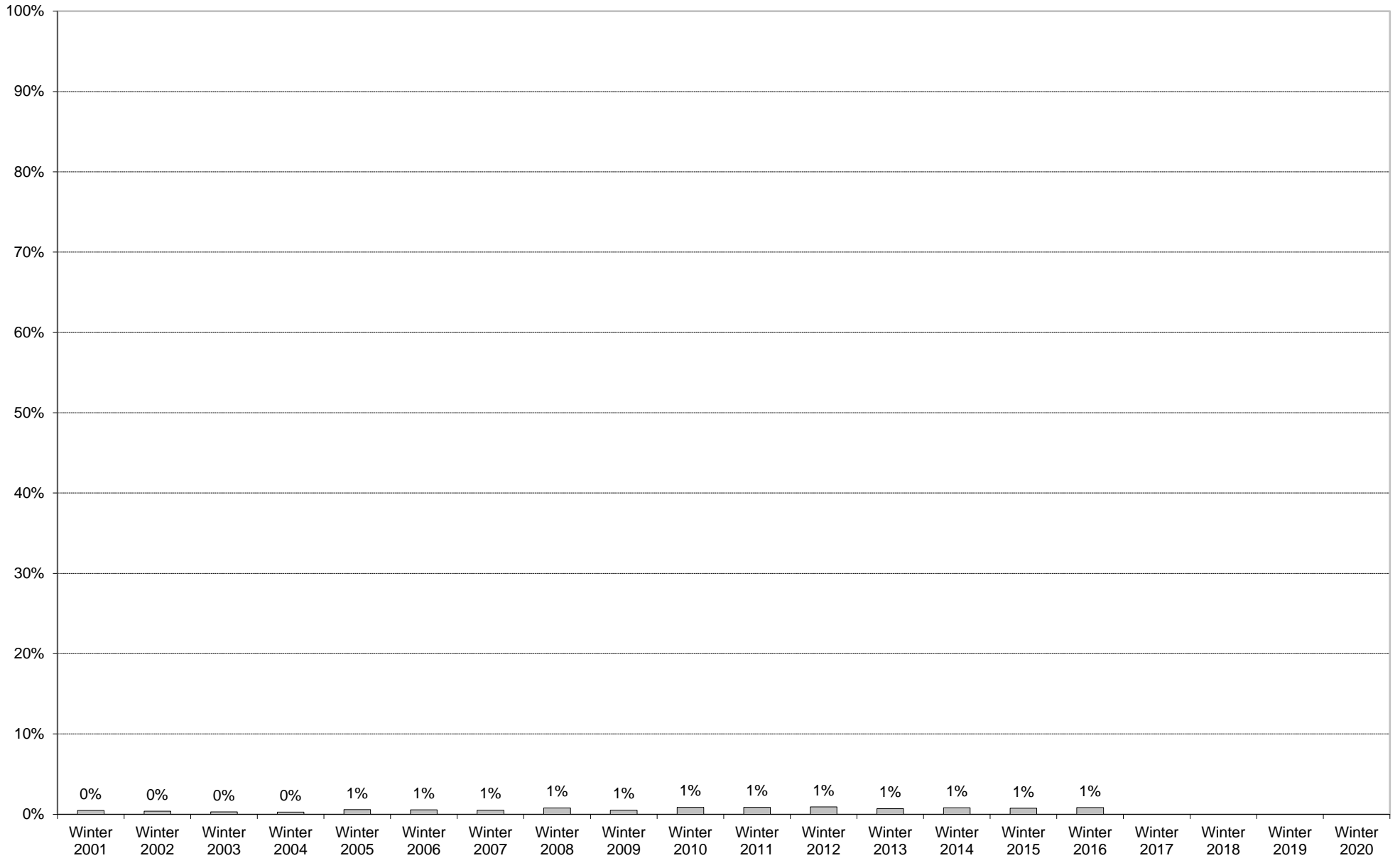
University of California, San Diego Survey of Pedestrian and Vehicular Traffic
Commuters Exiting on Typical Weekday
At Campus Point Drive: By Bus: Percentage of Total Commuters



University of California, San Diego Survey of Pedestrian and Vehicular Traffic
Commuters Exiting on Typical Weekday
At Campus Point Drive: By Bus: Volumes

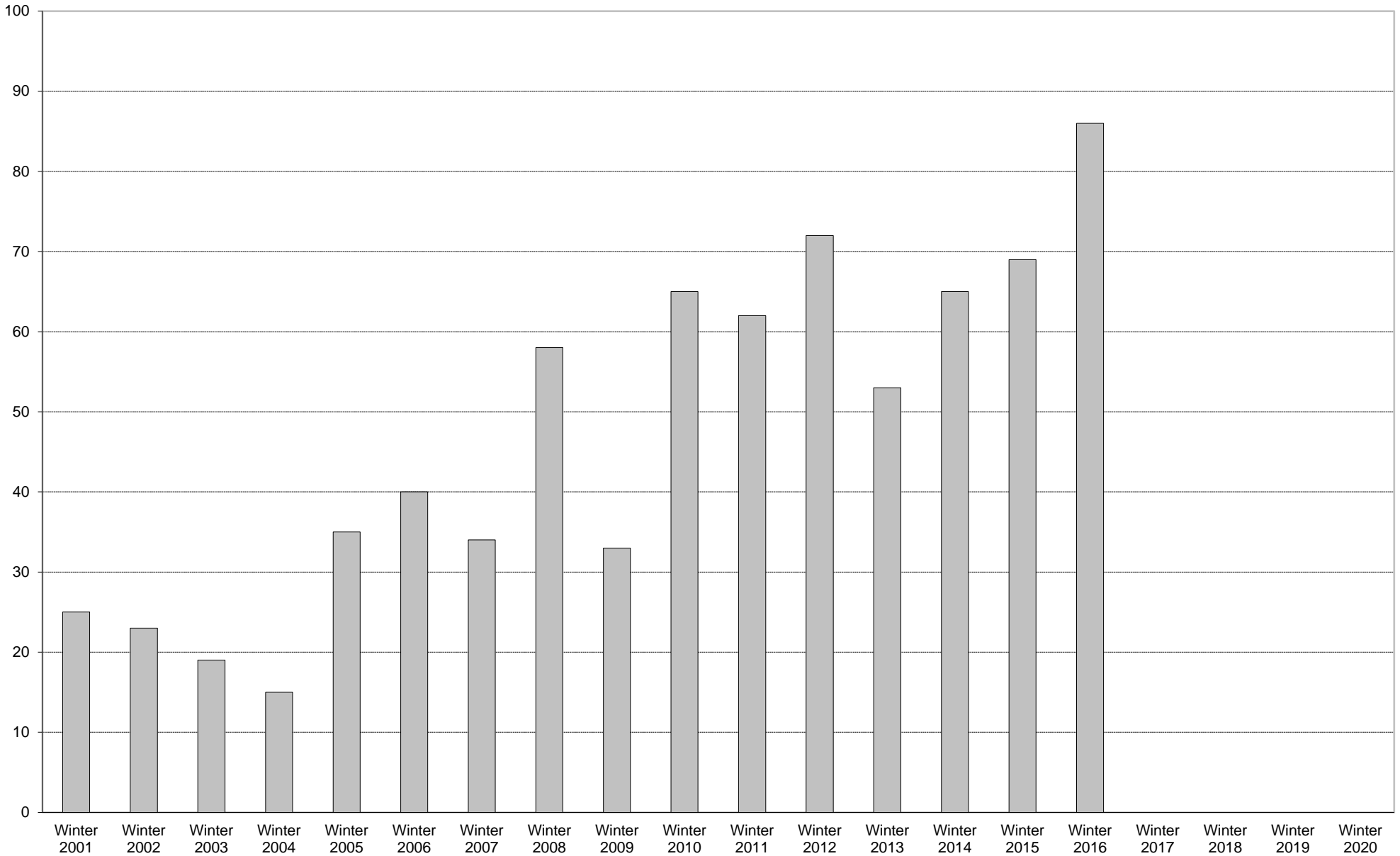


University of California, San Diego Survey of Pedestrian and Vehicular Traffic
Commuters Exiting on Typical Weekday
At Campus Point Drive: By Other: Percentage of Total Commuters



■ By Other Exiting

University of California, San Diego Survey of Pedestrian and Vehicular Traffic
Commuters Exiting on Typical Weekday
At Campus Point Drive: By Other: Volumes



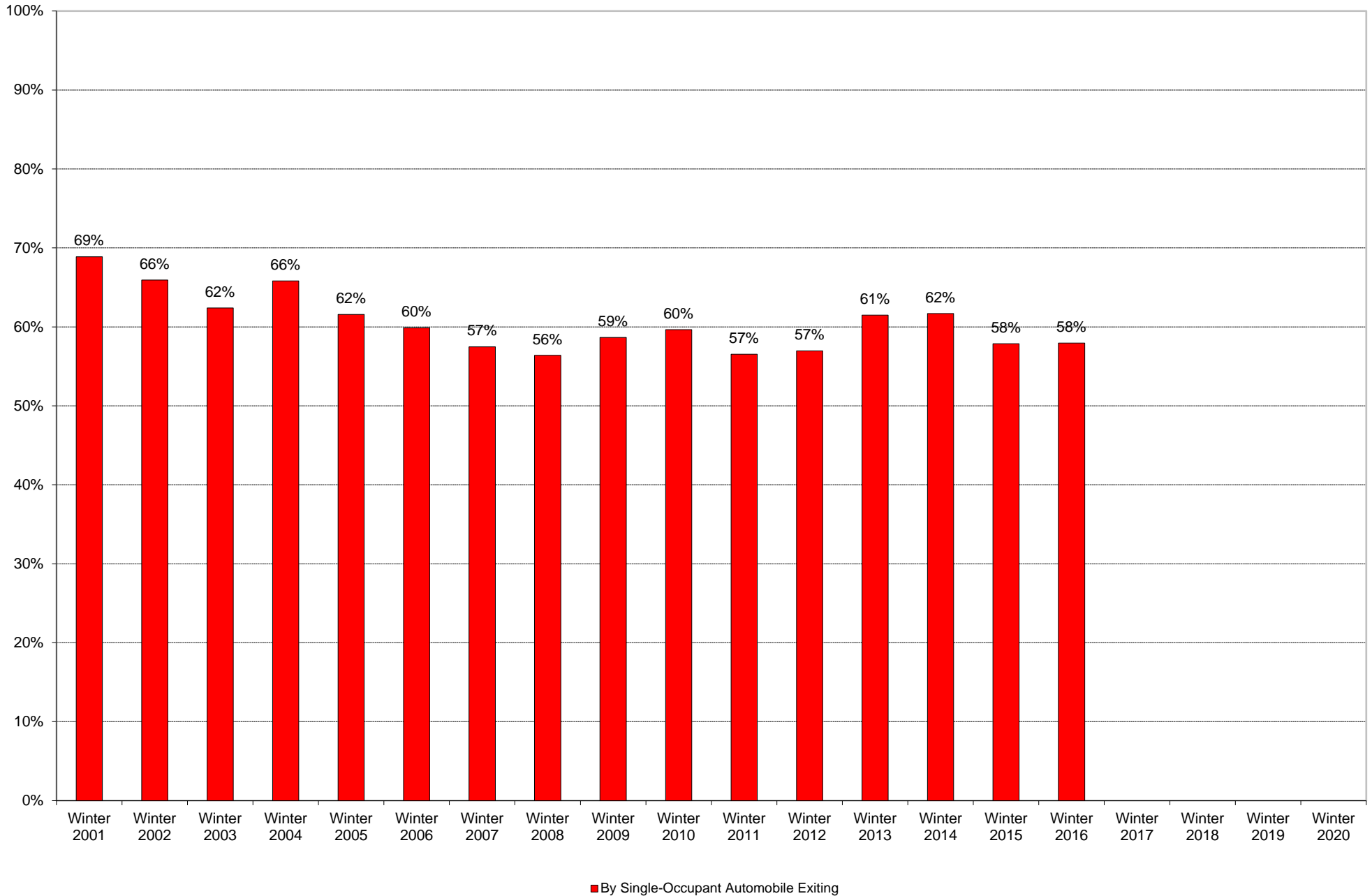
By Other Exiting

University of California, San Diego Survey of Pedestrian and Vehicular Traffic
 Commuters Exiting on Typical Weekday
 At Campus Point Drive: By Other

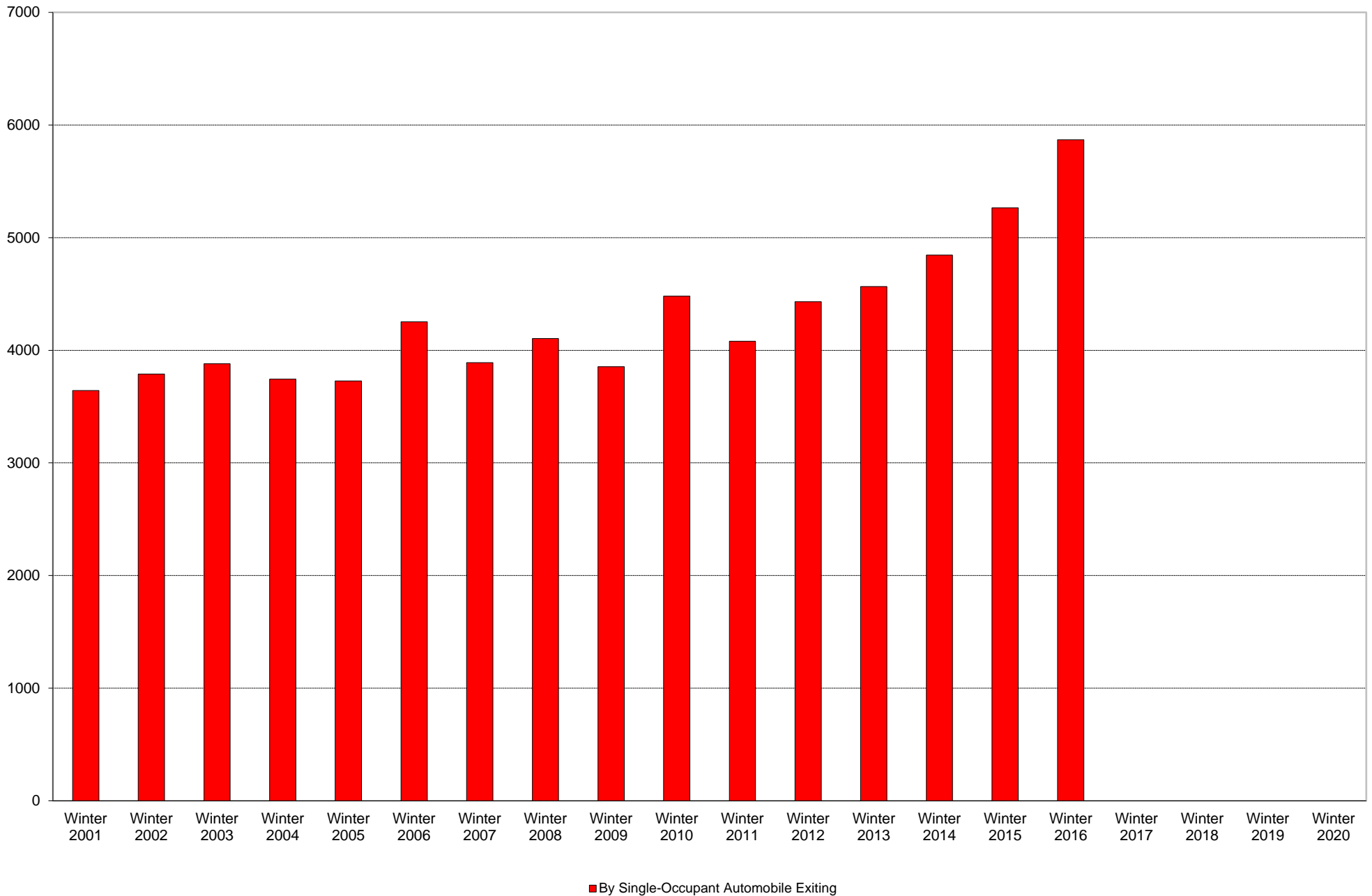
	6am to 7am	7am to 8am	8am to 9am	9am to 10am	10am to 11am	11am to 12pm	12pm to 1pm	1pm to 2pm	2pm to 3pm	3pm to 4pm	4pm to 5pm	5pm to 6pm	6pm to 7pm	7pm to 8pm	8pm to 9pm	9pm to 10pm	Total	Percentage of Total Commuters
Winter 2001		1		1			1	2	2		15	1			2		25	0%
Winter 2002						1	3	3	2	1	11		1		1		23	0%
Winter 2003					1			3	2	4	2	4	1	1		1	19	0%
Winter 2004					1		1	1	1	1	5		3	2			15	0%
Winter 2005				2	4		1	1	8	1	9	2	6	1			35	1%
Winter 2006		1	1			2	3		3	1	18	3	1	3	2	2	40	1%
Winter 2007			1		1		2	1	3	1	17	1	2	1	3	1	34	1%
Winter 2008				2		2		3	2	2	30	3	5	2	3	4	58	1%
Winter 2009					1		1	4		4	16		6		1		33	1%
Winter 2010				2		2	3	3	2	11	21	6	6	3	5	1	65	1%
Winter 2011			1		2	4	1	1	5	9	29	3	5	1		1	62	1%
Winter 2012	2			4		4		5	6	12	27	5	2	3		2	72	1%
Winter 2013				1	1	2	1	1	2	12	23	5	2	1	1	1	53	1%
Winter 2014			1	2	3	1	1	2	2	14	26	1	5	2	2	3	65	1%
Winter 2015				1	2	2	4	2	4	11	34	2	2	3	1	1	69	1%
Winter 2016			1	2	1	3	13	4	7	10	20	10	5	3	1	6	86	1%
Winter 2017																		
Winter 2018																		
Winter 2019																		
Winter 2020																		

Includes motorcycle and vanpool.

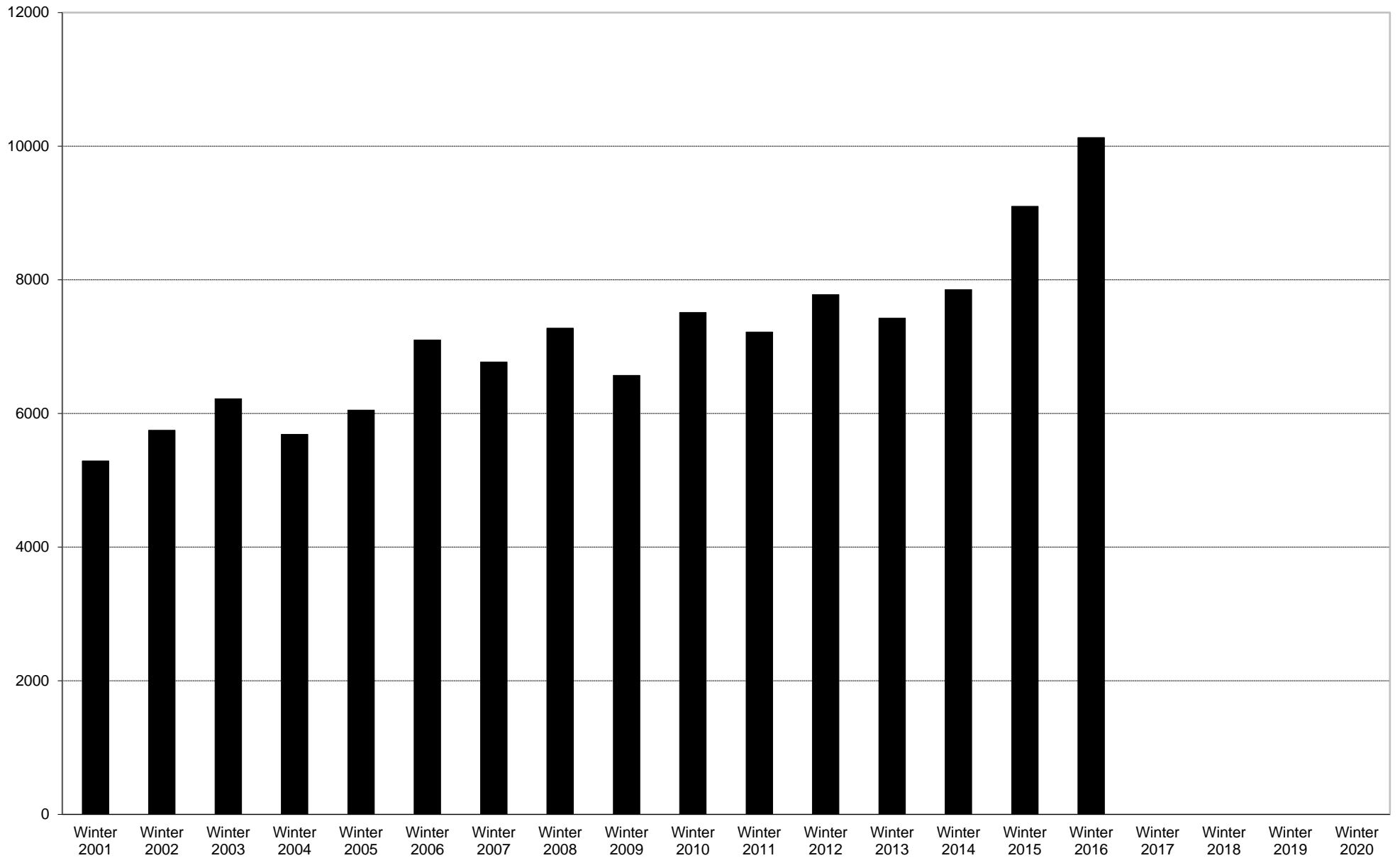
University of California, San Diego Survey of Pedestrian and Vehicular Traffic
Commuters Exiting on Typical Weekday
At Campus Point Drive: By Single-Occupant Automobile: Percentage of Total Commuters



University of California, San Diego Survey of Pedestrian and Vehicular Traffic
Commuters Exiting on Typical Weekday
At Campus Point Drive: By Single-Occupant Automobile: Volumes



University of California, San Diego Survey of Pedestrian and Vehicular Traffic
Commuters Exiting on Typical Weekday
At Campus Point Drive: Total Commuters: Volumes



■ Total Commuters Exiting

