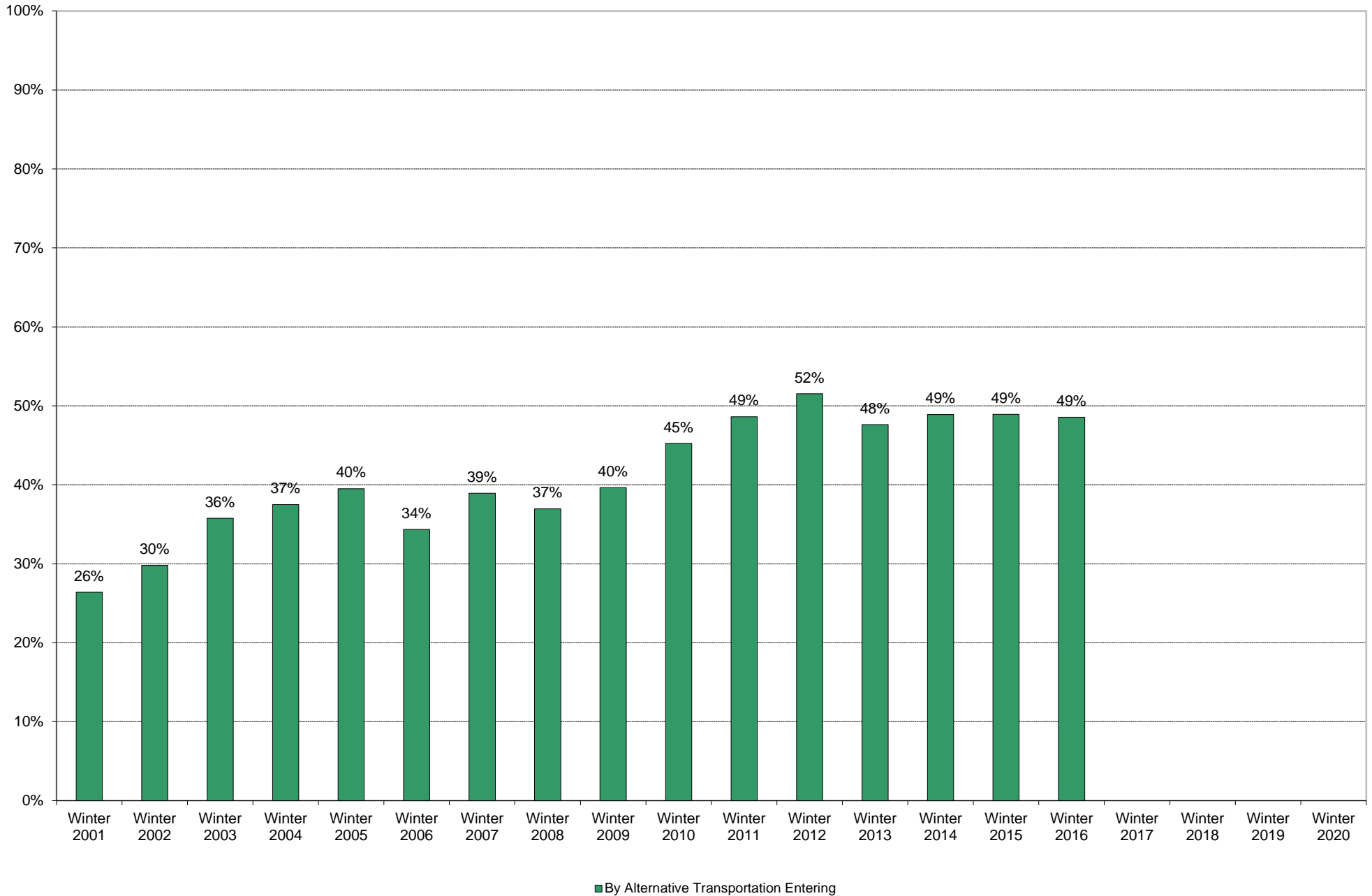
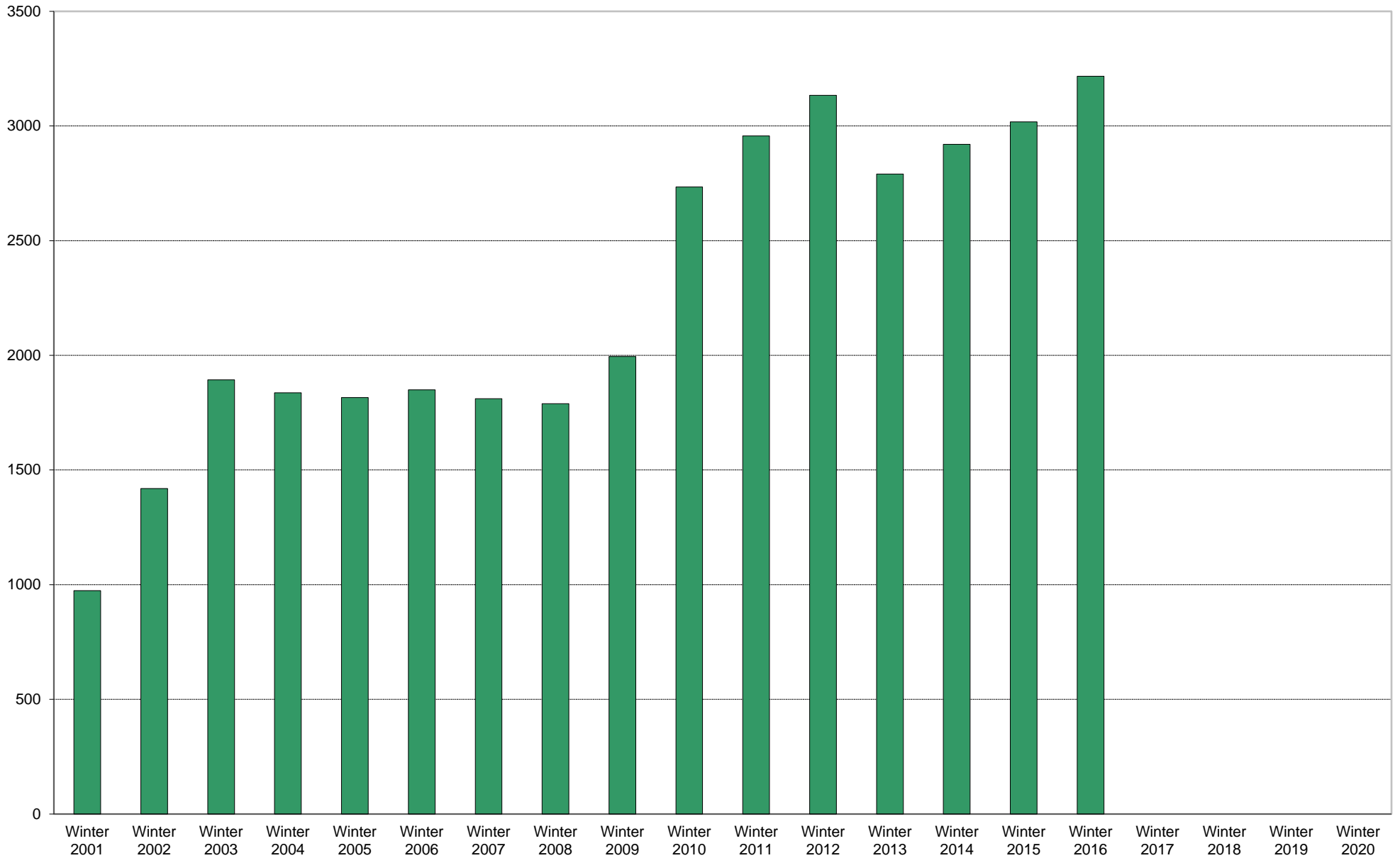


University of California, San Diego Survey of Pedestrian and Vehicular Traffic
Commuters Entering on Typical Weekday
At Health Sciences Drive: By Alternative Transportation: Percentage of Total Commuters

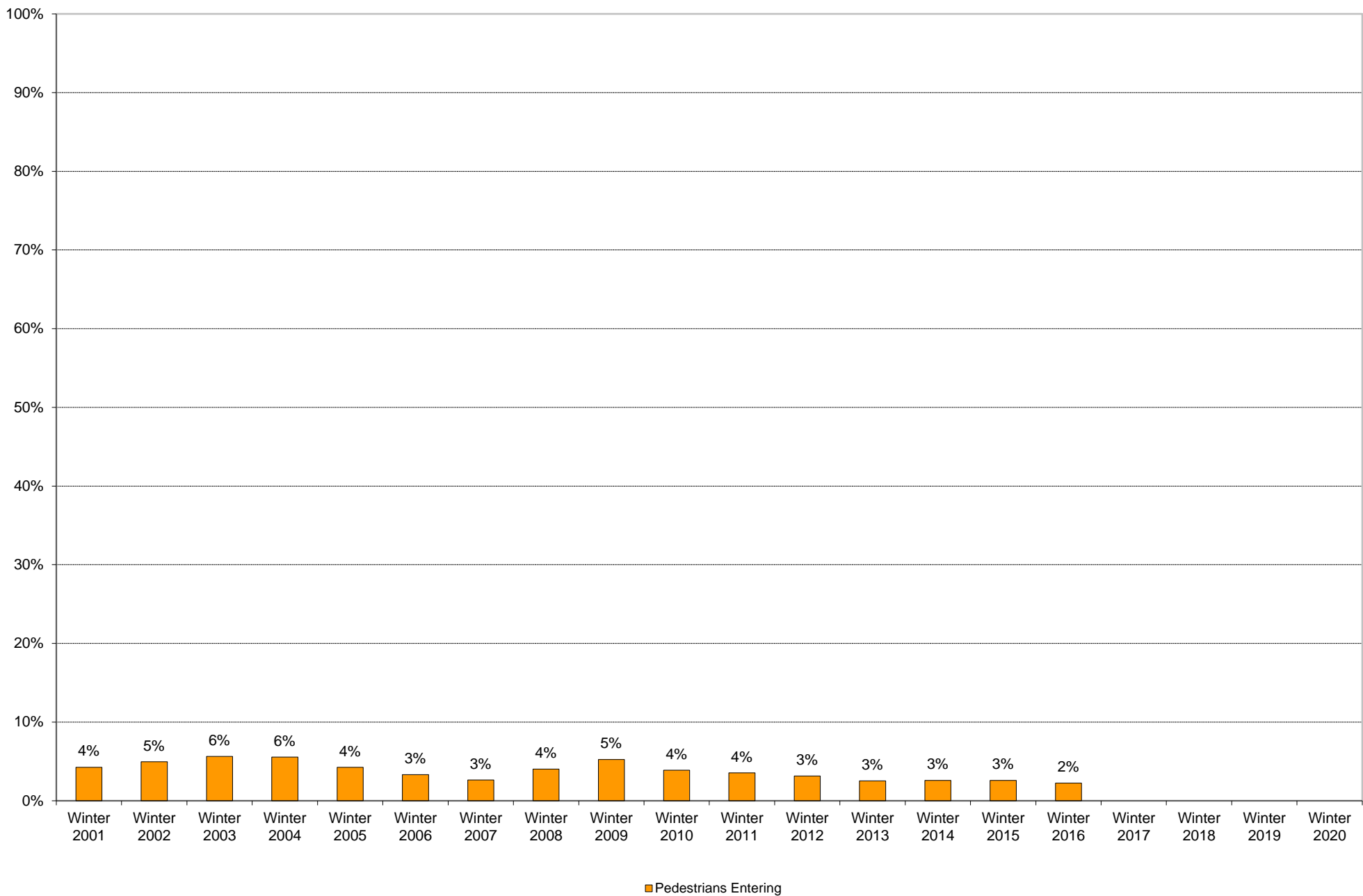


University of California, San Diego Survey of Pedestrian and Vehicular Traffic
Commuters Entering on Typical Weekday
At Health Sciences Drive: By Alternative Transportation: Volumes

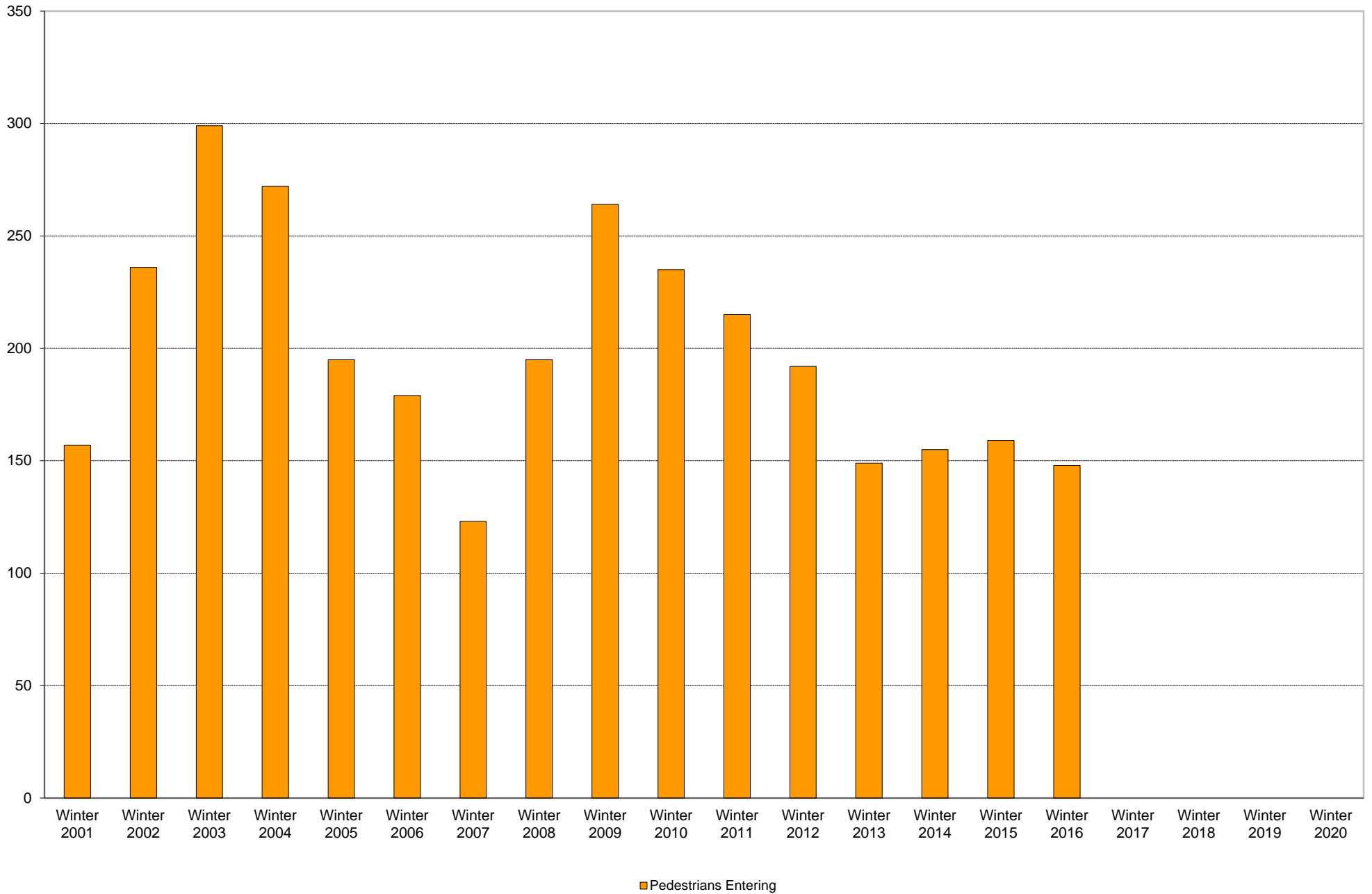


■ By Alternative Transportation Entering

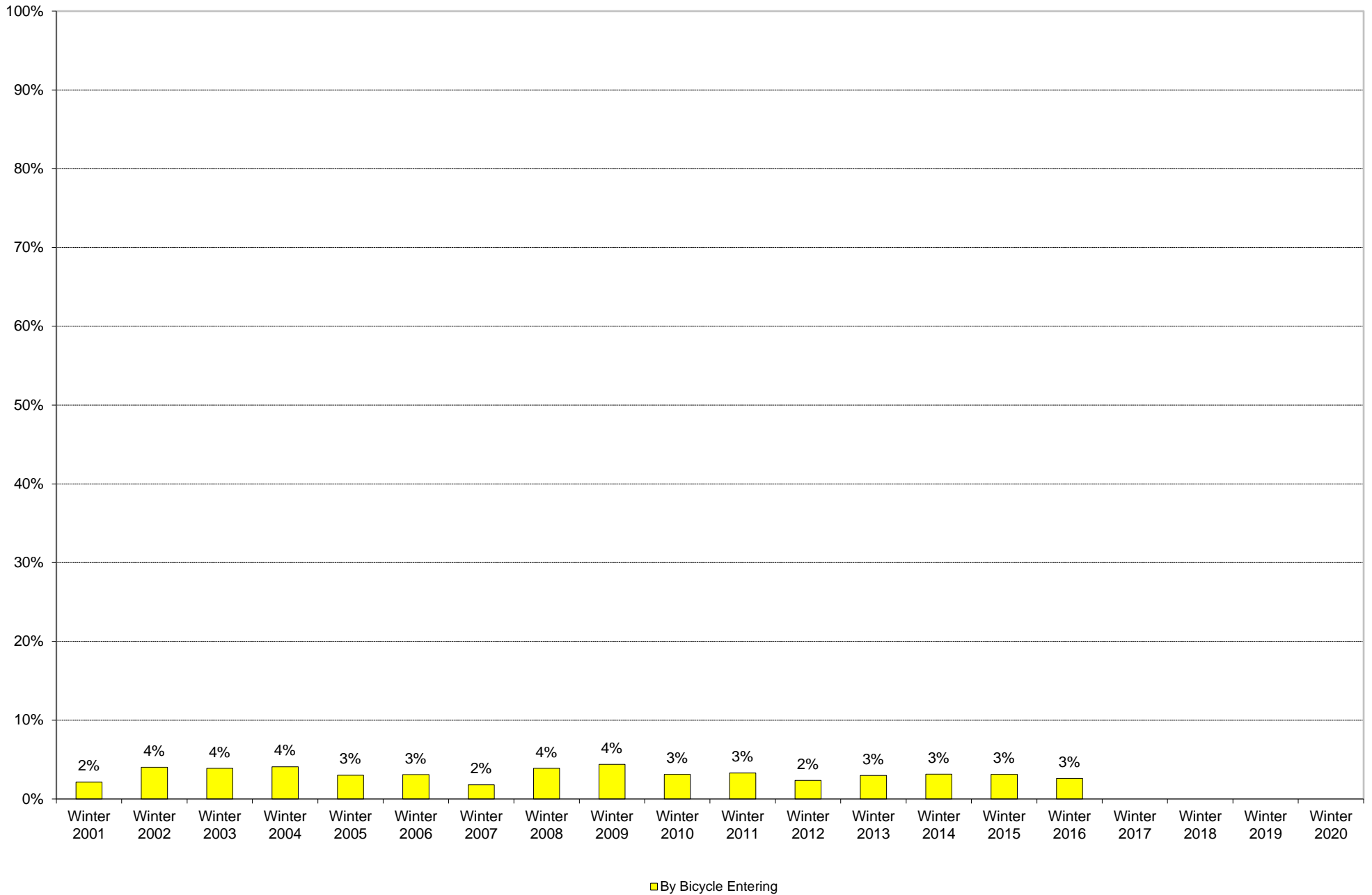
University of California, San Diego Survey of Pedestrian and Vehicular Traffic
Commuters Entering on Typical Weekday
At Health Sciences Drive: Pedestrians: Percentage of Total Commuters



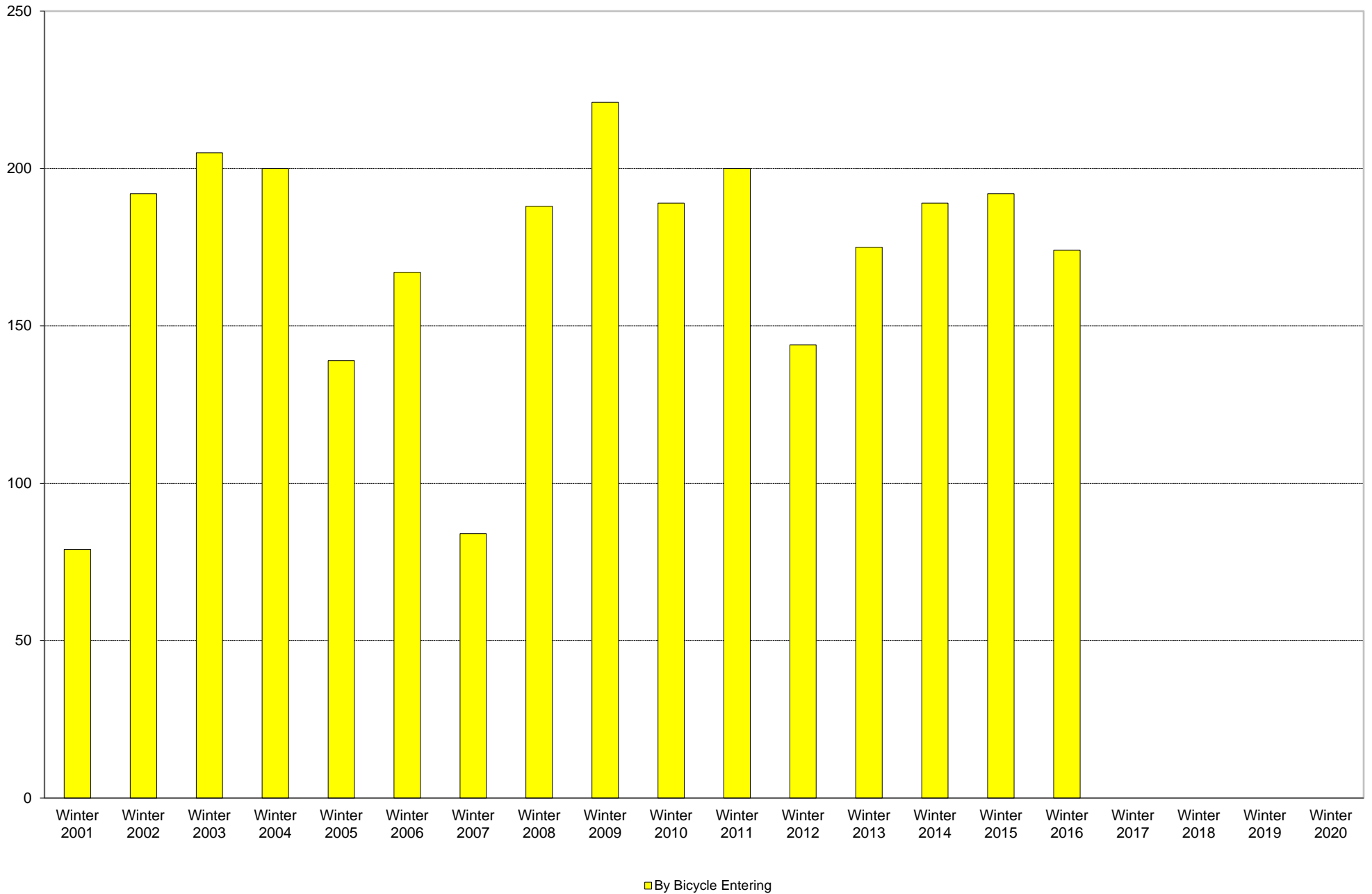
University of California, San Diego Survey of Pedestrian and Vehicular Traffic
Commuters Entering on Typical Weekday
At Health Sciences Drive: Pedestrians: Volumes



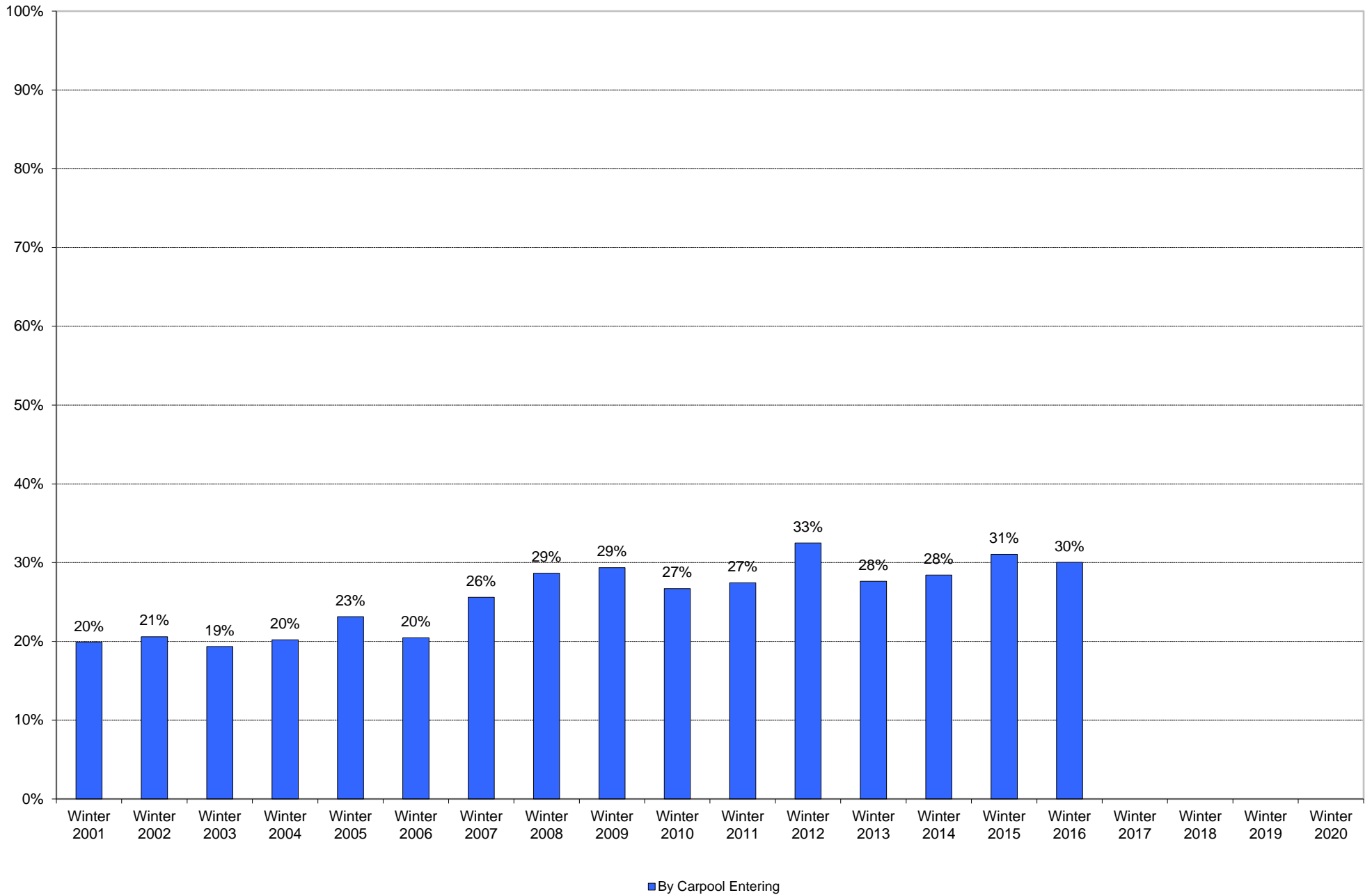
University of California, San Diego Survey of Pedestrian and Vehicular Traffic
Commuters Entering on Typical Weekday
At Health Sciences Drive: By Bicycle: Percentage of Total Commuters



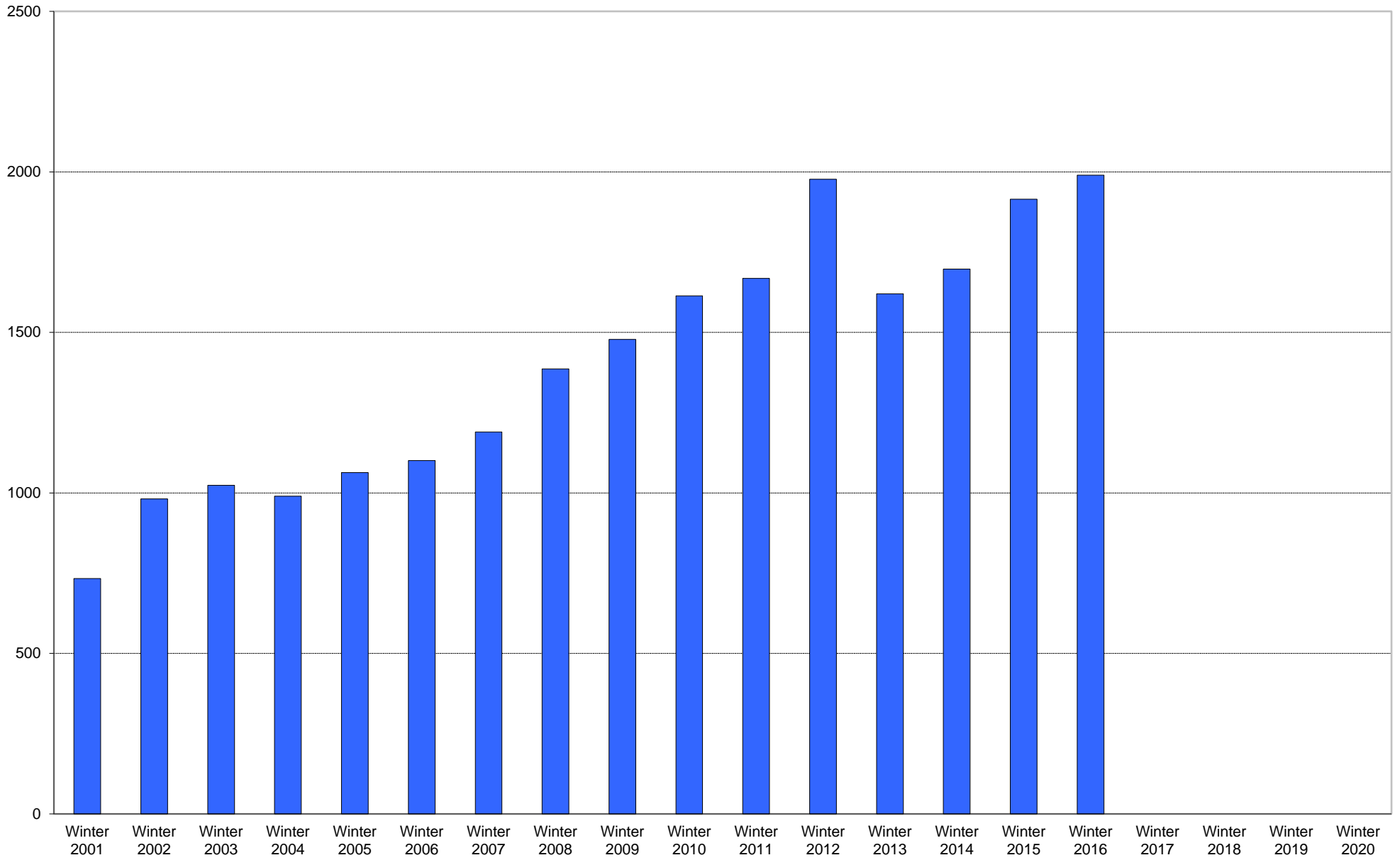
University of California, San Diego Survey of Pedestrian and Vehicular Traffic
Commuters Entering on Typical Weekday
At Health Sciences Drive: By Bicycle: Volumes



University of California, San Diego Survey of Pedestrian and Vehicular Traffic
Commuters Entering on Typical Weekday
At Health Sciences Drive: By Carpool: Percentage of Total Commuters

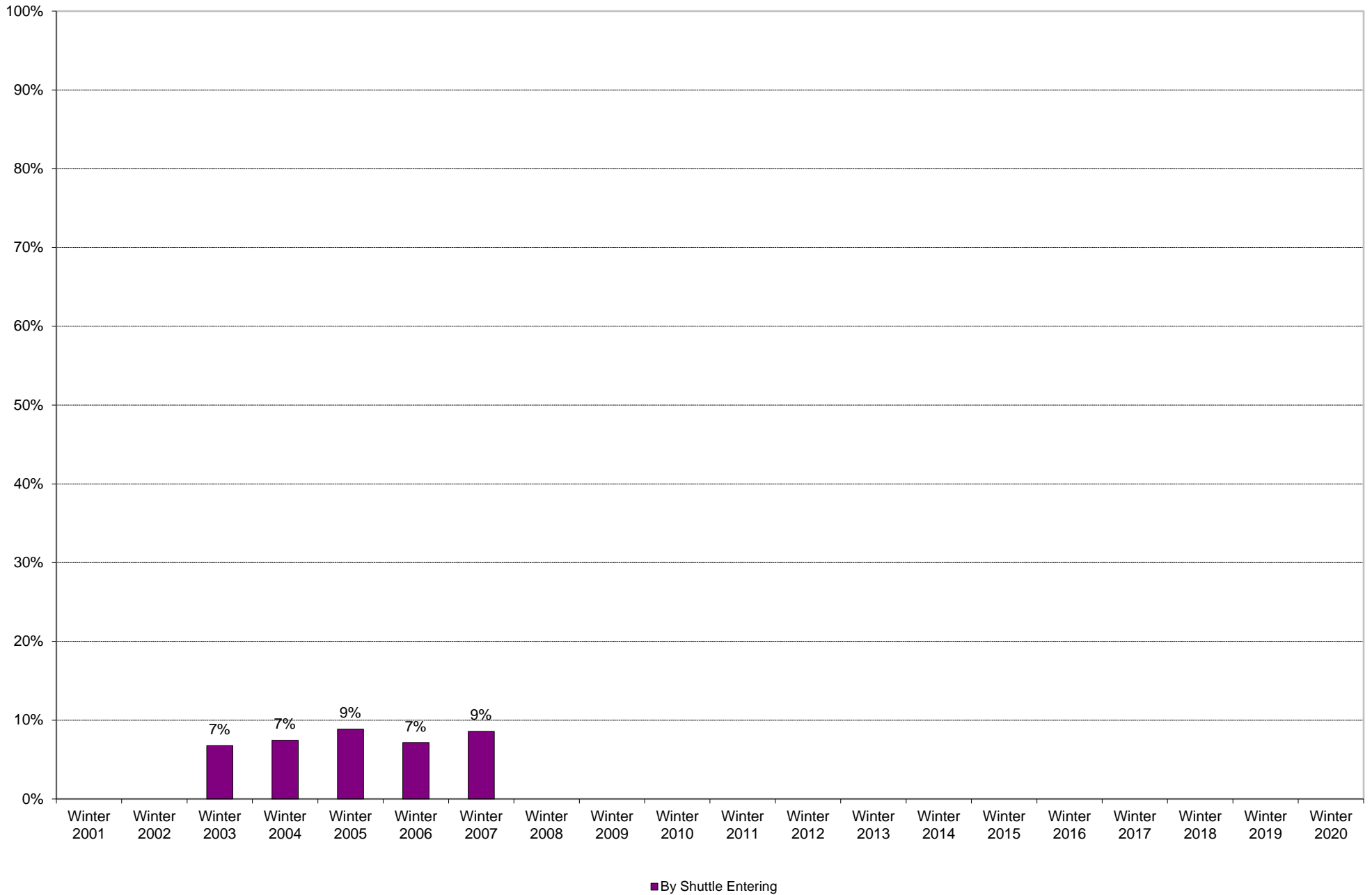


University of California, San Diego Survey of Pedestrian and Vehicular Traffic
Commuters Entering on Typical Weekday
At Health Sciences Drive: By Carpool: Volumes

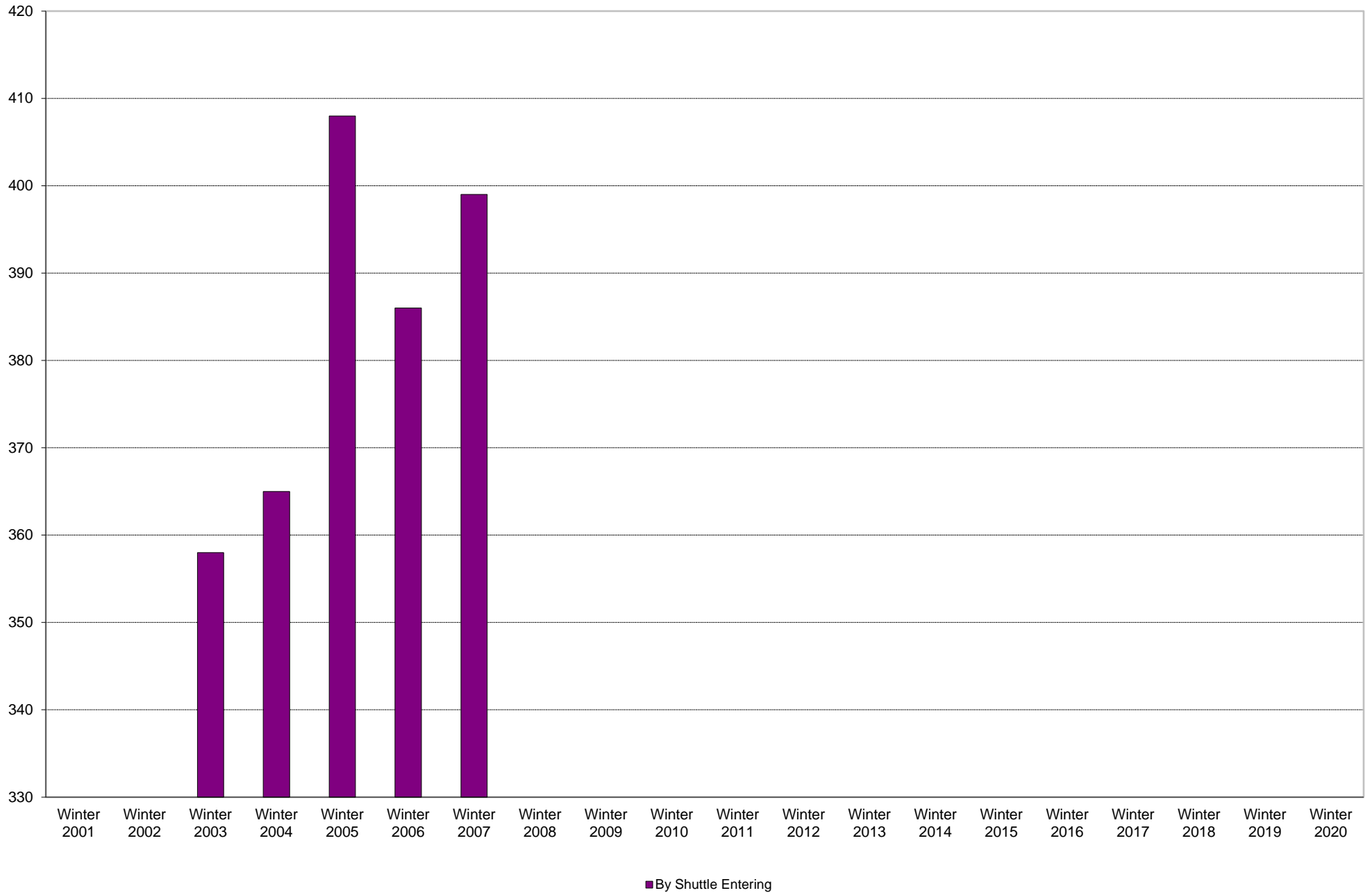


■ By Carpool Entering

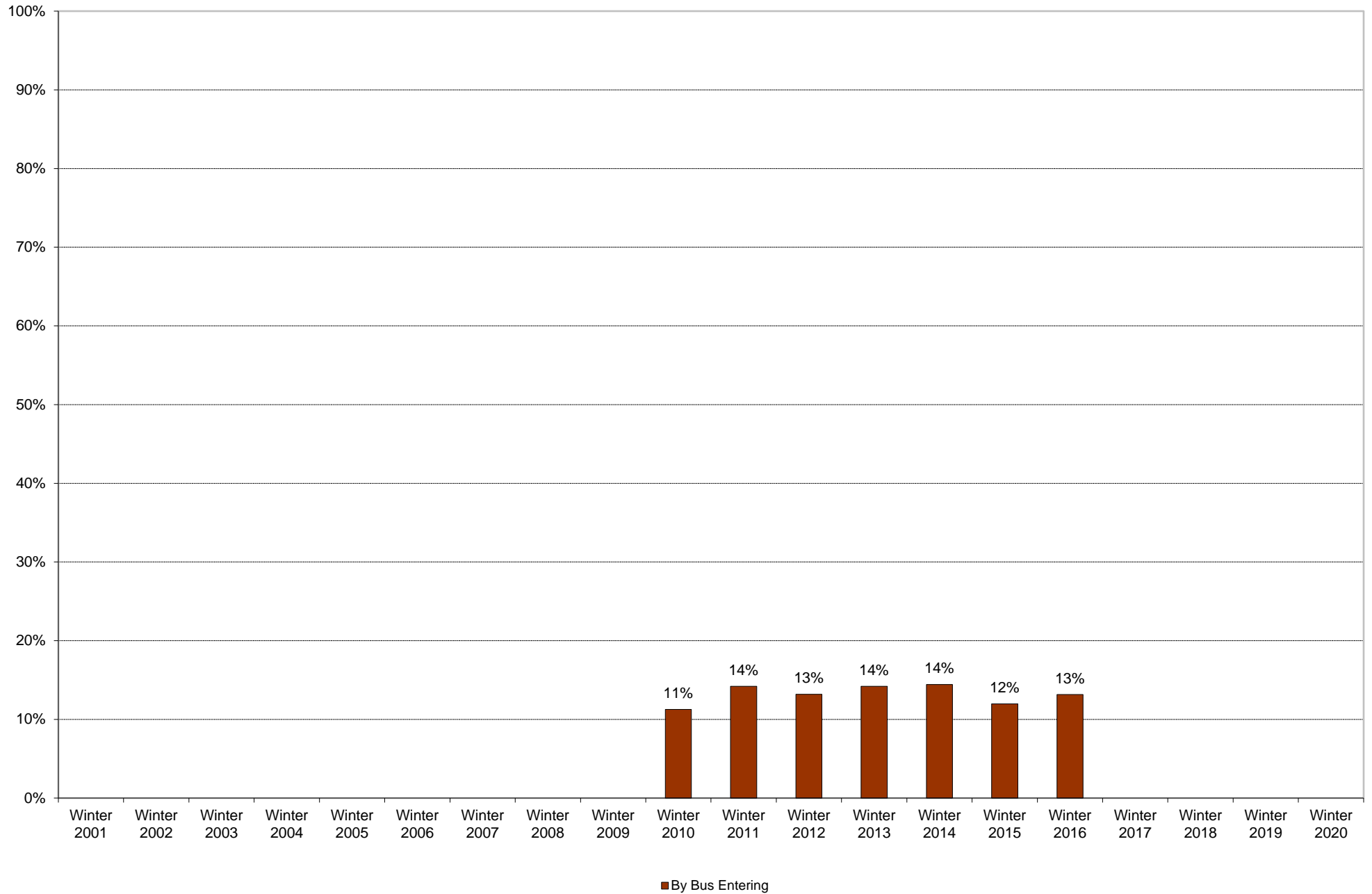
University of California, San Diego Survey of Pedestrian and Vehicular Traffic
Commuters Entering on Typical Weekday
At Health Sciences Drive: By Shuttle: Percentage of Total Commuters



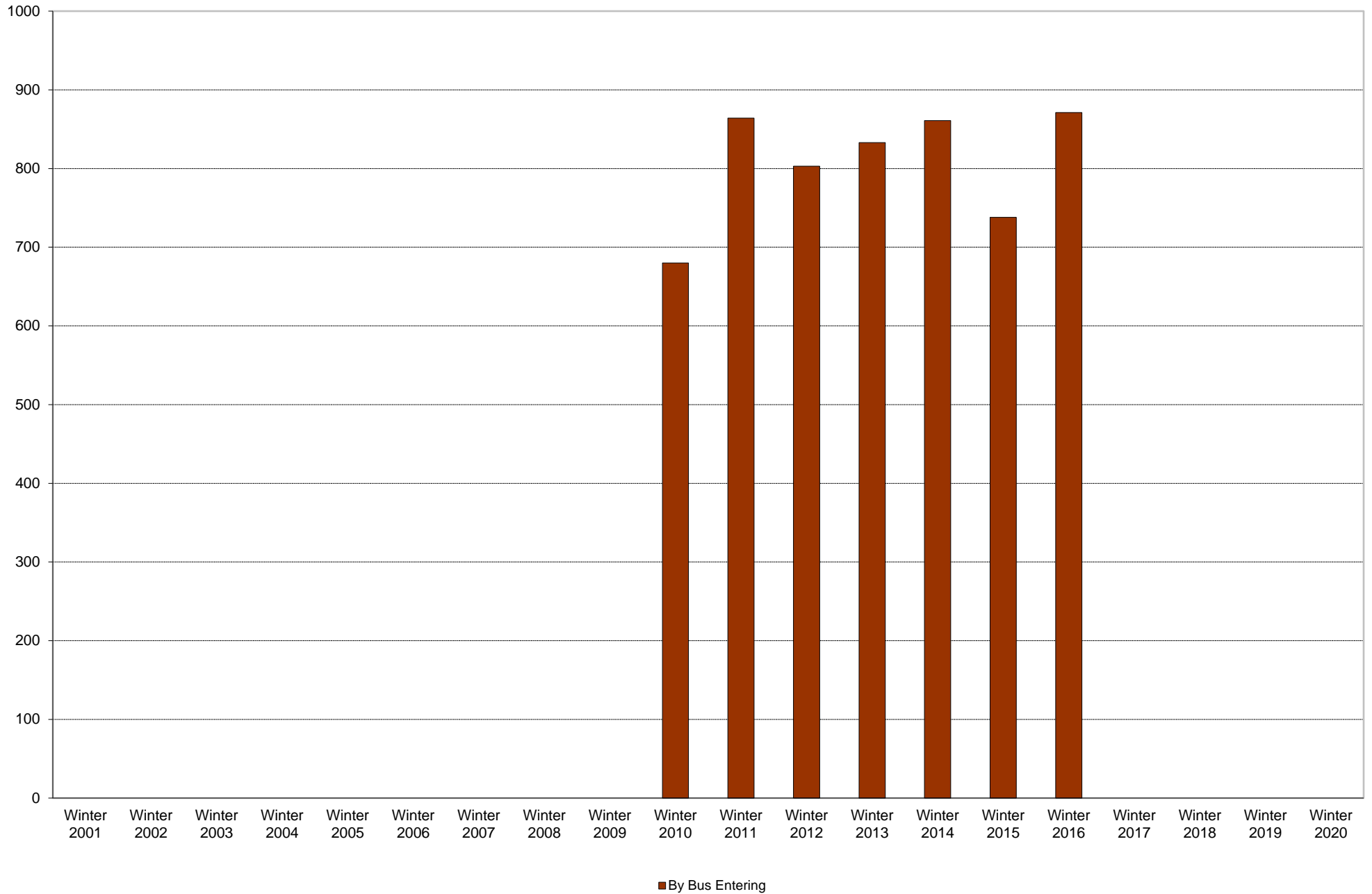
University of California, San Diego Survey of Pedestrian and Vehicular Traffic
Commuters Entering on Typical Weekday
At Health Sciences Drive: By Shuttle: Volumes



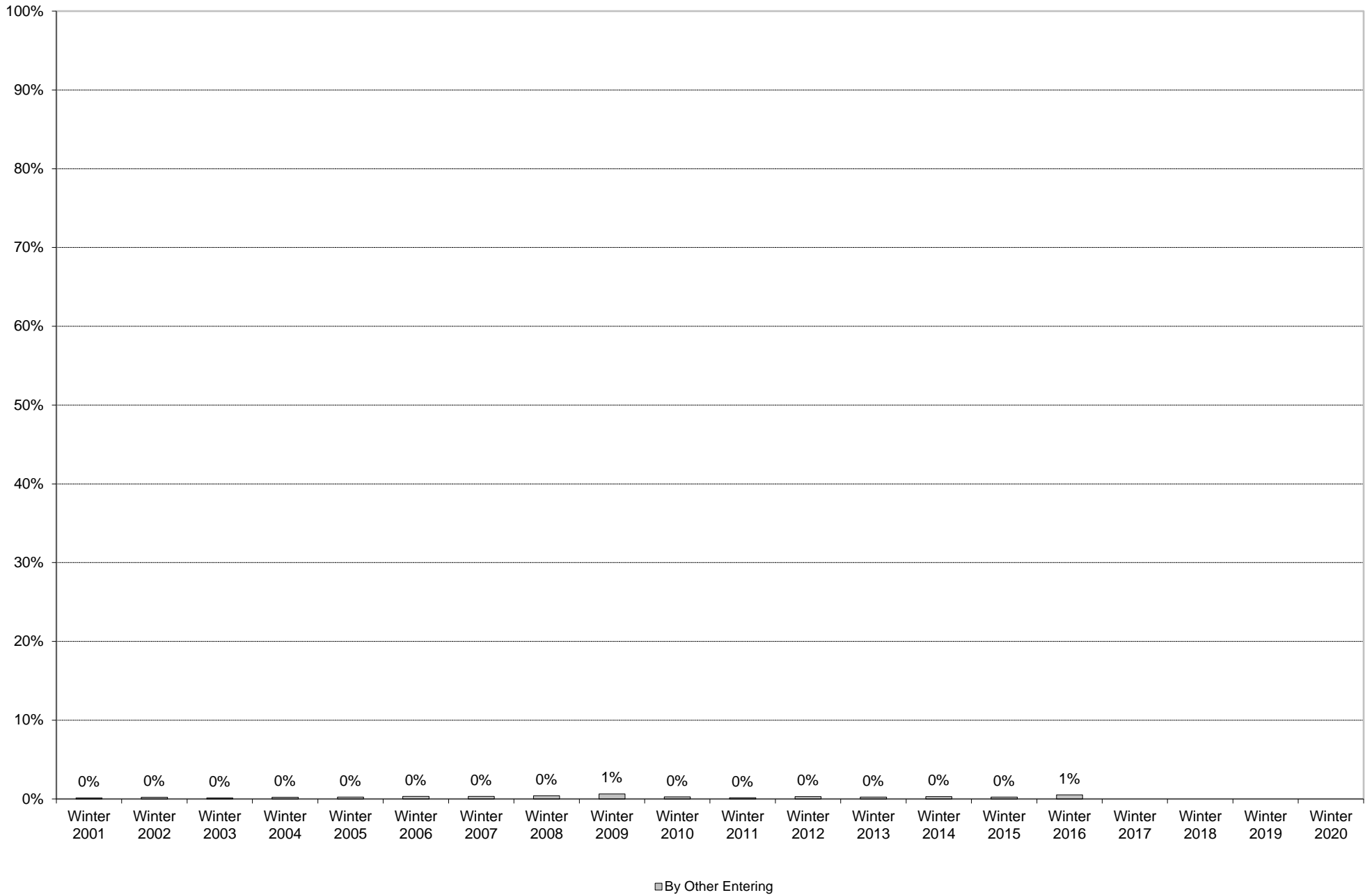
University of California, San Diego Survey of Pedestrian and Vehicular Traffic
Commuters Entering on Typical Weekday
At Health Sciences Drive: By Bus: Percentage of Total Commuters



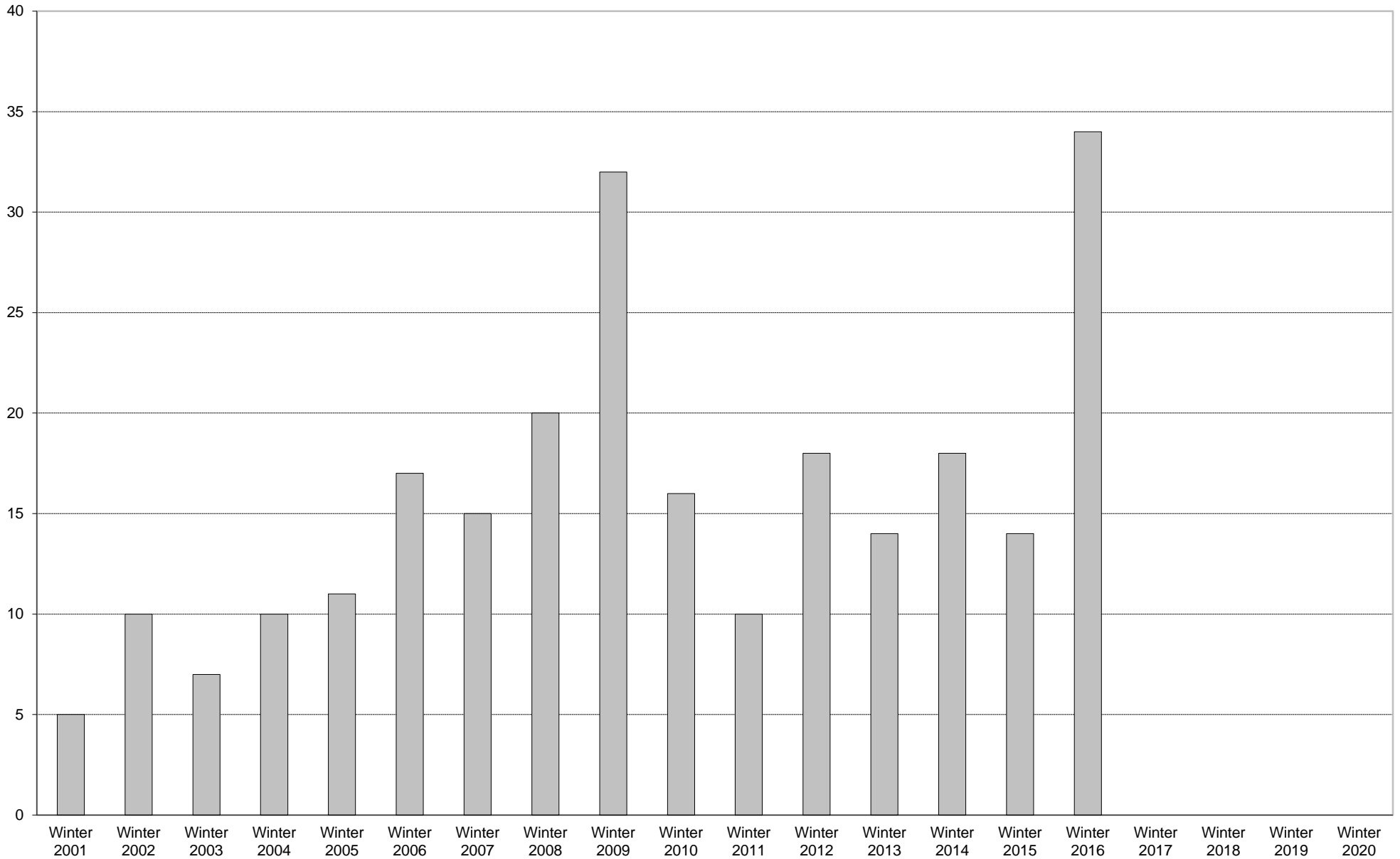
University of California, San Diego Survey of Pedestrian and Vehicular Traffic
Commuters Entering on Typical Weekday
At Health Sciences Drive: By Bus: Volumes



University of California, San Diego Survey of Pedestrian and Vehicular Traffic
Commuters Entering on Typical Weekday
At Health Sciences Drive: By Other: Percentage of Total Commuters



University of California, San Diego Survey of Pedestrian and Vehicular Traffic
Commuters Entering on Typical Weekday
At Health Sciences Drive: By Other: Volumes



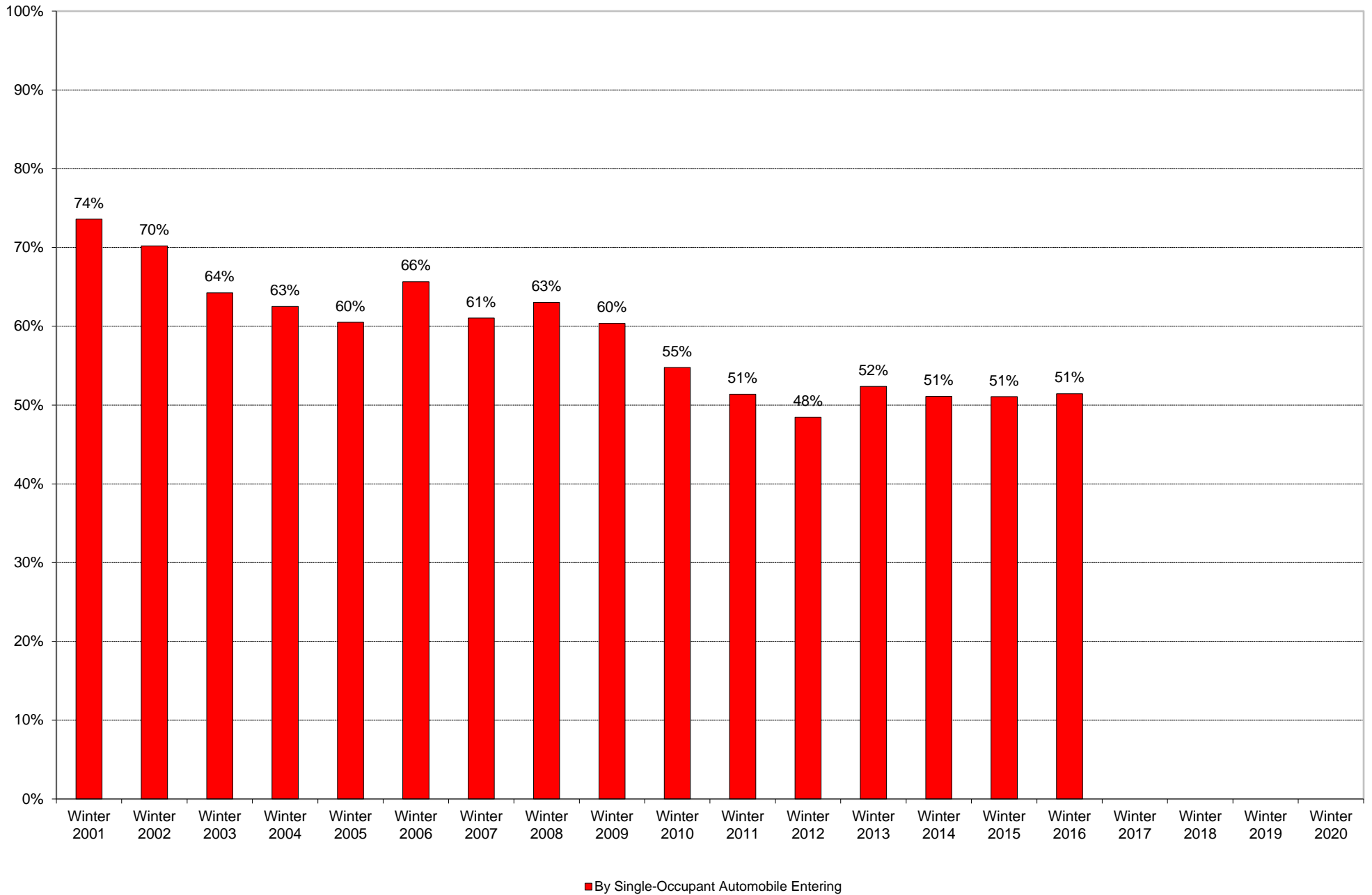
By Other Entering

University of California, San Diego Survey of Pedestrian and Vehicular Traffic
 Commuters Entering on Typical Weekday
 At Health Sciences Drive: By Other

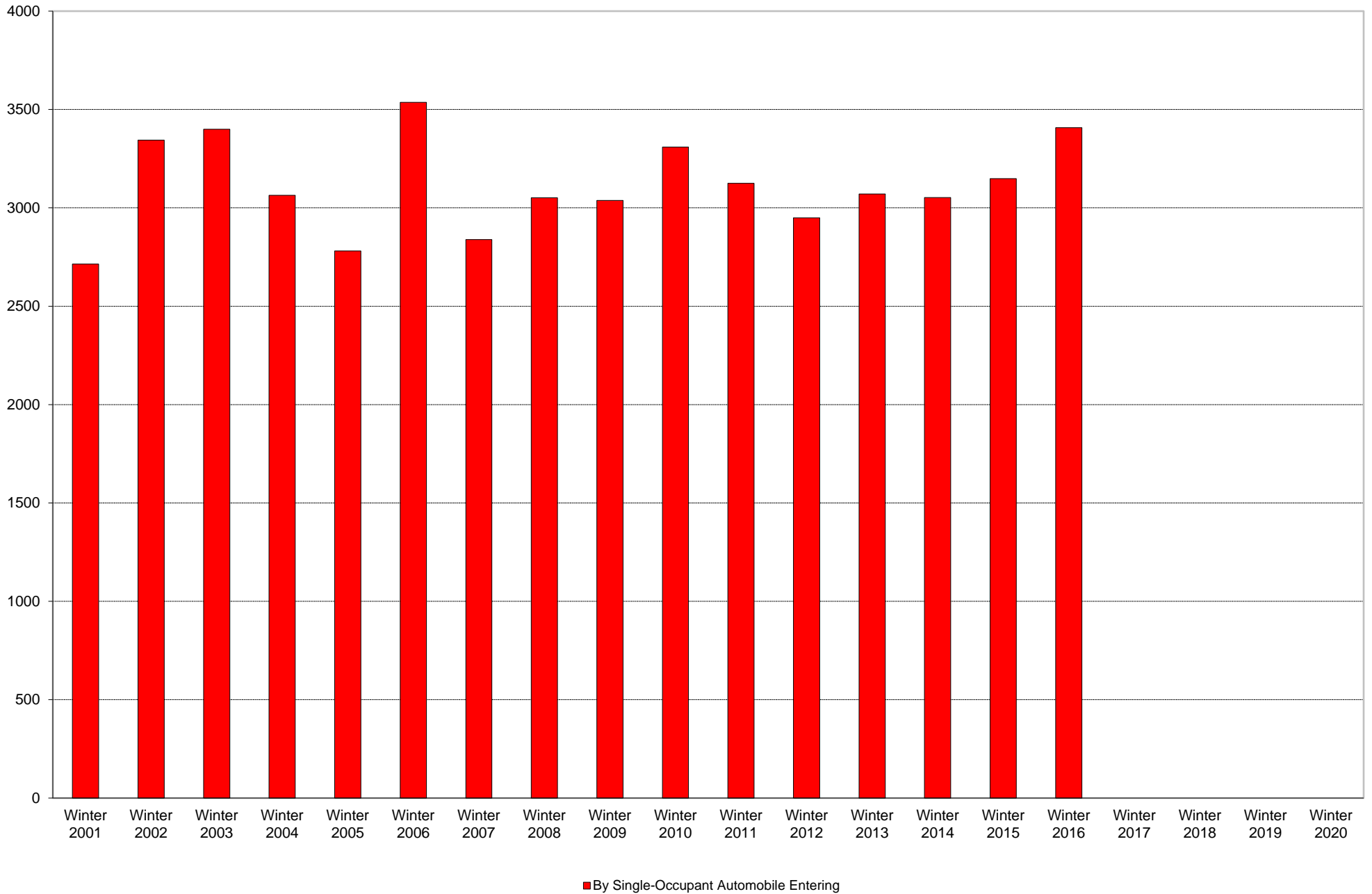
| | 6am to 7am | 7am to 8am | 8am to 9am | 9am to 10am | 10am to 11am | 11am to 12pm | 12pm to 1pm | 1pm to 2pm | 2pm to 3pm | 3pm to 4pm | 4pm to 5pm | 5pm to 6pm | 6pm to 7pm | 7pm to 8pm | 8pm to 9pm | 9pm to 10pm | Total | Percentage of Total Commuters |
|-------------|------------------|------------------|------------------|-------------------|--------------------|--------------------|-------------------|------------------|------------------|------------------|------------------|------------------|------------------|------------------|------------------|-------------------|-------|----------------------------------------|
| Winter 2001 | | 2 | 2 | | 1 | | | | | | | | | | | | 5 | 0% |
| Winter 2002 | | 1 | 1 | 2 | 2 | | 3 | 1 | | | | | | | | | 10 | 0% |
| Winter 2003 | 1 | 2 | | 2 | | | | 1 | | 1 | | | | | | | 7 | 0% |
| Winter 2004 | | 3 | 1 | | 4 | | | 1 | | | | | | | | 1 | 10 | 0% |
| Winter 2005 | | 3 | 1 | | | 2 | 1 | 1 | 1 | | | | | 1 | 1 | | 11 | 0% |
| Winter 2006 | 1 | 1 | 2 | 4 | | 2 | | 2 | 1 | 1 | 1 | | 1 | 1 | | | 17 | 0% |
| Winter 2007 | | 1 | 2 | 4 | 1 | 1 | 2 | 1 | | | 1 | | 1 | 1 | | | 15 | 0% |
| Winter 2008 | 2 | 4 | | 2 | 4 | 3 | 1 | 1 | | 2 | 1 | | | | | | 20 | 0% |
| Winter 2009 | 2 | | 4 | 4 | 3 | 5 | 5 | 1 | | 4 | | 1 | | 1 | 1 | 1 | 32 | 1% |
| Winter 2010 | | 1 | 2 | 7 | 2 | 1 | 1 | | 1 | 1 | | | | | | | 16 | 0% |
| Winter 2011 | | | 2 | 2 | 2 | | 1 | 1 | | 1 | 1 | | | | | | 10 | 0% |
| Winter 2012 | 1 | 2 | 2 | 6 | 1 | | 1 | 3 | 1 | | | 1 | | | | | 18 | 0% |
| Winter 2013 | 1 | | 2 | 2 | 2 | 1 | 1 | 1 | 2 | 1 | | | | 1 | | | 14 | 0% |
| Winter 2014 | 1 | 1 | 1 | 2 | 3 | 2 | | 2 | 4 | | | | | | 1 | 1 | 18 | 0% |
| Winter 2015 | 2 | | 2 | 4 | 3 | 1 | | | 1 | | | | 1 | | | | 14 | 0% |
| Winter 2016 | 3 | 9 | 5 | 2 | 1 | 3 | 2 | 1 | 2 | 3 | | | 1 | 1 | | 1 | 34 | 1% |
| Winter 2017 | | | | | | | | | | | | | | | | | | |
| Winter 2018 | | | | | | | | | | | | | | | | | | |
| Winter 2019 | | | | | | | | | | | | | | | | | | |
| Winter 2020 | | | | | | | | | | | | | | | | | | |

Includes motorcycle and vanpool.

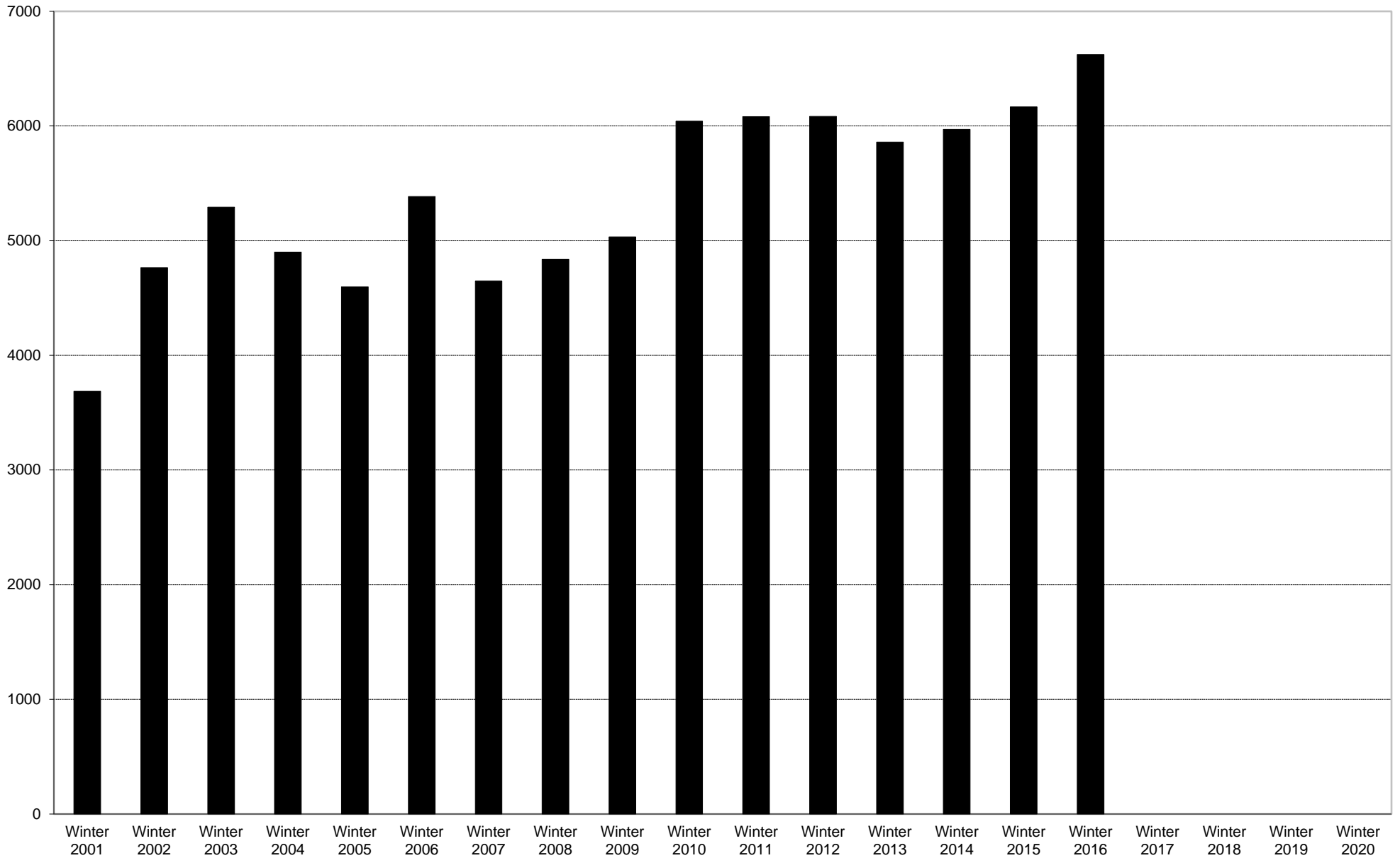
University of California, San Diego Survey of Pedestrian and Vehicular Traffic
Commuters Entering on Typical Weekday
At Health Sciences Drive: By Single-Occupant Automobile: Percentage of Total Commuters



University of California, San Diego Survey of Pedestrian and Vehicular Traffic
Commuters Entering on Typical Weekday
At Health Sciences Drive: By Single-Occupant Automobile: Volumes



University of California, San Diego Survey of Pedestrian and Vehicular Traffic
Commuters Entering on Typical Weekday
At Health Sciences Drive: Total Commuters: Volumes



■ Total Commuters Entering

