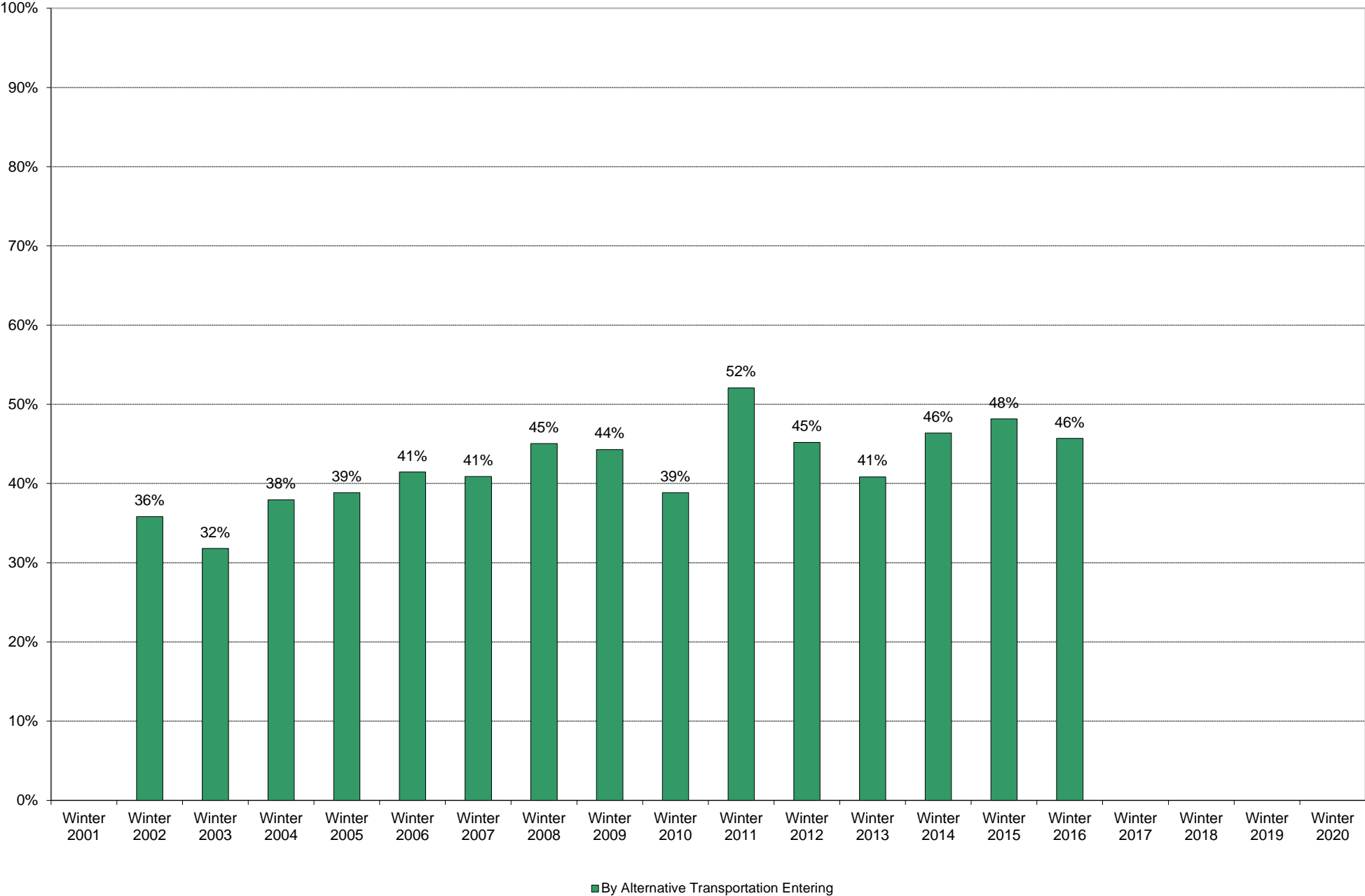
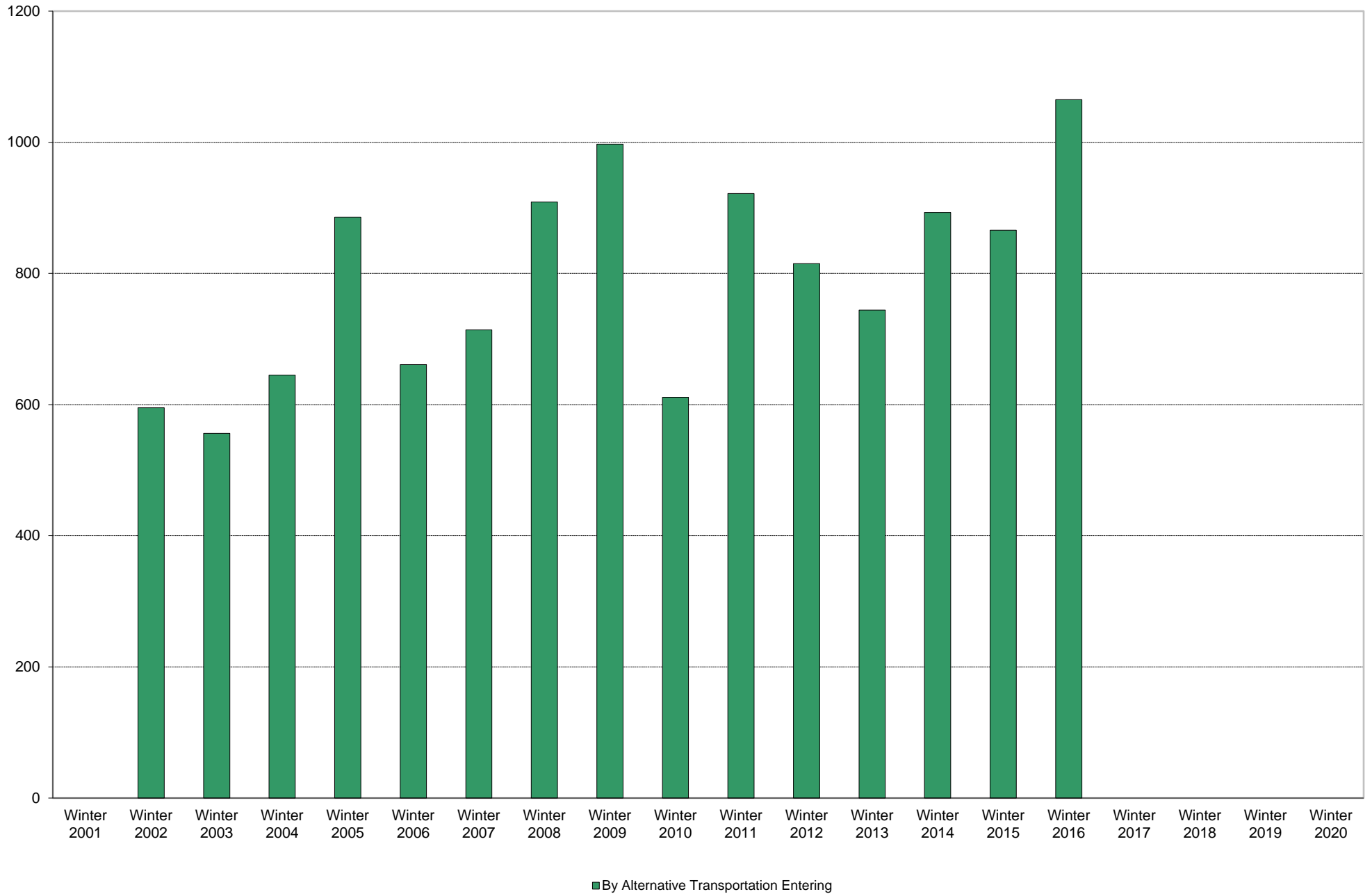


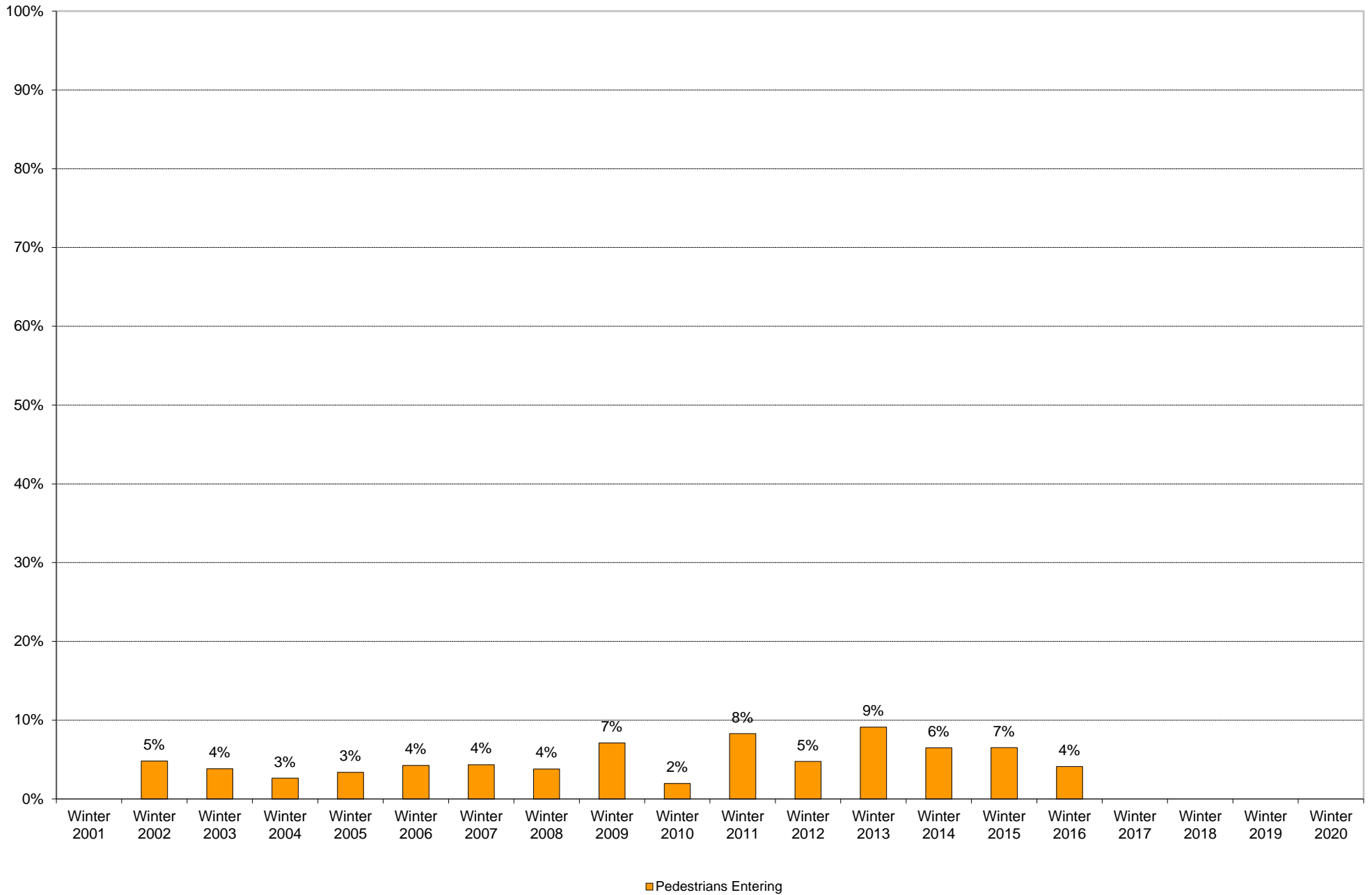
University of California, San Diego Survey of Pedestrian and Vehicular Traffic
Commuters Entering on Typical Weekday
At Pangea Drive: By Alternative Transportation: Percentage of Total Commuters



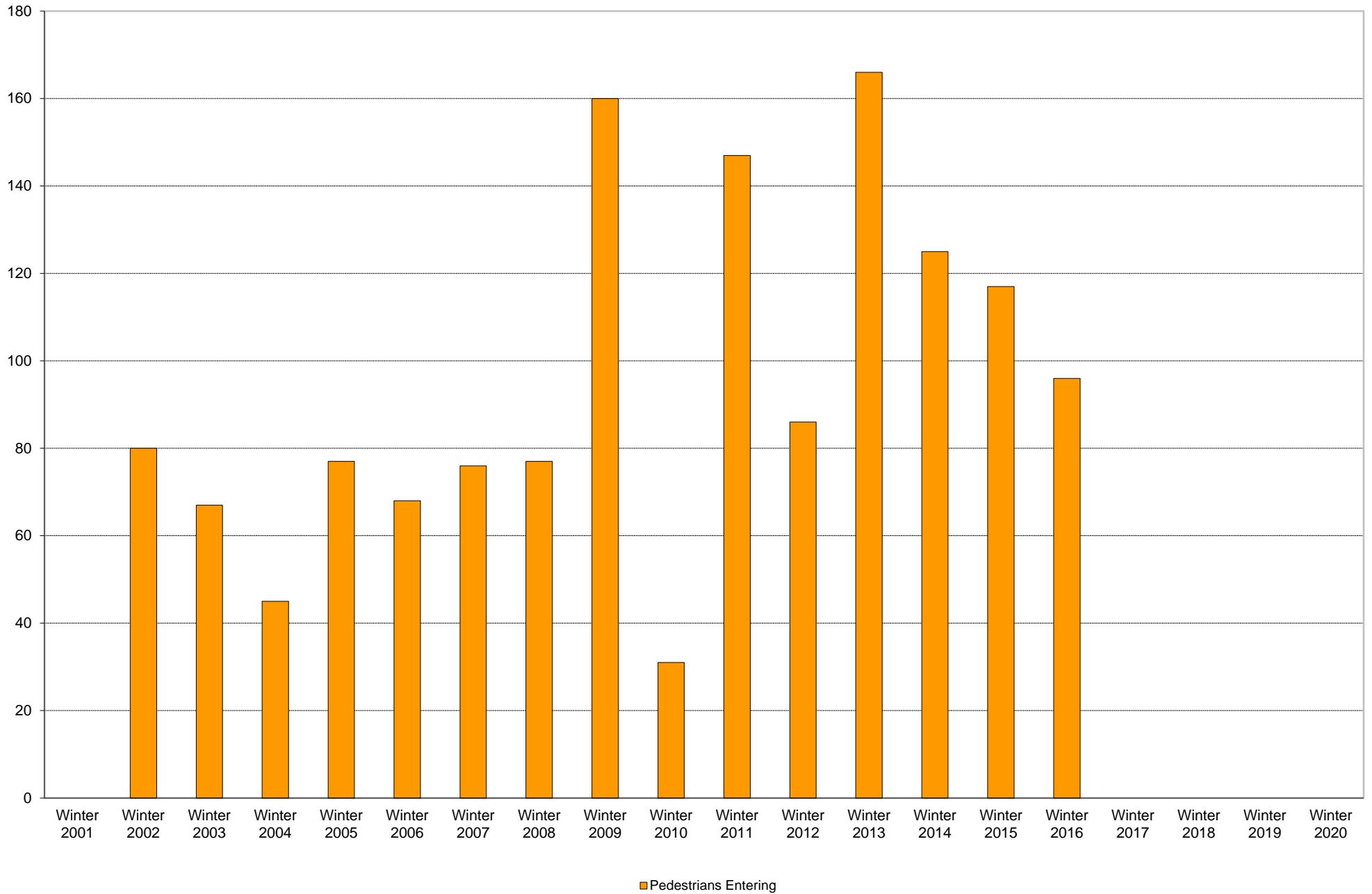
University of California, San Diego Survey of Pedestrian and Vehicular Traffic
Commuters Entering on Typical Weekday
At Pangea Drive: By Alternative Transportation: Volumes



University of California, San Diego Survey of Pedestrian and Vehicular Traffic
Commuters Entering on Typical Weekday
At Pangea Drive: Pedestrians: Percentage of Total Commuters



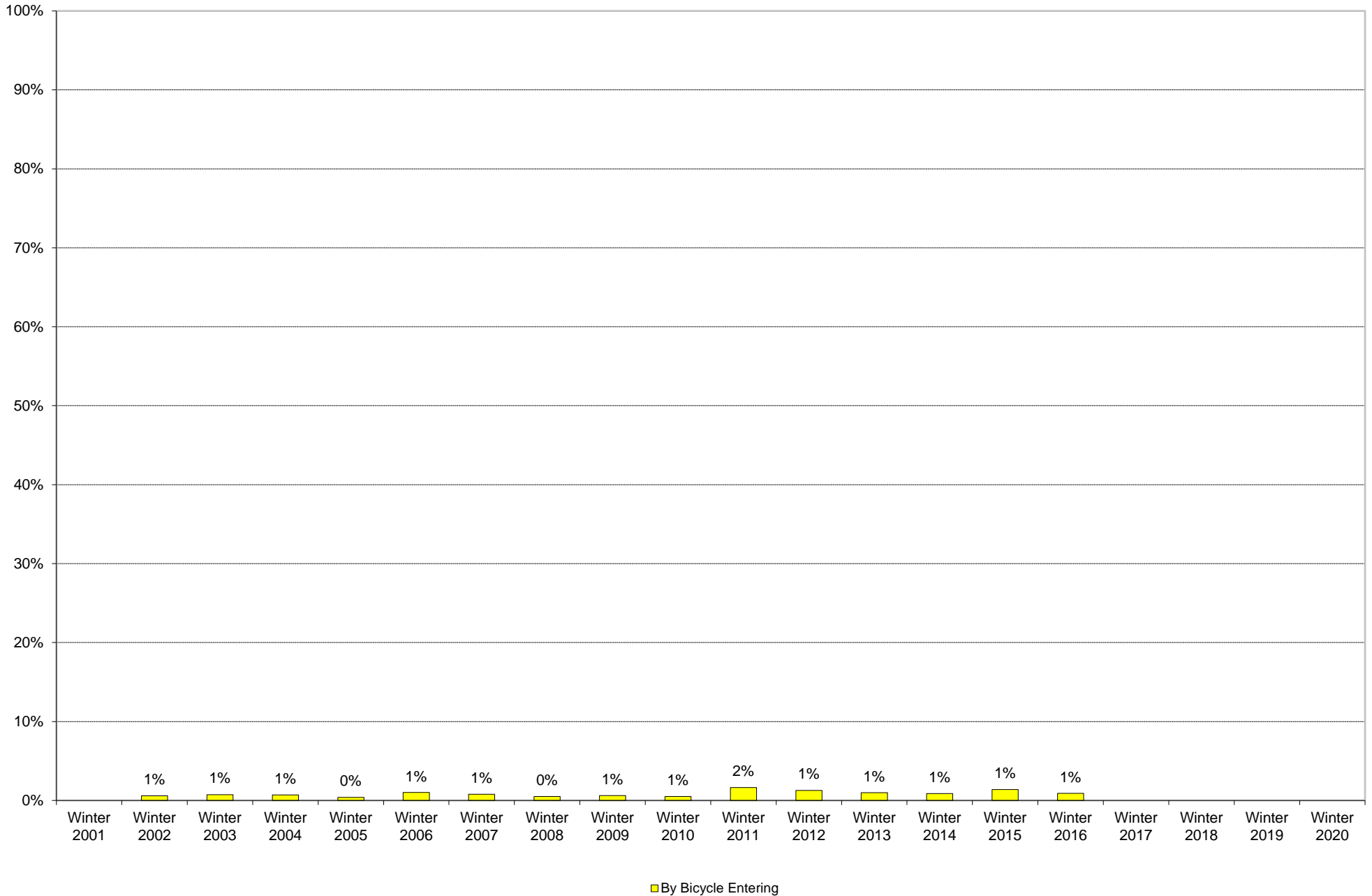
University of California, San Diego Survey of Pedestrian and Vehicular Traffic
Commuters Entering on Typical Weekday
At Pangea Drive: Pedestrians: Volumes



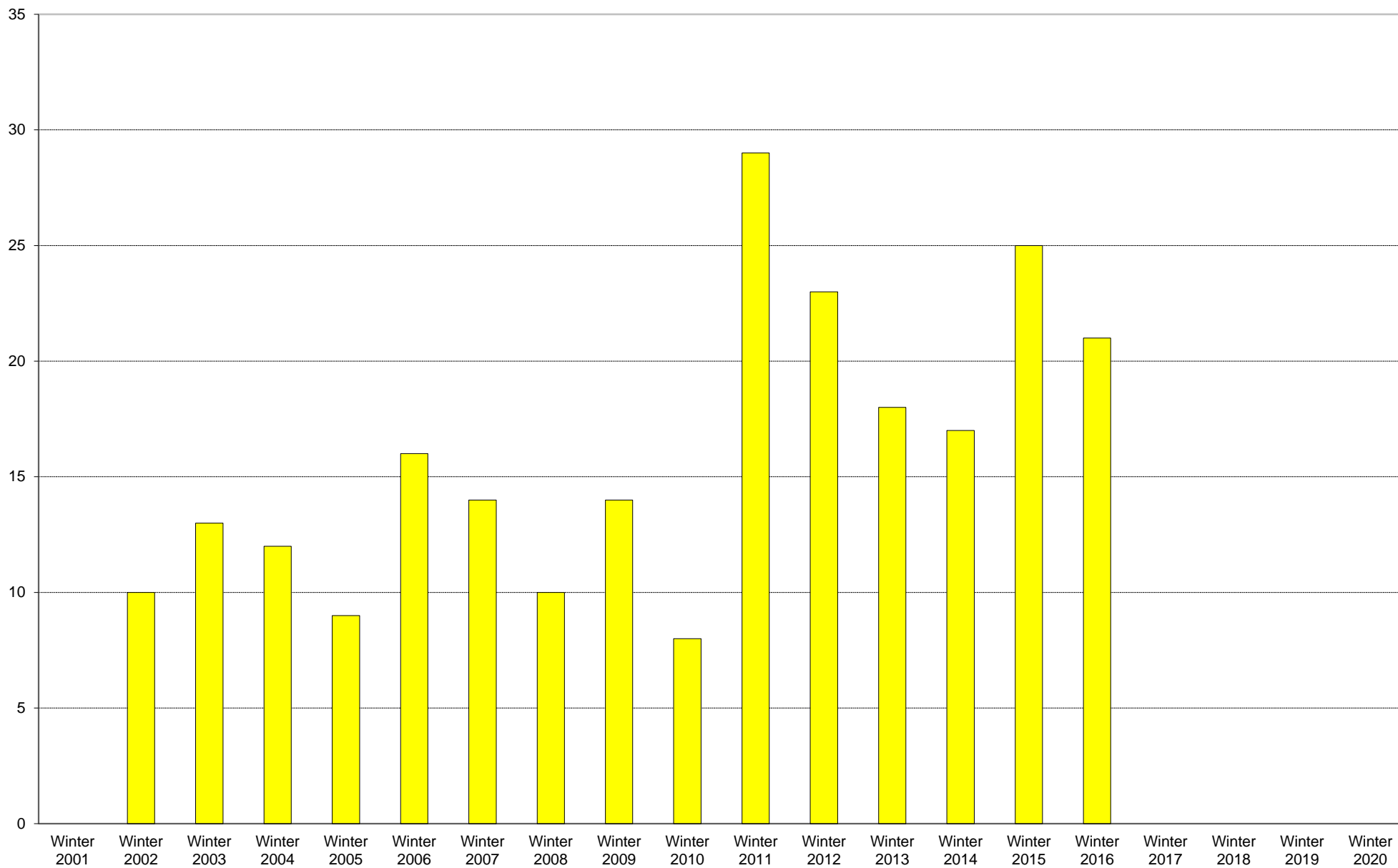
University of California, San Diego Survey of Pedestrian and Vehicular Traffic
 Commuters Entering on Typical Weekday
 At Pangea Drive: Pedestrians

	6am to 7am	7am to 8am	8am to 9am	9am to 10am	10am to 11am	11am to 12pm	12pm to 1pm	1pm to 2pm	2pm to 3pm	3pm to 4pm	4pm to 5pm	5pm to 6pm	6pm to 7pm	7pm to 8pm	8pm to 9pm	9pm to 10pm	Total	Percentage of Total Commuters
Winter 2001																		
Winter 2002	1	7	8	2	4	2	17	7	6	4	3	14	3		2		80	5%
Winter 2003	6	7	2	7	5	11	6	1	1	6	2	6	3	3	1		67	4%
Winter 2004		4	1	2	3	3	6		7	7	1		3	7		1	45	3%
Winter 2005		4	10	3	5	4	10	3	6	2	10	3	11	1	2	3	77	3%
Winter 2006	2	5	2	3	9	5	2	2	6	6	4	8	9	1	2	2	68	4%
Winter 2007	2	4	4	9	5	3	11	4	5	4	4	12	6		2	1	76	4%
Winter 2008			7	2	5	2	9	4	6	10	2	7	3	16		4	77	4%
Winter 2009	4	5	8	13	12	8	7	9	21	15	21	21	7	4		5	160	7%
Winter 2010		2	1	6	4	3	1	1	1	3	1	3	1	1	1	2	31	2%
Winter 2011	1	17	39	12	6	7	7	7	1	4	11	17	8	1	6	3	147	8%
Winter 2012			11	9	8	15	10	5	1	4	7	10	5	1			86	5%
Winter 2013		3	4	10	2	6	1	19	23	16	30	12	23	11	1	5	166	9%
Winter 2014	2	4	10	7	7	1	15	25	8	7	14	8	3	12	1	1	125	6%
Winter 2015	1	6	10	8	2	5	23	7	7	7	12	12	12	4		1	117	7%
Winter 2016		6	7	4	8	14	12	6	3	5	15	3	6	1	2	4	96	4%
Winter 2017																		
Winter 2018																		
Winter 2019																		
Winter 2020																		

University of California, San Diego Survey of Pedestrian and Vehicular Traffic
Commuters Entering on Typical Weekday
At Pangea Drive: By Bicycle: Percentage of Total Commuters

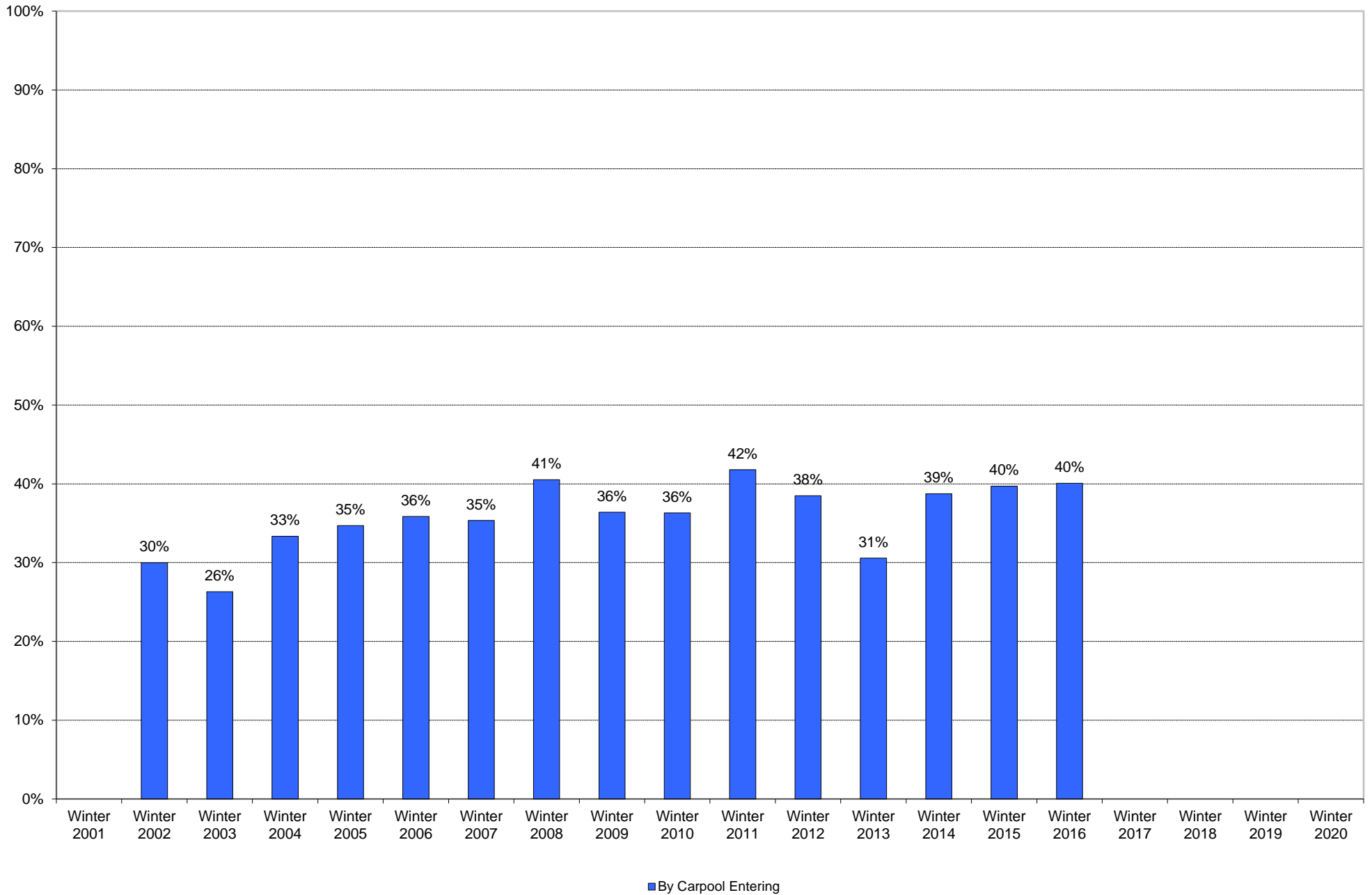


University of California, San Diego Survey of Pedestrian and Vehicular Traffic
Commuters Entering on Typical Weekday
At Pangea Drive: By Bicycle: Volumes

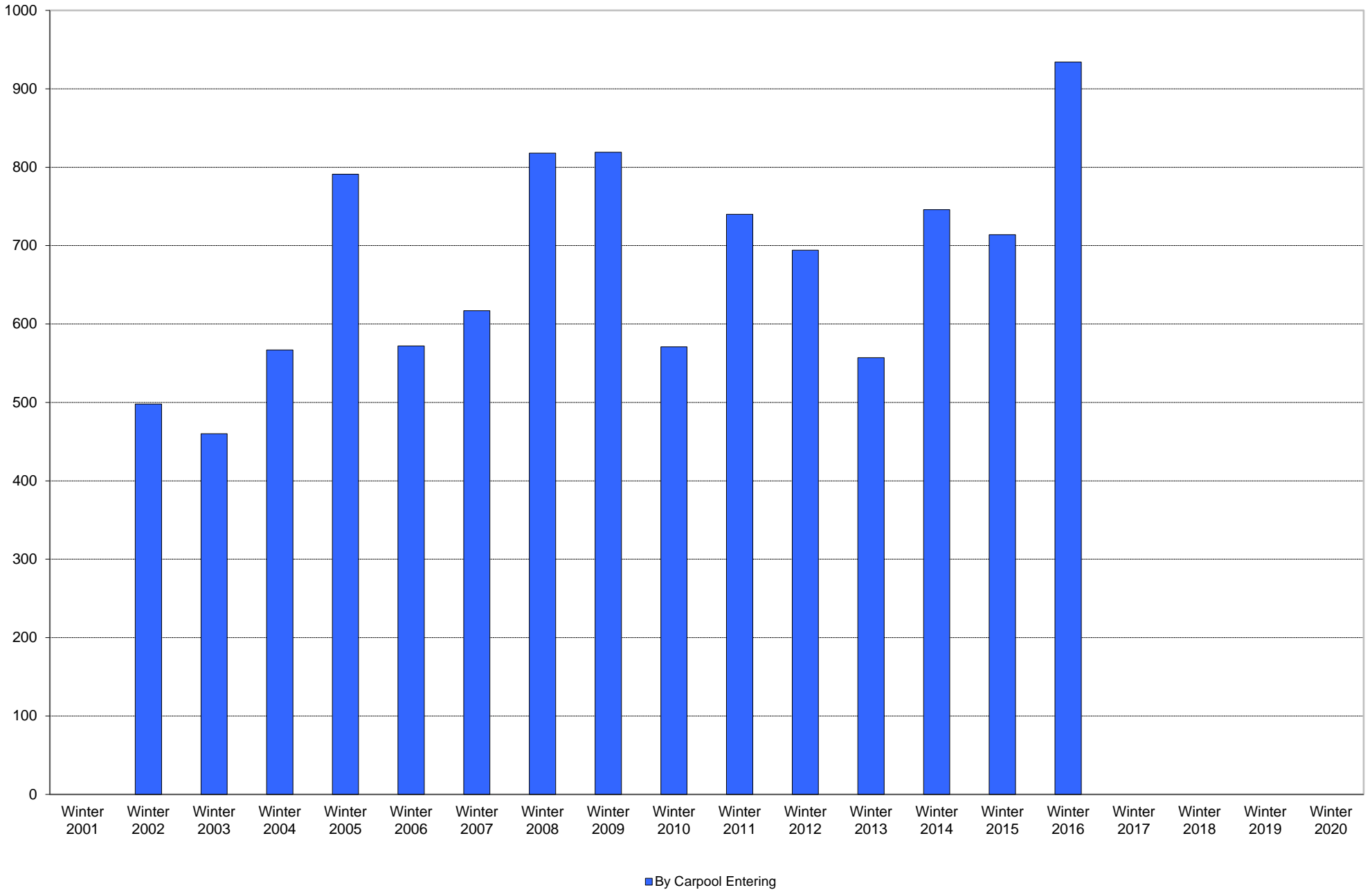


■ By Bicycle Entering

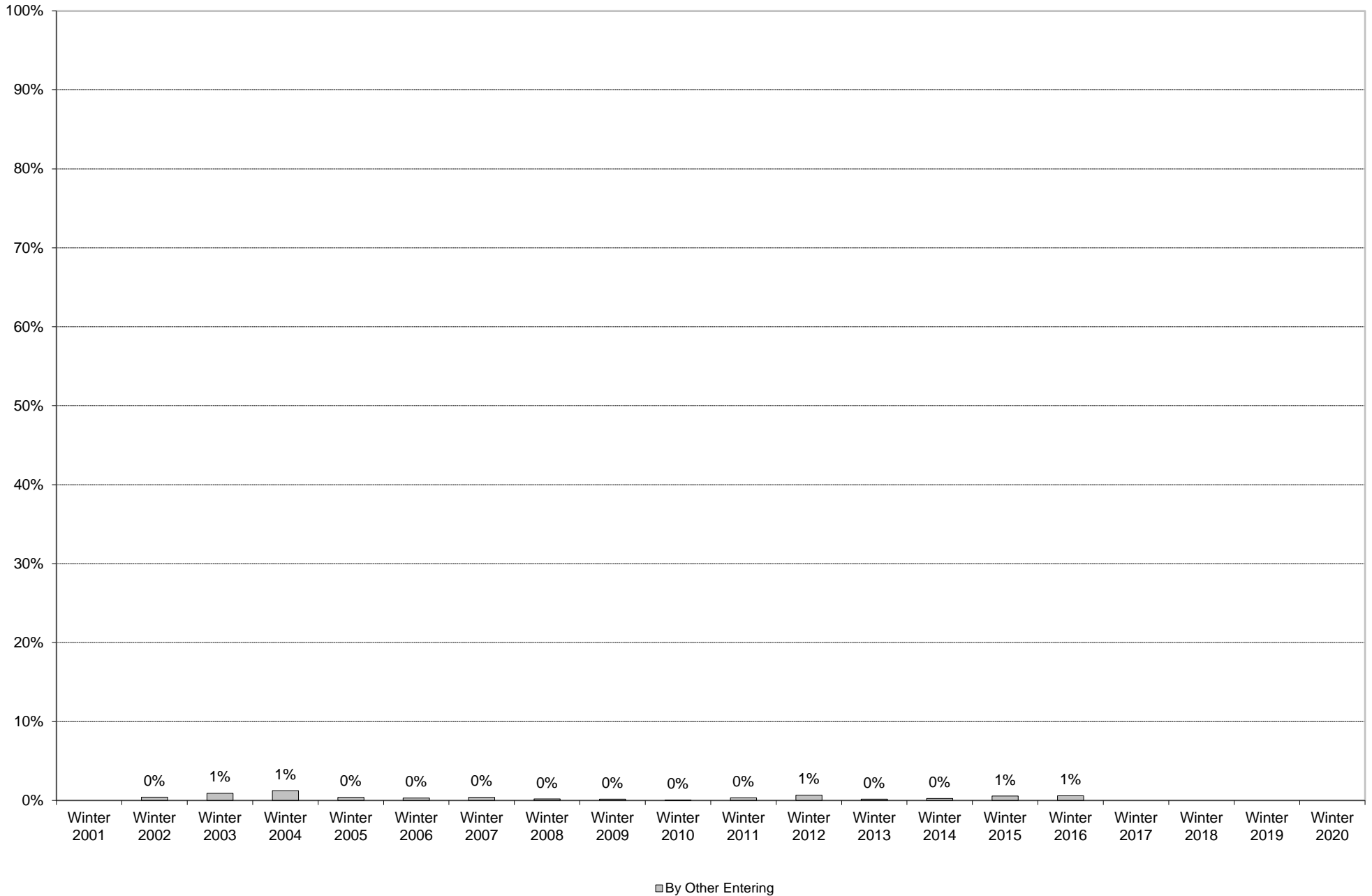
University of California, San Diego Survey of Pedestrian and Vehicular Traffic
Commuters Entering on Typical Weekday
At Pangea Drive: By Carpool: Percentage of Total Commuters



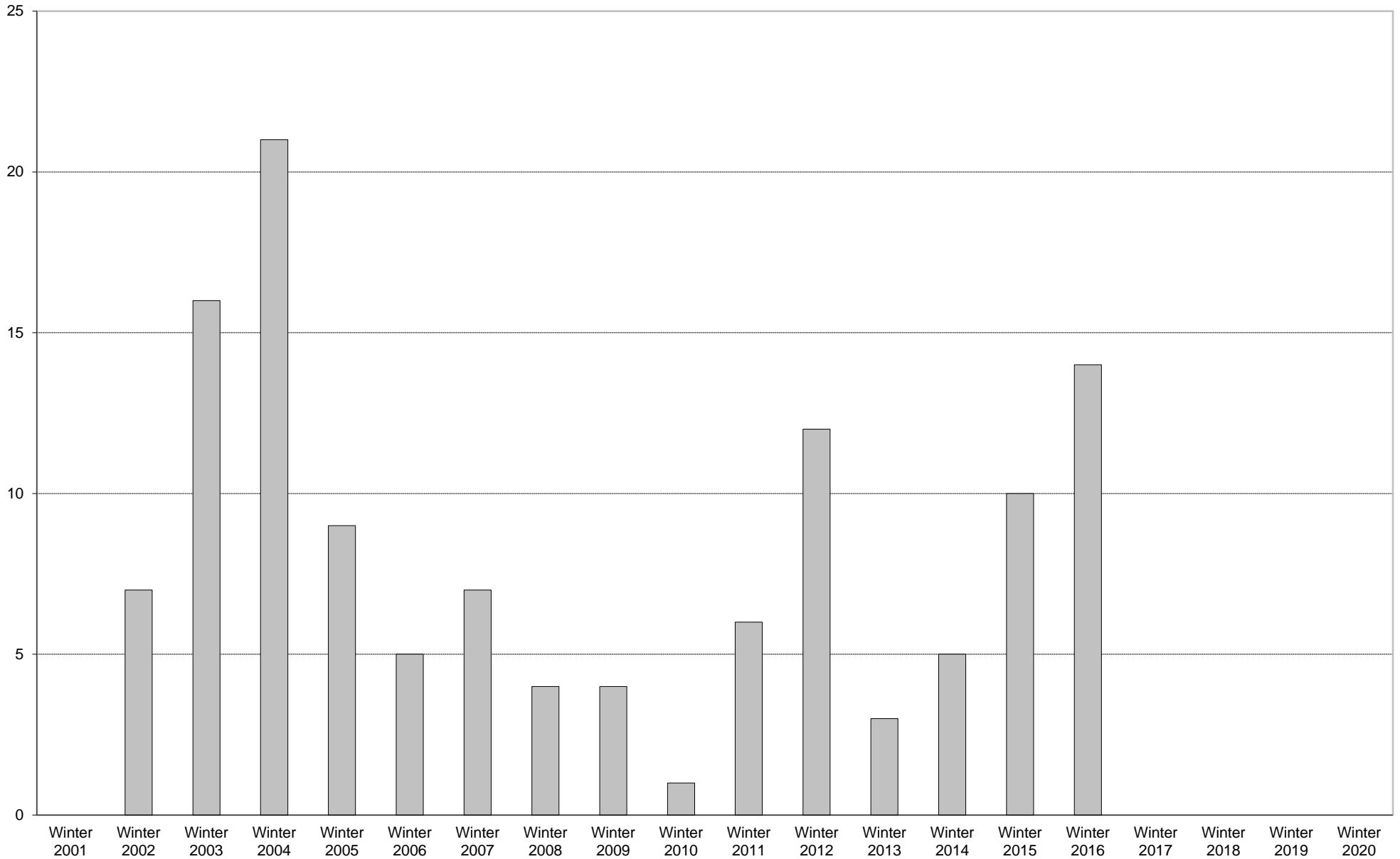
University of California, San Diego Survey of Pedestrian and Vehicular Traffic
Commuters Entering on Typical Weekday
At Pangea Drive: By Carpool: Volumes



University of California, San Diego Survey of Pedestrian and Vehicular Traffic
Commuters Entering on Typical Weekday
At Pangea Drive: By Other: Percentage of Total Commuters



University of California, San Diego Survey of Pedestrian and Vehicular Traffic
Commuters Entering on Typical Weekday
At Pangea Drive: By Other: Volumes



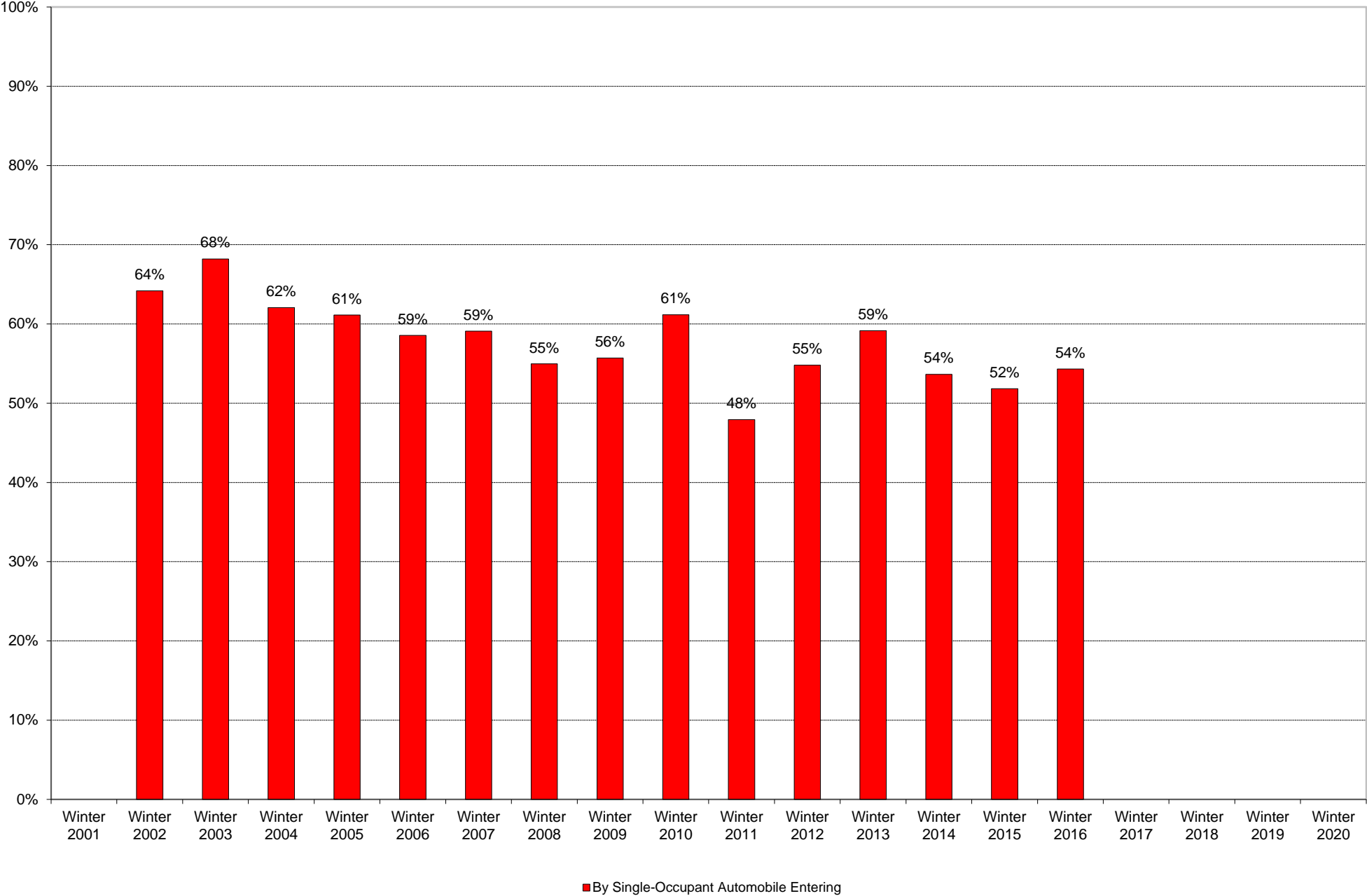
By Other Entering

University of California, San Diego Survey of Pedestrian and Vehicular Traffic
Commuters Entering on Typical Weekday
At Pangea Drive: By Other

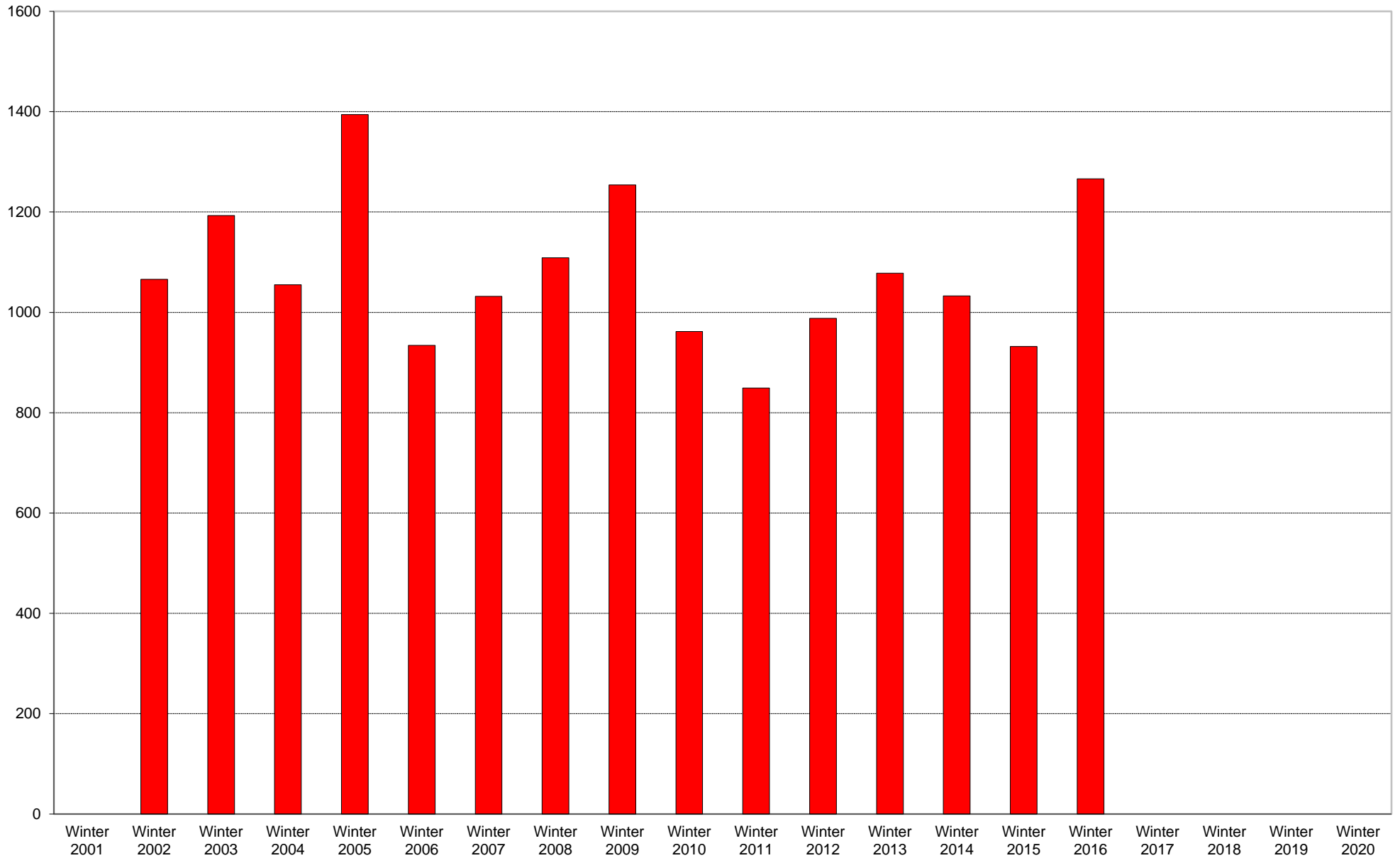
	6am to 7am	7am to 8am	8am to 9am	9am to 10am	10am to 11am	11am to 12pm	12pm to 1pm	1pm to 2pm	2pm to 3pm	3pm to 4pm	4pm to 5pm	5pm to 6pm	6pm to 7pm	7pm to 8pm	8pm to 9pm	9pm to 10pm	Total	Percentage of Total Commuters
Winter 2001																		
Winter 2002				3				2		1	1						7	0%
Winter 2003		10	1	1		1	1	2									16	1%
Winter 2004		10		1	3			1	1		1	1	1	1		1	21	1%
Winter 2005					1	1	2	1				1	2		1		9	0%
Winter 2006				1		2	1					1					5	0%
Winter 2007				1	2								1		2	1	7	0%
Winter 2008			1		1		1						1				4	0%
Winter 2009			1	2		1											4	0%
Winter 2010								1									1	0%
Winter 2011		2	1		1		1								1		6	0%
Winter 2012	1		1	2	1				3		1	1			2		12	1%
Winter 2013								1							2		3	0%
Winter 2014		3						2									5	0%
Winter 2015	4							3		1	1		1				10	1%
Winter 2016		7		1	3	1						1		1			14	1%
Winter 2017																		
Winter 2018																		
Winter 2019																		
Winter 2020																		

Includes motorcycle and vanpool.

University of California, San Diego Survey of Pedestrian and Vehicular Traffic
Commuters Entering on Typical Weekday
At Pangea Drive: By Single-Occupant Automobile: Percentage of Total Commuters



University of California, San Diego Survey of Pedestrian and Vehicular Traffic
Commuters Entering on Typical Weekday
At Pangea Drive: By Single-Occupant Automobile: Volumes

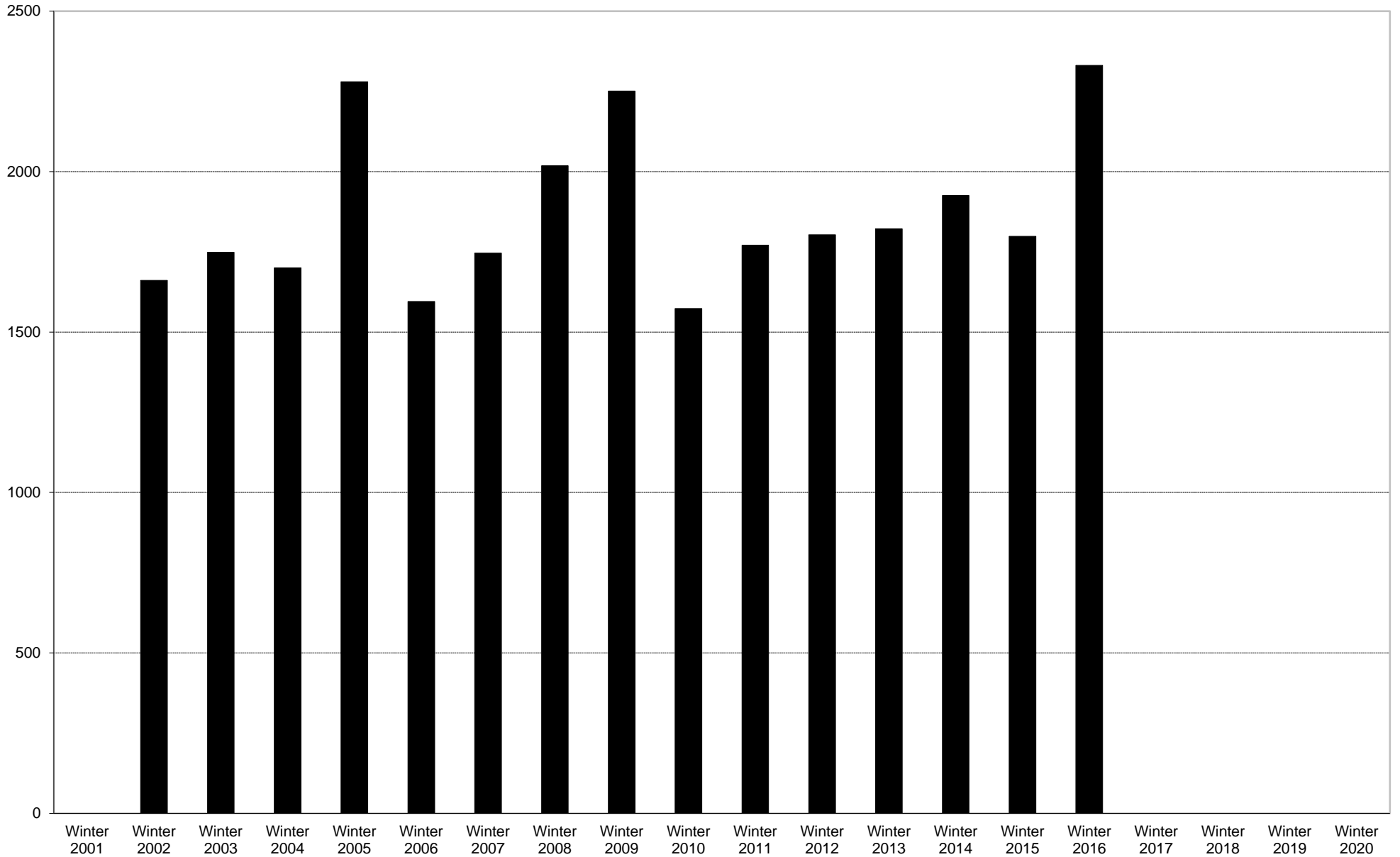


■ By Single-Occupant Automobile Entering

University of California, San Diego Survey of Pedestrian and Vehicular Traffic
 Commuters Entering on Typical Weekday
 At Pangea Drive: By Single-Occupant Automobile

	6am to 7am	7am to 8am	8am to 9am	9am to 10am	10am to 11am	11am to 12pm	12pm to 1pm	1pm to 2pm	2pm to 3pm	3pm to 4pm	4pm to 5pm	5pm to 6pm	6pm to 7pm	7pm to 8pm	8pm to 9pm	9pm to 10pm	Total	Percentage of Total Commuters
Winter 2001																		
Winter 2002	7	86	121	206	92	78	74	46	70	49	43	52	68	32	23	19	1066	64%
Winter 2003	16	99	137	185	99	59	89	91	65	63	50	98	76	24	21	21	1193	68%
Winter 2004	19	95	80	134	85	48	50	60	95	44	104	56	66	48	38	33	1055	62%
Winter 2005	23	79	120	181	111	97	104	68	54	69	70	149	128	63	47	31	1394	61%
Winter 2006	15	66	48	78	76	49	85	67	48	53	61	96	81	45	34	32	934	59%
Winter 2007	12	52	91	157	79	51	68	45	55	45	92	83	87	51	24	40	1032	59%
Winter 2008	18	84	127	130	118	67	68	67	45	56	47	83	66	43	50	40	1109	55%
Winter 2009	33	115	119	156	114	72	97	76	45	48	67	71	101	46	44	50	1254	56%
Winter 2010	14	83	83	109	73	55	65	56	50	44	74	55	69	41	55	36	962	61%
Winter 2011	23	48	82	86	46	40	66	60	40	43	67	71	75	37	41	24	849	48%
Winter 2012	20	43	95	92	76	53	68	58	45	36	86	128	72	34	44	38	988	55%
Winter 2013	30	102	86	124	94	63	66	65	37	72	70	65	50	65	43	46	1078	59%
Winter 2014	30	117	88	98	90	89	72	50	46	33	56	111	43	31	36	43	1033	54%
Winter 2015	34	113	77	122	54	55	83	50	27	52	74	56	53	33	22	27	932	52%
Winter 2016	35	146	94	131	72	59	84	74	56	58	97	126	90	64	41	39	1266	54%
Winter 2017																		
Winter 2018																		
Winter 2019																		
Winter 2020																		

University of California, San Diego Survey of Pedestrian and Vehicular Traffic
Commuters Entering on Typical Weekday
At Pangea Drive: Total Commuters: Volumes



■ Total Commuters Entering

