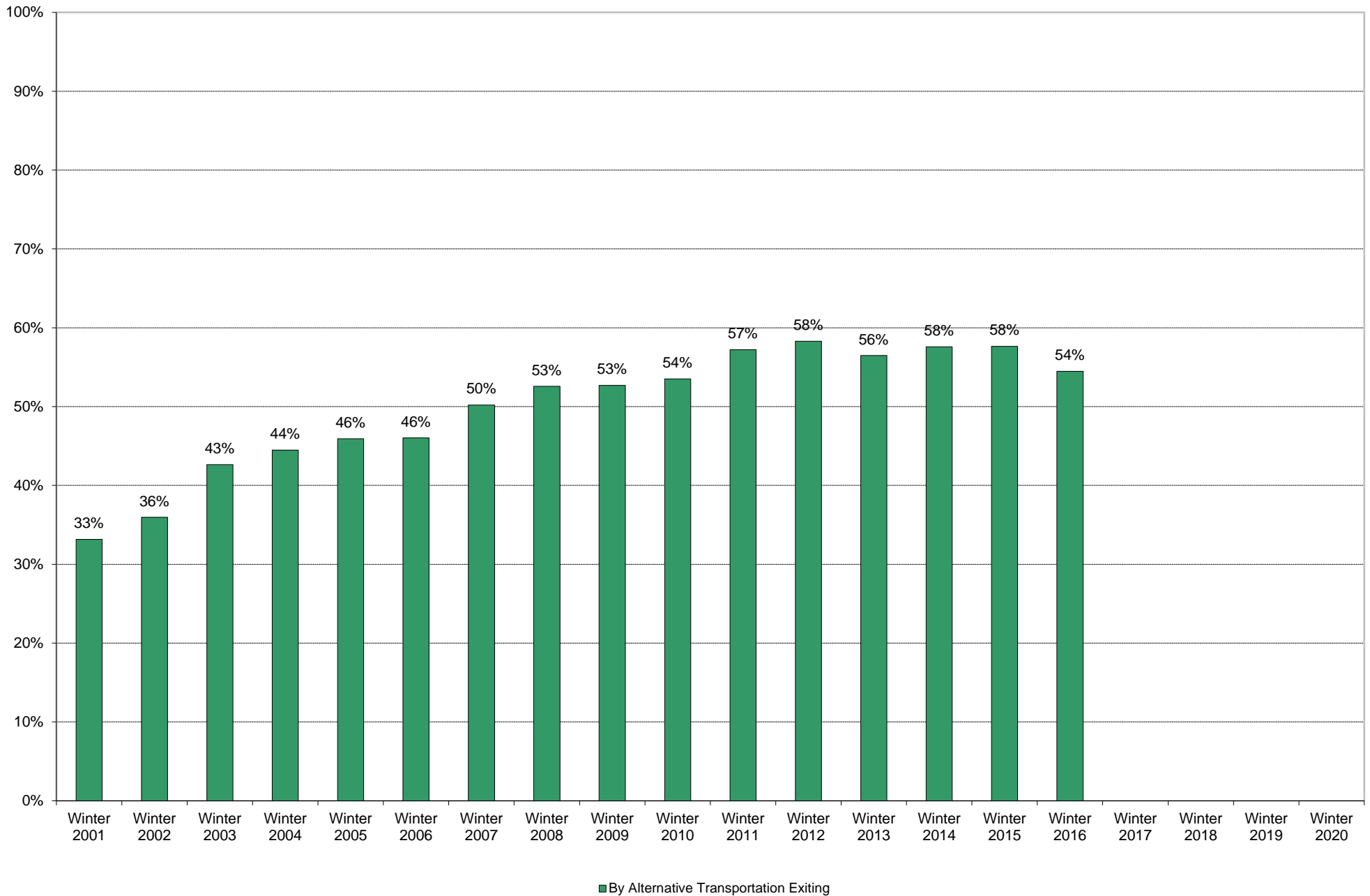
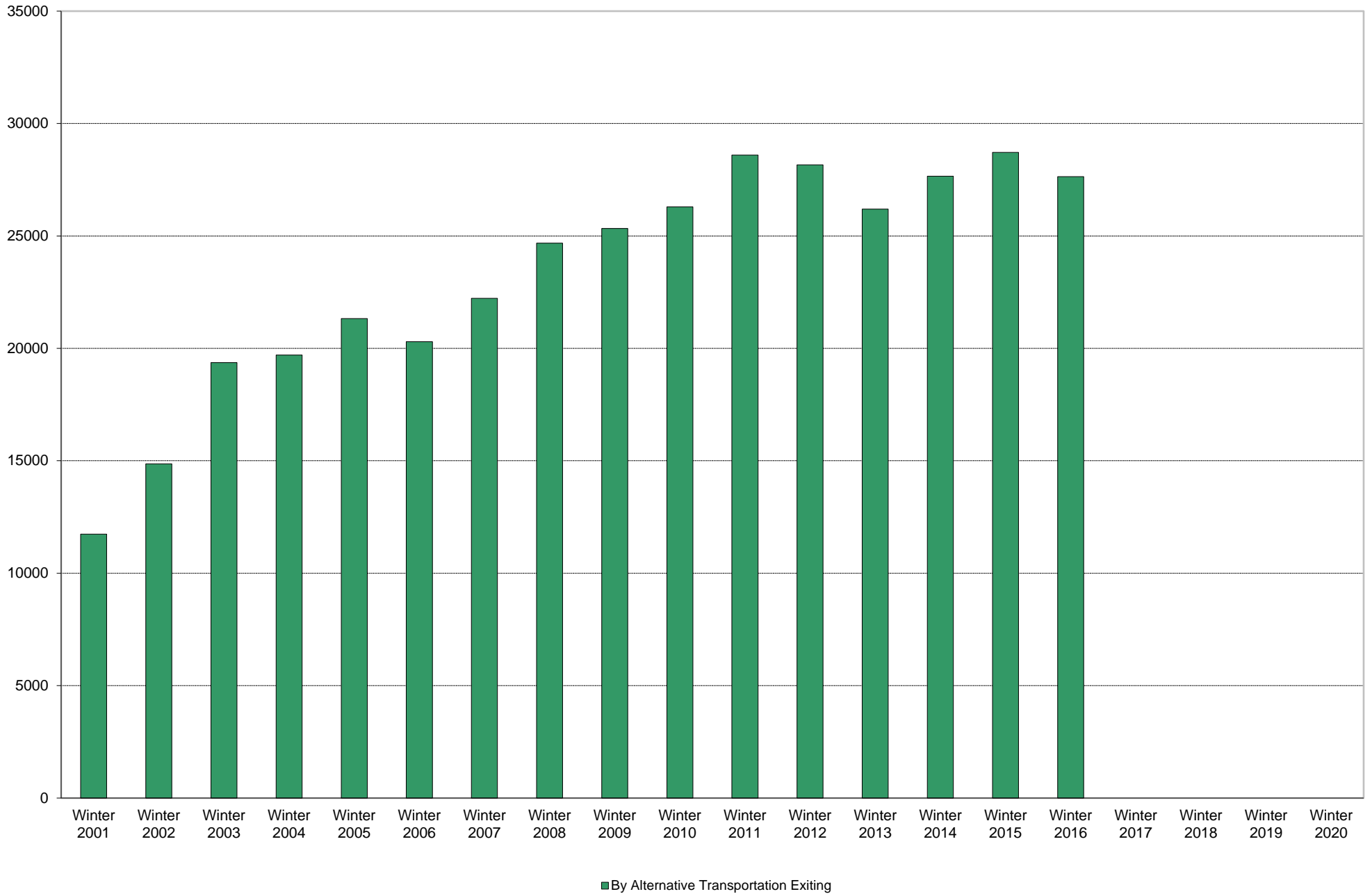


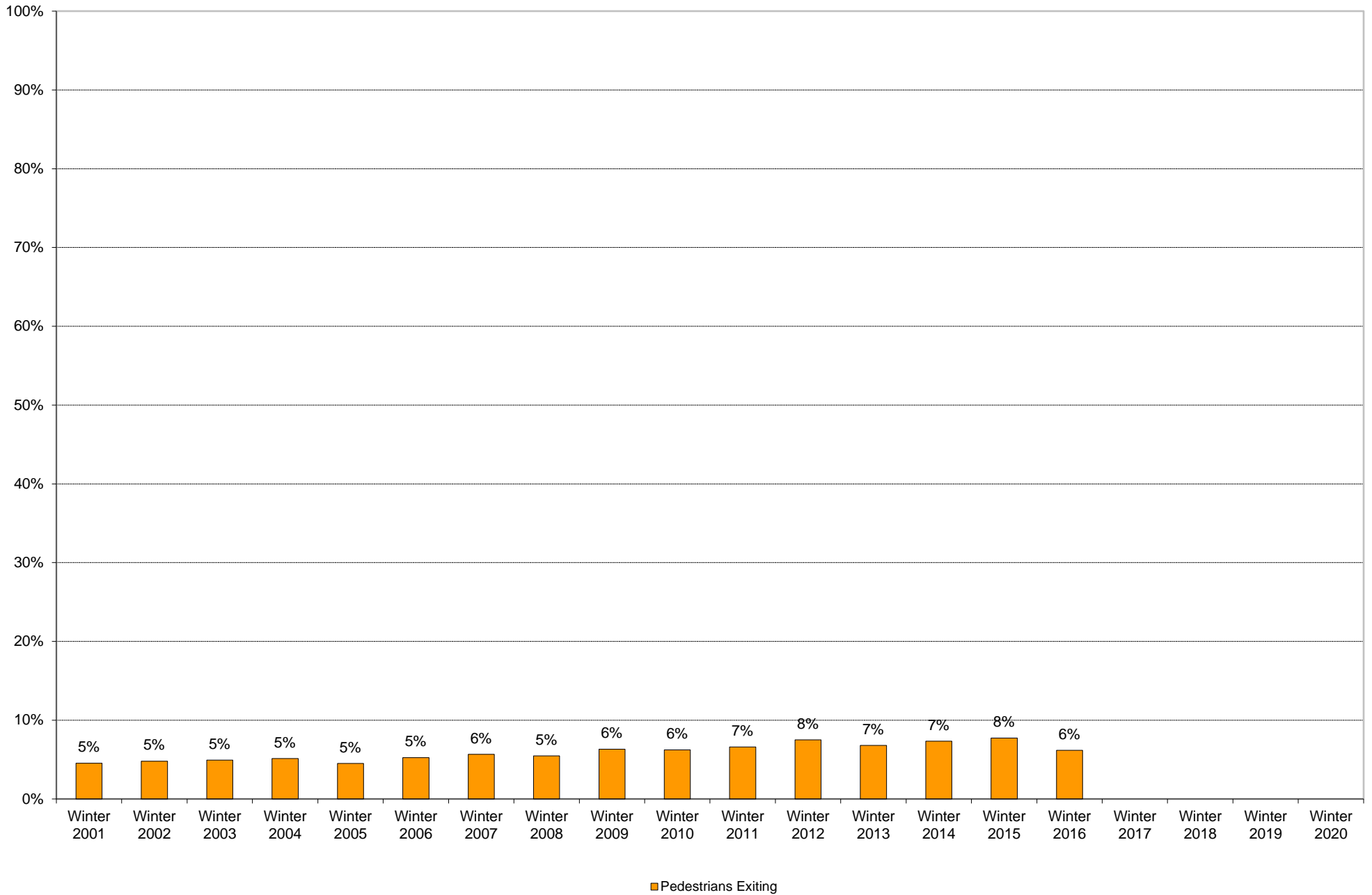
University of California, San Diego Survey of Pedestrian and Vehicular Traffic
Commuters Exiting on Typical Weekday
La Jolla Campus: By Alternative Transportation: Percentage of Total Commuters



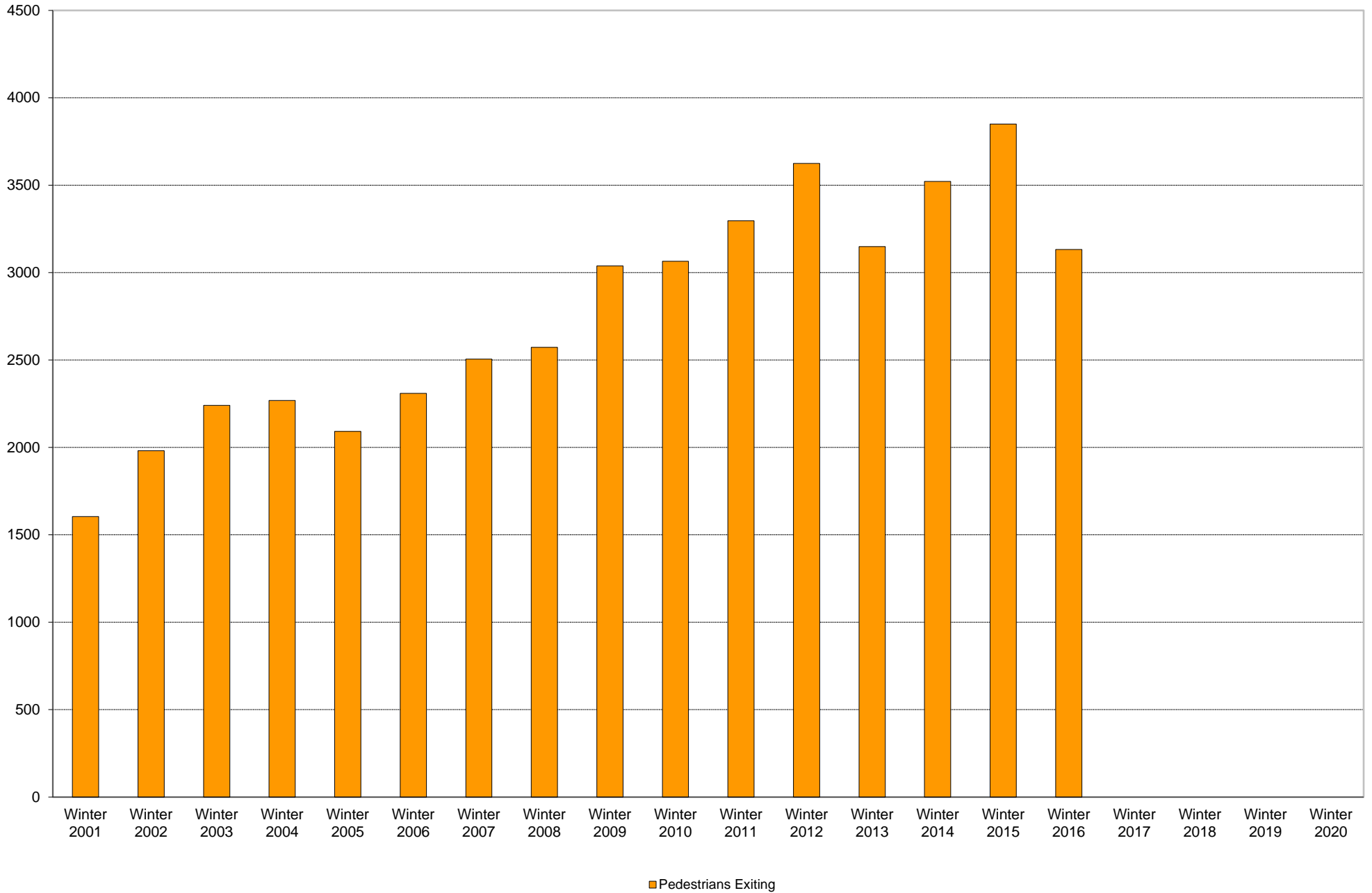
University of California, San Diego Survey of Pedestrian and Vehicular Traffic
Commuters Exiting on Typical Weekday
La Jolla Campus: By Alternative Transportation: Volumes



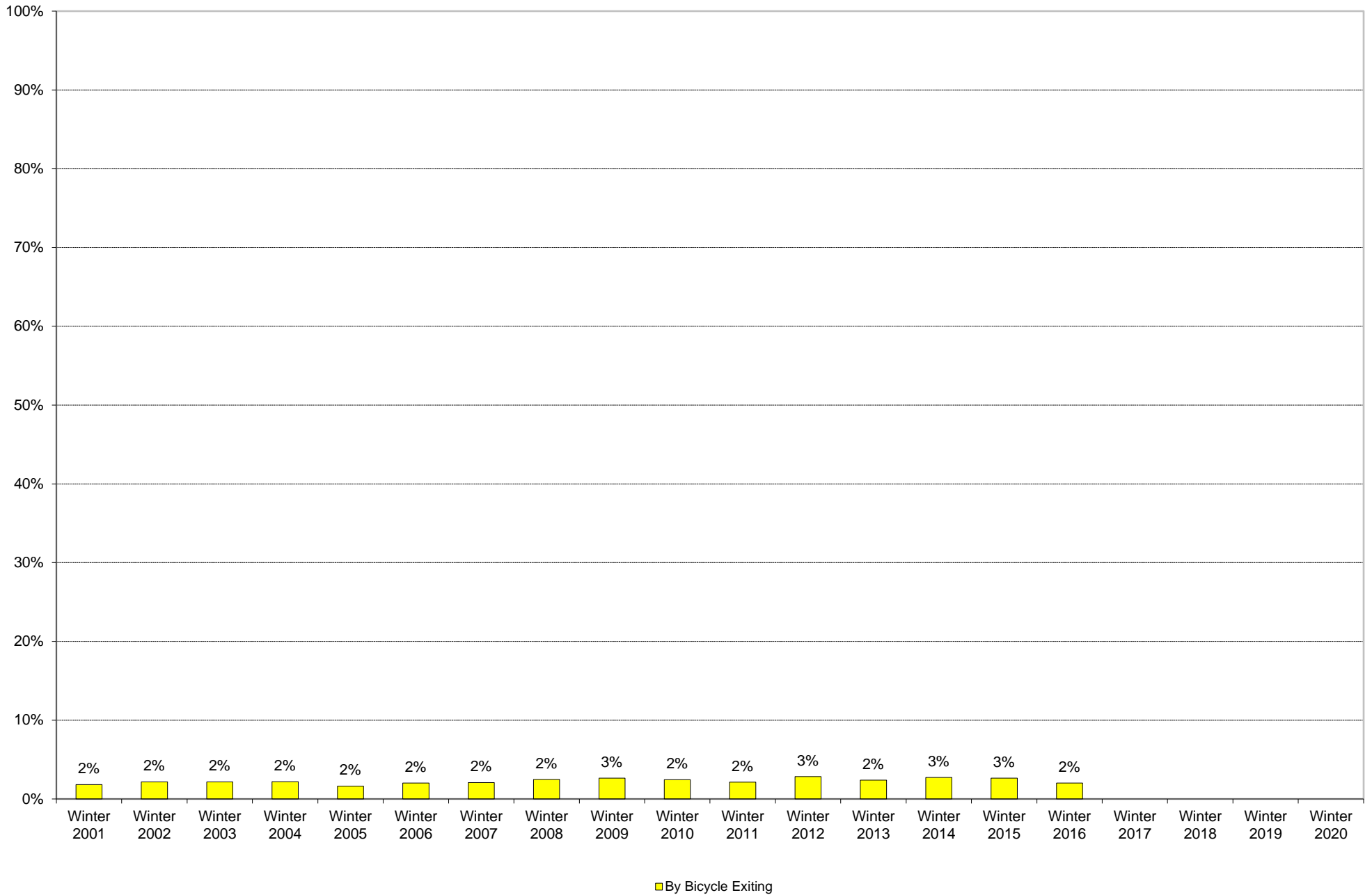
University of California, San Diego Survey of Pedestrian and Vehicular Traffic
Commuters Exiting on Typical Weekday
La Jolla Campus: Pedestrians: Percentage of Total Commuters



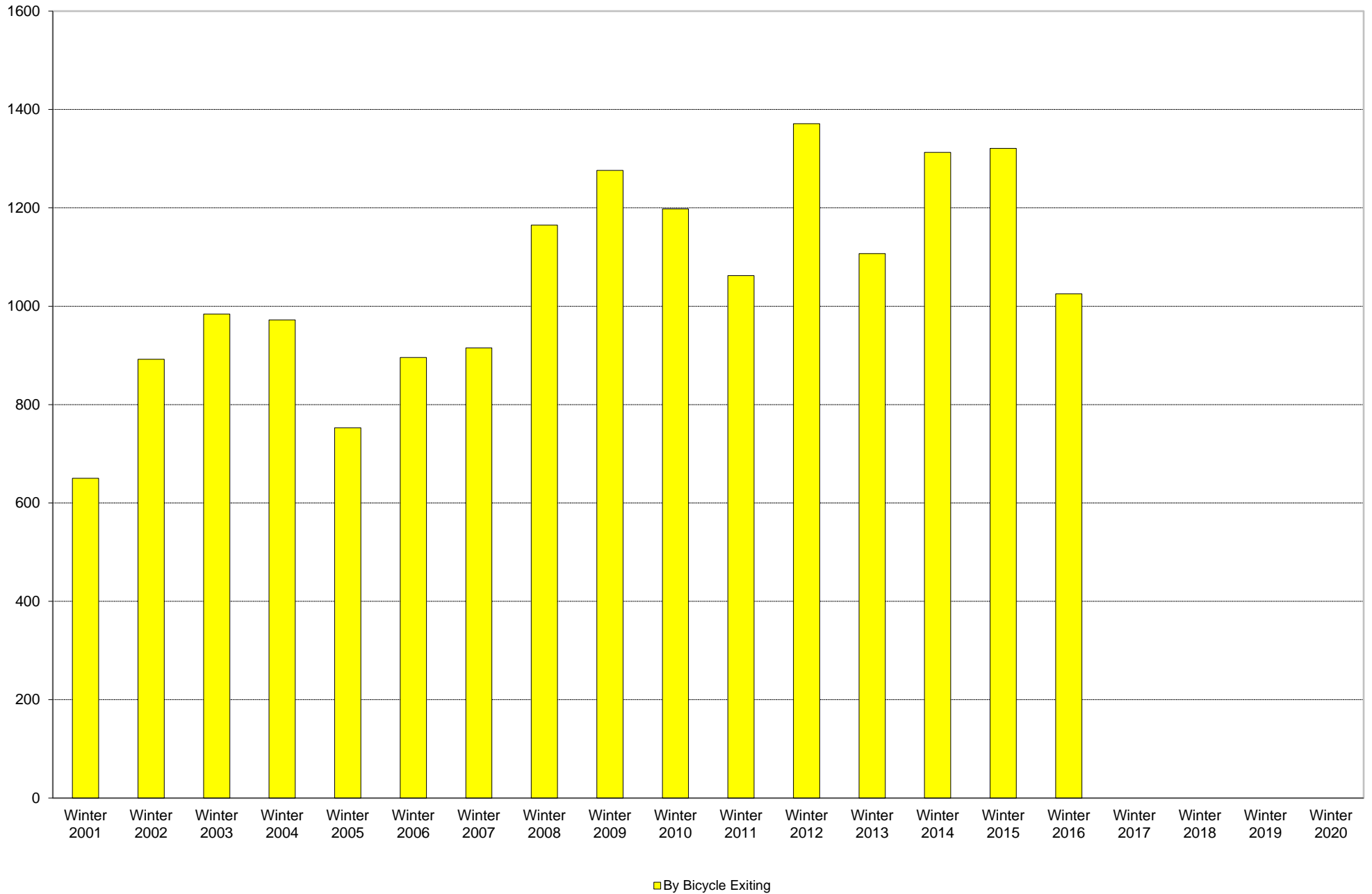
University of California, San Diego Survey of Pedestrian and Vehicular Traffic
Commuters Exiting on Typical Weekday
La Jolla Campus: Pedestrians: Volumes



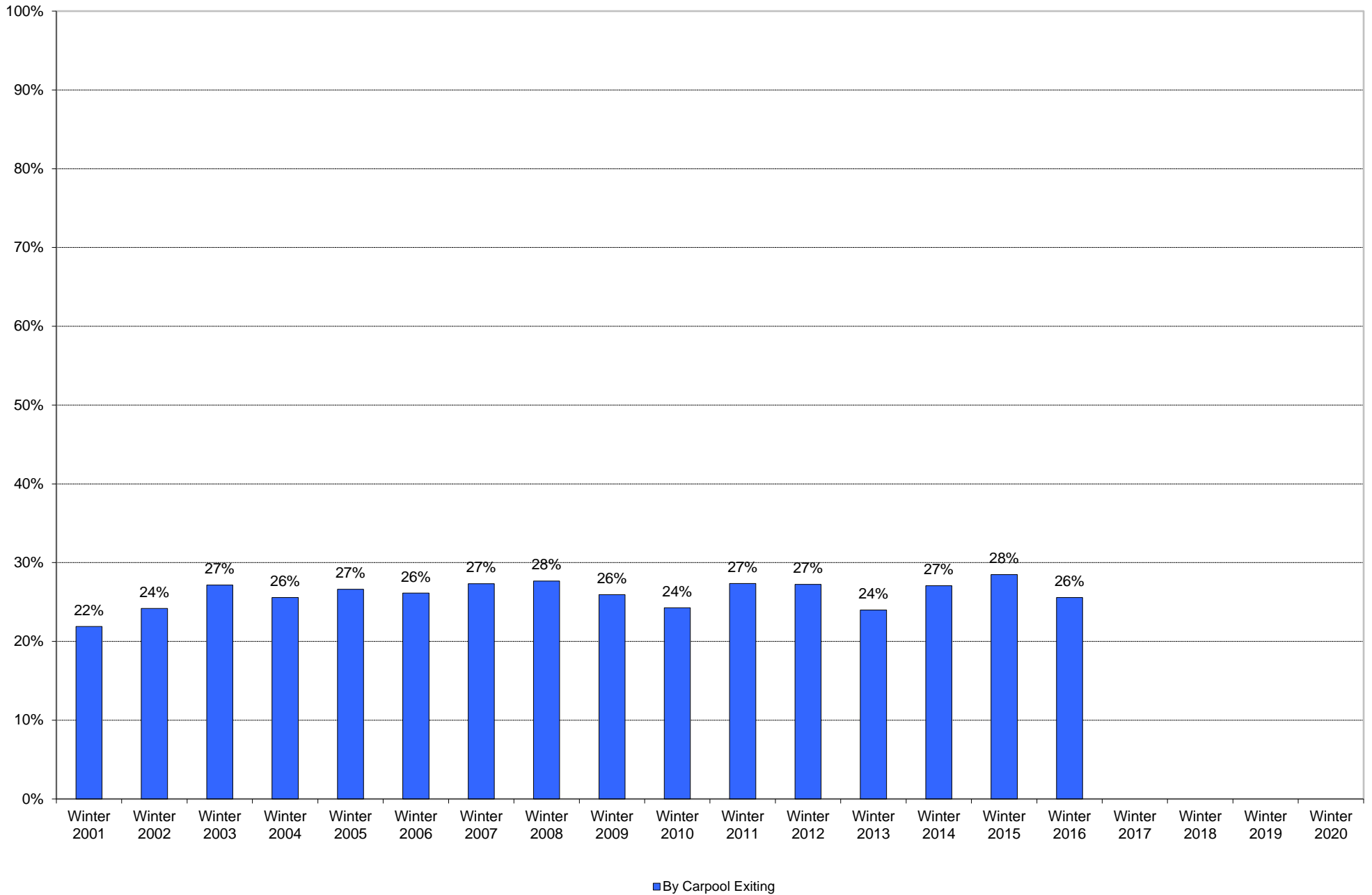
University of California, San Diego Survey of Pedestrian and Vehicular Traffic
Commuters Exiting on Typical Weekday
La Jolla Campus: By Bicycle: Percentage of Total Commuters



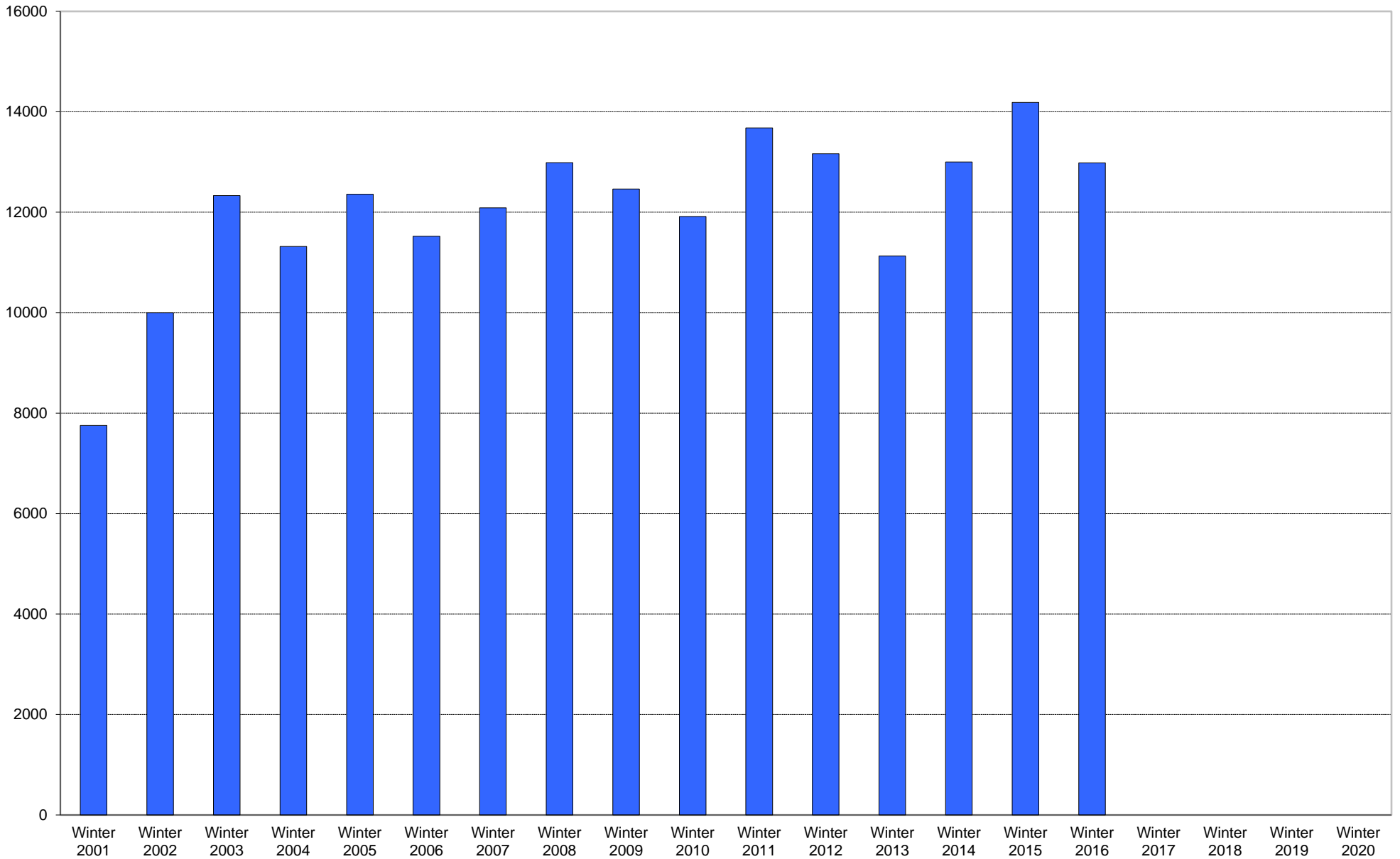
University of California, San Diego Survey of Pedestrian and Vehicular Traffic
Commuters Exiting on Typical Weekday
La Jolla Campus: By Bicycle: Volumes



University of California, San Diego Survey of Pedestrian and Vehicular Traffic
Commuters Exiting on Typical Weekday
La Jolla Campus: By Carpool: Percentage of Total Commuters

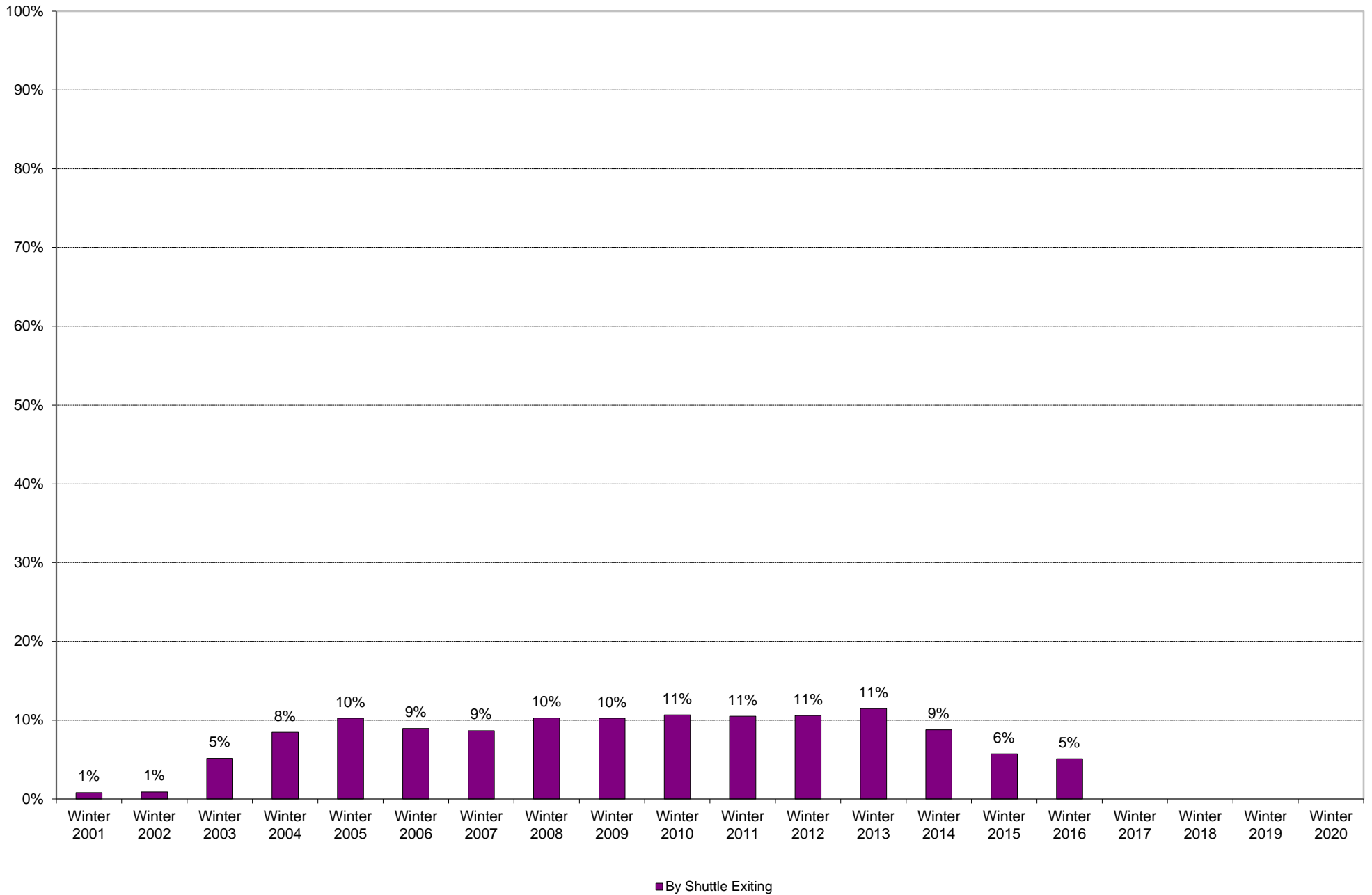


University of California, San Diego Survey of Pedestrian and Vehicular Traffic
Commuters Exiting on Typical Weekday
La Jolla Campus: By Carpool: Volumes



■ By Carpool Exiting

University of California, San Diego Survey of Pedestrian and Vehicular Traffic
Commuters Exiting on Typical Weekday
La Jolla Campus: By Shuttle: Percentage of Total Commuters

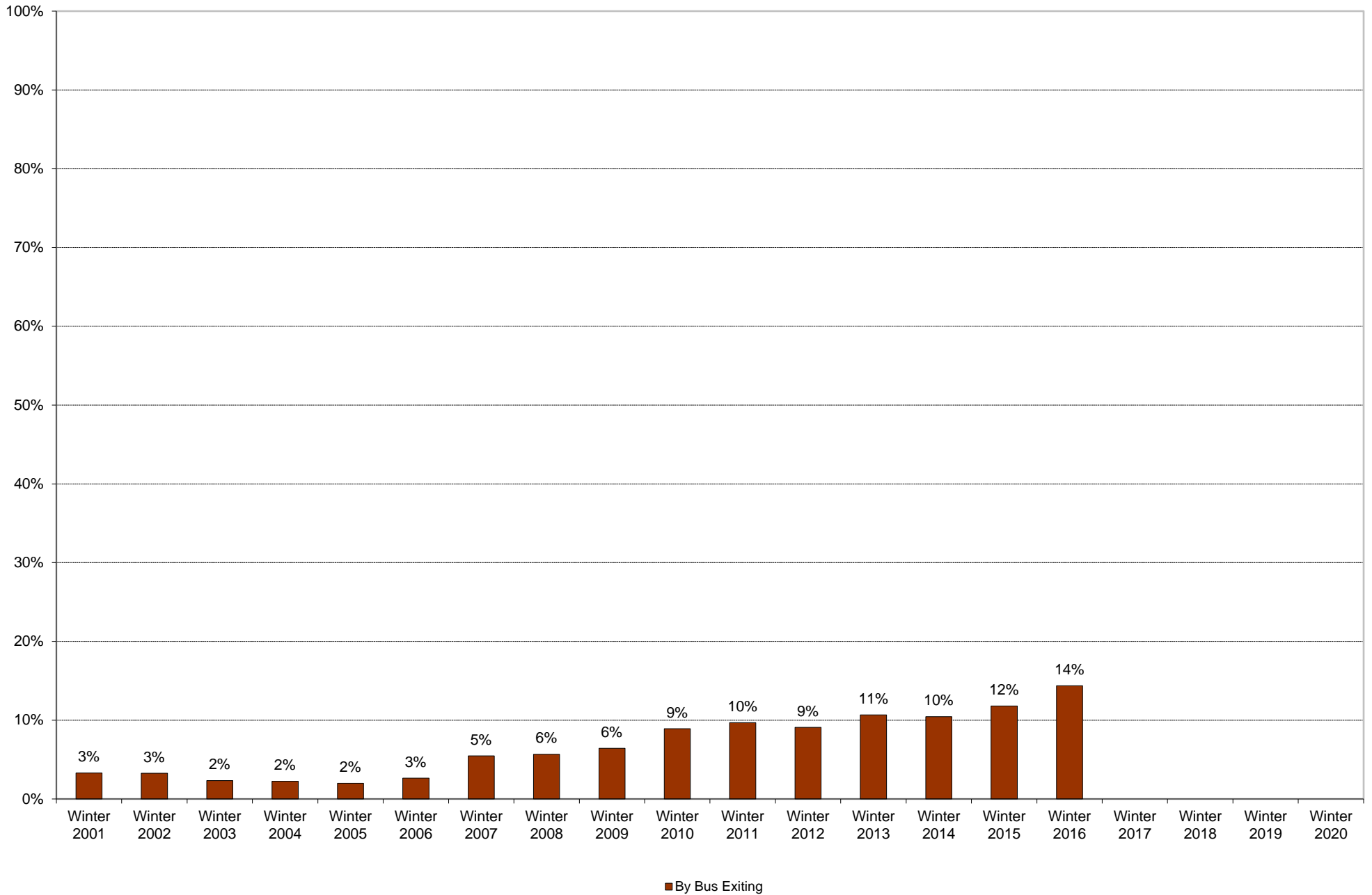


University of California, San Diego Survey of Pedestrian and Vehicular Traffic
Commuters Exiting on Typical Weekday
La Jolla Campus: By Shuttle: Volumes

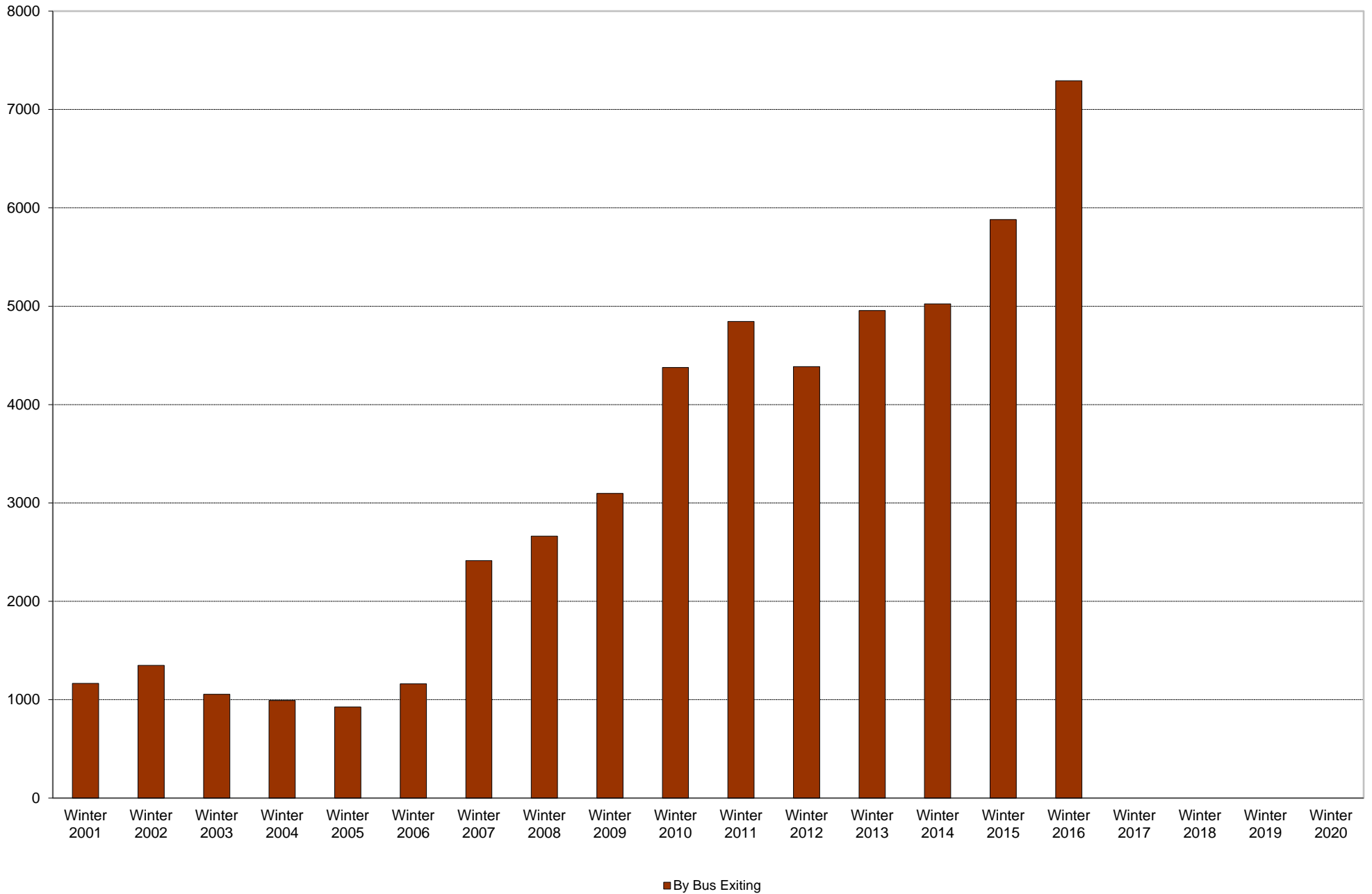


■ By Shuttle Exiting

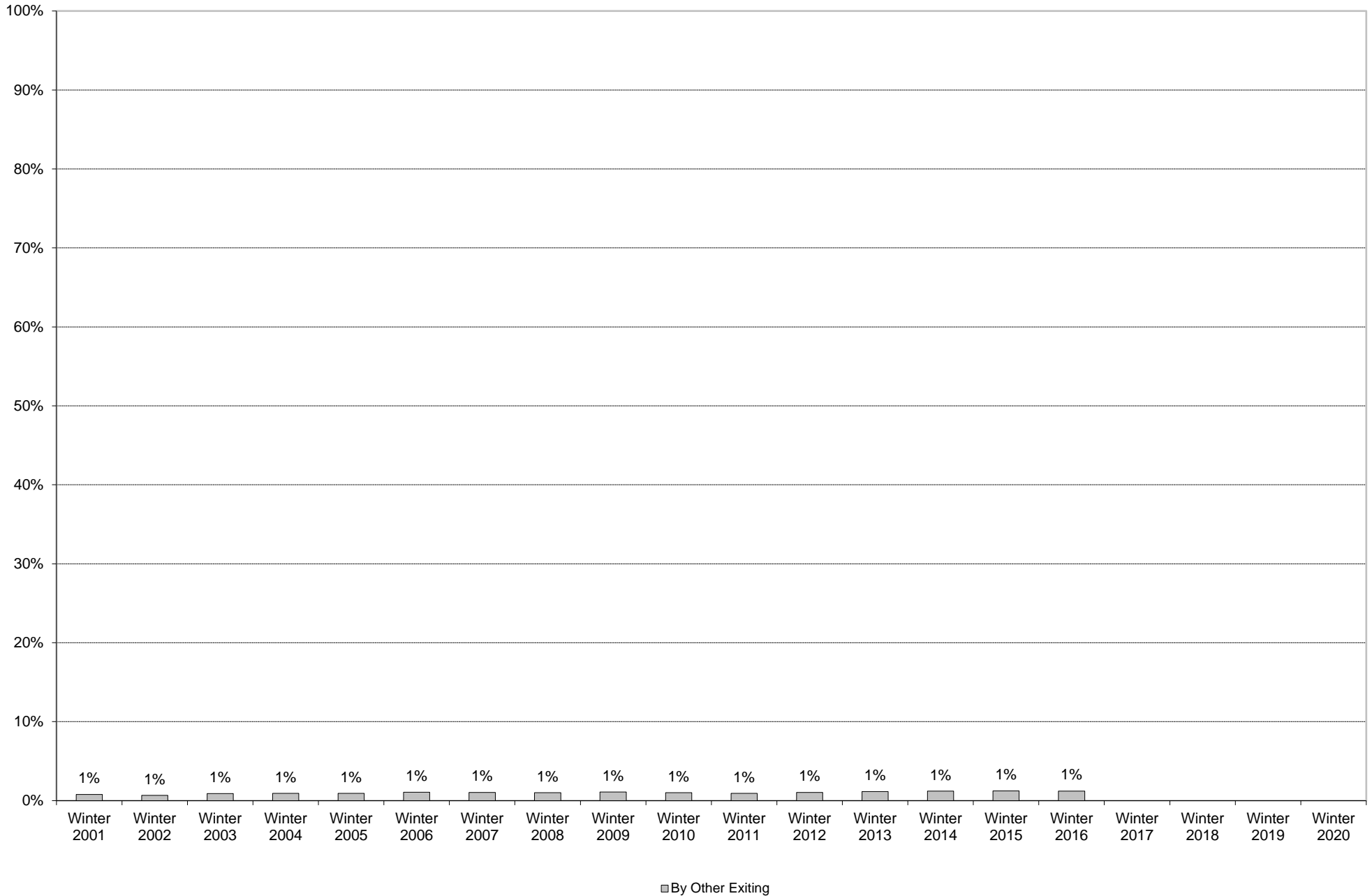
University of California, San Diego Survey of Pedestrian and Vehicular Traffic
Commuters Exiting on Typical Weekday
La Jolla Campus: By Bus: Percentage of Total Commuters



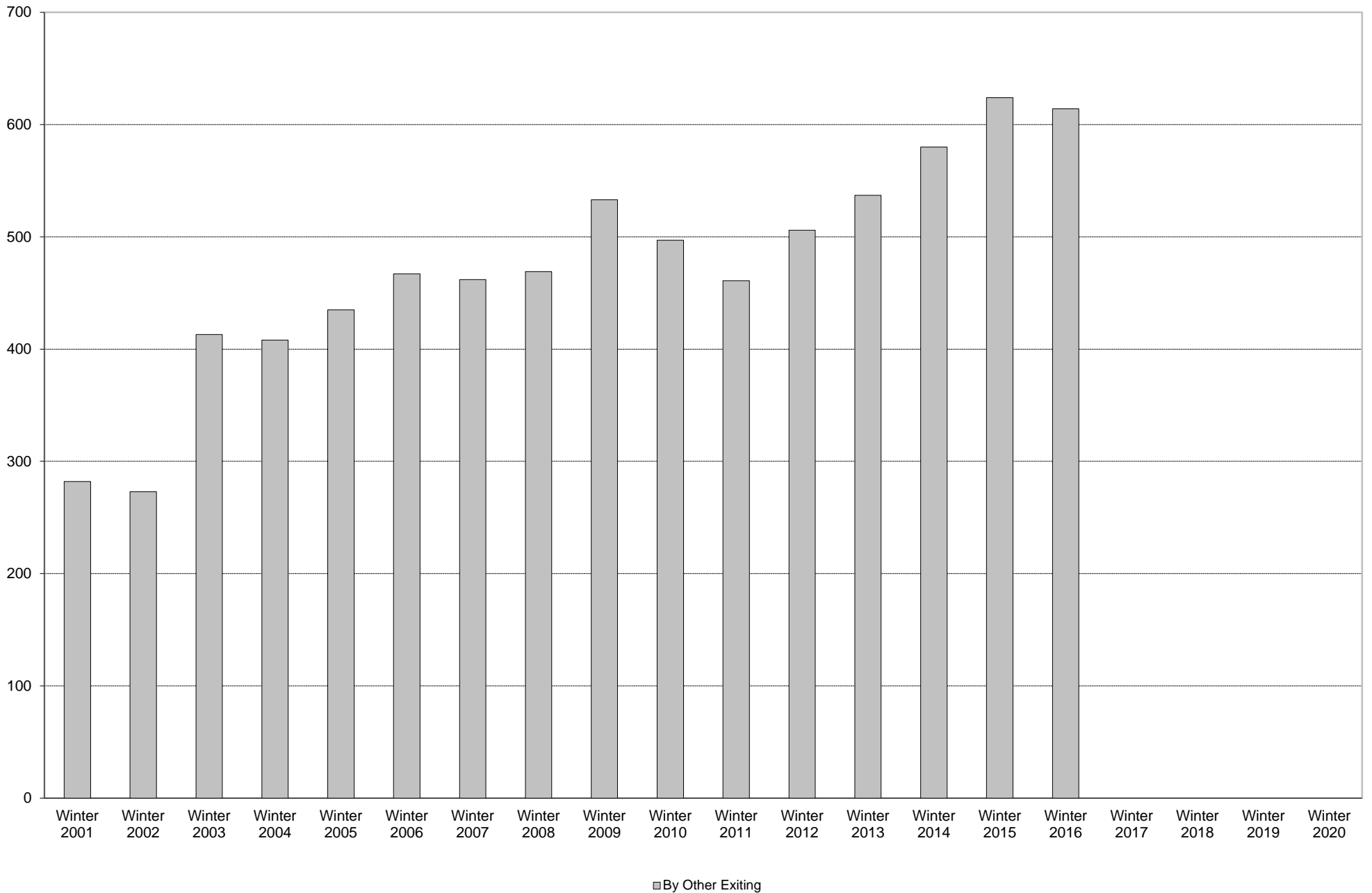
University of California, San Diego Survey of Pedestrian and Vehicular Traffic
Commuters Exiting on Typical Weekday
La Jolla Campus: By Bus: Volumes



University of California, San Diego Survey of Pedestrian and Vehicular Traffic
Commuters Exiting on Typical Weekday
La Jolla Campus: By Other: Percentage of Total Commuters



University of California, San Diego Survey of Pedestrian and Vehicular Traffic
Commuters Exiting on Typical Weekday
La Jolla Campus: By Other: Volumes

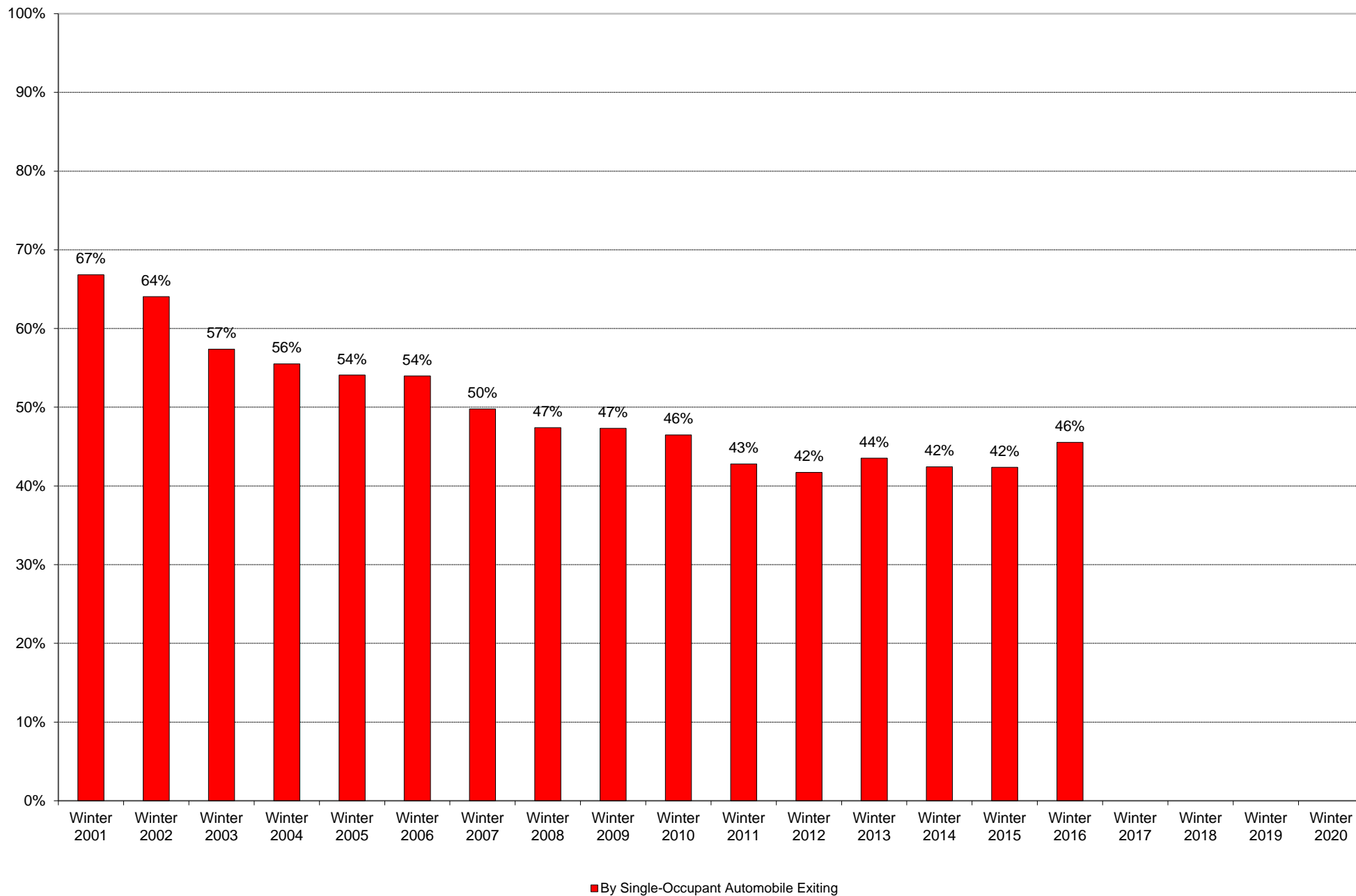


University of California, San Diego Survey of Pedestrian and Vehicular Traffic
Commuters Exiting on Typical Weekday
La Jolla Campus: By Other

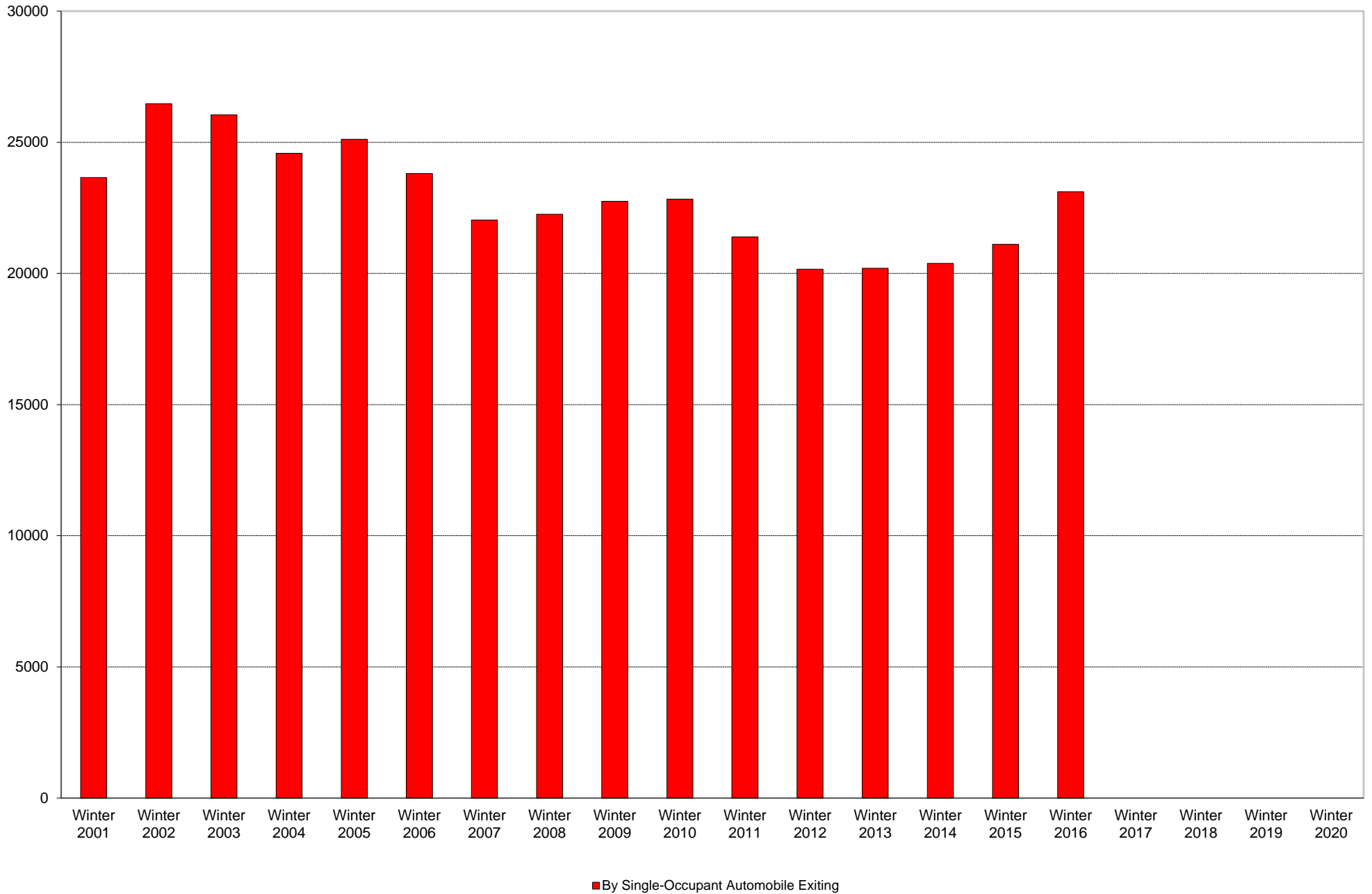
	6am to 7am	7am to 8am	8am to 9am	9am to 10am	10am to 11am	11am to 12pm	12pm to 1pm	1pm to 2pm	2pm to 3pm	3pm to 4pm	4pm to 5pm	5pm to 6pm	6pm to 7pm	7pm to 8pm	8pm to 9pm	9pm to 10pm	Total	Percentage of Total Commuters
Winter 2001	0	1	0	3	0	7	7	4	6	12	211	11	6	2	10	2	282	1%
Winter 2002	1	0	0	2	5	11	15	8	10	14	161	17	14	9	4	2	273	1%
Winter 2003	3	2	2	5	7	10	13	15	19	29	239	20	19	12	11	7	413	1%
Winter 2004	1	1	2	2	7	5	12	17	12	18	255	15	32	15	7	7	408	1%
Winter 2005	0	1	4	2	9	6	8	7	20	24	282	21	27	5	9	10	435	1%
Winter 2006	0	1	2	8	10	10	18	9	18	18	293	21	20	16	12	11	467	1%
Winter 2007	0	0	2	4	10	11	9	8	19	18	308	16	23	11	15	8	462	1%
Winter 2008	1	0	2	4	6	6	7	16	10	20	324	23	21	12	7	10	469	1%
Winter 2009	0	2	7	5	11	9	27	16	14	20	329	26	32	15	13	7	533	1%
Winter 2010	1	4	0	6	15	14	19	10	14	41	284	26	22	15	13	13	497	1%
Winter 2011	0	1	2	4	8	9	6	9	17	43	276	27	29	14	10	6	461	1%
Winter 2012	4	1	6	13	17	11	21	19	17	39	268	28	26	18	9	9	506	1%
Winter 2013	0	0	2	5	4	13	57	8	13	57	290	33	26	13	9	7	537	1%
Winter 2014	1	1	5	6	7	9	60	13	14	65	301	31	28	16	11	12	580	1%
Winter 2015	1	4	4	12	8	13	58	17	17	64	304	34	35	24	16	13	624	1%
Winter 2016	1	0	6	5	8	17	70	14	23	71	291	29	22	29	13	15	614	1%
Winter 2017																		
Winter 2018																		
Winter 2019																		
Winter 2020																		

Includes motorcycle and vanpool.

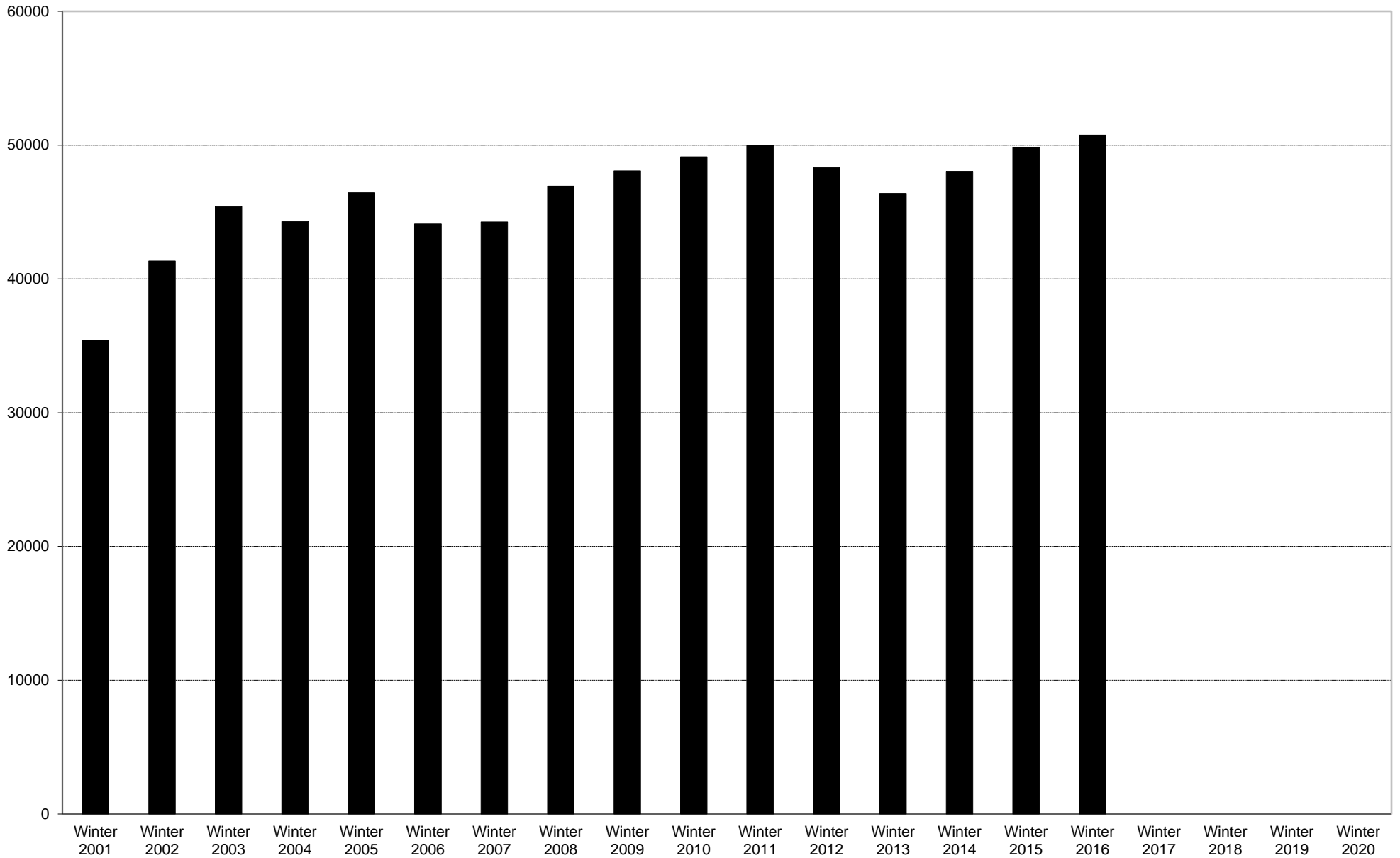
University of California, San Diego Survey of Pedestrian and Vehicular Traffic
Commuters Exiting on Typical Weekday
La Jolla Campus: By Single-Occupant Automobile: Percentage of Total Commuters



University of California, San Diego Survey of Pedestrian and Vehicular Traffic
Commuters Exiting on Typical Weekday
La Jolla Campus: By Single-Occupant Automobile: Volumes



University of California, San Diego Survey of Pedestrian and Vehicular Traffic
Commuters Exiting on Typical Weekday
La Jolla Campus: Total Commuters: Volumes



■ Total Commuters Exiting

