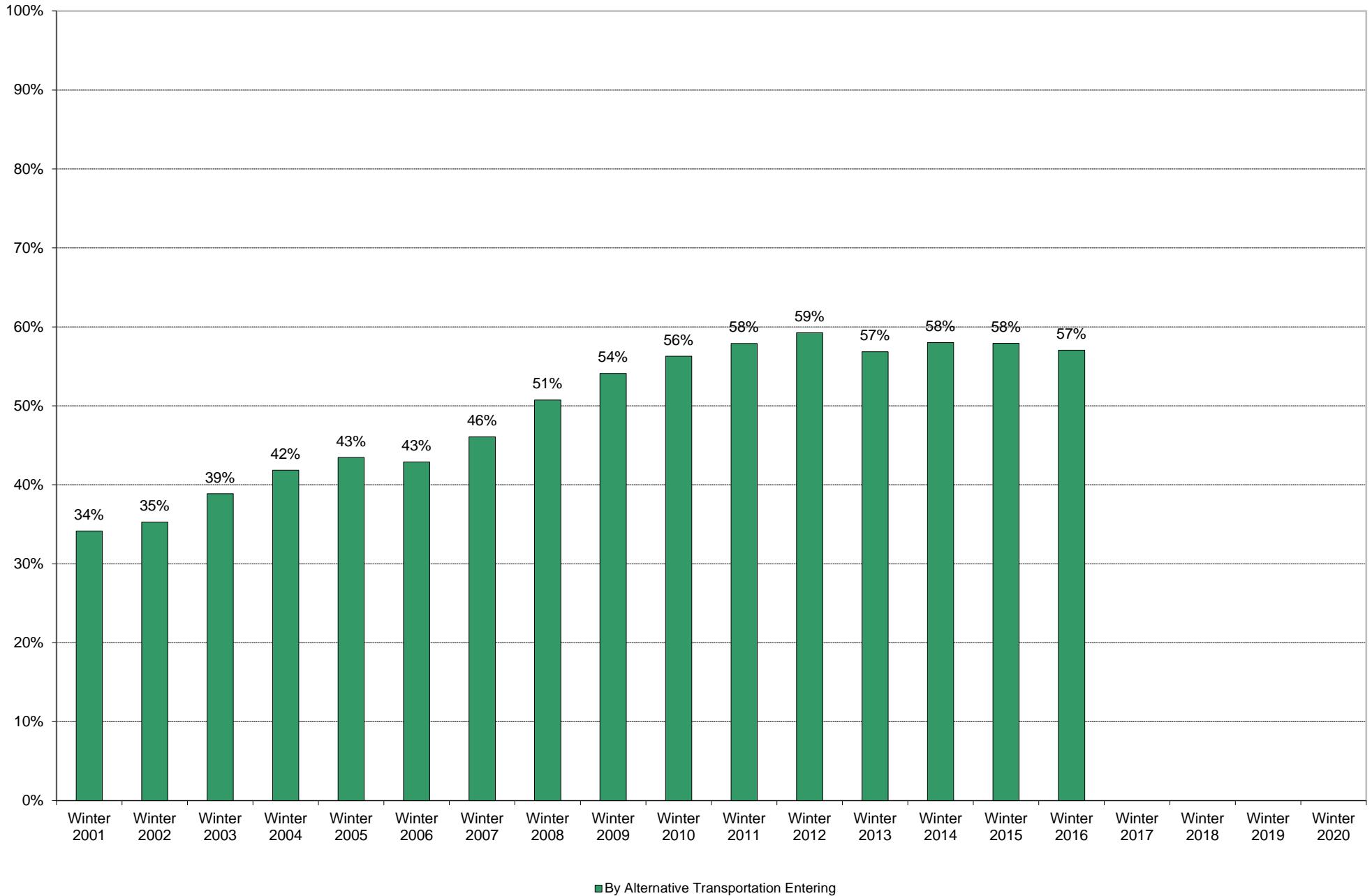
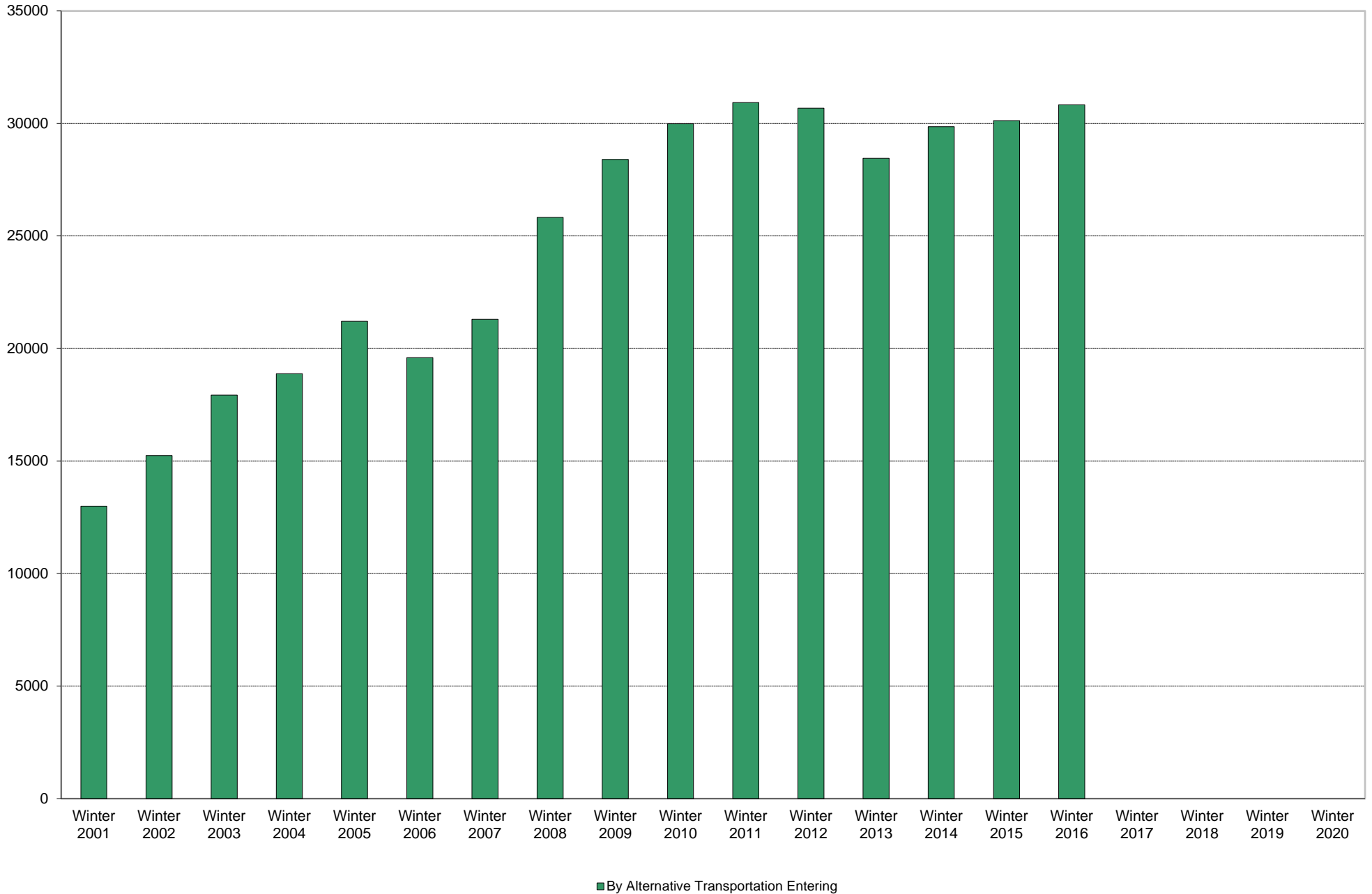


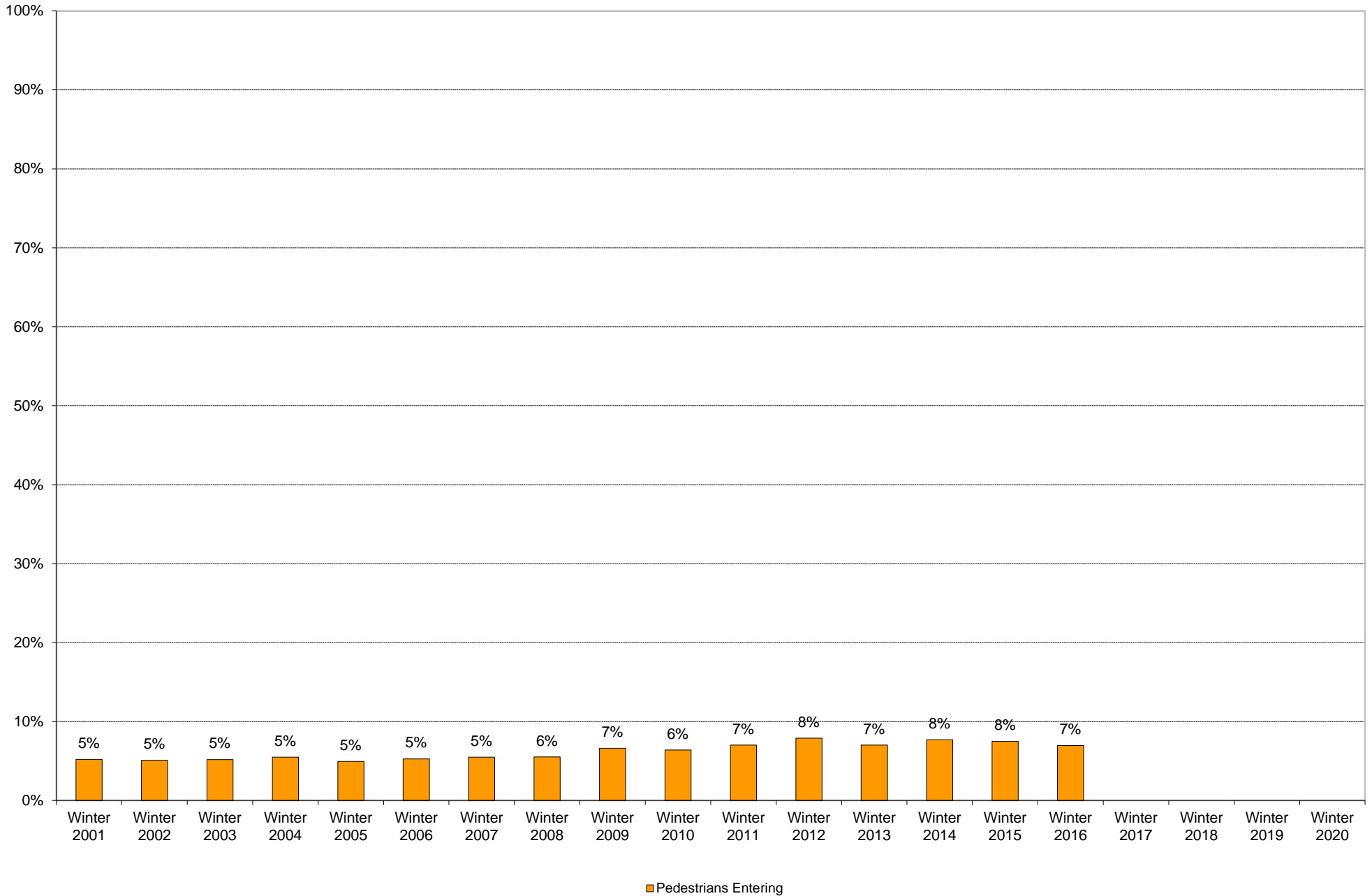
University of California, San Diego Survey of Pedestrian and Vehicular Traffic
Commuters Entering on Typical Weekday
La Jolla Campus: By Alternative Transportation: Percentage of Total Commuters



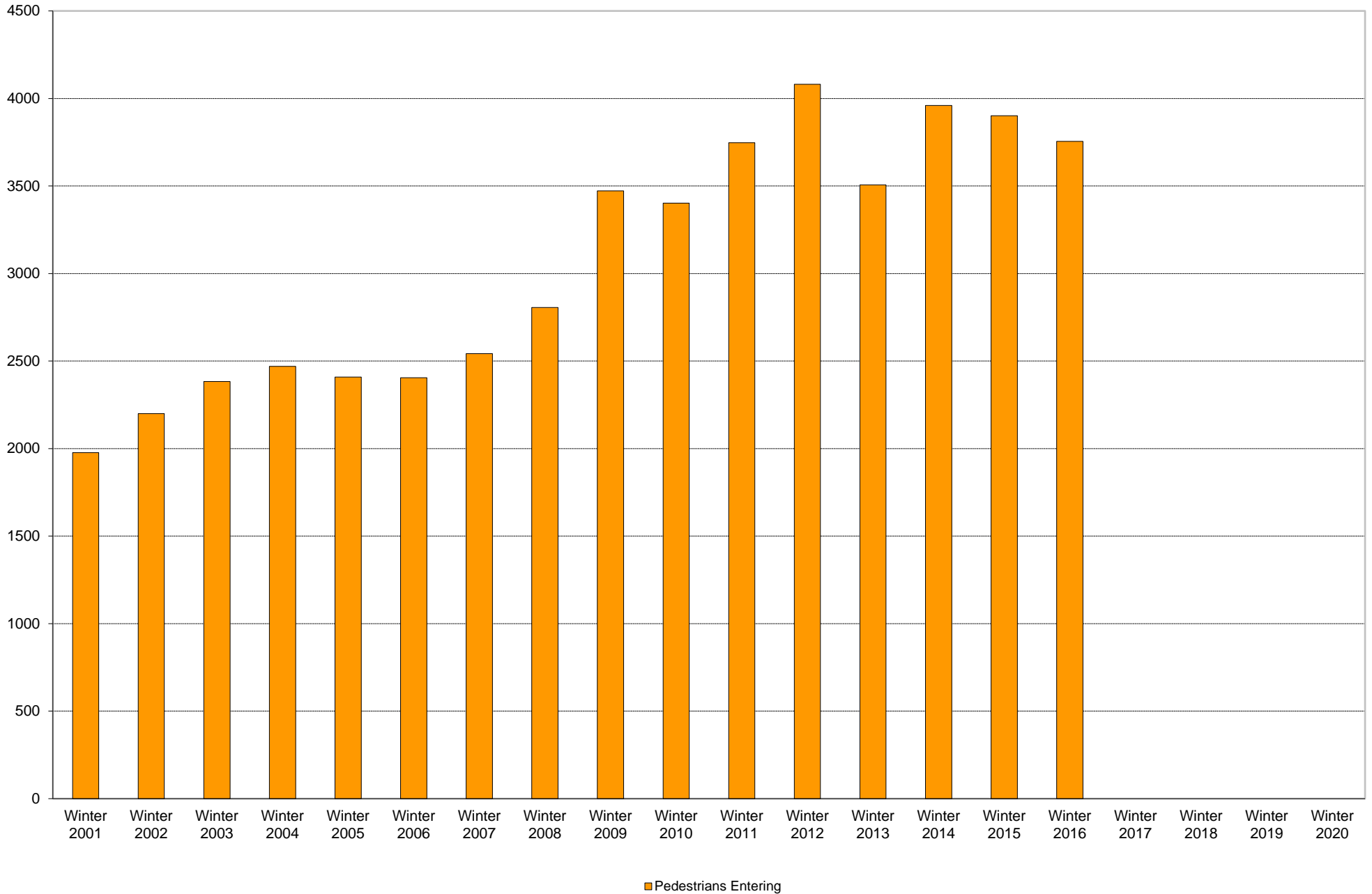
University of California, San Diego Survey of Pedestrian and Vehicular Traffic
Commuters Entering on Typical Weekday
La Jolla Campus: By Alternative Transportation: Volumes



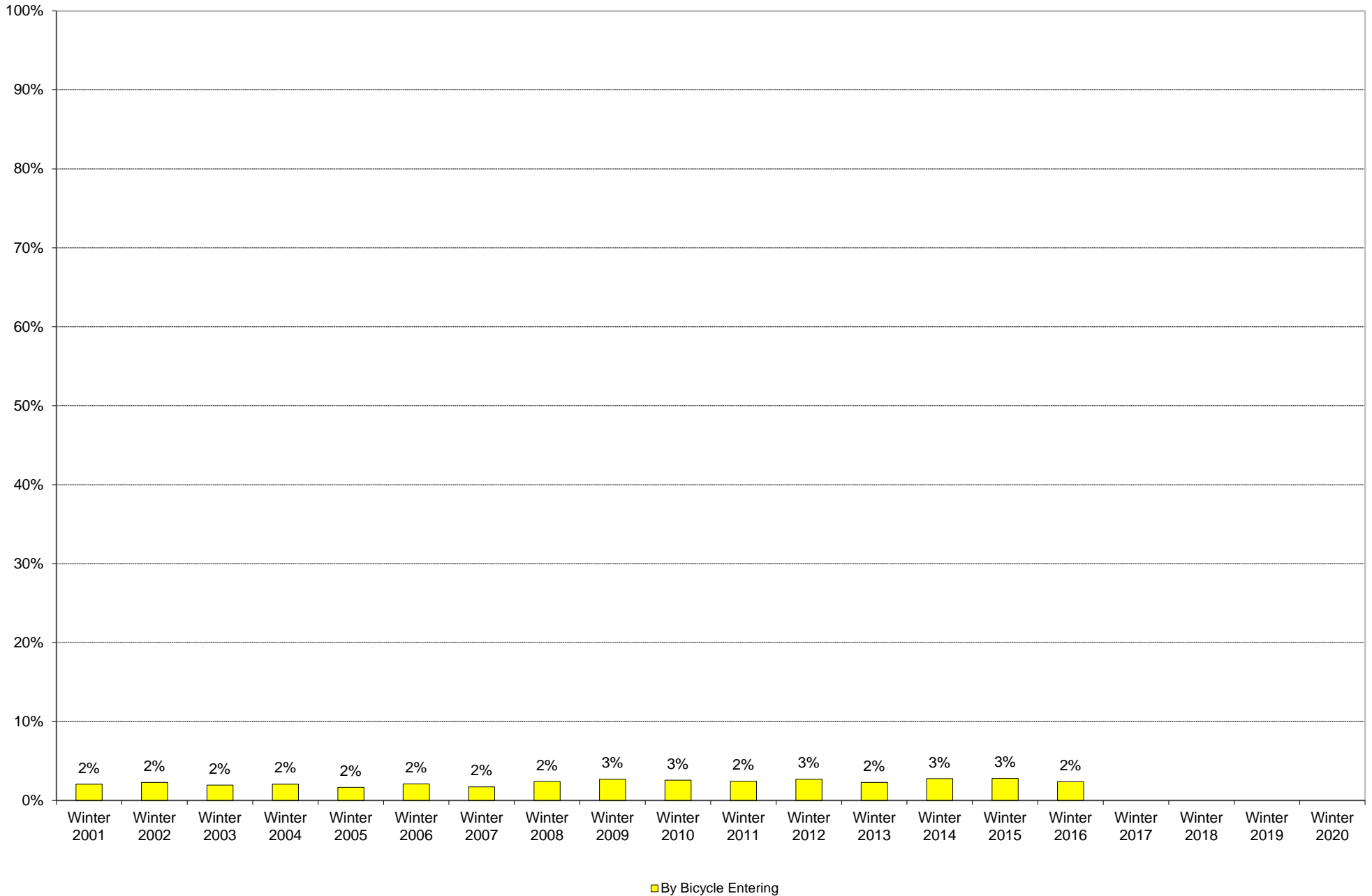
University of California, San Diego Survey of Pedestrian and Vehicular Traffic
Commuters Entering on Typical Weekday
La Jolla Campus: Pedestrians: Percentage of Total Commuters



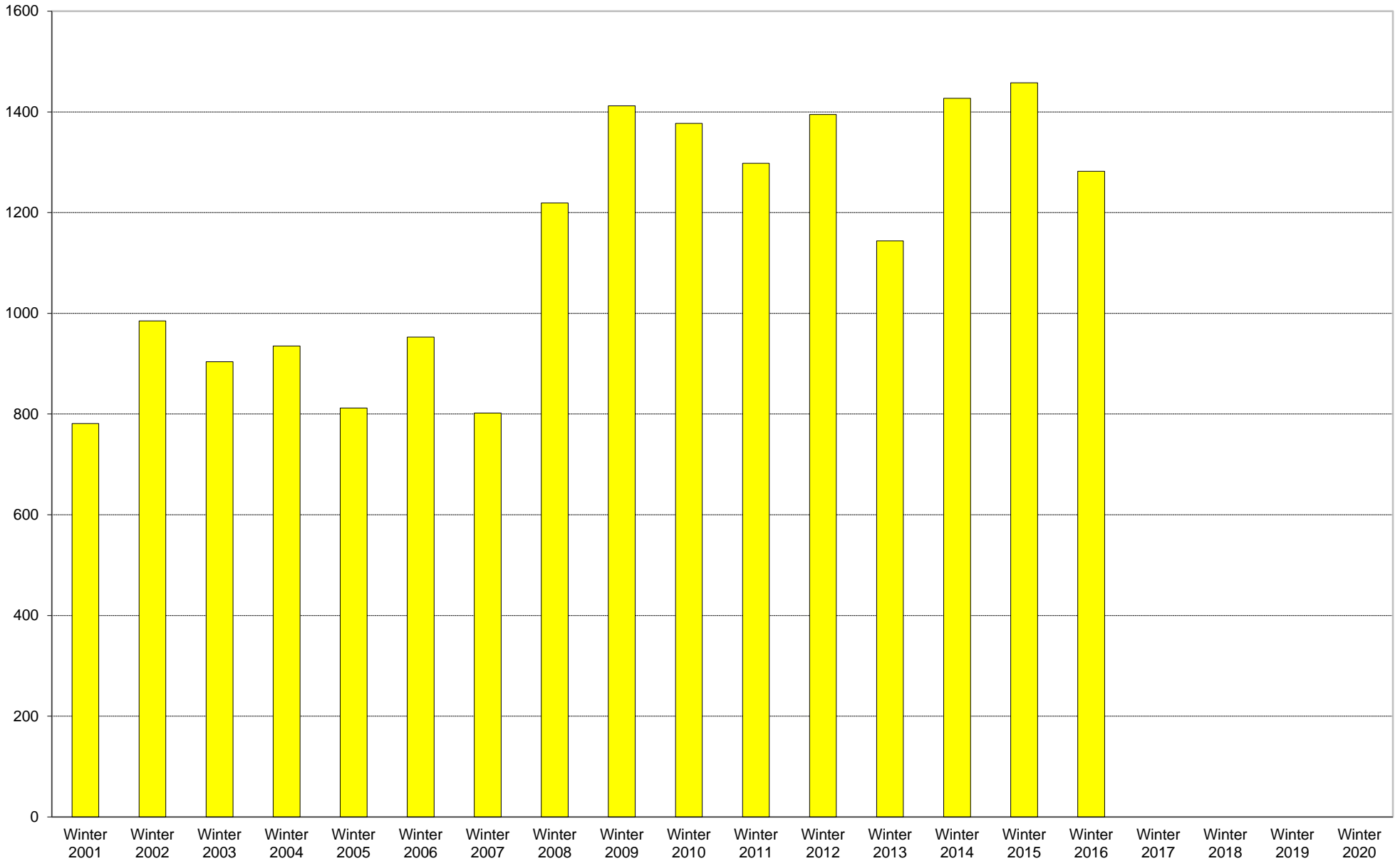
University of California, San Diego Survey of Pedestrian and Vehicular Traffic
Commuters Entering on Typical Weekday
La Jolla Campus: Pedestrians: Volumes



University of California, San Diego Survey of Pedestrian and Vehicular Traffic
Commuters Entering on Typical Weekday
La Jolla Campus: By Bicycle: Percentage of Total Commuters

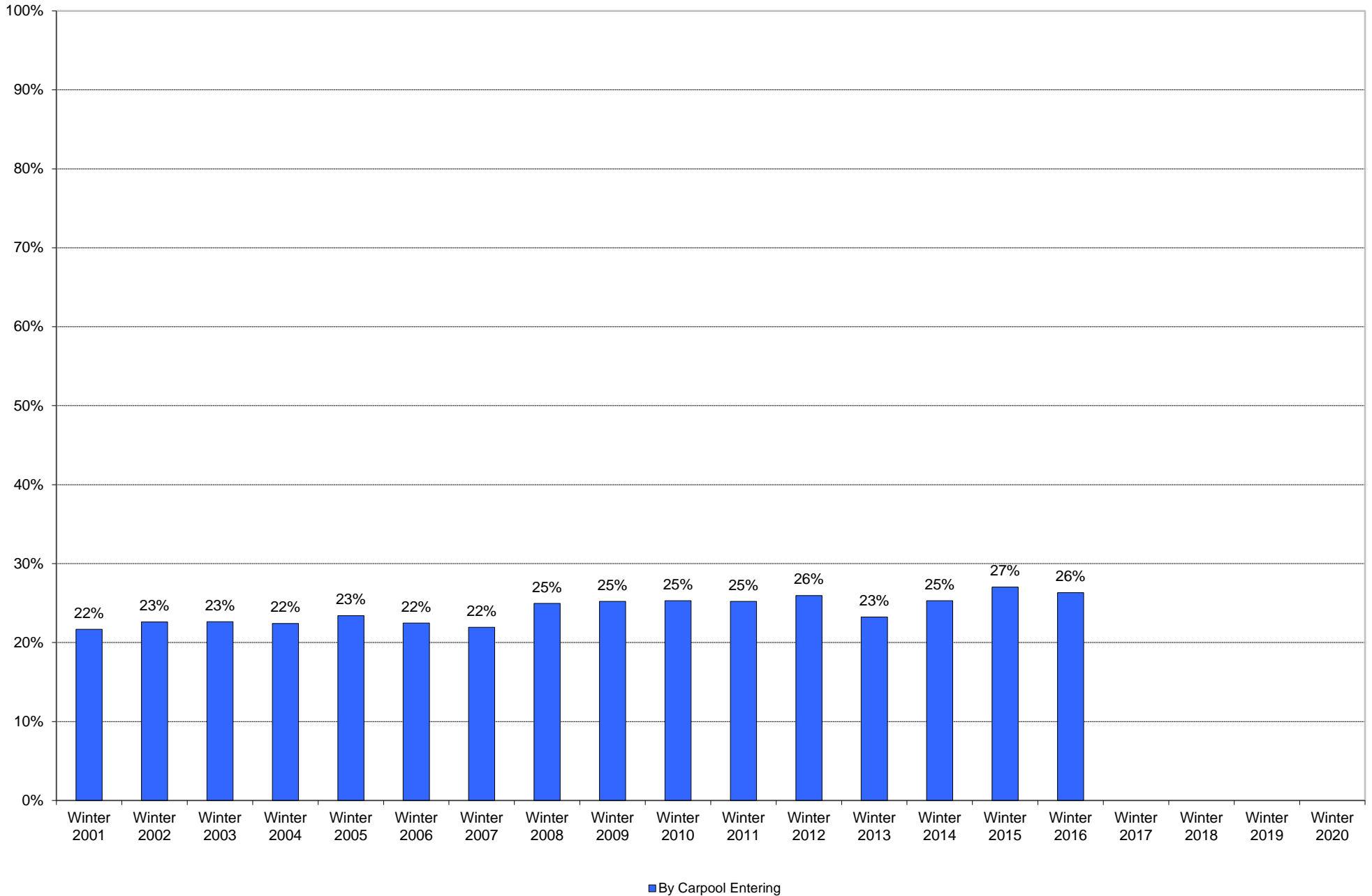


University of California, San Diego Survey of Pedestrian and Vehicular Traffic
Commuters Entering on Typical Weekday
La Jolla Campus: By Bicycle: Volumes

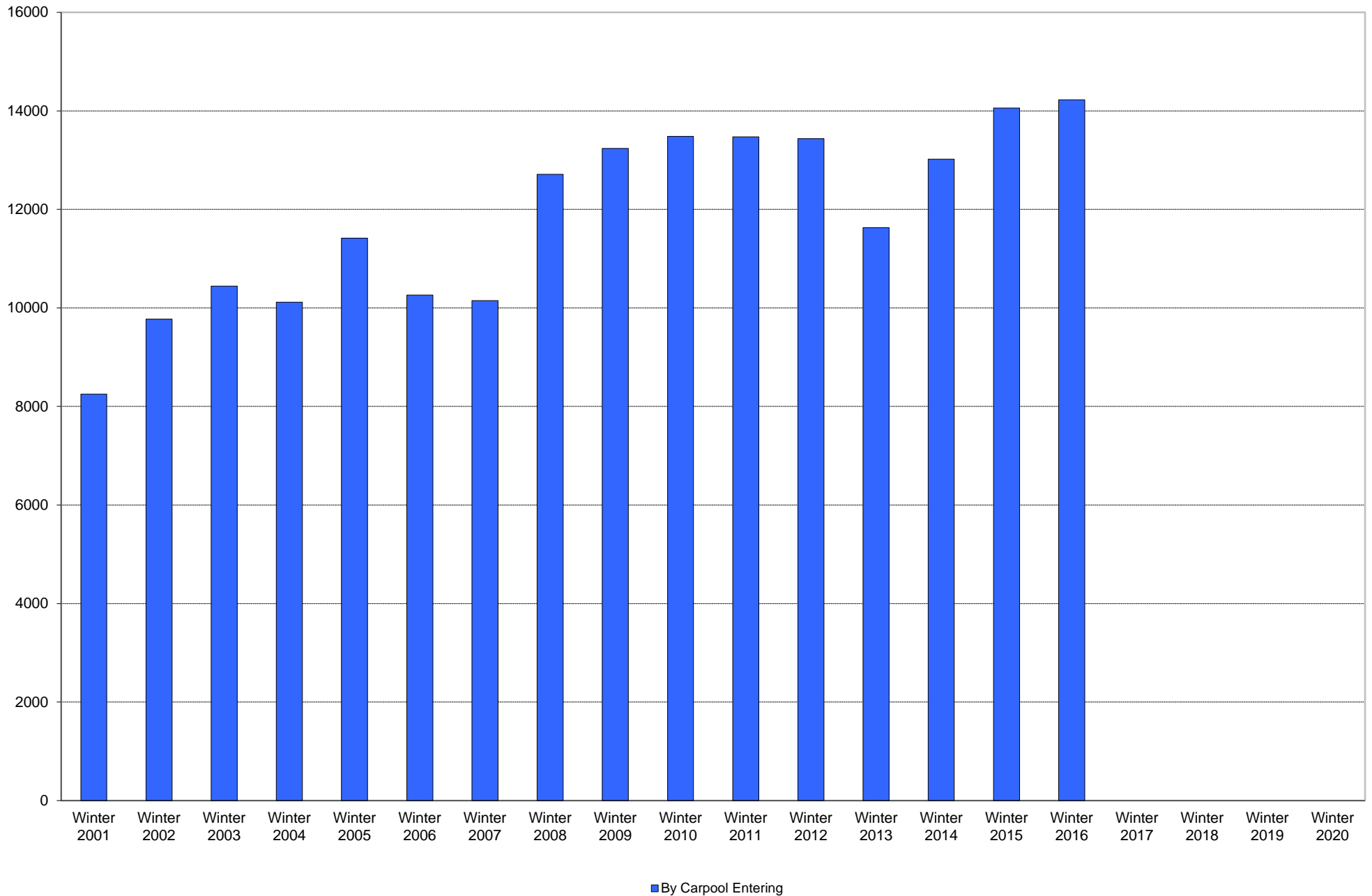


■ By Bicycle Entering

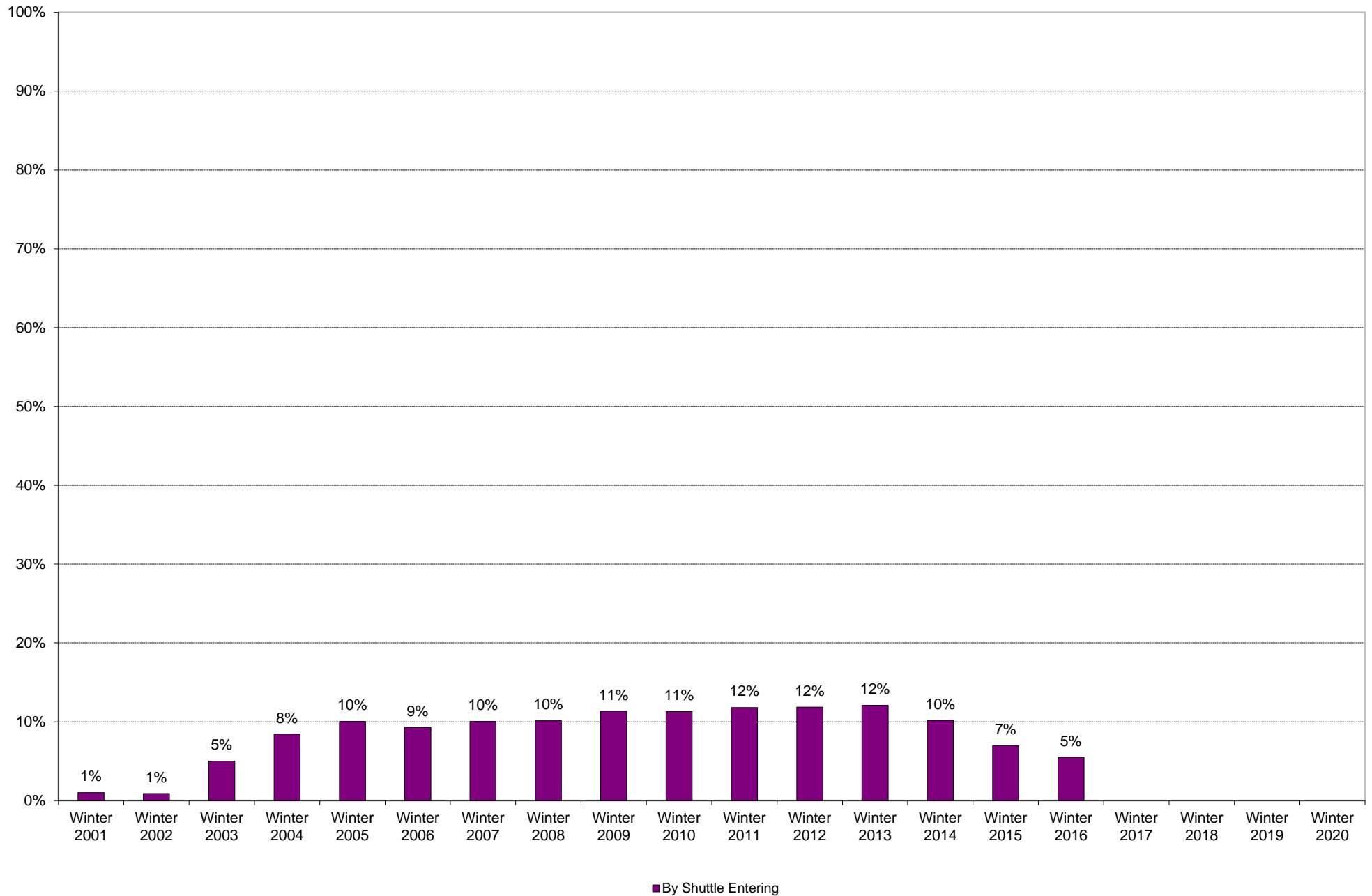
University of California, San Diego Survey of Pedestrian and Vehicular Traffic
Commuters Entering on Typical Weekday
La Jolla Campus: By Carpool: Percentage of Total Commuters



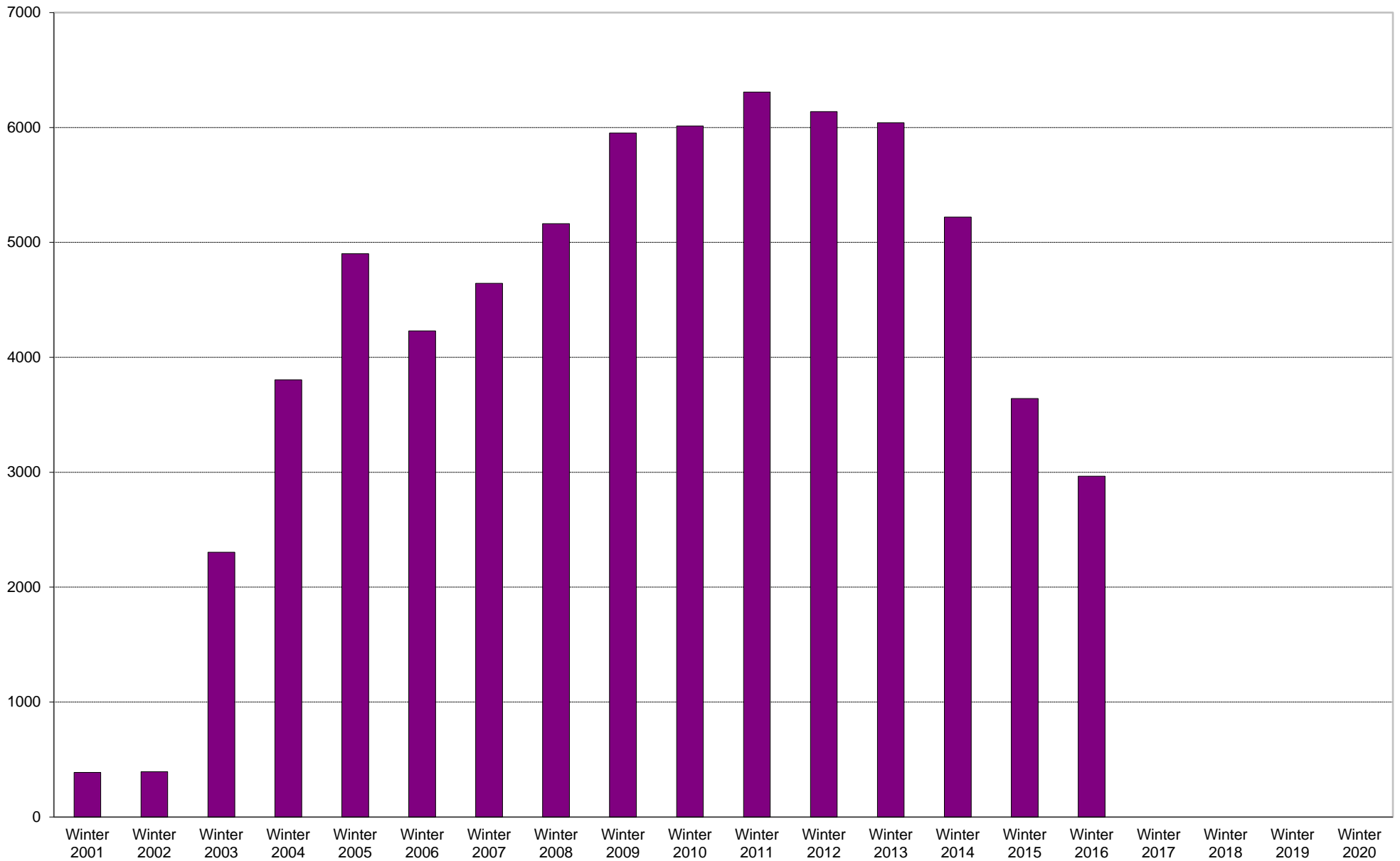
University of California, San Diego Survey of Pedestrian and Vehicular Traffic
Commuters Entering on Typical Weekday
La Jolla Campus: By Carpool: Volumes



University of California, San Diego Survey of Pedestrian and Vehicular Traffic
Commuters Entering on Typical Weekday
La Jolla Campus: By Shuttle: Percentage of Total Commuters

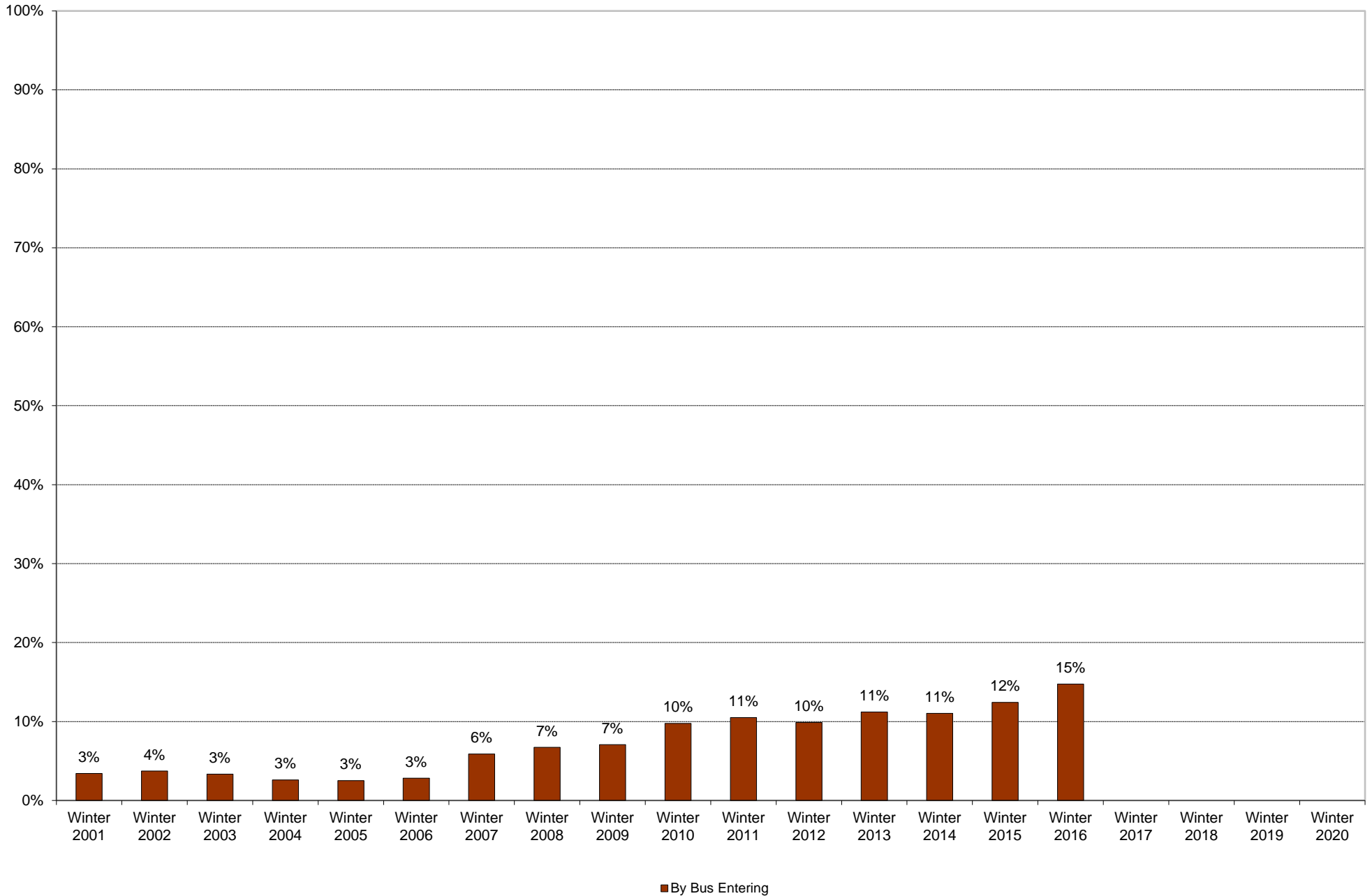


University of California, San Diego Survey of Pedestrian and Vehicular Traffic
Commuters Entering on Typical Weekday
La Jolla Campus: By Shuttle: Volumes

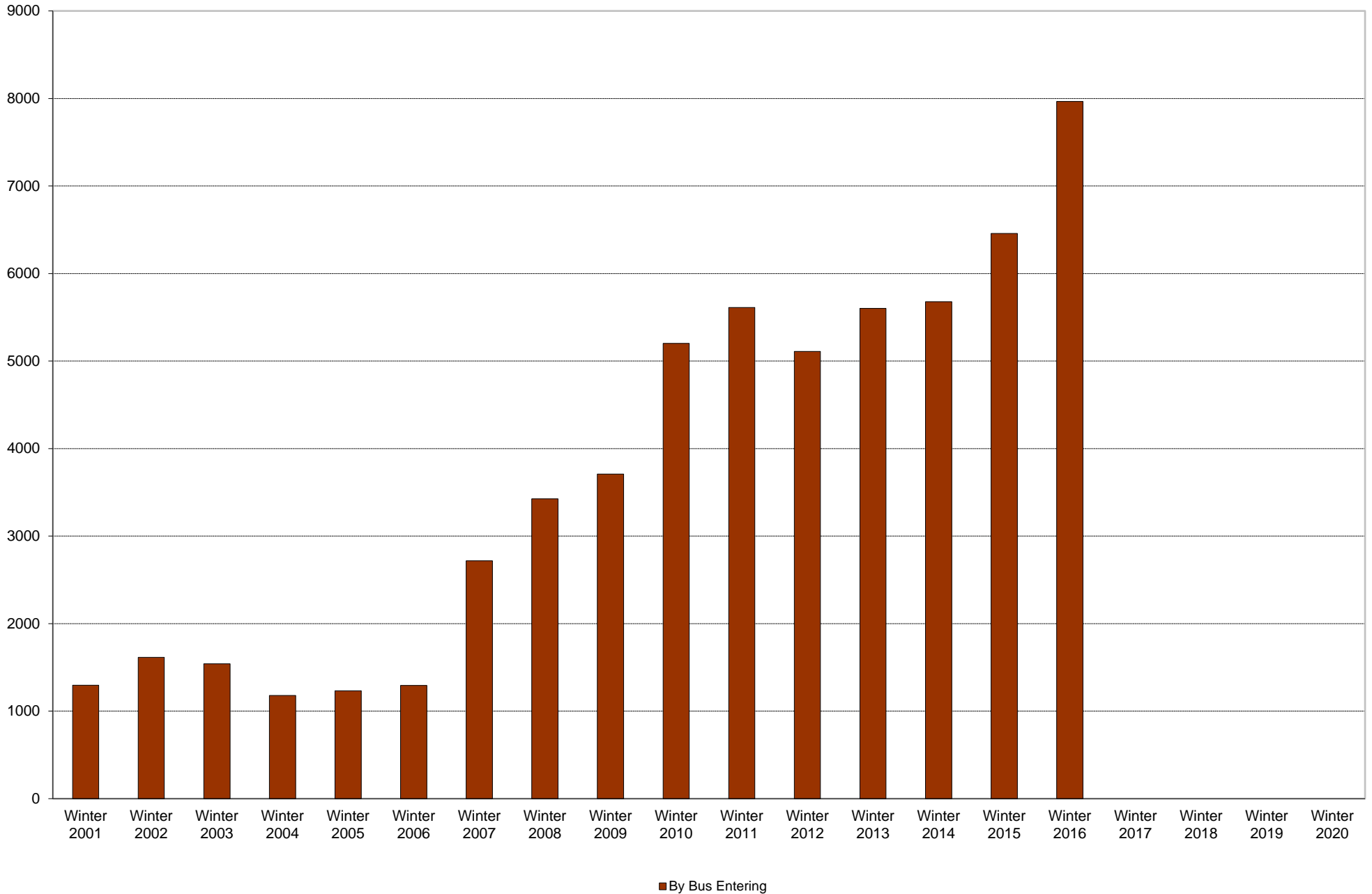


■ By Shuttle Entering

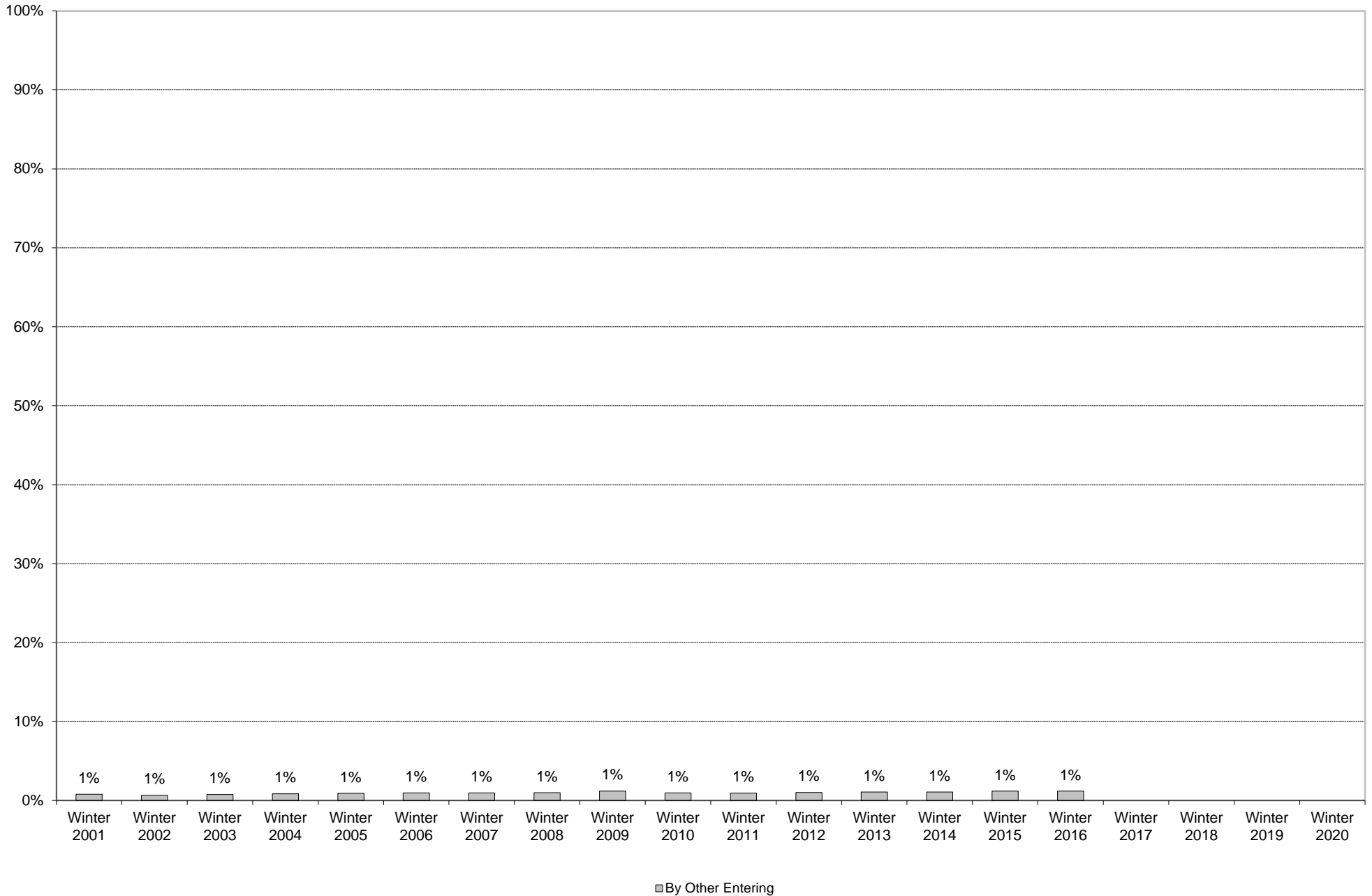
University of California, San Diego Survey of Pedestrian and Vehicular Traffic
Commuters Entering on Typical Weekday
La Jolla Campus: By Bus: Percentage of Total Commuters



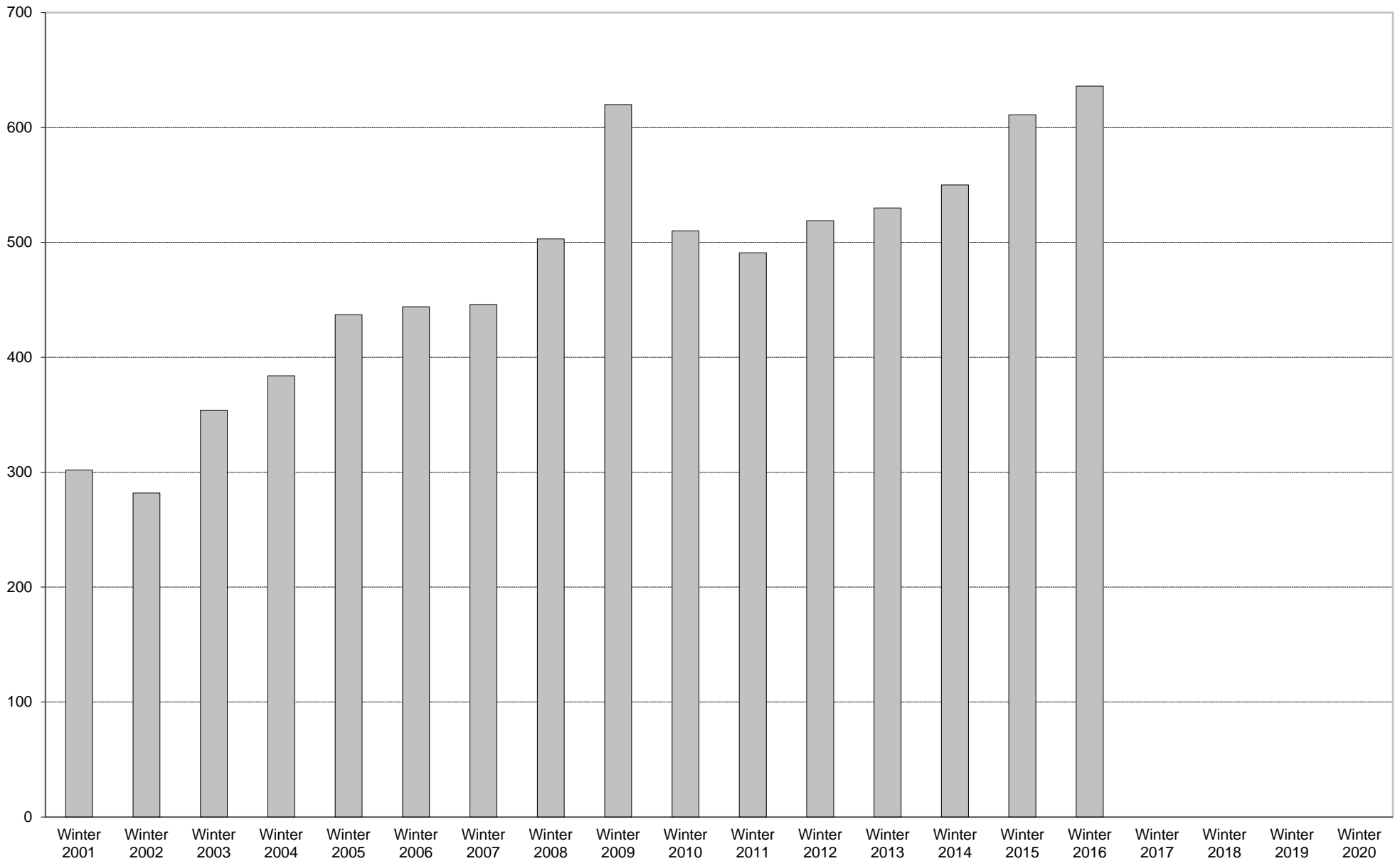
University of California, San Diego Survey of Pedestrian and Vehicular Traffic
Commuters Entering on Typical Weekday
La Jolla Campus: By Bus: Volumes



University of California, San Diego Survey of Pedestrian and Vehicular Traffic
Commuters Entering on Typical Weekday
La Jolla Campus: By Other: Percentage of Total Commuters



University of California, San Diego Survey of Pedestrian and Vehicular Traffic
Commuters Entering on Typical Weekday
La Jolla Campus: By Other: Volumes



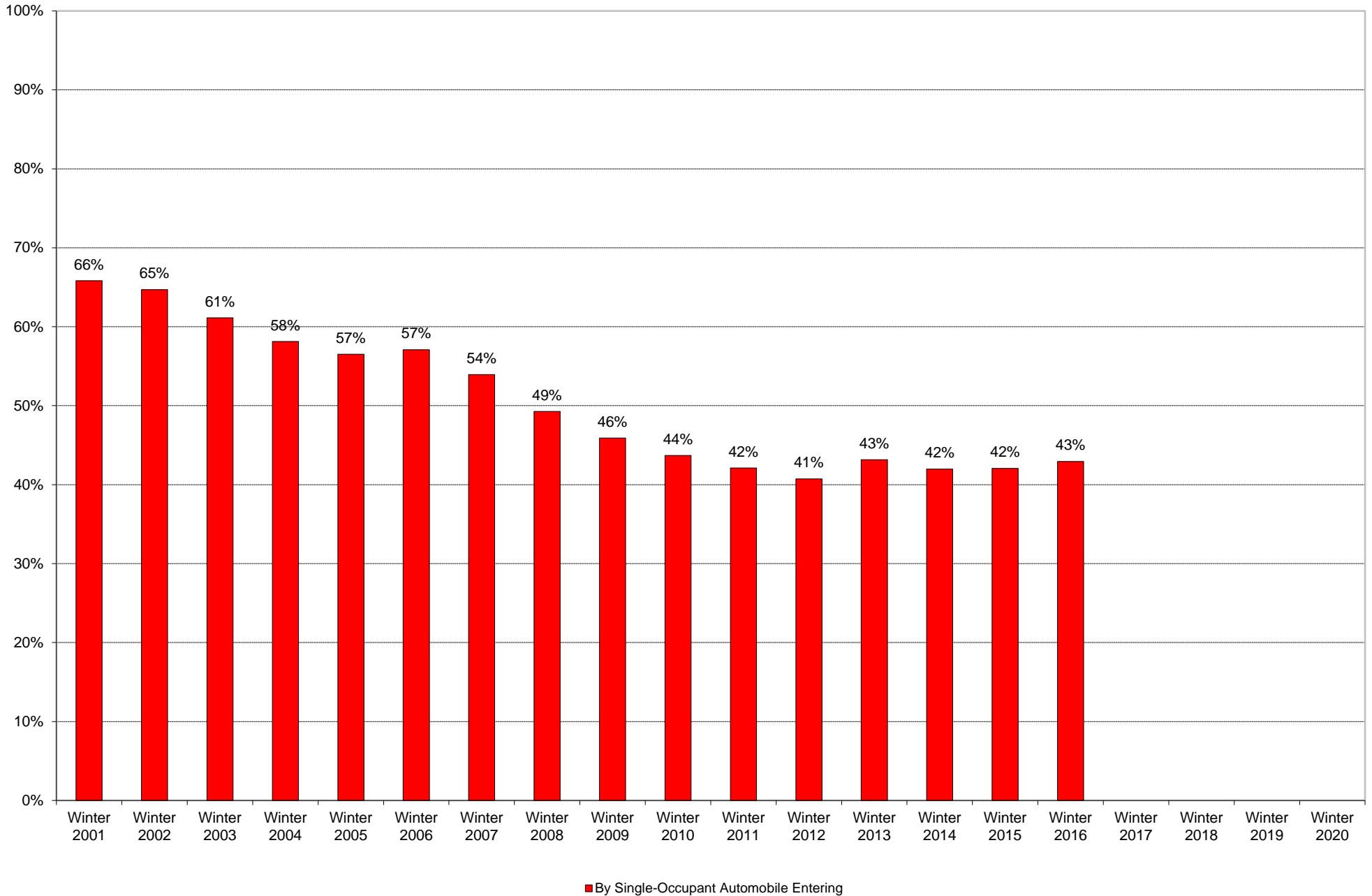
■ By Other Entering

University of California, San Diego Survey of Pedestrian and Vehicular Traffic
 Commuters Entering on Typical Weekday
 La Jolla Campus: By Other

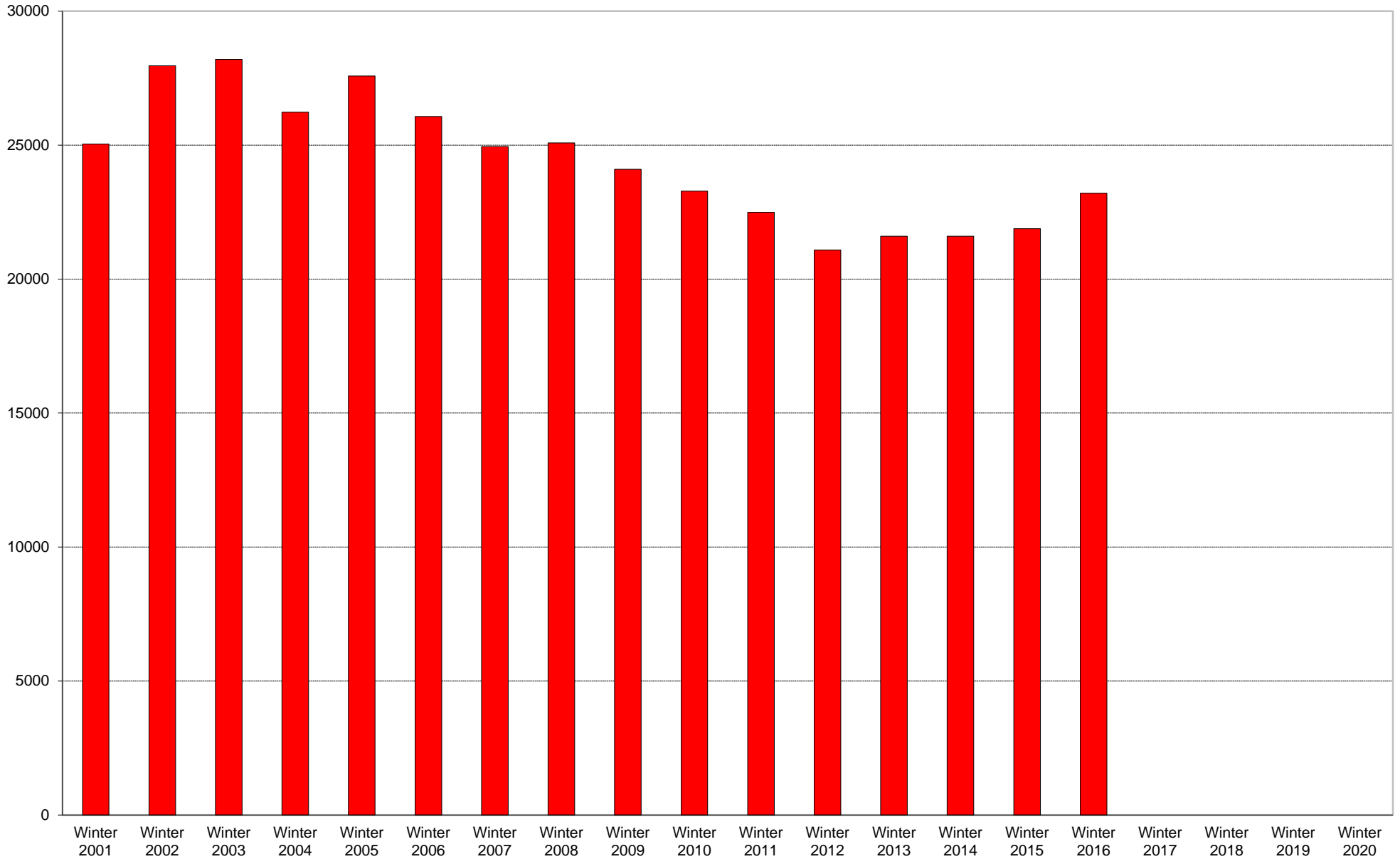
	6am to 7am	7am to 8am	8am to 9am	9am to 10am	10am to 11am	11am to 12pm	12pm to 1pm	1pm to 2pm	2pm to 3pm	3pm to 4pm	4pm to 5pm	5pm to 6pm	6pm to 7pm	7pm to 8pm	8pm to 9pm	9pm to 10pm	Total	Percentage of Total Commuters
Winter 2001	3	211	10	13	15	9	14	3	4	7	3	3	3	2	2	0	302	1%
Winter 2002	8	163	14	23	8	14	11	9	8	8	8	3	5	0	0	0	282	1%
Winter 2003	8	231	13	22	15	9	10	18	7	6	4	3	5	3	0	0	354	1%
Winter 2004	1	249	16	24	23	5	14	10	4	4	10	8	7	4	2	3	384	1%
Winter 2005	11	283	19	22	14	9	9	21	11	15	9	5	3	3	3	0	437	1%
Winter 2006	4	279	18	27	16	15	17	16	10	11	6	8	11	5	1	0	444	1%
Winter 2007	6	295	15	26	15	18	10	10	7	7	9	6	14	1	4	3	446	1%
Winter 2008	13	299	24	38	32	22	10	15	7	15	6	10	5	4	2	1	503	1%
Winter 2009	11	336	46	46	31	28	35	18	10	21	11	11	5	5	4	2	620	1%
Winter 2010	27	285	32	46	33	11	14	10	7	14	7	6	11	3	3	1	510	1%
Winter 2011	30	263	32	31	30	13	22	17	8	13	11	3	12	1	3	2	491	1%
Winter 2012	33	260	23	45	26	18	21	18	20	16	13	11	9	2	3	1	519	1%
Winter 2013	41	291	35	37	24	16	20	17	11	7	6	8	5	5	6	1	530	1%
Winter 2014	46	296	30	40	28	14	19	21	10	11	12	4	10	4	3	2	550	1%
Winter 2015	58	296	37	55	39	16	22	20	11	18	14	5	10	7	2	1	611	1%
Winter 2016	66	290	40	46	32	23	20	26	15	9	19	15	19	7	7	2	636	1%
Winter 2017																		
Winter 2018																		
Winter 2019																		
Winter 2020																		

Includes motorcycle and vanpool.

University of California, San Diego Survey of Pedestrian and Vehicular Traffic
Commuters Entering on Typical Weekday
La Jolla Campus: By Single-Occupant Automobile: Percentage of Total Commuters

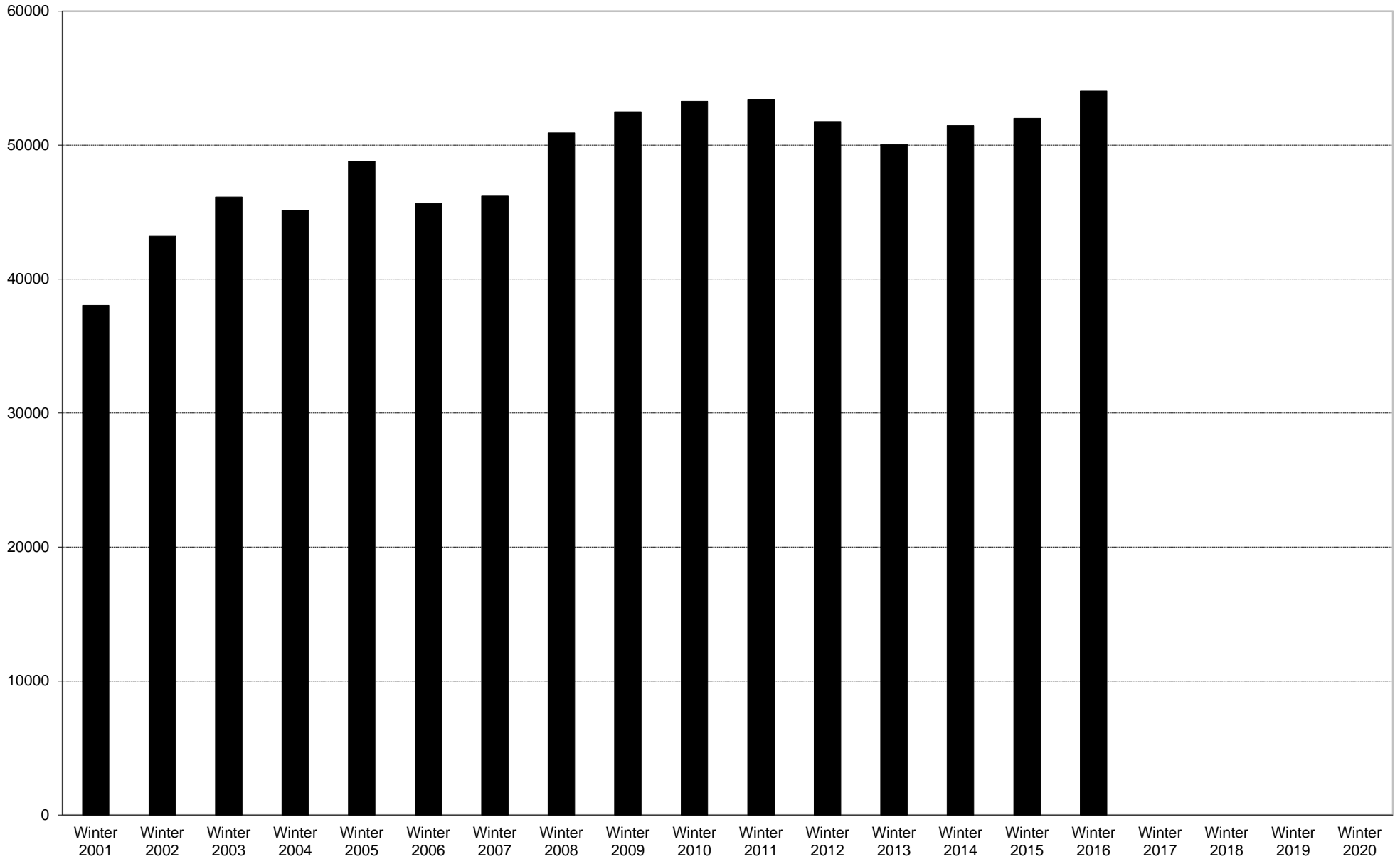


University of California, San Diego Survey of Pedestrian and Vehicular Traffic
Commuters Entering on Typical Weekday
La Jolla Campus: By Single-Occupant Automobile: Volumes



■ By Single-Occupant Automobile Entering

University of California, San Diego Survey of Pedestrian and Vehicular Traffic
Commuters Entering on Typical Weekday
La Jolla Campus: Total Commuters: Volumes



■ Total Commuters Entering

