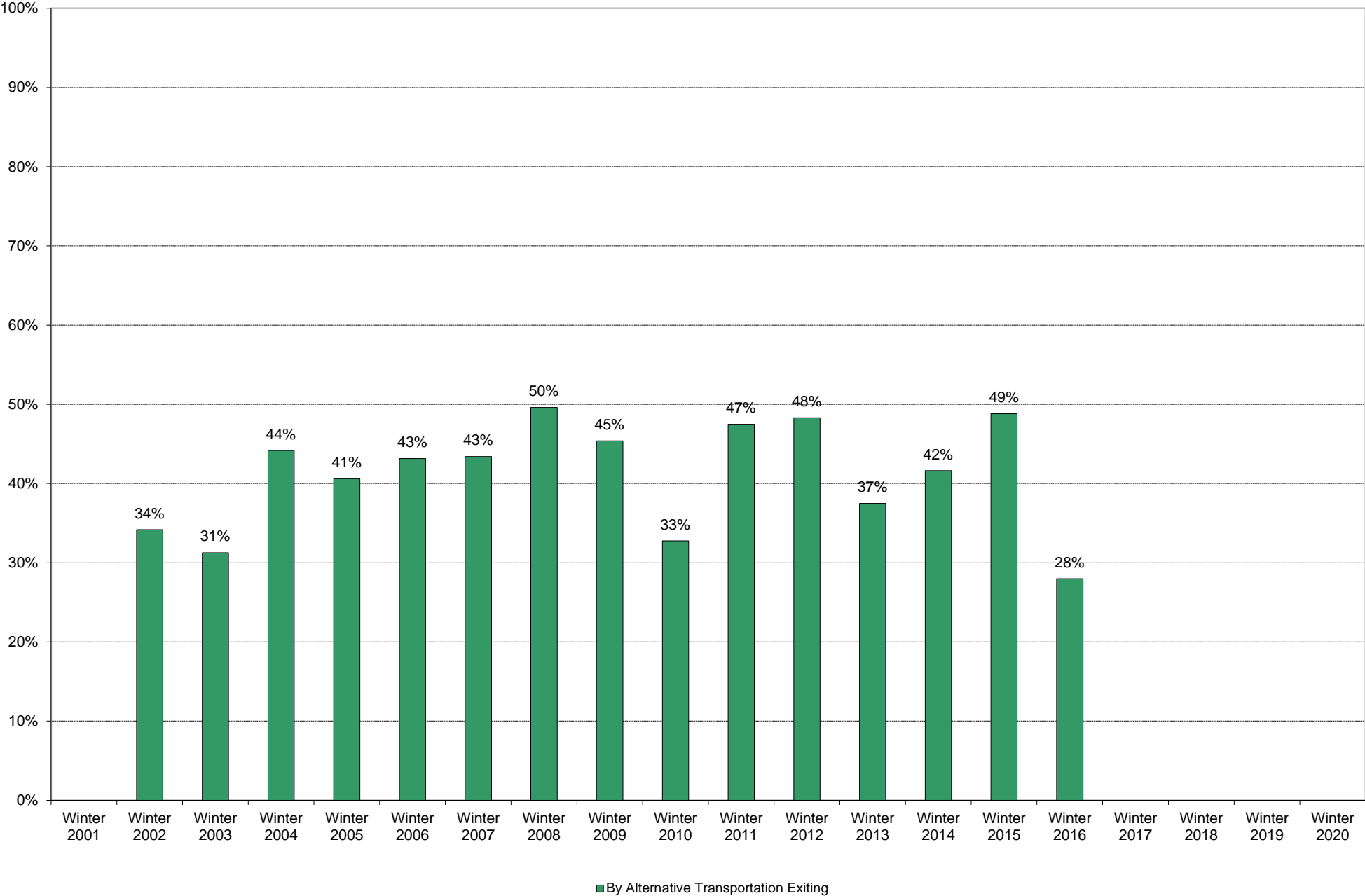
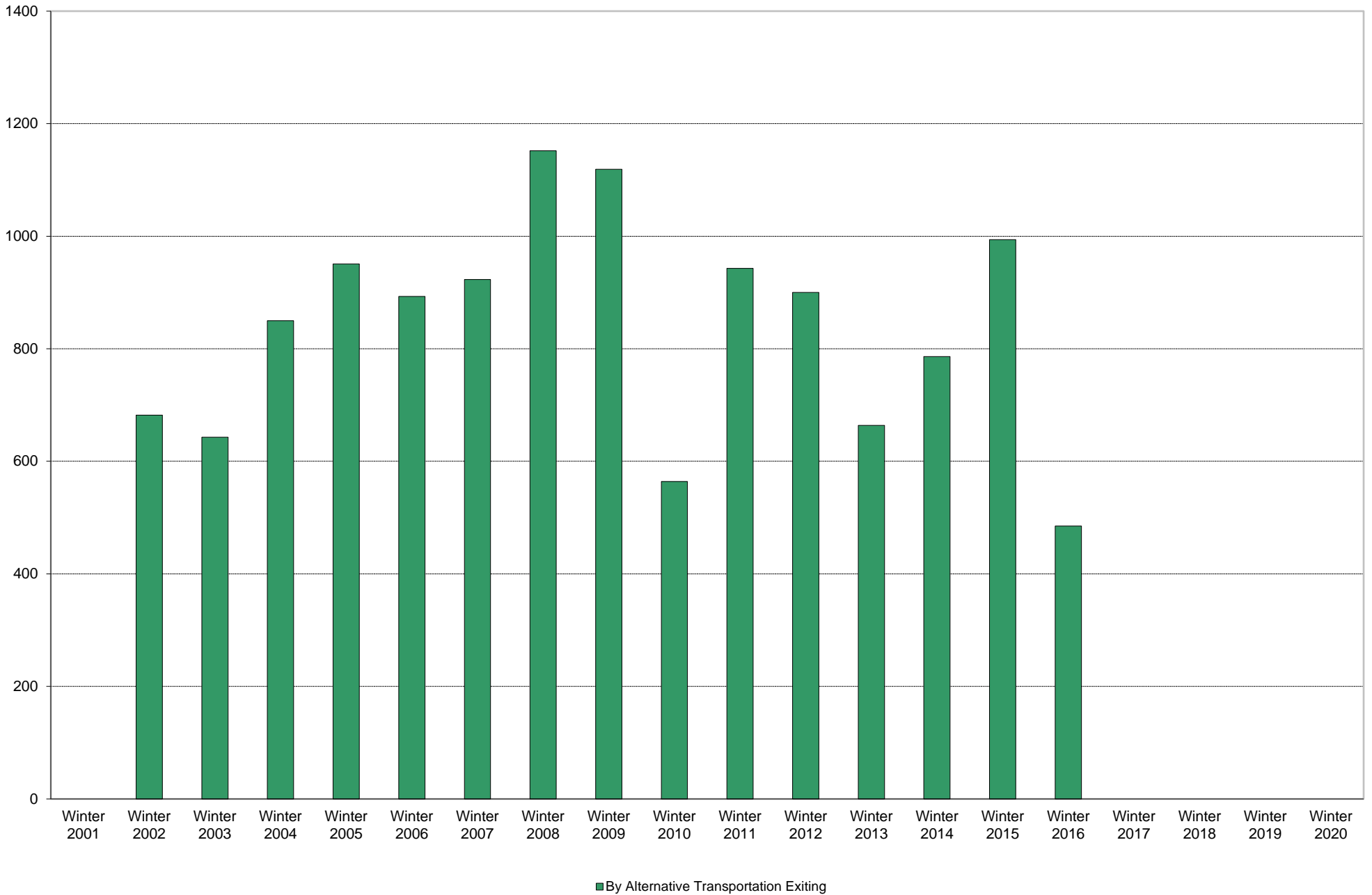


University of California, San Diego Survey of Pedestrian and Vehicular Traffic  
Commuters Exiting on Typical Weekday  
At Pangea Drive: By Alternative Transportation: Percentage of Total Commuters

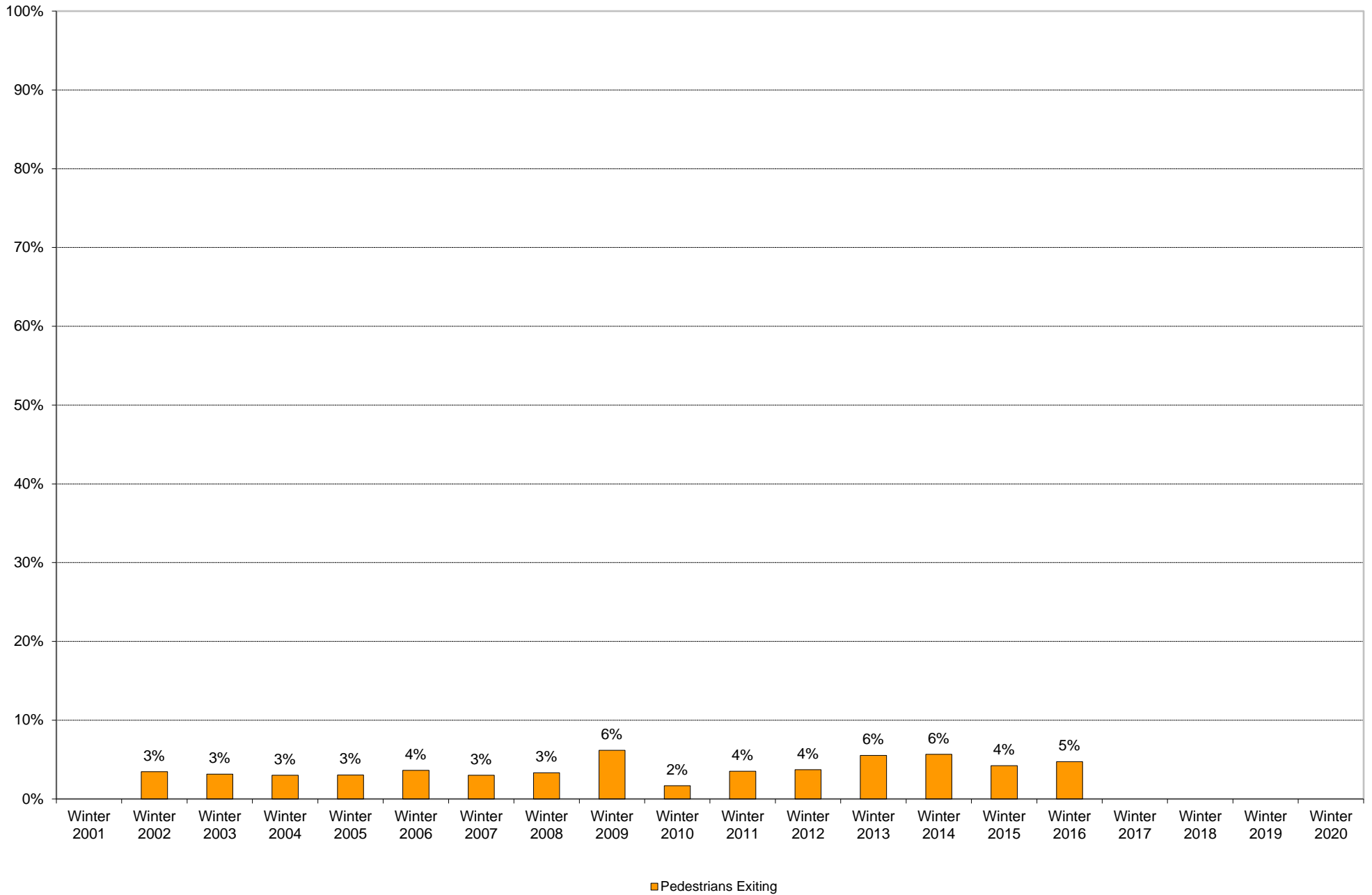


University of California, San Diego Survey of Pedestrian and Vehicular Traffic  
Commuters Exiting on Typical Weekday  
At Pangea Drive: By Alternative Transportation: Volumes

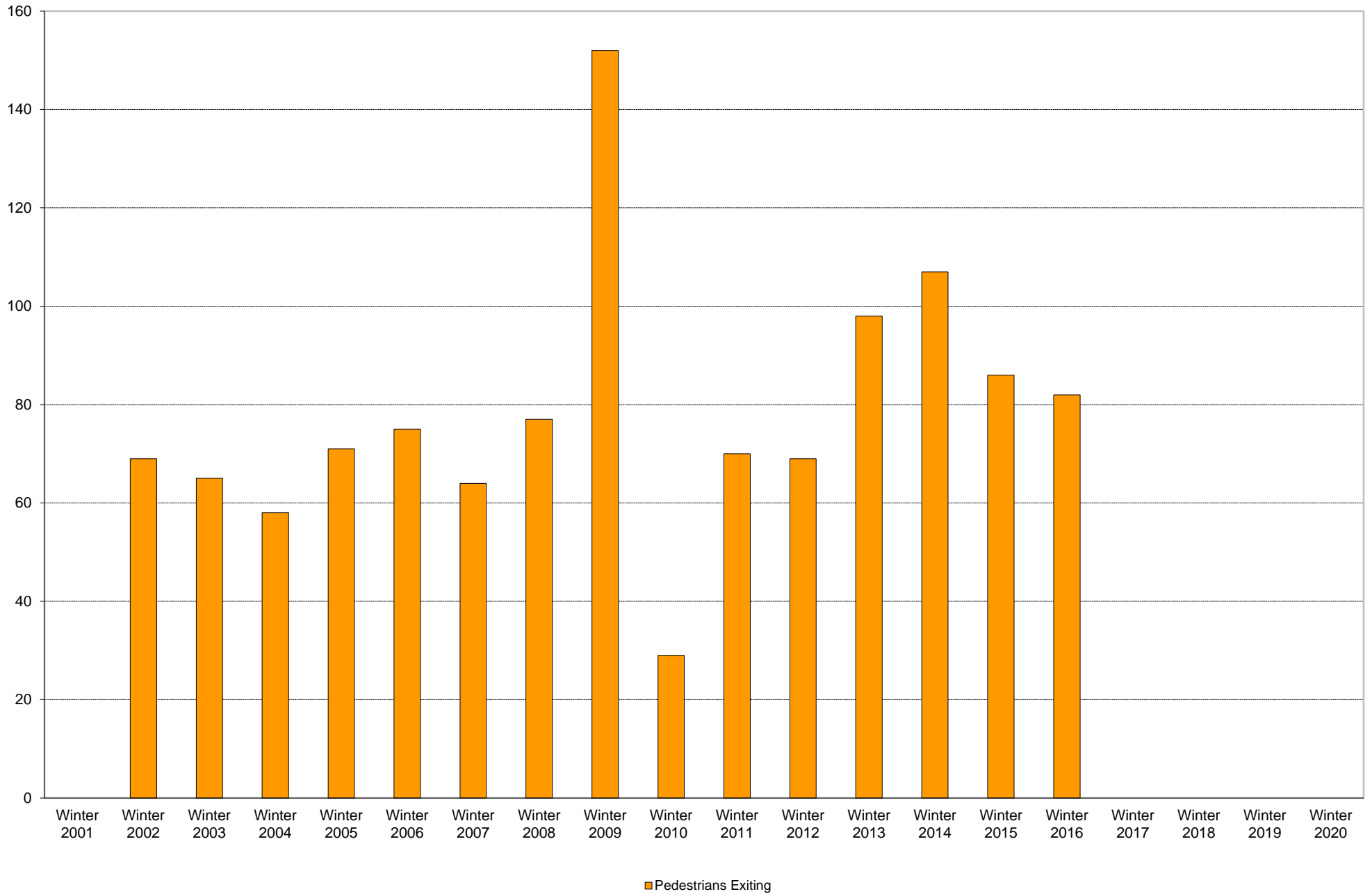




University of California, San Diego Survey of Pedestrian and Vehicular Traffic  
Commuters Exiting on Typical Weekday  
At Pangea Drive: Pedestrians: Percentage of Total Commuters

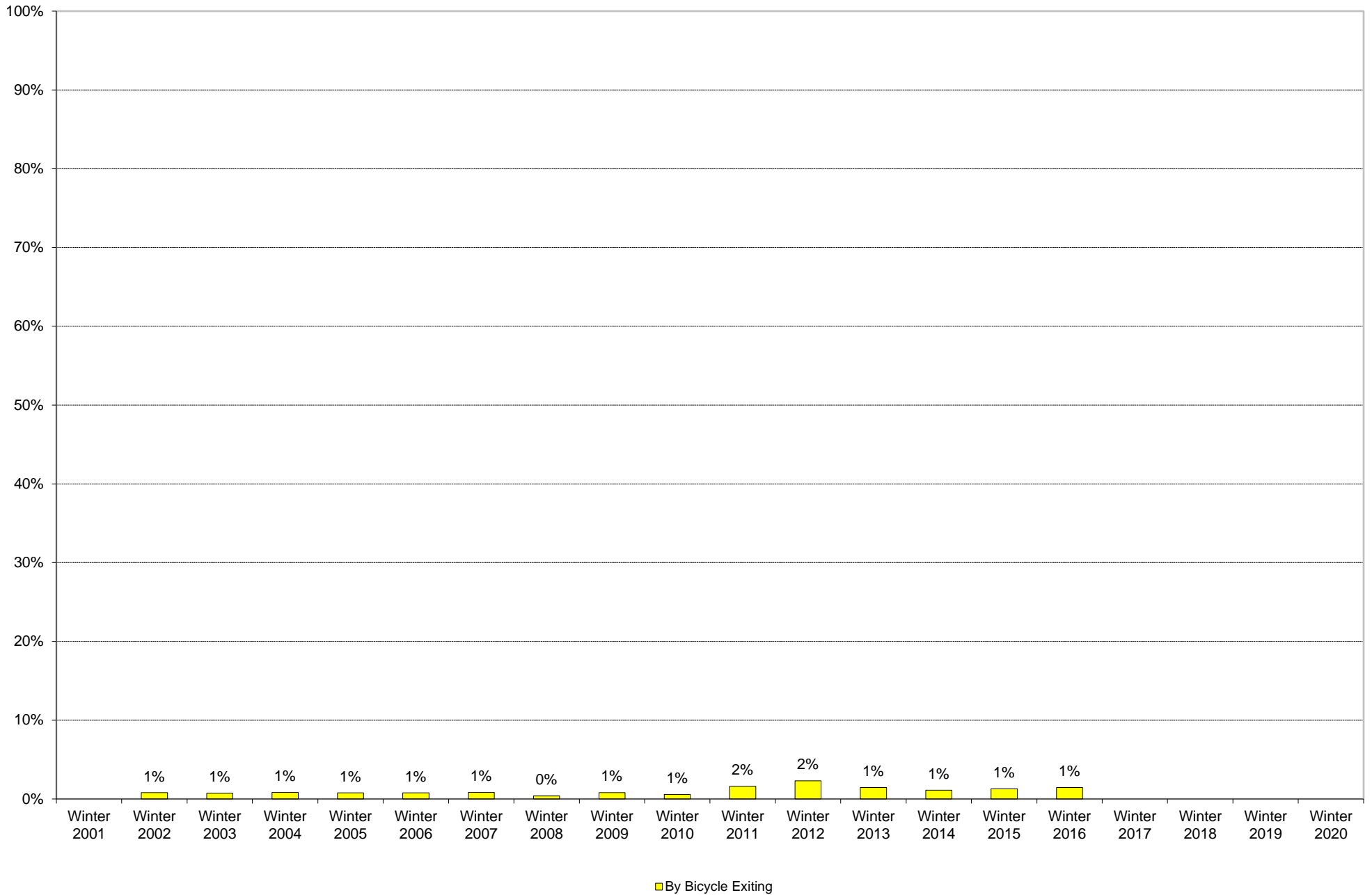


University of California, San Diego Survey of Pedestrian and Vehicular Traffic  
Commuters Exiting on Typical Weekday  
At Pangea Drive: Pedestrians: Volumes

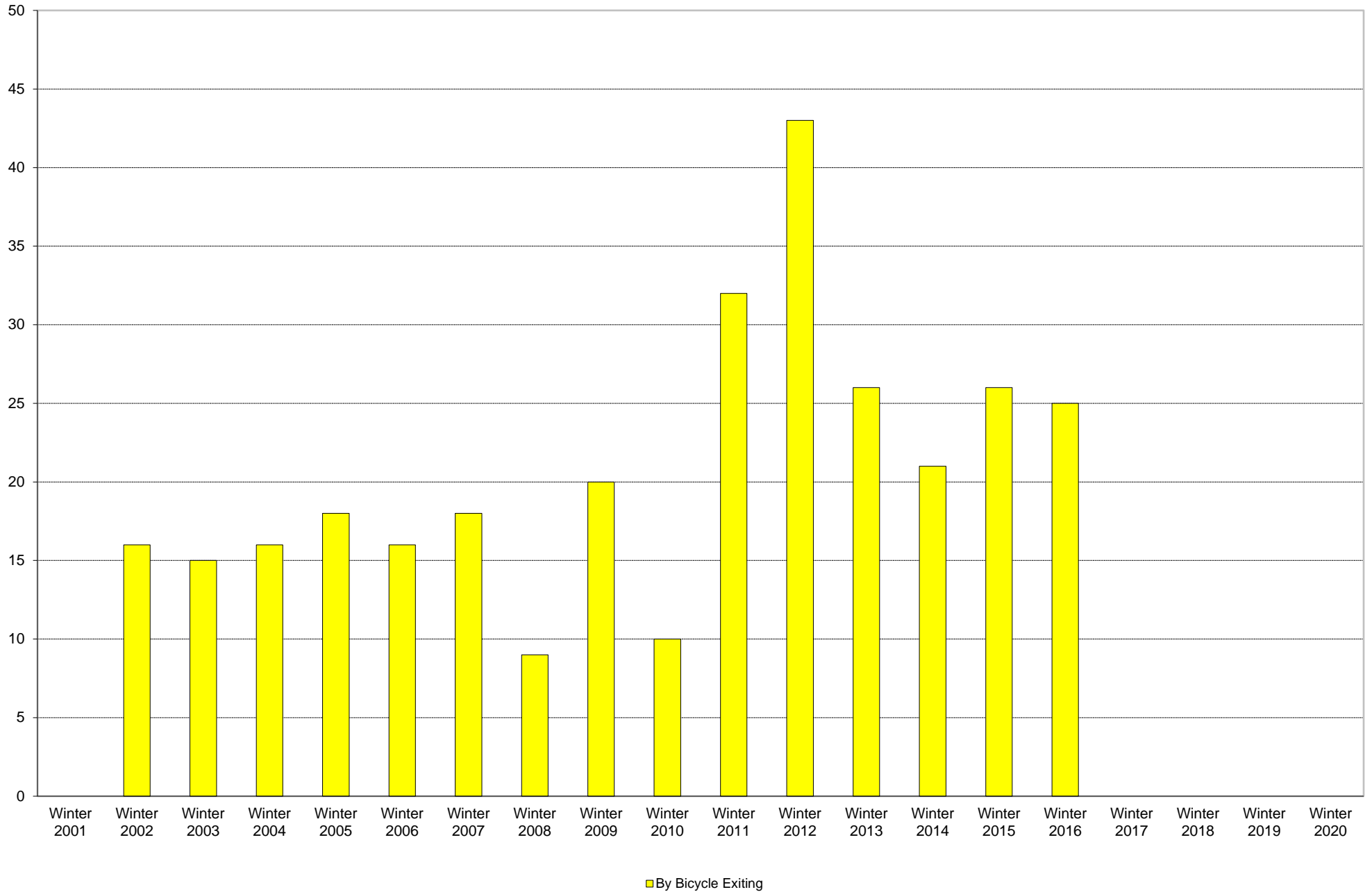




University of California, San Diego Survey of Pedestrian and Vehicular Traffic  
Commuters Exiting on Typical Weekday  
At Pangea Drive: By Bicycle: Percentage of Total Commuters



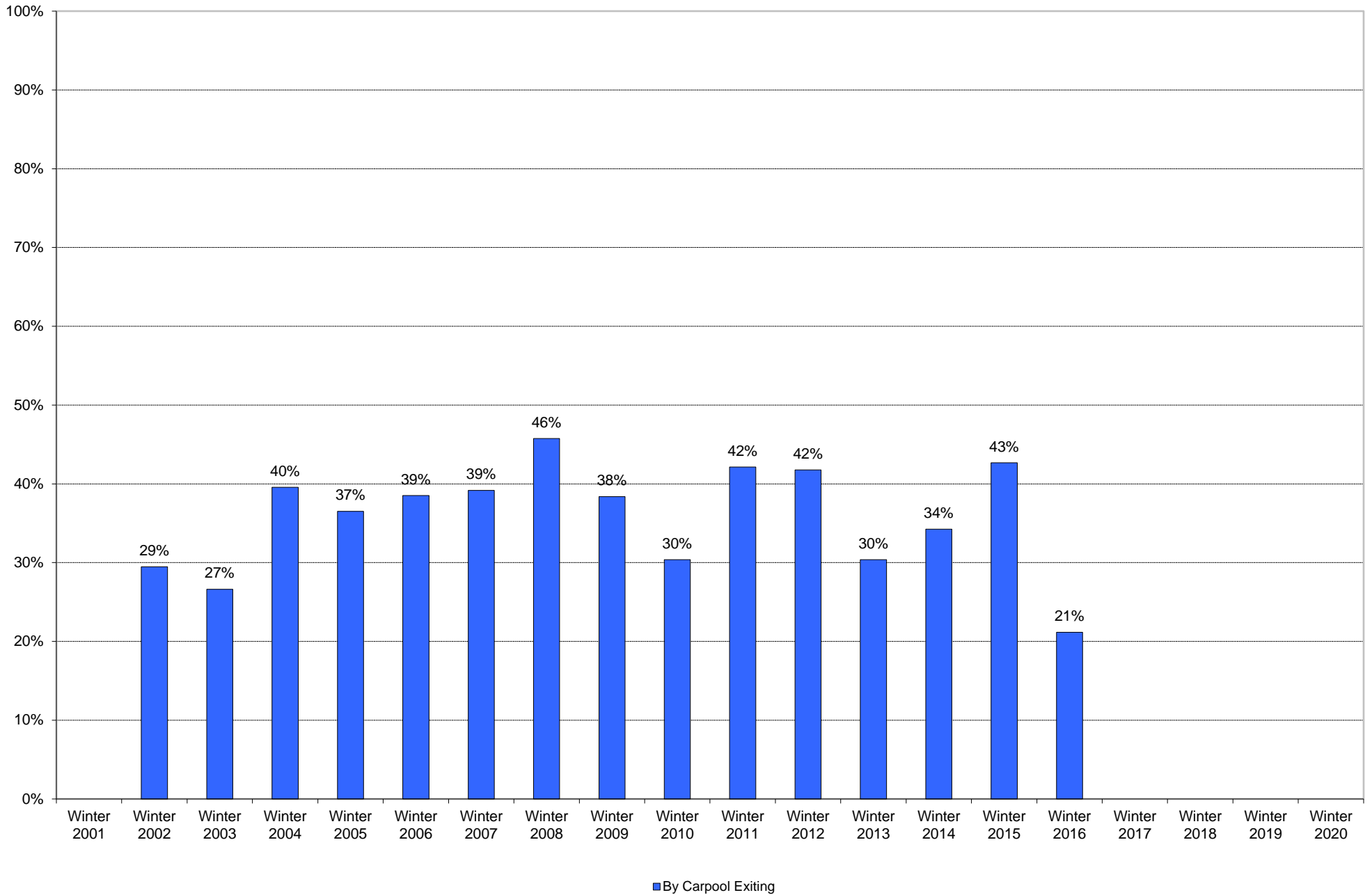
University of California, San Diego Survey of Pedestrian and Vehicular Traffic  
Commuters Exiting on Typical Weekday  
At Pangea Drive: By Bicycle: Volumes



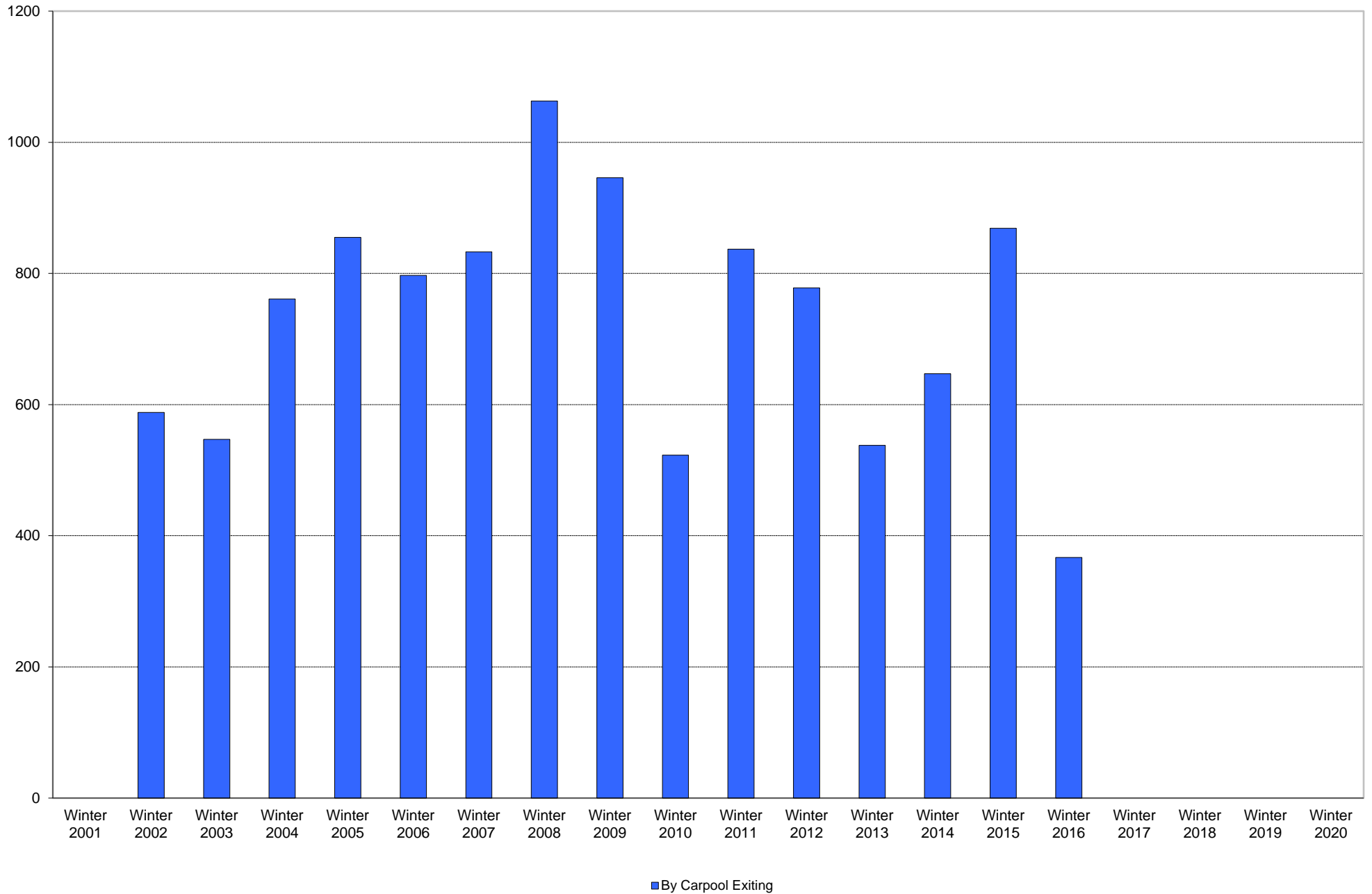




University of California, San Diego Survey of Pedestrian and Vehicular Traffic  
Commuters Exiting on Typical Weekday  
At Pangea Drive: By Carpool: Percentage of Total Commuters

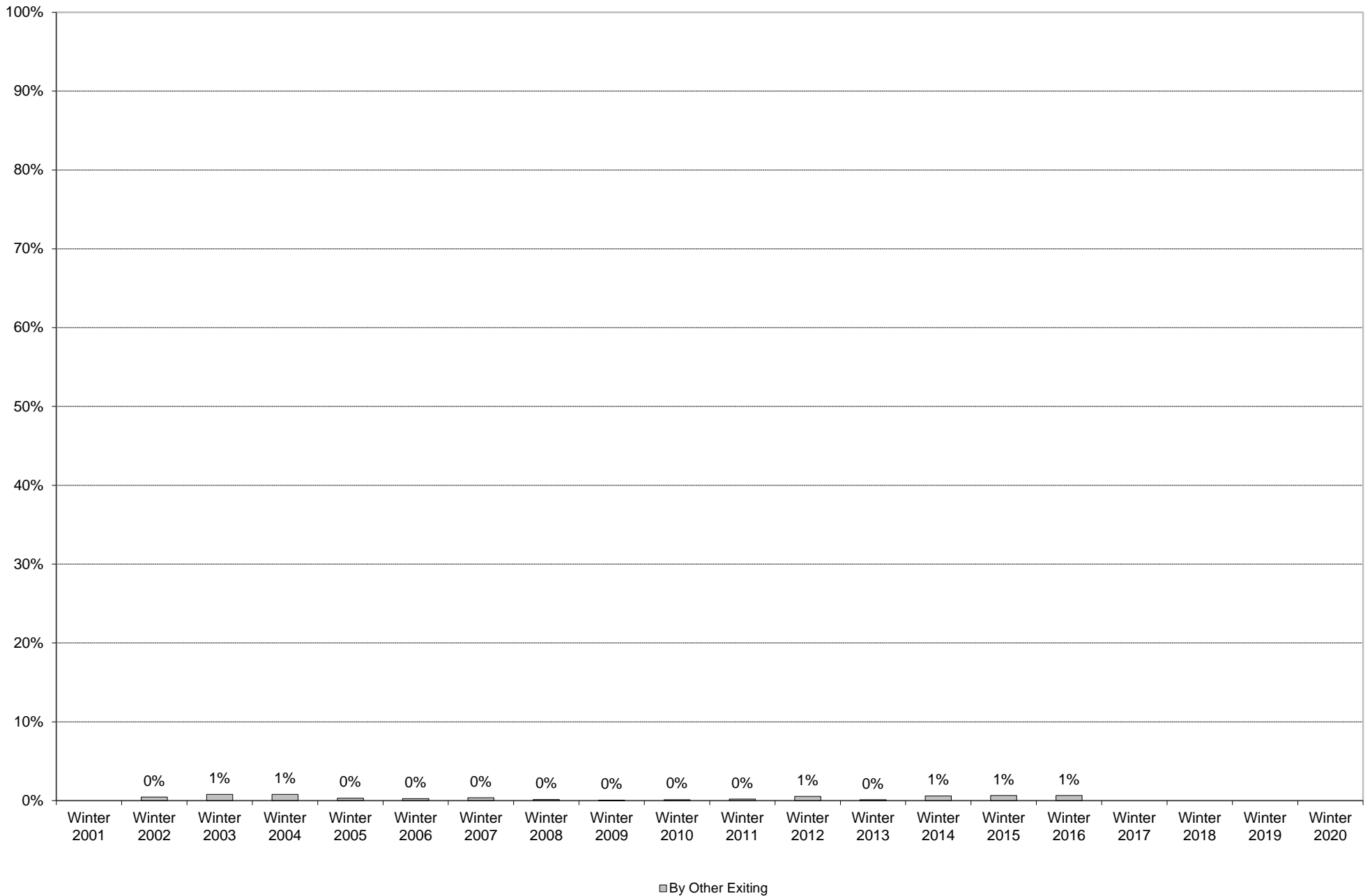


University of California, San Diego Survey of Pedestrian and Vehicular Traffic  
Commuters Exiting on Typical Weekday  
At Pangea Drive: By Carpool: Volumes

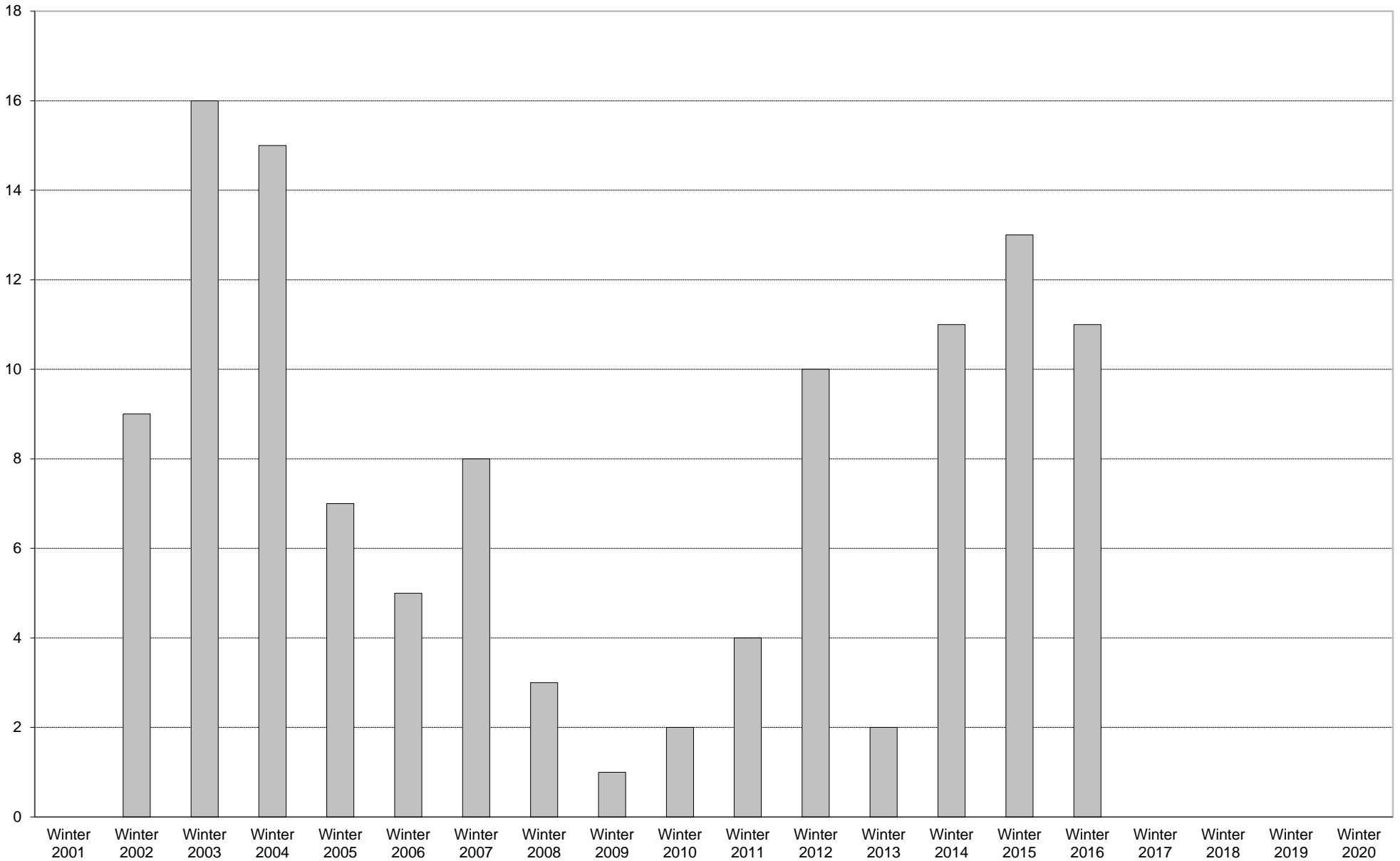




University of California, San Diego Survey of Pedestrian and Vehicular Traffic  
Commuters Exiting on Typical Weekday  
At Pangea Drive: By Other: Percentage of Total Commuters



University of California, San Diego Survey of Pedestrian and Vehicular Traffic  
Commuters Exiting on Typical Weekday  
At Pangea Drive: By Other: Volumes



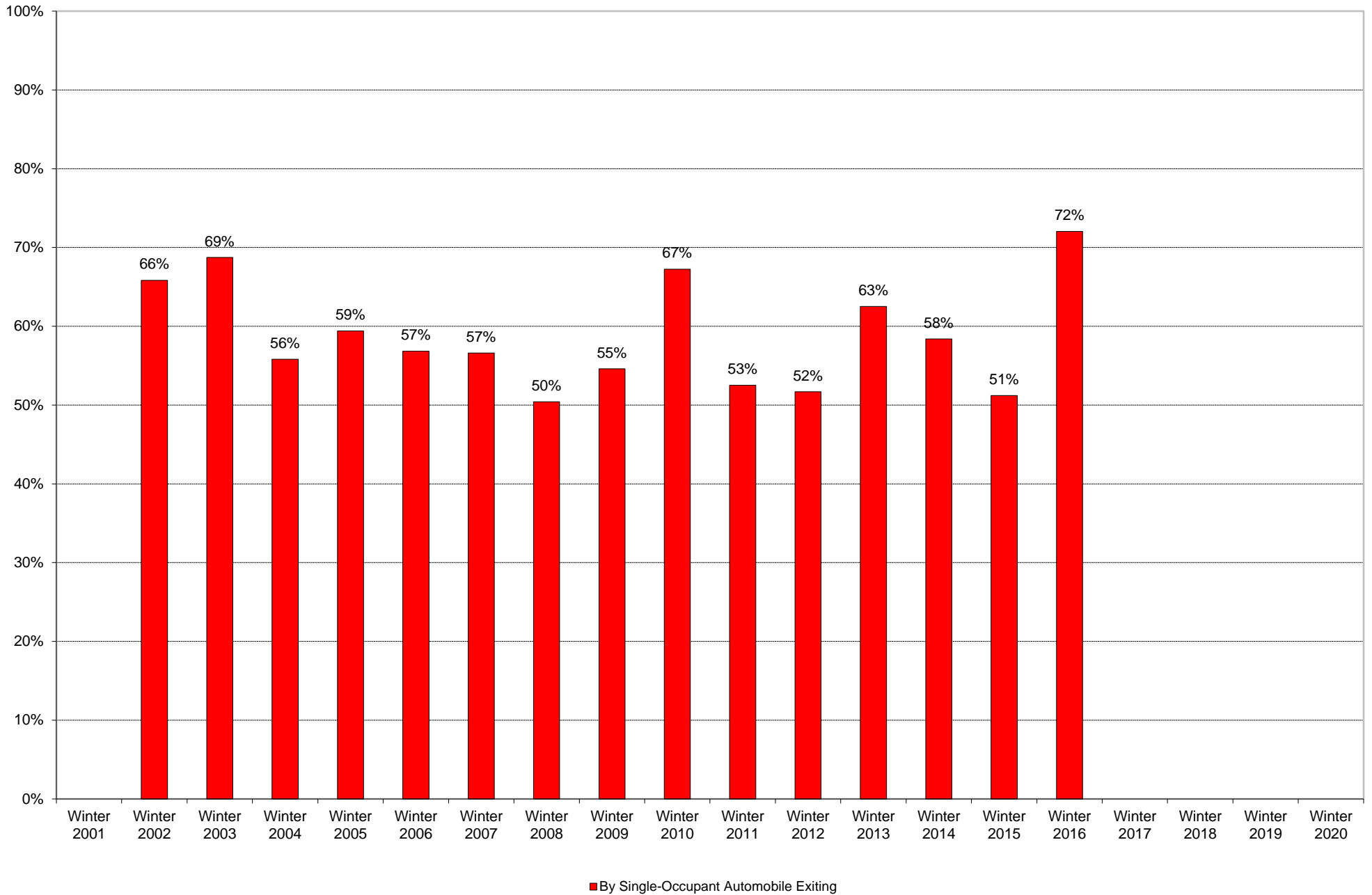
■ By Other Exiting

University of California, San Diego Survey of Pedestrian and Vehicular Traffic  
 Commuters Exiting on Typical Weekday  
 At Pangea Drive: By Other

	6am to 7am	7am to 8am	8am to 9am	9am to 10am	10am to 11am	11am to 12pm	12pm to 1pm	1pm to 2pm	2pm to 3pm	3pm to 4pm	4pm to 5pm	5pm to 6pm	6pm to 7pm	7pm to 8pm	8pm to 9pm	9pm to 10pm	Total	Percentage of Total Commuters
Winter 2001																		
Winter 2002							1	1	1	3	3	1					9	0%
Winter 2003						1	1	1		10	2	1					16	1%
Winter 2004							1			2	10		2				15	1%
Winter 2005								1	2	1	2	1					7	0%
Winter 2006							1	1				1	1		1		5	0%
Winter 2007							2					1	1	1	2	1	8	0%
Winter 2008	1									1	1						3	0%
Winter 2009				1													1	0%
Winter 2010										1						1	2	0%
Winter 2011										1	1	1		1			4	0%
Winter 2012			1	1		1		1	1				2		1	2	10	1%
Winter 2013					1							1					2	0%
Winter 2014			1		1	2	1			2	2	1		1			11	1%
Winter 2015				1				1		2	3	2			2	2	13	1%
Winter 2016								1	1	1	1			7			11	1%
Winter 2017																		
Winter 2018																		
Winter 2019																		
Winter 2020																		

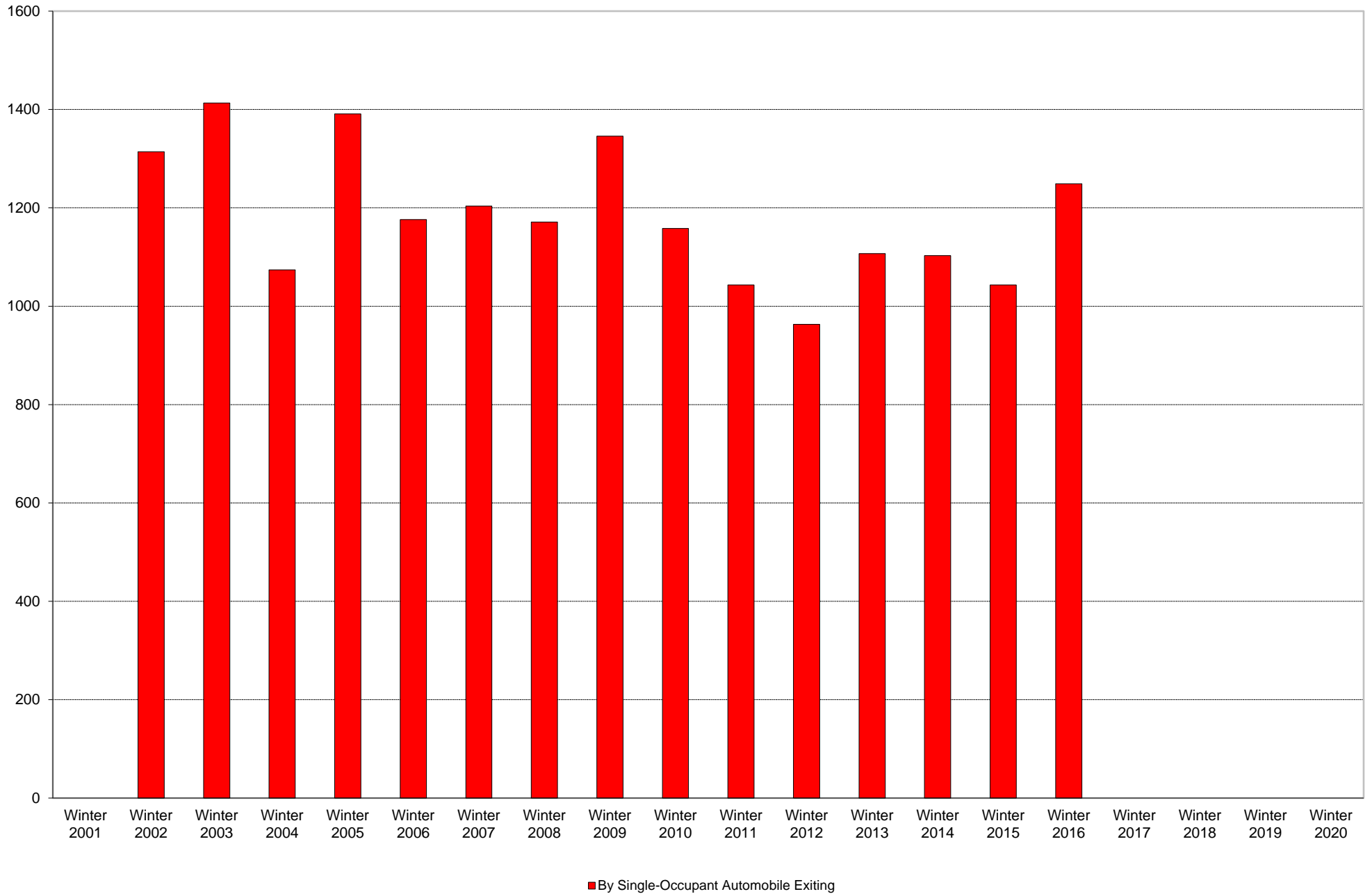
Includes motorcycle and vanpool.

University of California, San Diego Survey of Pedestrian and Vehicular Traffic  
Commuters Exiting on Typical Weekday  
At Pangea Drive: By Single-Occupant Automobile: Percentage of Total Commuters





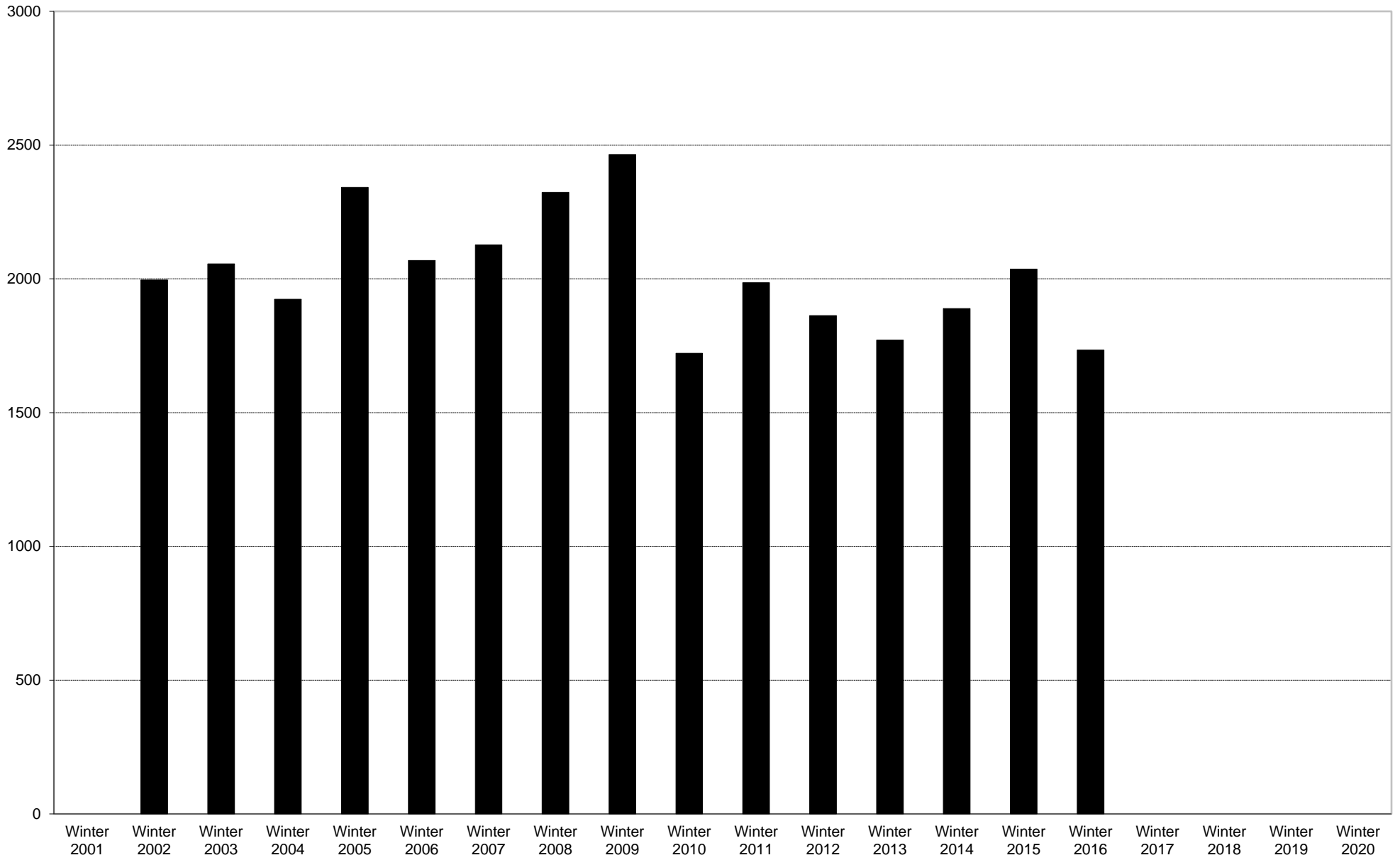
University of California, San Diego Survey of Pedestrian and Vehicular Traffic  
Commuters Exiting on Typical Weekday  
At Pangea Drive: By Single-Occupant Automobile: Volumes



University of California, San Diego Survey of Pedestrian and Vehicular Traffic  
 Commuters Exiting on Typical Weekday  
 At Pangea Drive: By Single-Occupant Automobile

	6am to 7am	7am to 8am	8am to 9am	9am to 10am	10am to 11am	11am to 12pm	12pm to 1pm	1pm to 2pm	2pm to 3pm	3pm to 4pm	4pm to 5pm	5pm to 6pm	6pm to 7pm	7pm to 8pm	8pm to 9pm	9pm to 10pm	Total	Percentage of Total Commuters
Winter 2001																		
Winter 2002	4	14	26	60	46	78	107	77	122	117	153	156	149	87	57	61	1314	66%
Winter 2003	5	18	19	61	80	87	114	90	117	155	174	142	132	82	72	65	1413	69%
Winter 2004	9	24	23	31	48	63	81	80	50	119	54	117	123	78	62	112	1074	56%
Winter 2005	9	14	25	42	75	70	103	94	123	119	148	130	118	109	105	107	1391	59%
Winter 2006	1	5	12	24	52	69	86	66	93	107	122	133	121	102	108	75	1176	57%
Winter 2007		6	17	46	58	62	112	67	85	113	100	115	124	118	100	81	1204	57%
Winter 2008	13	22	33	39	52	68	63	54	94	132	117	155	120	68	83	58	1171	50%
Winter 2009	7	19	28	43	48	66	115	68	94	132	163	159	120	109	92	83	1346	55%
Winter 2010	10	20	38	44	42	63	98	56	82	95	128	93	119	75	75	120	1158	67%
Winter 2011	11	16	26	37	30	32	75	73	56	98	102	91	112	67	73	144	1043	53%
Winter 2012	11	18	20	27	45	50	79	57	74	84	103	65	89	58	64	119	963	52%
Winter 2013	8	29	44	50	52	68	84	71	80	102	128	113	110	53	65	50	1107	63%
Winter 2014	12	11	35	39	52	69	70	50	84	104	103	77	109	114	63	111	1103	58%
Winter 2015	12	40	48	38	51	41	100	58	78	119	93	73	99	69	59	65	1043	51%
Winter 2016	16	24	38	67	55	76	105	77	105	127	105	86	58	108	116	86	1249	72%
Winter 2017																		
Winter 2018																		
Winter 2019																		
Winter 2020																		

University of California, San Diego Survey of Pedestrian and Vehicular Traffic  
Commuters Exiting on Typical Weekday  
At Pangea Drive: Total Commuters: Volumes



■ Total Commuters Exiting

