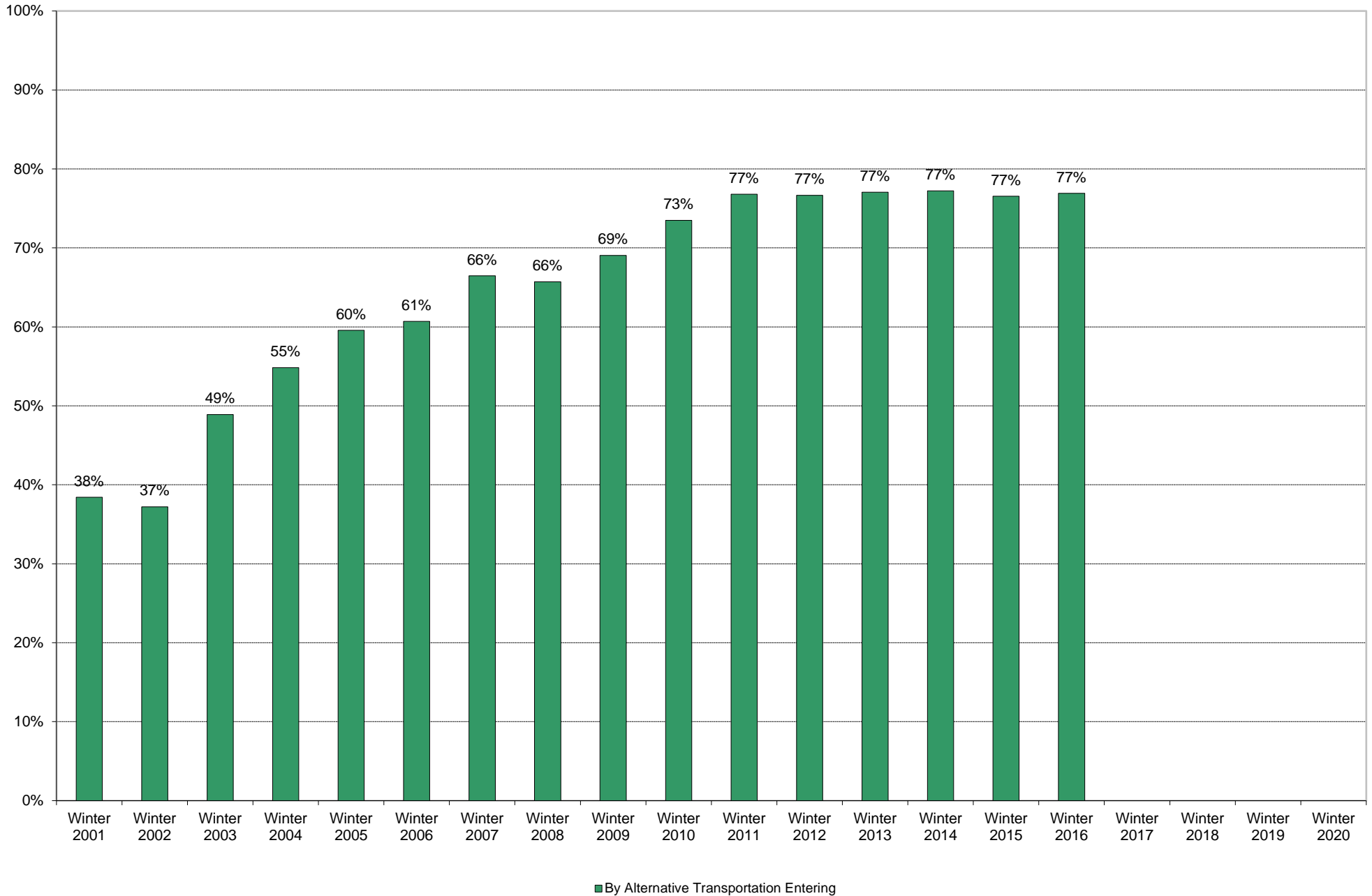
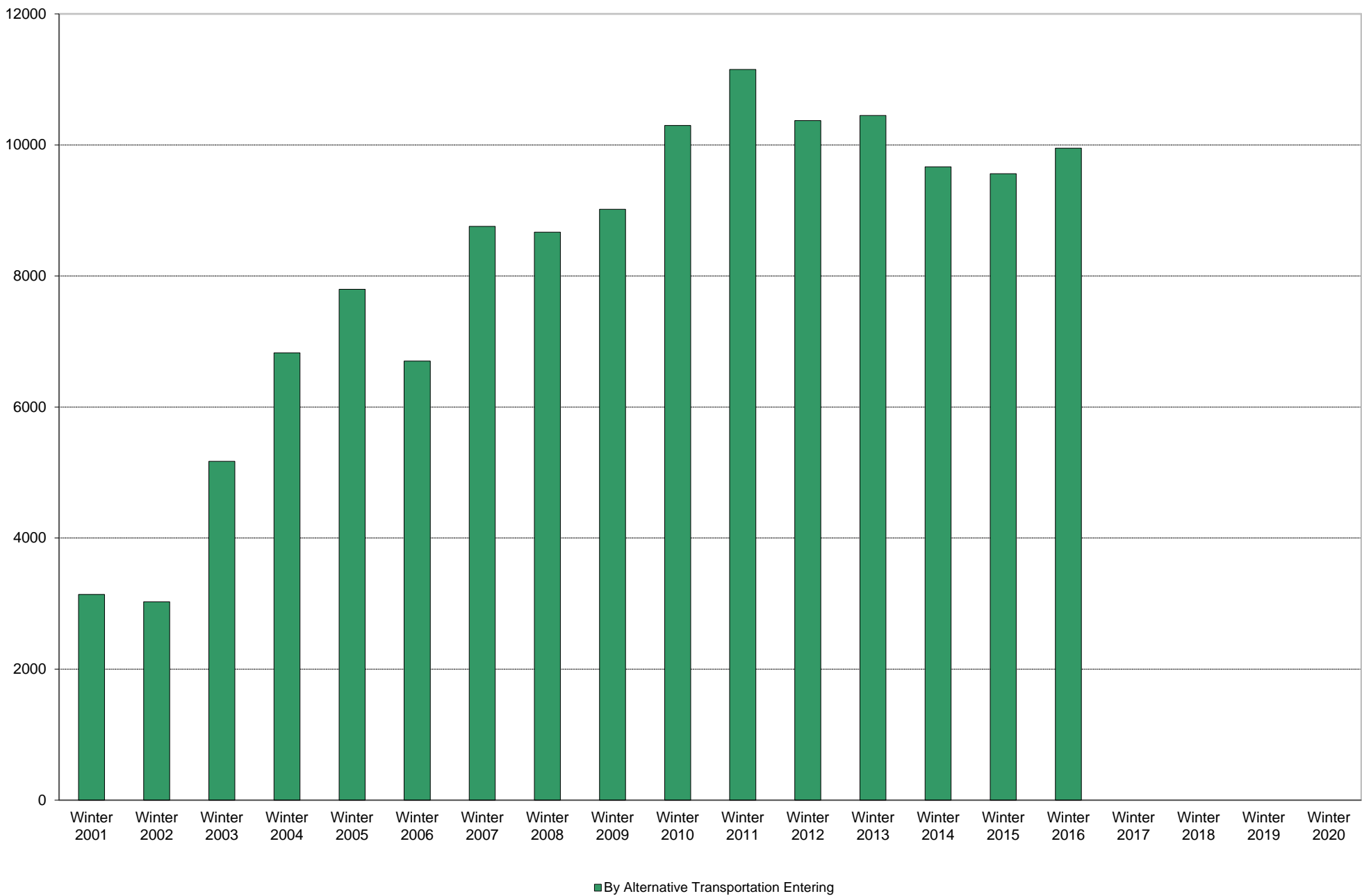


University of California, San Diego Survey of Pedestrian and Vehicular Traffic  
Commuters Entering on Typical Weekday  
At Gilman Drive: By Alternative Transportation: Percentage of Total Commuters

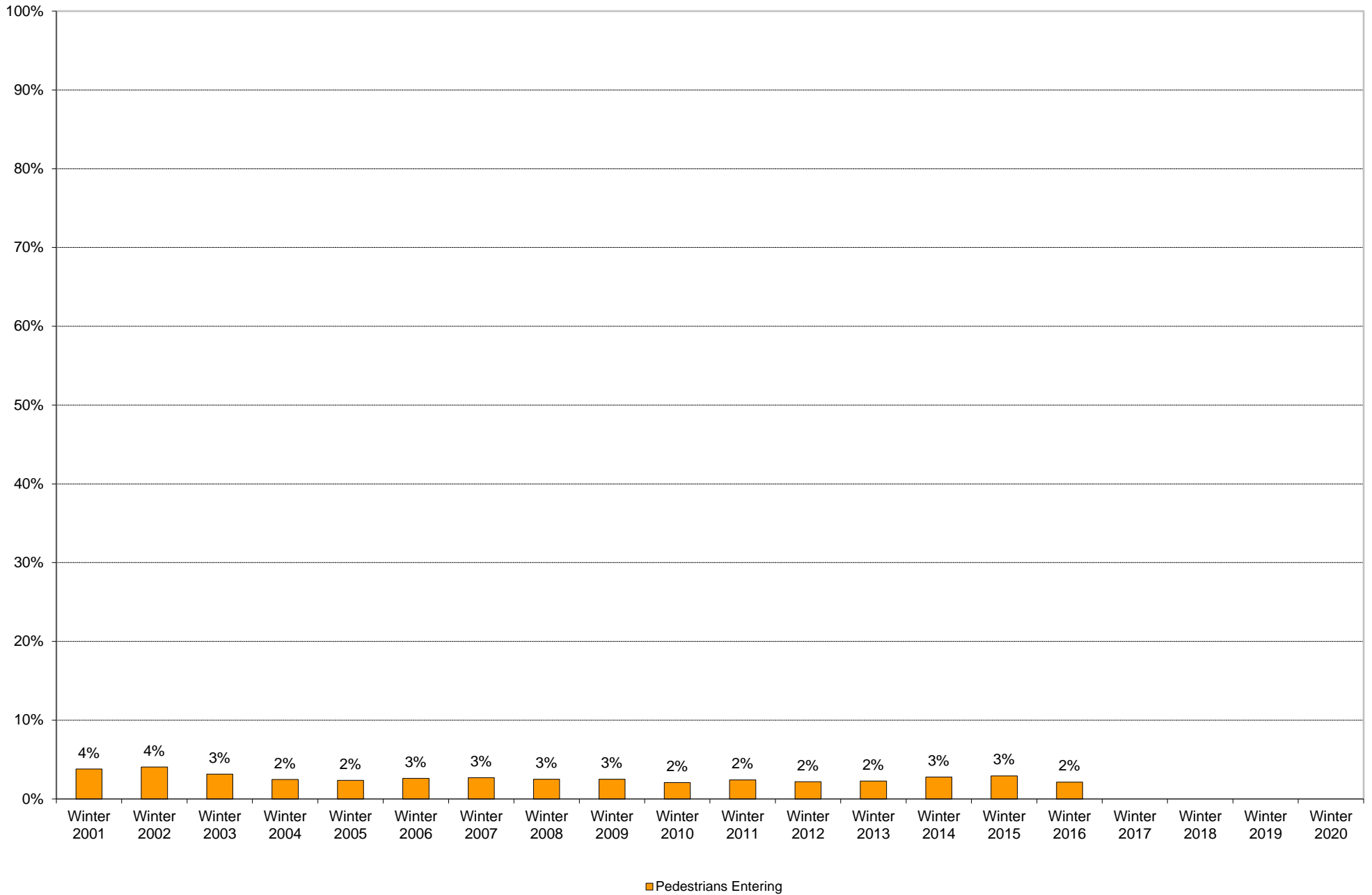


University of California, San Diego Survey of Pedestrian and Vehicular Traffic  
Commuters Entering on Typical Weekday  
At Gilman Drive: By Alternative Transportation: Volumes

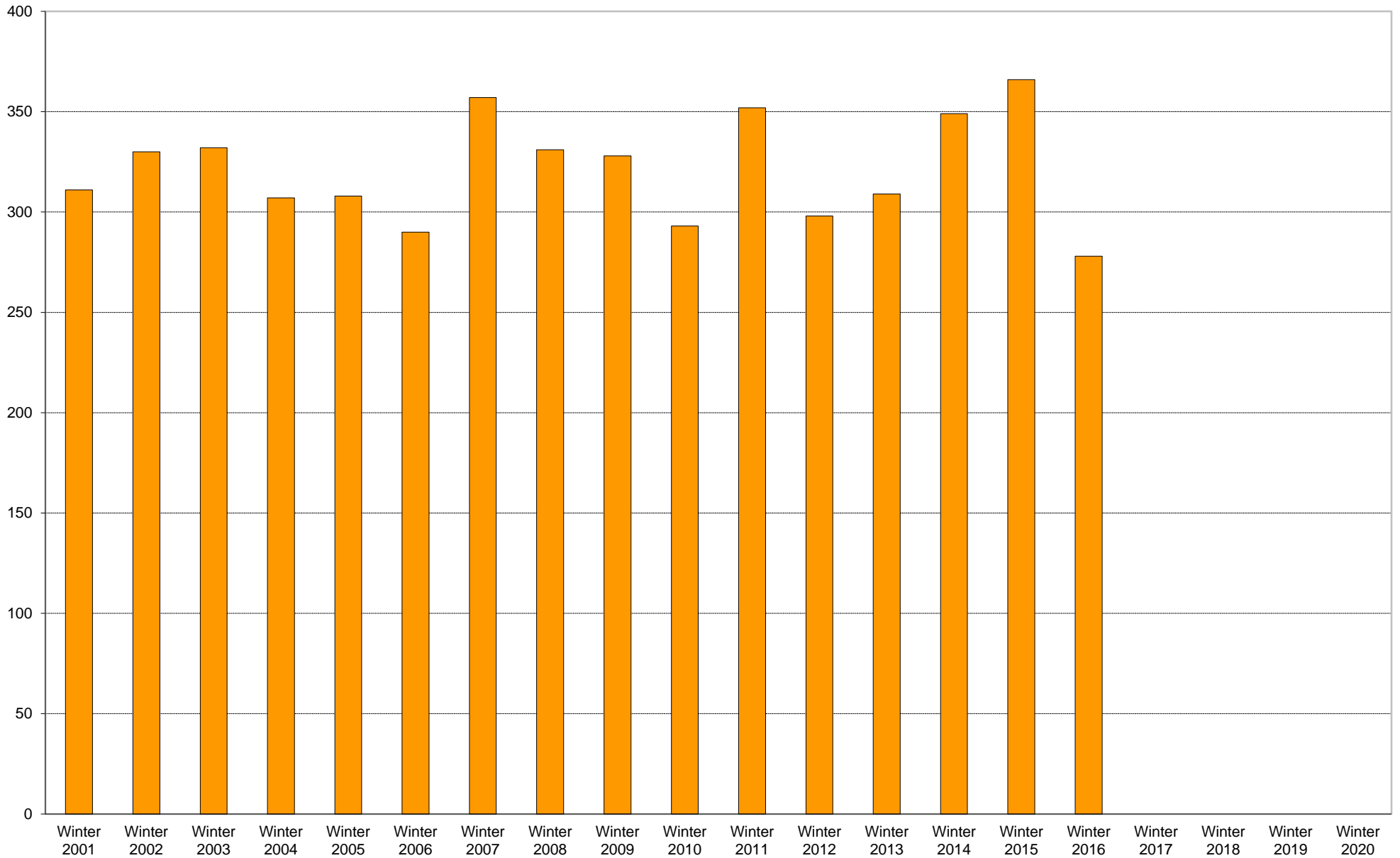




University of California, San Diego Survey of Pedestrian and Vehicular Traffic  
Commuters Entering on Typical Weekday  
At Gilman Drive: Pedestrians: Percentage of Total Commuters



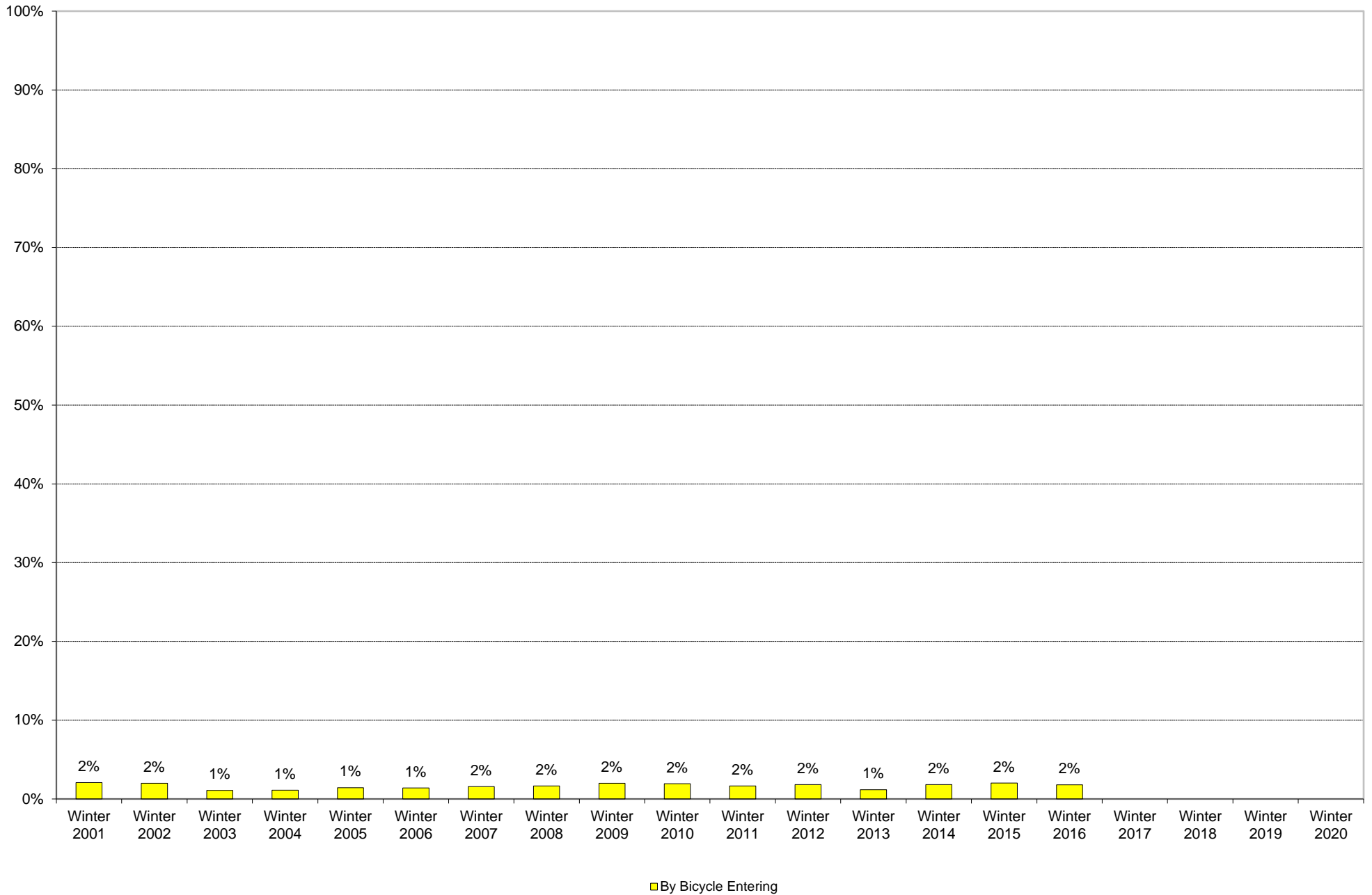
University of California, San Diego Survey of Pedestrian and Vehicular Traffic  
Commuters Entering on Typical Weekday  
At Gilman Drive: Pedestrians: Volumes



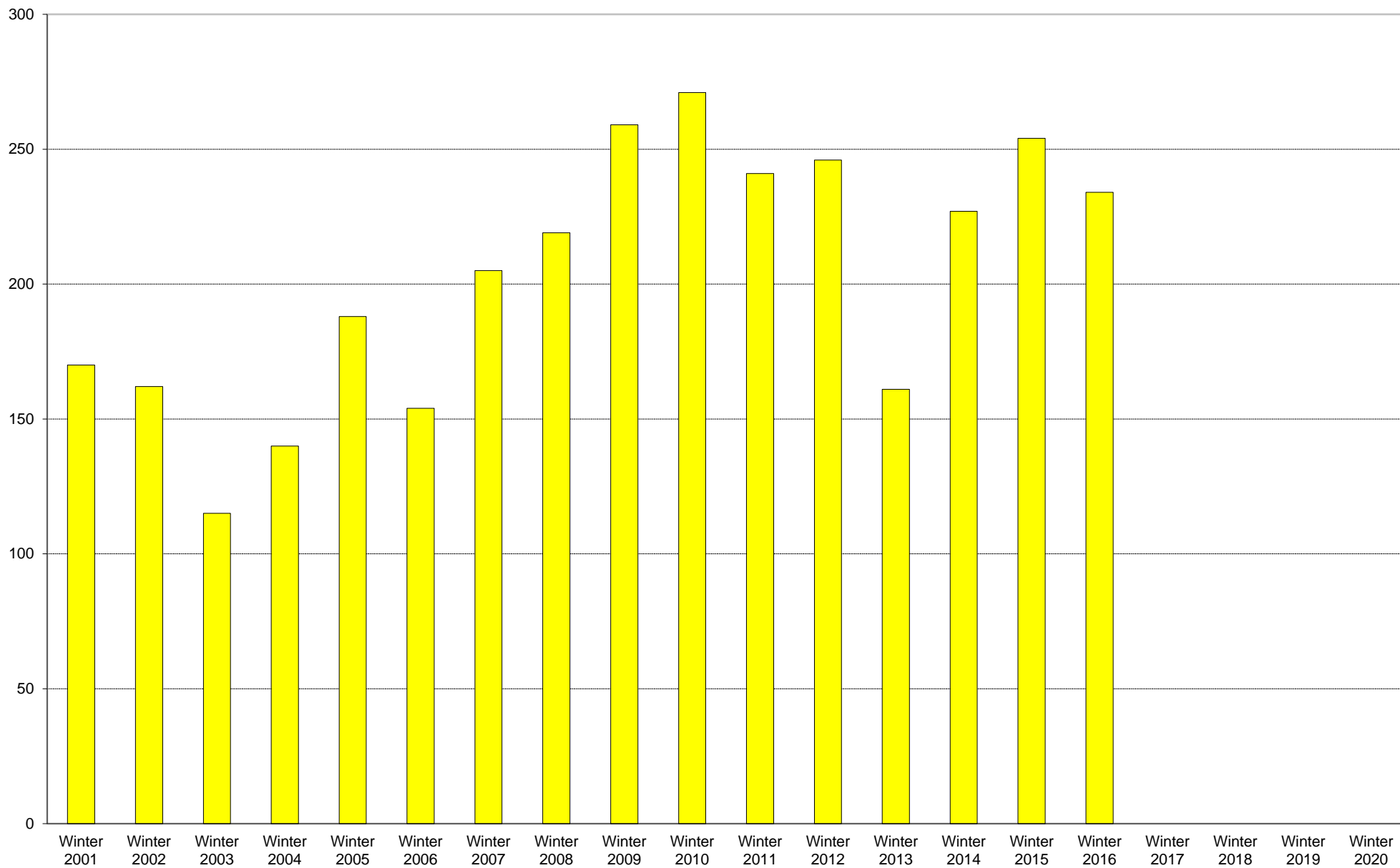
■ Pedestrians Entering



University of California, San Diego Survey of Pedestrian and Vehicular Traffic  
Commuters Entering on Typical Weekday  
At Gilman Drive: By Bicycle: Percentage of Total Commuters



University of California, San Diego Survey of Pedestrian and Vehicular Traffic  
Commuters Entering on Typical Weekday  
At Gilman Drive: By Bicycle: Volumes

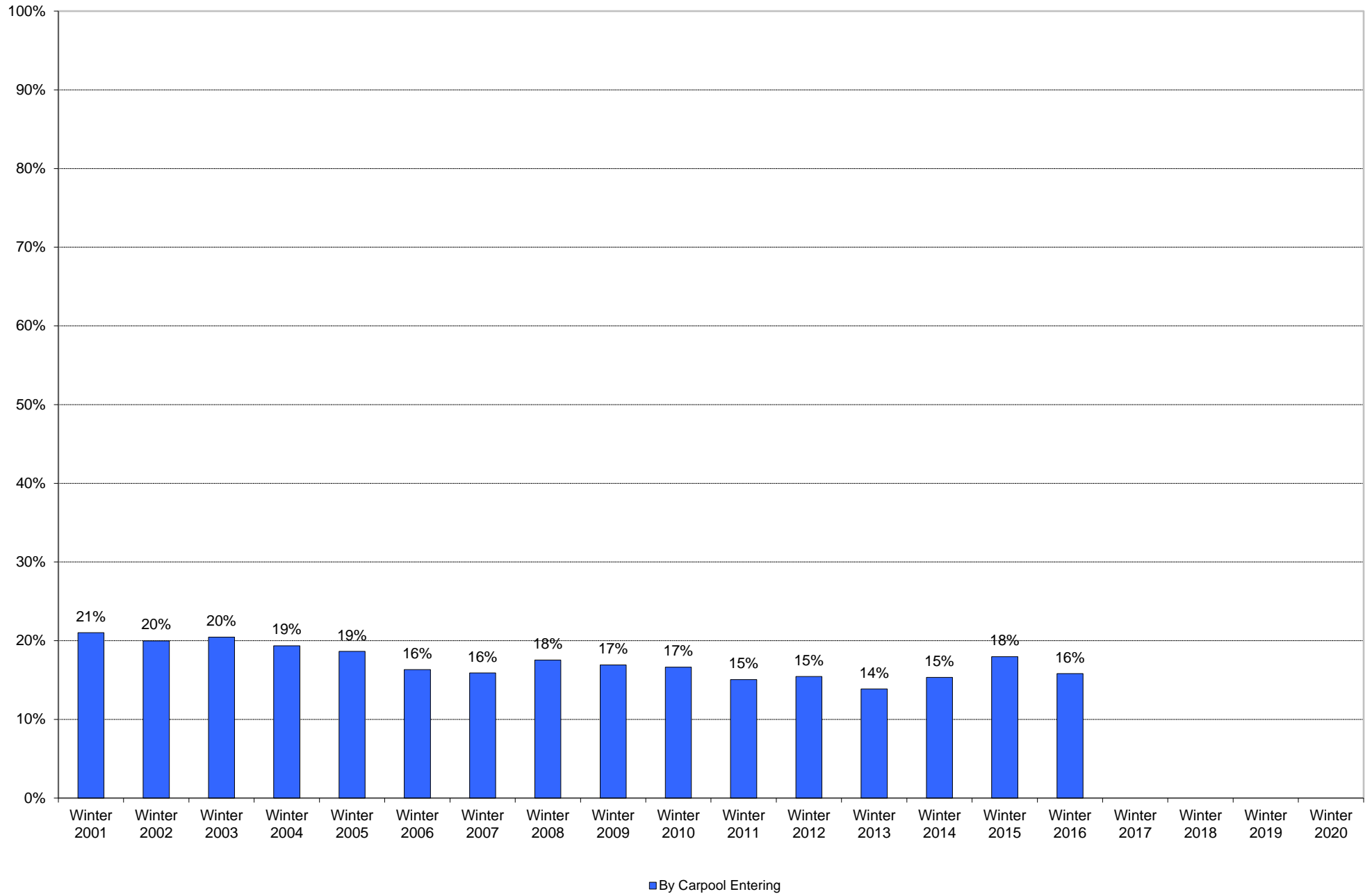


■ By Bicycle Entering

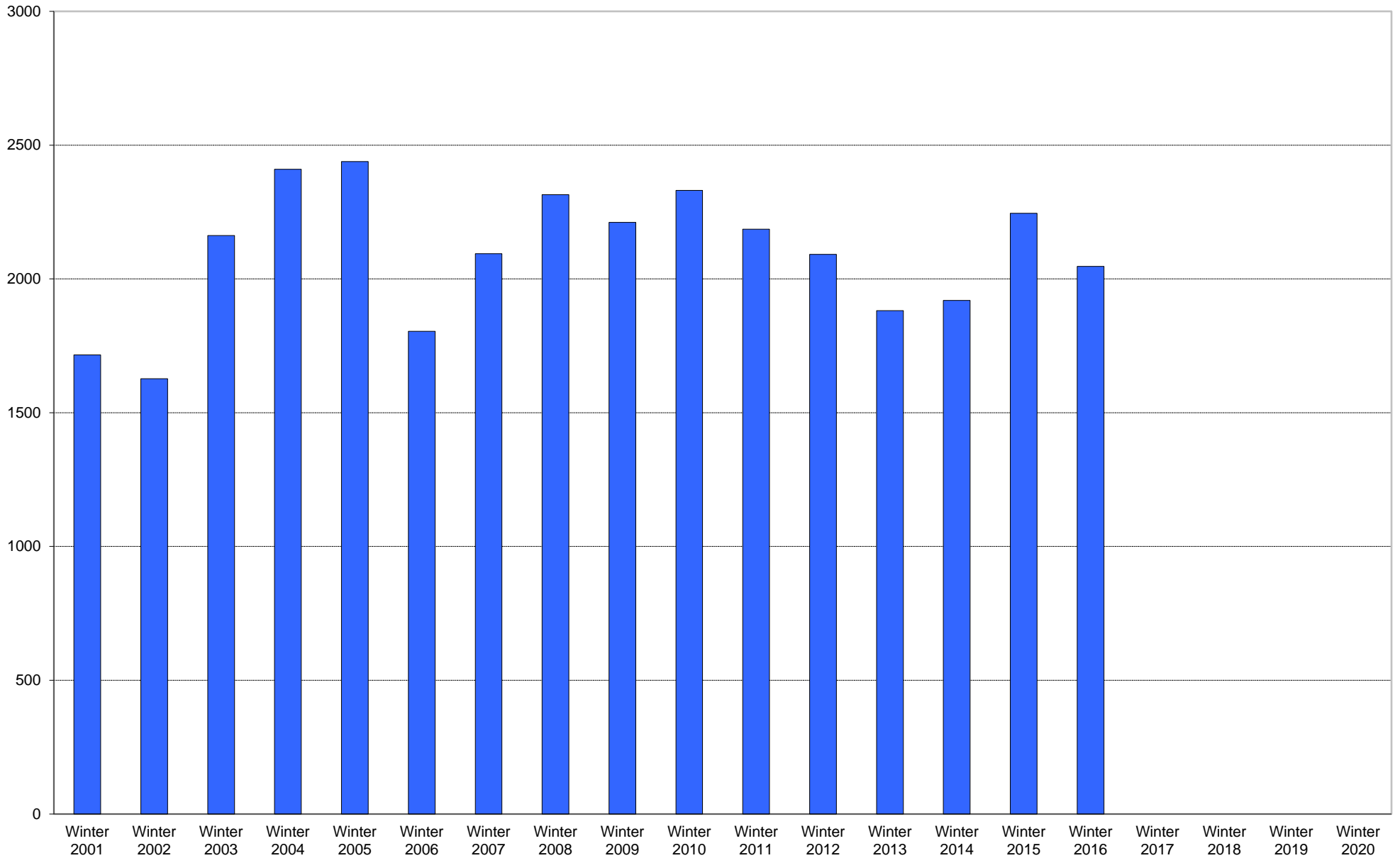




University of California, San Diego Survey of Pedestrian and Vehicular Traffic  
Commuters Entering on Typical Weekday  
At Gilman Drive: By Carpool: Percentage of Total Commuters



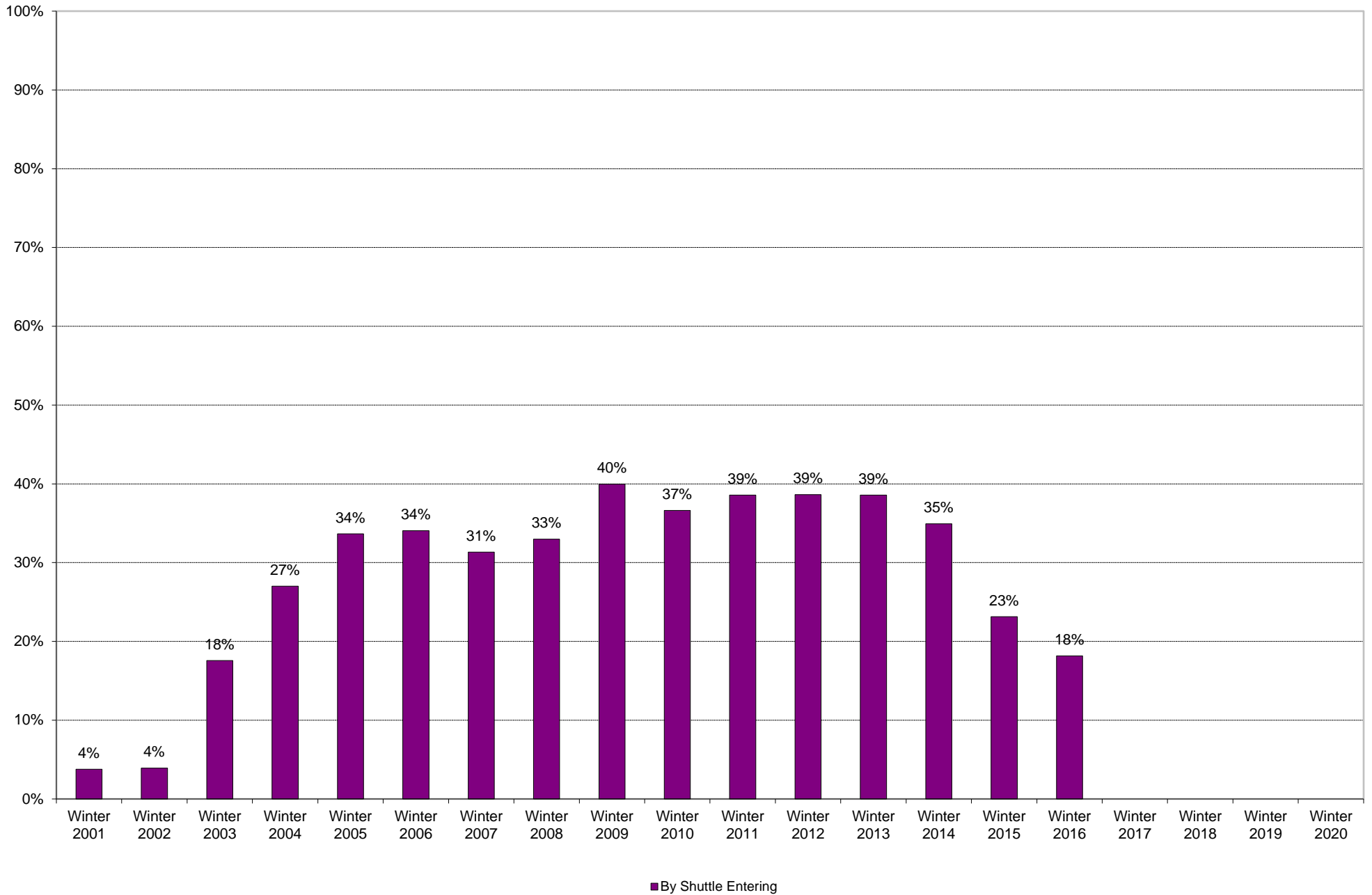
University of California, San Diego Survey of Pedestrian and Vehicular Traffic  
Commuters Entering on Typical Weekday  
At Gilman Drive: By Carpool: Volumes



■ By Carpool Entering



University of California, San Diego Survey of Pedestrian and Vehicular Traffic  
Commuters Entering on Typical Weekday  
At Gilman Drive: By Shuttle: Percentage of Total Commuters



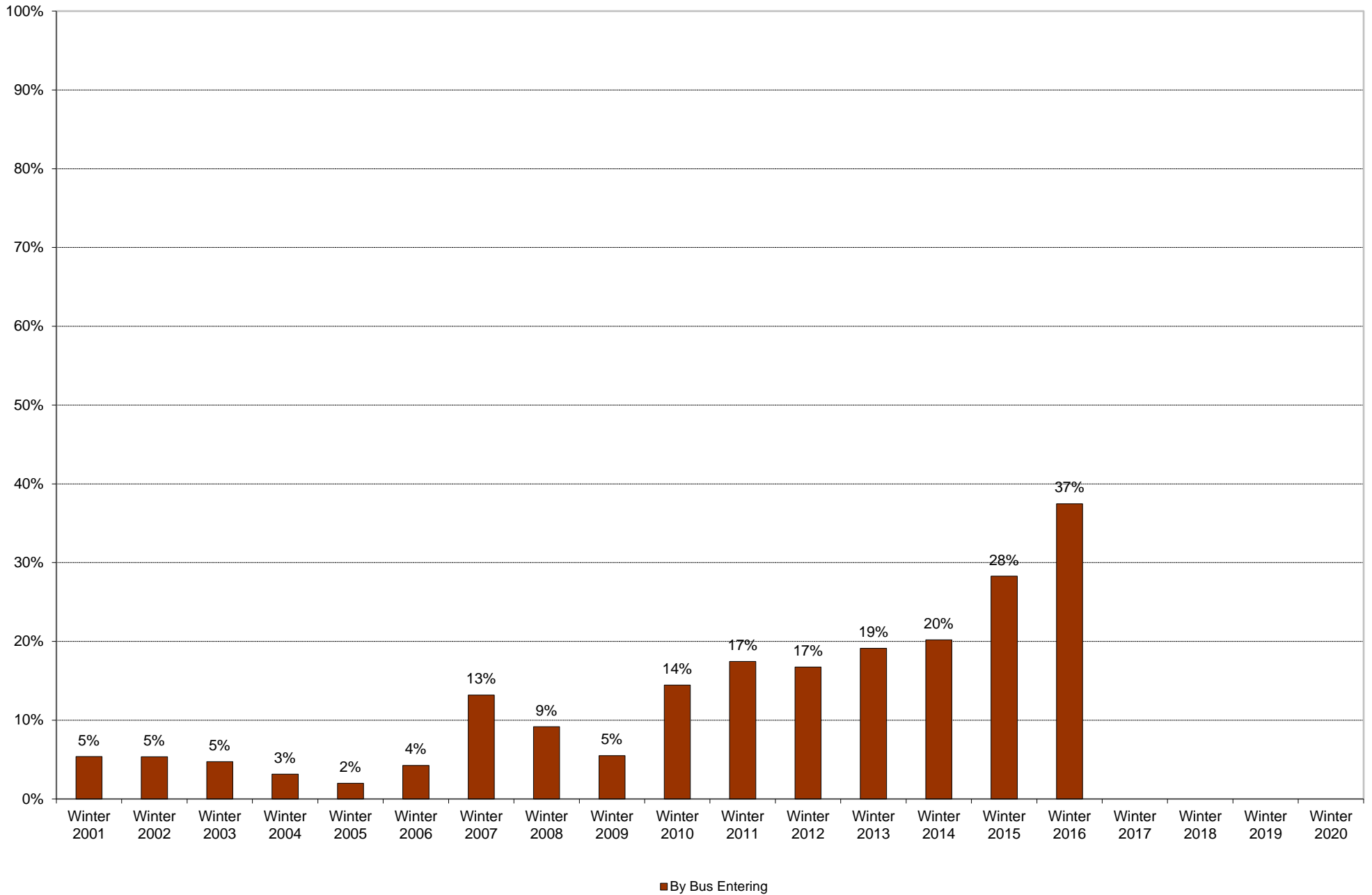
University of California, San Diego Survey of Pedestrian and Vehicular Traffic  
Commuters Entering on Typical Weekday  
At Gilman Drive: By Shuttle: Volumes



■ By Shuttle Entering

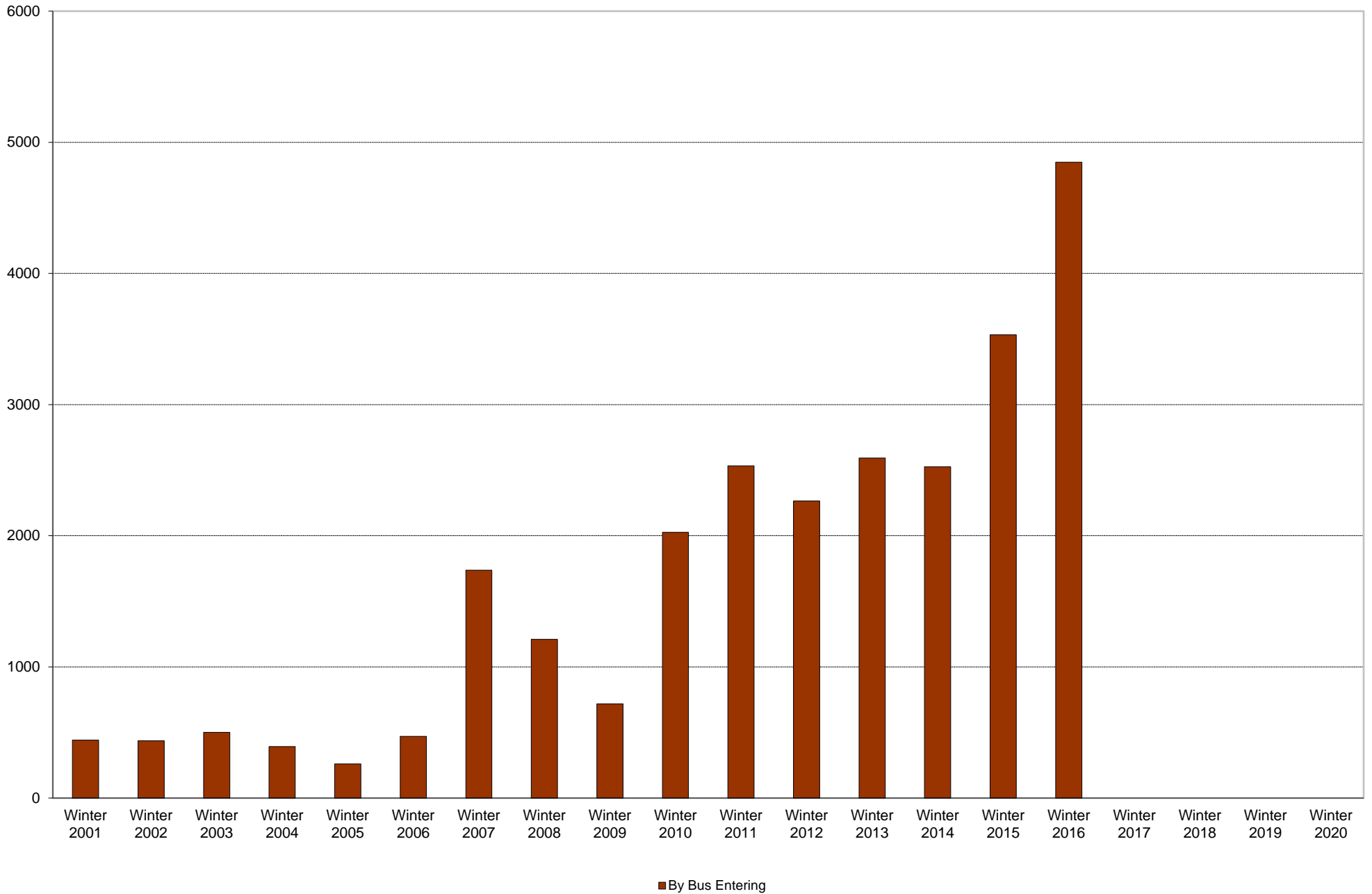


University of California, San Diego Survey of Pedestrian and Vehicular Traffic  
Commuters Entering on Typical Weekday  
At Gilman Drive: By Bus: Percentage of Total Commuters



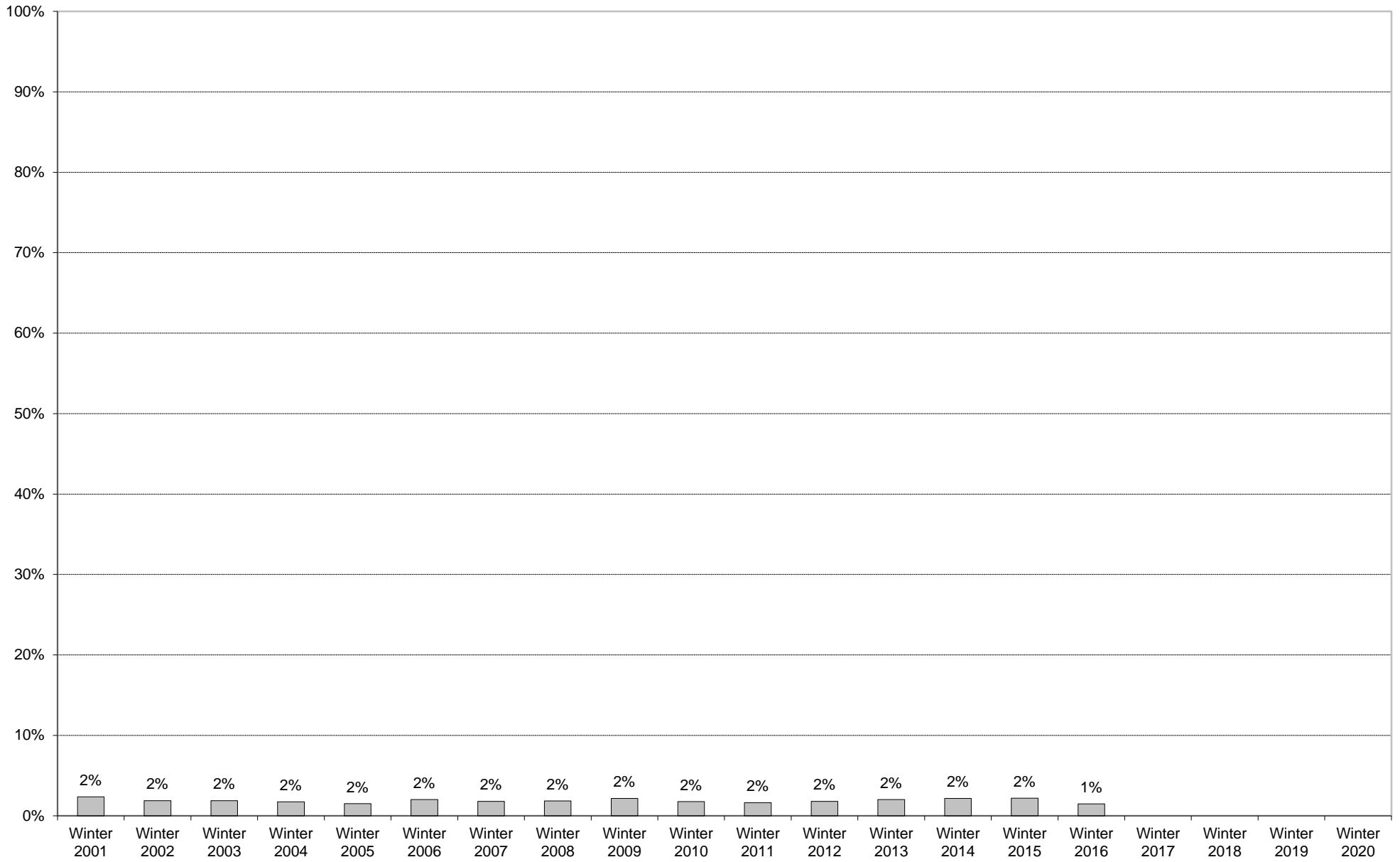


University of California, San Diego Survey of Pedestrian and Vehicular Traffic  
Commuters Entering on Typical Weekday  
At Gilman Drive: By Bus: Volumes



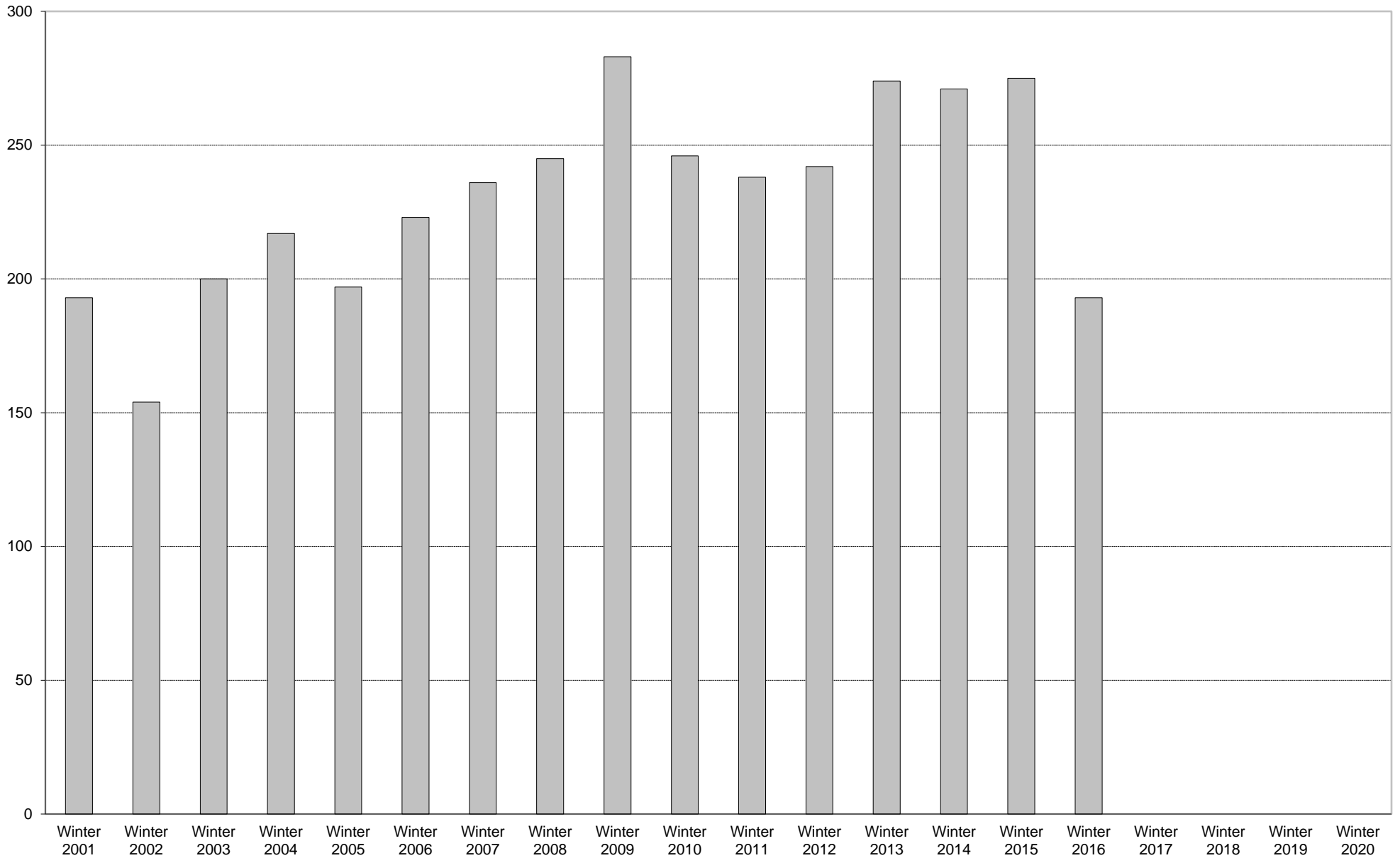


University of California, San Diego Survey of Pedestrian and Vehicular Traffic  
Commuters Entering on Typical Weekday  
At Gilman Drive: By Other: Percentage of Total Commuters



■ By Other Entering

University of California, San Diego Survey of Pedestrian and Vehicular Traffic  
Commuters Entering on Typical Weekday  
At Gilman Drive: By Other: Volumes



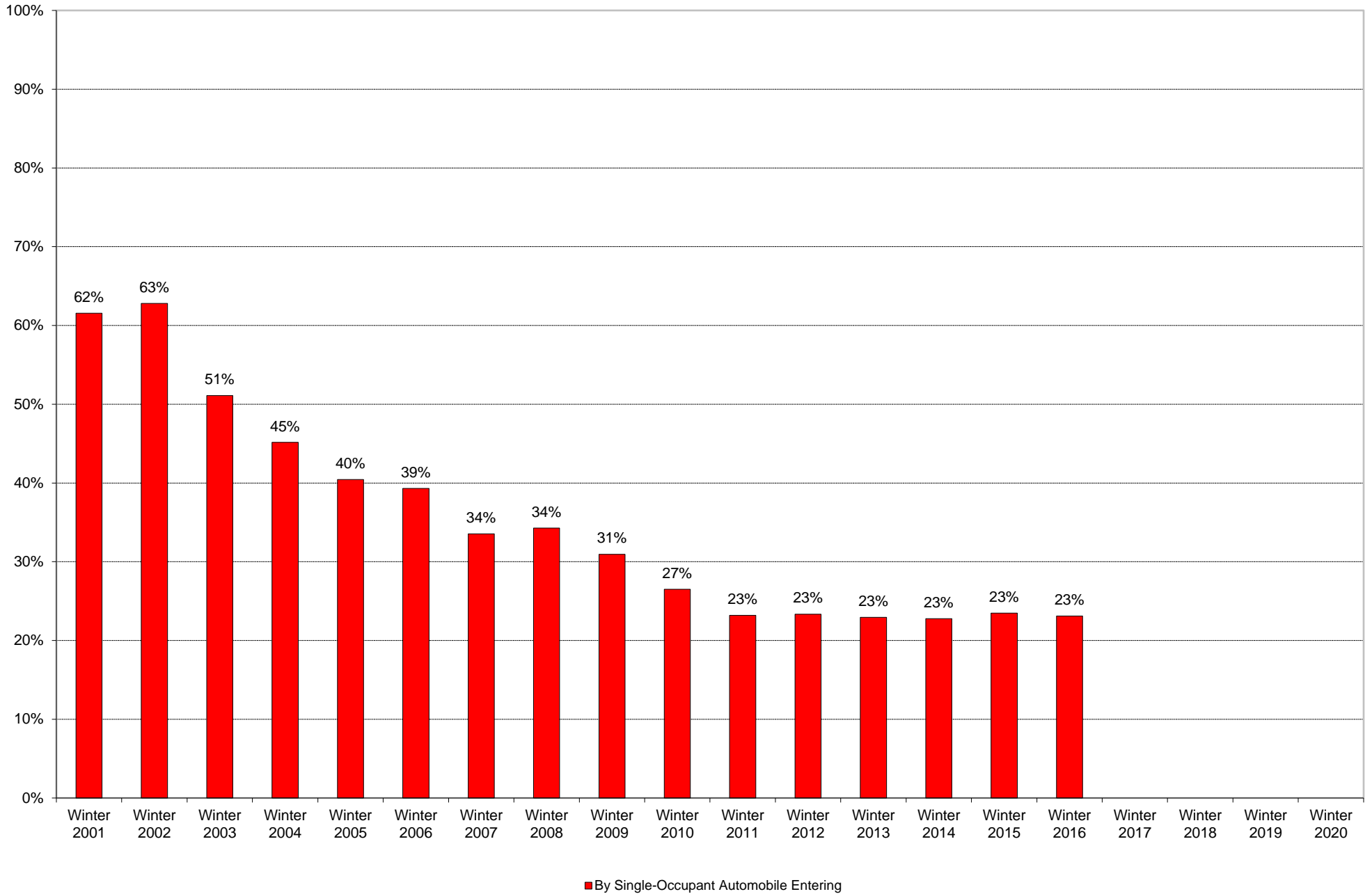
■ By Other Entering

University of California, San Diego Survey of Pedestrian and Vehicular Traffic  
 Commuters Entering on Typical Weekday  
 At Gilman Drive: By Other

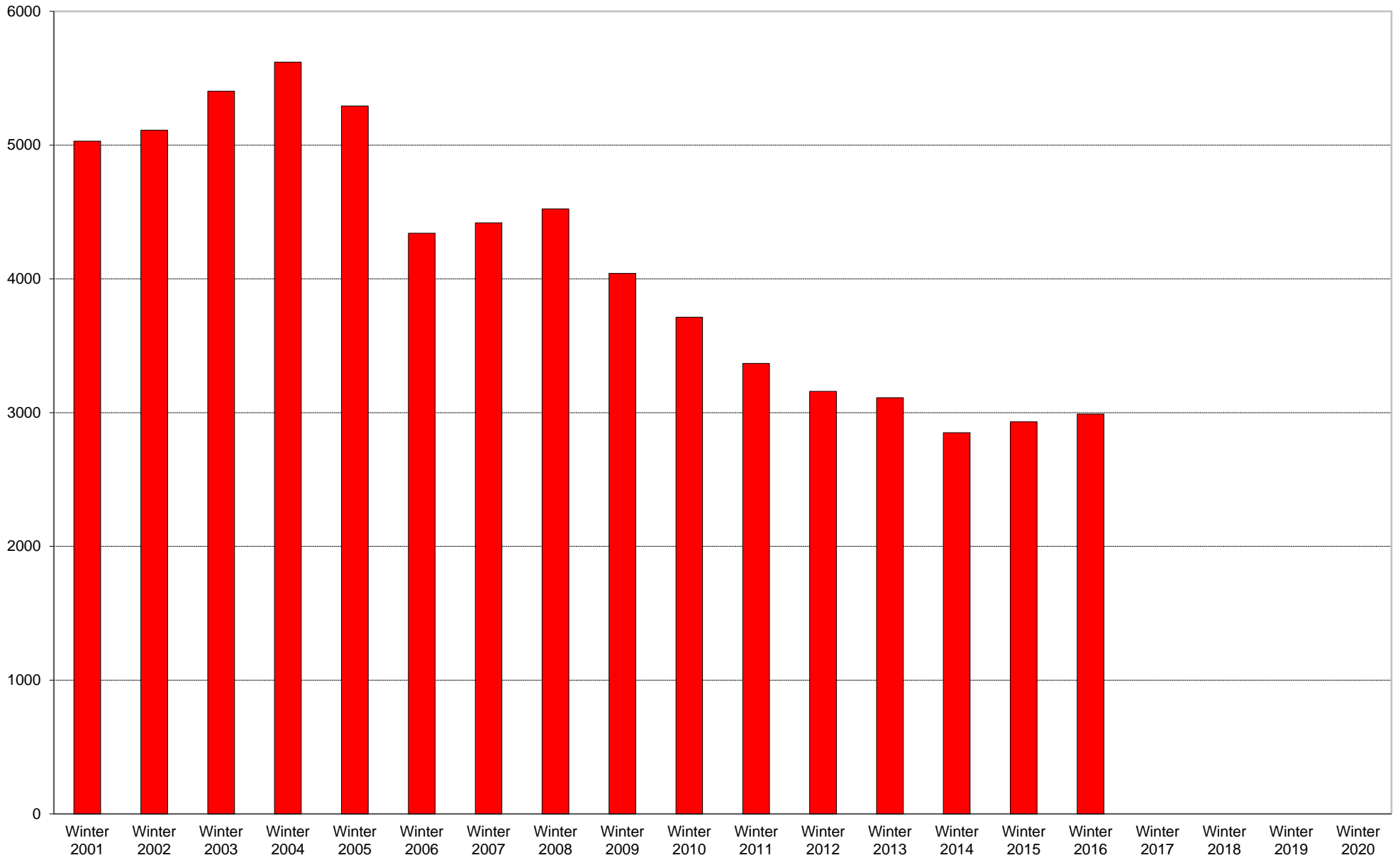
	6am to 7am	7am to 8am	8am to 9am	9am to 10am	10am to 11am	11am to 12pm	12pm to 1pm	1pm to 2pm	2pm to 3pm	3pm to 4pm	4pm to 5pm	5pm to 6pm	6pm to 7pm	7pm to 8pm	8pm to 9pm	9pm to 10pm	Total	Percentage of Total Commuters
Winter 2001	1	170	2	4	4	2	5	2	1	1			1				193	2%
Winter 2002	5	120	7	3	2	4	2	4	4	1	2						154	2%
Winter 2003		182	4	4	1	4	2	2			1						200	2%
Winter 2004	1	192	2	7	2	1	5	1	2		1	2	1				217	2%
Winter 2005	7	145	4	11	4		2	6	4	7	3	3			1		197	2%
Winter 2006	1	179	5	6	3	3	8	5	4	1	2	2	2	1	1		223	2%
Winter 2007	1	202	3	8	3	3	2	4		1	1	4	3			1	236	2%
Winter 2008	5	194	7	13	2	4	1	5	3	5	1	2	1	1	1		245	2%
Winter 2009	2	224	18	5	8	3	3	5	3	6	3	2		1			283	2%
Winter 2010	19	179	9	11	12	3	1	2		1		3	5		1		246	2%
Winter 2011	20	175	6	10	8	4	4	1	2	2	2		2			2	238	2%
Winter 2012	12	178	8	11	6	3	7	2	2	3	2	1	6	1			242	2%
Winter 2013	21	208	11	6	6	3	4	5	3		1	1		2	3		274	2%
Winter 2014	25	202	10	7	5	2	5	4	1	4	1		5				271	2%
Winter 2015	28	187	8	17	6	4	7	5	2	4	2	1	1	3			275	2%
Winter 2016	29	112	7	10	10	4	2	3		2	8	1	2	1	1	1	193	1%
Winter 2017																		
Winter 2018																		
Winter 2019																		
Winter 2020																		

Includes motorcycle and vanpool.

University of California, San Diego Survey of Pedestrian and Vehicular Traffic  
Commuters Entering on Typical Weekday  
At Gilman Drive: By Single-Occupant Automobile: Percentage of Total Commuters



University of California, San Diego Survey of Pedestrian and Vehicular Traffic  
Commuters Entering on Typical Weekday  
At Gilman Drive: By Single-Occupant Automobile: Volumes

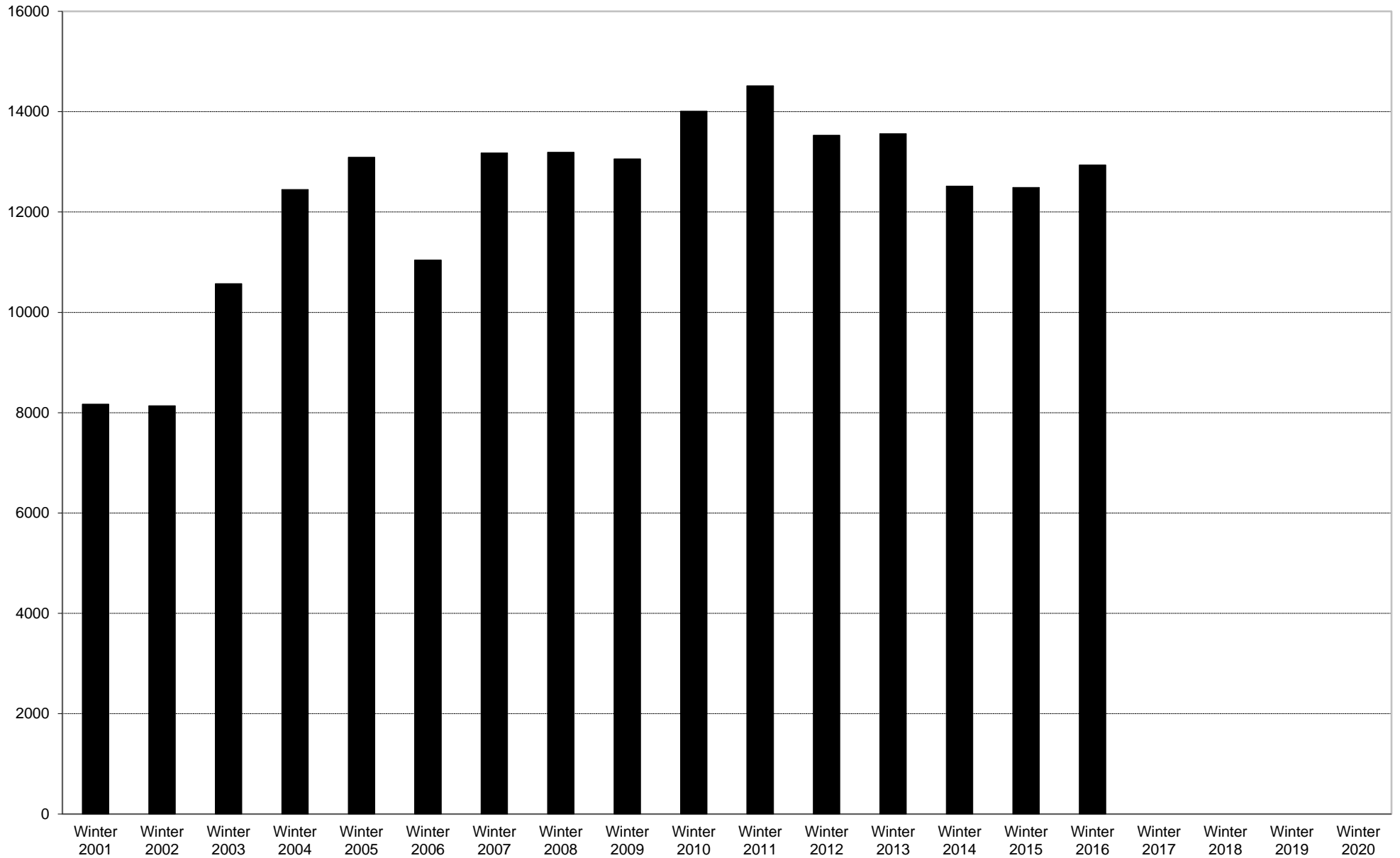


■ By Single-Occupant Automobile Entering





University of California, San Diego Survey of Pedestrian and Vehicular Traffic  
Commuters Entering on Typical Weekday  
At Gilman Drive: Total Commuters: Volumes



■ Total Commuters Entering

