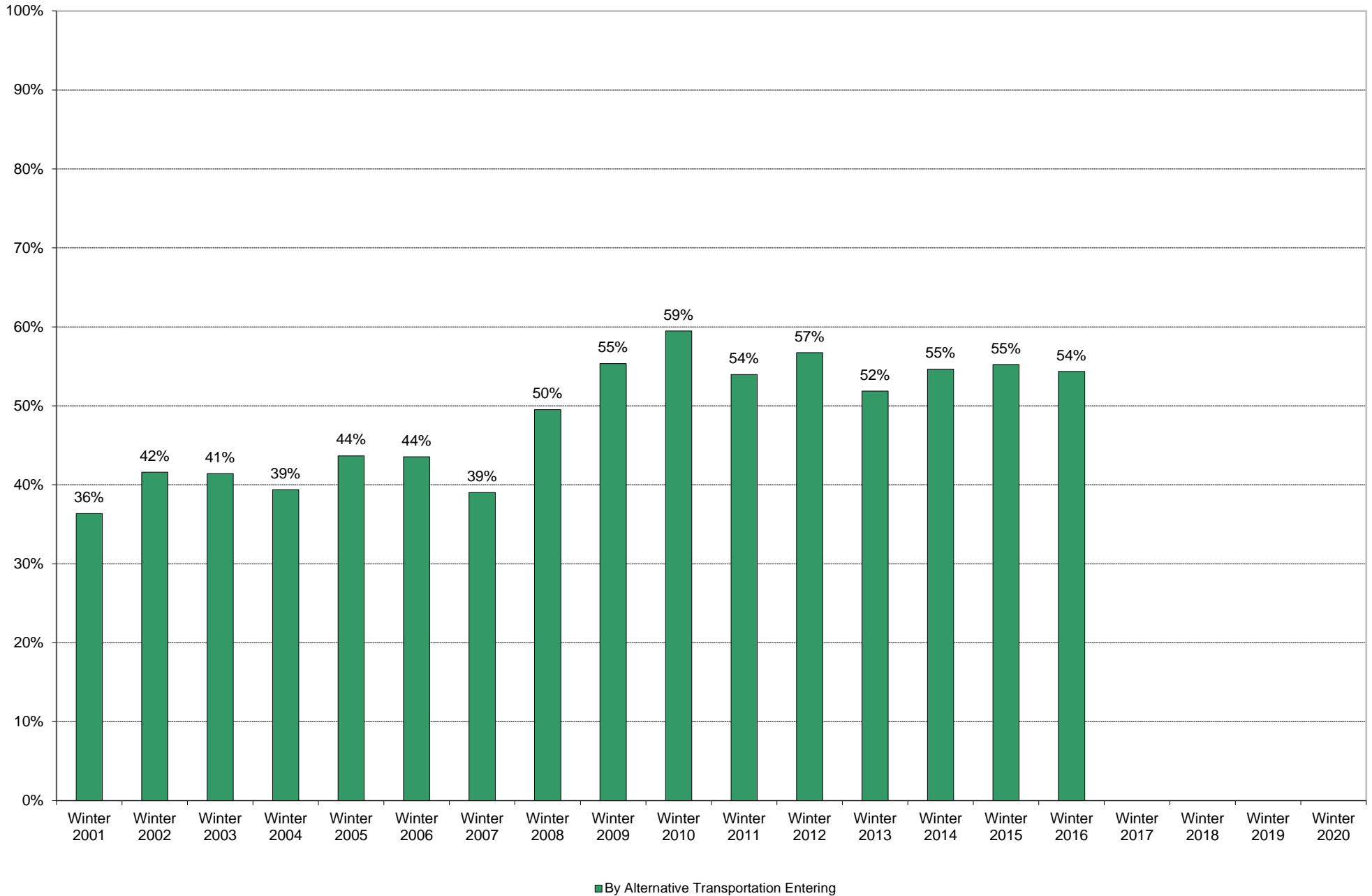
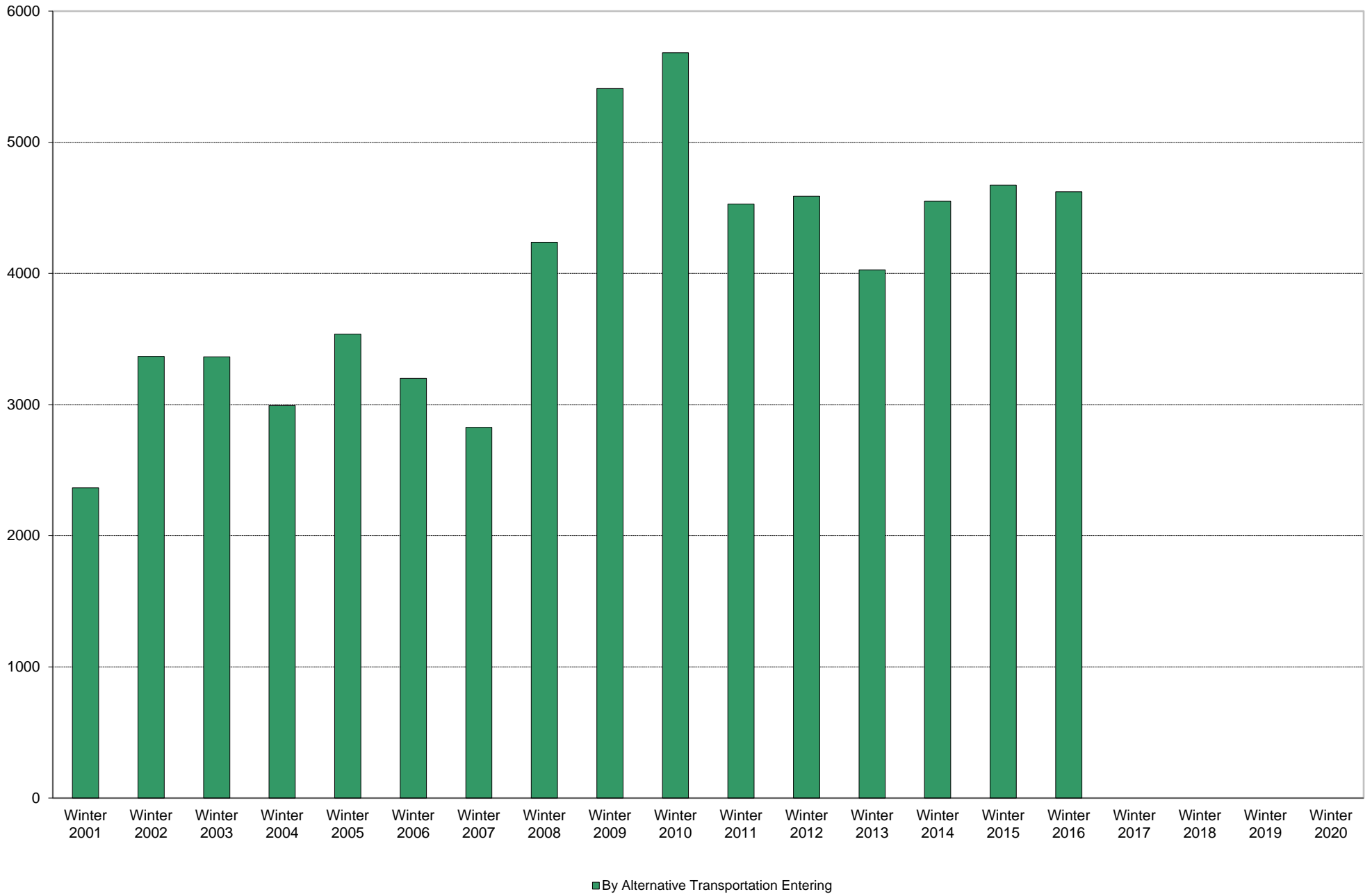


University of California, San Diego Survey of Pedestrian and Vehicular Traffic  
Commuters Entering on Typical Weekday  
At Villa La Jolla Drive: By Alternative Transportation: Percentage of Total Commuters

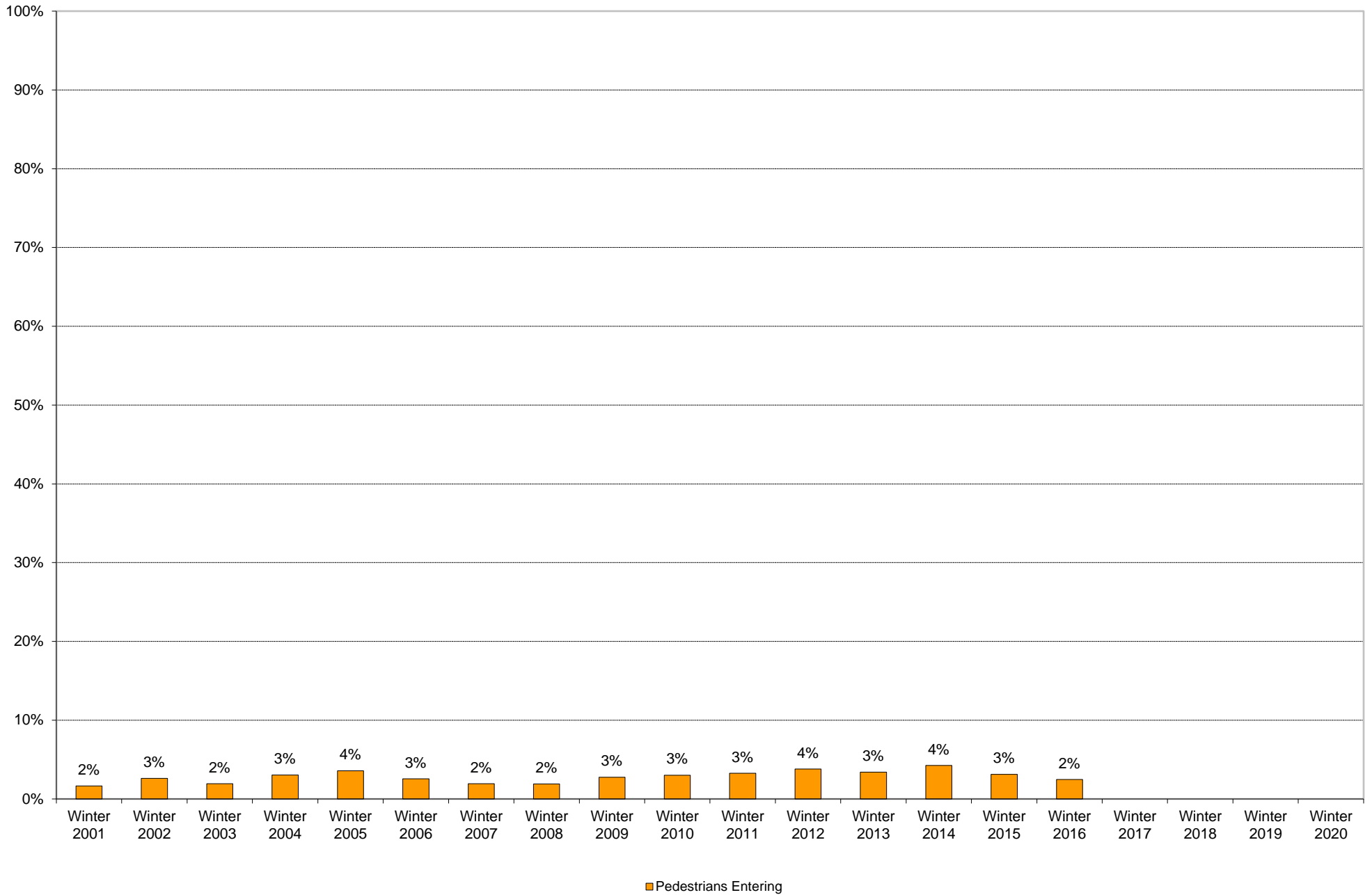


University of California, San Diego Survey of Pedestrian and Vehicular Traffic  
Commuters Entering on Typical Weekday  
At Villa La Jolla Drive: By Alternative Transportation: Volumes

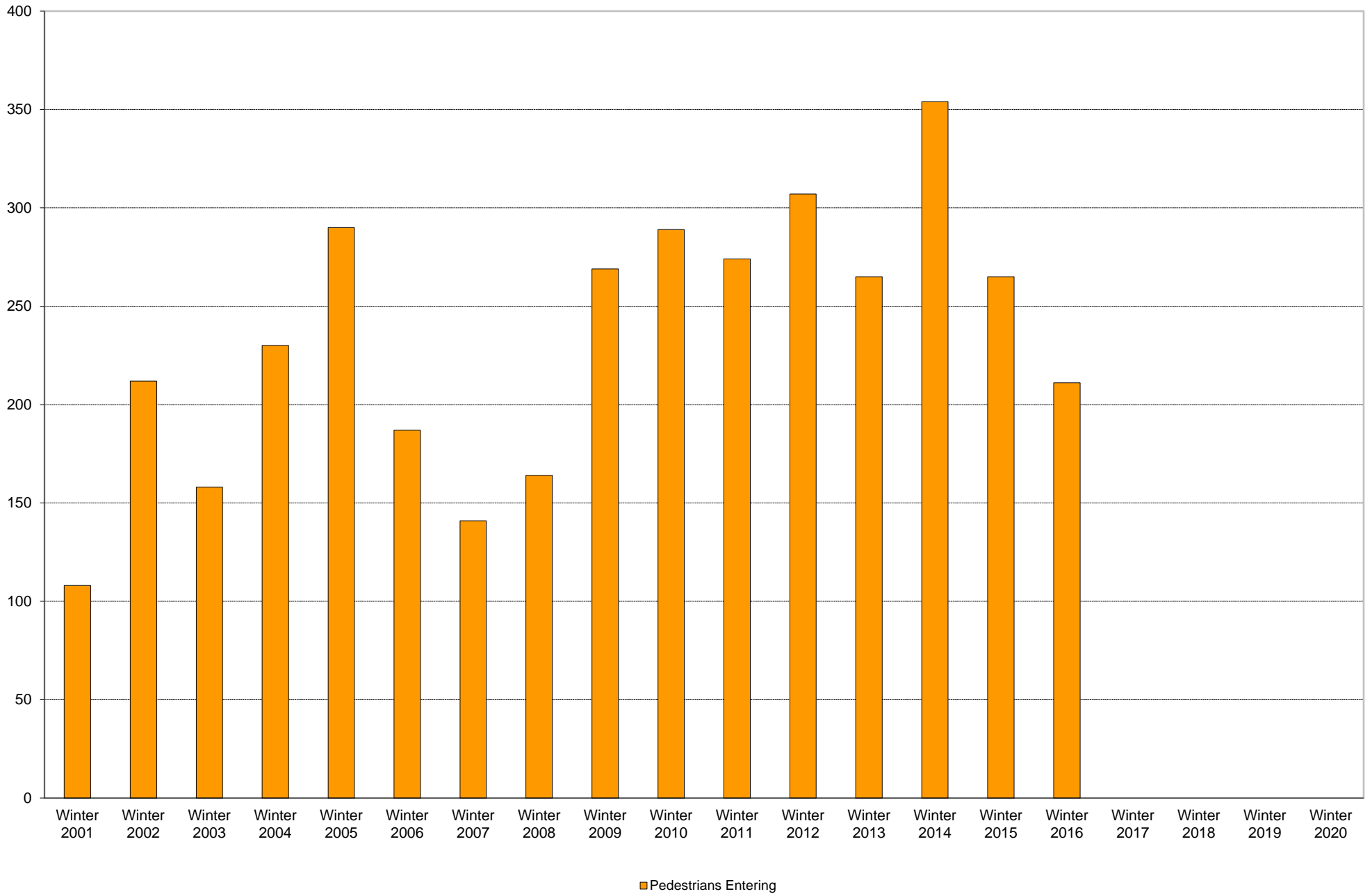




University of California, San Diego Survey of Pedestrian and Vehicular Traffic  
Commuters Entering on Typical Weekday  
At Villa La Jolla Drive: Pedestrians: Percentage of Total Commuters

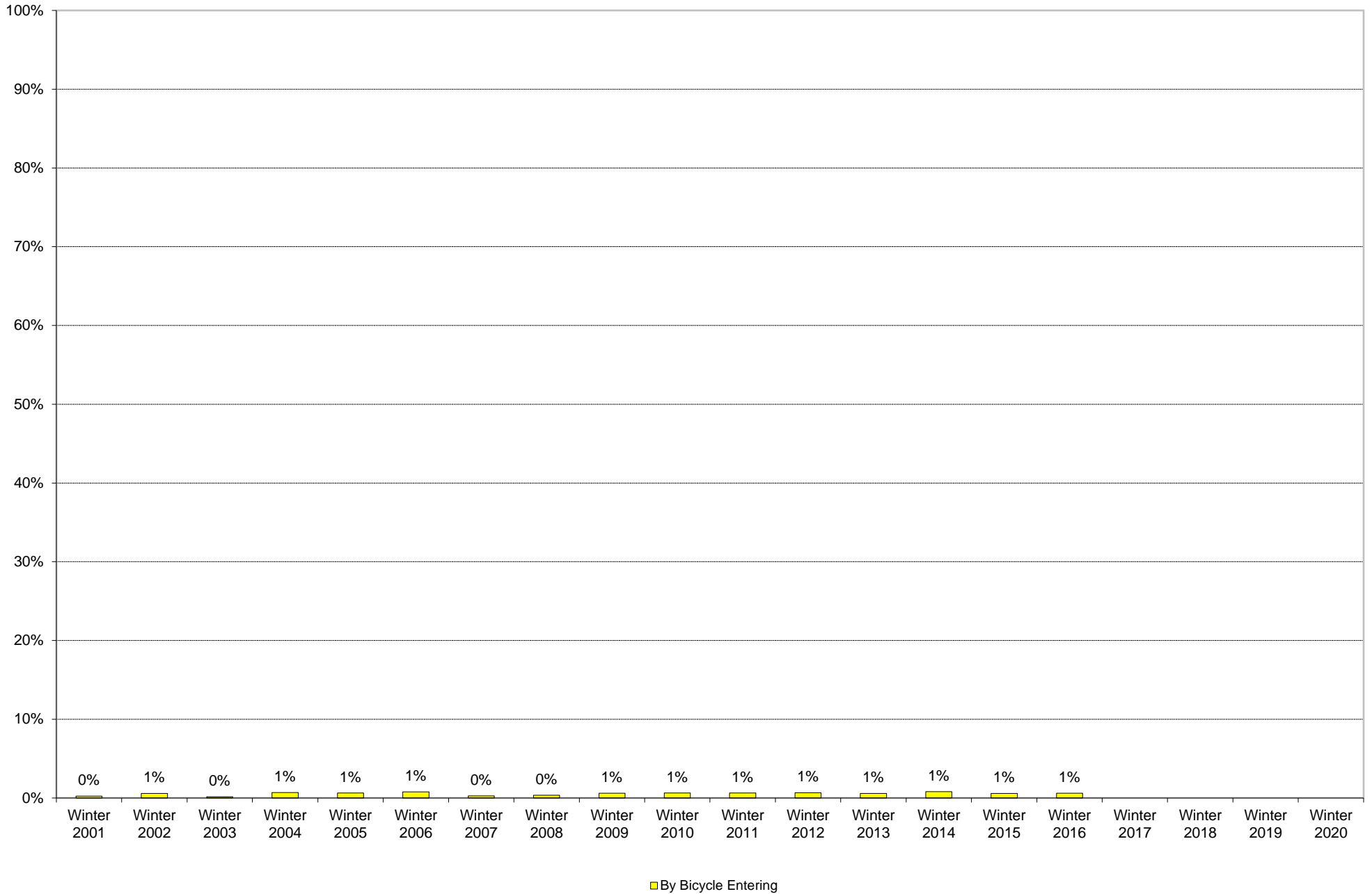


University of California, San Diego Survey of Pedestrian and Vehicular Traffic  
Commuters Entering on Typical Weekday  
At Villa La Jolla Drive: Pedestrians: Volumes

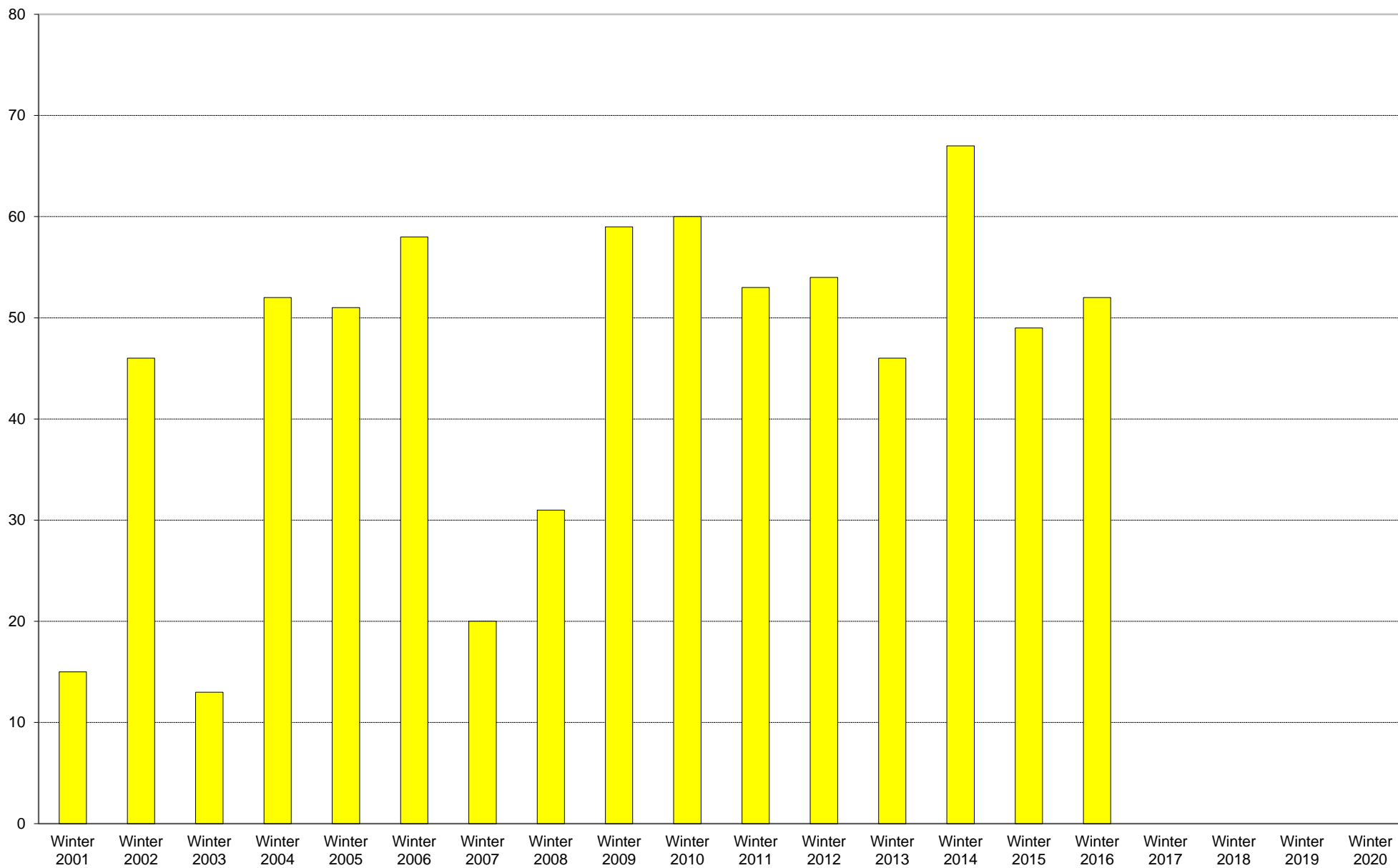




University of California, San Diego Survey of Pedestrian and Vehicular Traffic  
Commuters Entering on Typical Weekday  
At Villa La Jolla Drive: By Bicycle: Percentage of Total Commuters



University of California, San Diego Survey of Pedestrian and Vehicular Traffic  
Commuters Entering on Typical Weekday  
At Villa La Jolla Drive: By Bicycle: Volumes

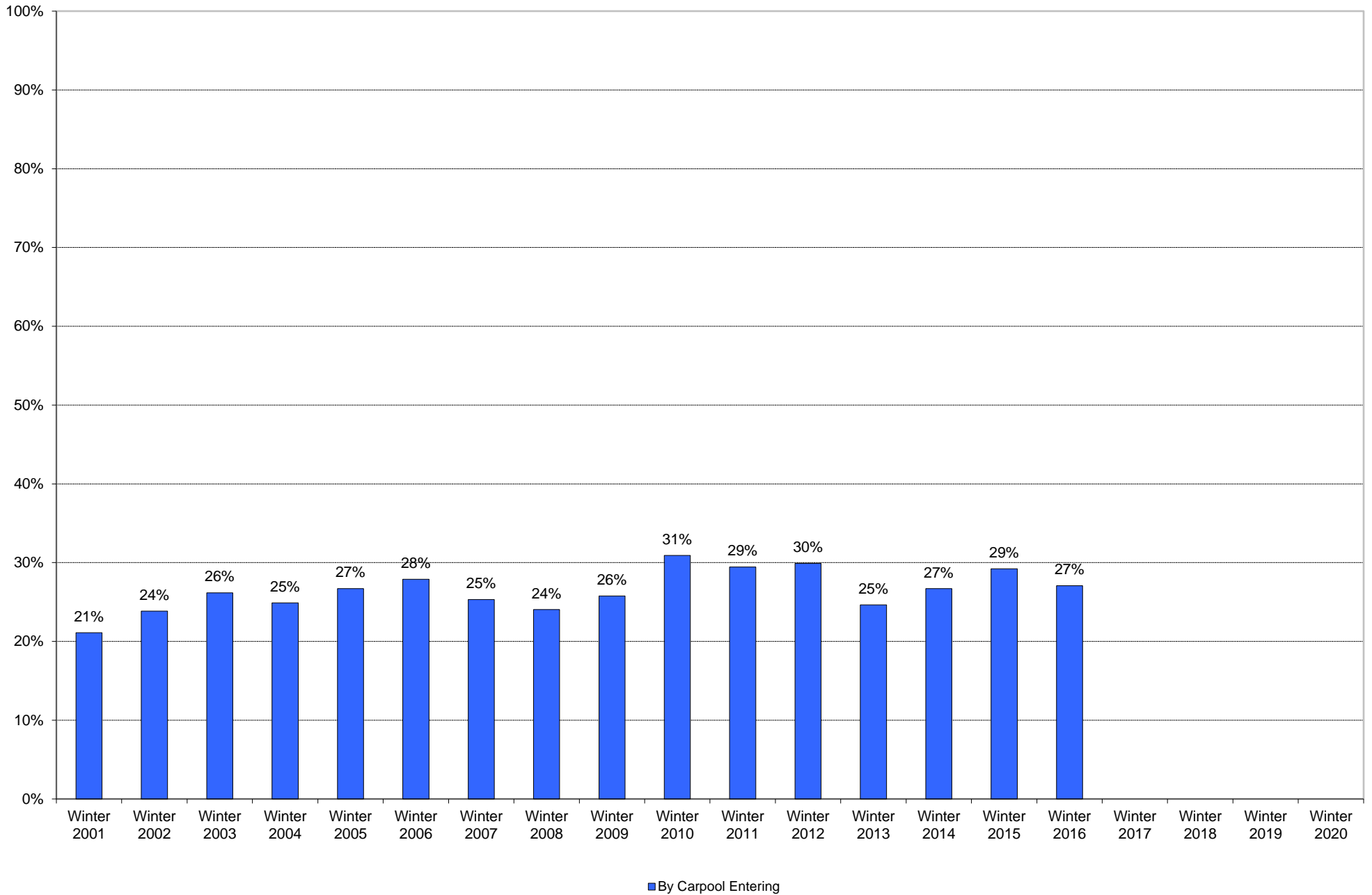


By Bicycle Entering

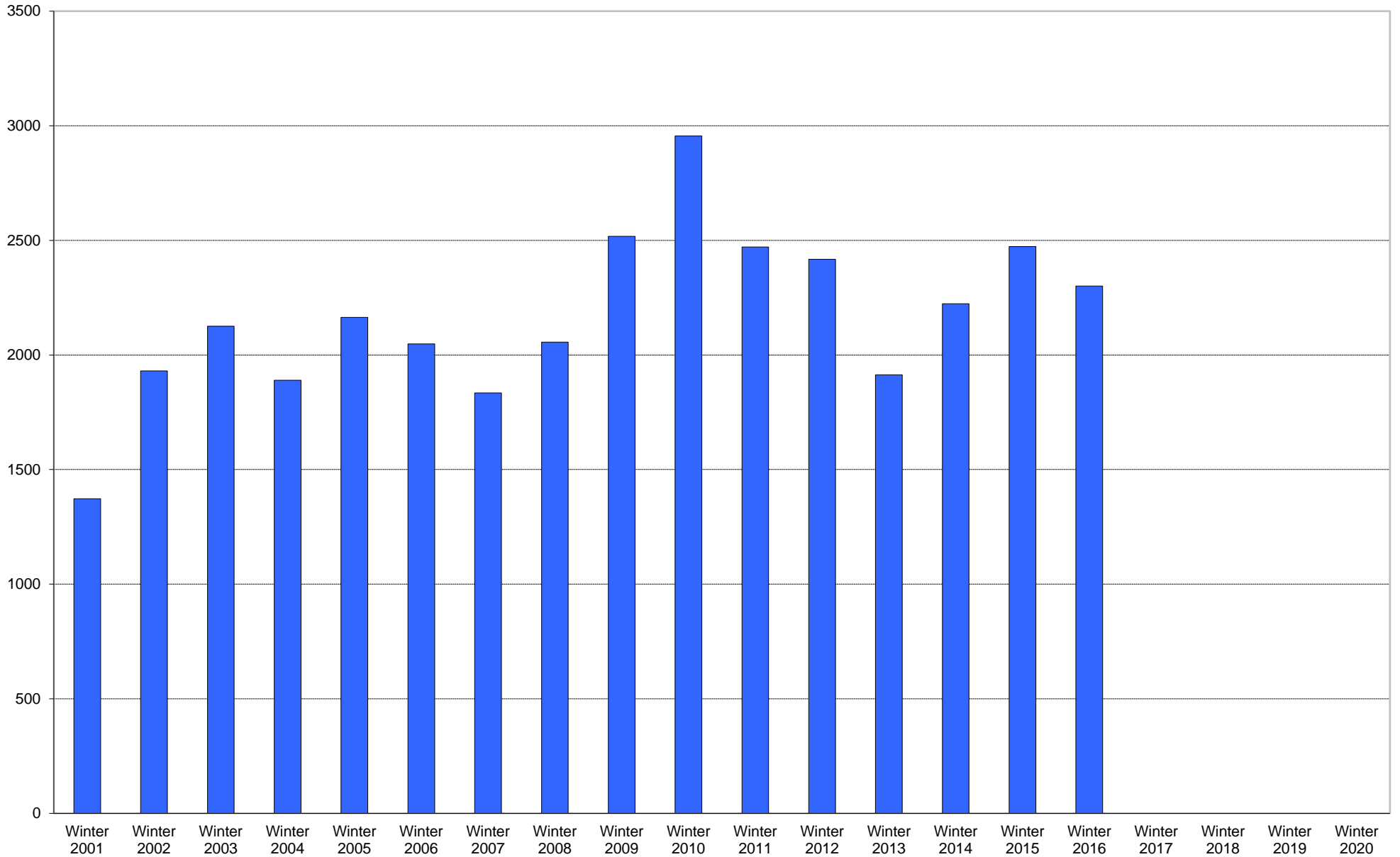




University of California, San Diego Survey of Pedestrian and Vehicular Traffic  
Commuters Entering on Typical Weekday  
At Villa La Jolla Drive: By Carpool: Percentage of Total Commuters



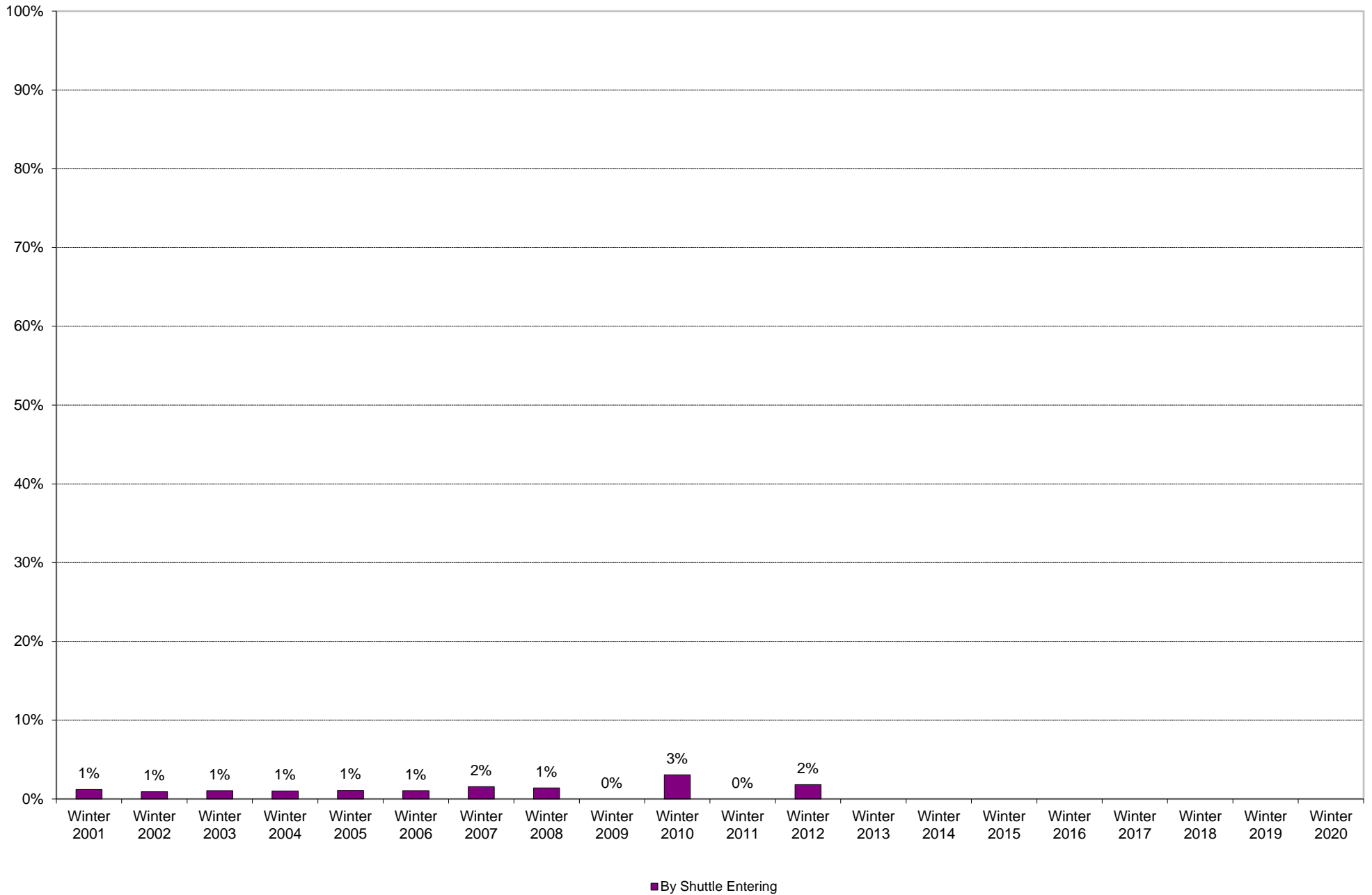
University of California, San Diego Survey of Pedestrian and Vehicular Traffic  
Commuters Entering on Typical Weekday  
At Villa La Jolla Drive: By Carpool: Volumes



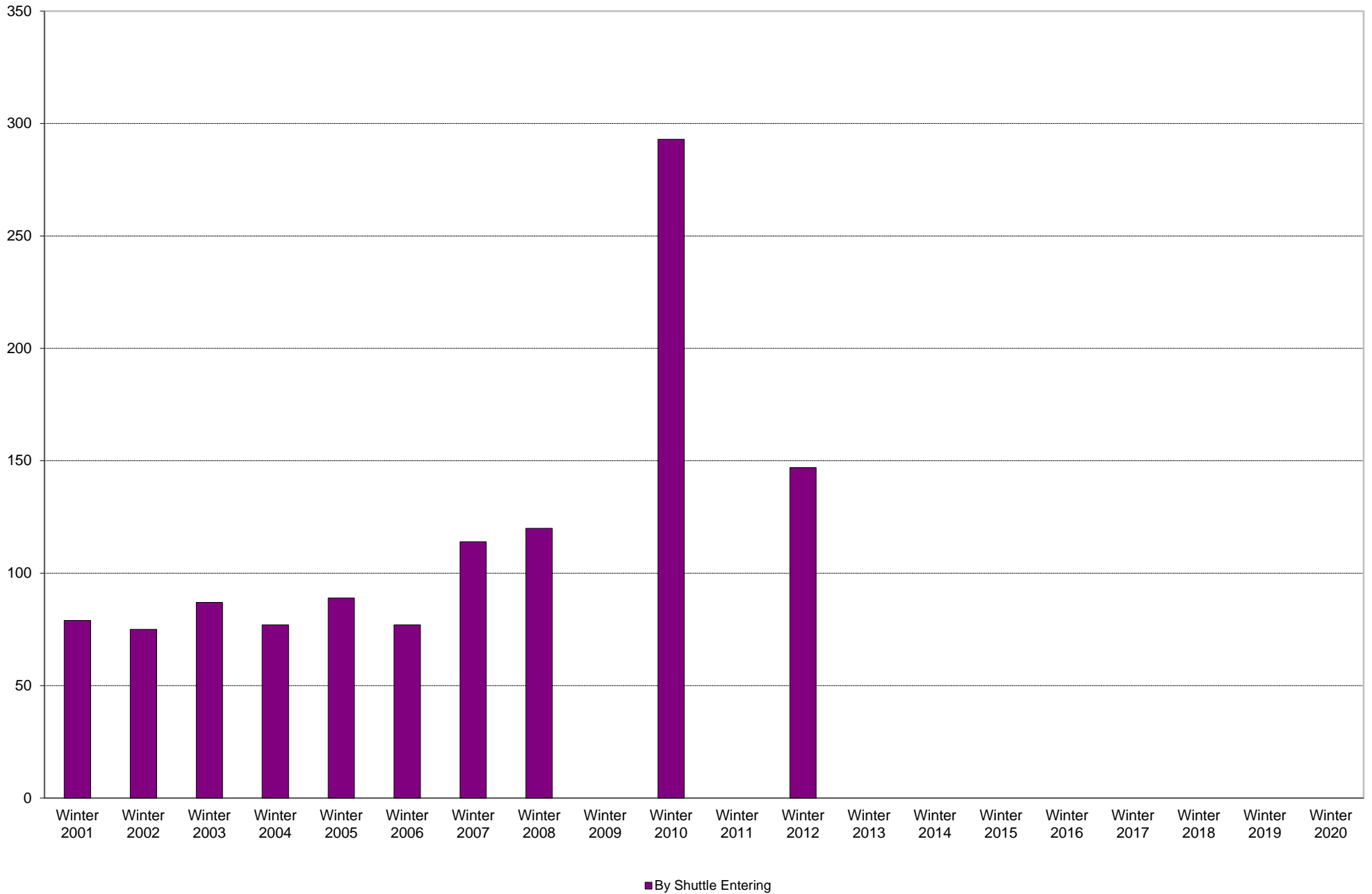
■ By Carpool Entering



University of California, San Diego Survey of Pedestrian and Vehicular Traffic  
Commuters Entering on Typical Weekday  
At Villa La Jolla Drive: By Shuttle: Percentage of Total Commuters

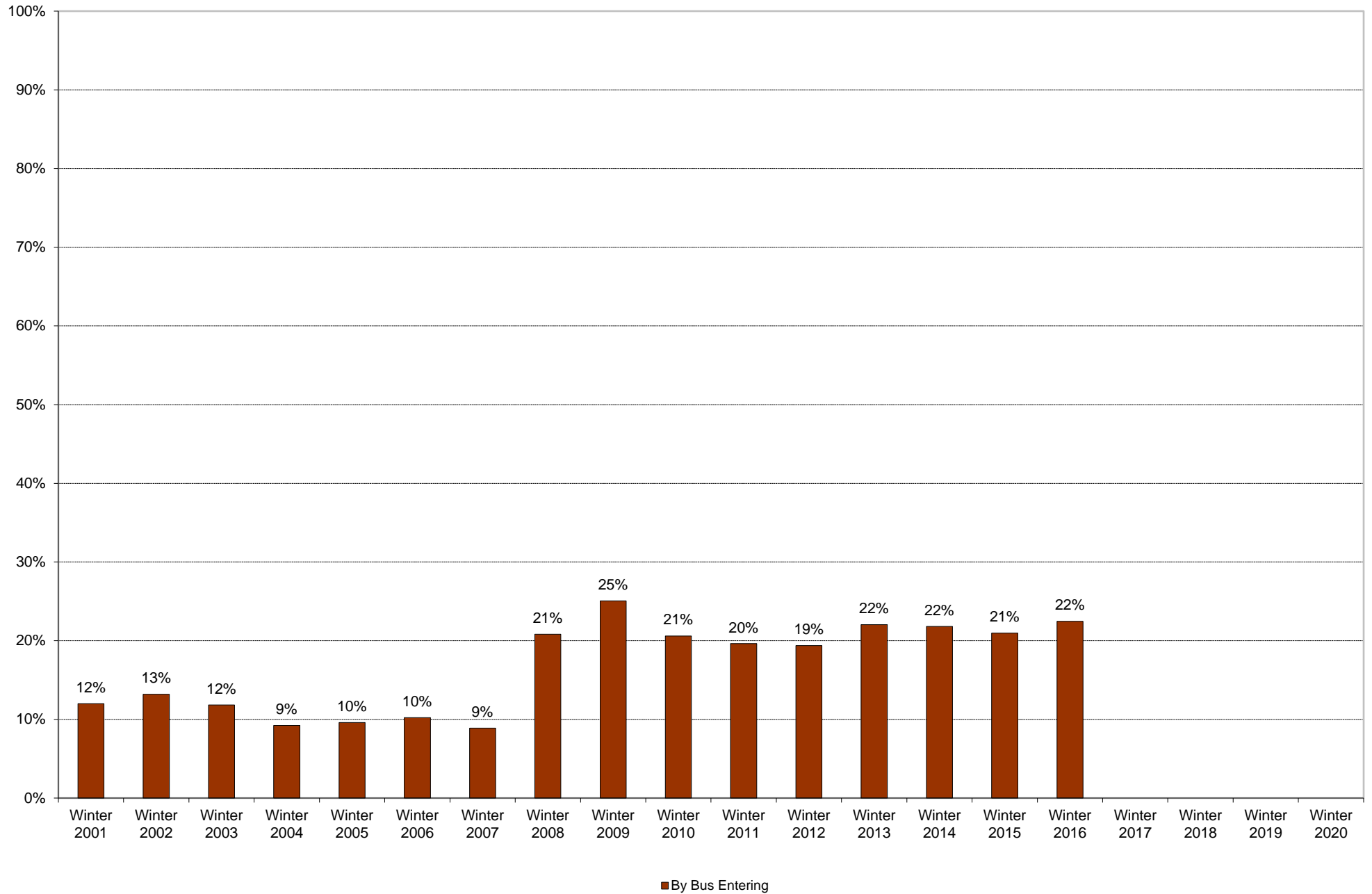


University of California, San Diego Survey of Pedestrian and Vehicular Traffic  
Commuters Entering on Typical Weekday  
At Villa La Jolla Drive: By Shuttle: Volumes



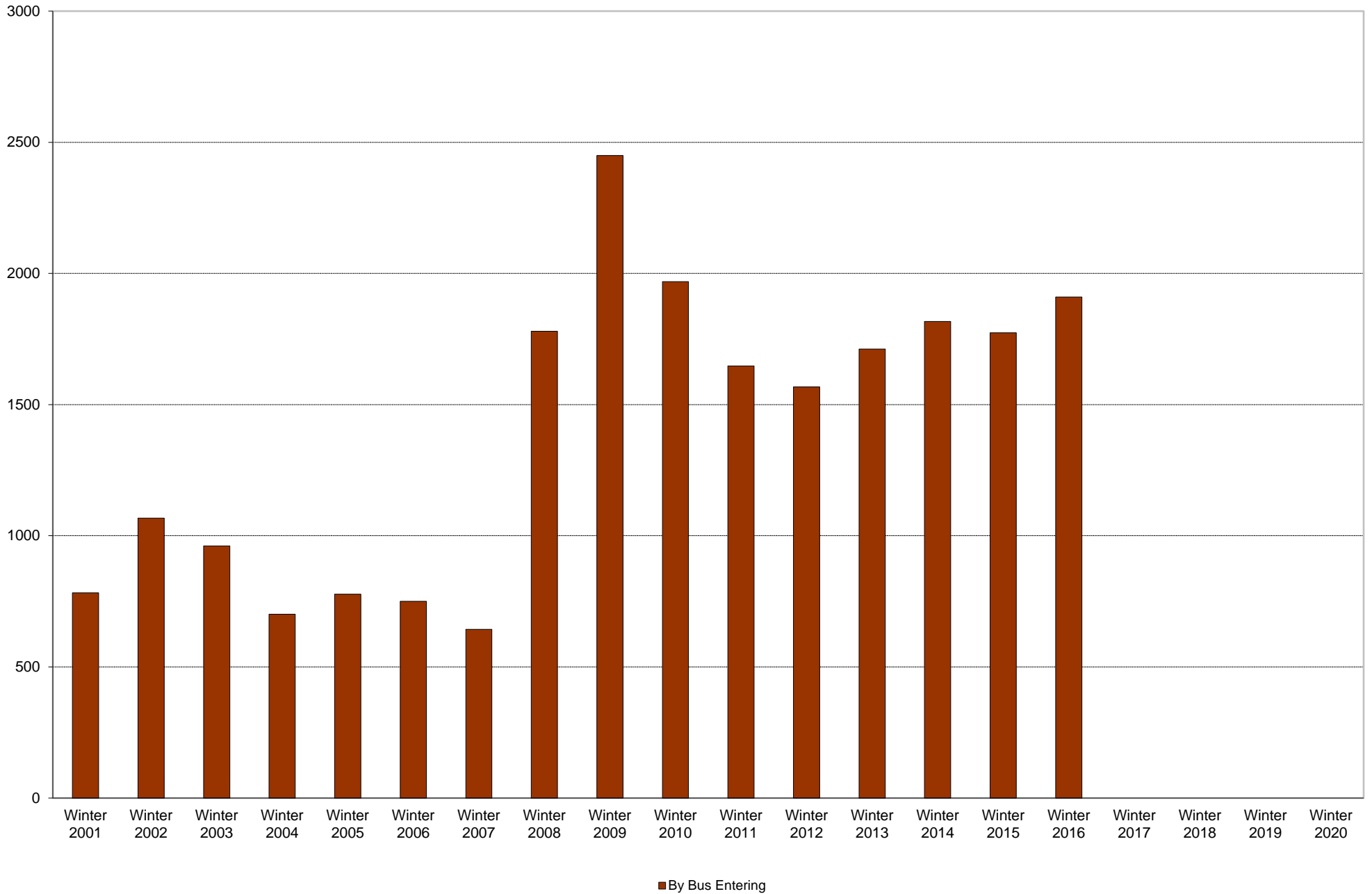


University of California, San Diego Survey of Pedestrian and Vehicular Traffic  
Commuters Entering on Typical Weekday  
At Villa La Jolla Drive: By Bus: Percentage of Total Commuters



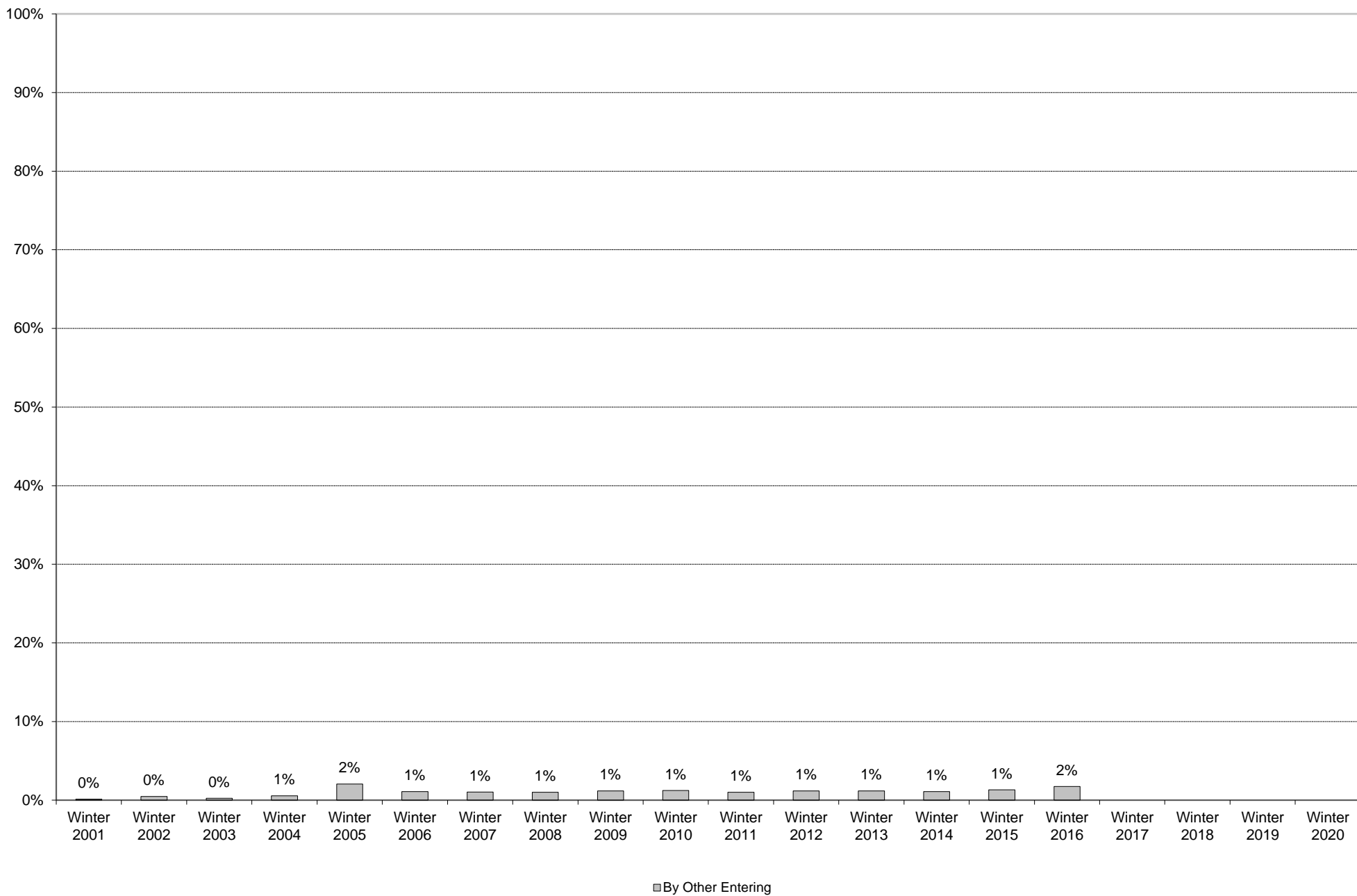


University of California, San Diego Survey of Pedestrian and Vehicular Traffic  
Commuters Entering on Typical Weekday  
At Villa La Jolla Drive: By Bus: Volumes

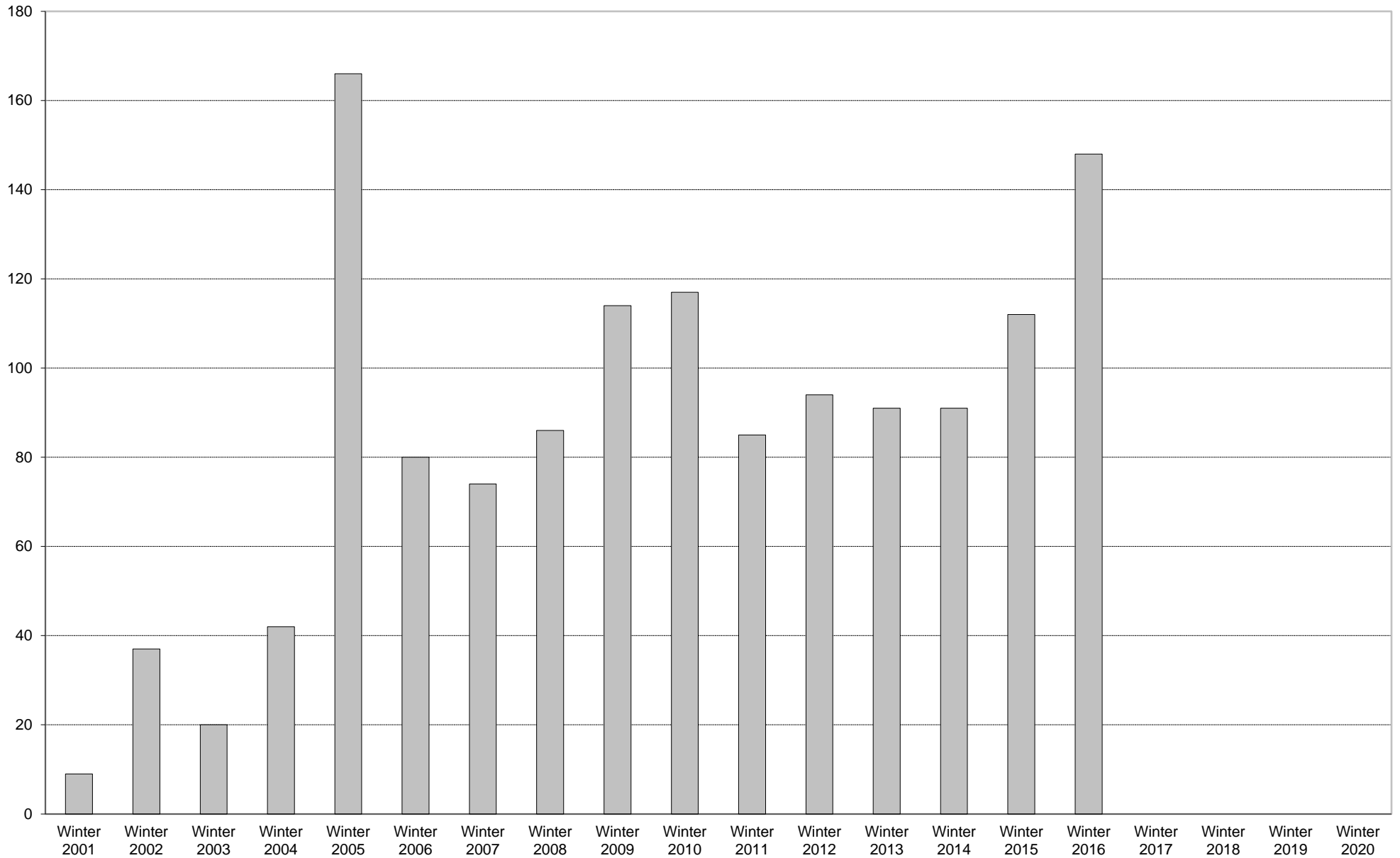




University of California, San Diego Survey of Pedestrian and Vehicular Traffic  
Commuters Entering on Typical Weekday  
At Villa La Jolla Drive: By Other: Percentage of Total Commuters



University of California, San Diego Survey of Pedestrian and Vehicular Traffic  
Commuters Entering on Typical Weekday  
At Villa La Jolla Drive: By Other: Volumes



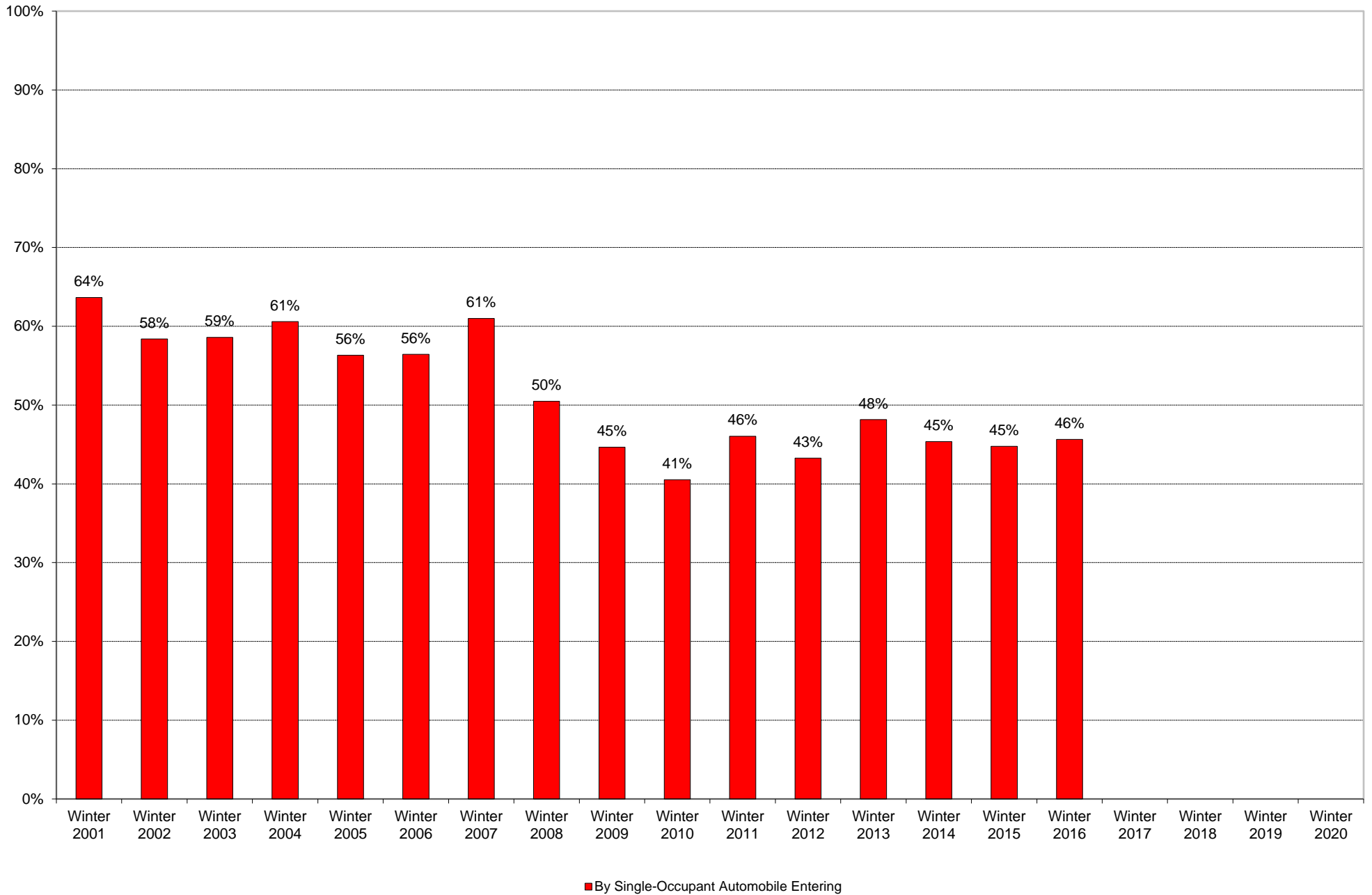
■ By Other Entering

University of California, San Diego Survey of Pedestrian and Vehicular Traffic  
 Commuters Entering on Typical Weekday  
 At Villa La Jolla Drive: By Other

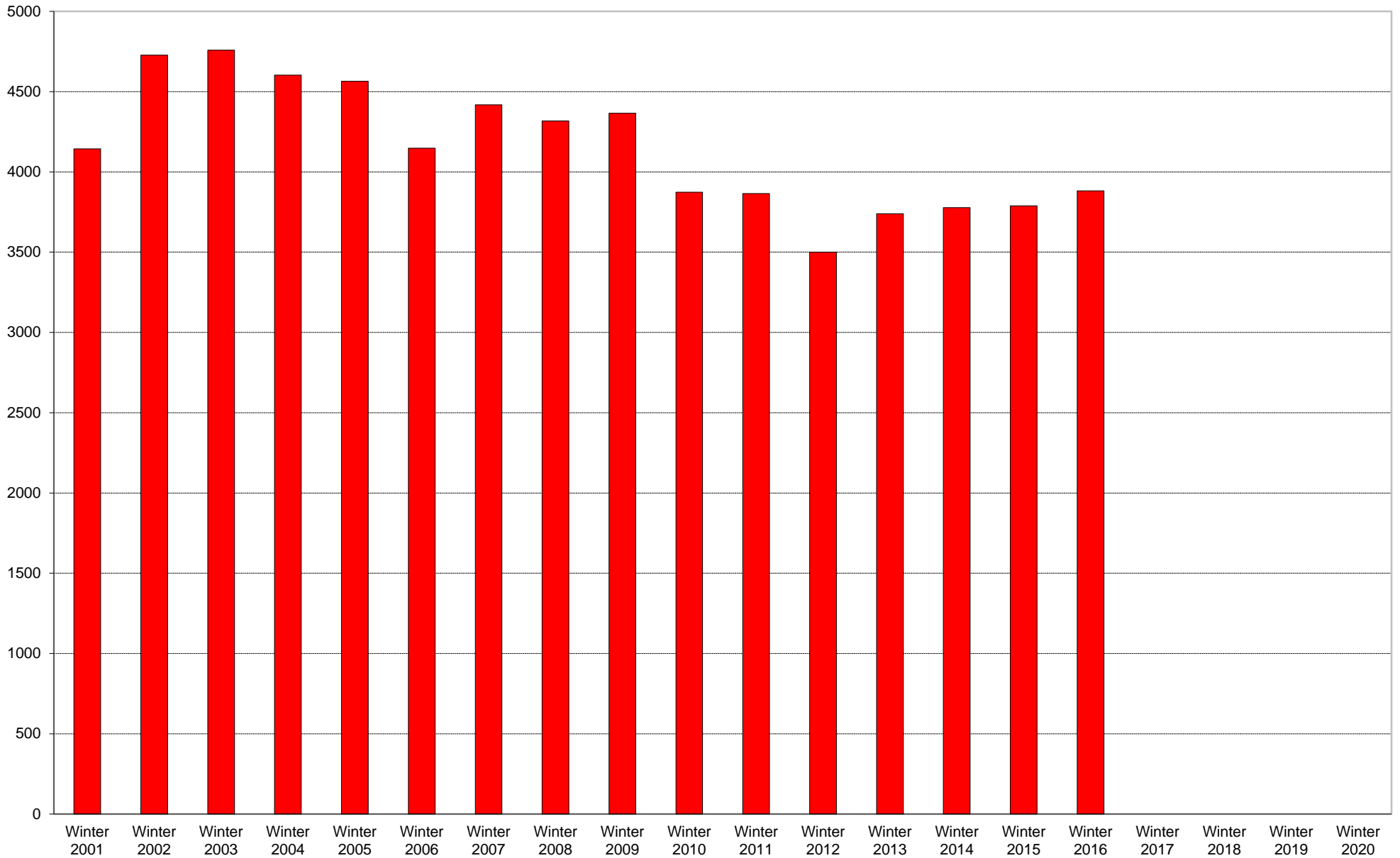
	6am to 7am	7am to 8am	8am to 9am	9am to 10am	10am to 11am	11am to 12pm	12pm to 1pm	1pm to 2pm	2pm to 3pm	3pm to 4pm	4pm to 5pm	5pm to 6pm	6pm to 7pm	7pm to 8pm	8pm to 9pm	9pm to 10pm	Total	Percentage of Total Commuters
Winter 2001			2	3	1				1					1	1		9	0%
Winter 2002	1	5	2	7	3	5	3	1	1	3	4		2				37	0%
Winter 2003		10		4	2			2		1	1						20	0%
Winter 2004		16	5	5	4	1	3	3		2		1		1		1	42	1%
Winter 2005	2	125	10	3	5	2	3	5	3	4	3			1			166	2%
Winter 2006	1	52	2	3	2	2	3	5	2	2	1	1	3	1			80	1%
Winter 2007	3	49	2	1	1	3	3	1	3	3	1		3			1	74	1%
Winter 2008		45	6	6	10	5	2	4	2	3		2			1		86	1%
Winter 2009		53	6	10	7	10	9	3	2	6	3	3		2			114	1%
Winter 2010		56	15	7	8	3	6	3	2	5	3	2	3	2	2		117	1%
Winter 2011	1	38	2	9	6	5	6	6	2	2	2	2	4				85	1%
Winter 2012	7	32	3	8	7	8	8	5	5	5	3	1		1		1	94	1%
Winter 2013	6	35	6	11	3	3	11	6	3	2	1	2			1	1	91	1%
Winter 2014	6	31	6	13	10	3	2	5		5	5	1	1	2	1		91	1%
Winter 2015	7	38	7	17	9	1	9	2	6	6	1		4	2	2	1	112	1%
Winter 2016	6	78	8	18	6	3	5	8	7	1	2	2	3	1			148	2%
Winter 2017																		
Winter 2018																		
Winter 2019																		
Winter 2020																		

Includes motorcycle and vanpool.

University of California, San Diego Survey of Pedestrian and Vehicular Traffic  
Commuters Entering on Typical Weekday  
At Villa La Jolla Drive: By Single-Occupant Automobile: Percentage of Total Commuters



University of California, San Diego Survey of Pedestrian and Vehicular Traffic  
Commuters Entering on Typical Weekday  
At Villa La Jolla Drive: By Single-Occupant Automobile: Volumes

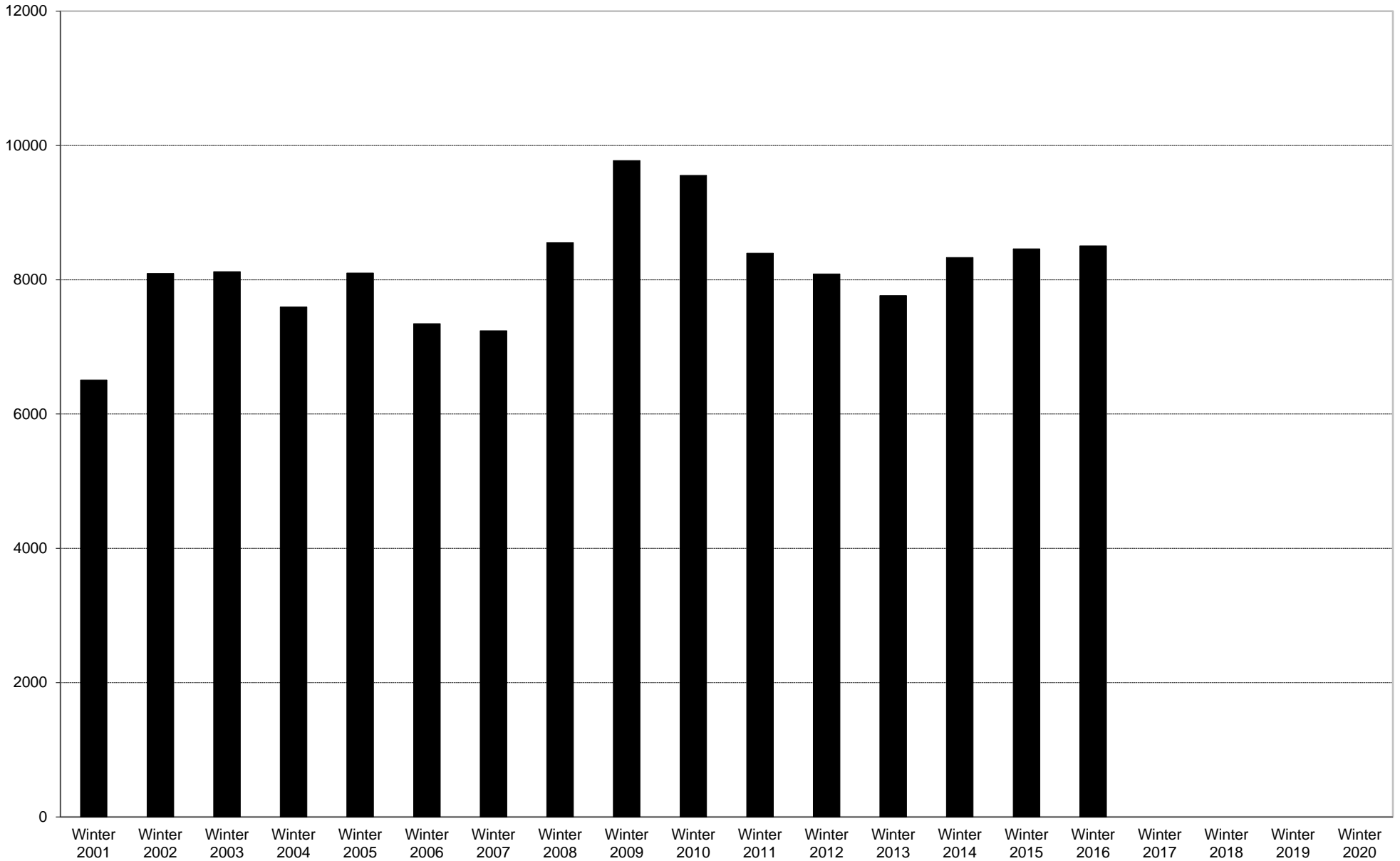


■ By Single-Occupant Automobile Entering





University of California, San Diego Survey of Pedestrian and Vehicular Traffic  
Commuters Entering on Typical Weekday  
At Villa La Jolla Drive: Total Commuters: Volumes



■ Total Commuters Entering

