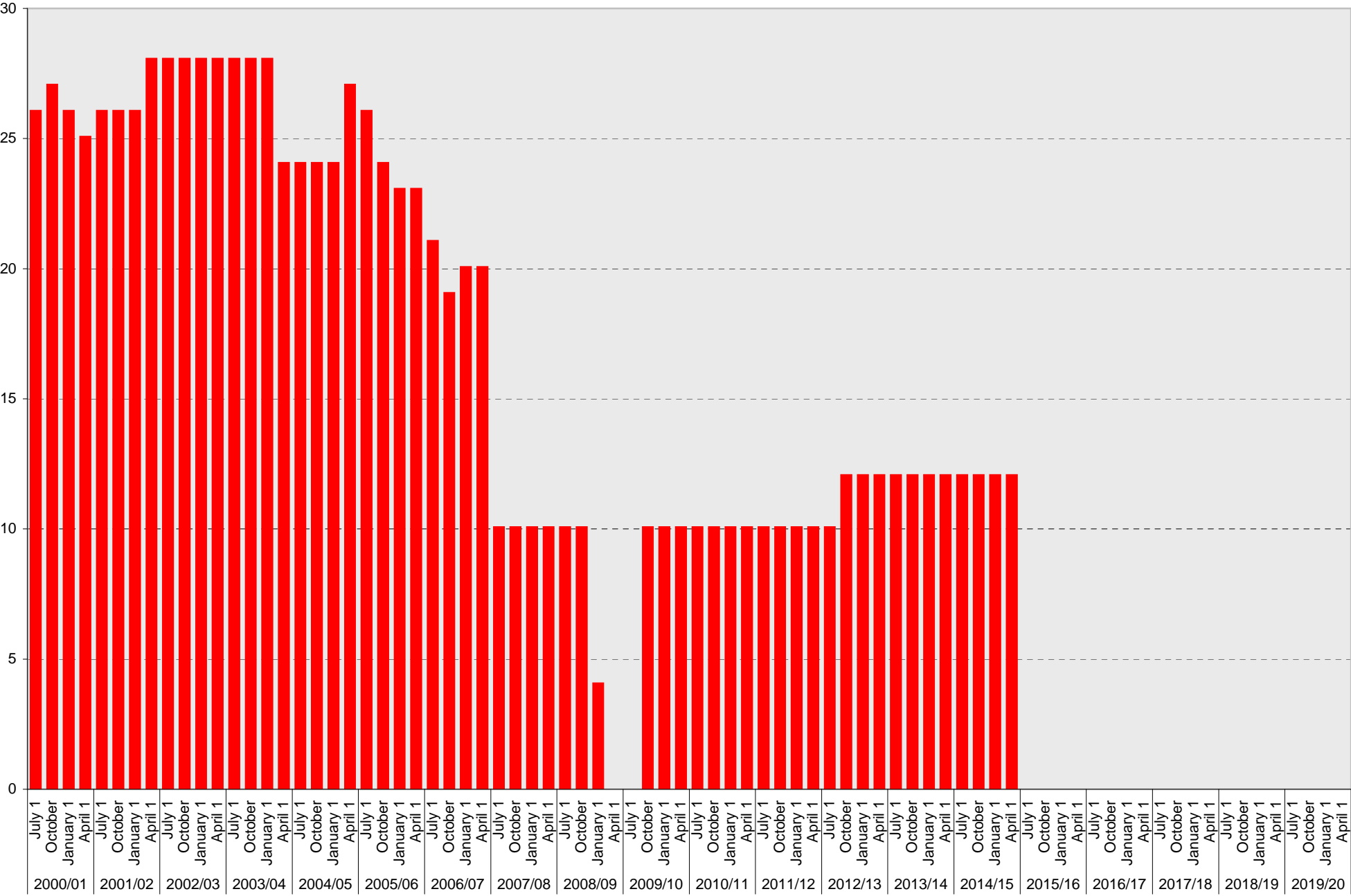


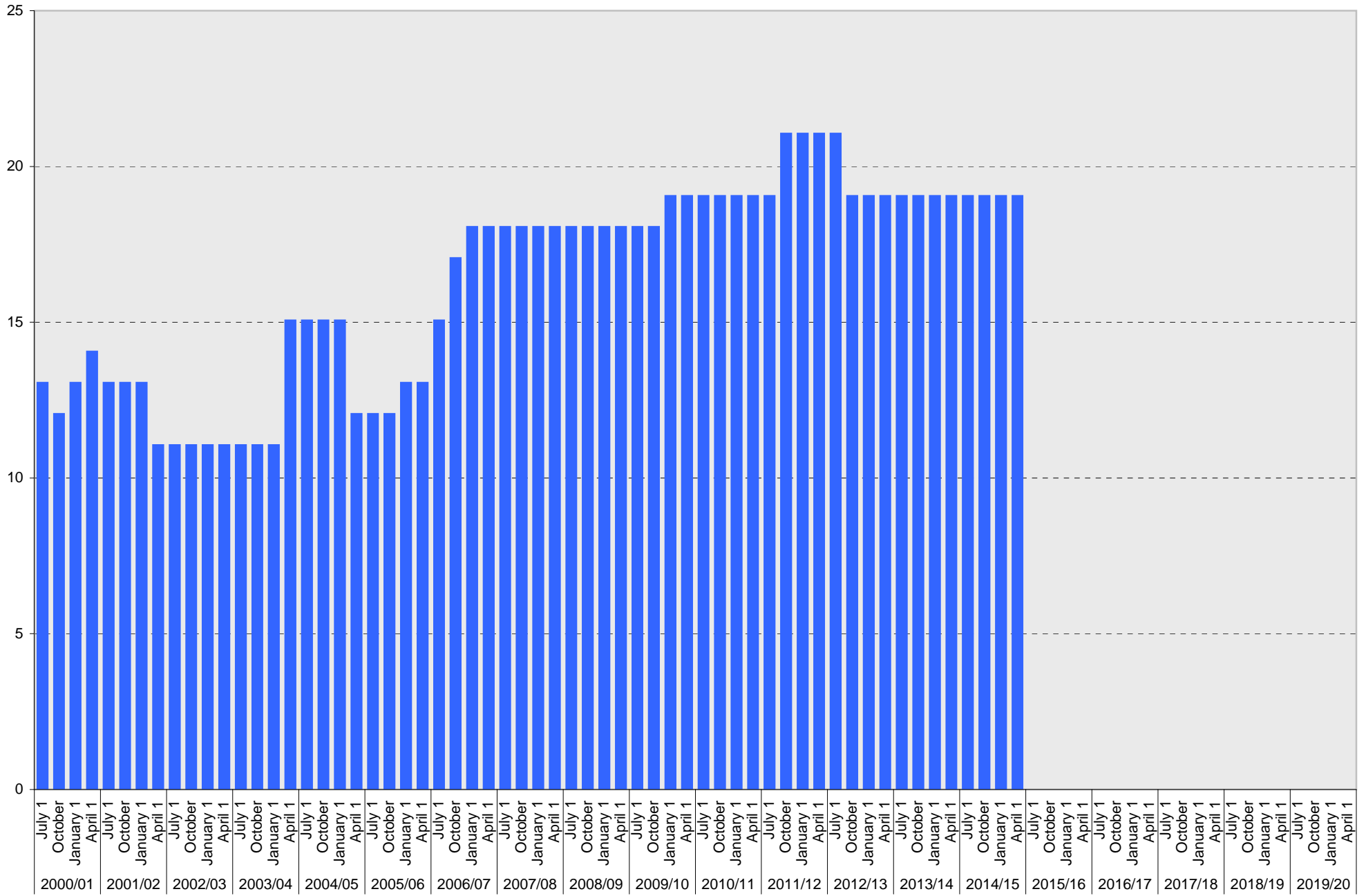
# University of California, San Diego Parking Space Inventory

## Lot P909: A Parking Spaces



# University of California, San Diego Parking Space Inventory

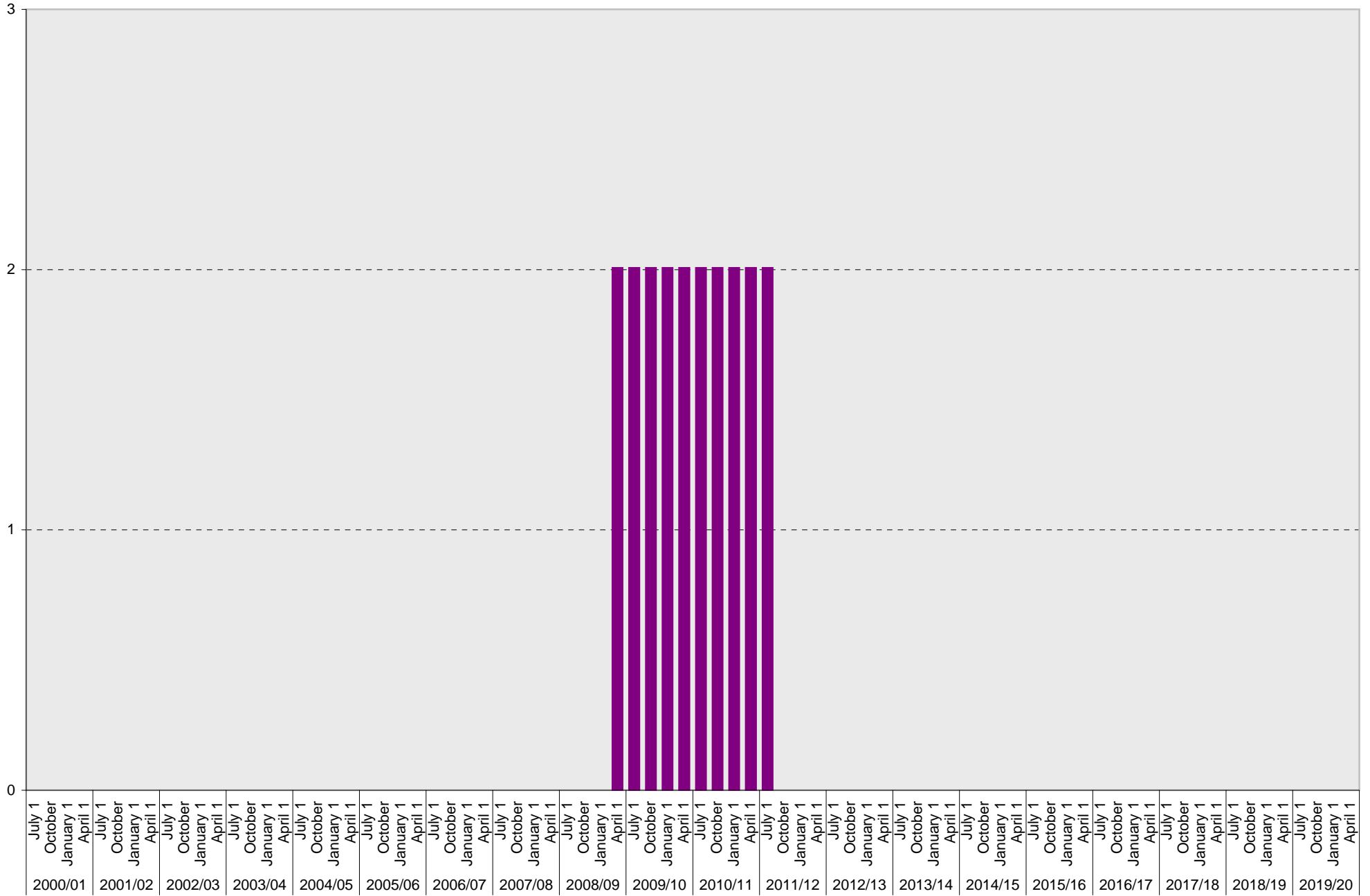
## Lot P909: Reserved Parking Spaces



■ Reserved

# University of California, San Diego Parking Space Inventory

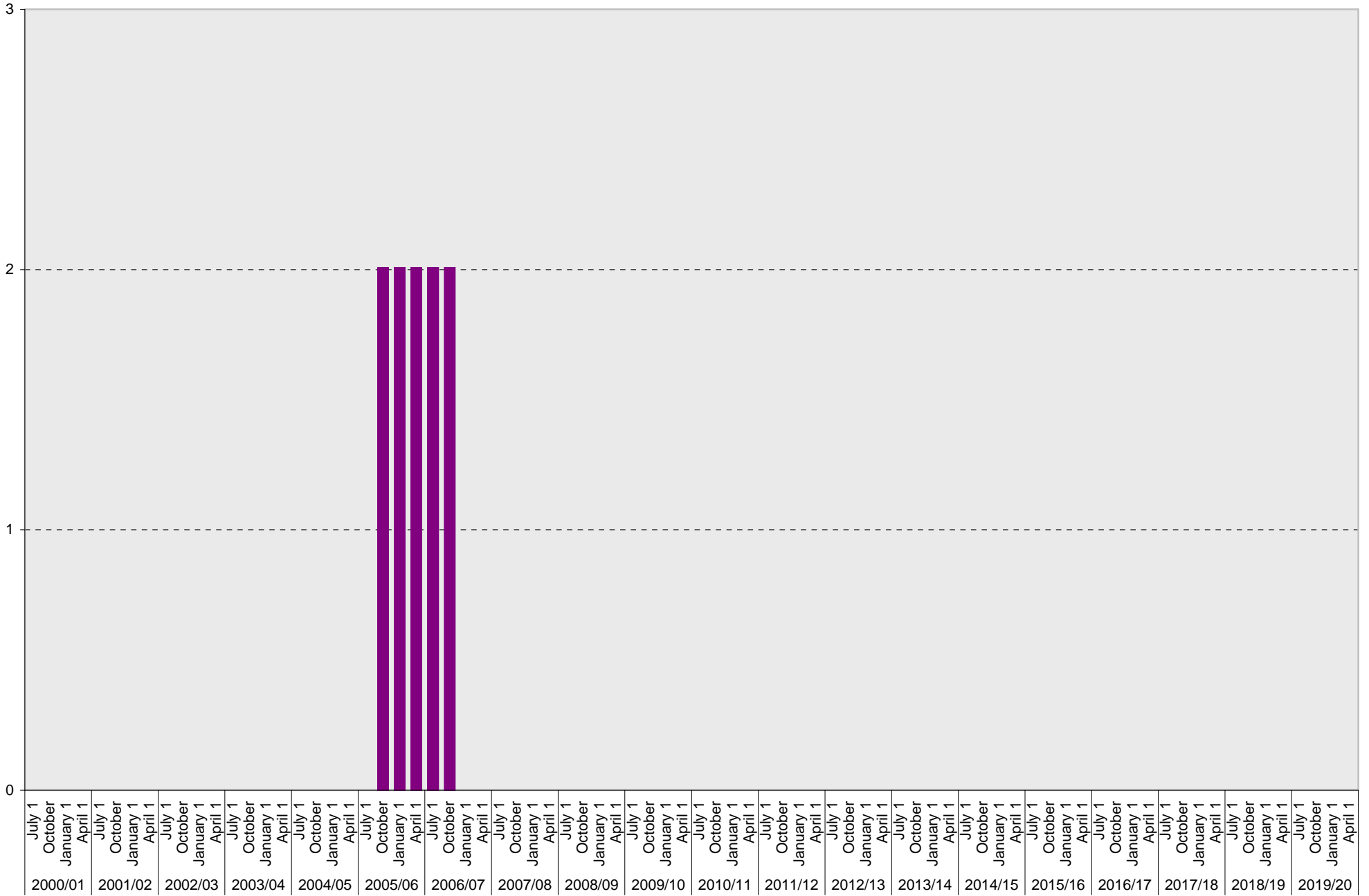
## Lot P909: Allocated: Arbor Parking Office Visitor Parking Spaces



■ Allocated

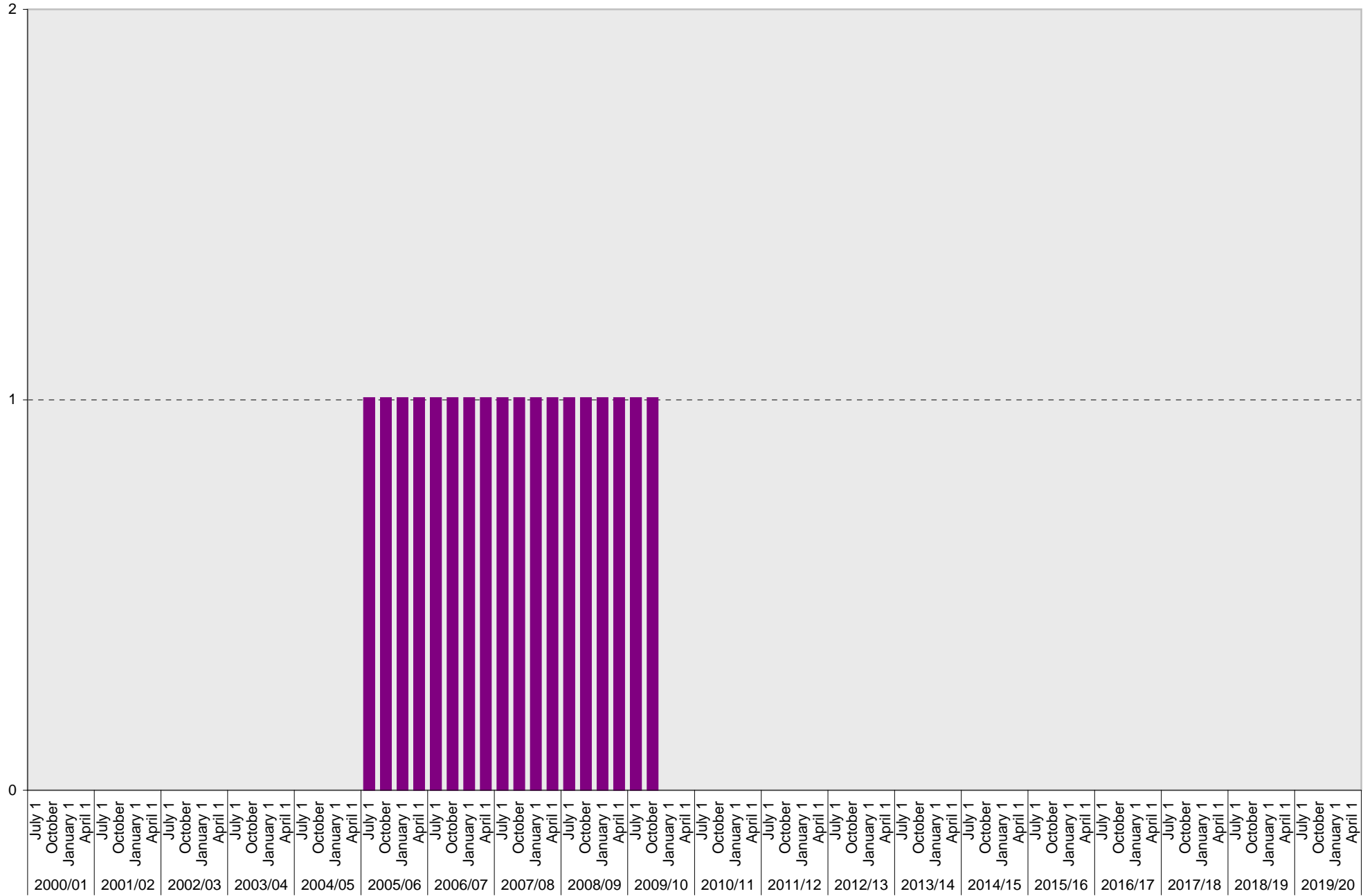
# University of California, San Diego Parking Space Inventory

## Lot P909: Allocated: Bannister Family House Patient/Visitor Parking Spaces



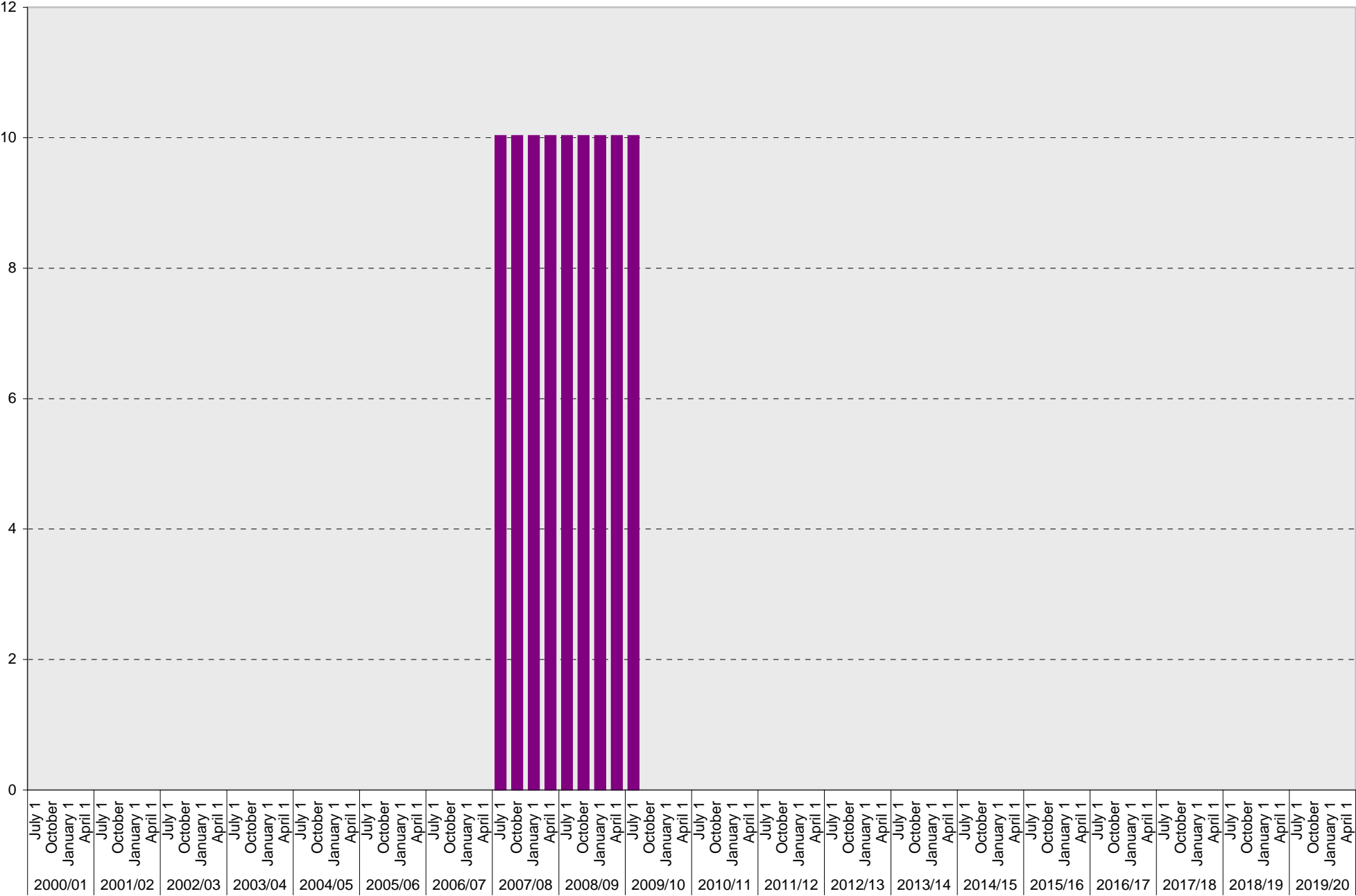
■ Allocated

University of California, San Diego Parking Space Inventory  
Lot P909: Allocated: Physician Assessment and Clinical Education Program Visitor Parking Spaces



■ Allocated

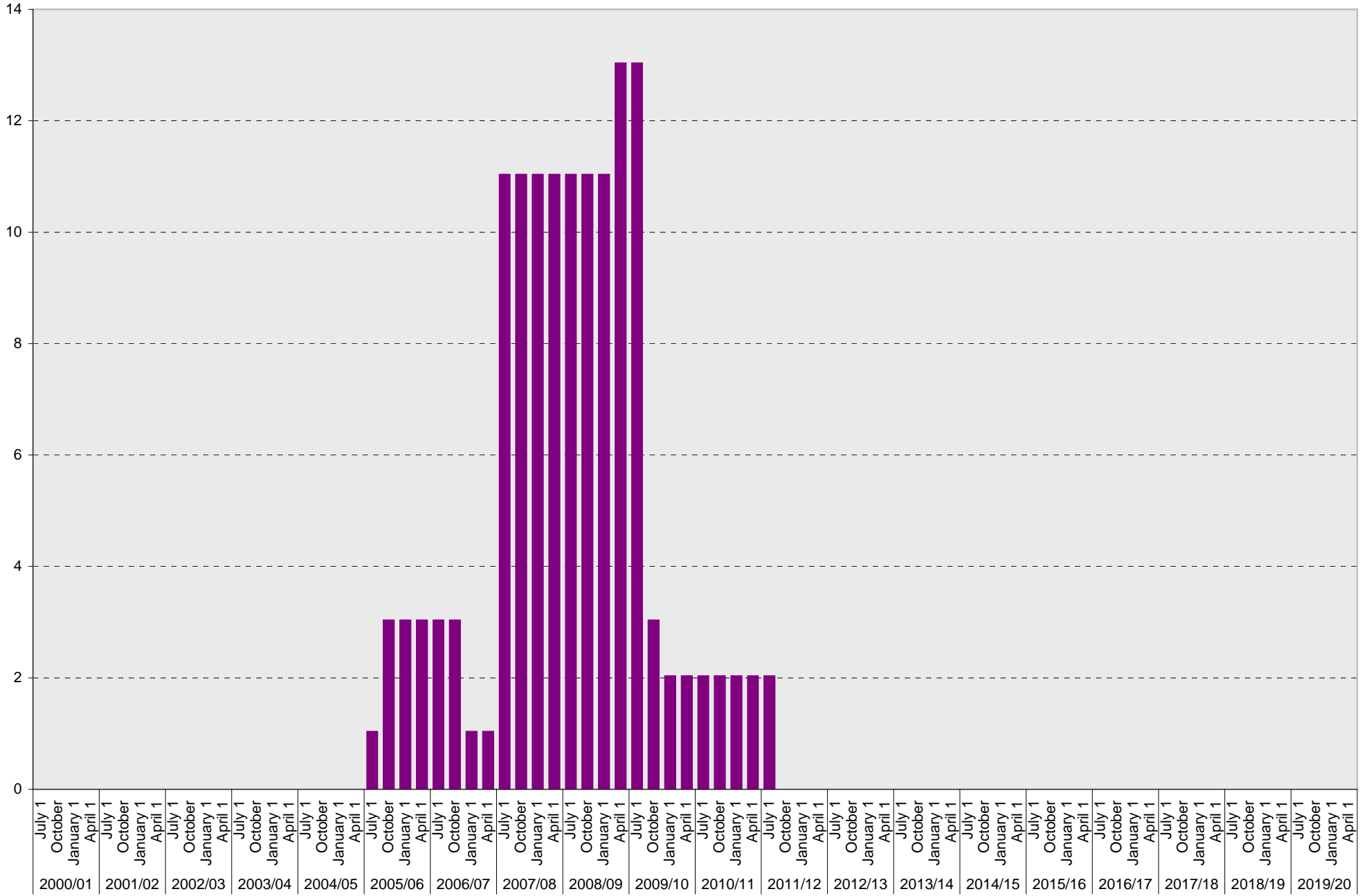
University of California, San Diego Parking Space Inventory  
Lot P909: Allocated: Valet Parking Spaces



■ Allocated

# University of California, San Diego Parking Space Inventory

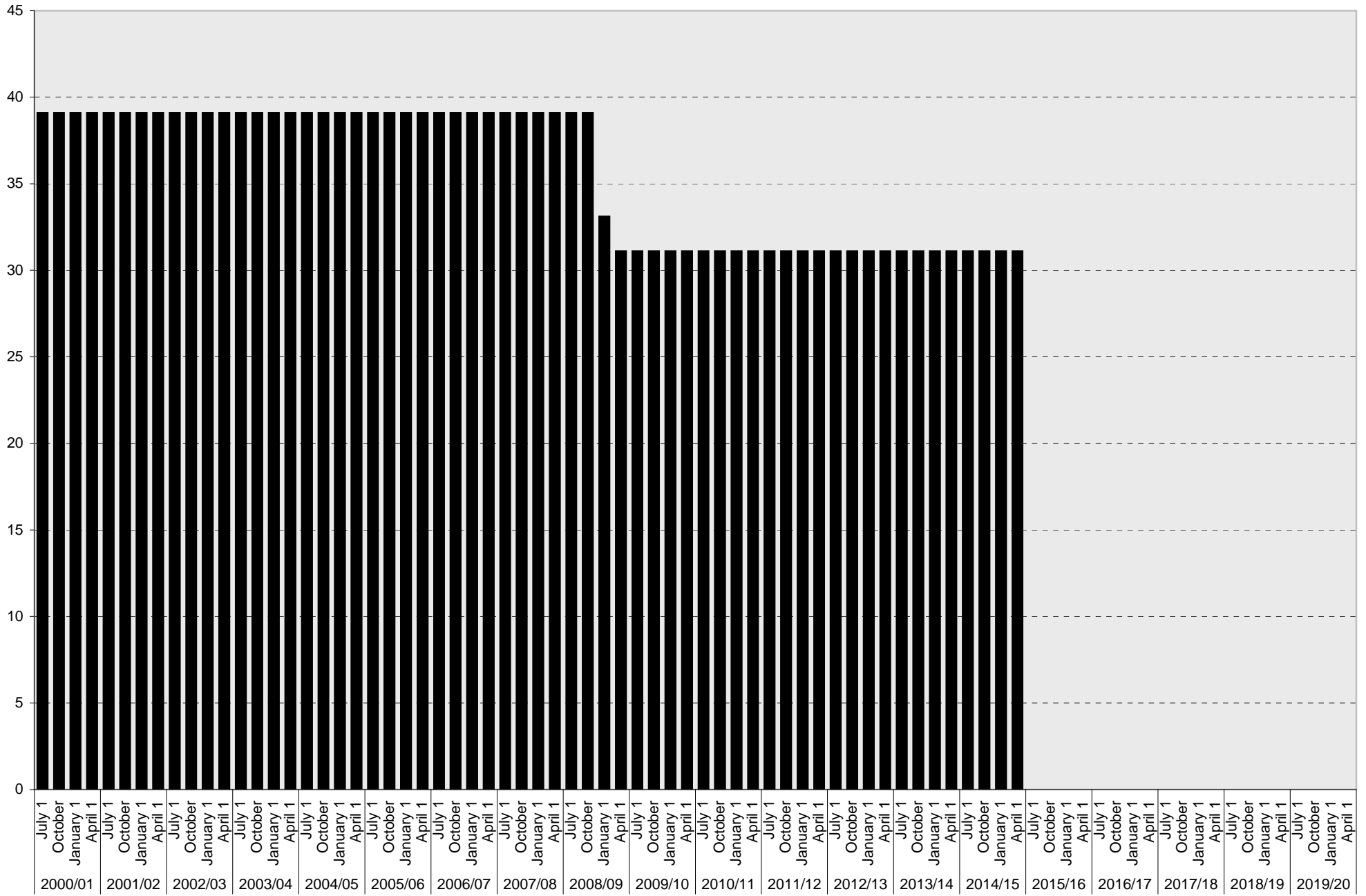
## Lot P909: Allocated: Total Parking Spaces



Allocated: Total

# University of California, San Diego Parking Space Inventory

## Lot P909: Total Parking Spaces

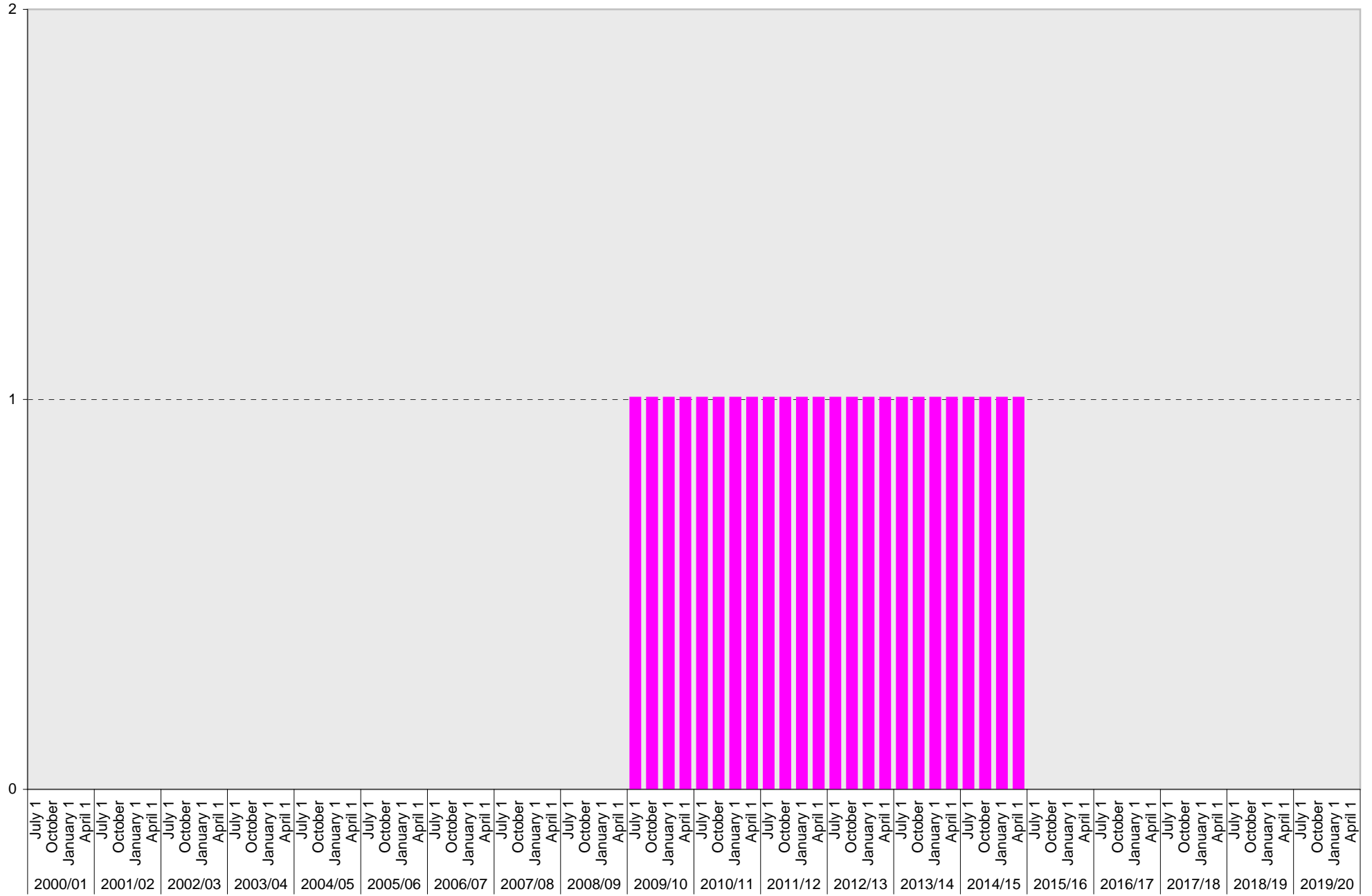


■ Total



# University of California, San Diego Parking Space Inventory

## Lot P909: Motorcycle Parking Sections



Motorcycle

University of California, San Diego Parking Space Inventory  
Lot P909

| Date    |           | Parking Spaces |   |   |         |          |           |            |               |                 |         | Motorcycle<br>Parking<br>Sections |       |
|---------|-----------|----------------|---|---|---------|----------|-----------|------------|---------------|-----------------|---------|-----------------------------------|-------|
|         |           | A              | B | S | Visitor | Reserved | Allocated | Accessible | UC<br>Vehicle | Service<br>Yard | Loading |                                   | Total |
| 2000/01 | July 1    | 26             |   |   |         | 13       |           |            |               |                 |         | 39                                |       |
|         | October 1 | 27             |   |   |         | 12       |           |            |               |                 |         | 39                                |       |
|         | January 1 | 26             |   |   |         | 13       |           |            |               |                 |         | 39                                |       |
|         | April 1   | 25             |   |   |         | 14       |           |            |               |                 |         | 39                                |       |
| 2001/02 | July 1    | 26             |   |   |         | 13       |           |            |               |                 |         | 39                                |       |
|         | October 1 | 26             |   |   |         | 13       |           |            |               |                 |         | 39                                |       |
|         | January 1 | 26             |   |   |         | 13       |           |            |               |                 |         | 39                                |       |
|         | April 1   | 28             |   |   |         | 11       |           |            |               |                 |         | 39                                |       |
| 2002/03 | July 1    | 28             |   |   |         | 11       |           |            |               |                 |         | 39                                |       |
|         | October 1 | 28             |   |   |         | 11       |           |            |               |                 |         | 39                                |       |
|         | January 1 | 28             |   |   |         | 11       |           |            |               |                 |         | 39                                |       |
|         | April 1   | 28             |   |   |         | 11       |           |            |               |                 |         | 39                                |       |
| 2003/04 | July 1    | 28             |   |   |         | 11       |           |            |               |                 |         | 39                                |       |
|         | October 1 | 28             |   |   |         | 11       |           |            |               |                 |         | 39                                |       |
|         | January 1 | 28             |   |   |         | 11       |           |            |               |                 |         | 39                                |       |
|         | April 1   | 24             |   |   |         | 15       |           |            |               |                 |         | 39                                |       |
| 2004/05 | July 1    | 24             |   |   |         | 15       |           |            |               |                 |         | 39                                |       |
|         | October 1 | 24             |   |   |         | 15       |           |            |               |                 |         | 39                                |       |
|         | January 1 | 24             |   |   |         | 15       |           |            |               |                 |         | 39                                |       |
|         | April 1   | 27             |   |   |         | 12       |           |            |               |                 |         | 39                                |       |
| 2005/06 | July 1    | 26             |   |   |         | 12       | 1         |            |               |                 |         | 39                                |       |
|         | October 1 | 24             |   |   |         | 12       | 3         |            |               |                 |         | 39                                |       |
|         | January 1 | 23             |   |   |         | 13       | 3         |            |               |                 |         | 39                                |       |
|         | April 1   | 23             |   |   |         | 13       | 3         |            |               |                 |         | 39                                |       |
| 2006/07 | July 1    | 21             |   |   |         | 15       | 3         |            |               |                 |         | 39                                |       |
|         | October 1 | 19             |   |   |         | 17       | 3         |            |               |                 |         | 39                                |       |
|         | January 1 | 20             |   |   |         | 18       | 1         |            |               |                 |         | 39                                |       |
|         | April 1   | 20             |   |   |         | 18       | 1         |            |               |                 |         | 39                                |       |
| 2007/08 | July 1    | 10             |   |   |         | 18       | 11        |            |               |                 |         | 39                                |       |
|         | October 1 | 10             |   |   |         | 18       | 11        |            |               |                 |         | 39                                |       |
|         | January 1 | 10             |   |   |         | 18       | 11        |            |               |                 |         | 39                                |       |
|         | April 1   | 10             |   |   |         | 18       | 11        |            |               |                 |         | 39                                |       |
| 2008/09 | July 1    | 10             |   |   |         | 18       | 11        |            |               |                 |         | 39                                |       |
|         | October 1 | 10             |   |   |         | 18       | 11        |            |               |                 |         | 39                                |       |
|         | January 1 | 4              |   |   |         | 18       | 11        |            |               |                 |         | 33                                |       |
|         | April 1   |                |   |   |         | 18       | 13        |            |               |                 |         | 31                                |       |
| 2009/10 | July 1    |                |   |   |         | 18       | 13        |            |               |                 |         | 31                                | 1     |
|         | October 1 | 10             |   |   |         | 18       | 3         |            |               |                 |         | 31                                | 1     |
|         | January 1 | 10             |   |   |         | 19       | 2         |            |               |                 |         | 31                                | 1     |
|         | April 1   | 10             |   |   |         | 19       | 2         |            |               |                 |         | 31                                | 1     |



University of California, San Diego Parking Space Inventory  
 Lot P909: Visitor Parking Spaces

| Date    |           | Visitor Parking Spaces |                 |              |               |
|---------|-----------|------------------------|-----------------|--------------|---------------|
|         |           | Meter                  | Pay and Display | Pay by Space | Pay upon Exit |
| 2000/01 | July 1    |                        |                 |              |               |
|         | October 1 |                        |                 |              |               |
|         | January 1 |                        |                 |              |               |
|         | April 1   |                        |                 |              |               |
| 2001/02 | July 1    |                        |                 |              |               |
|         | October 1 |                        |                 |              |               |
|         | January 1 |                        |                 |              |               |
|         | April 1   |                        |                 |              |               |
| 2002/03 | July 1    |                        |                 |              |               |
|         | October 1 |                        |                 |              |               |
|         | January 1 |                        |                 |              |               |
|         | April 1   |                        |                 |              |               |
| 2003/04 | July 1    |                        |                 |              |               |
|         | October 1 |                        |                 |              |               |
|         | January 1 |                        |                 |              |               |
|         | April 1   |                        |                 |              |               |
| 2004/05 | July 1    |                        |                 |              |               |
|         | October 1 |                        |                 |              |               |
|         | January 1 |                        |                 |              |               |
|         | April 1   |                        |                 |              |               |
| 2005/06 | July 1    |                        |                 |              |               |
|         | October 1 |                        |                 |              |               |
|         | January 1 |                        |                 |              |               |
|         | April 1   |                        |                 |              |               |
| 2006/07 | July 1    |                        |                 |              |               |
|         | October 1 |                        |                 |              |               |
|         | January 1 |                        |                 |              |               |
|         | April 1   |                        |                 |              |               |
| 2007/08 | July 1    |                        |                 |              |               |
|         | October 1 |                        |                 |              |               |
|         | January 1 |                        |                 |              |               |
|         | April 1   |                        |                 |              |               |
| 2008/09 | July 1    |                        |                 |              |               |
|         | October 1 |                        |                 |              |               |
|         | January 1 |                        |                 |              |               |
|         | April 1   |                        |                 |              |               |
| 2009/10 | July 1    |                        |                 |              |               |
|         | October 1 |                        |                 |              |               |
|         | January 1 |                        |                 |              |               |
|         | April 1   |                        |                 |              |               |

| Date    |           | Visitor Parking Spaces |                 |              |               |
|---------|-----------|------------------------|-----------------|--------------|---------------|
|         |           | Meter                  | Pay and Display | Pay by Space | Pay upon Exit |
| 2010/11 | July 1    |                        |                 |              |               |
|         | October 1 |                        |                 |              |               |
|         | January 1 |                        |                 |              |               |
|         | April 1   |                        |                 |              |               |
| 2011/12 | July 1    |                        |                 |              |               |
|         | October 1 |                        |                 |              |               |
|         | January 1 |                        |                 |              |               |
|         | April 1   |                        |                 |              |               |
| 2012/13 | July 1    |                        |                 |              |               |
|         | October 1 |                        |                 |              |               |
|         | January 1 |                        |                 |              |               |
|         | April 1   |                        |                 |              |               |
| 2013/14 | July 1    |                        |                 |              |               |
|         | October 1 |                        |                 |              |               |
|         | January 1 |                        |                 |              |               |
|         | April 1   |                        |                 |              |               |
| 2014/15 | July 1    |                        |                 |              |               |
|         | October 1 |                        |                 |              |               |
|         | January 1 |                        |                 |              |               |
|         | April 1   |                        |                 |              |               |
| 2015/16 | July 1    |                        |                 |              |               |
|         | October 1 |                        |                 |              |               |
|         | January 1 |                        |                 |              |               |
|         | April 1   |                        |                 |              |               |
| 2016/17 | July 1    |                        |                 |              |               |
|         | October 1 |                        |                 |              |               |
|         | January 1 |                        |                 |              |               |
|         | April 1   |                        |                 |              |               |
| 2017/18 | July 1    |                        |                 |              |               |
|         | October 1 |                        |                 |              |               |
|         | January 1 |                        |                 |              |               |
|         | April 1   |                        |                 |              |               |
| 2018/19 | July 1    |                        |                 |              |               |
|         | October 1 |                        |                 |              |               |
|         | January 1 |                        |                 |              |               |
|         | April 1   |                        |                 |              |               |
| 2019/20 | July 1    |                        |                 |              |               |
|         | October 1 |                        |                 |              |               |
|         | January 1 |                        |                 |              |               |
|         | April 1   |                        |                 |              |               |



