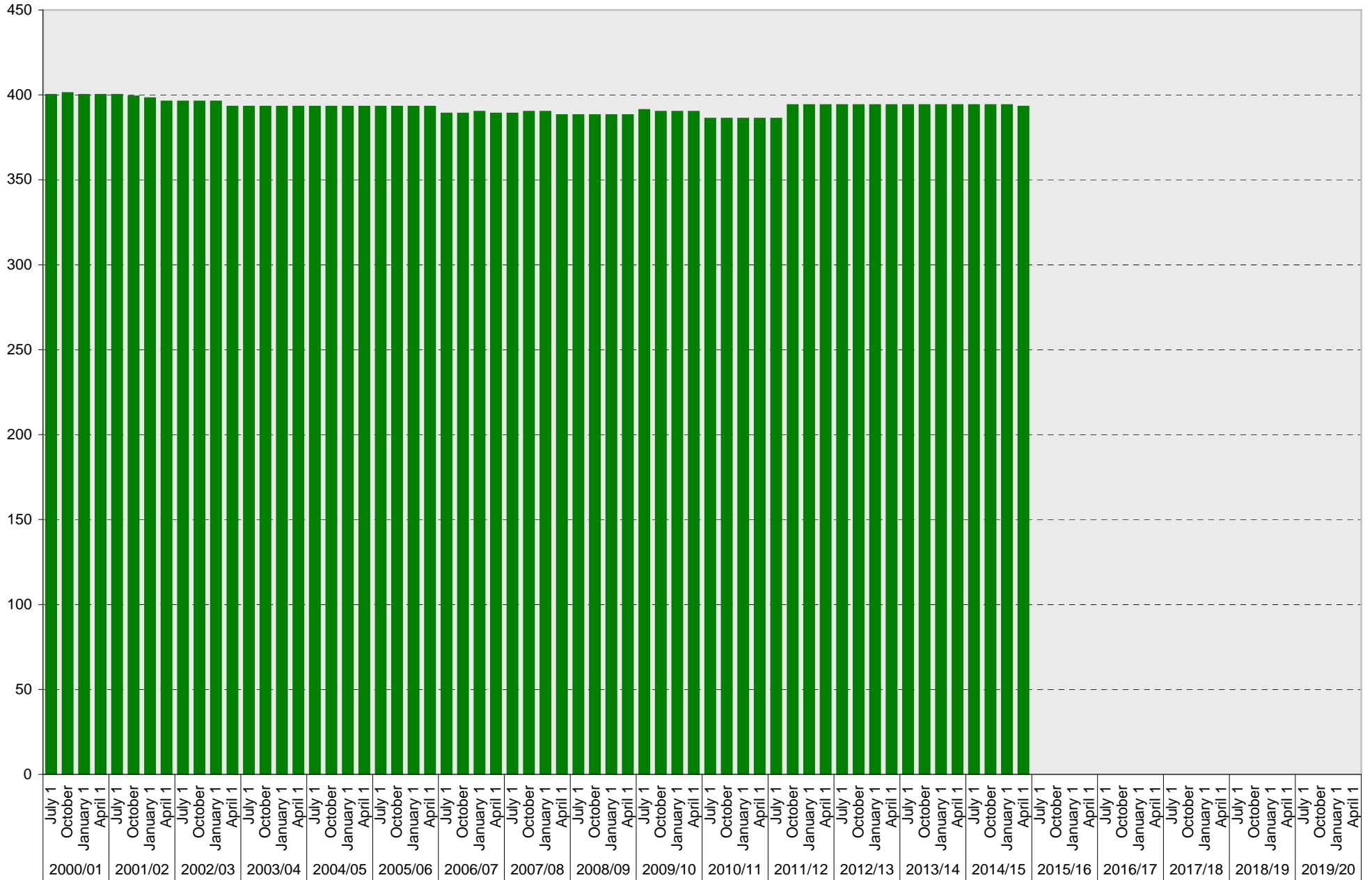


# University of California, San Diego Parking Space Inventory

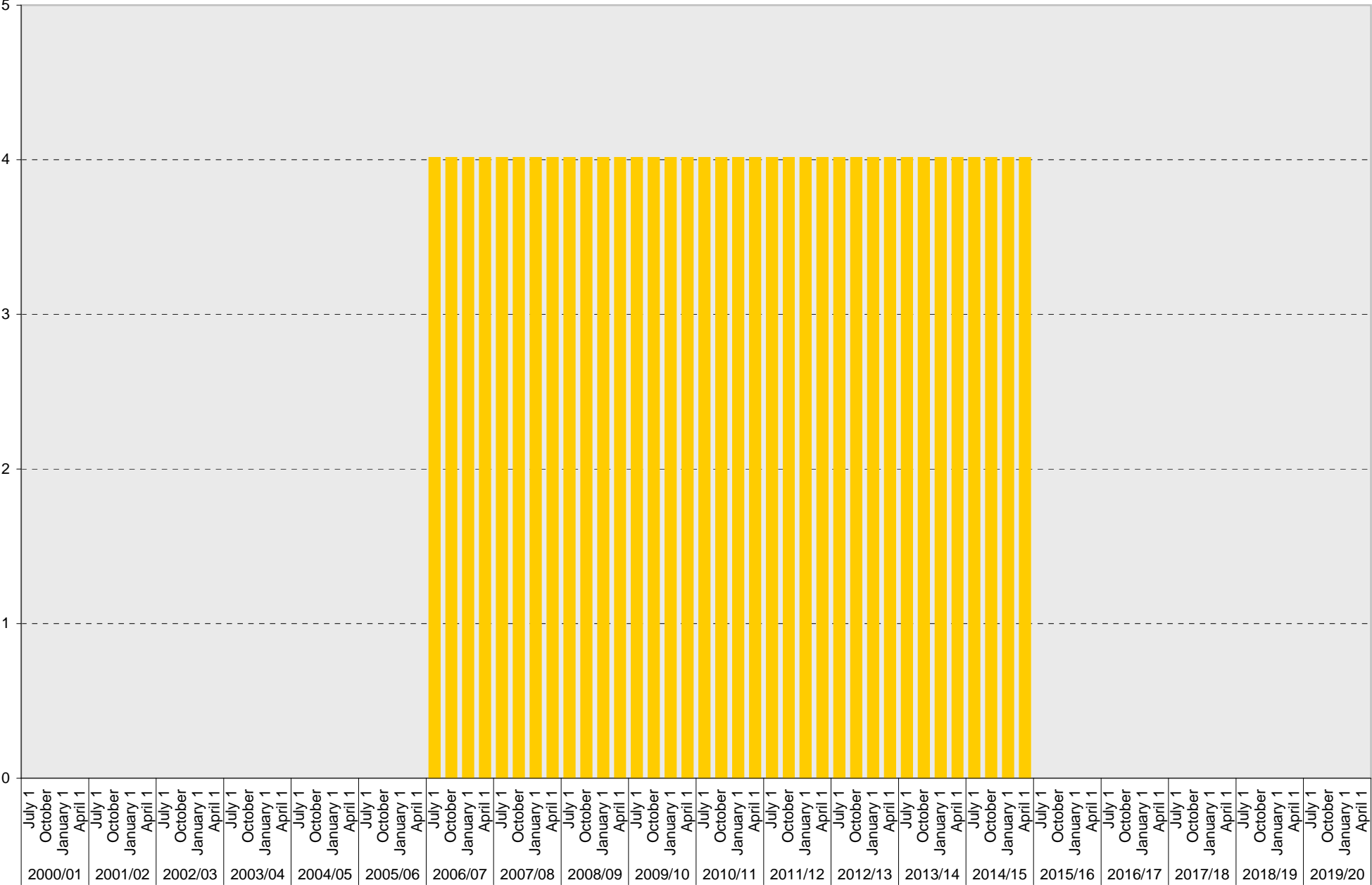
## Torrey Pines Center South: B Parking Spaces



■ B

# University of California, San Diego Parking Space Inventory

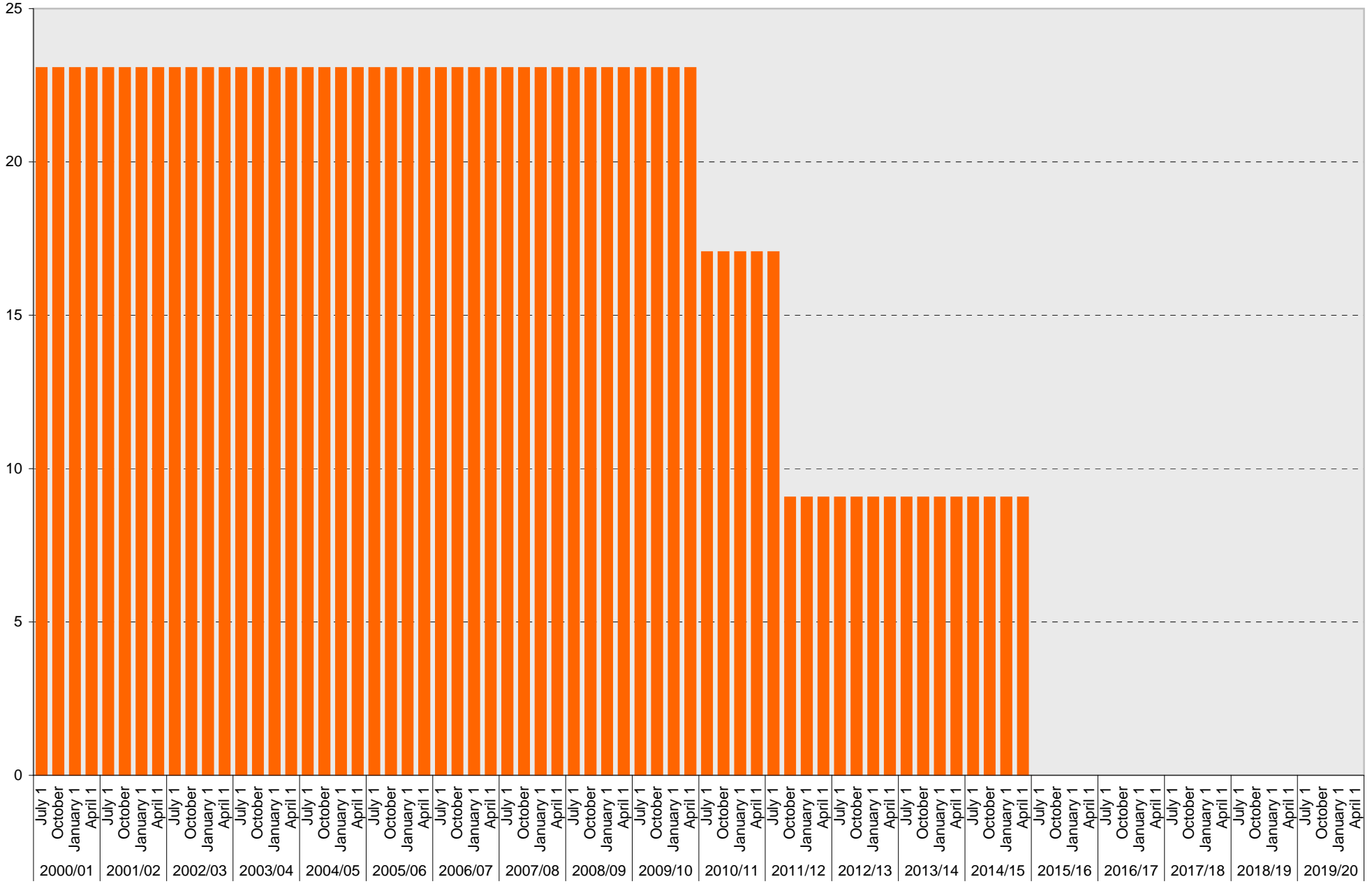
## Torrey Pines Center South: S Parking Spaces



■ S

# University of California, San Diego Parking Space Inventory

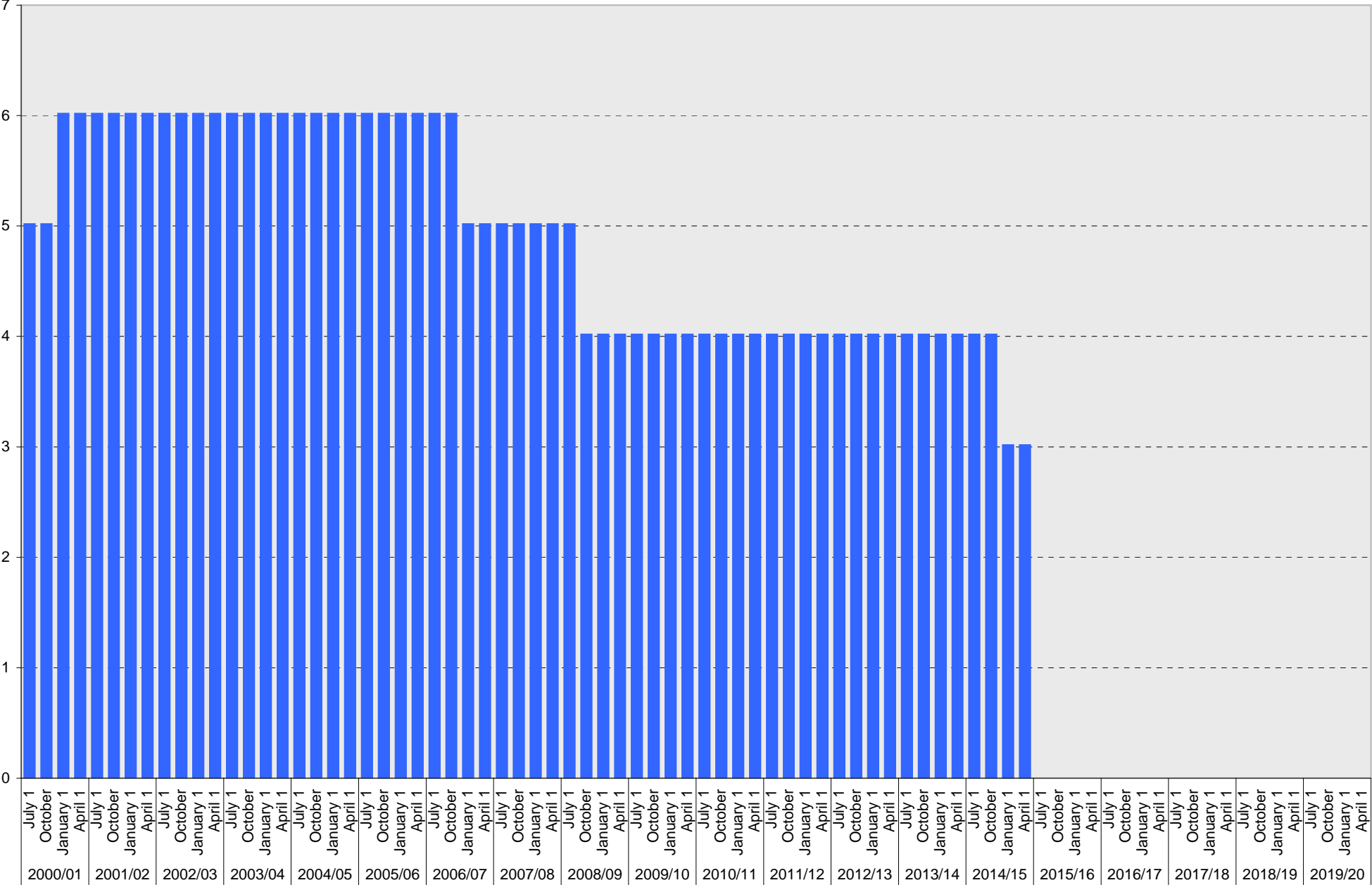
## Torrey Pines Center South: Visitor Parking Spaces



■ Visitor

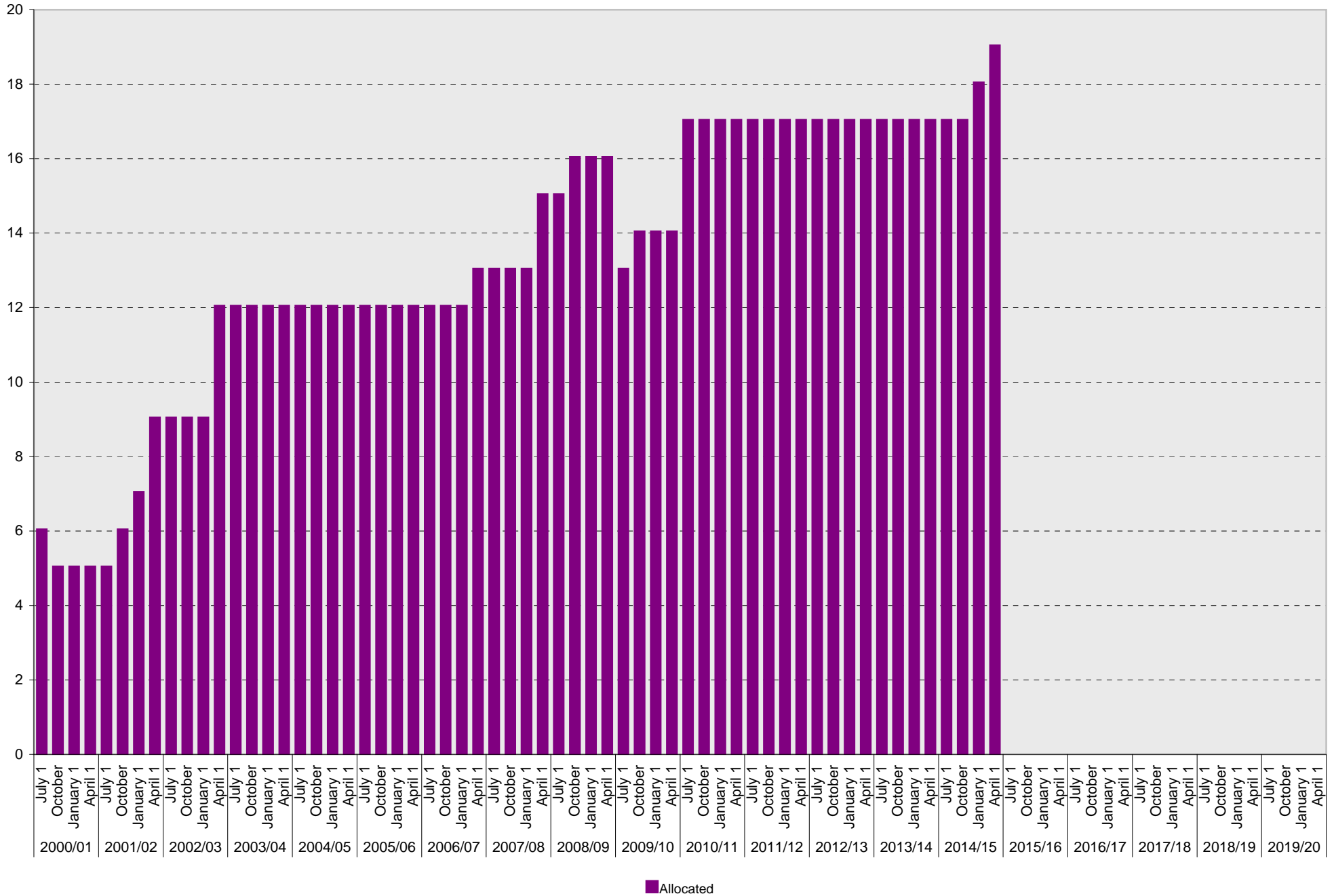
# University of California, San Diego Parking Space Inventory

## Torrey Pines Center South: Reserved Parking Spaces



■ Reserved

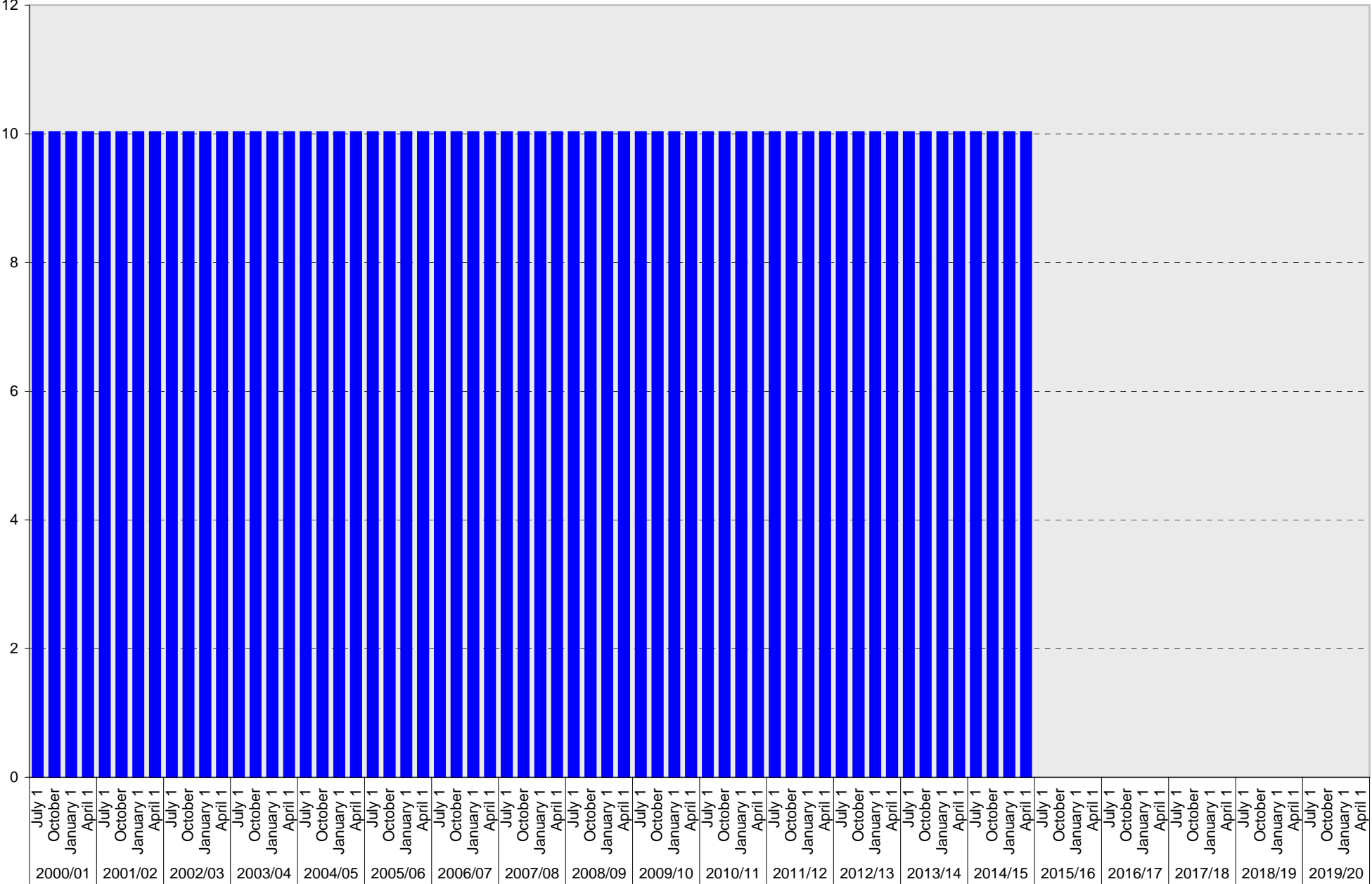
# University of California, San Diego Parking Space Inventory Torrey Pines Center South: Allocated Parking Spaces



■ Allocated

# University of California, San Diego Parking Space Inventory

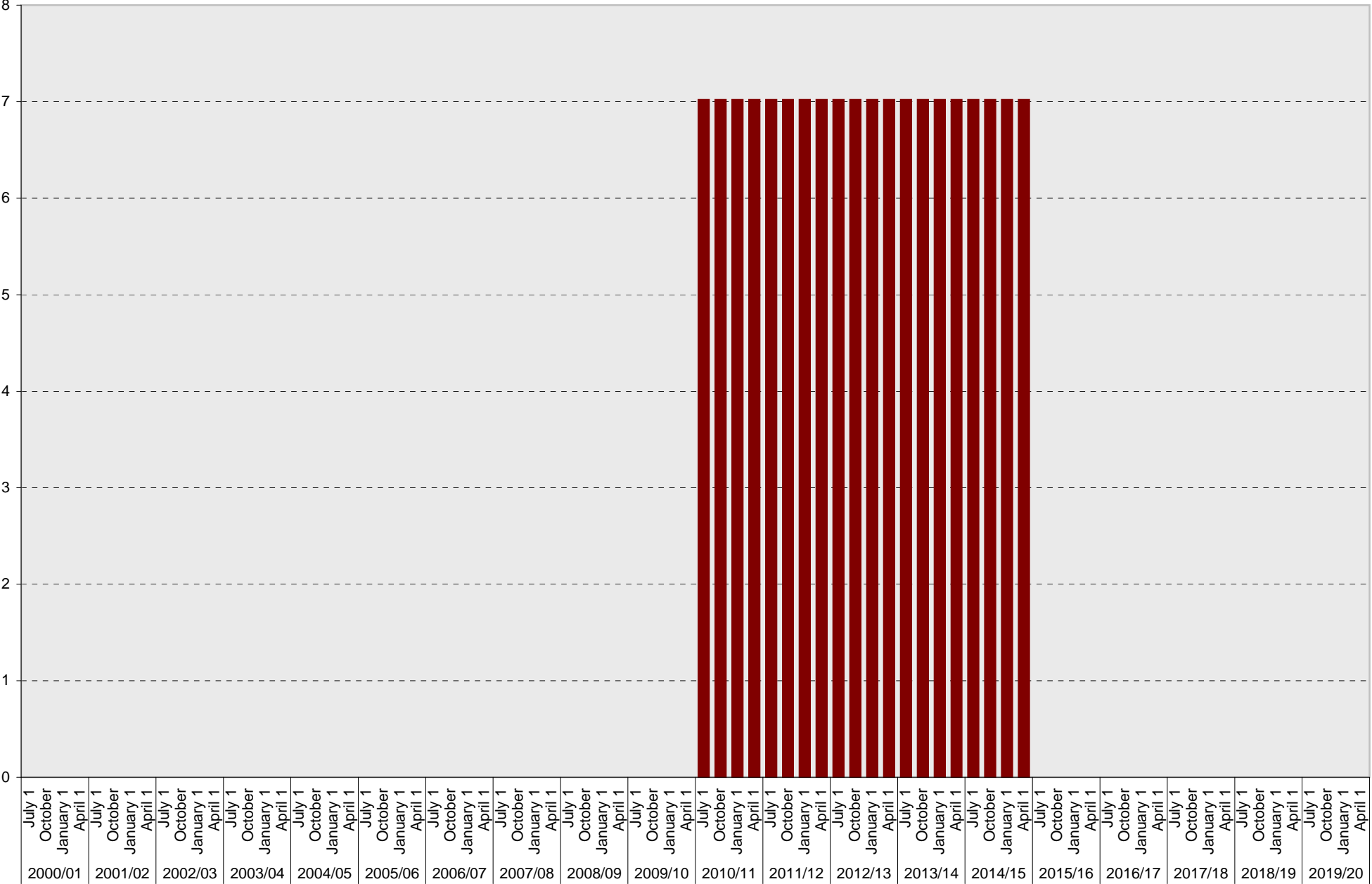
## Torrey Pines Center South: Accessible Parking Spaces



■ Accessible

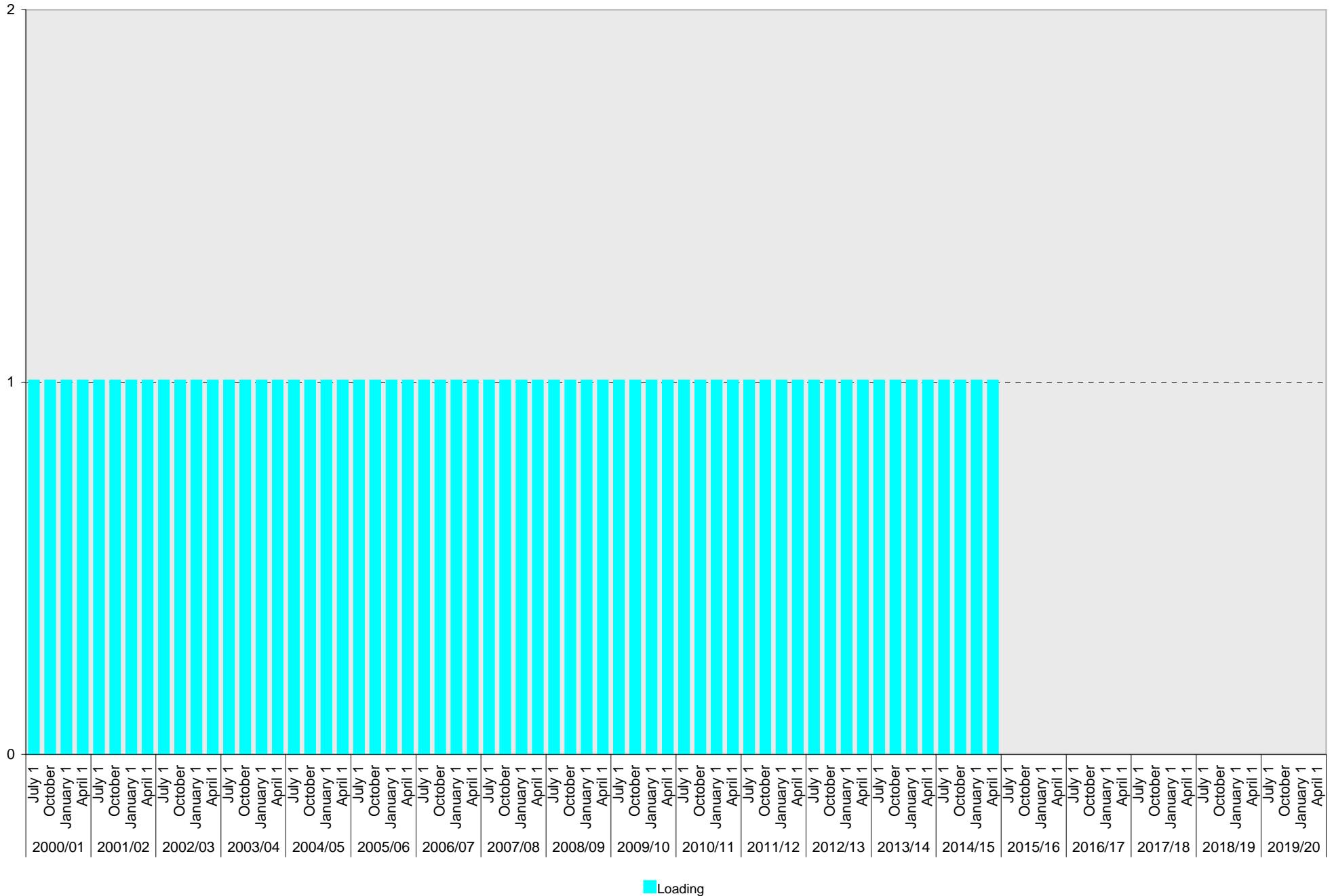
# University of California, San Diego Parking Space Inventory

## Torrey Pines Center South: UC Vehicle Parking Spaces



■ UC Vehicle

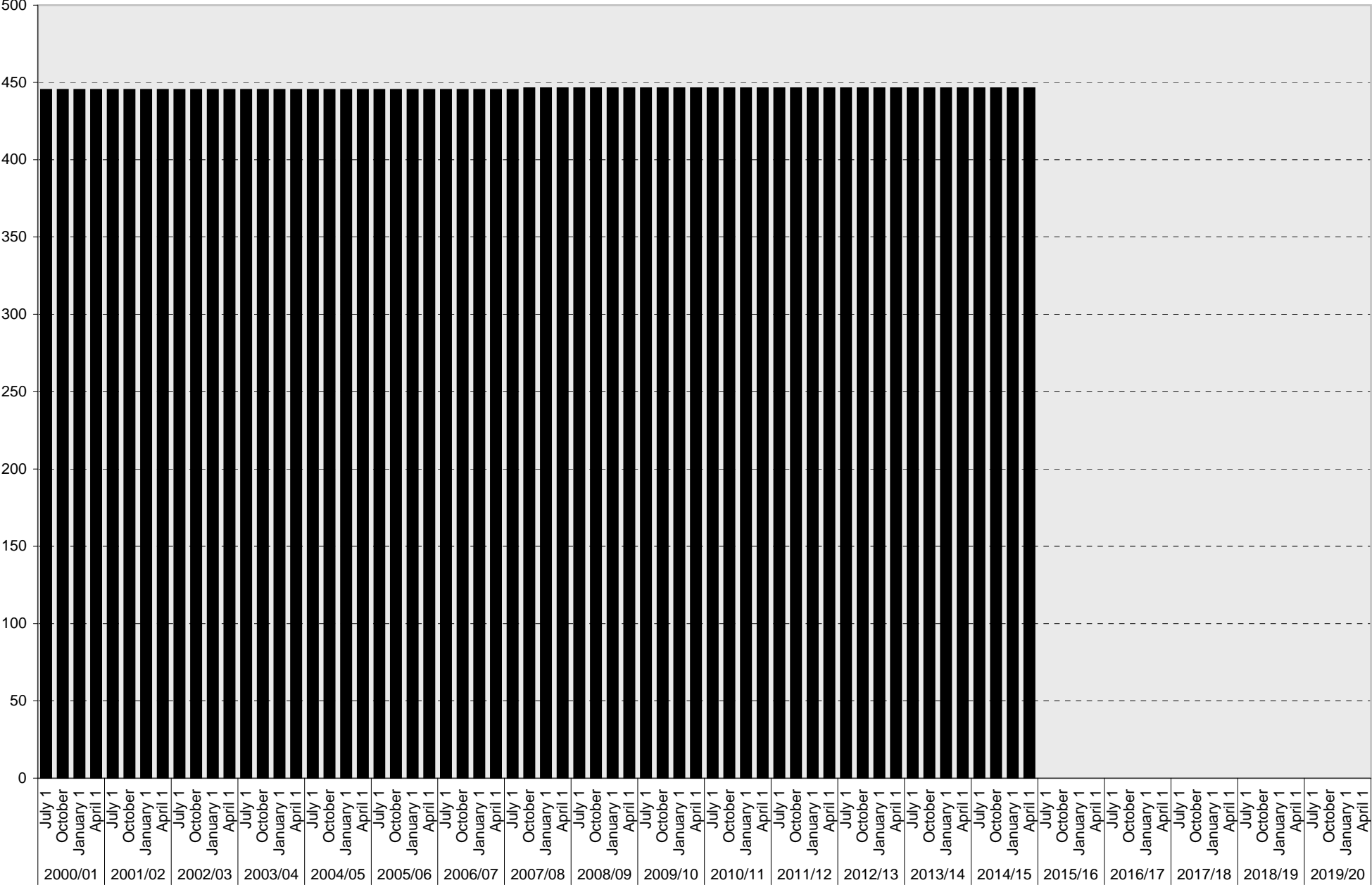
# University of California, San Diego Parking Space Inventory Torrey Pines Center South: Loading Parking Spaces





# University of California, San Diego Parking Space Inventory

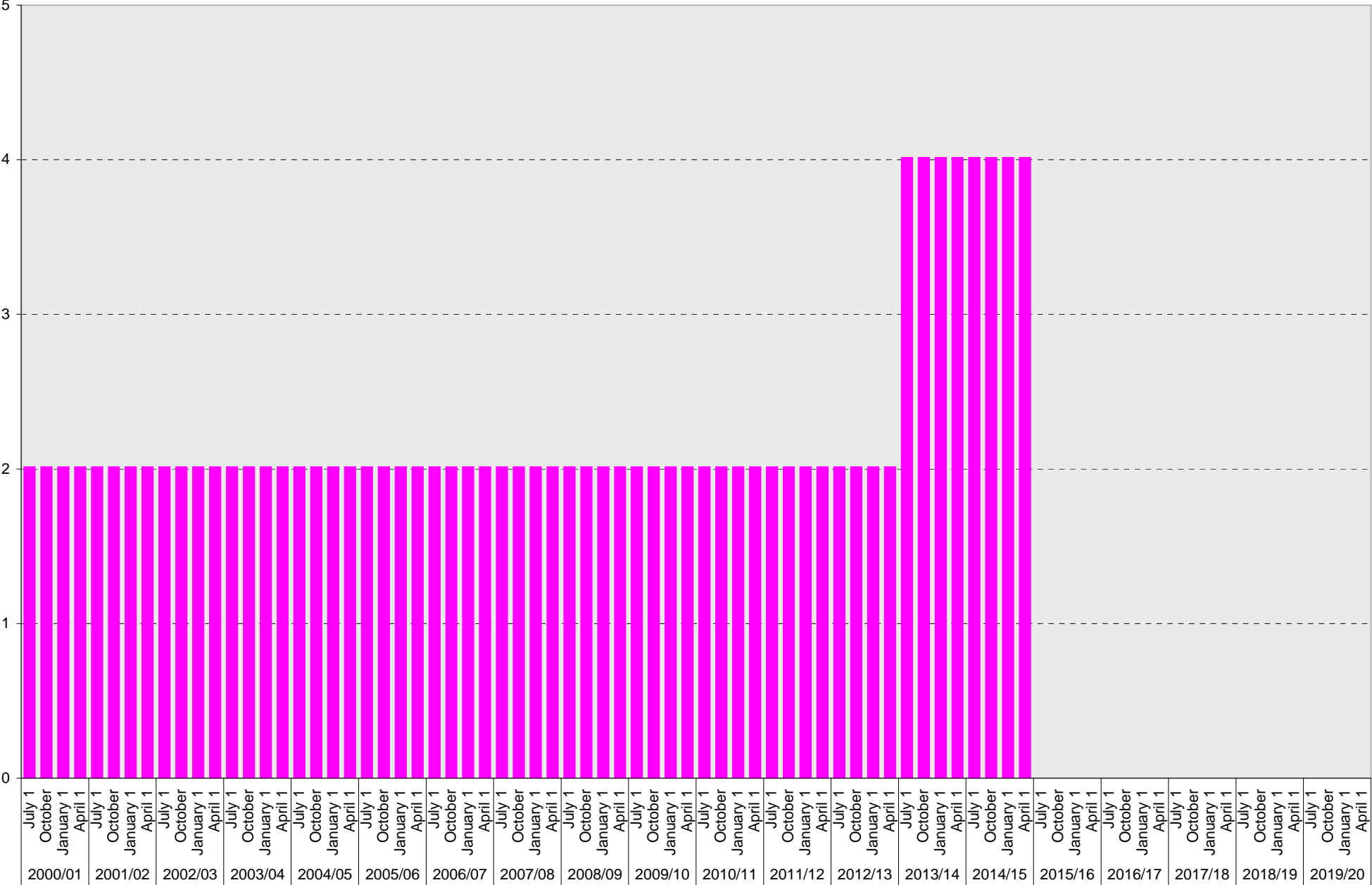
## Torrey Pines Center South: Total Parking Spaces



■ Total

# University of California, San Diego Parking Space Inventory

## Torrey Pines Center South: Motorcycle Parking Sections



■ Motorcycle

University of California, San Diego Parking Space Inventory  
Torrey Pines Center South

Date		Parking Spaces										Motorcycle Parking Sections	
		A	B	S	Visitor	Reserved	Allocated	Accessible	UC Vehicle	Service Yard	Loading		Total
2000/01	July 1		399		23	5	6	10			1	444	2
	October 1		400		23	5	5	10			1	444	2
	January 1		399		23	6	5	10			1	444	2
	April 1		399		23	6	5	10			1	444	2
2001/02	July 1		399		23	6	5	10			1	444	2
	October 1		398		23	6	6	10			1	444	2
	January 1		397		23	6	7	10			1	444	2
	April 1		395		23	6	9	10			1	444	2
2002/03	July 1		395		23	6	9	10			1	444	2
	October 1		395		23	6	9	10			1	444	2
	January 1		395		23	6	9	10			1	444	2
	April 1		392		23	6	12	10			1	444	2
2003/04	July 1		392		23	6	12	10			1	444	2
	October 1		392		23	6	12	10			1	444	2
	January 1		392		23	6	12	10			1	444	2
	April 1		392		23	6	12	10			1	444	2
2004/05	July 1		392		23	6	12	10			1	444	2
	October 1		392		23	6	12	10			1	444	2
	January 1		392		23	6	12	10			1	444	2
	April 1		392		23	6	12	10			1	444	2
2005/06	July 1		392		23	6	12	10			1	444	2
	October 1		392		23	6	12	10			1	444	2
	January 1		392		23	6	12	10			1	444	2
	April 1		392		23	6	12	10			1	444	2
2006/07	July 1		388	4	23	6	12	10			1	444	2
	October 1		388	4	23	6	12	10			1	444	2
	January 1		389	4	23	5	12	10			1	444	2
	April 1		388	4	23	5	13	10			1	444	2
2007/08	July 1		388	4	23	5	13	10			1	444	2
	October 1		389	4	23	5	13	10			1	445	2
	January 1		389	4	23	5	13	10			1	445	2
	April 1		387	4	23	5	15	10			1	445	2
2008/09	July 1		387	4	23	5	15	10			1	445	2
	October 1		387	4	23	4	16	10			1	445	2
	January 1		387	4	23	4	16	10			1	445	2
	April 1		387	4	23	4	16	10			1	445	2
2009/10	July 1		390	4	23	4	13	10			1	445	2
	October 1		389	4	23	4	14	10			1	445	2
	January 1		389	4	23	4	14	10			1	445	2
	April 1		389	4	23	4	14	10			1	445	2

