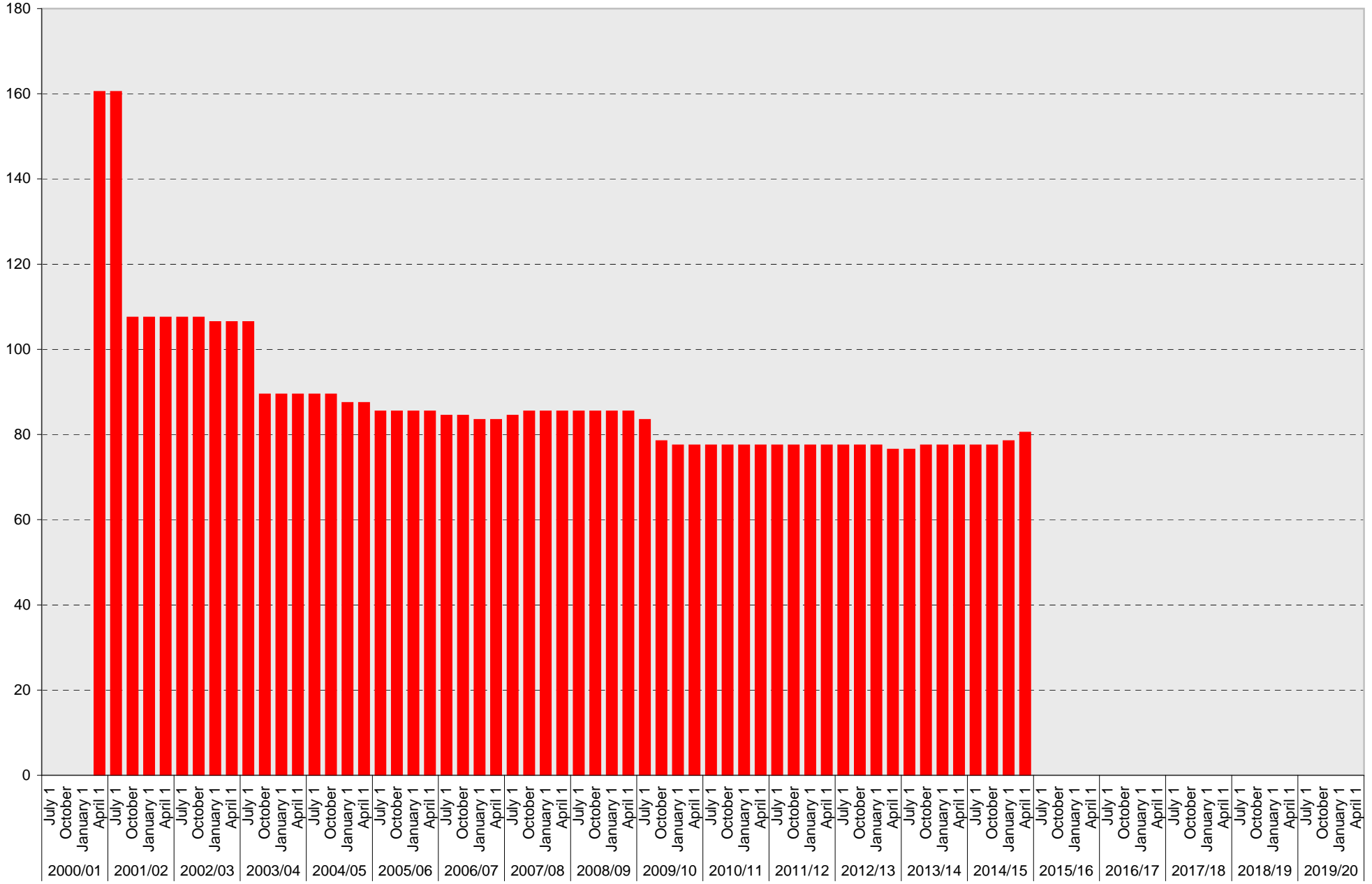


University of California, San Diego Parking Space Inventory

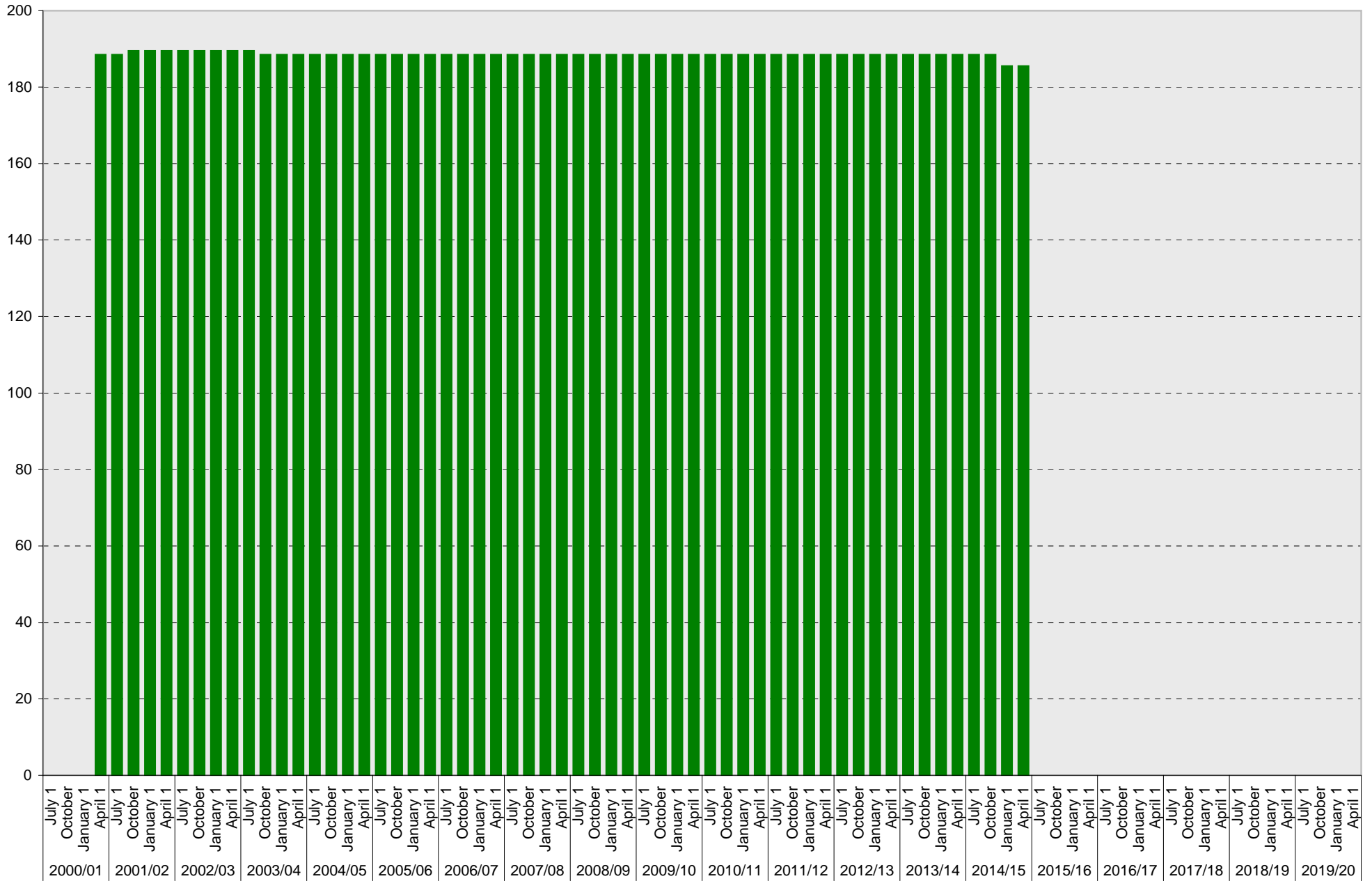
Pangea Structure: A Parking Spaces



■ A

University of California, San Diego Parking Space Inventory

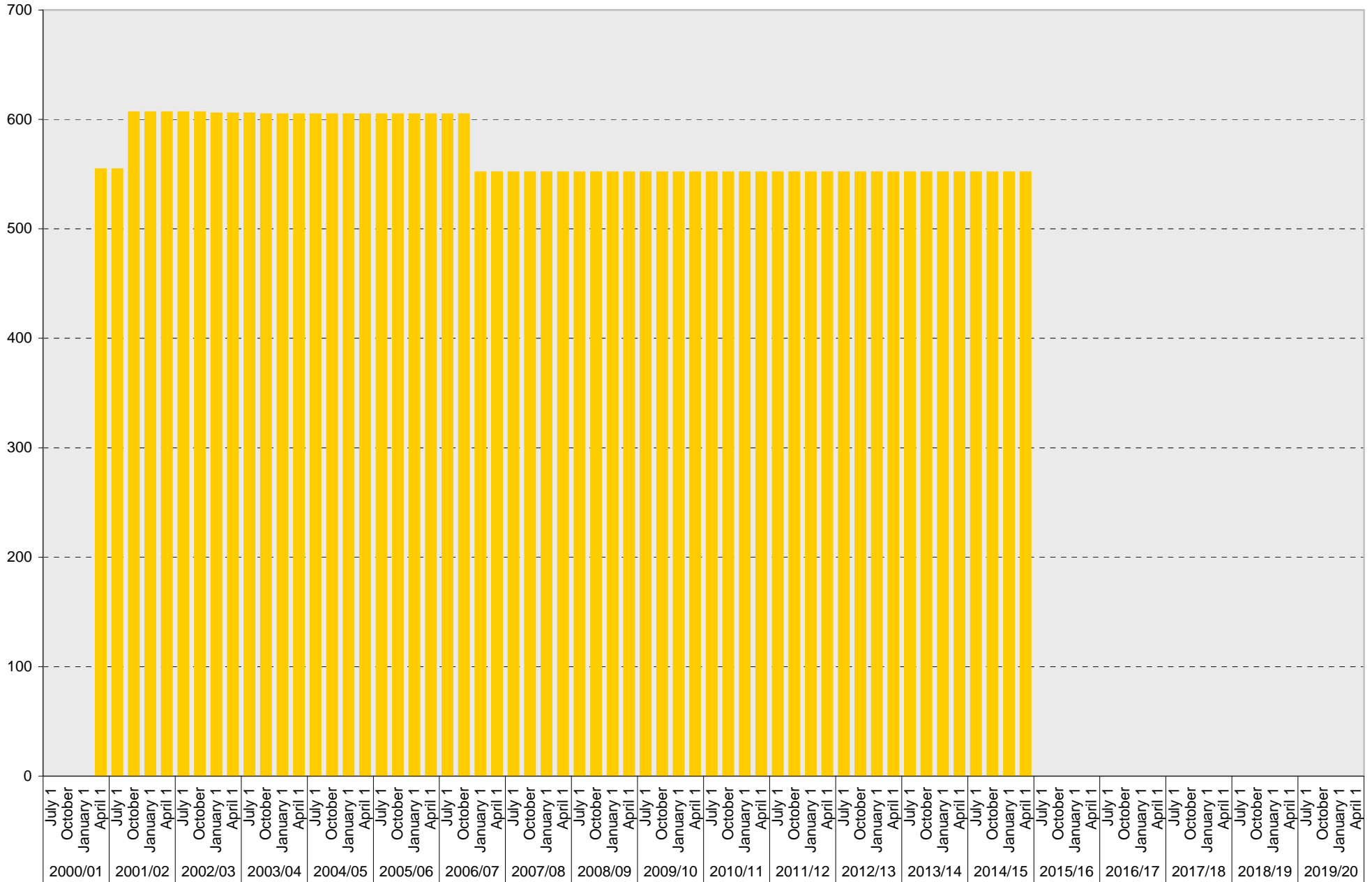
Pangea Structure: B Parking Spaces



■ B

University of California, San Diego Parking Space Inventory

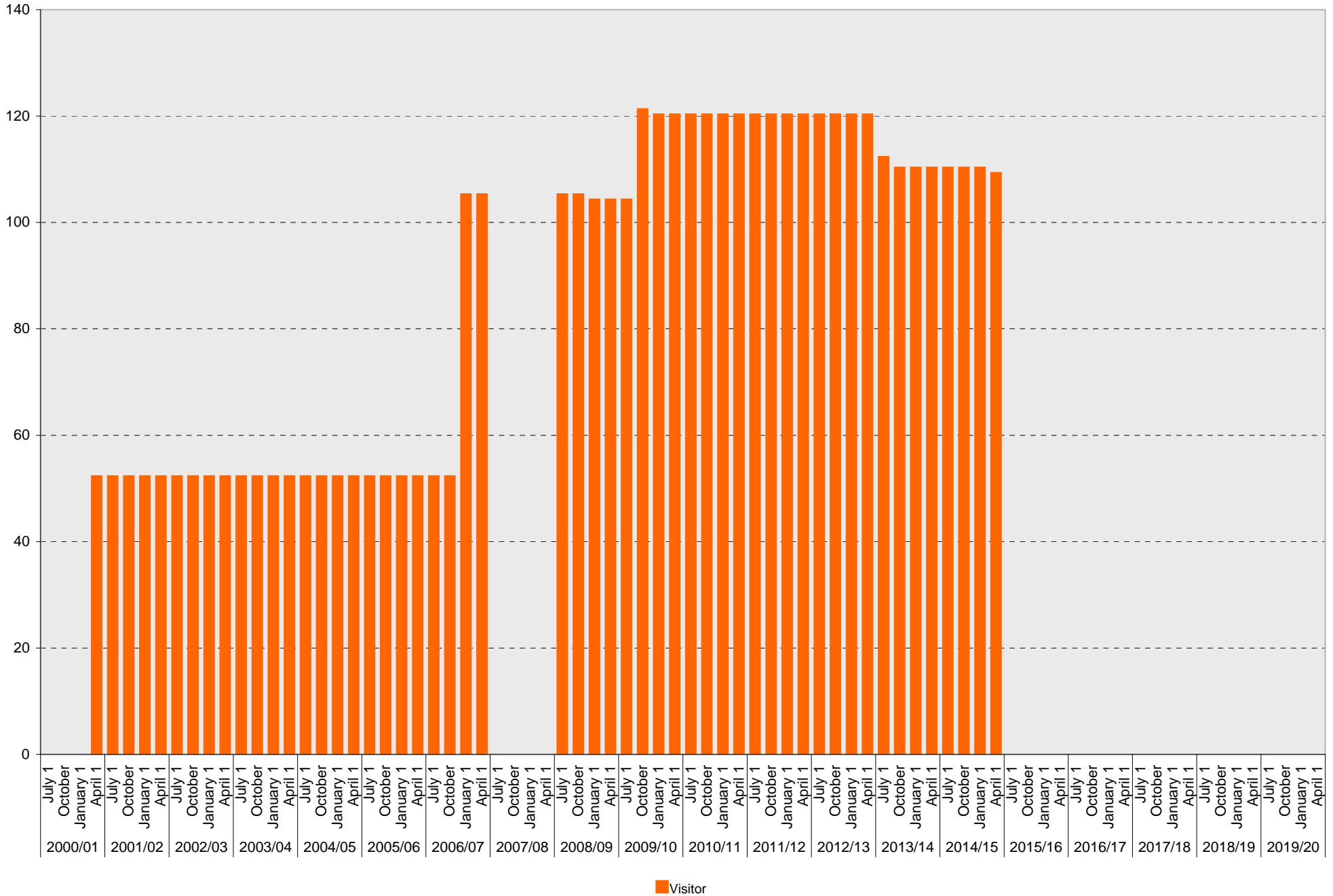
Pangea Structure: S Parking Spaces



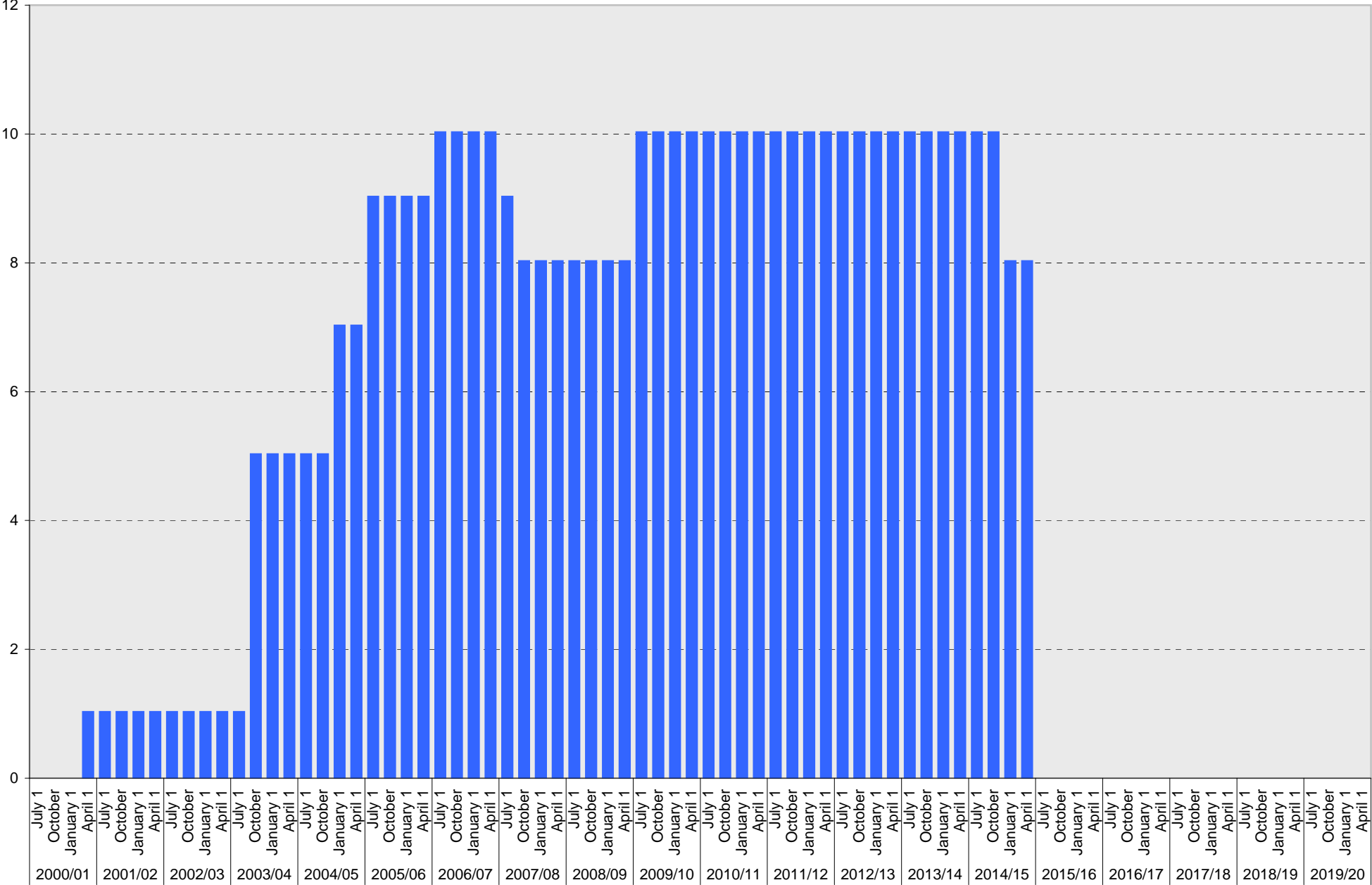
■ S

University of California, San Diego Parking Space Inventory

Pangea Structure: Visitor Parking Spaces



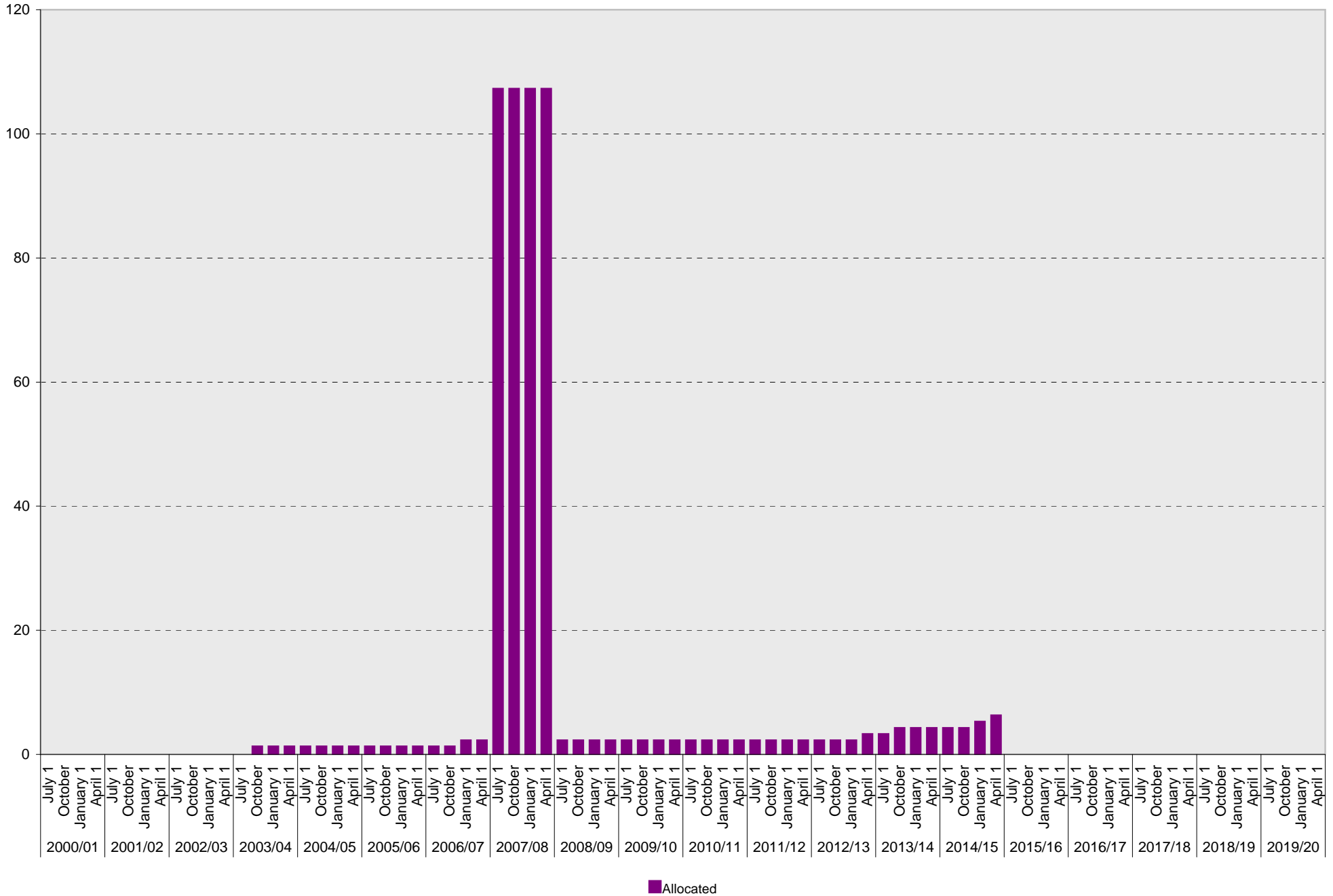
University of California, San Diego Parking Space Inventory
Pangea Structure: Reserved Parking Spaces



Reserved

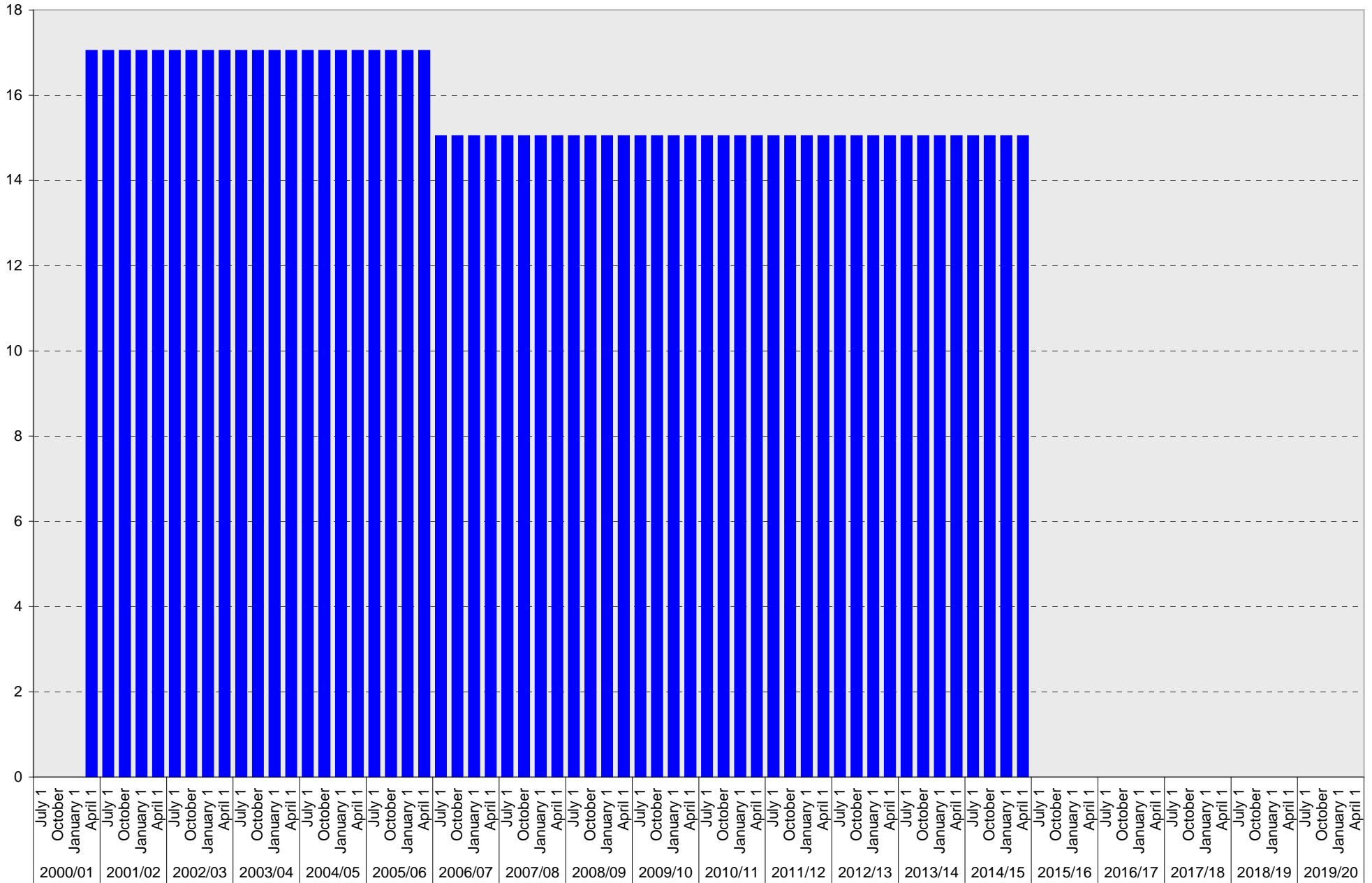
University of California, San Diego Parking Space Inventory

Pangea Structure: Allocated Parking Spaces



University of California, San Diego Parking Space Inventory

Pangea Structure: Accessible Parking Spaces



■ Accessible

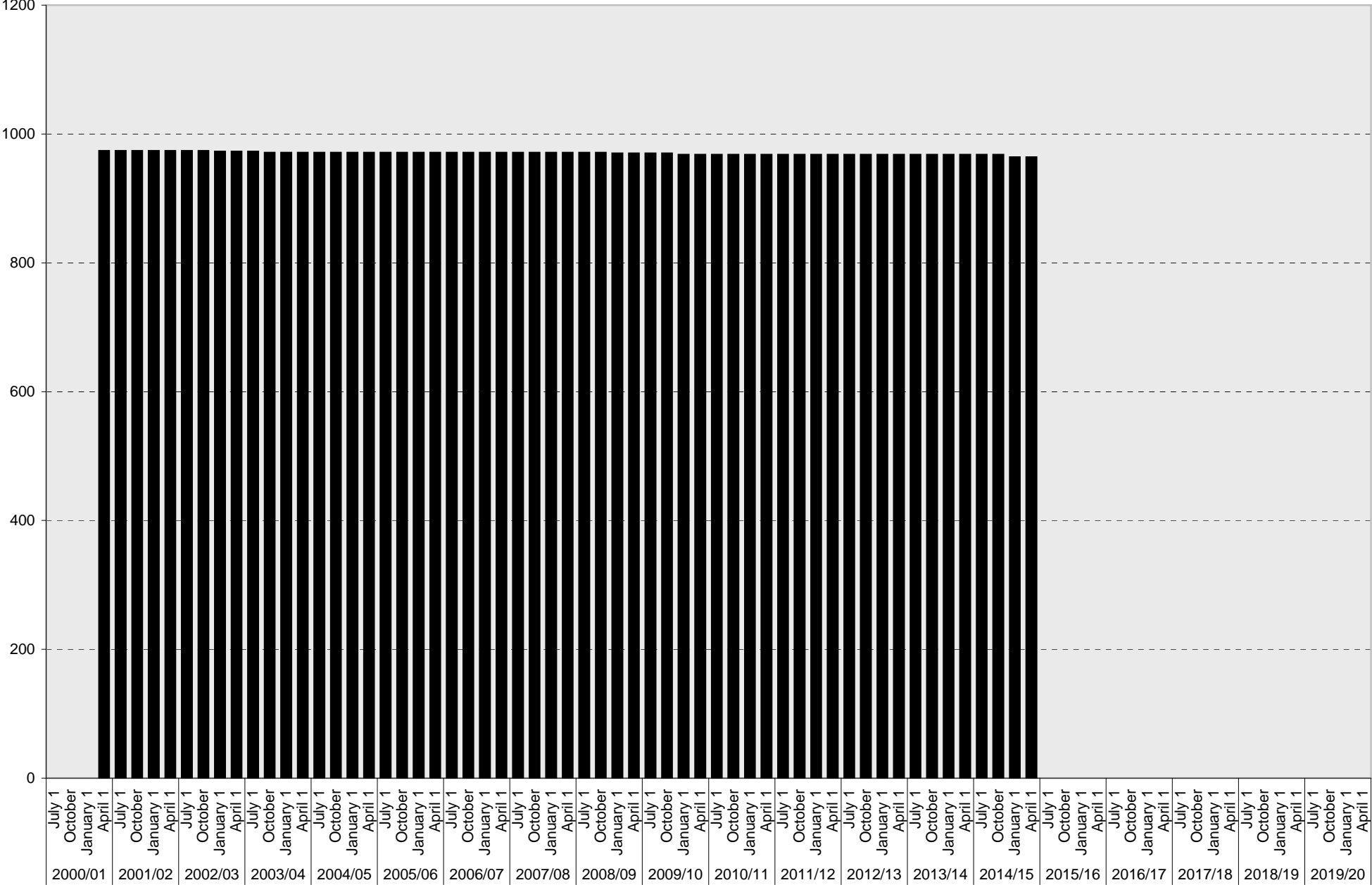
University of California, San Diego Parking Space Inventory

Pangea Structure: UC Vehicle Parking Spaces



University of California, San Diego Parking Space Inventory

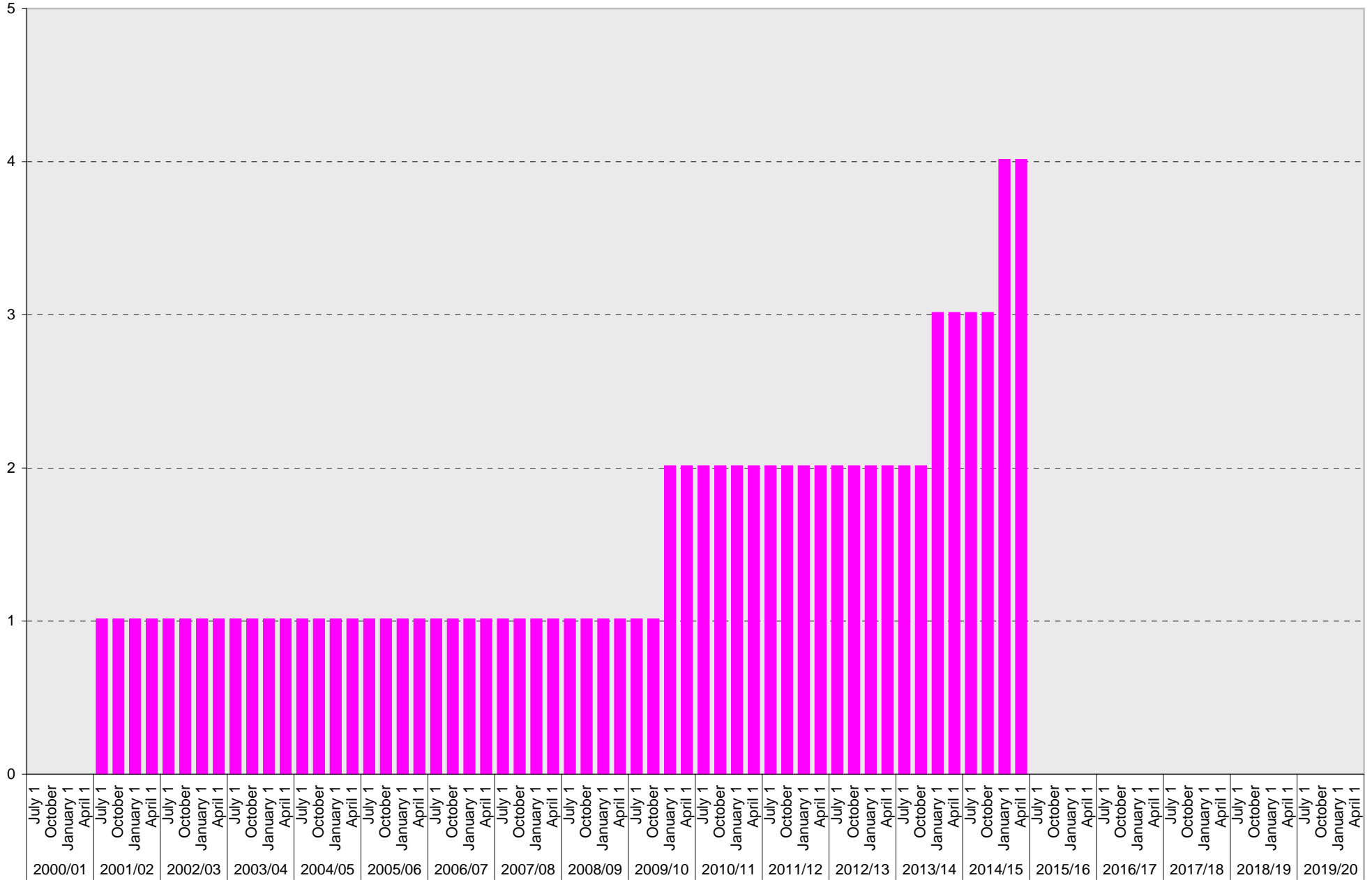
Pangea Structure: Total Parking Spaces



■ Total

University of California, San Diego Parking Space Inventory

Pangea Structure: Motorcycle Parking Sections



■ Motorcycle

University of California, San Diego Parking Space Inventory
Pangea Structure

Date		Parking Spaces										Motorcycle Parking Sections	
		A	B	S	Visitor	Reserved	Allocated	Accessible	UC Vehicle	Service Yard	Loading		Total
2000/01	July 1												
	October 1												
	January 1												
	April 1	160	188	553	52	1		17				971	
2001/02	July 1	160	188	553	52	1		17				971	1
	October 1	107	189	605	52	1		17				971	1
	January 1	107	189	605	52	1		17				971	1
	April 1	107	189	605	52	1		17				971	1
2002/03	July 1	107	189	605	52	1		17				971	1
	October 1	107	189	605	52	1		17				971	1
	January 1	106	189	604	52	1		17	1			970	1
	April 1	106	189	604	52	1		17	1			970	1
2003/04	July 1	106	189	604	52	1		17	1			970	1
	October 1	89	188	603	52	5	1	17	13			968	1
	January 1	89	188	603	52	5	1	17	13			968	1
	April 1	89	188	603	52	5	1	17	13			968	1
2004/05	July 1	89	188	603	52	5	1	17	13			968	1
	October 1	89	188	603	52	5	1	17	13			968	1
	January 1	87	188	603	52	7	1	17	13			968	1
	April 1	87	188	603	52	7	1	17	13			968	1
2005/06	July 1	85	188	603	52	9	1	17	13			968	1
	October 1	85	188	603	52	9	1	17	13			968	1
	January 1	85	188	603	52	9	1	17	13			968	1
	April 1	85	188	603	52	9	1	17	13			968	1
2006/07	July 1	84	188	603	52	10	1	15	15			968	1
	October 1	84	188	603	52	10	1	15	15			968	1
	January 1	83	188	550	105	10	2	15	15			968	1
	April 1	83	188	550	105	10	2	15	15			968	1
2007/08	July 1	84	188	550		9	107	15	15			968	1
	October 1	85	188	550		8	107	15	15			968	1
	January 1	85	188	550		8	107	15	15			968	1
	April 1	85	188	550		8	107	15	15			968	1
2008/09	July 1	85	188	550	105	8	2	15	15			968	1
	October 1	85	188	550	105	8	2	15	15			968	1
	January 1	85	188	550	104	8	2	15	15			967	1
	April 1	85	188	550	104	8	2	15	15			967	1
2009/10	July 1	83	188	550	104	10	2	15	15			967	1
	October 1	78	188	550	121	10	2	15	3			967	1
	January 1	77	188	550	120	10	2	15	3			965	2
	April 1	77	188	550	120	10	2	15	3			965	2

