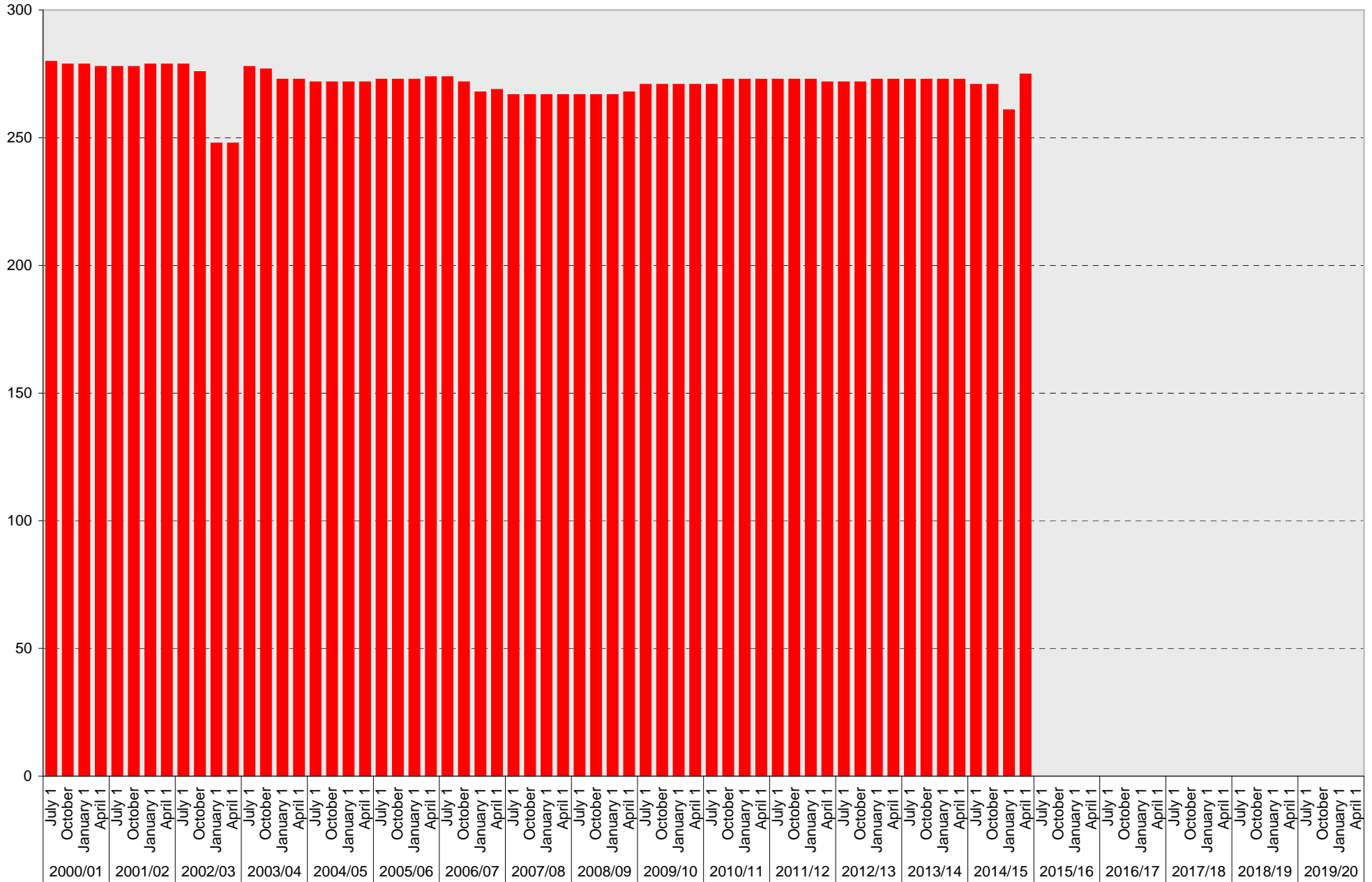
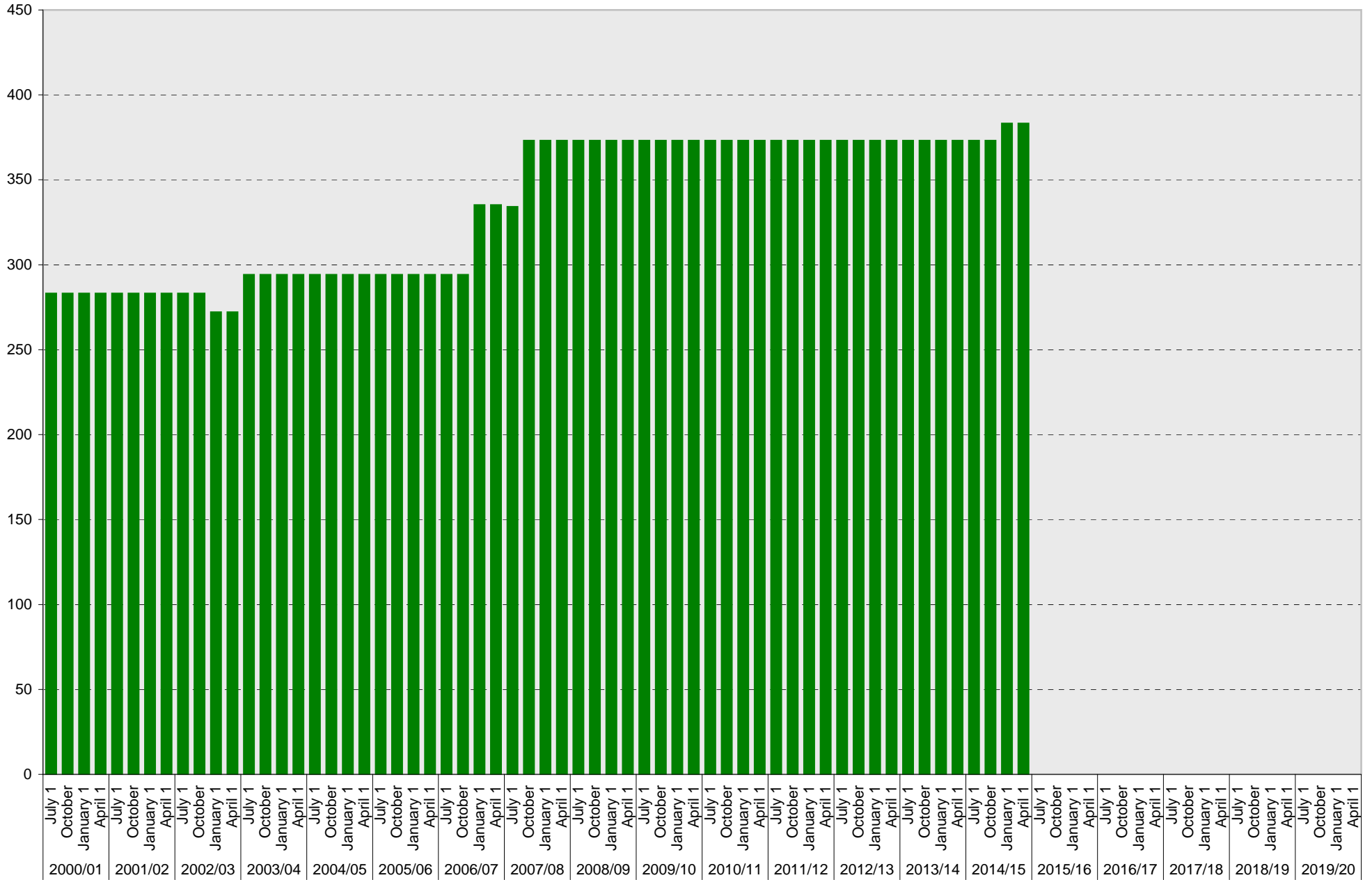


University of California, San Diego Parking Space Inventory

Muir College: A Parking Spaces



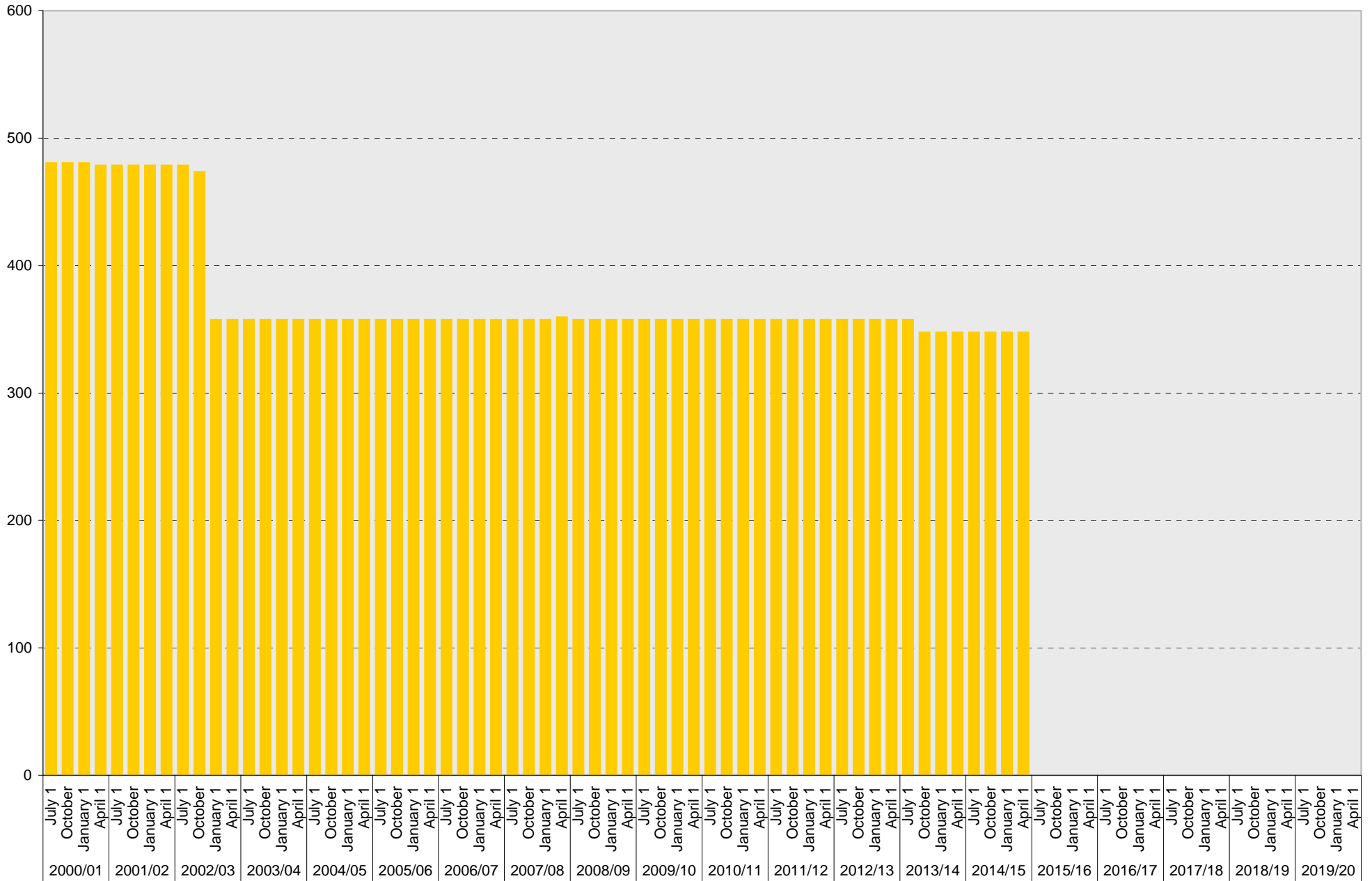
University of California, San Diego Parking Space Inventory Muir College: B Parking Spaces



■ B

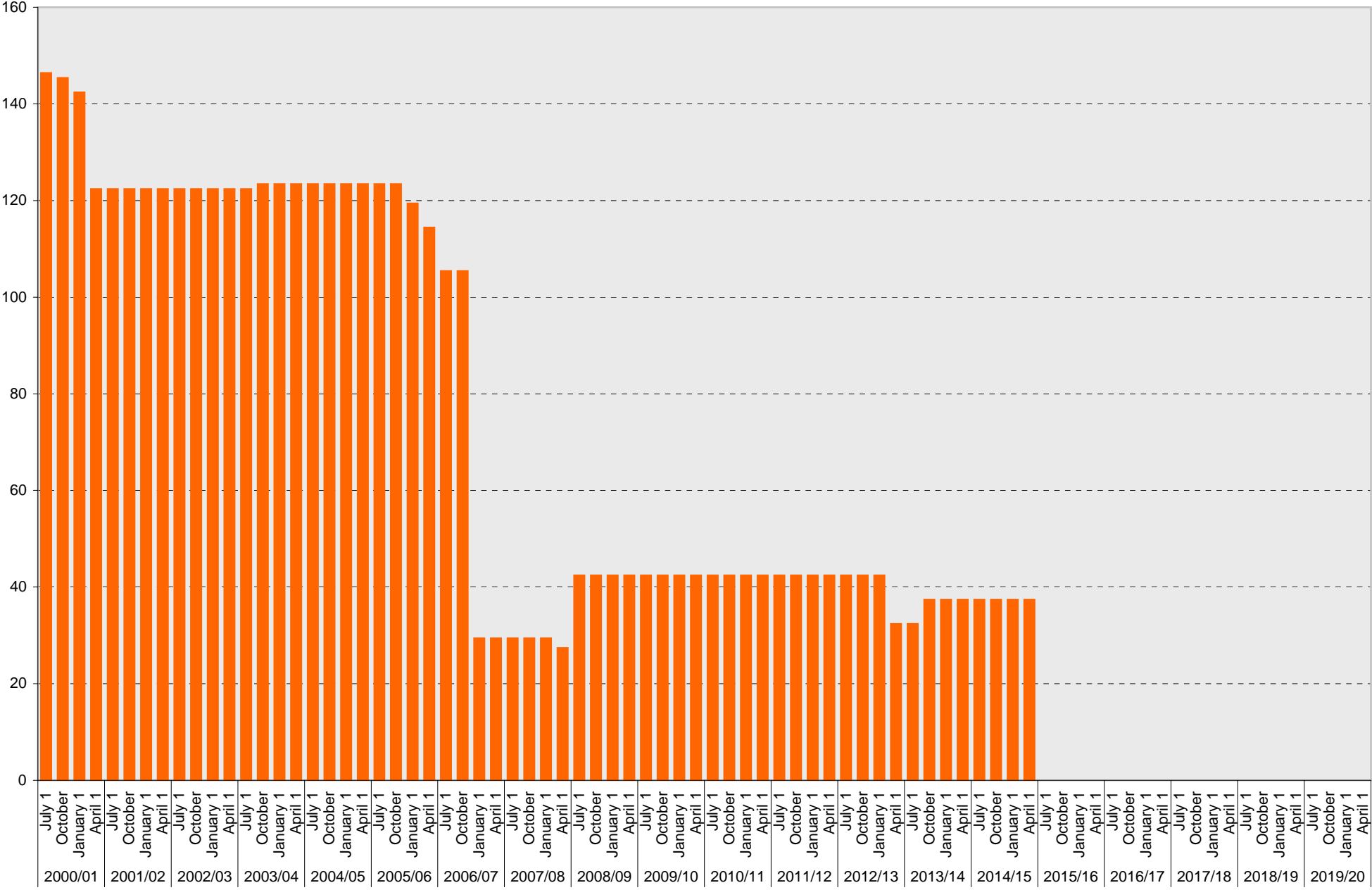
University of California, San Diego Parking Space Inventory

Muir College: S Parking Spaces



■ S

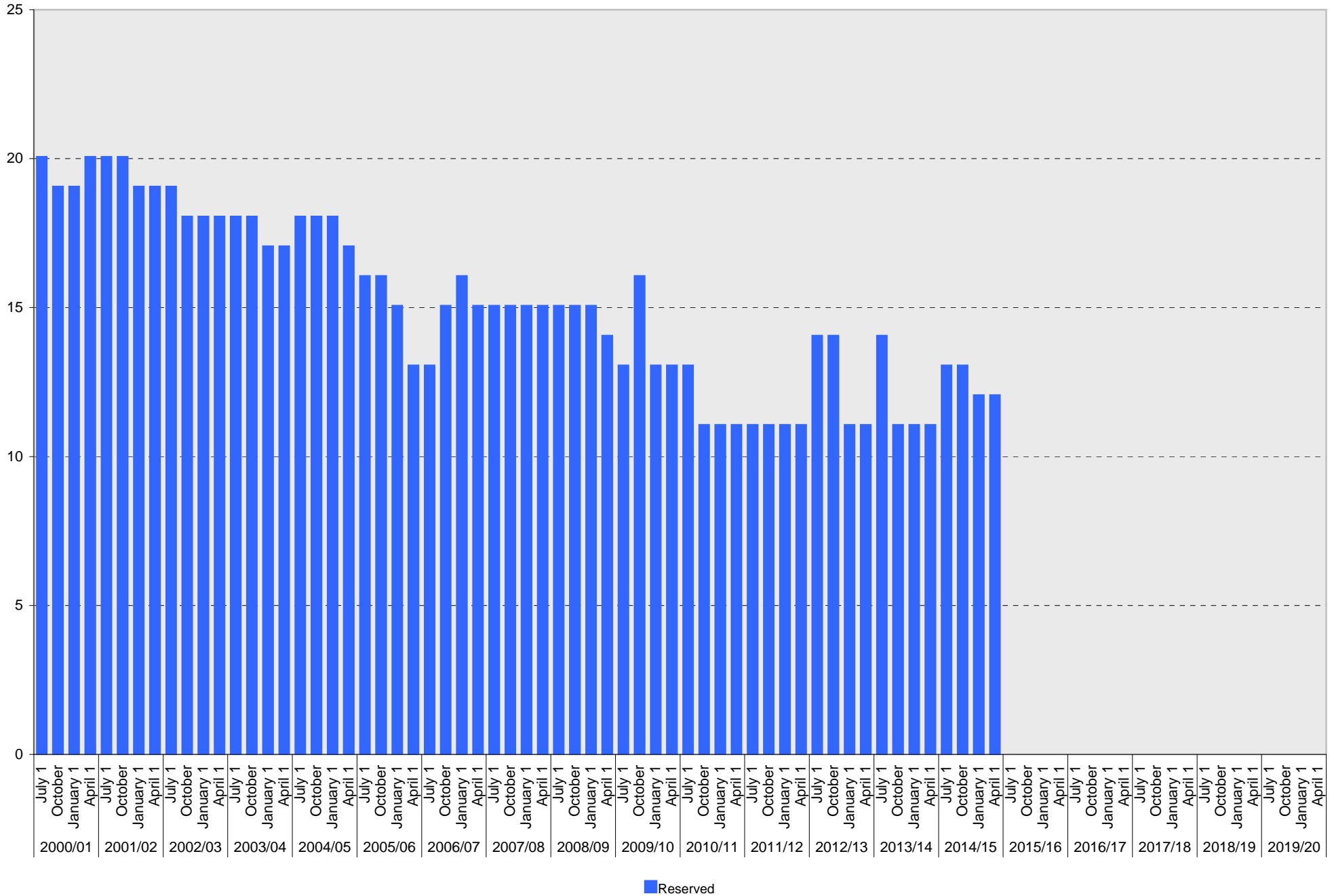
University of California, San Diego Parking Space Inventory
Muir College: Visitor Parking Spaces



Visitor

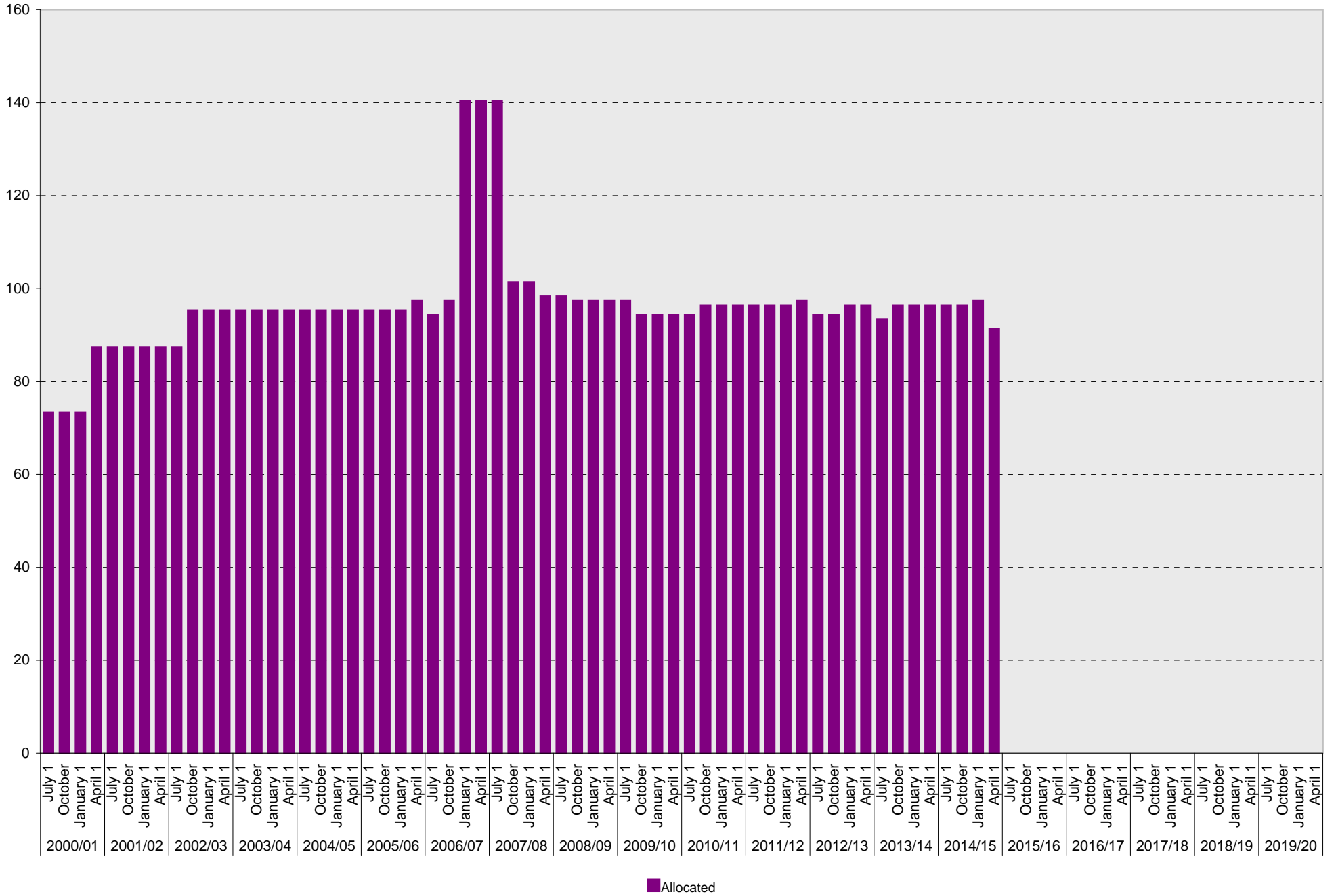
University of California, San Diego Parking Space Inventory

Muir College: Reserved Parking Spaces



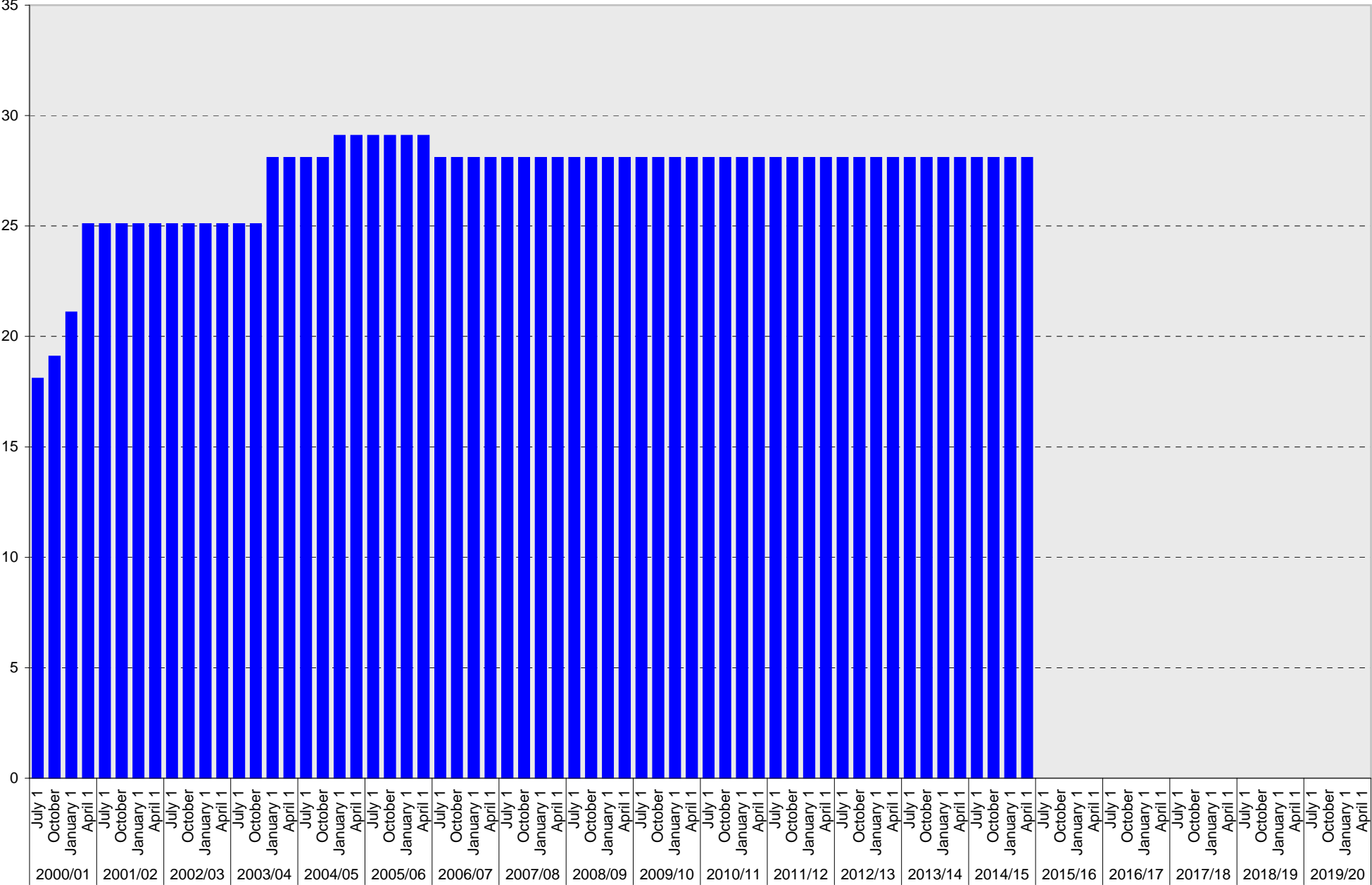
University of California, San Diego Parking Space Inventory

Muir College: Allocated Parking Spaces



University of California, San Diego Parking Space Inventory

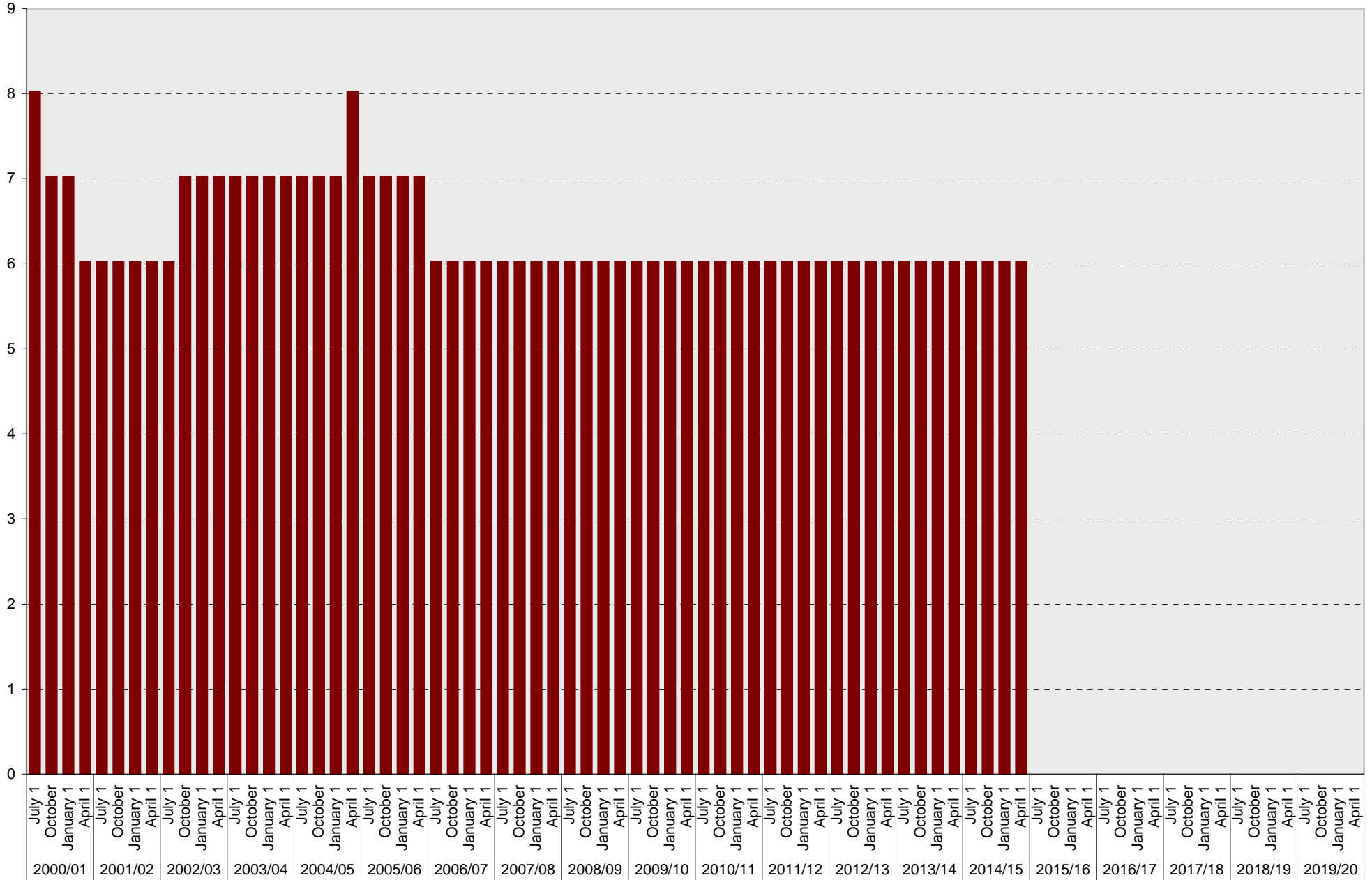
Muir College: Accessible Parking Spaces



■ Accessible

University of California, San Diego Parking Space Inventory

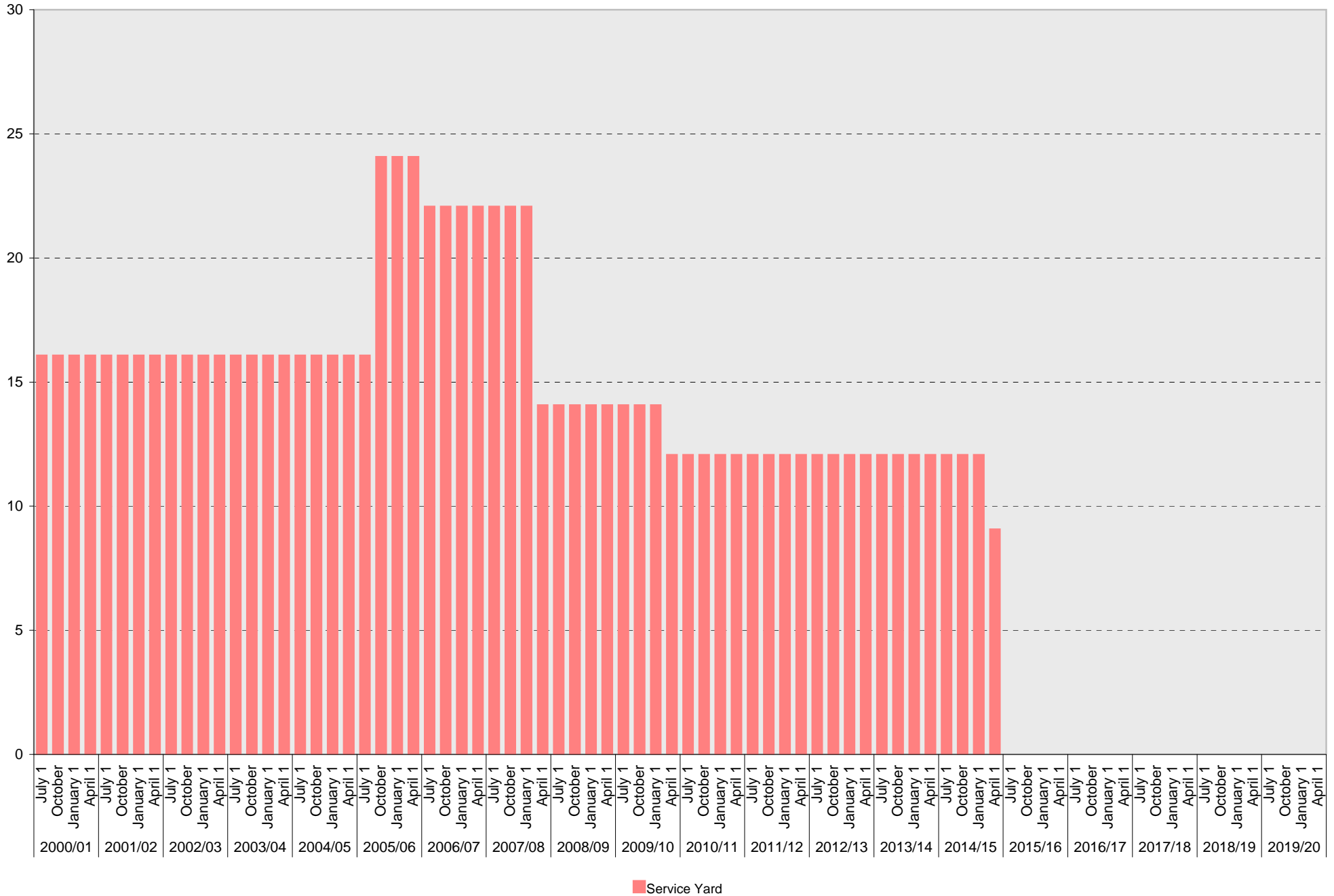
Muir College: UC Vehicle Parking Spaces



■ UC Vehicle

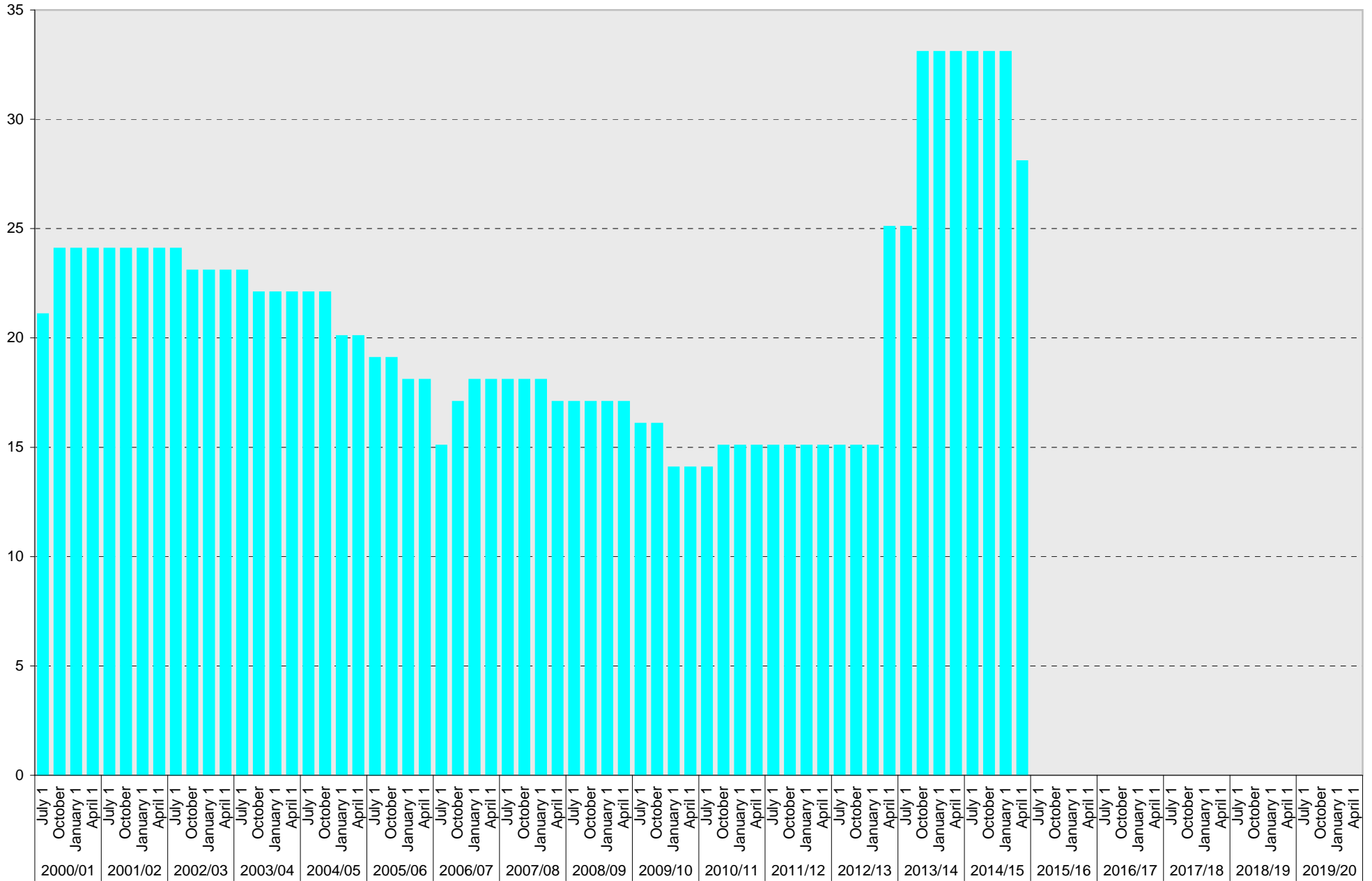
University of California, San Diego Parking Space Inventory

Muir College: Service Yard Parking Spaces



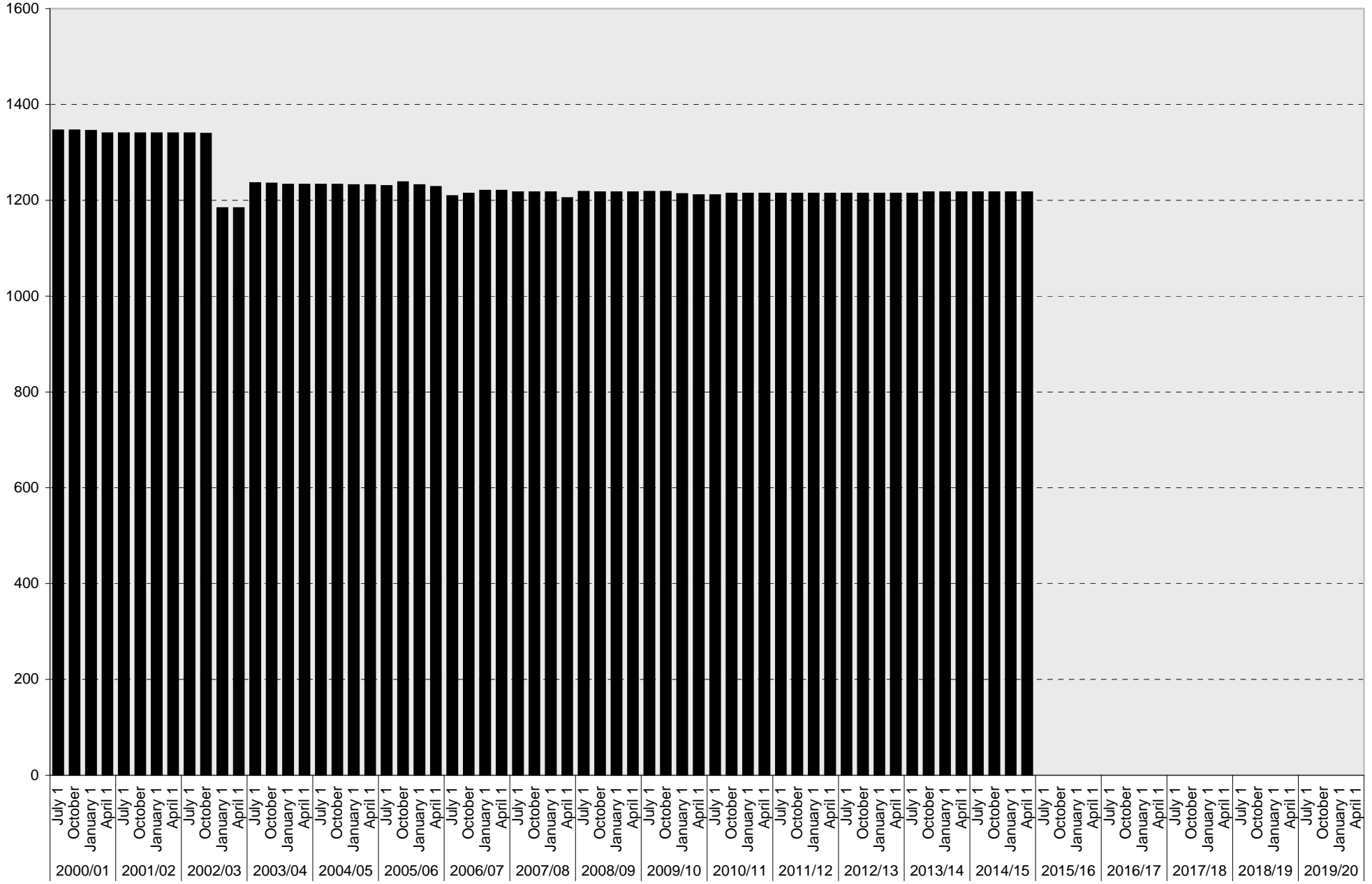
University of California, San Diego Parking Space Inventory

Muir College: Loading Parking Spaces



University of California, San Diego Parking Space Inventory

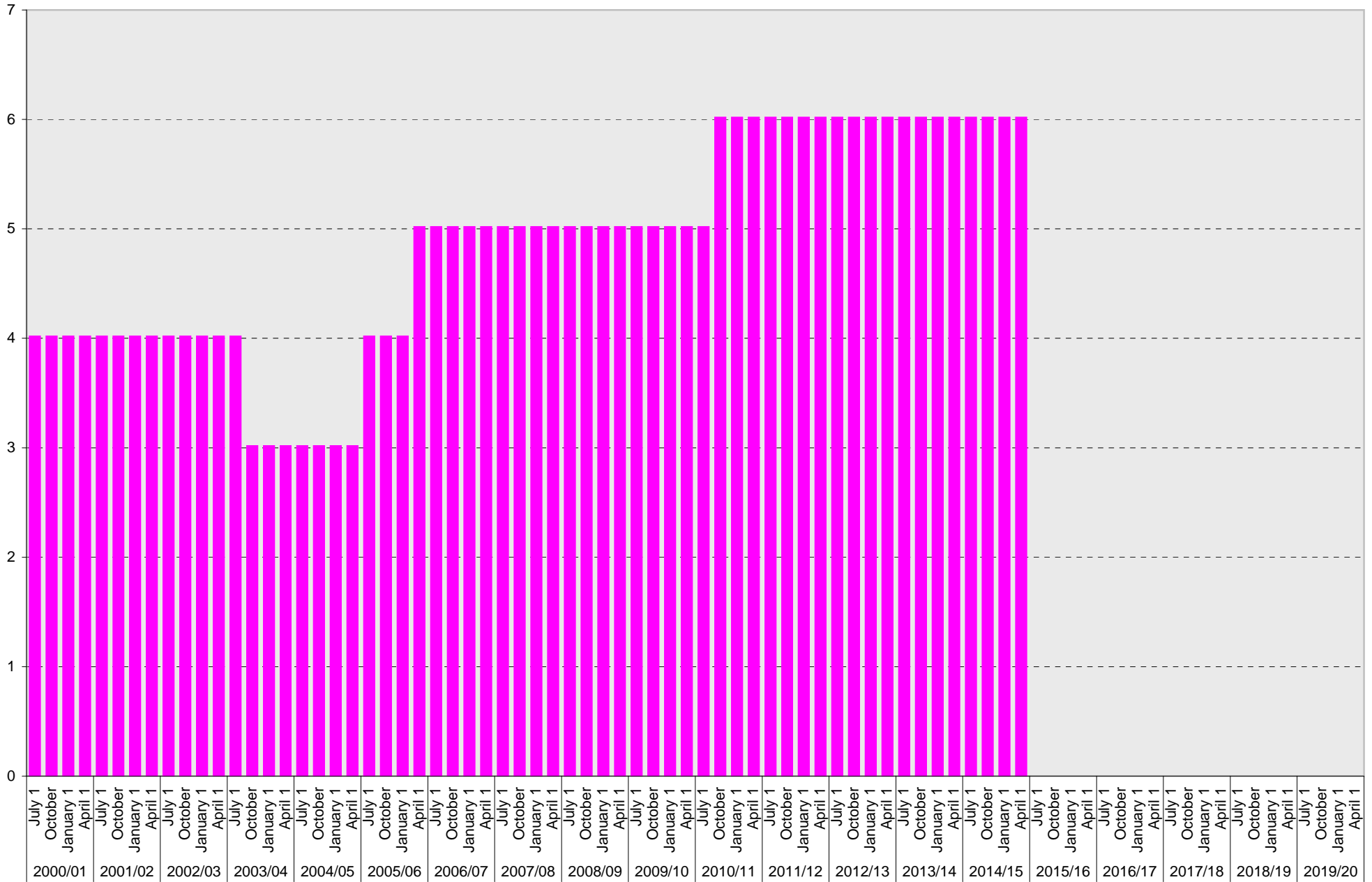
Muir College: Total Parking Spaces



■ Total

University of California, San Diego Parking Space Inventory

Muir College: Motorcycle Parking Sections



■ Motorcycle

University of California, San Diego Parking Space Inventory
Muir College

Date		Parking Spaces											Motorcycle Parking Sections
		A	B	S	Visitor	Reserved	Allocated	Accessible	UC Vehicle	Service Yard	Loading	Total	
2000/01	July 1	279	282	479	146	20	73	18	8	16	21	1342	4
	October 1	278	282	479	145	19	73	19	7	16	24	1342	4
	January 1	278	282	479	142	19	73	21	7	16	24	1341	4
	April 1	277	282	477	122	20	87	25	6	16	24	1336	4
2001/02	July 1	277	282	477	122	20	87	25	6	16	24	1336	4
	October 1	277	282	477	122	20	87	25	6	16	24	1336	4
	January 1	278	282	477	122	19	87	25	6	16	24	1336	4
	April 1	278	282	477	122	19	87	25	6	16	24	1336	4
2002/03	July 1	278	282	477	122	19	87	25	6	16	24	1336	4
	October 1	275	282	472	122	18	95	25	7	16	23	1335	4
	January 1	247	271	356	122	18	95	25	7	16	23	1180	4
	April 1	247	271	356	122	18	95	25	7	16	23	1180	4
2003/04	July 1	277	293	356	122	18	95	25	7	16	23	1232	4
	October 1	276	293	356	123	18	95	25	7	16	22	1231	3
	January 1	272	293	356	123	17	95	28	7	16	22	1229	3
	April 1	272	293	356	123	17	95	28	7	16	22	1229	3
2004/05	July 1	271	293	356	123	18	95	28	7	16	22	1229	3
	October 1	271	293	356	123	18	95	28	7	16	22	1229	3
	January 1	271	293	356	123	18	95	29	7	16	20	1228	3
	April 1	271	293	356	123	17	95	29	8	16	20	1228	3
2005/06	July 1	272	293	356	123	16	95	29	7	16	19	1226	4
	October 1	272	293	356	123	16	95	29	7	24	19	1234	4
	January 1	272	293	356	119	15	95	29	7	24	18	1228	4
	April 1	273	293	356	114	13	97	29	7	24	18	1224	5
2006/07	July 1	273	293	356	105	13	94	28	6	22	15	1205	5
	October 1	271	293	356	105	15	97	28	6	22	17	1210	5
	January 1	267	334	356	29	16	140	28	6	22	18	1216	5
	April 1	268	334	356	29	15	140	28	6	22	18	1216	5
2007/08	July 1	266	333	356	29	15	140	28	6	22	18	1213	5
	October 1	266	372	356	29	15	101	28	6	22	18	1213	5
	January 1	266	372	356	29	15	101	28	6	22	18	1213	5
	April 1	266	372	358	27	15	98	28	6	14	17	1201	5
2008/09	July 1	266	372	356	42	15	98	28	6	14	17	1214	5
	October 1	266	372	356	42	15	97	28	6	14	17	1213	5
	January 1	266	372	356	42	15	97	28	6	14	17	1213	5
	April 1	267	372	356	42	14	97	28	6	14	17	1213	5
2009/10	July 1	270	372	356	42	13	97	28	6	14	16	1214	5
	October 1	270	372	356	42	16	94	28	6	14	16	1214	5
	January 1	270	372	356	42	13	94	28	6	14	14	1209	5
	April 1	270	372	356	42	13	94	28	6	12	14	1207	5

