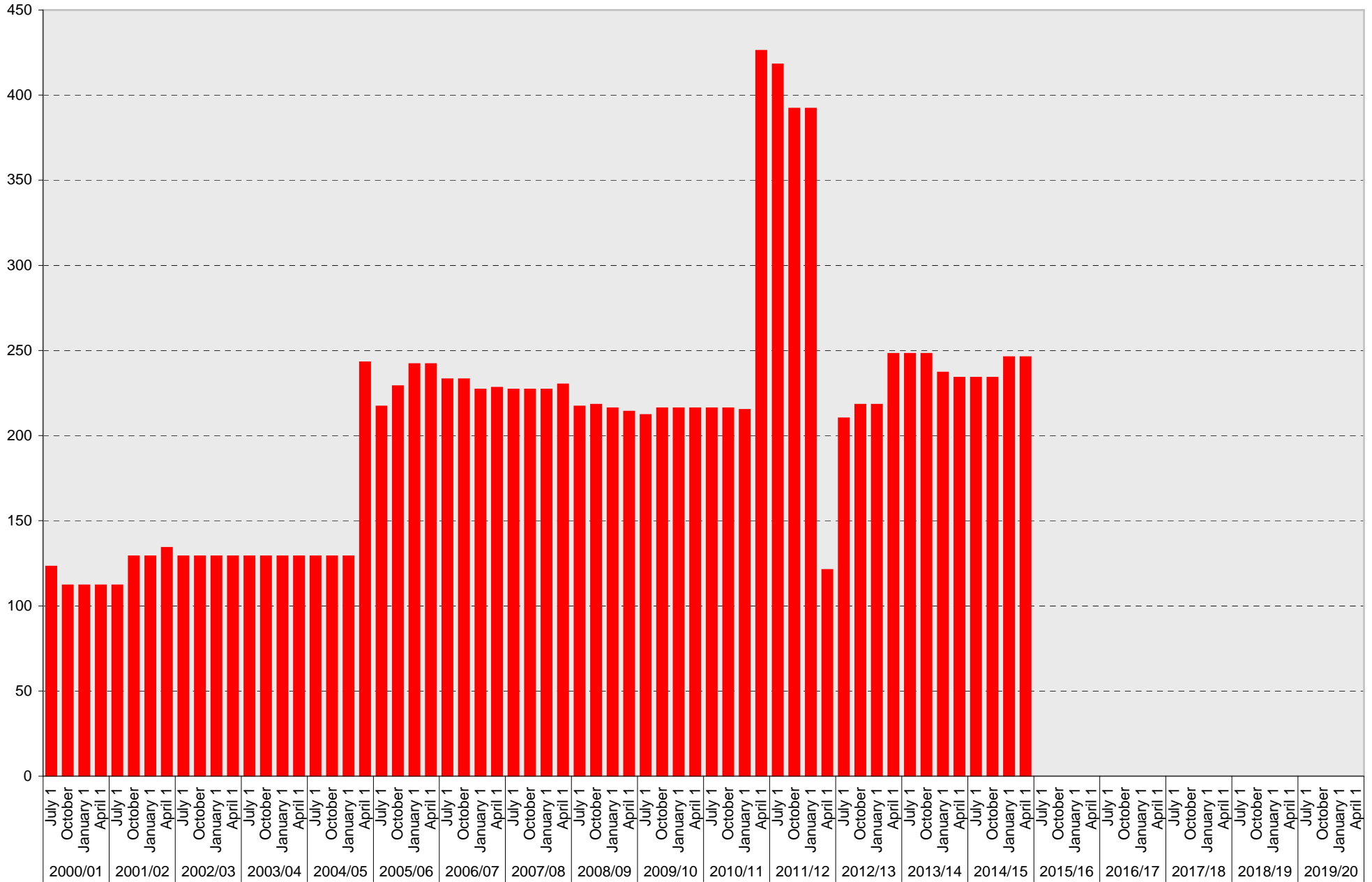


University of California, San Diego Parking Space Inventory

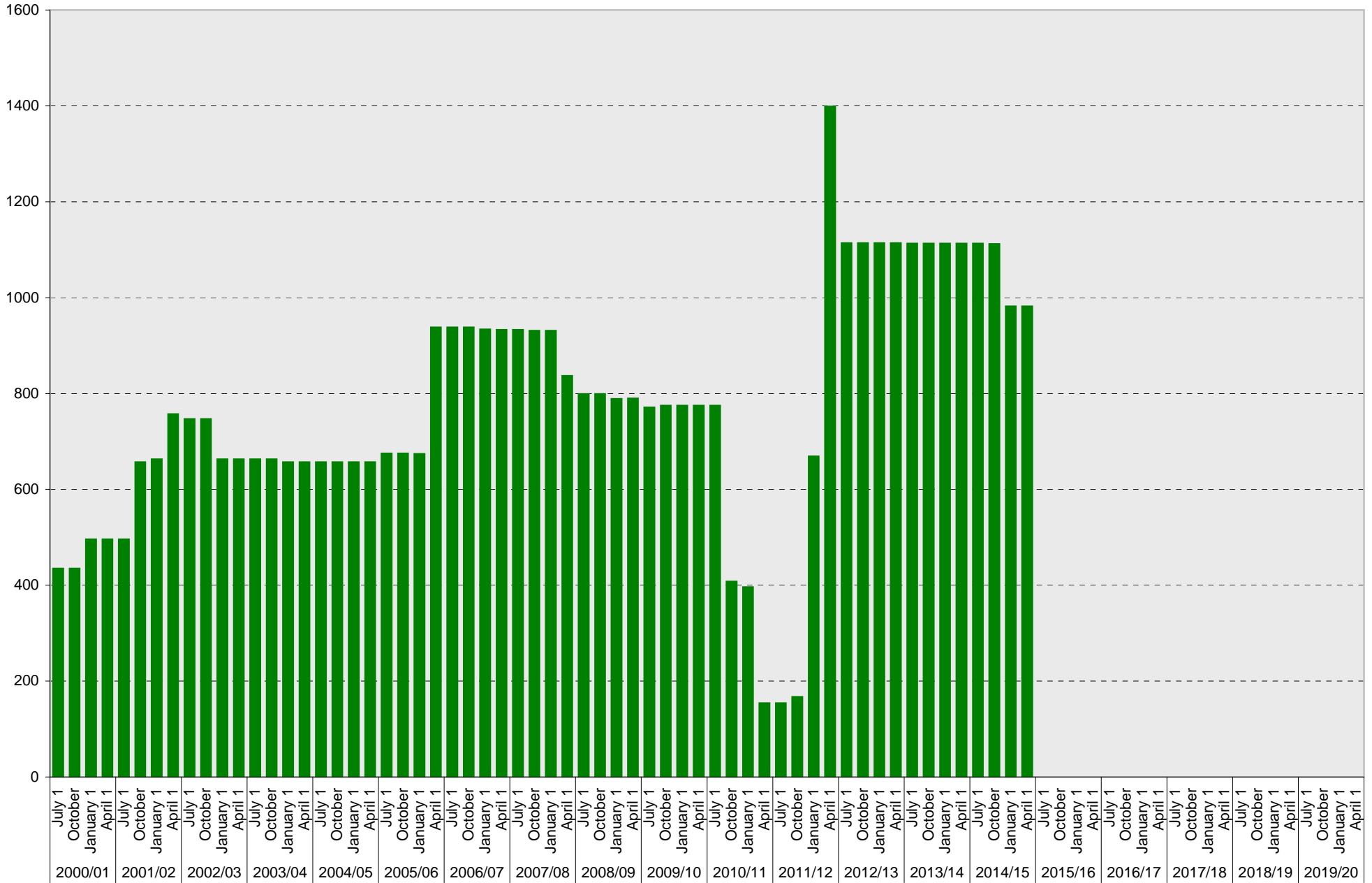
Health Sciences: A Parking Spaces



■ A

University of California, San Diego Parking Space Inventory

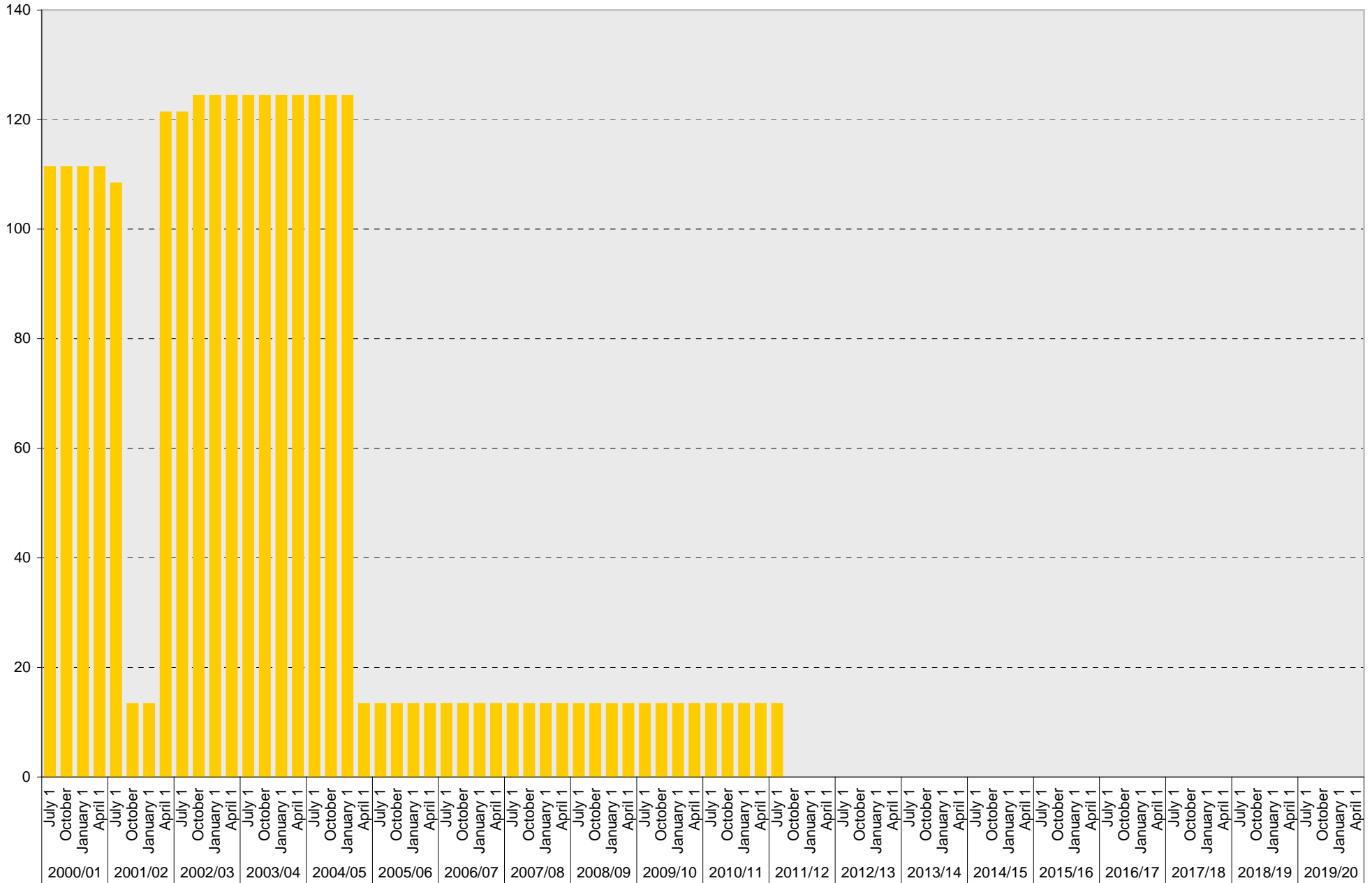
Health Sciences: B Parking Spaces



■ B

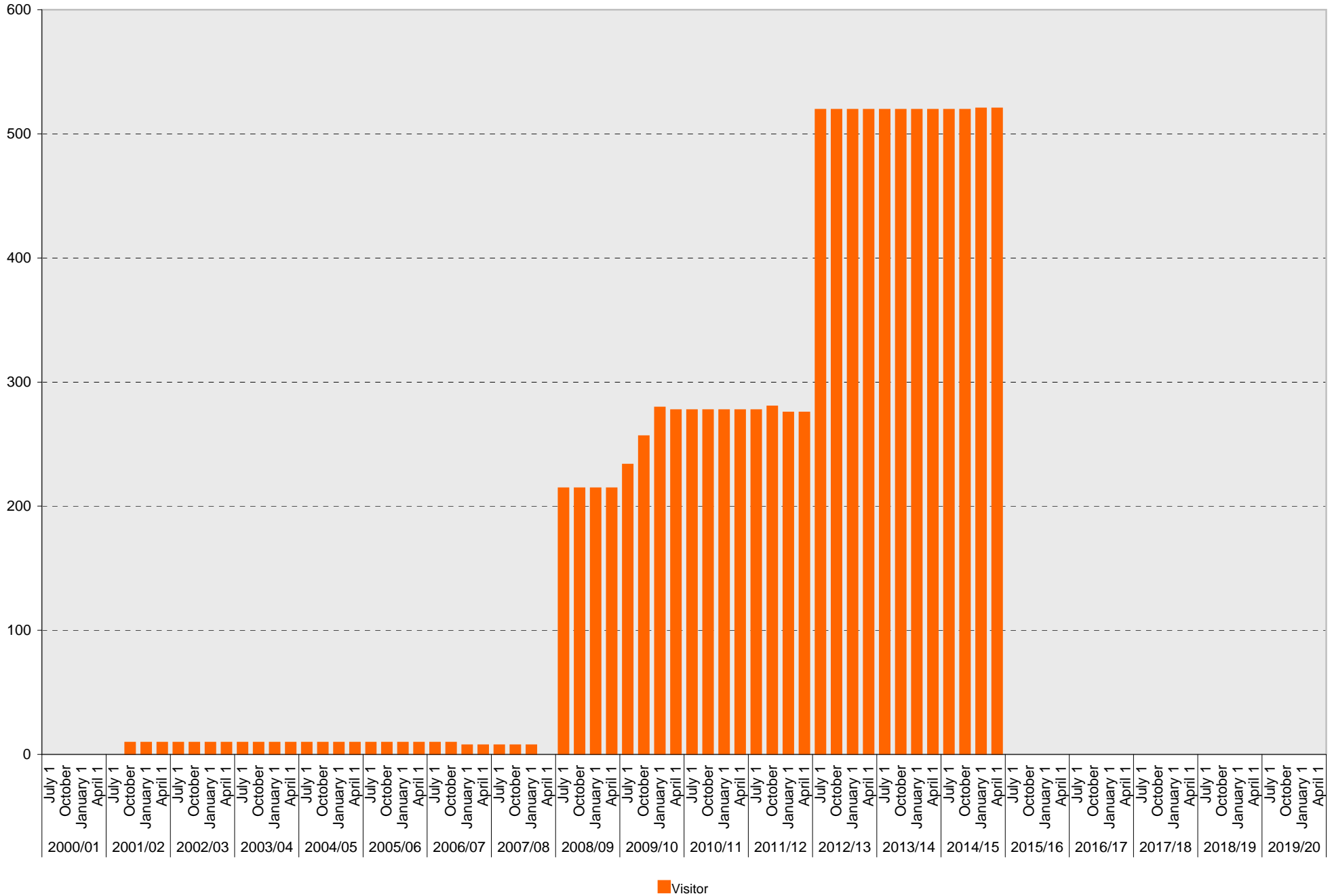
University of California, San Diego Parking Space Inventory

Health Sciences: S Parking Spaces



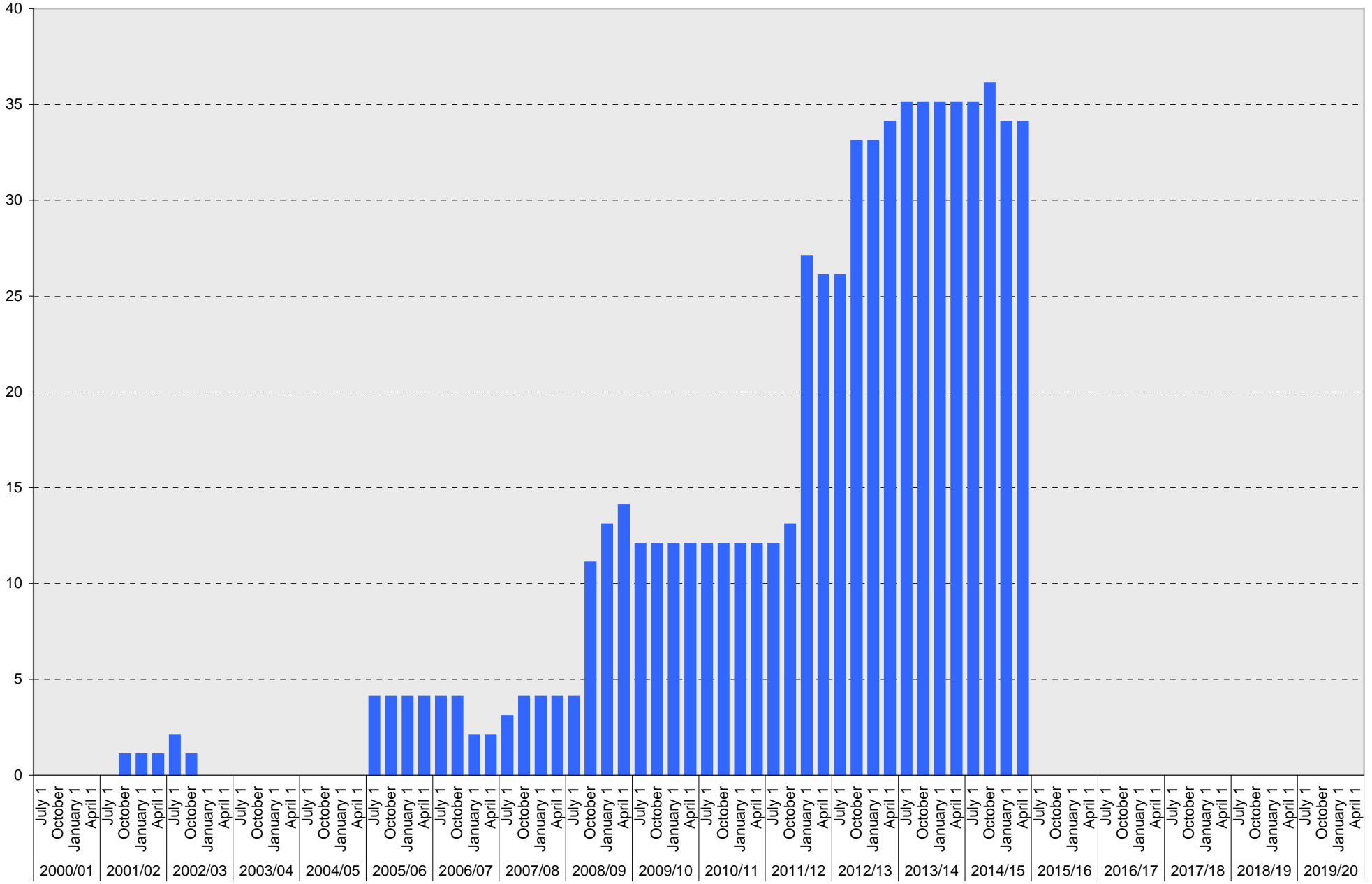
University of California, San Diego Parking Space Inventory

Health Sciences: Visitor Parking Spaces



University of California, San Diego Parking Space Inventory

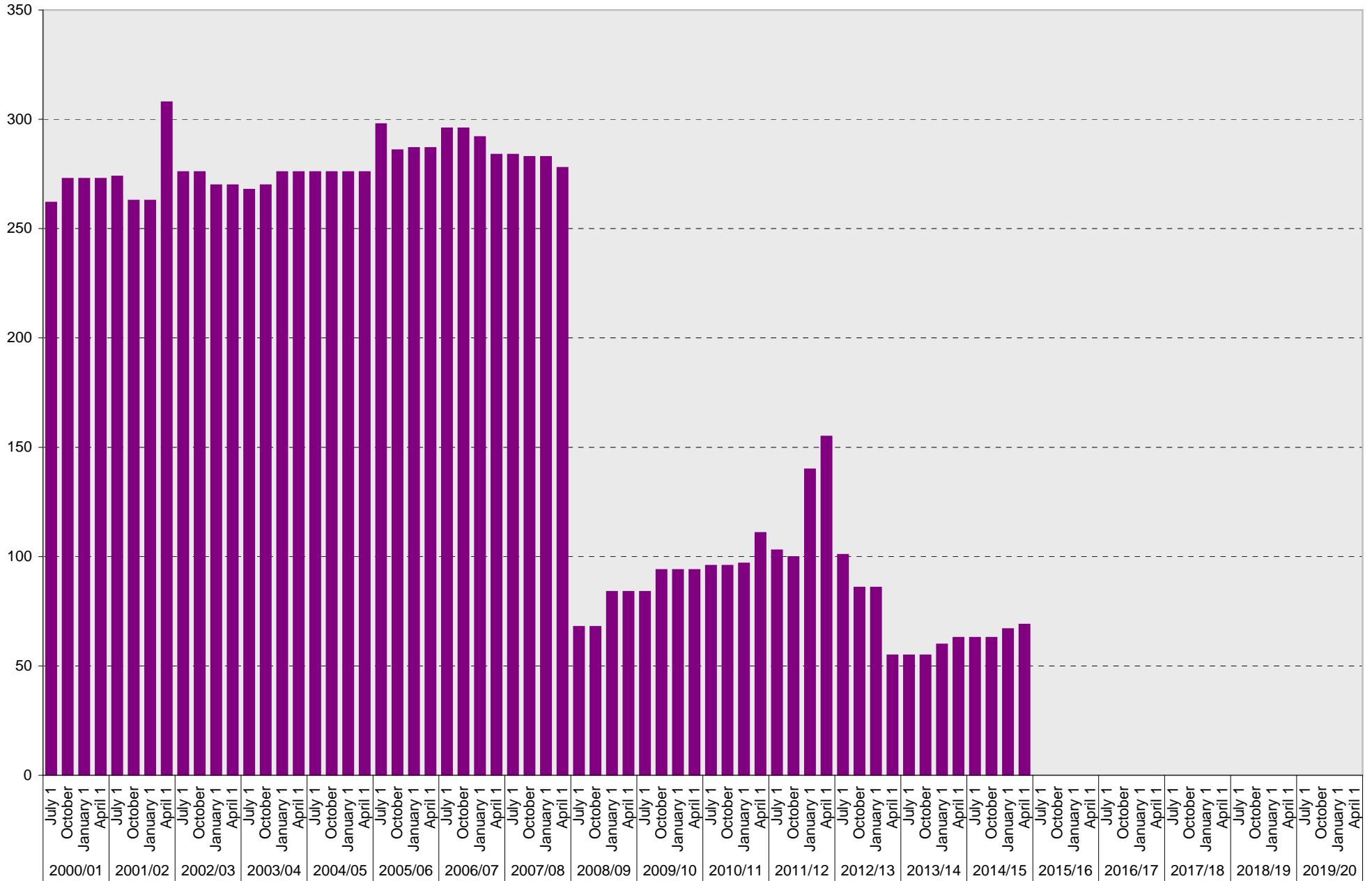
Health Sciences: Reserved Parking Spaces



■ Reserved

University of California, San Diego Parking Space Inventory

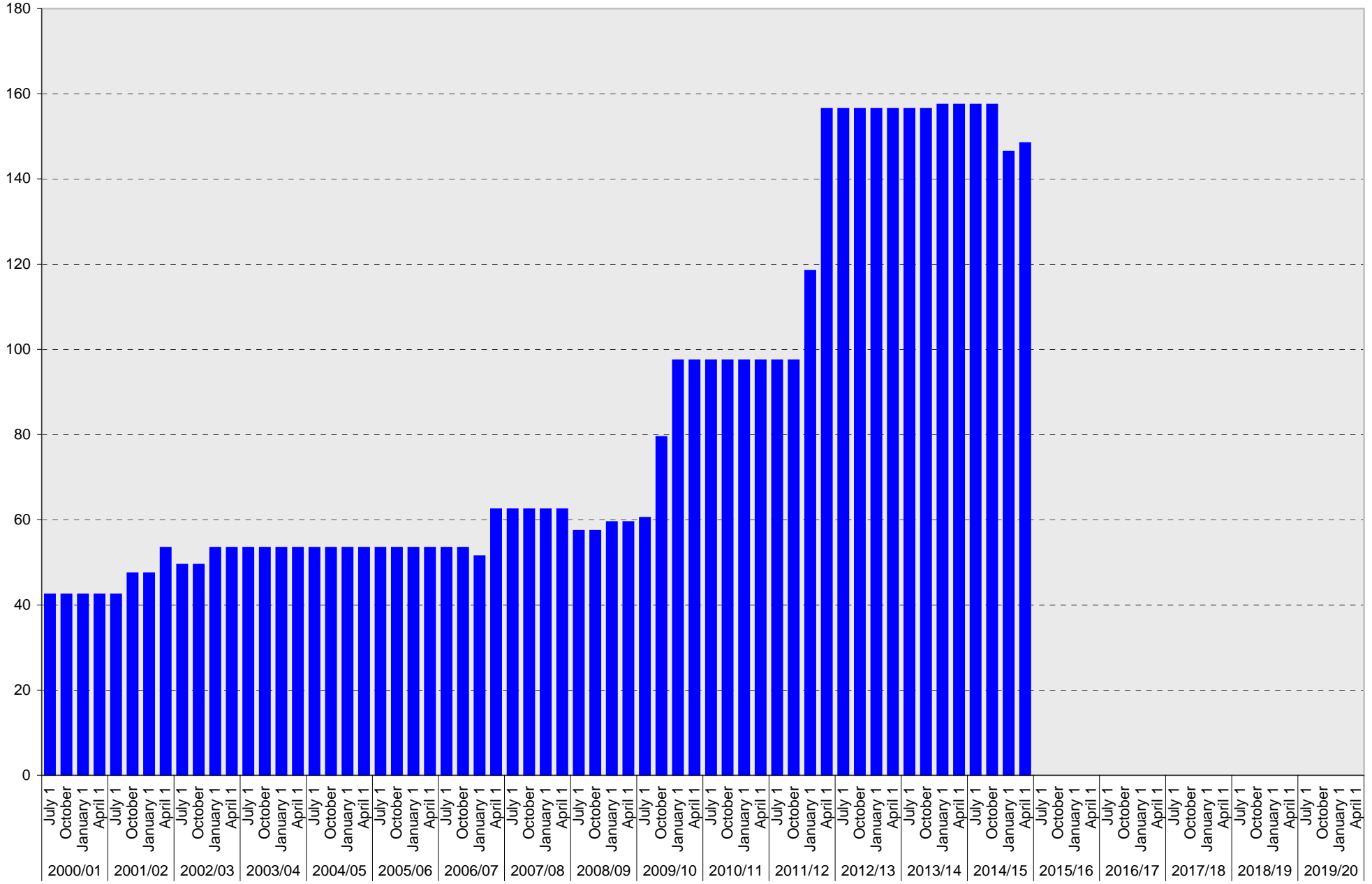
Health Sciences: Allocated Parking Spaces



■ Allocated

University of California, San Diego Parking Space Inventory

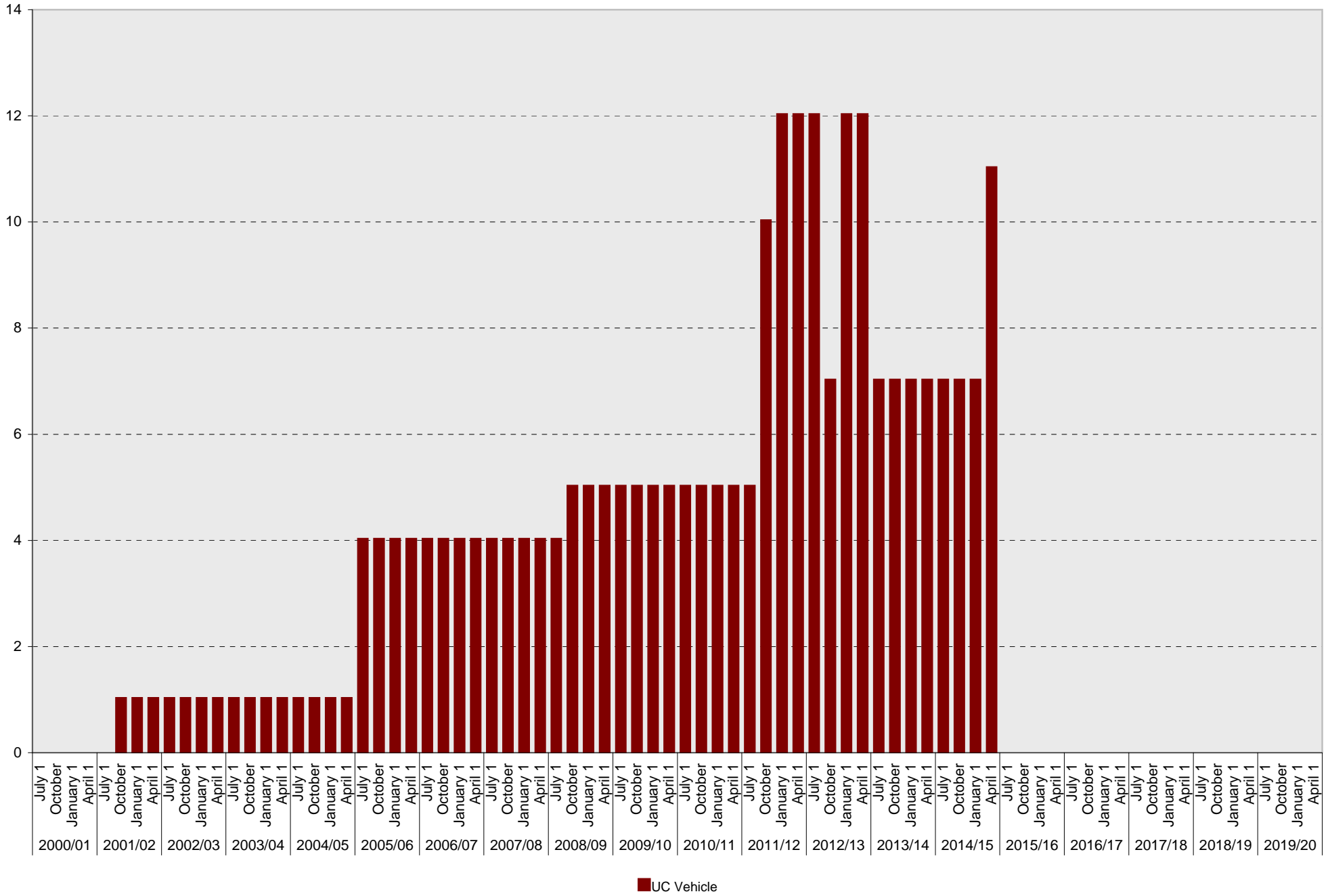
Health Sciences: Accessible Parking Spaces



■ Accessible

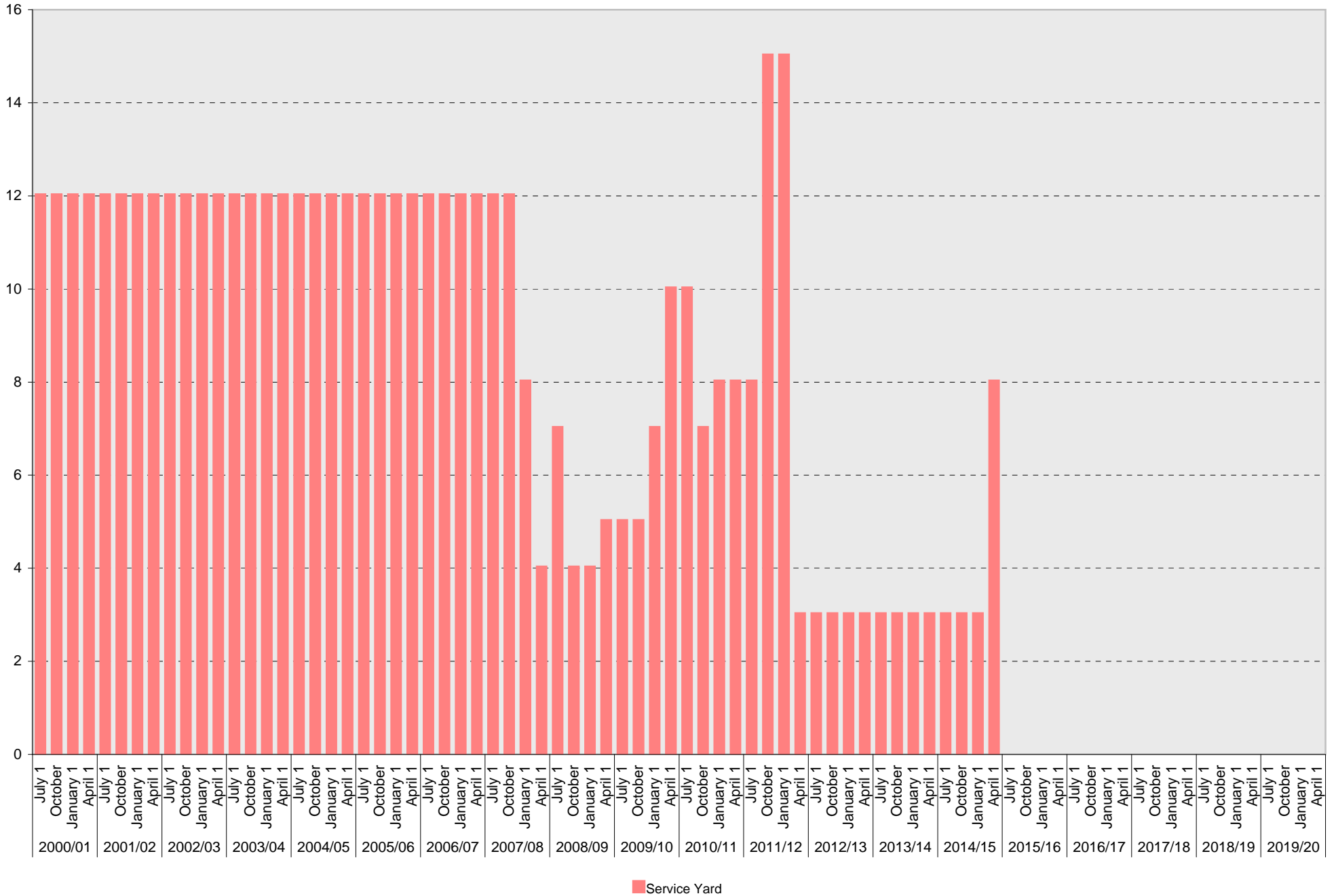
University of California, San Diego Parking Space Inventory

Health Sciences: UC Vehicle Parking Spaces



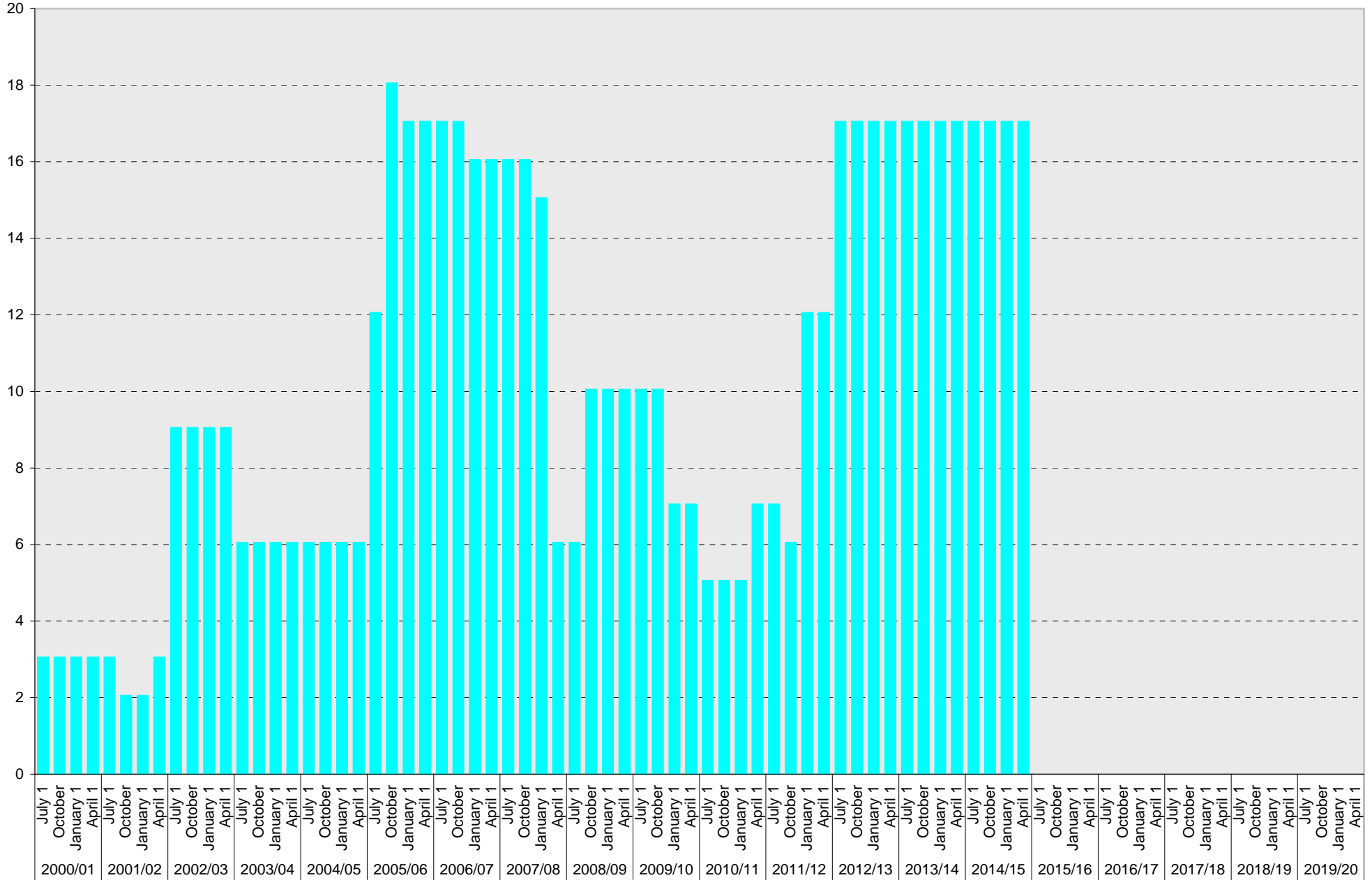
University of California, San Diego Parking Space Inventory

Health Sciences: Service Yard Parking Spaces



University of California, San Diego Parking Space Inventory

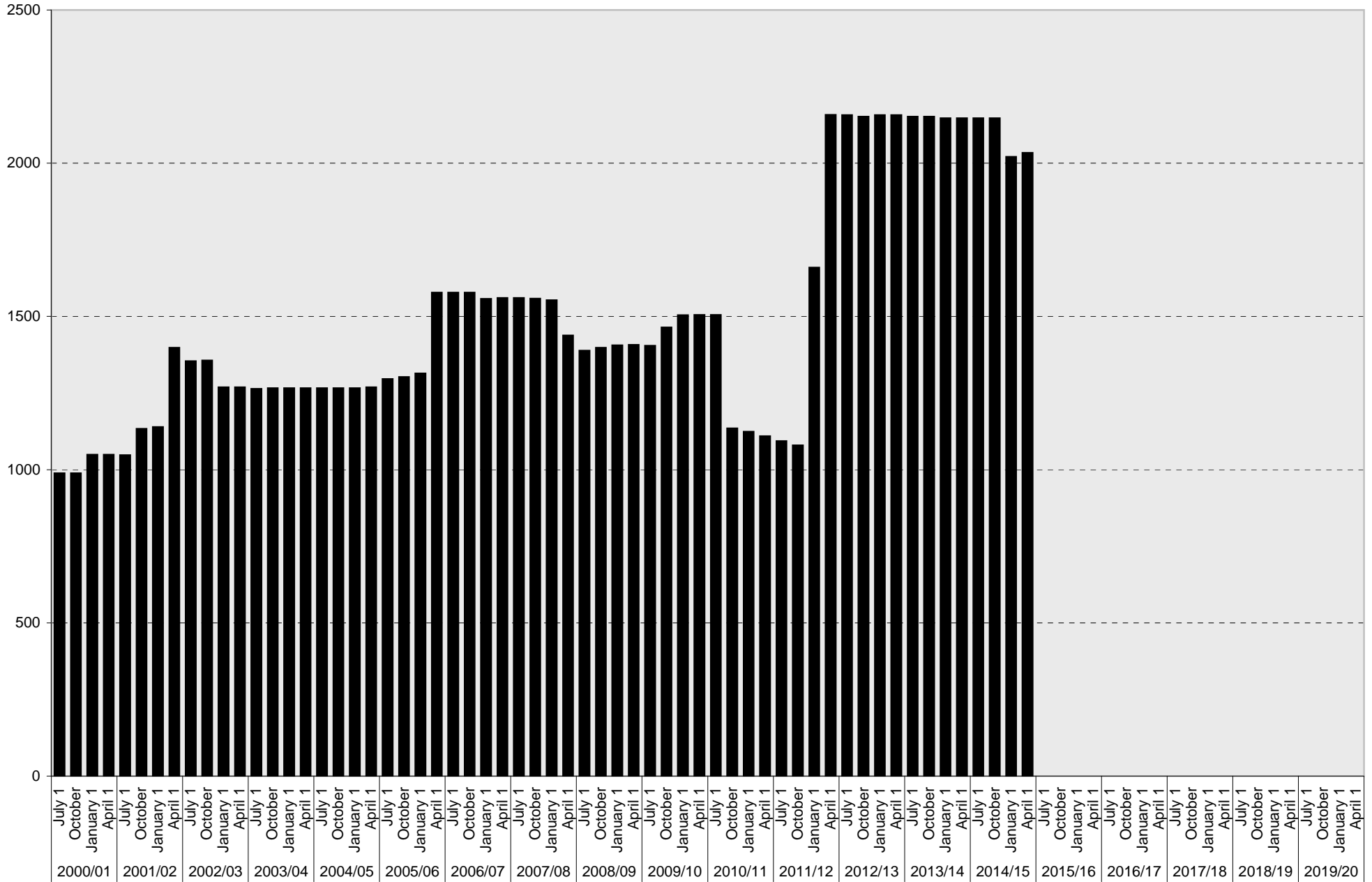
Health Sciences: Loading Parking Spaces



■ Loading

University of California, San Diego Parking Space Inventory

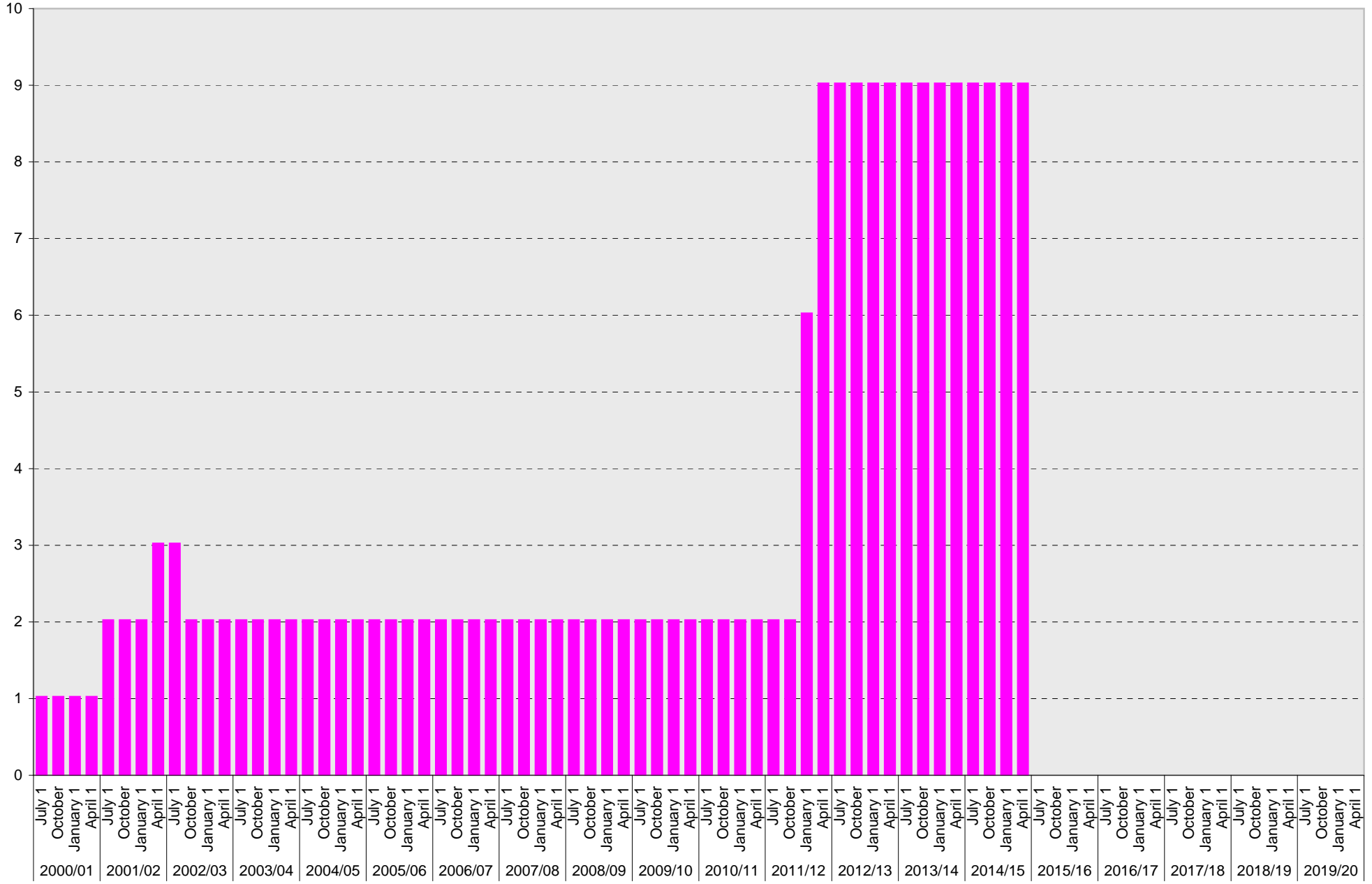
Health Sciences: Total Parking Spaces



■ Total

University of California, San Diego Parking Space Inventory

Health Sciences: Motorcycle Parking Sections



■ Motorcycle

University of California, San Diego Parking Space Inventory
Health Sciences

Date		Parking Spaces										Motorcycle Parking Sections	
		A	B	S	Visitor	Reserved	Allocated	Accessible	UC Vehicle	Service Yard	Loading		Total
2000/01	July 1	122	431	111			261	42		12	3	982	1
	October 1	111	431	111			272	42		12	3	982	1
	January 1	111	492	111			272	42		12	3	1043	1
	April 1	111	492	111			272	42		12	3	1043	1
2001/02	July 1	111	492	108			273	42		12	3	1041	2
	October 1	128	653	13	8	1	262	47	1	12	2	1127	2
	January 1	128	659	13	8	1	262	47	1	12	2	1133	2
	April 1	133	753	121	8	1	307	53	1	12	3	1392	3
2002/03	July 1	128	743	121	8	2	275	49	1	12	9	1348	3
	October 1	128	743	124	8	1	275	49	1	12	9	1350	2
	January 1	128	659	124	8		269	53	1	12	9	1263	2
	April 1	128	659	124	8		269	53	1	12	9	1263	2
2003/04	July 1	128	659	124	8		267	53	1	12	6	1258	2
	October 1	128	659	124	8		269	53	1	12	6	1260	2
	January 1	128	653	124	8		275	53	1	12	6	1260	2
	April 1	128	653	124	8		275	53	1	12	6	1260	2
2004/05	July 1	128	653	124	8		275	53	1	12	6	1260	2
	October 1	128	653	124	8		275	53	1	12	6	1260	2
	January 1	128	653	124	8		275	53	1	12	6	1260	2
	April 1	242	653	13	8		275	53	1	12	6	1263	2
2005/06	July 1	216	671	13	8	4	297	53	4	12	12	1290	2
	October 1	228	671	13	8	4	285	53	4	12	18	1296	2
	January 1	241	670	13	8	4	286	53	4	12	17	1308	2
	April 1	241	934	13	8	4	286	53	4	12	17	1572	2
2006/07	July 1	232	934	13	8	4	295	53	4	12	17	1572	2
	October 1	232	934	13	8	4	295	53	4	12	17	1572	2
	January 1	226	930	13	6	2	291	51	4	12	16	1551	2
	April 1	227	929	13	6	2	283	62	4	12	16	1554	2
2007/08	July 1	226	929	13	6	3	283	62	4	12	16	1554	2
	October 1	226	927	13	6	4	282	62	4	12	16	1552	2
	January 1	226	927	13	6	4	282	62	4	8	15	1547	2
	April 1	229	833	13		4	277	62	4	4	6	1432	2
2008/09	July 1	216	795	13	213	4	67	57	4	7	6	1382	2
	October 1	217	795	13	213	11	67	57	5	4	10	1392	2
	January 1	215	785	13	213	13	83	59	5	4	10	1400	2
	April 1	213	786	13	213	14	83	59	5	5	10	1401	2
2009/10	July 1	211	767	13	232	12	83	60	5	5	10	1398	2
	October 1	215	771	13	255	12	93	79	5	5	10	1458	2
	January 1	215	771	13	278	12	93	97	5	7	7	1498	2
	April 1	215	771	13	276	12	93	97	5	10	7	1499	2

