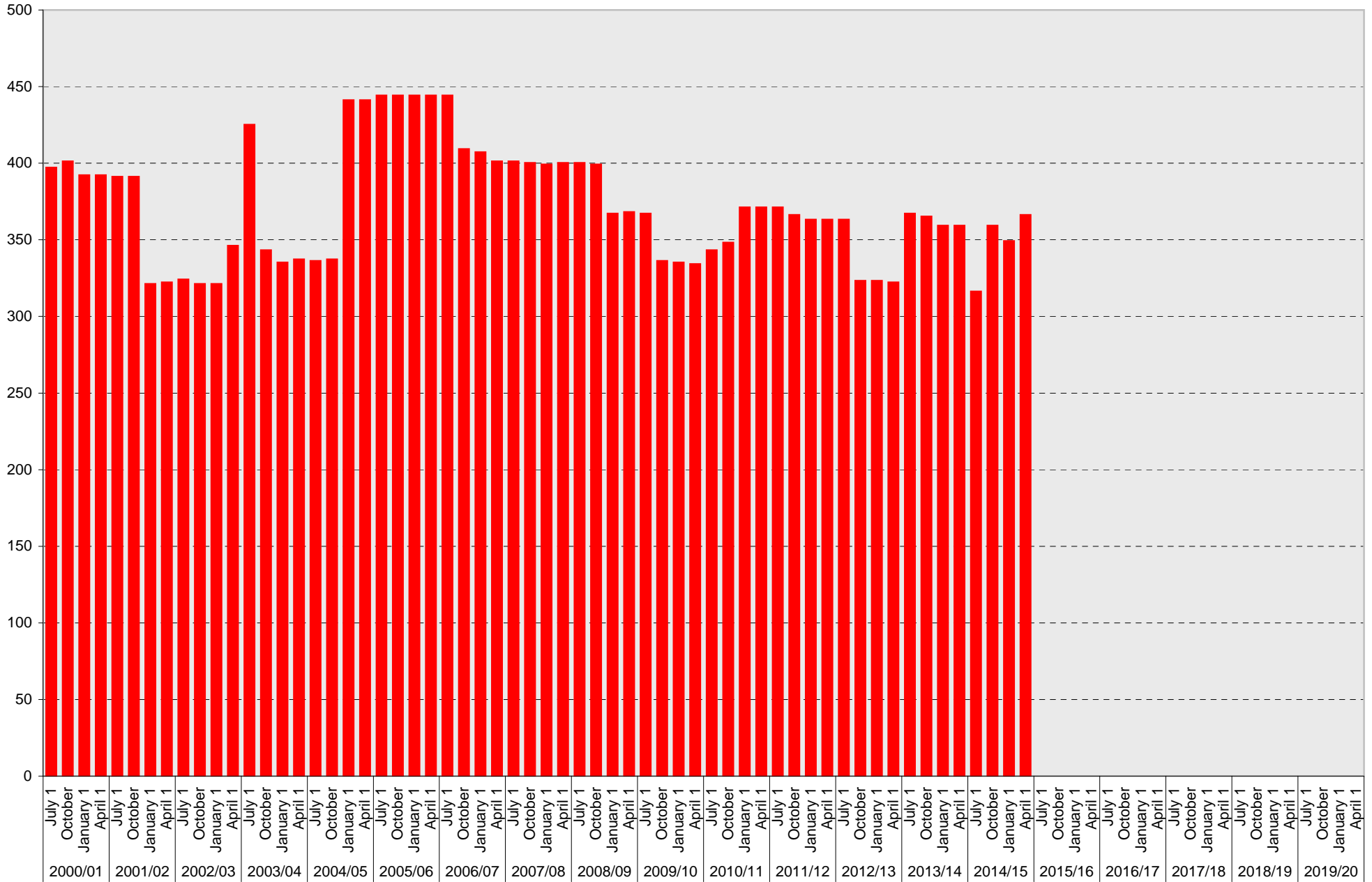


# University of California, San Diego Parking Space Inventory

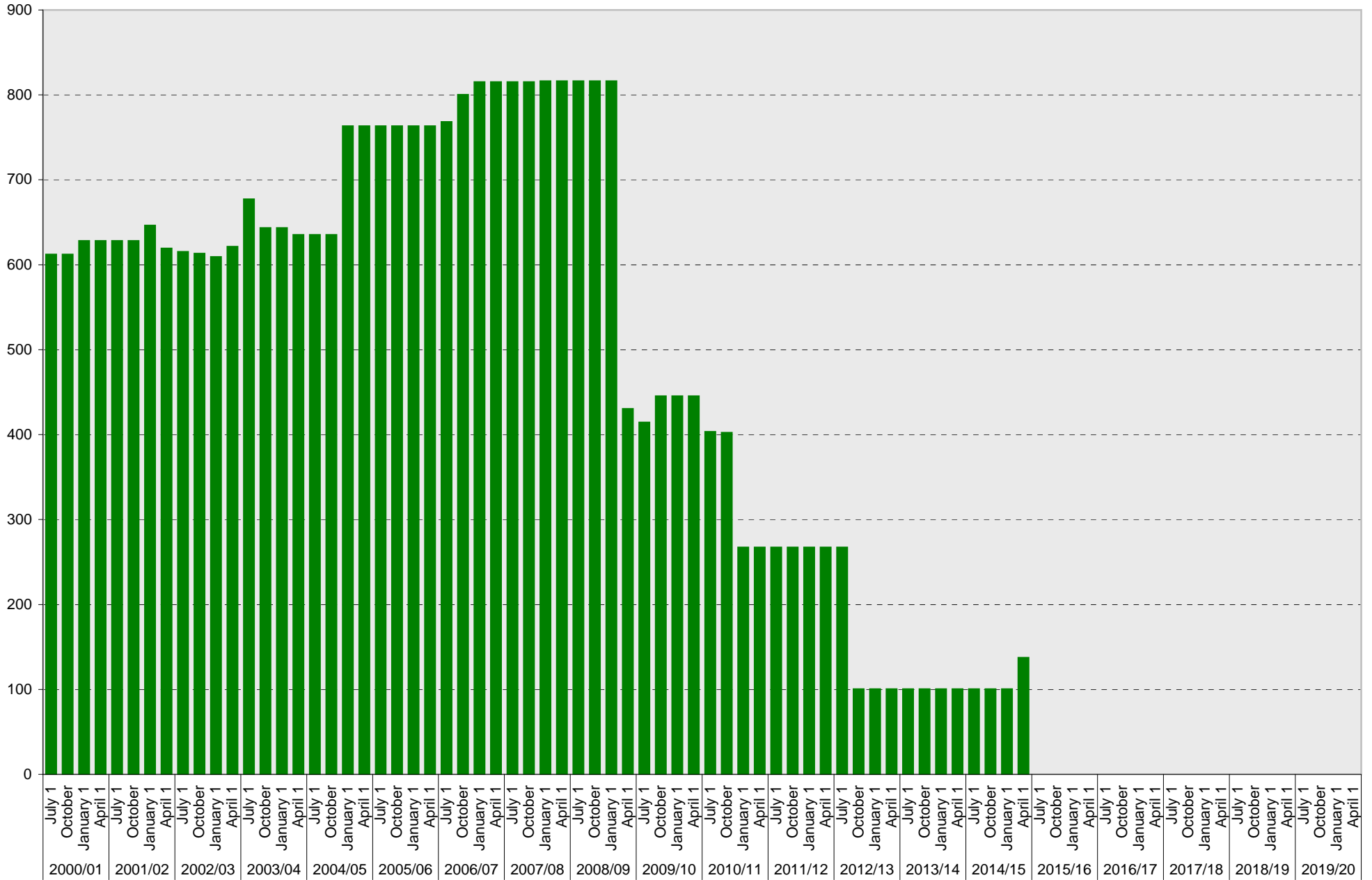
## School of Medicine: A Parking Spaces



■ A

# University of California, San Diego Parking Space Inventory

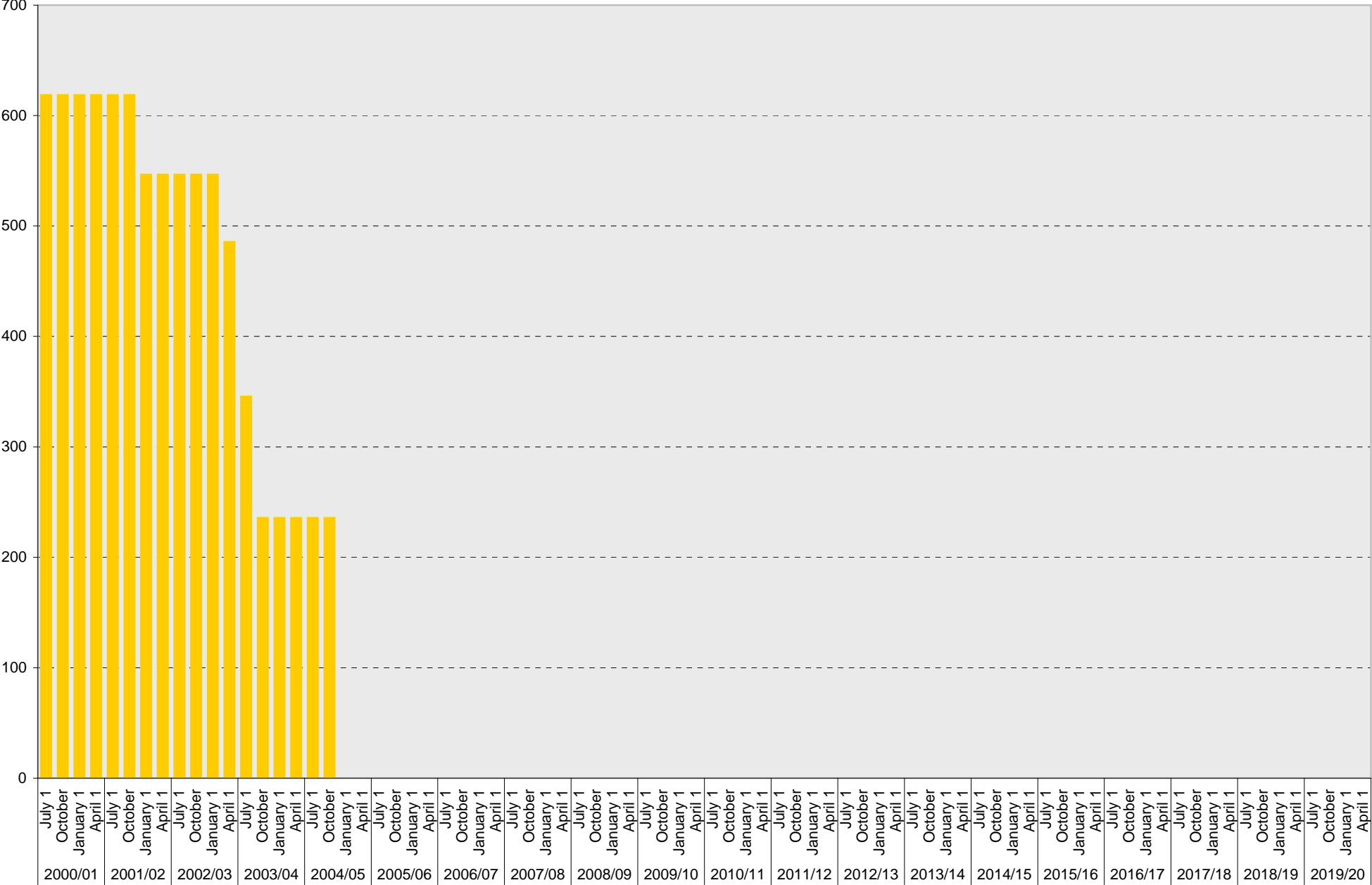
## School of Medicine: B Parking Spaces



■ B

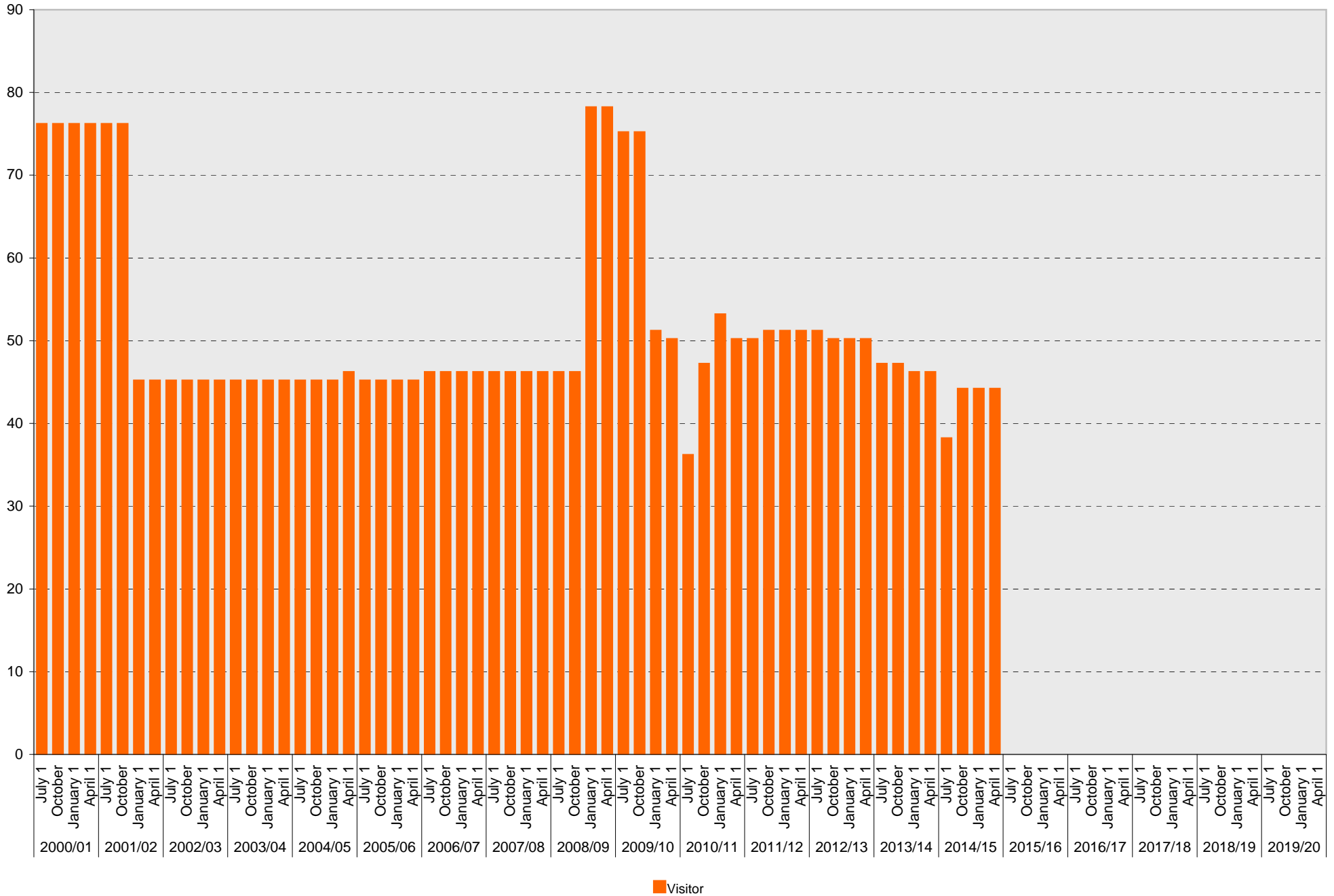
# University of California, San Diego Parking Space Inventory

## School of Medicine: S Parking Spaces



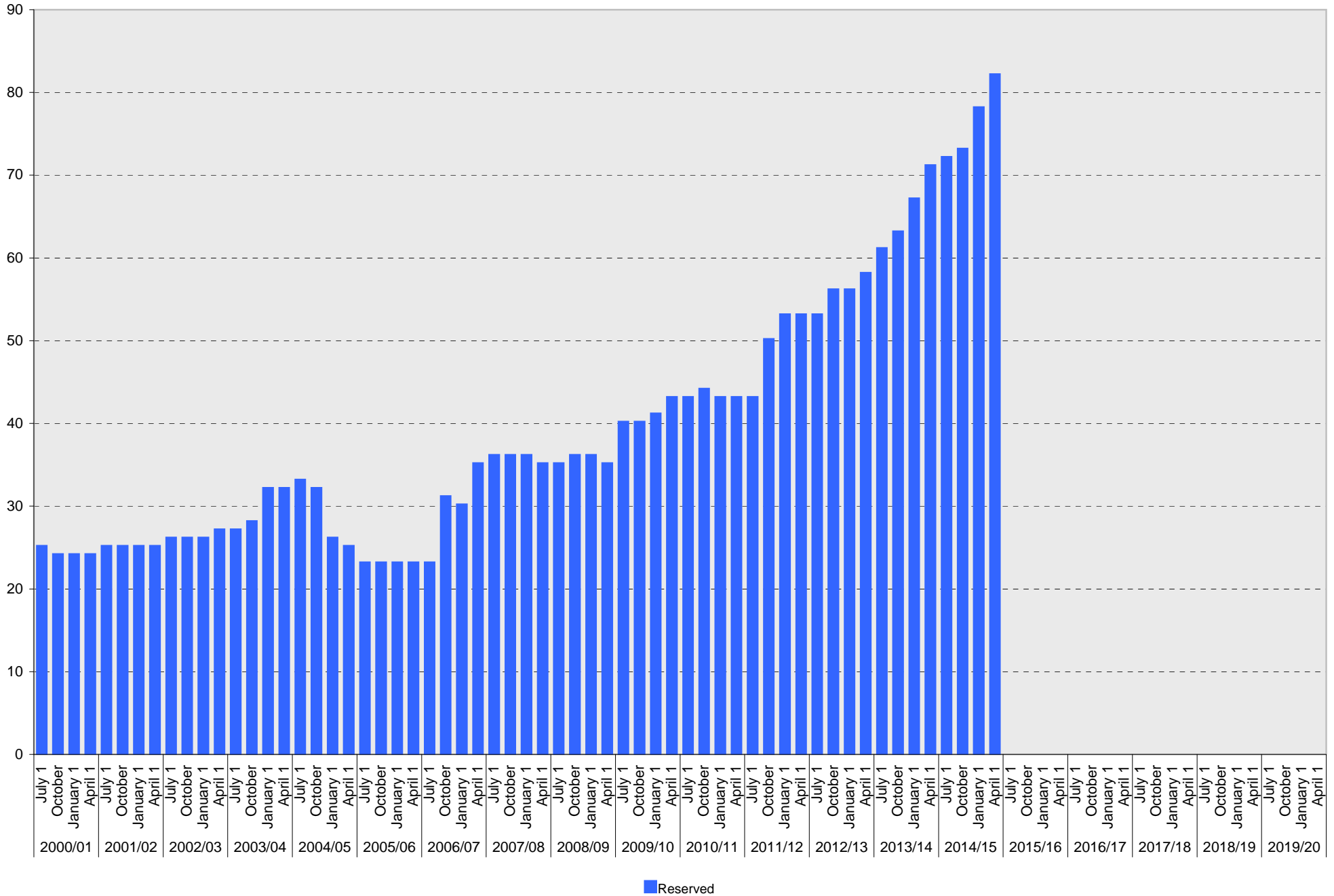
# University of California, San Diego Parking Space Inventory

## School of Medicine: Visitor Parking Spaces



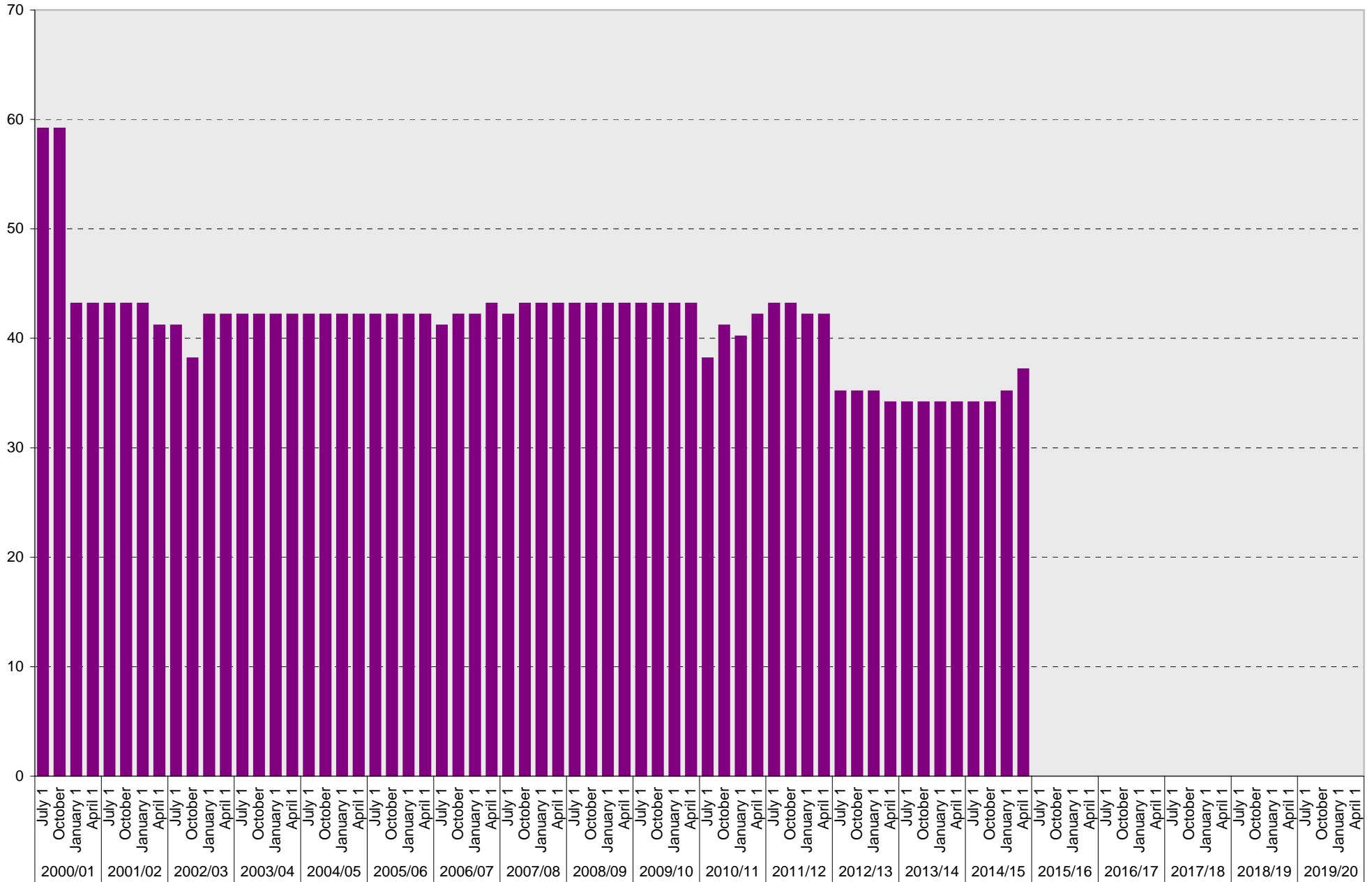
# University of California, San Diego Parking Space Inventory

## School of Medicine: Reserved Parking Spaces



# University of California, San Diego Parking Space Inventory

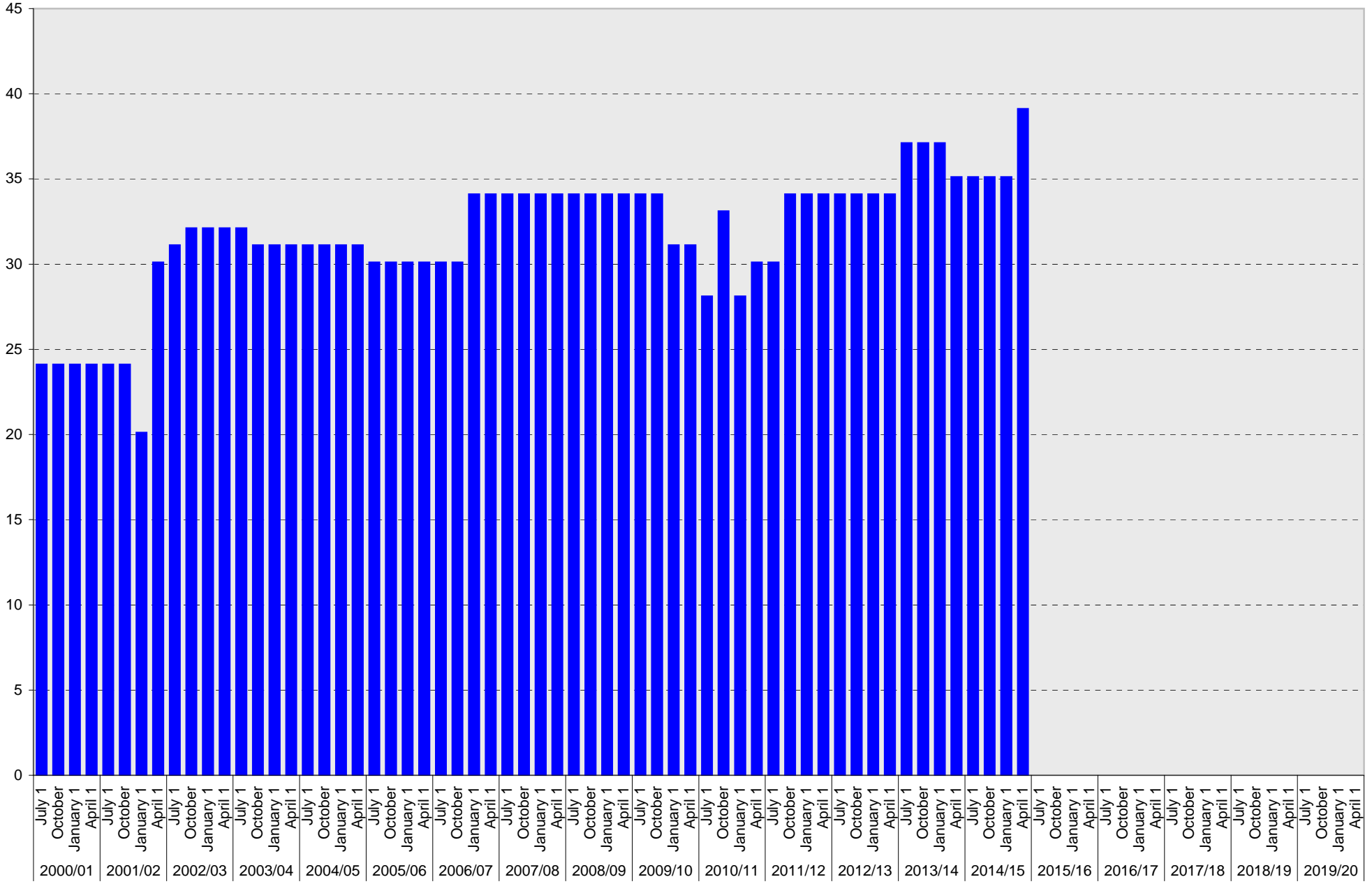
## School of Medicine: Allocated Parking Spaces



■ Allocated

# University of California, San Diego Parking Space Inventory

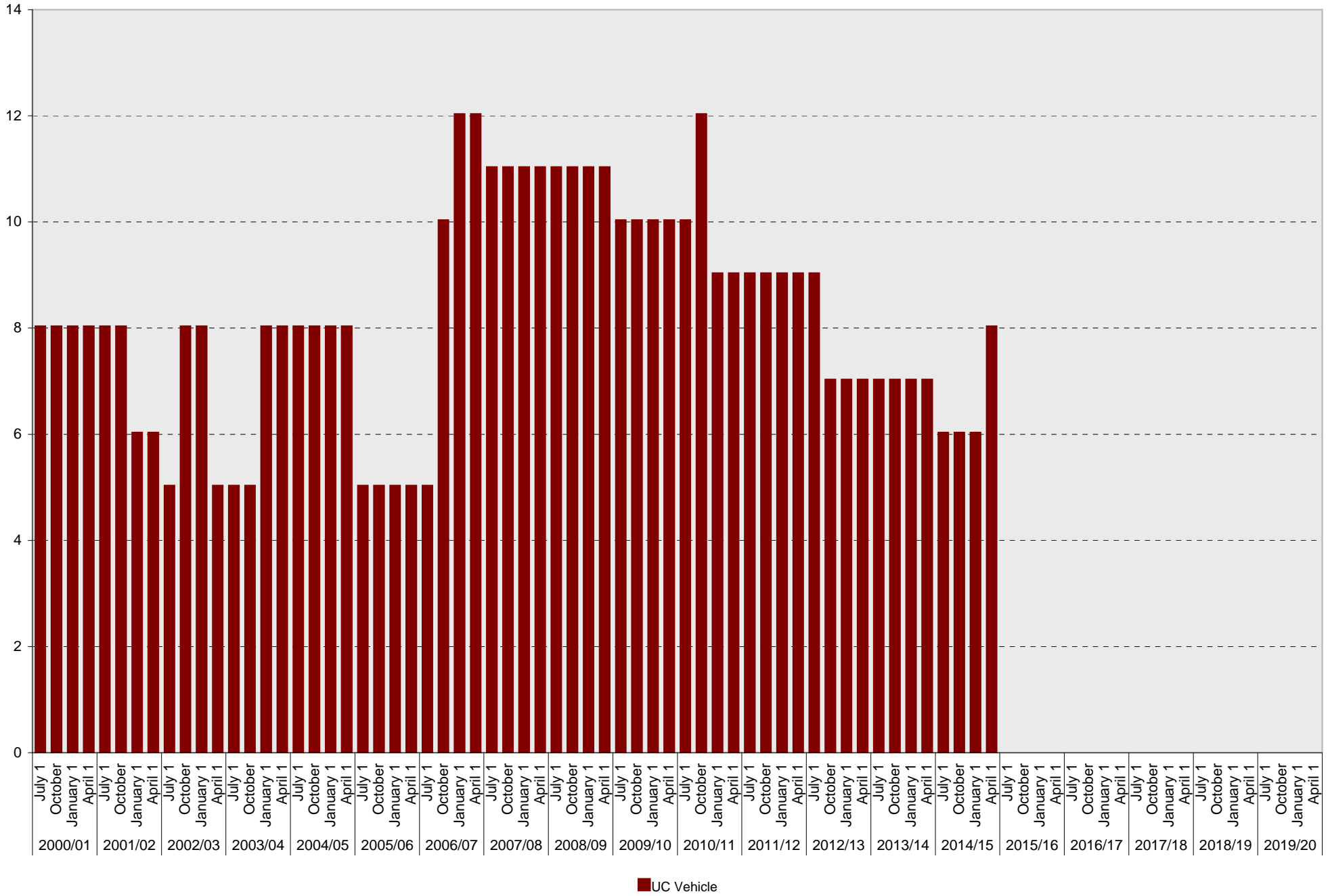
## School of Medicine: Accessible Parking Spaces



■ Accessible

# University of California, San Diego Parking Space Inventory

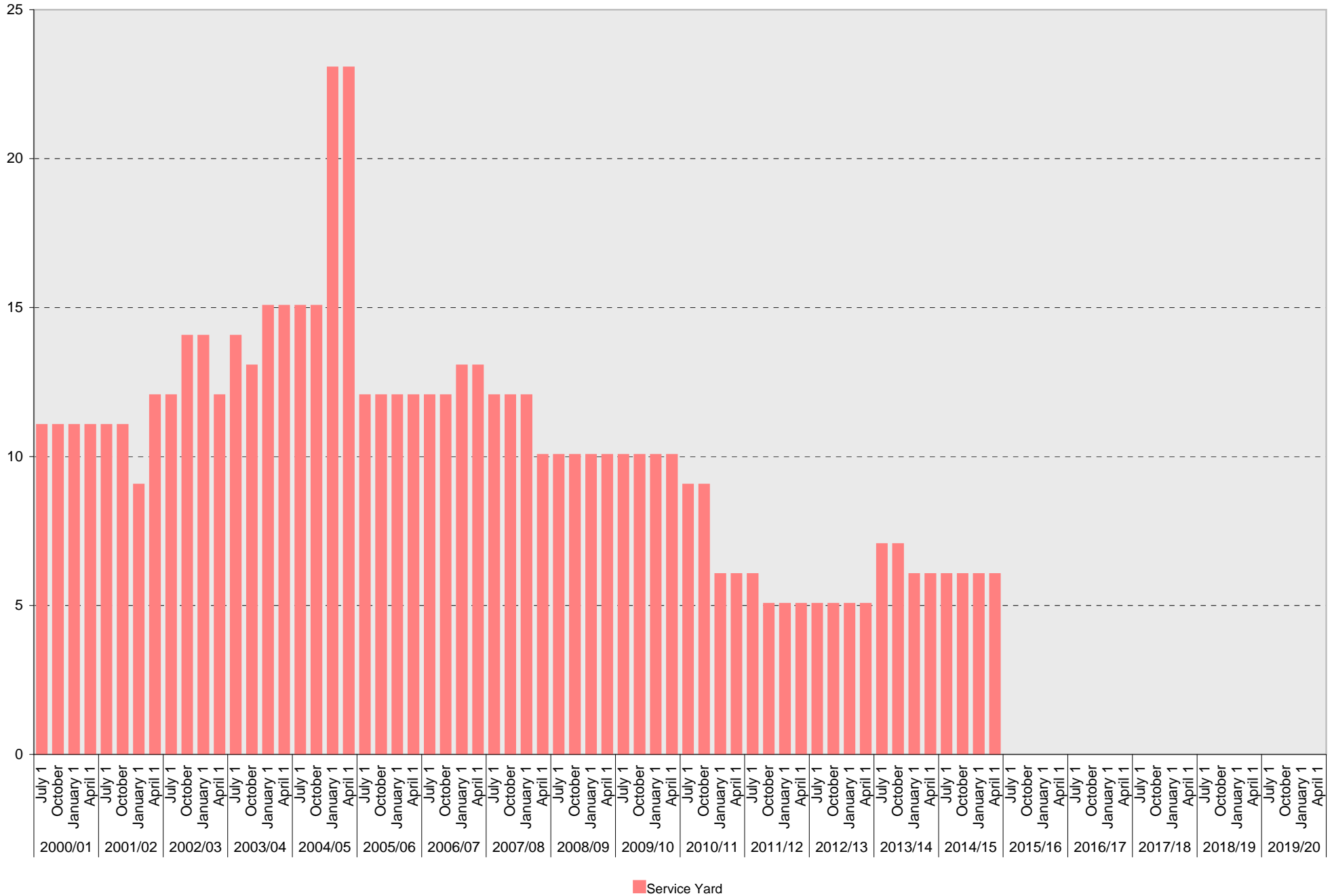
## School of Medicine: UC Vehicle Parking Spaces





# University of California, San Diego Parking Space Inventory

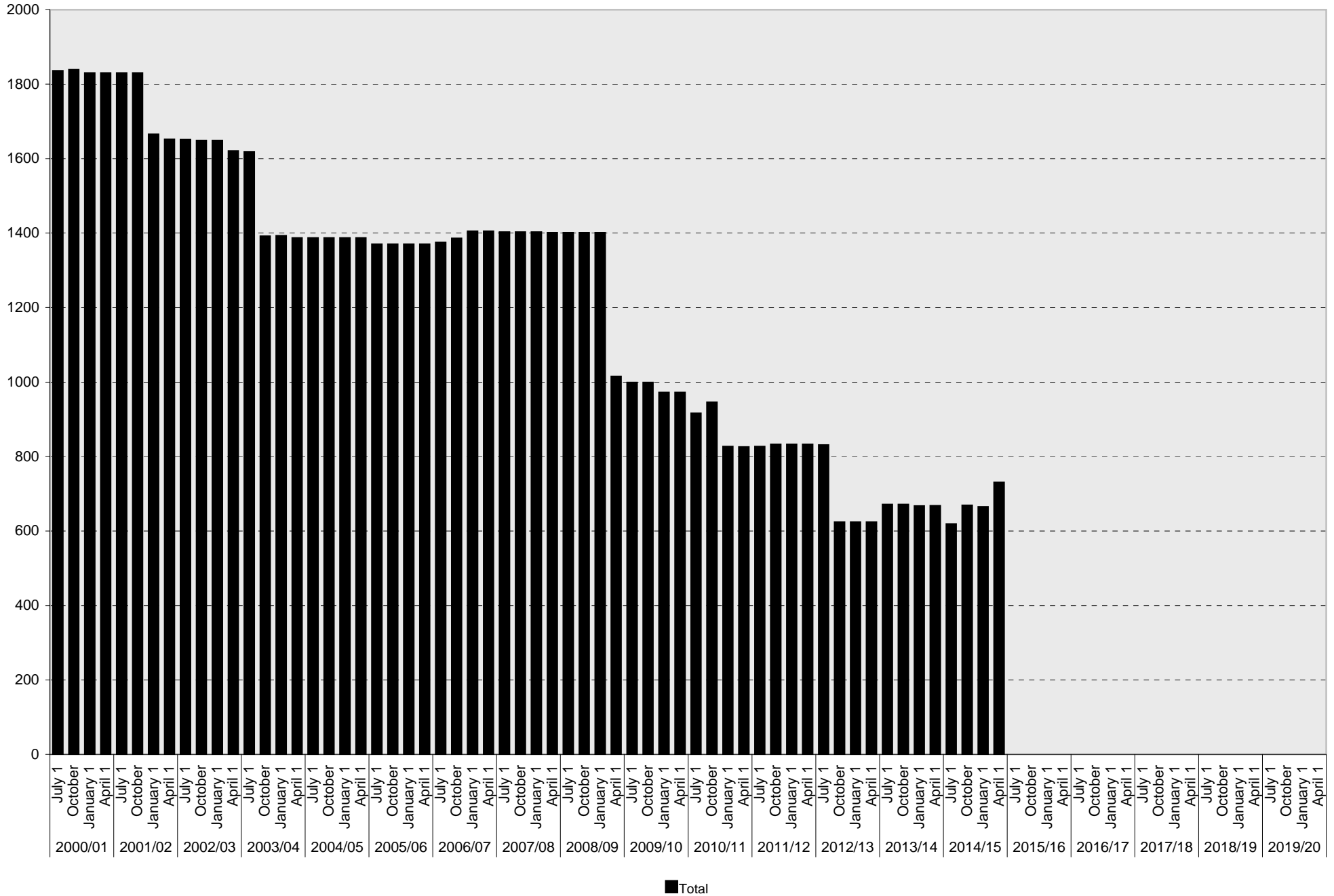
## School of Medicine: Service Yard Parking Spaces





# University of California, San Diego Parking Space Inventory

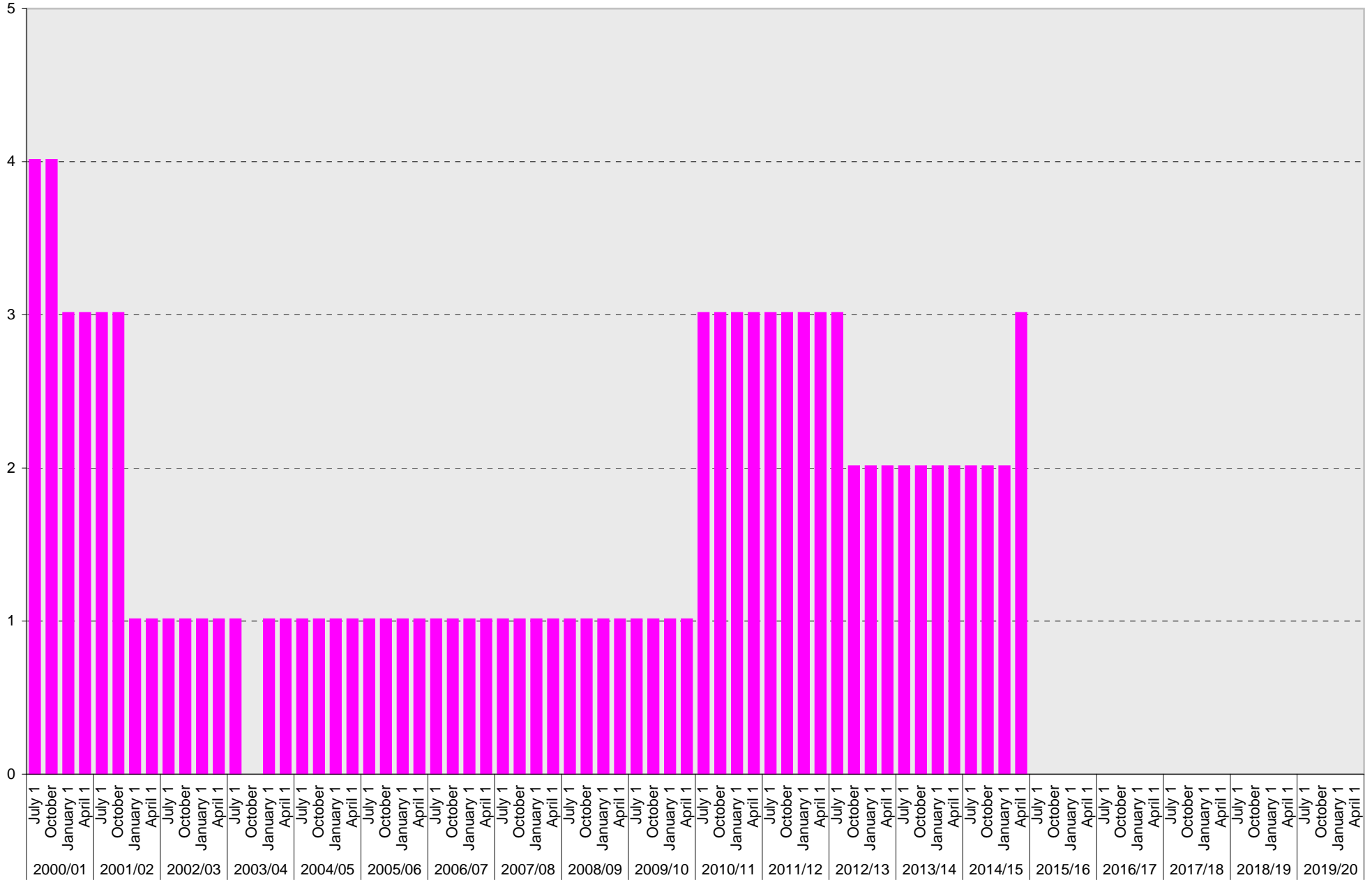
## School of Medicine: Total Parking Spaces



■ Total

# University of California, San Diego Parking Space Inventory

## School of Medicine: Motorcycle Parking Sections



■ Motorcycle

University of California, San Diego Parking Space Inventory  
School of Medicine

Date		Parking Spaces										Motorcycle Parking Sections	
		A	B	S	Visitor	Reserved	Allocated	Accessible	UC Vehicle	Service Yard	Loading		Total
2000/01	July 1	396	610	617	76	25	59	24	8	11	5	1831	4
	October 1	400	610	617	76	24	59	24	8	11	5	1834	4
	January 1	391	626	617	76	24	43	24	8	11	5	1825	3
	April 1	391	626	617	76	24	43	24	8	11	5	1825	3
2001/02	July 1	390	626	617	76	25	43	24	8	11	5	1825	3
	October 1	390	626	617	76	25	43	24	8	11	5	1825	3
	January 1	320	644	545	45	25	43	20	6	9	4	1661	1
	April 1	321	617	545	45	25	41	30	6	12	5	1647	1
2002/03	July 1	323	613	545	45	26	41	31	5	12	5	1646	1
	October 1	320	611	545	45	26	38	32	8	14	5	1644	1
	January 1	320	607	545	45	26	42	32	8	14	5	1644	1
	April 1	345	619	484	45	27	42	32	5	12	5	1616	1
2003/04	July 1	424	675	344	45	27	42	32	5	14	5	1613	1
	October 1	342	641	234	45	28	42	31	5	13	6	1387	
	January 1	334	641	234	45	32	42	31	8	15	6	1388	1
	April 1	336	633	234	45	32	42	31	8	15	6	1382	1
2004/05	July 1	335	633	234	45	33	42	31	8	15	6	1382	1
	October 1	336	633	234	45	32	42	31	8	15	6	1382	1
	January 1	440	761		45	26	42	31	8	23	6	1382	1
	April 1	440	761		46	25	42	31	8	23	6	1382	1
2005/06	July 1	443	761		45	23	42	30	5	12	4	1365	1
	October 1	443	761		45	23	42	30	5	12	4	1365	1
	January 1	443	761		45	23	42	30	5	12	4	1365	1
	April 1	443	761		45	23	42	30	5	12	4	1365	1
2006/07	July 1	443	766		46	23	41	30	5	12	4	1370	1
	October 1	408	798		46	31	42	30	10	12	4	1381	1
	January 1	406	813		46	30	42	34	12	13	4	1400	1
	April 1	400	813		46	35	43	34	12	13	4	1400	1
2007/08	July 1	400	813		46	36	42	34	11	12	4	1398	1
	October 1	399	813		46	36	43	34	11	12	4	1398	1
	January 1	398	814		46	36	43	34	11	12	4	1398	1
	April 1	399	814		46	35	43	34	11	10	4	1396	1
2008/09	July 1	399	814		46	35	43	34	11	10	4	1396	1
	October 1	398	814		46	36	43	34	11	10	4	1396	1
	January 1	366	814		78	36	43	34	11	10	4	1396	1
	April 1	367	428		78	35	43	34	11	10	4	1010	1
2009/10	July 1	366	412		75	40	43	34	10	10	4	994	1
	October 1	335	443		75	40	43	34	10	10	4	994	1
	January 1	334	443		51	41	43	31	10	10	4	967	1
	April 1	333	443		50	43	43	31	10	10	4	967	1

