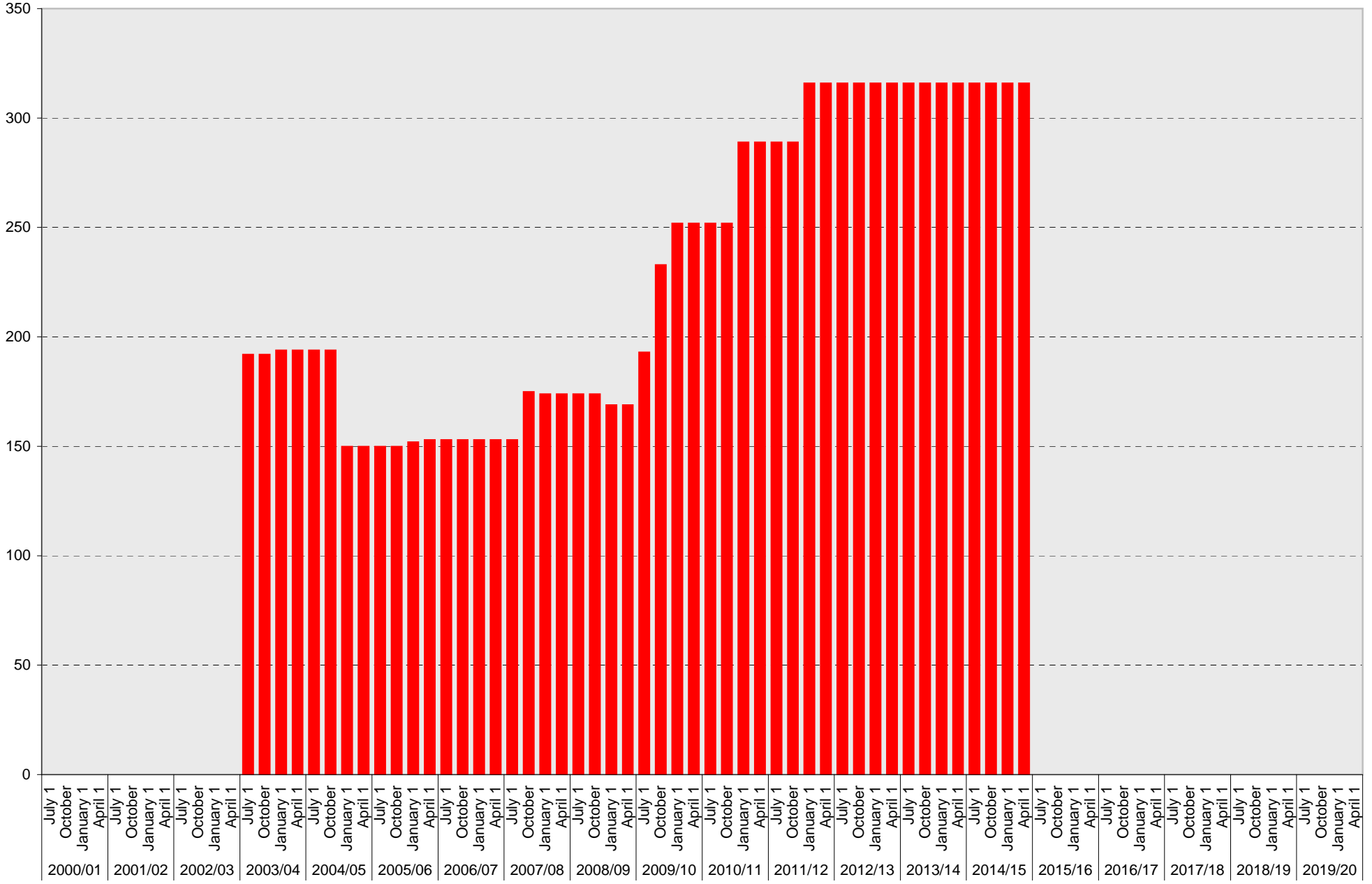


University of California, San Diego Parking Space Inventory

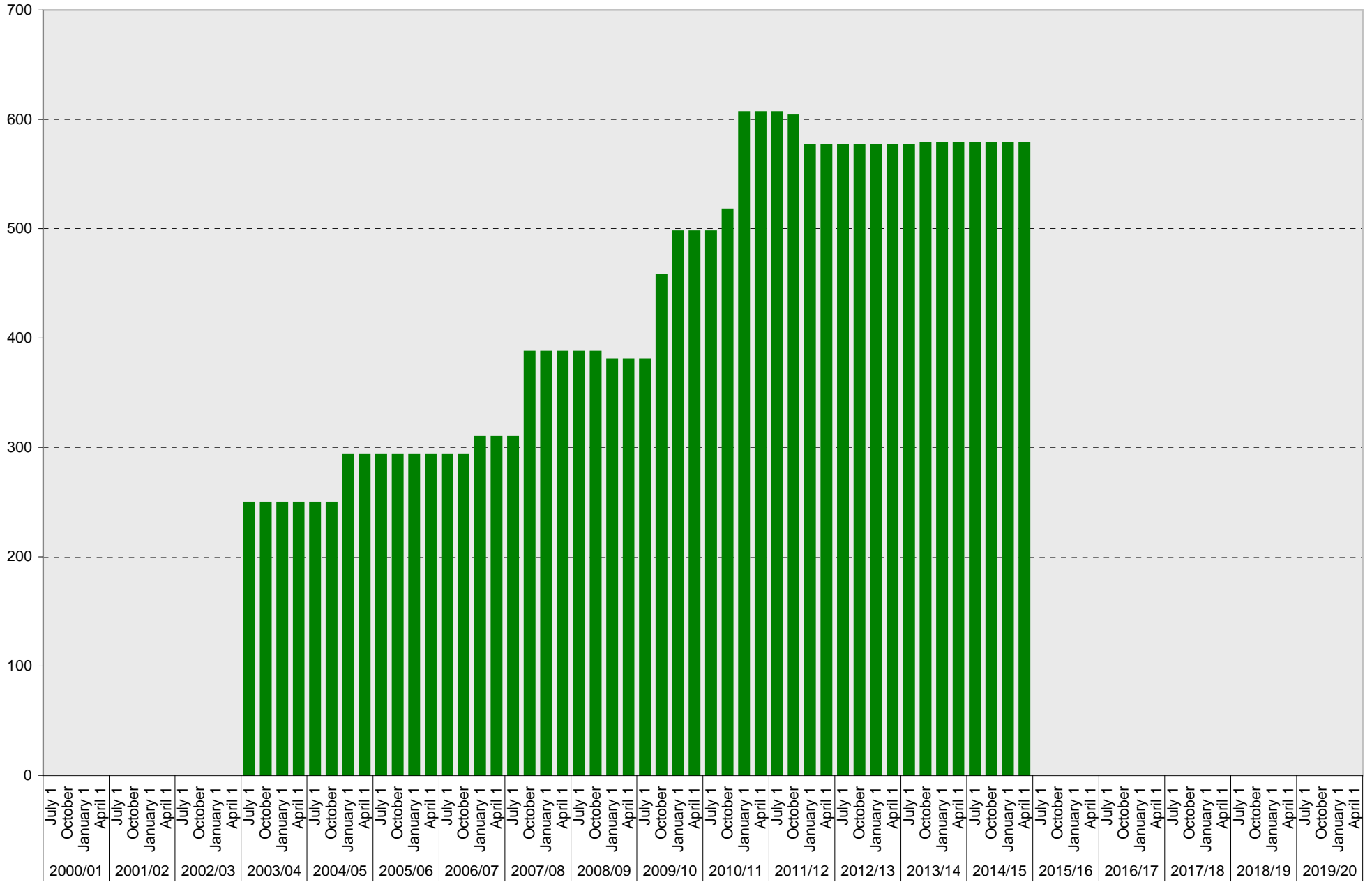
Sixth College: A Parking Spaces



■ A

University of California, San Diego Parking Space Inventory

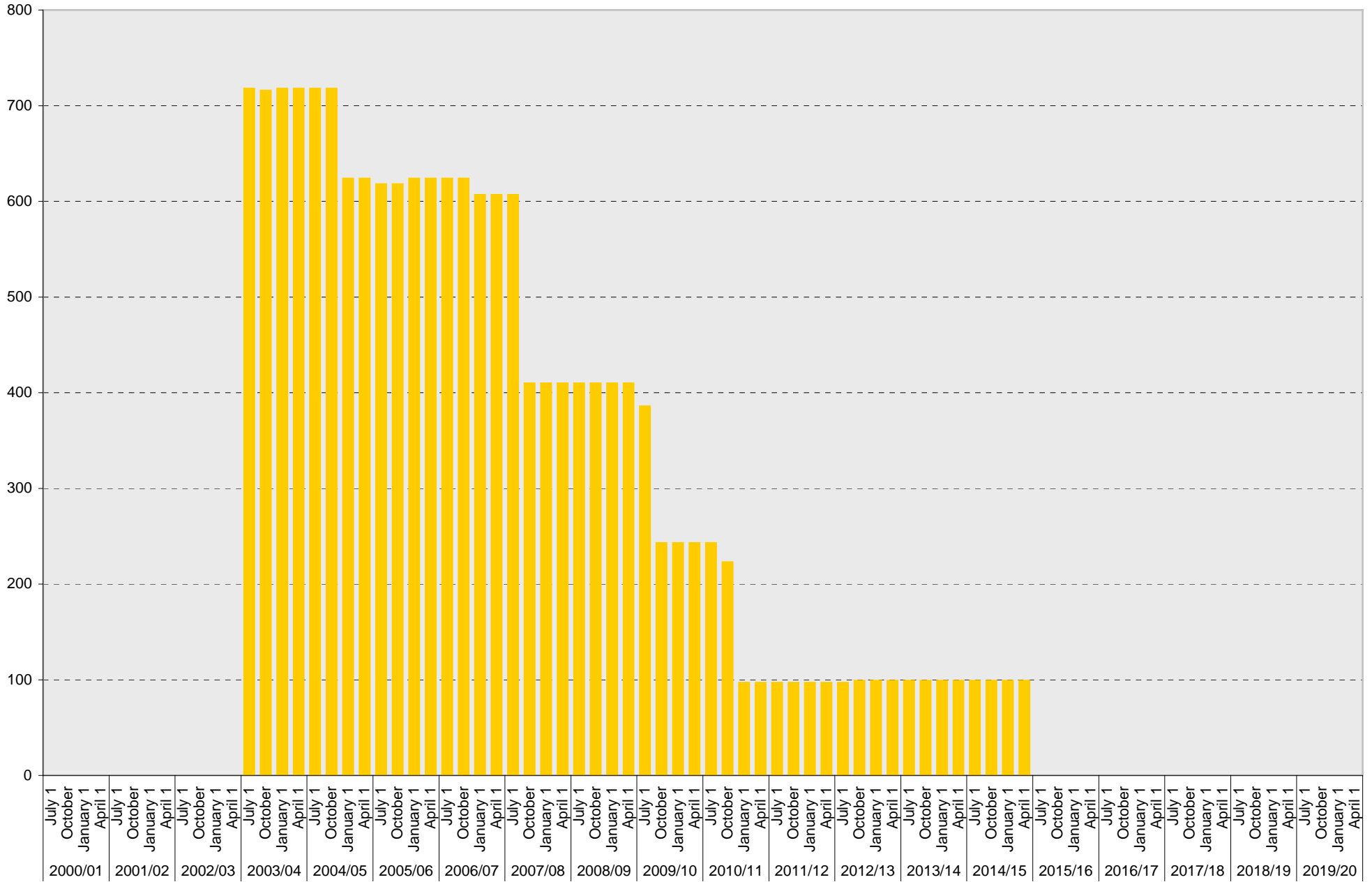
Sixth College: B Parking Spaces



■ B

University of California, San Diego Parking Space Inventory

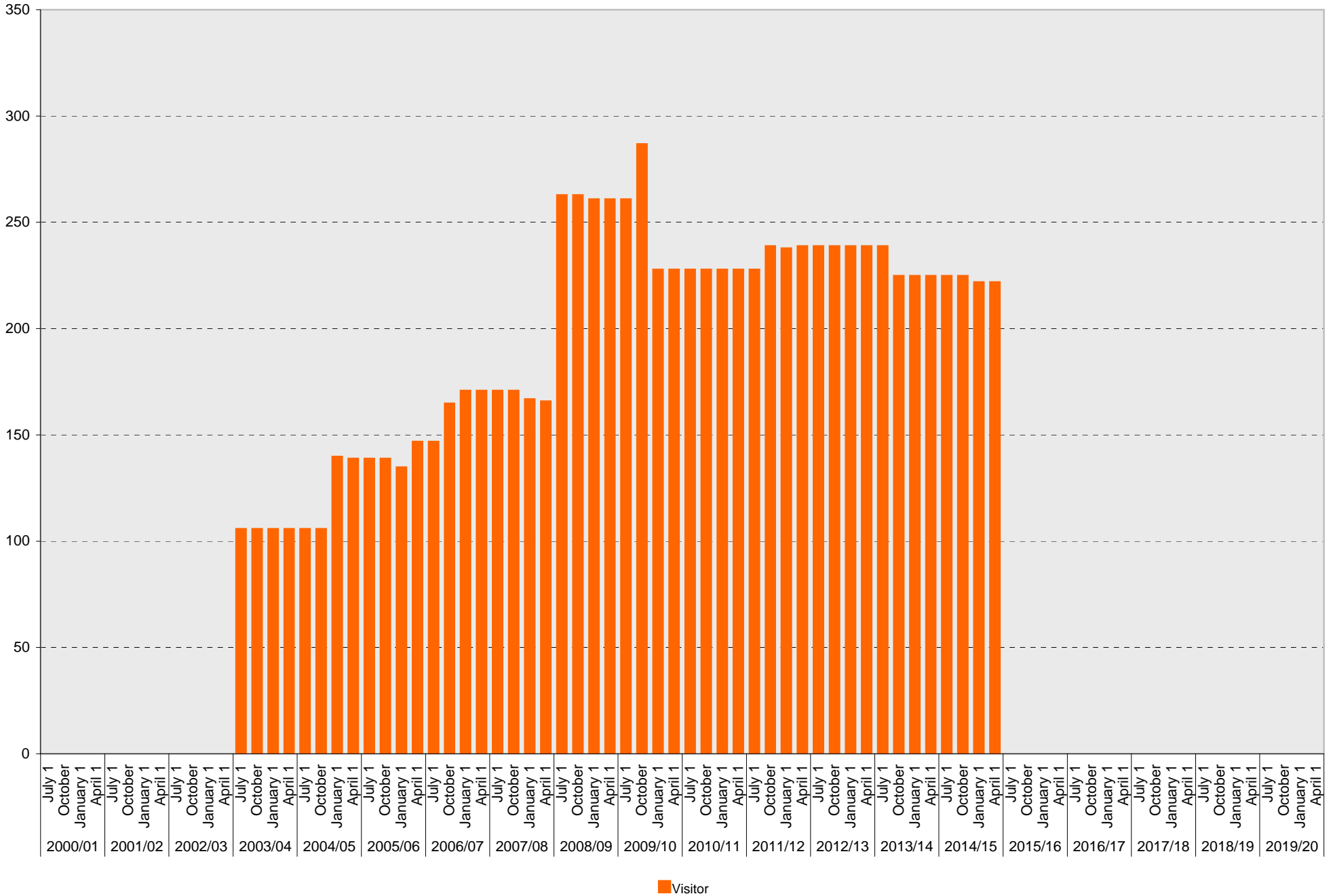
Sixth College: S Parking Spaces



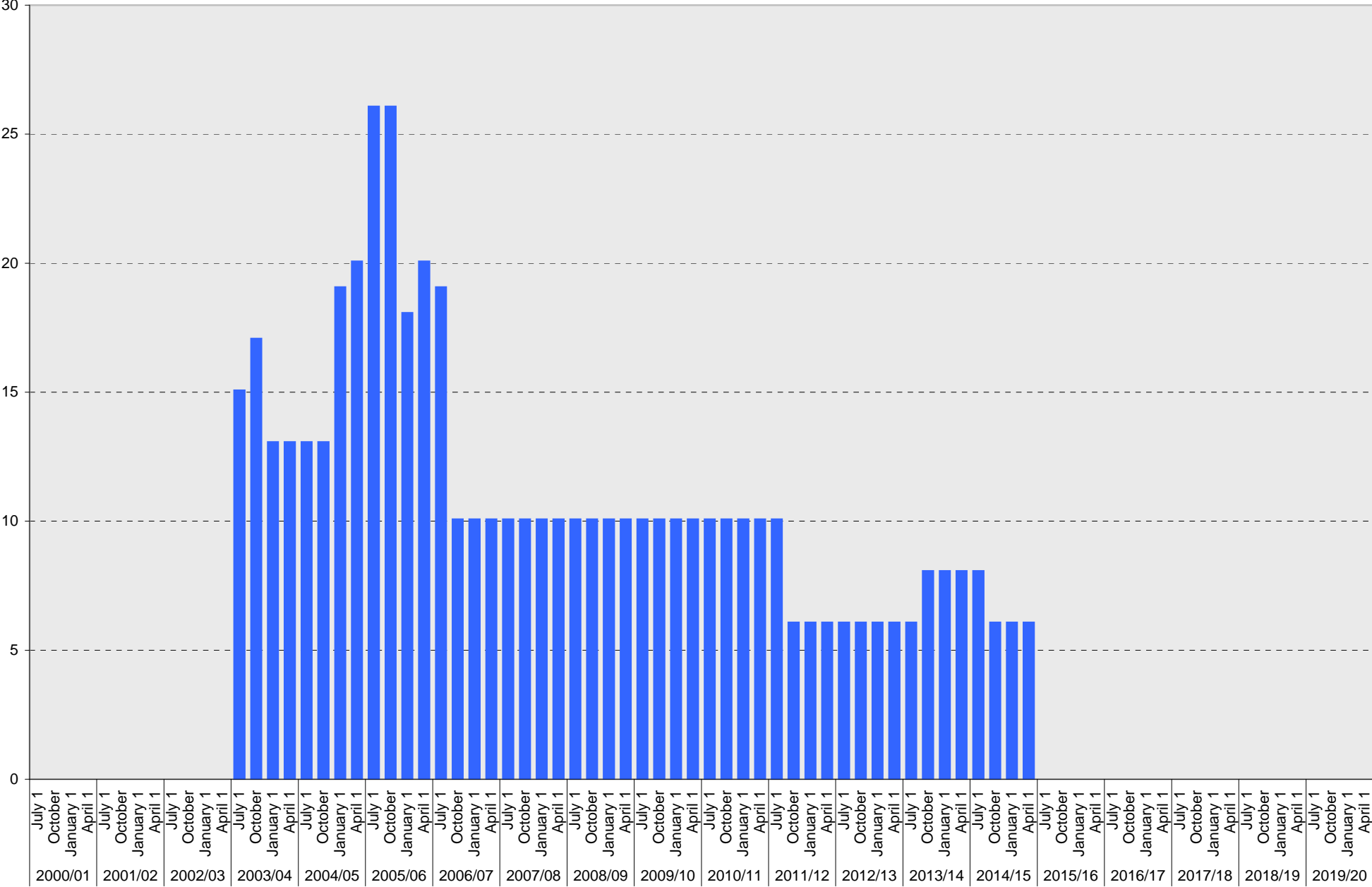
■ S

University of California, San Diego Parking Space Inventory

Sixth College: Visitor Parking Spaces



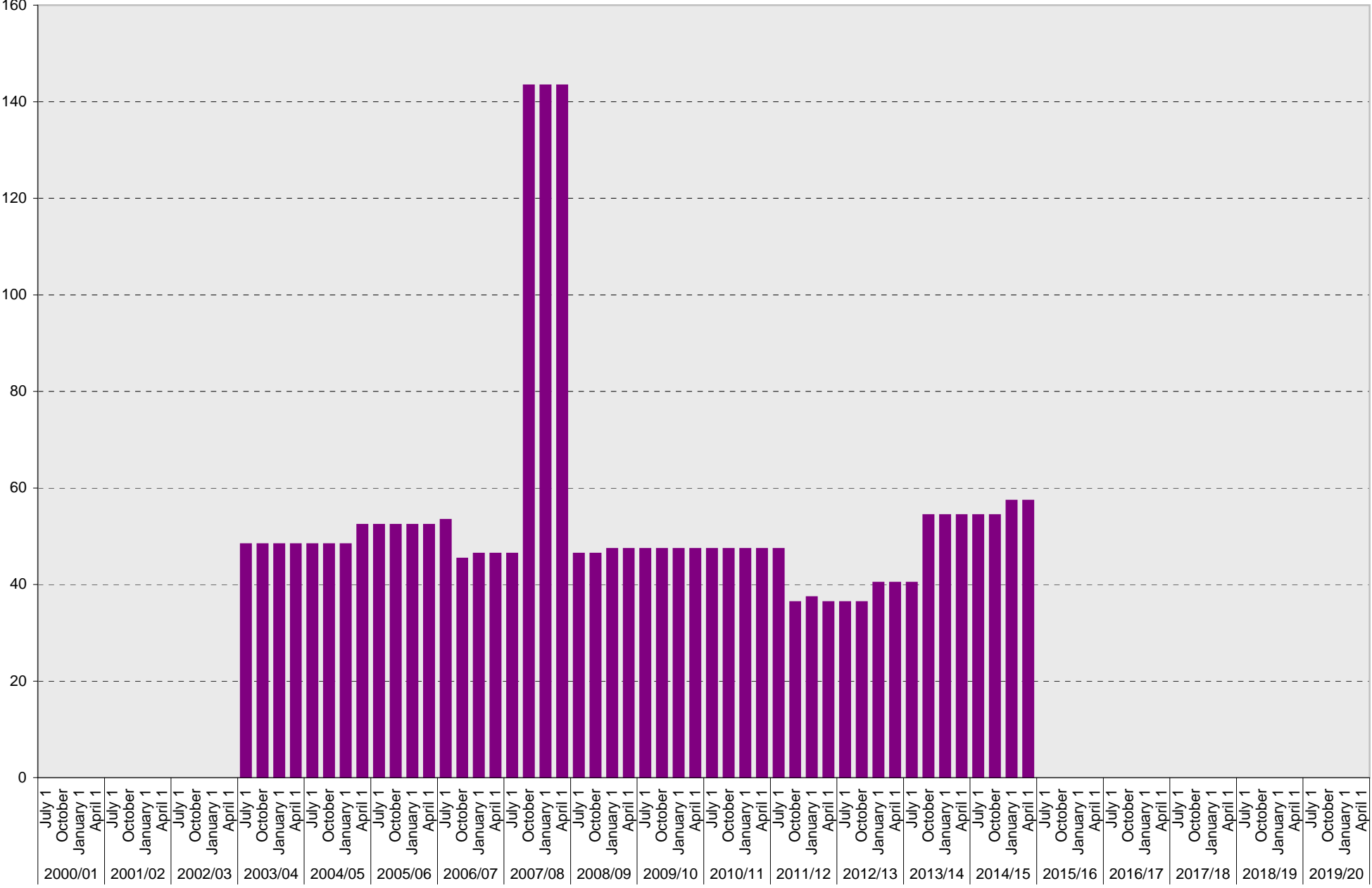
University of California, San Diego Parking Space Inventory
Sixth College: Reserved Parking Spaces



Reserved

University of California, San Diego Parking Space Inventory

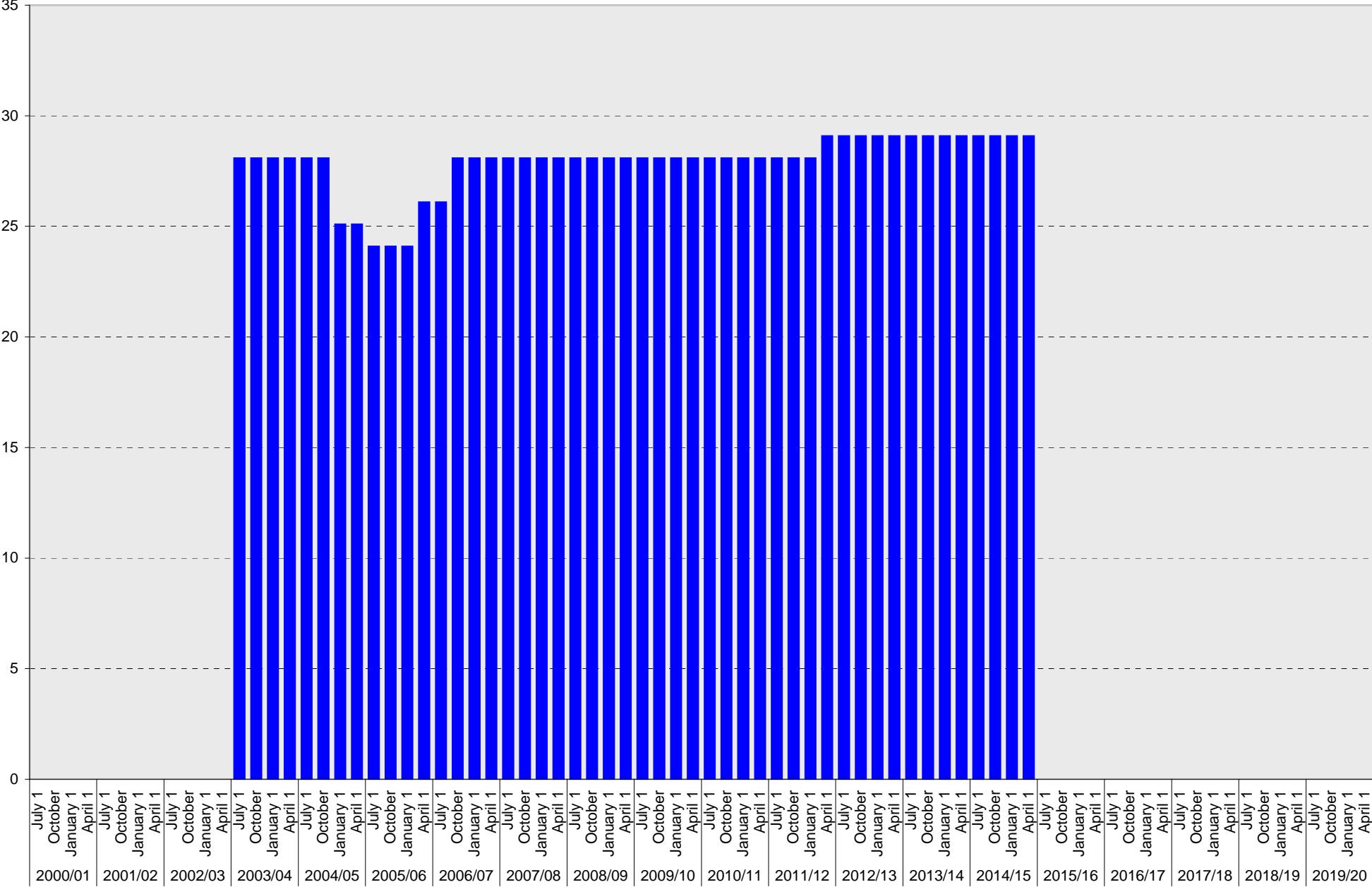
Sixth College: Allocated Parking Spaces



■ Allocated

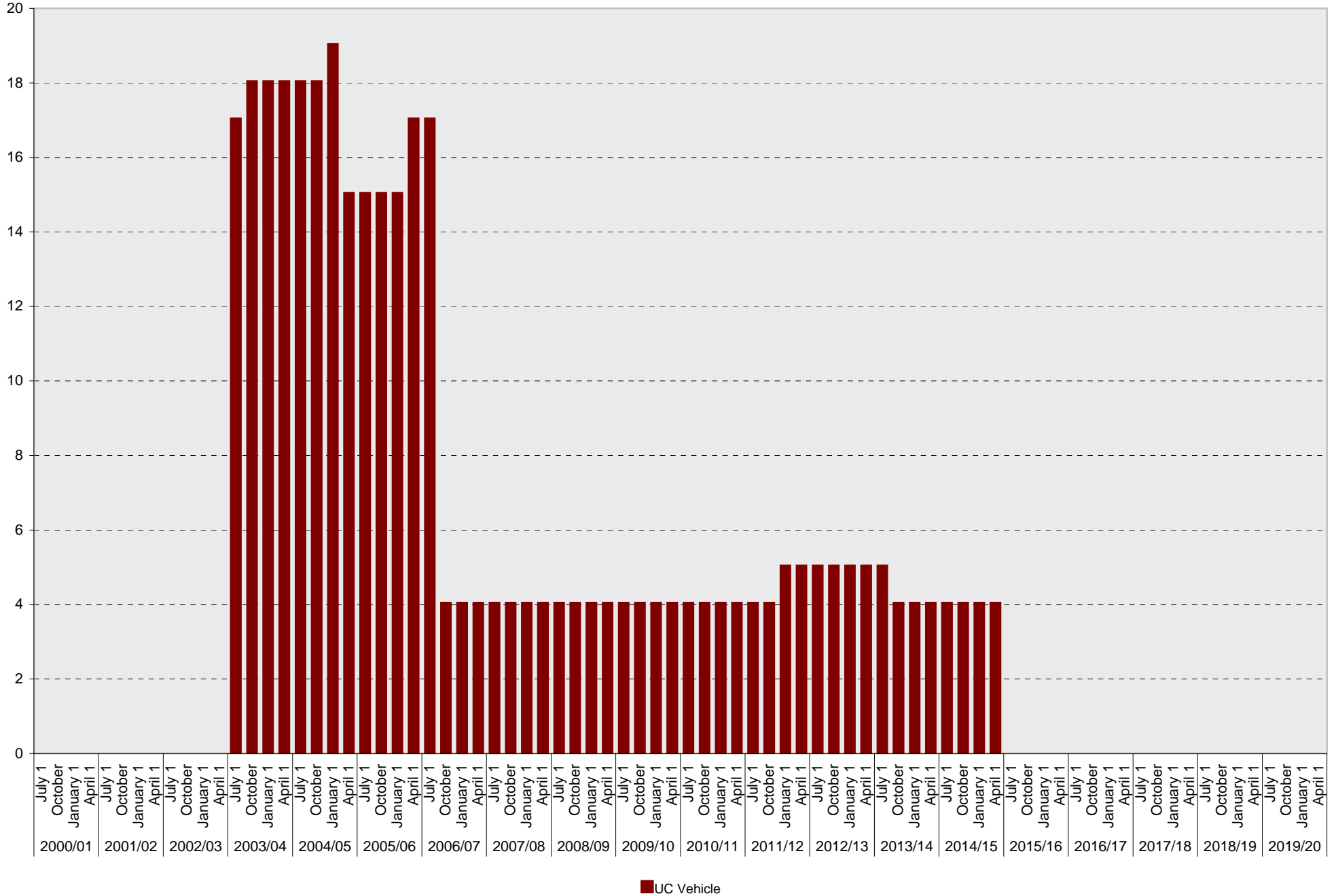
University of California, San Diego Parking Space Inventory

Sixth College: Accessible Parking Spaces



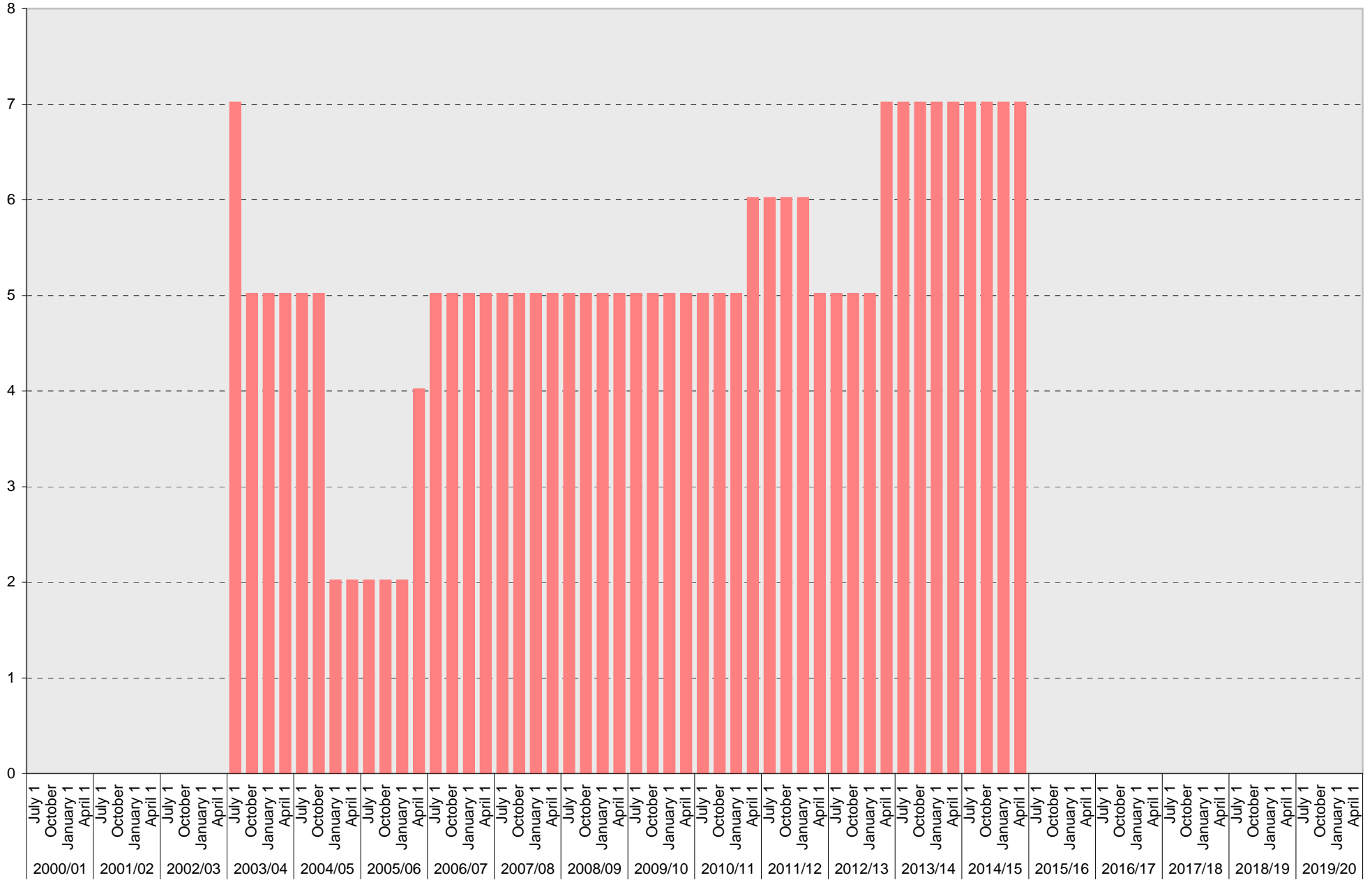
■ Accessible

University of California, San Diego Parking Space Inventory Sixth College: UC Vehicle Parking Spaces



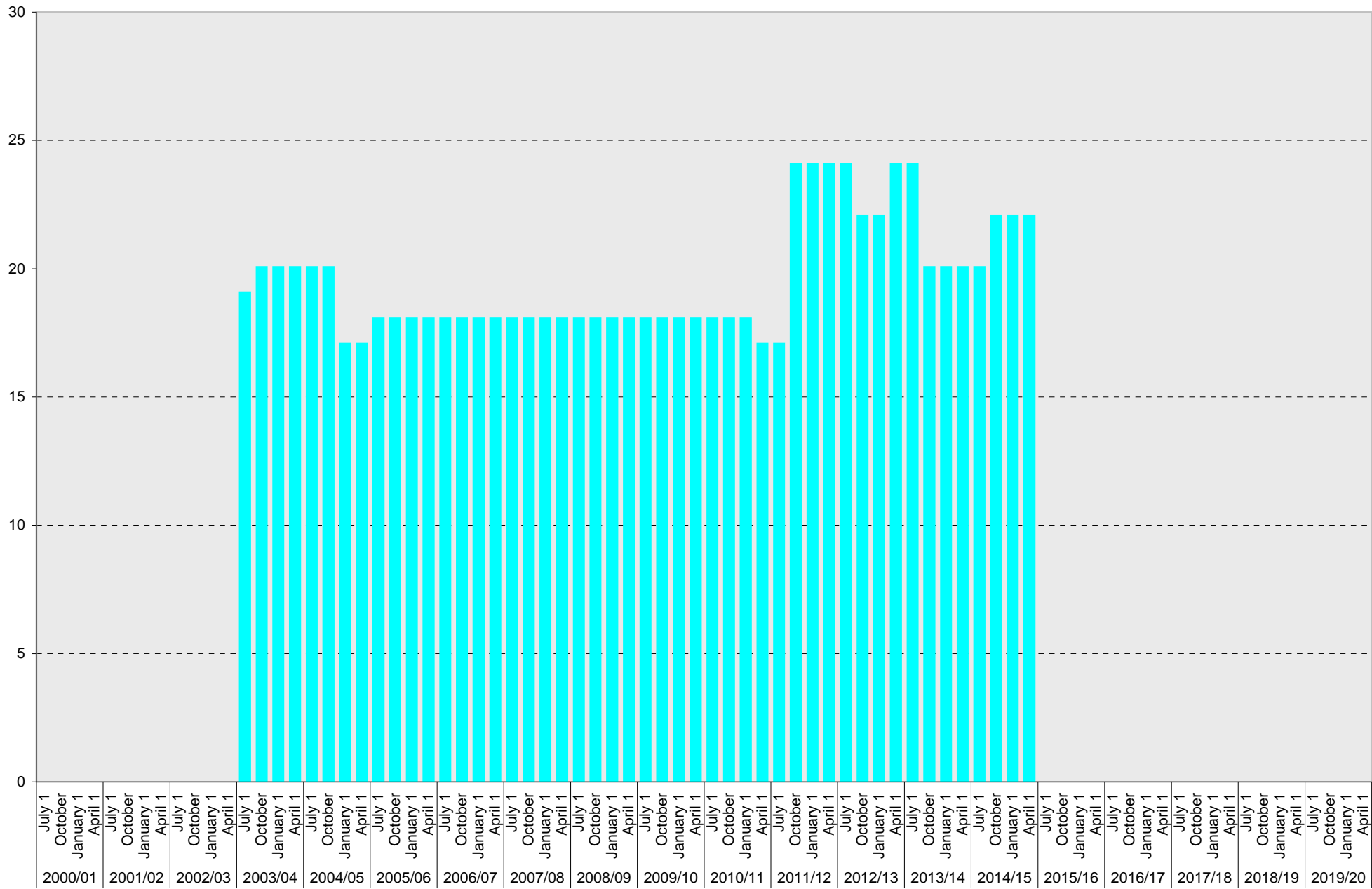
University of California, San Diego Parking Space Inventory

Sixth College: Service Yard Parking Spaces



■ Service Yard

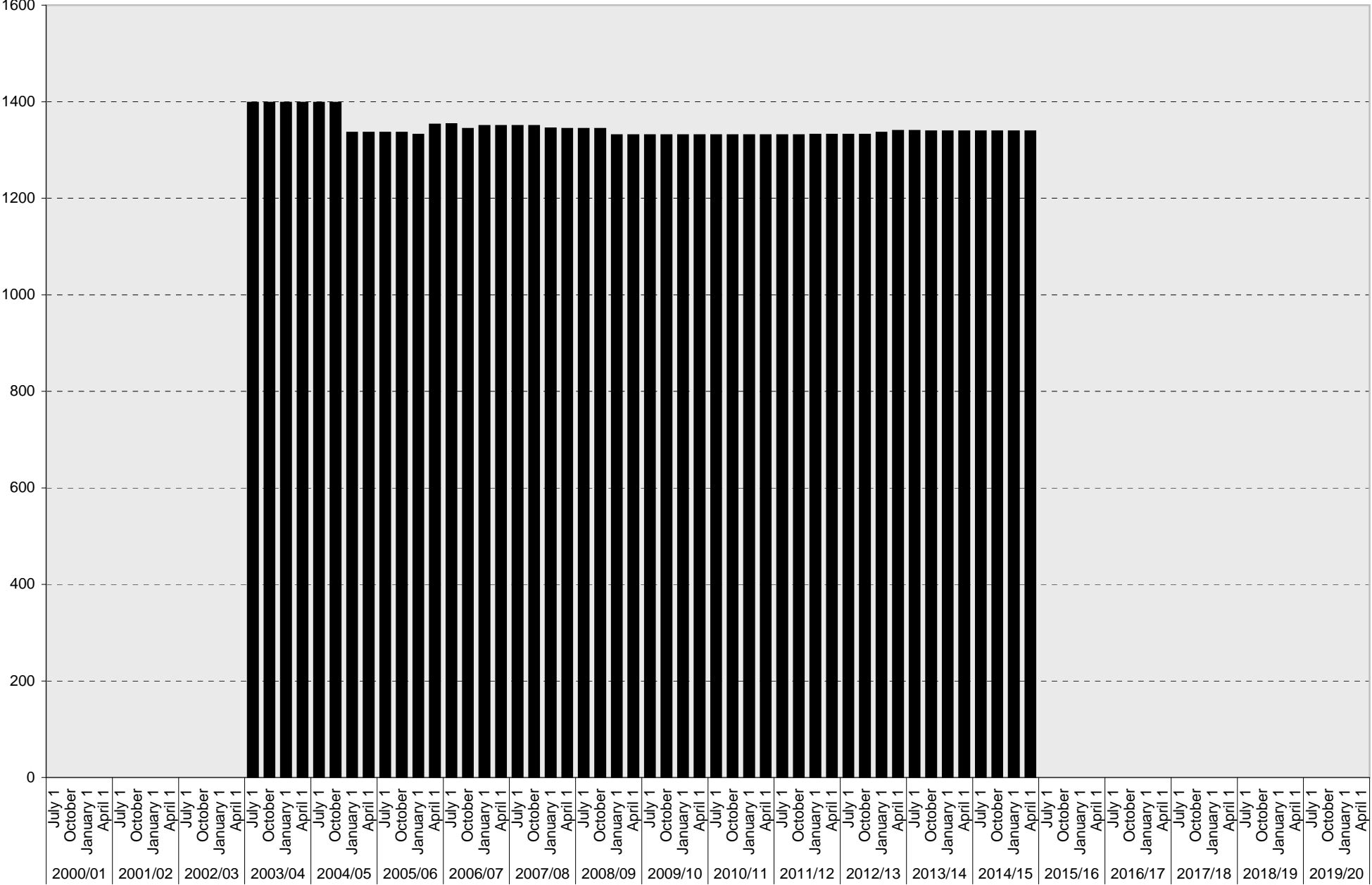
University of California, San Diego Parking Space Inventory Sixth College: Loading Parking Spaces



■ Loading

University of California, San Diego Parking Space Inventory

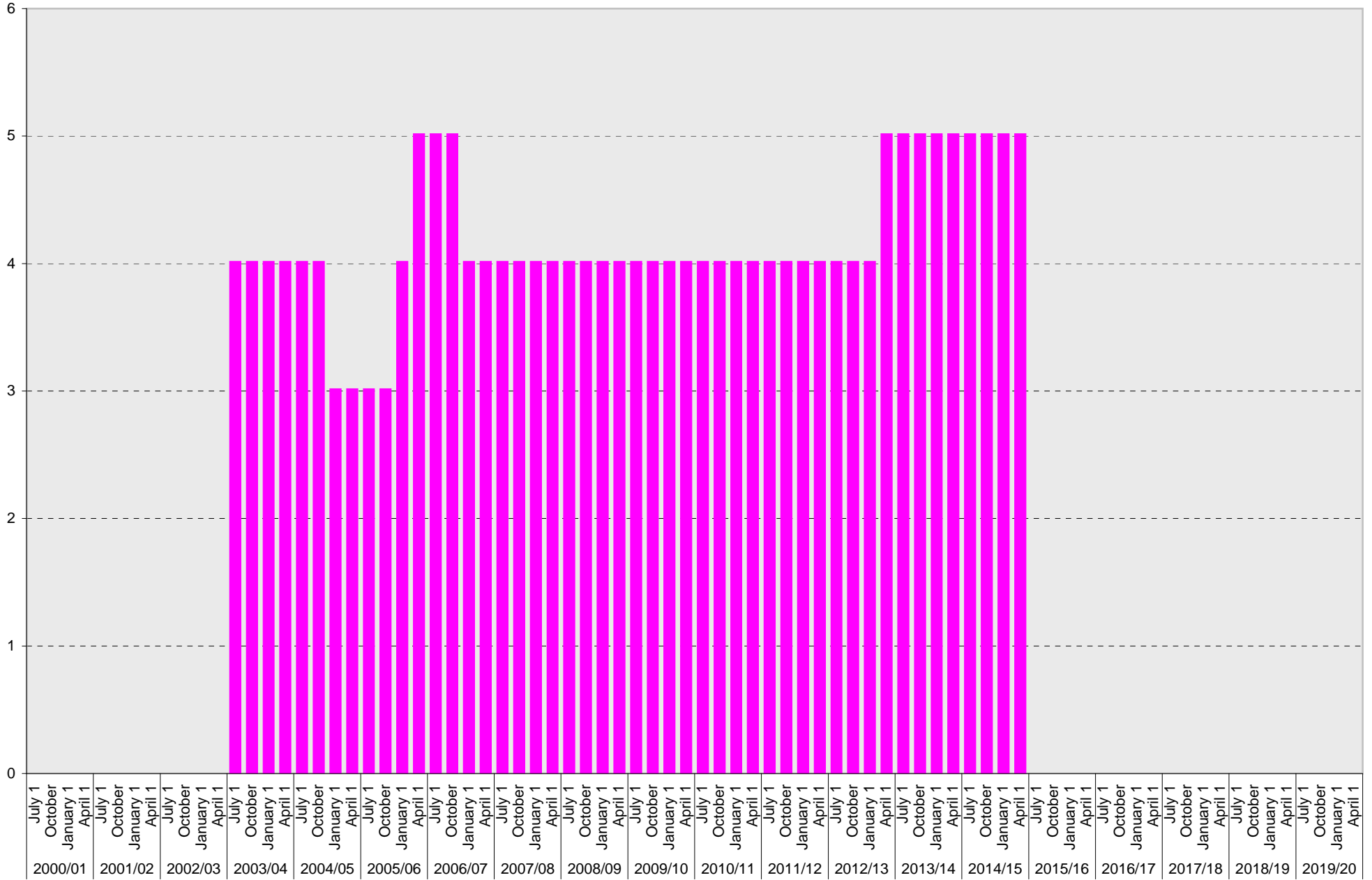
Sixth College: Total Parking Spaces



■ Total

University of California, San Diego Parking Space Inventory

Sixth College: Motorcycle Parking Sections



■ Motorcycle

University of California, San Diego Parking Space Inventory
Sixth College

Date		Parking Spaces											Motorcycle Parking Sections
		A	B	S	Visitor	Reserved	Allocated	Accessible	UC Vehicle	Service Yard	Loading	Total	
2000/01	July 1												
	October 1												
	January 1												
	April 1												
2001/02	July 1												
	October 1												
	January 1												
	April 1												
2002/03	July 1												
	October 1												
	January 1												
	April 1												
2003/04	July 1	191	248	716	105	15	48	28	17	7	19	1394	4
	October 1	191	248	714	105	17	48	28	18	5	20	1394	4
	January 1	193	248	716	105	13	48	28	18	5	20	1394	4
	April 1	193	248	716	105	13	48	28	18	5	20	1394	4
2004/05	July 1	193	248	716	105	13	48	28	18	5	20	1394	4
	October 1	193	248	716	105	13	48	28	18	5	20	1394	4
	January 1	149	292	622	139	19	48	25	19	2	17	1332	3
	April 1	149	292	622	138	20	52	25	15	2	17	1332	3
2005/06	July 1	149	292	616	138	26	52	24	15	2	18	1332	3
	October 1	149	292	616	138	26	52	24	15	2	18	1332	3
	January 1	151	292	622	134	18	52	24	15	2	18	1328	4
	April 1	152	292	622	146	20	52	26	17	4	18	1349	5
2006/07	July 1	152	292	622	146	19	53	26	17	5	18	1350	5
	October 1	152	292	622	164	10	45	28	4	5	18	1340	5
	January 1	152	308	605	170	10	46	28	4	5	18	1346	4
	April 1	152	308	605	170	10	46	28	4	5	18	1346	4
2007/08	July 1	152	308	605	170	10	46	28	4	5	18	1346	4
	October 1	174	386	408	170	10	143	28	4	5	18	1346	4
	January 1	173	386	408	166	10	143	28	4	5	18	1341	4
	April 1	173	386	408	165	10	143	28	4	5	18	1340	4
2008/09	July 1	173	386	408	262	10	46	28	4	5	18	1340	4
	October 1	173	386	408	262	10	46	28	4	5	18	1340	4
	January 1	168	379	408	260	10	47	28	4	5	18	1327	4
	April 1	168	379	408	260	10	47	28	4	5	18	1327	4
2009/10	July 1	192	379	384	260	10	47	28	4	5	18	1327	4
	October 1	232	456	241	286	10	47	28	4	5	18	1327	4
	January 1	251	496	241	227	10	47	28	4	5	18	1327	4
	April 1	251	496	241	227	10	47	28	4	5	18	1327	4

