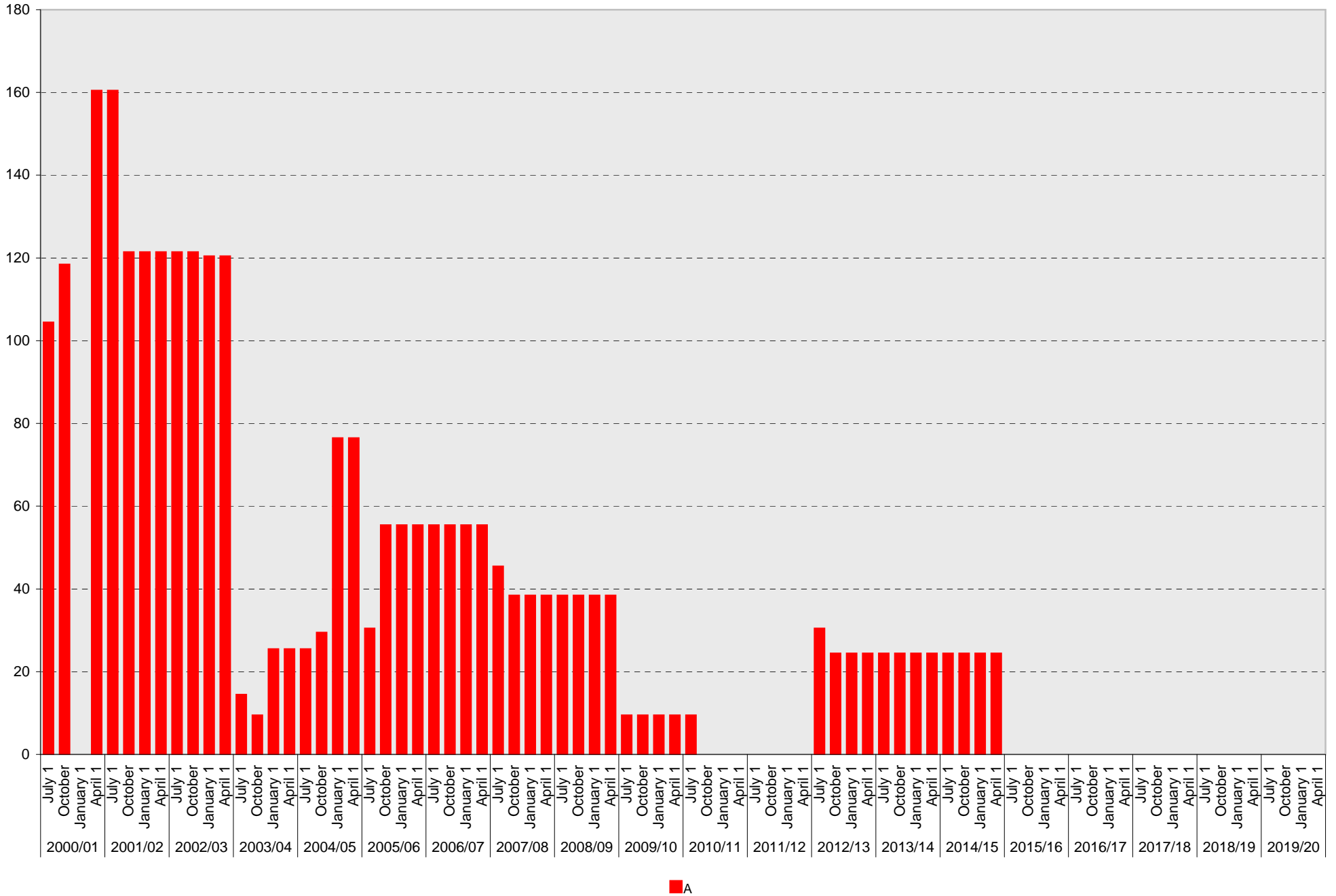


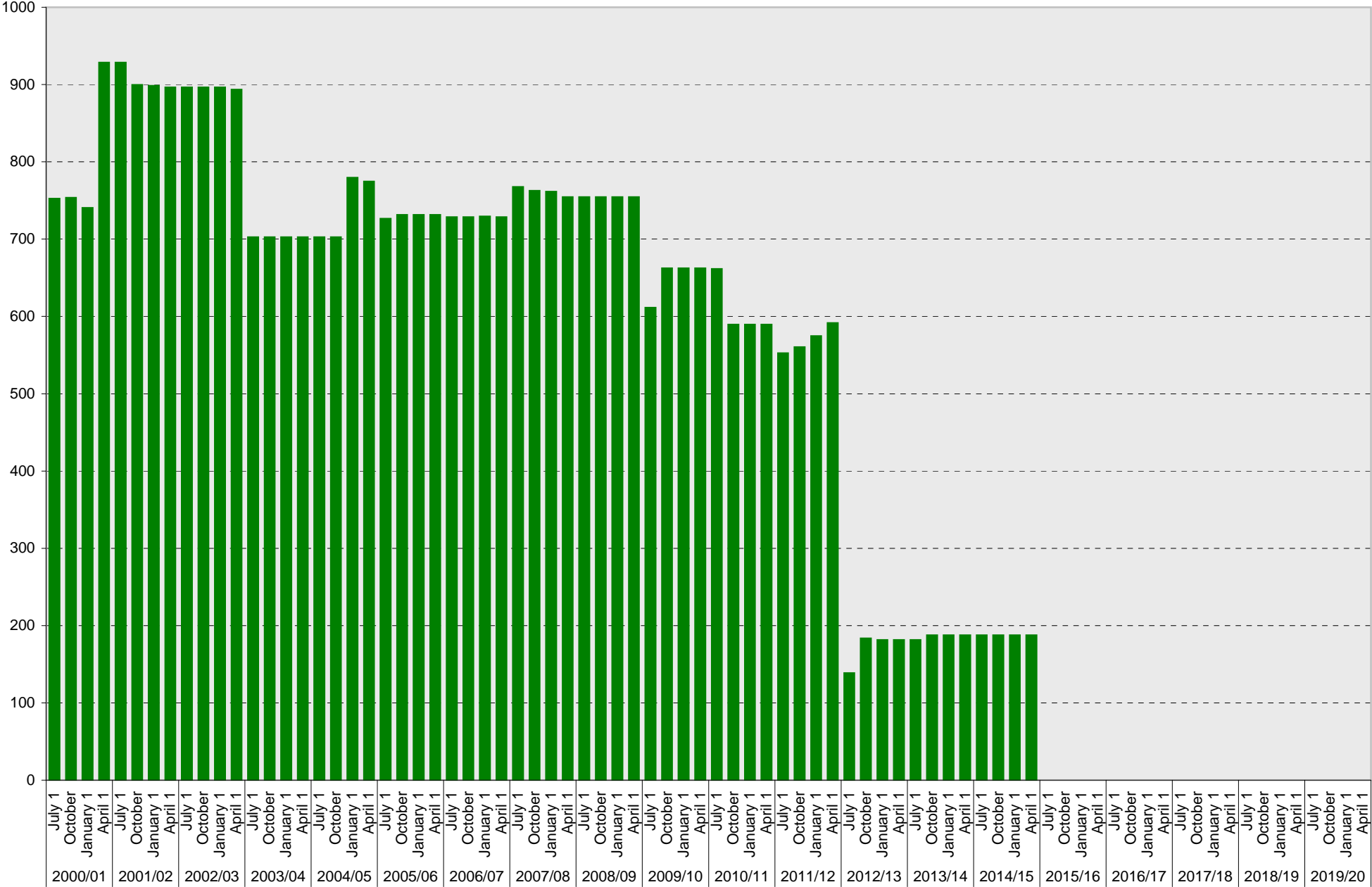
University of California, San Diego Parking Space Inventory

North Campus: A Parking Spaces



University of California, San Diego Parking Space Inventory

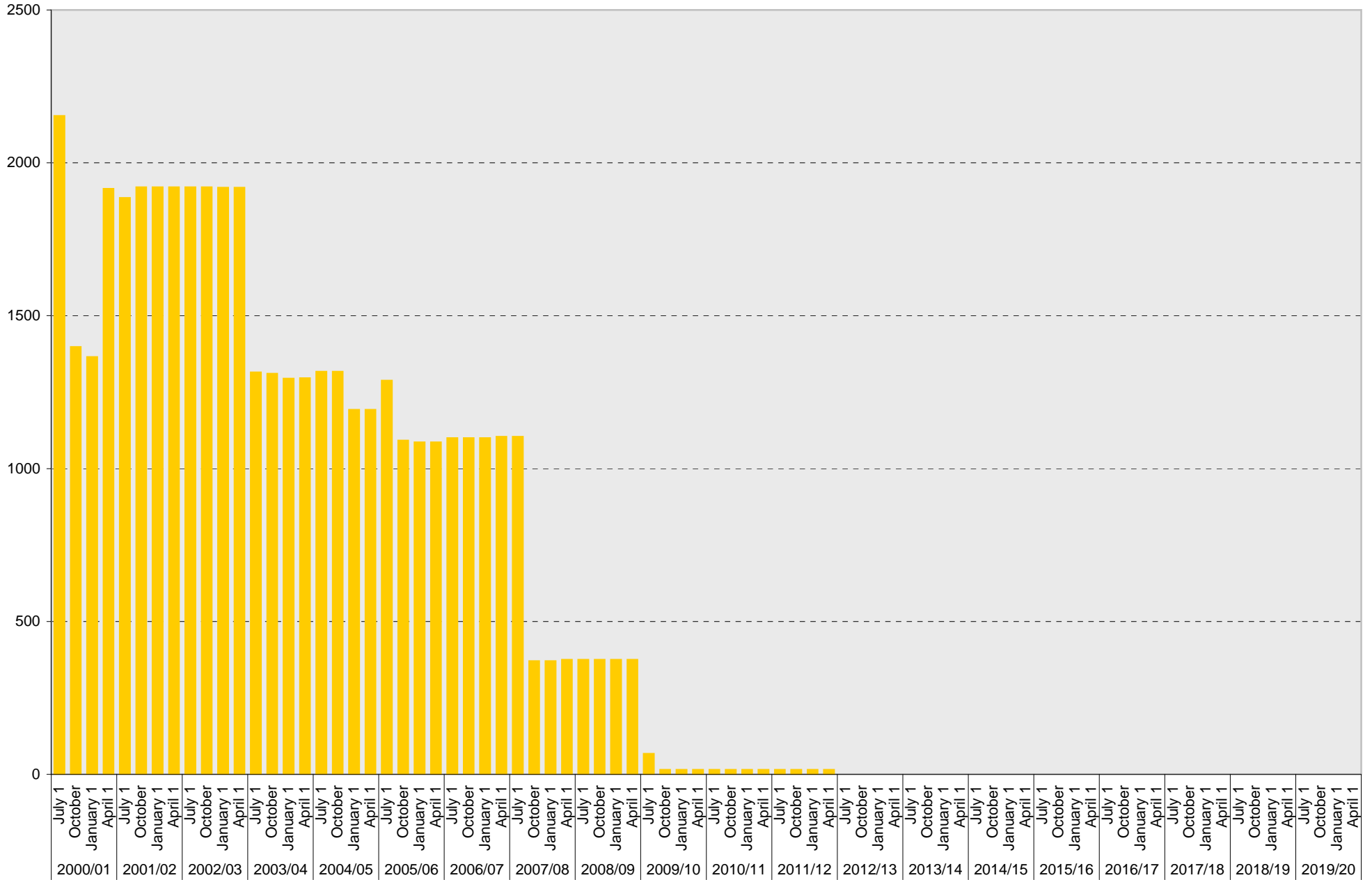
North Campus: B Parking Spaces



■ B

University of California, San Diego Parking Space Inventory

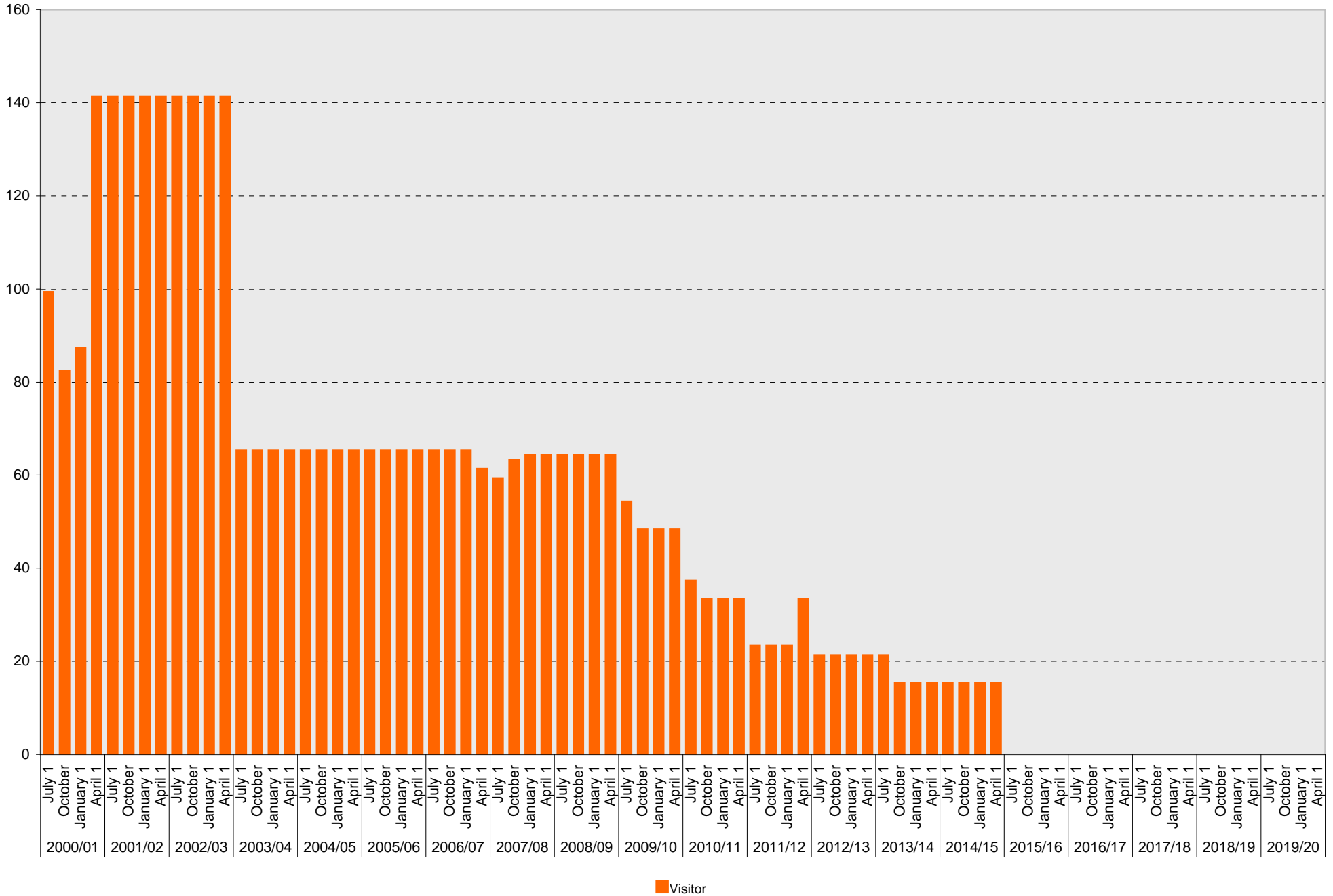
North Campus: S Parking Spaces



■ S

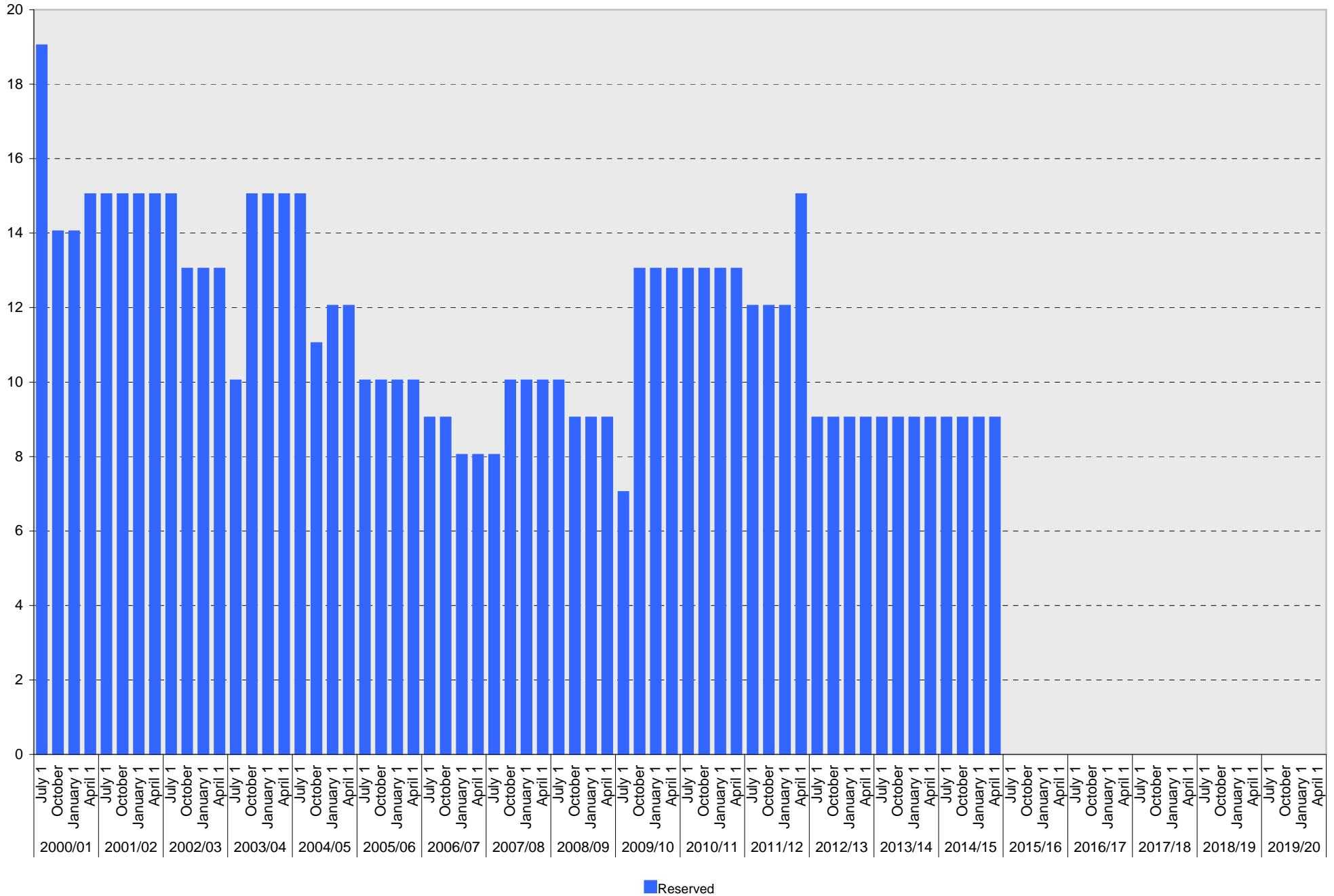
University of California, San Diego Parking Space Inventory

North Campus: Visitor Parking Spaces



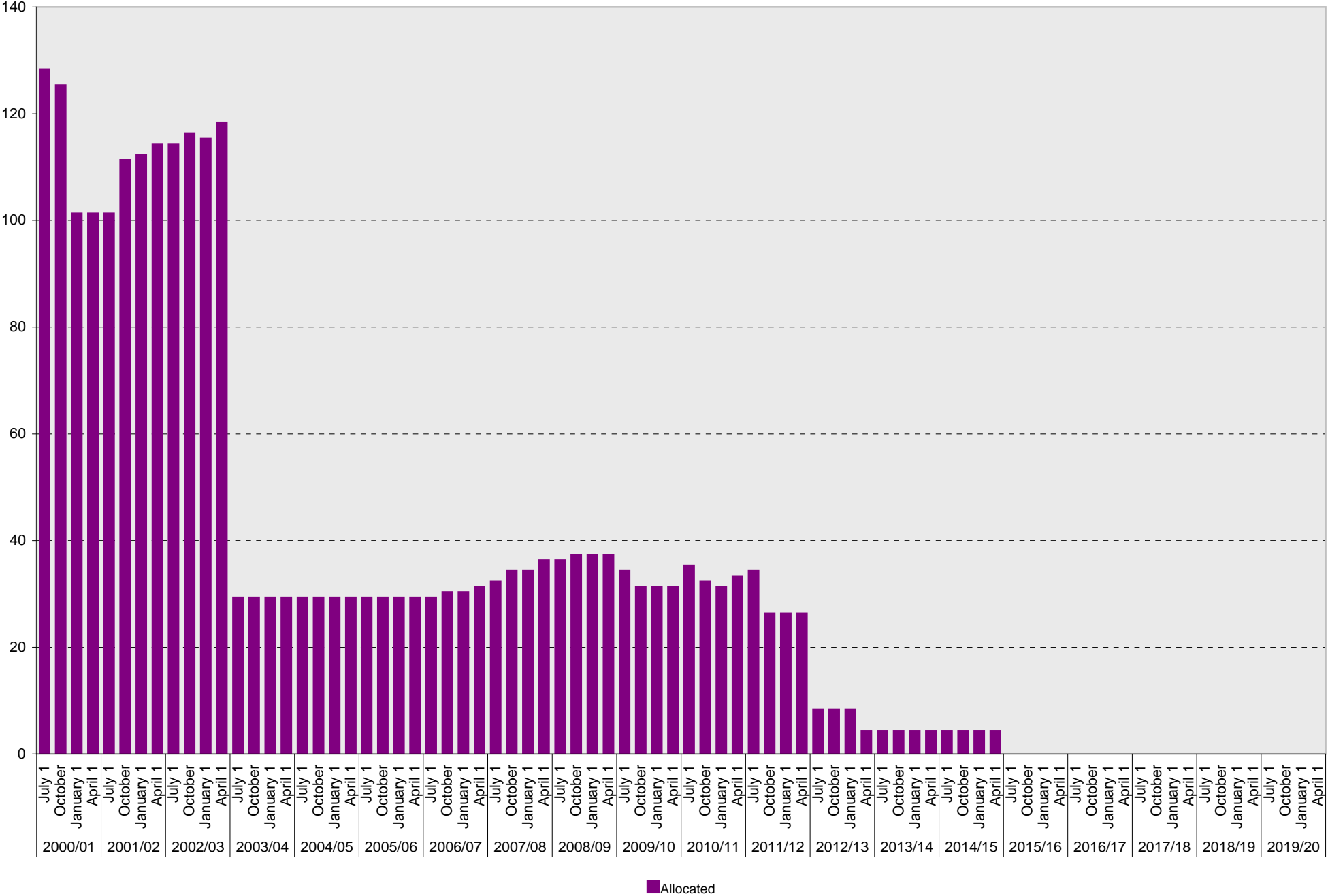
University of California, San Diego Parking Space Inventory

North Campus: Reserved Parking Spaces



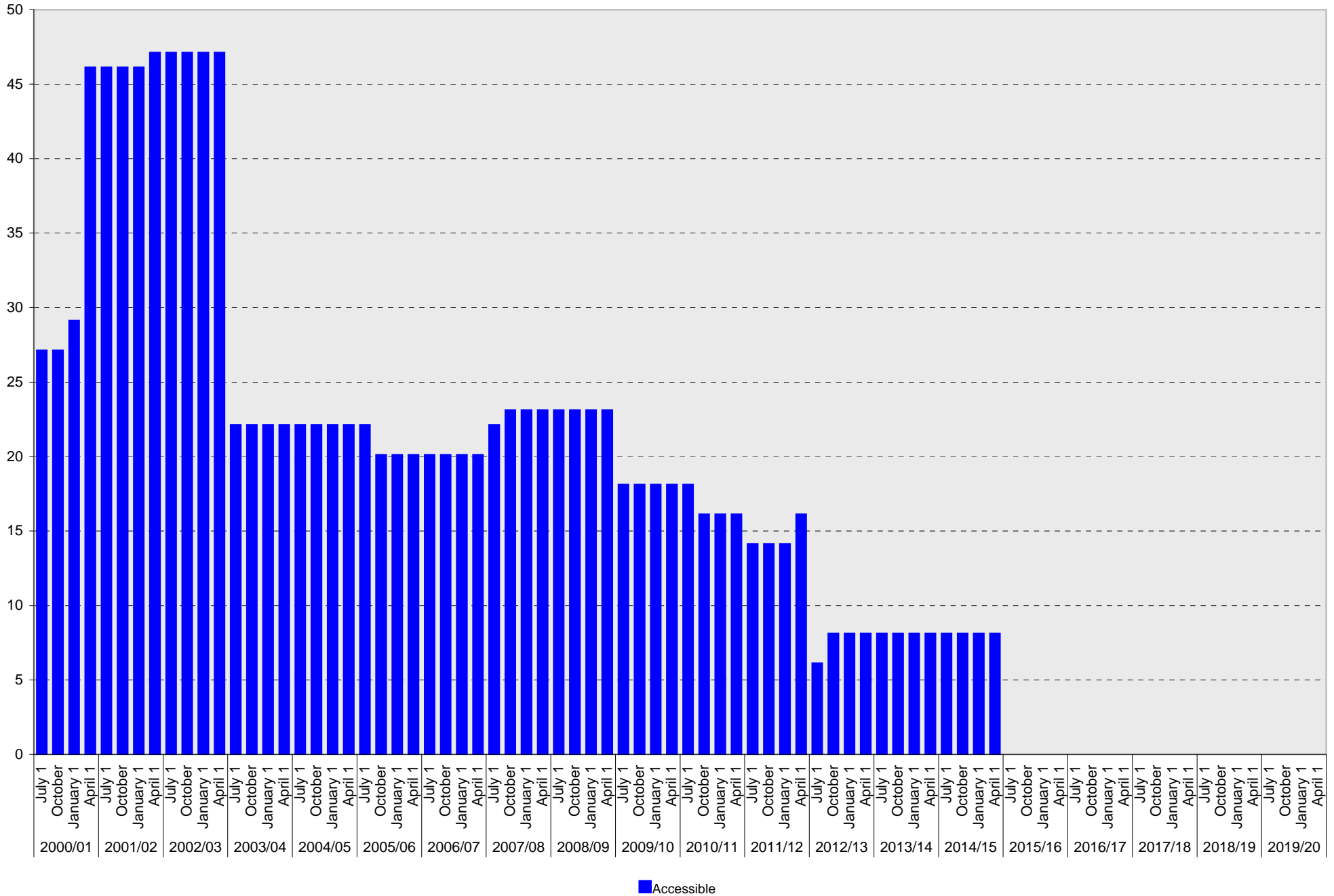
University of California, San Diego Parking Space Inventory

North Campus: Allocated Parking Spaces



University of California, San Diego Parking Space Inventory

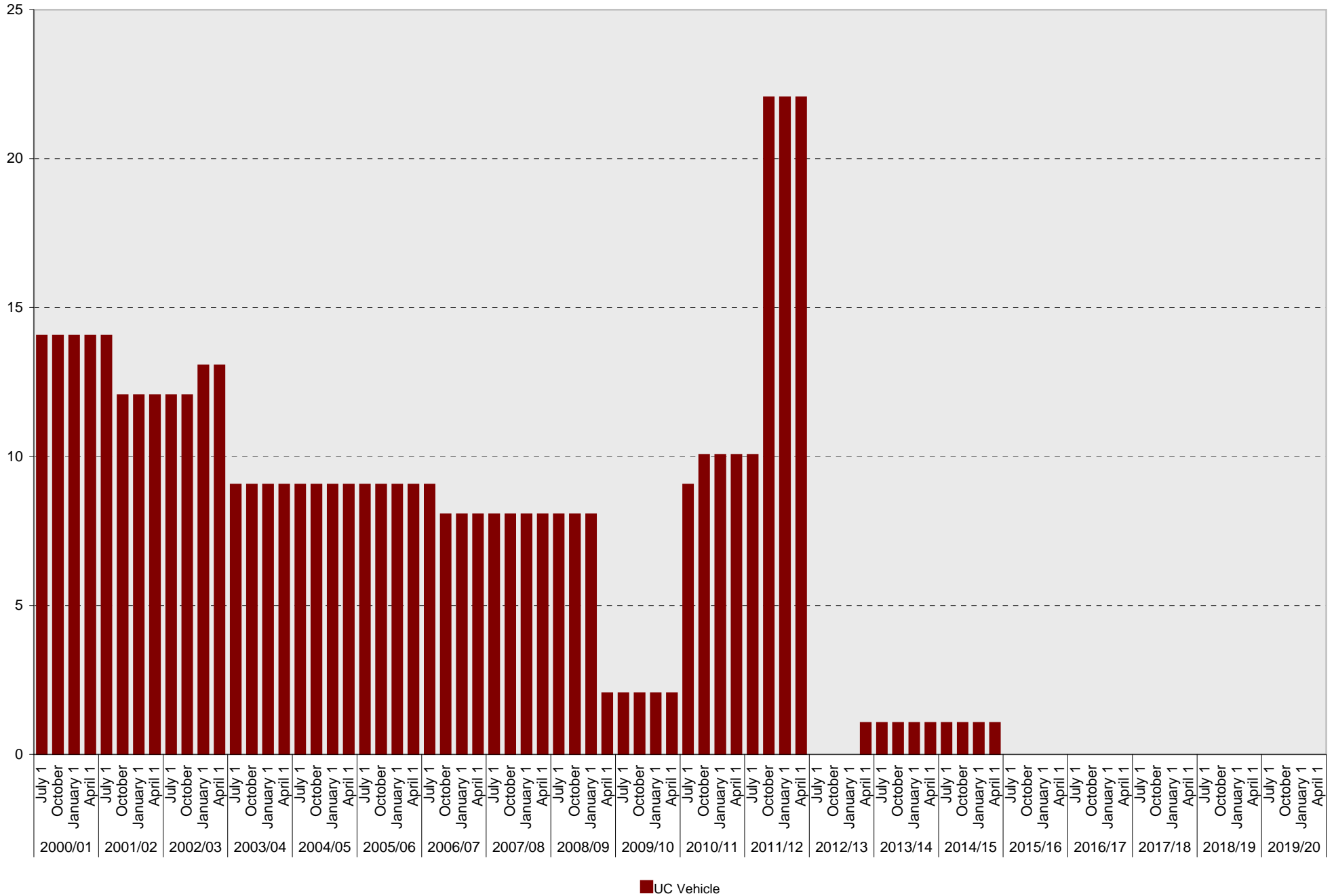
North Campus: Accessible Parking Spaces



■ Accessible

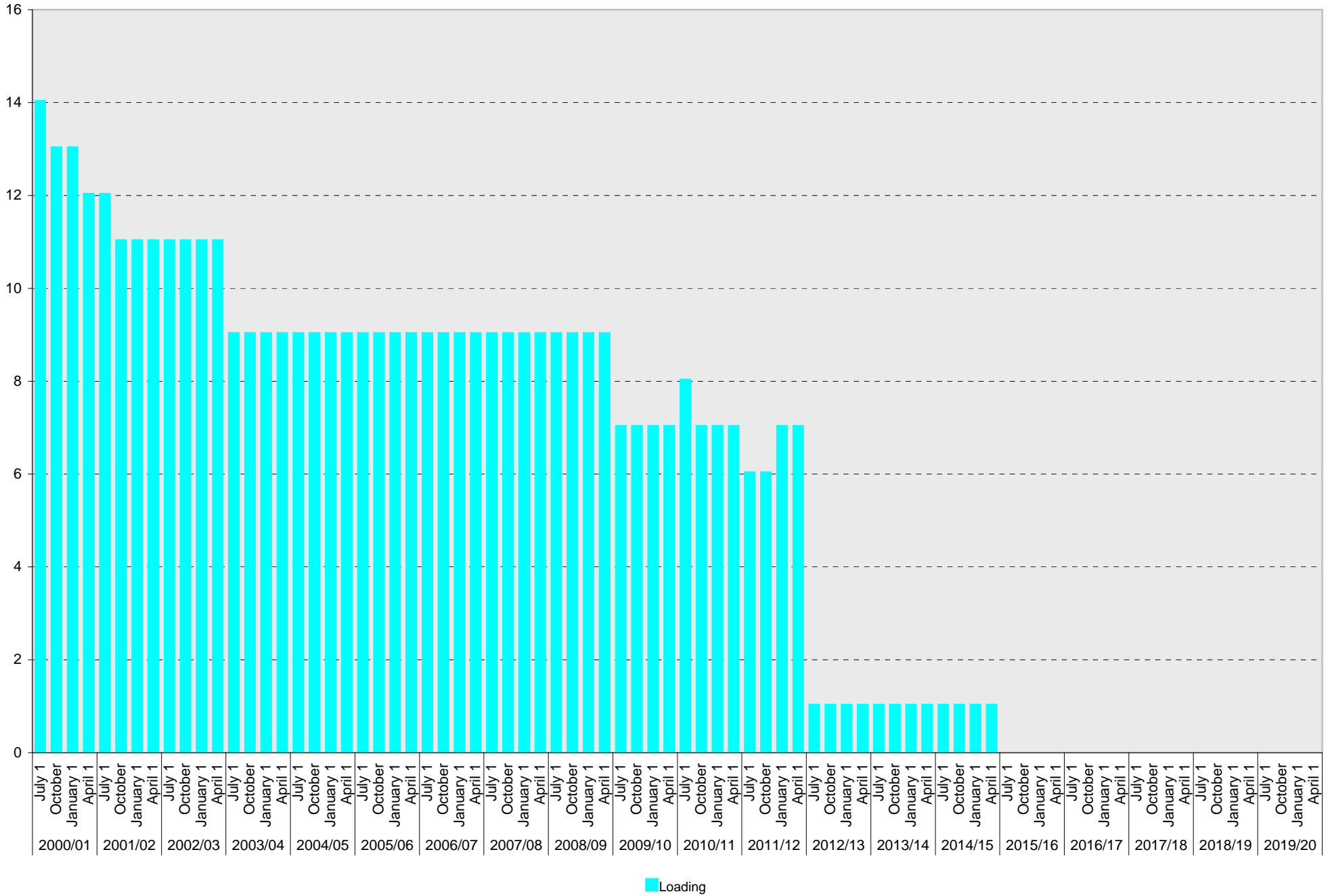
University of California, San Diego Parking Space Inventory

North Campus: UC Vehicle Parking Spaces



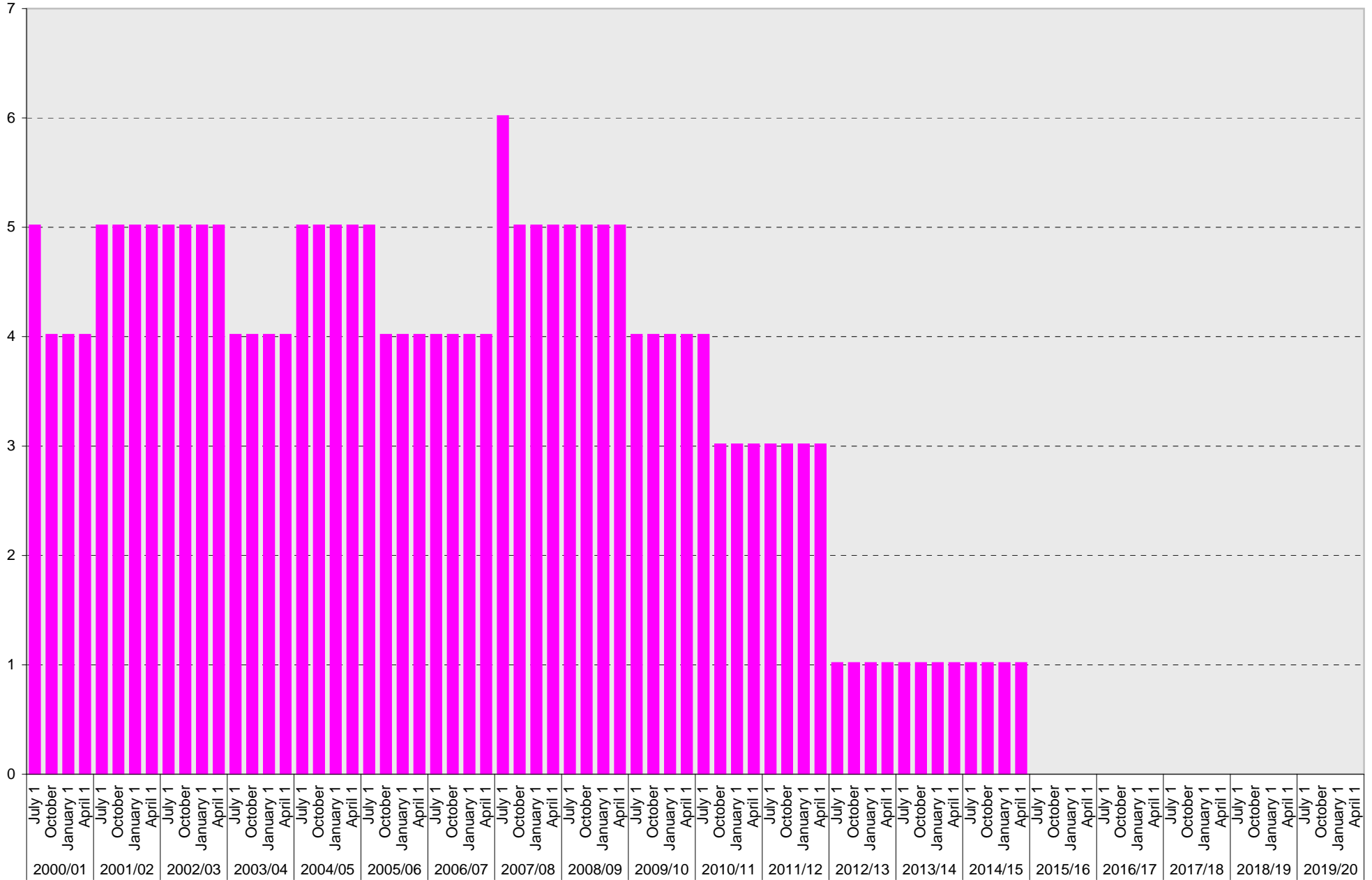
University of California, San Diego Parking Space Inventory

North Campus: Loading Parking Spaces



University of California, San Diego Parking Space Inventory

North Campus: Motorcycle Parking Sections



■ Motorcycle

University of California, San Diego Parking Space Inventory
North Campus

Date		Parking Spaces											Motorcycle Parking Sections
		A	B	S	Visitor	Reserved	Allocated	Accessible	UC Vehicle	Service Yard	Loading	Total	
2000/01	July 1	104	750	2147	99	19	128	27	14	11	14	3313	5
	October 1	118	751	1392	82	14	125	27	14	9	13	2545	4
	January 1		738	1359	87	14	101	29	14	9	13	2364	4
	April 1	160	926	1909	141	15	101	46	14	8	12	3332	4
2001/02	July 1	160	926	1879	141	15	101	46	14	8	12	3302	5
	October 1	121	897	1914	141	15	111	46	12	8	11	3276	5
	January 1	121	896	1914	141	15	112	46	12	8	11	3276	5
	April 1	121	894	1914	141	15	114	47	12	8	11	3277	5
2002/03	July 1	121	894	1914	141	15	114	47	12	8	11	3277	5
	October 1	121	894	1914	141	13	116	47	12	8	11	3277	5
	January 1	120	894	1913	141	13	115	47	13	8	11	3275	5
	April 1	120	891	1913	141	13	118	47	13	8	11	3275	5
2003/04	July 1	14	700	1309	65	10	29	22	9	6	9	2173	4
	October 1	9	700	1304	65	15	29	22	9	6	9	2168	4
	January 1	25	700	1288	65	15	29	22	9	6	9	2168	4
	April 1	25	700	1290	65	15	29	22	9	6	9	2170	4
2004/05	July 1	25	700	1311	65	15	29	22	9	6	9	2191	5
	October 1	29	700	1311	65	11	29	22	9	6	9	2191	5
	January 1	76	777	1186	65	12	29	22	9	6	9	2191	5
	April 1	76	772	1186	65	12	29	22	9	6	9	2186	5
2005/06	July 1	30	724	1282	65	10	29	22	9	6	9	2186	5
	October 1	55	729	1086	65	10	29	20	9	6	9	2018	4
	January 1	55	729	1080	65	10	29	20	9	6	9	2012	4
	April 1	55	729	1080	65	10	29	20	9	6	9	2012	4
2006/07	July 1	55	726	1094	65	9	29	20	9	6	9	2022	4
	October 1	55	726	1094	65	9	30	20	8	6	9	2022	4
	January 1	55	727	1094	65	8	30	20	8	6	9	2022	4
	April 1	55	726	1098	61	8	31	20	8	6	9	2022	4
2007/08	July 1	45	765	1098	59	8	32	22	8	6	9	2052	6
	October 1	38	760	364	63	10	34	23	8	6	9	1315	5
	January 1	38	759	364	64	10	34	23	8	6	9	1315	5
	April 1	38	752	369	64	10	36	23	8	6	9	1315	5
2008/09	July 1	38	752	369	64	10	36	23	8	6	9	1315	5
	October 1	38	752	369	64	9	37	23	8	6	9	1315	5
	January 1	38	752	369	64	9	37	23	8	6	9	1315	5
	April 1	38	752	369	64	9	37	23	2	6	9	1309	5
2009/10	July 1	9	609	61	54	7	34	18	2	6	7	807	4
	October 1	9	660	9	48	13	31	18	2	6	7	803	4
	January 1	9	660	9	48	13	31	18	2	6	7	803	4
	April 1	9	660	9	48	13	31	18	2	6	7	803	4

