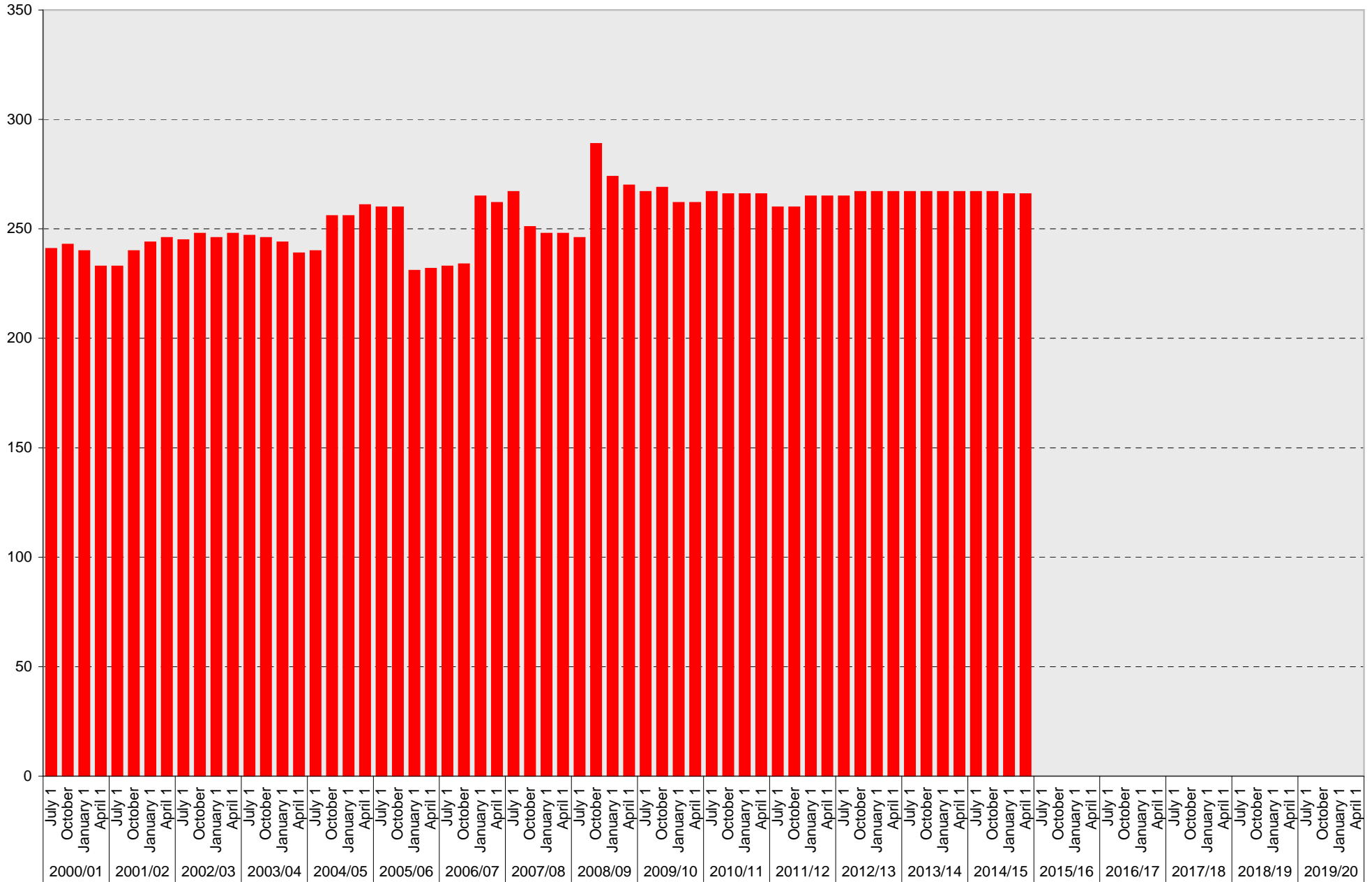


# University of California, San Diego Parking Space Inventory

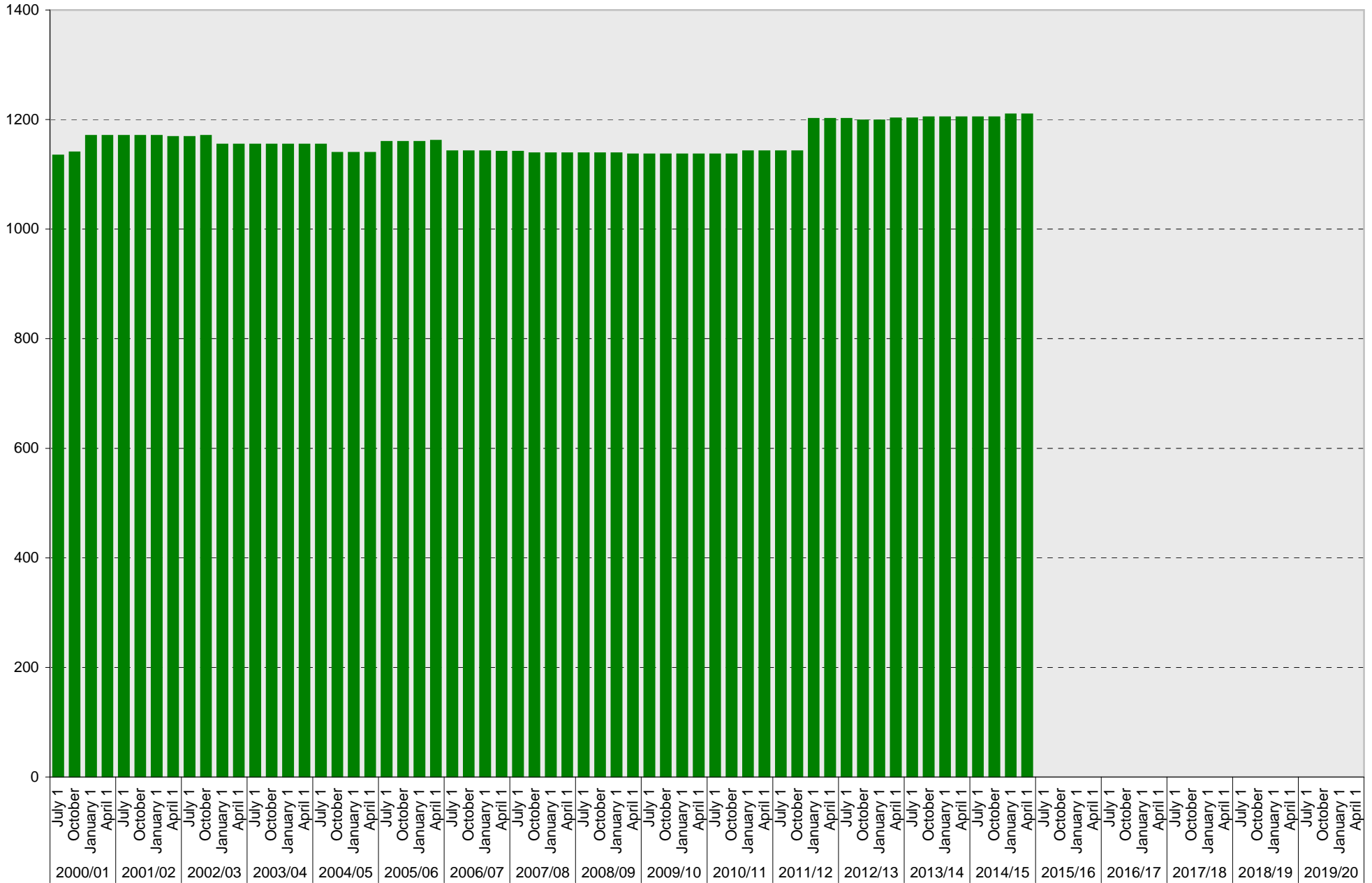
## Medical Center Hillcrest: A Parking Spaces



■ A

# University of California, San Diego Parking Space Inventory

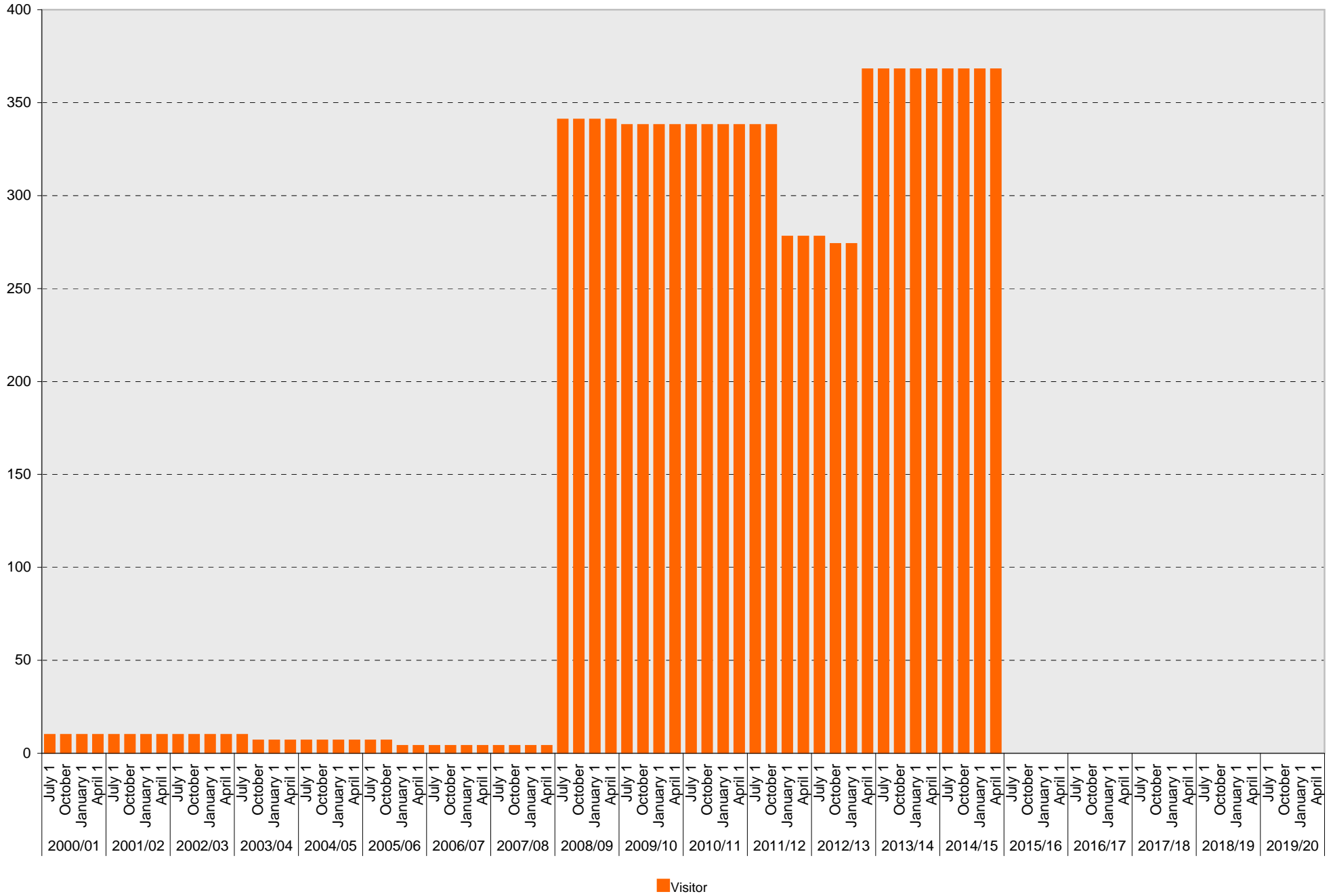
## Medical Center Hillcrest: B Parking Spaces



■ B

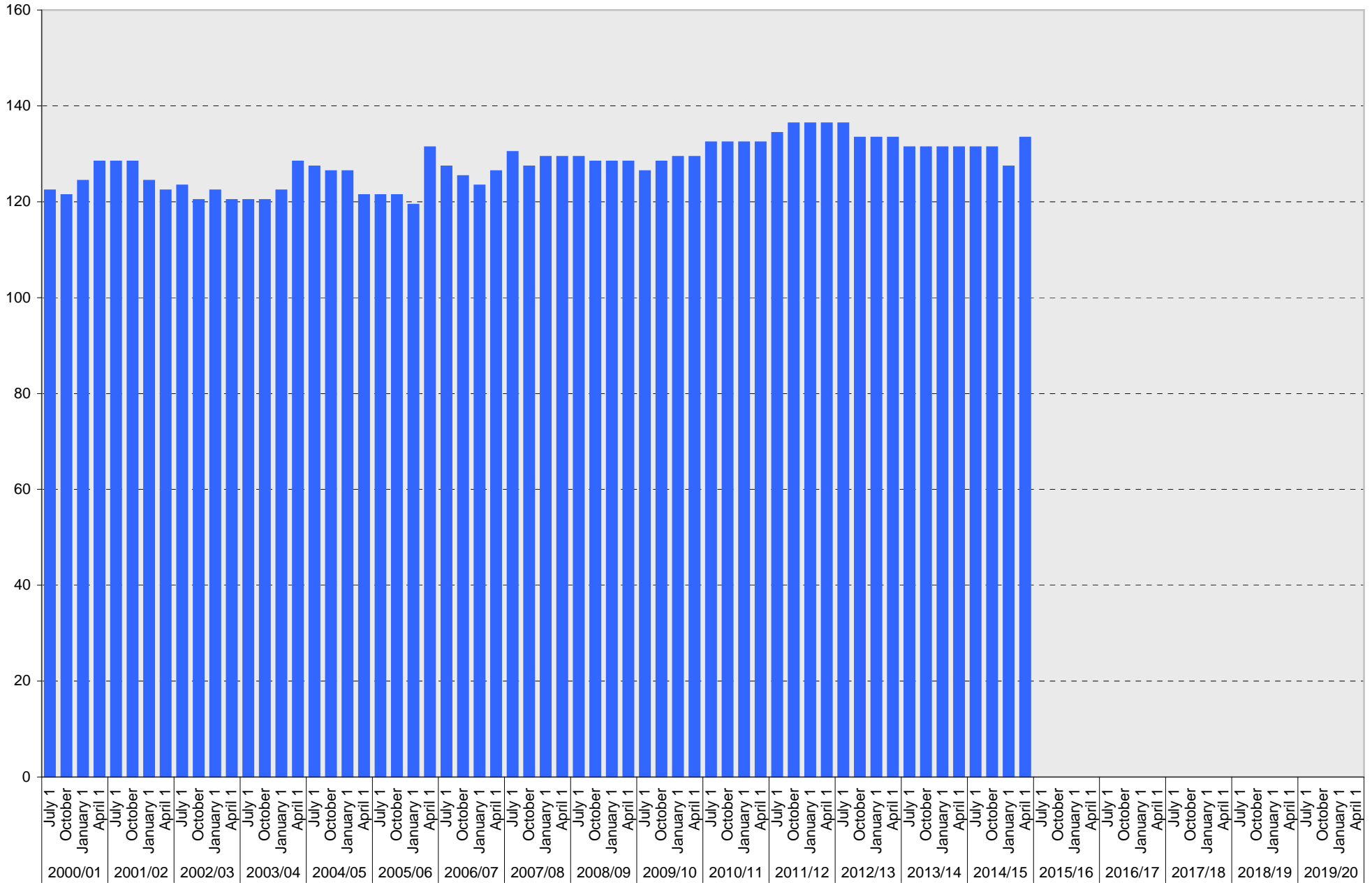
# University of California, San Diego Parking Space Inventory

## Medical Center Hillcrest: Visitor Parking Spaces



# University of California, San Diego Parking Space Inventory

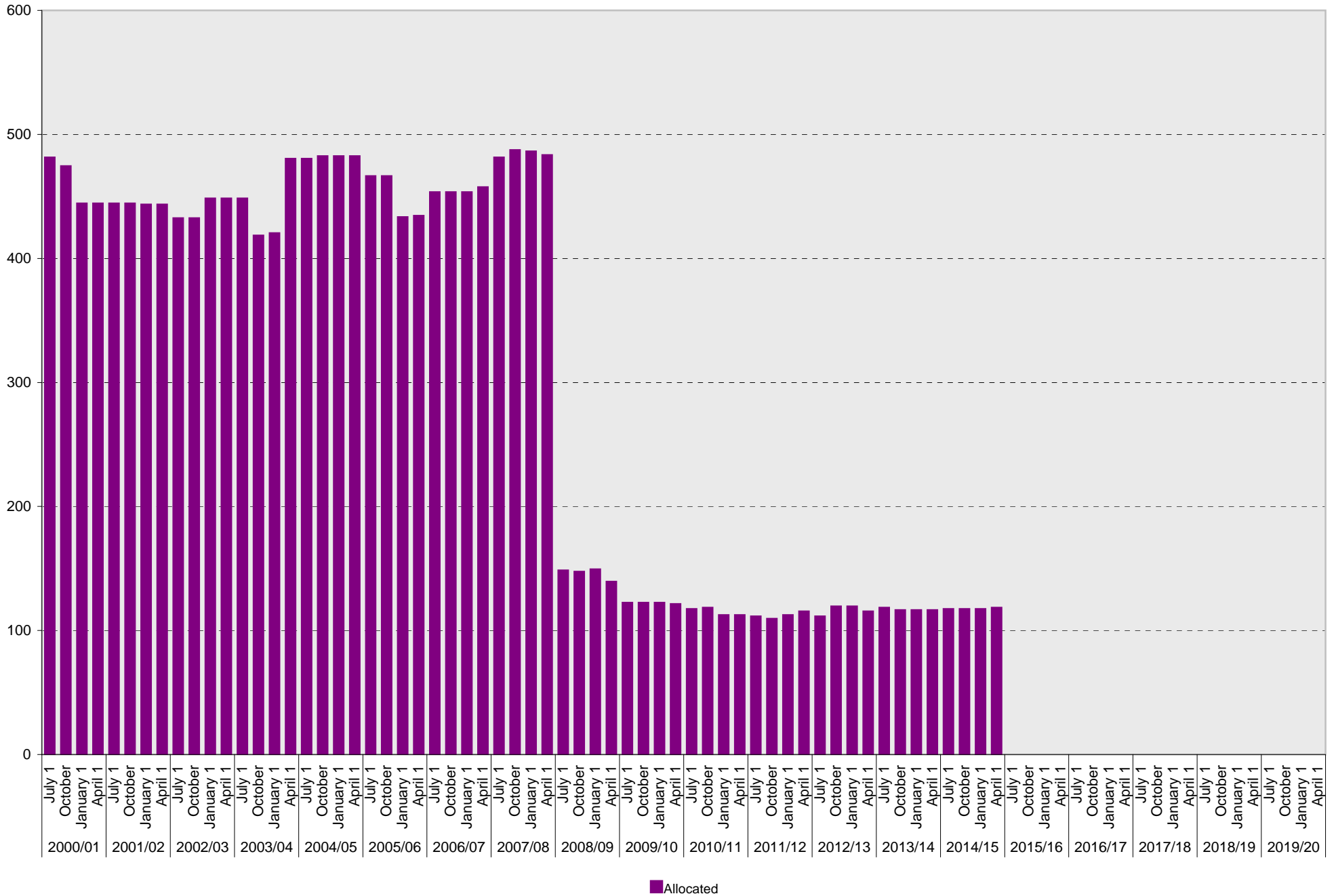
## Medical Center Hillcrest: Reserved Parking Spaces



■ Reserved

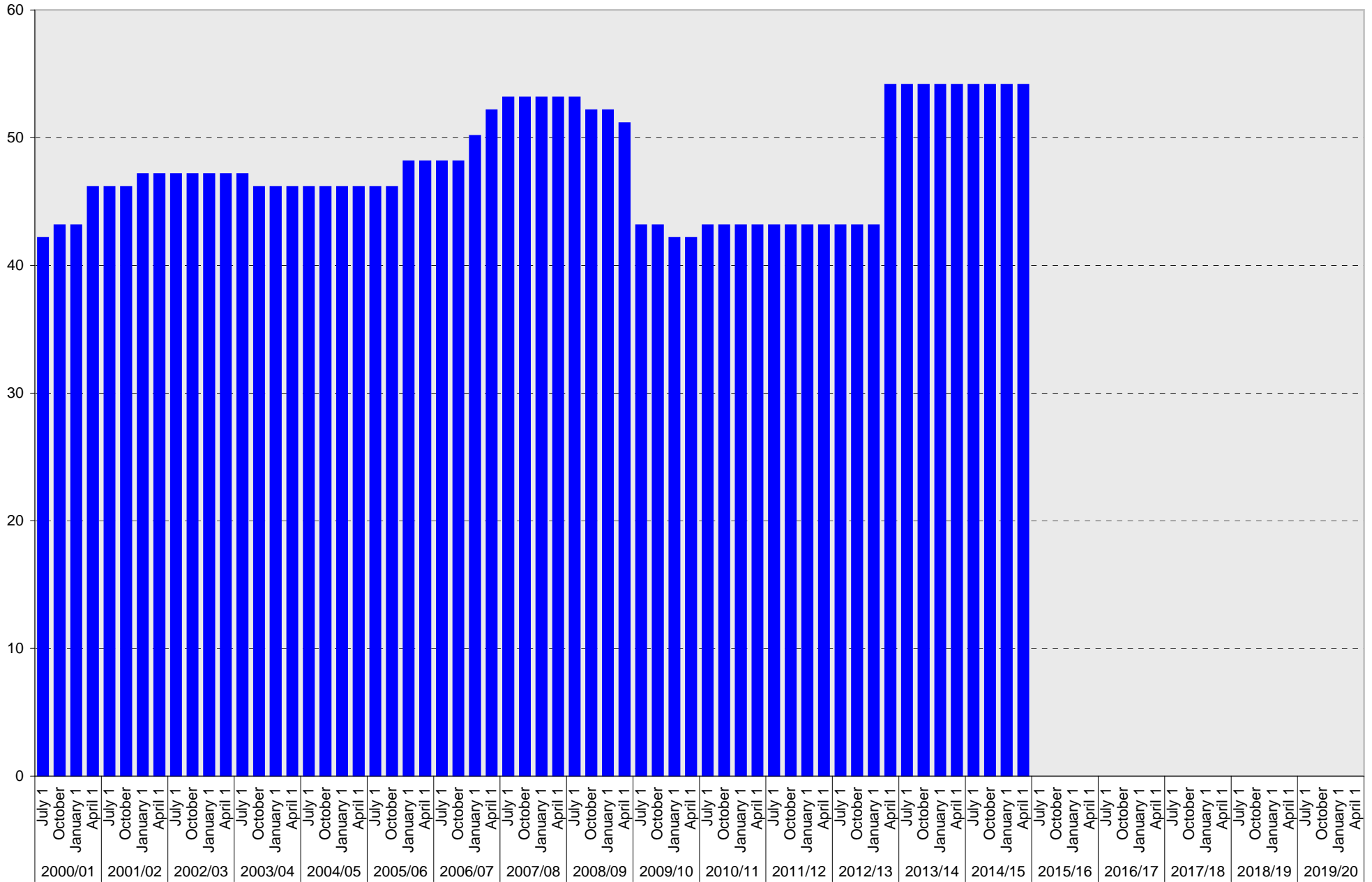
# University of California, San Diego Parking Space Inventory

## Medical Center Hillcrest: Allocated Parking Spaces



# University of California, San Diego Parking Space Inventory

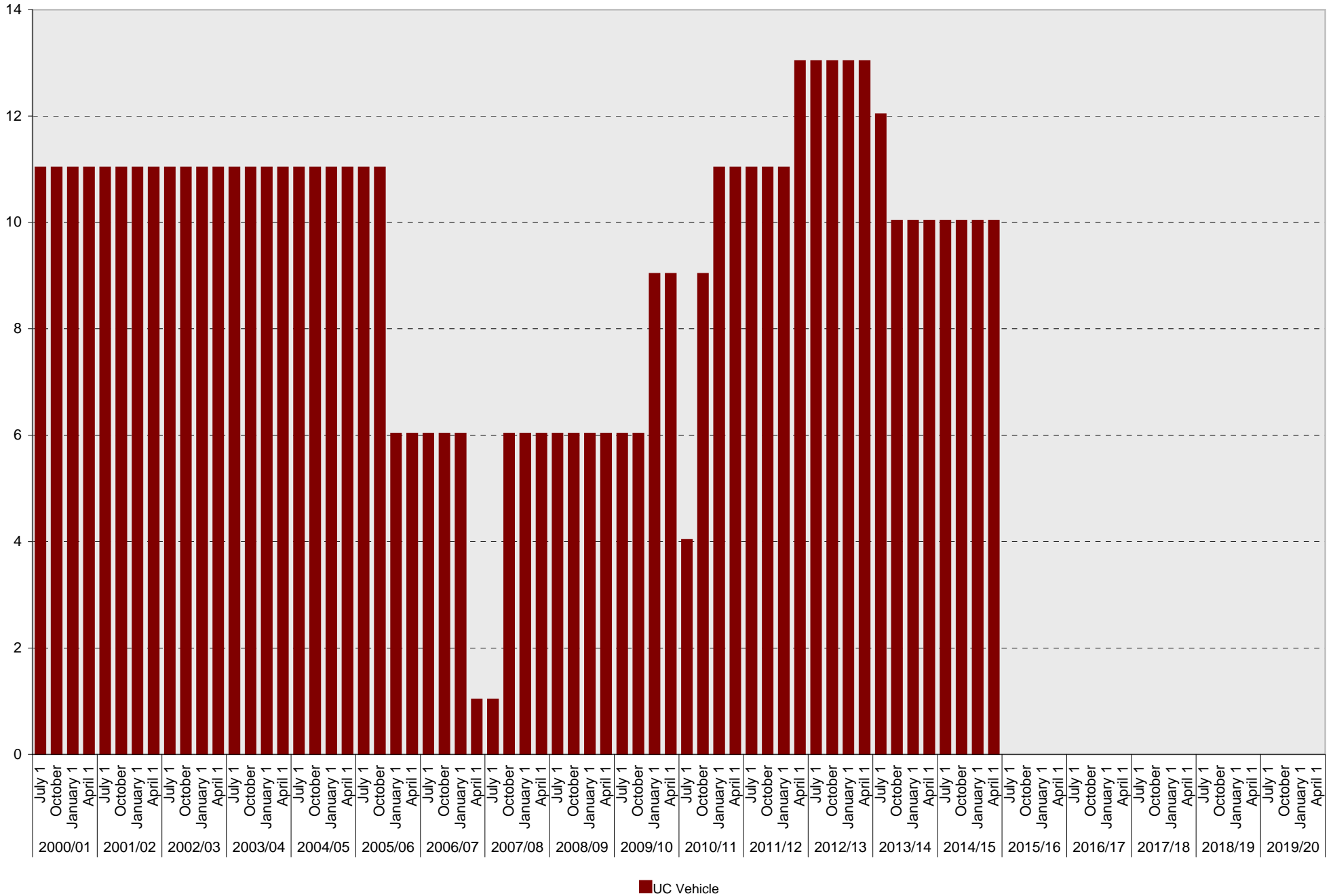
## Medical Center Hillcrest: Accessible Parking Spaces



■ Accessible

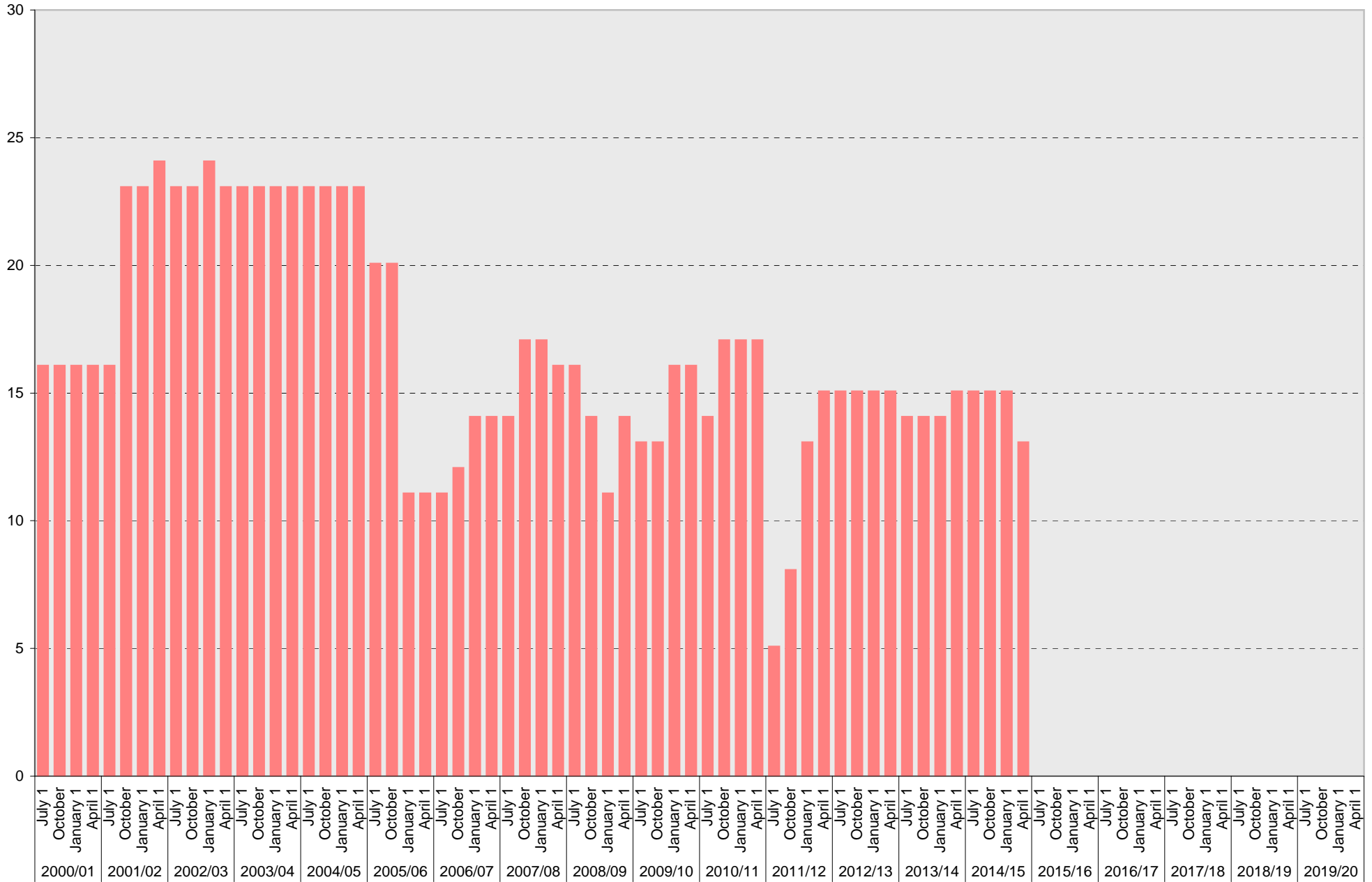
# University of California, San Diego Parking Space Inventory

## Medical Center Hillcrest: UC Vehicle Parking Spaces



# University of California, San Diego Parking Space Inventory

## Medical Center Hillcrest: Service Yard Parking Spaces

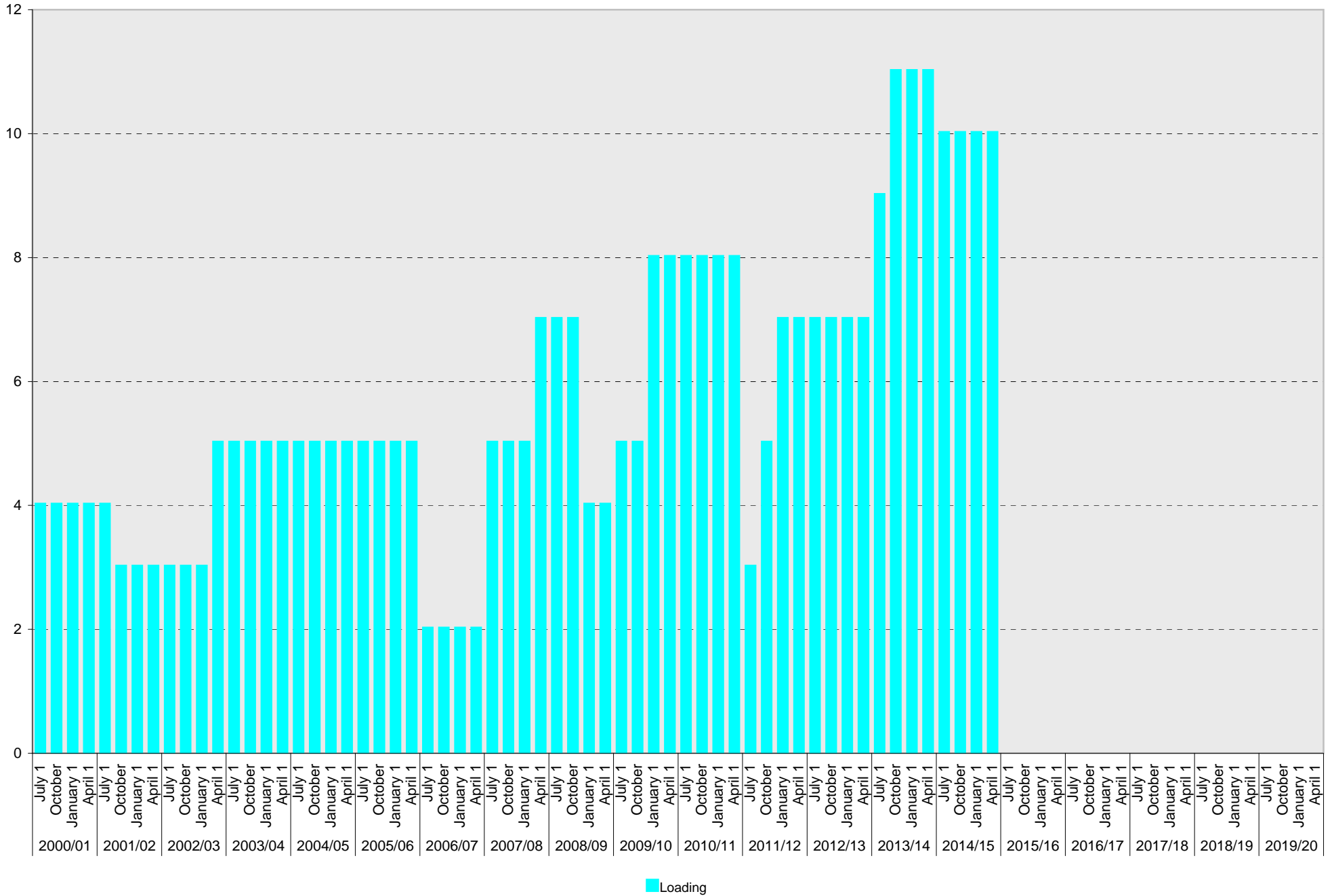


■ Service Yard



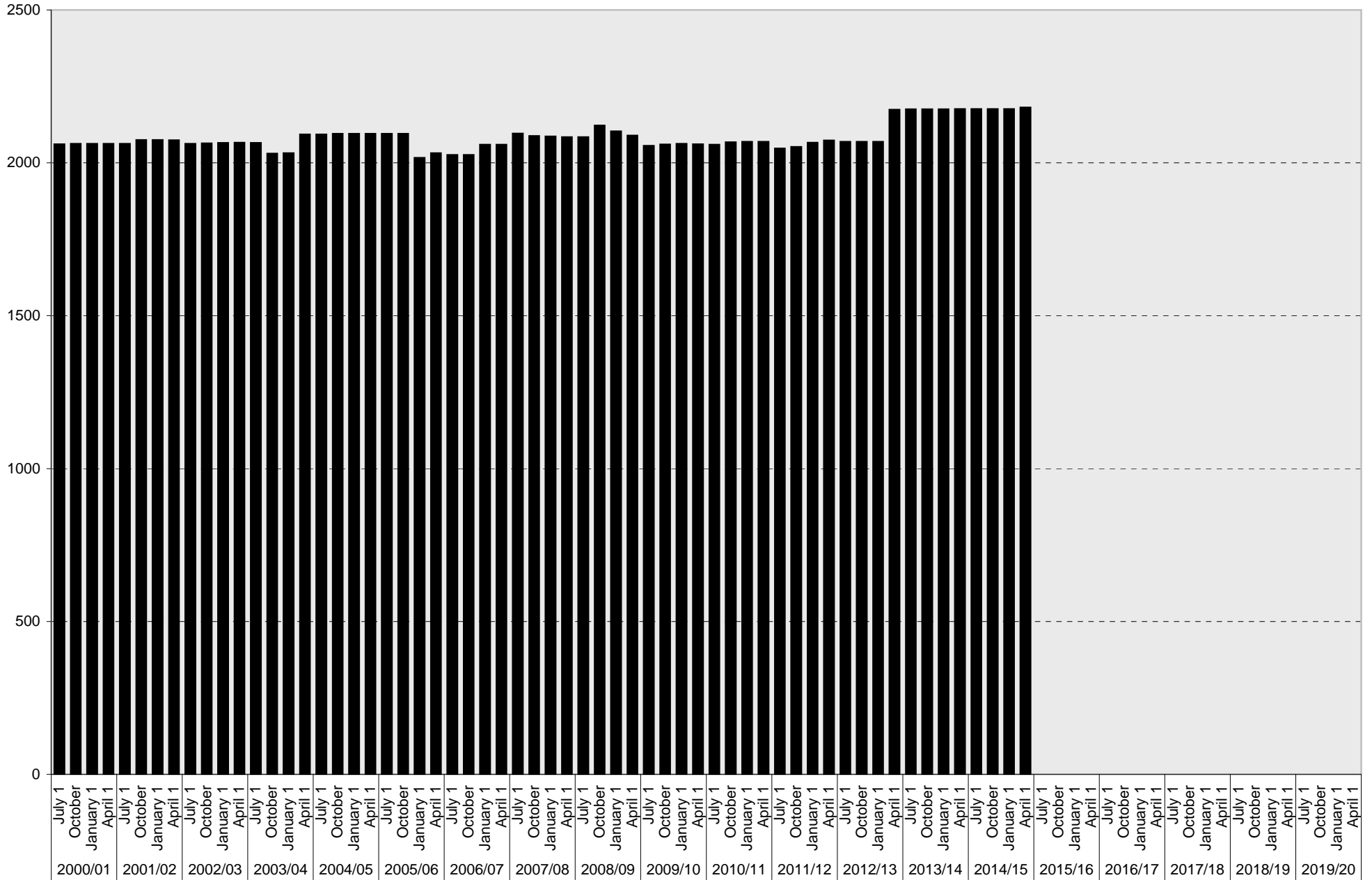
# University of California, San Diego Parking Space Inventory

## Medical Center Hillcrest: Loading Parking Spaces



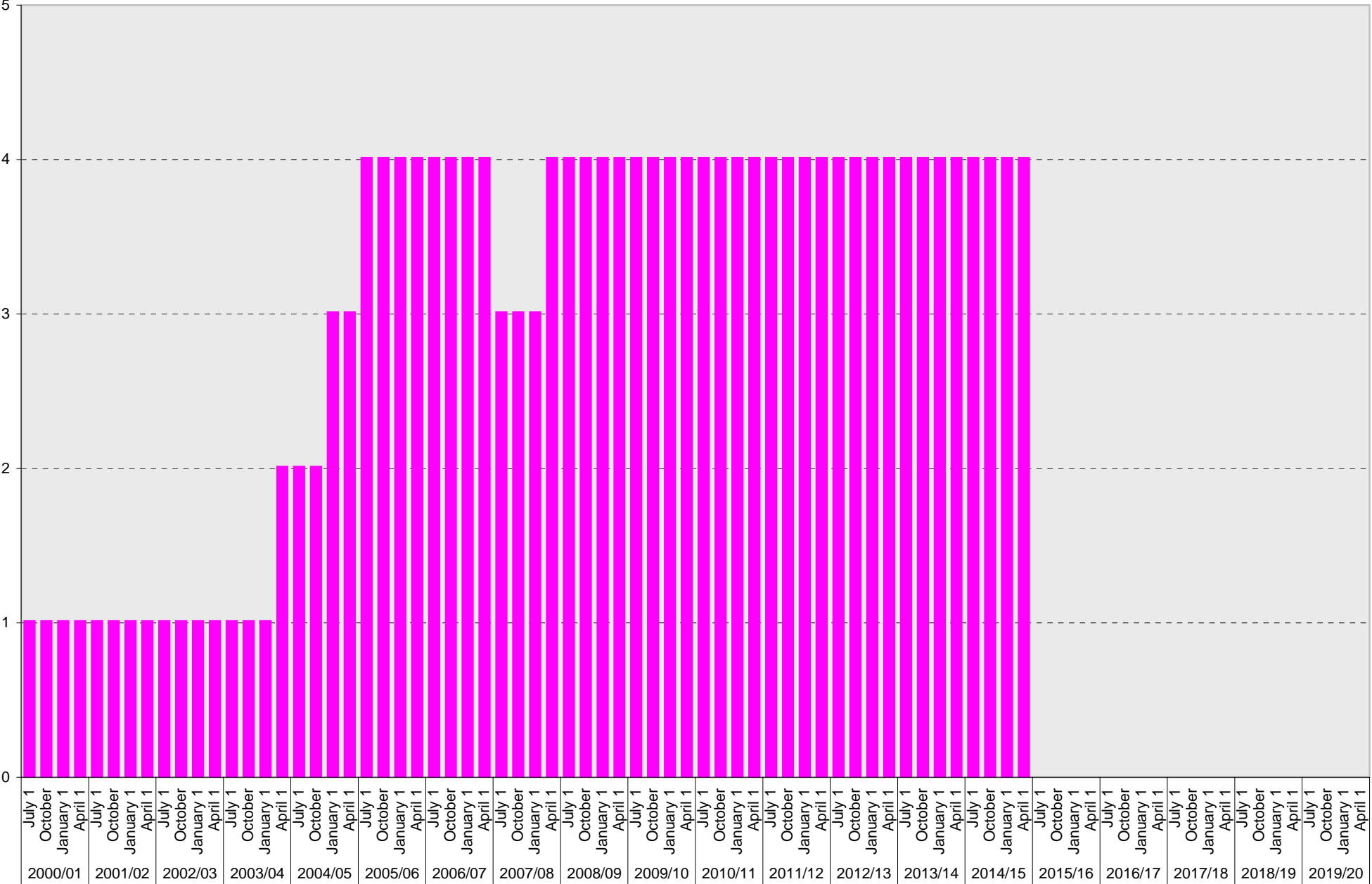
# University of California, San Diego Parking Space Inventory

## Medical Center Hillcrest: Total Parking Spaces



■ Total

University of California, San Diego Parking Space Inventory  
Medical Center Hillcrest: Motorcycle Parking Sections



Motorcycle

University of California, San Diego Parking Space Inventory  
Medical Center Hillcrest

Date		Parking Spaces										Motorcycle Parking Sections	
		A	B	S	Visitor	Reserved	Allocated	Accessible	UC Vehicle	Service Yard	Loading		Total
2000/01	July 1	240	1131		9	122	480	42	11	16	4	2055	1
	October 1	242	1137		9	121	473	43	11	16	4	2056	1
	January 1	239	1167		9	124	443	43	11	16	4	2056	1
	April 1	232	1167		9	128	443	46	11	16	4	2056	1
2001/02	July 1	232	1167		9	128	443	46	11	16	4	2056	1
	October 1	239	1167		9	128	443	46	11	23	3	2069	1
	January 1	243	1167		9	124	442	47	11	23	3	2069	1
	April 1	245	1165		9	122	442	47	11	24	3	2068	1
2002/03	July 1	244	1165		9	123	431	47	11	23	3	2056	1
	October 1	247	1167		9	120	431	47	11	23	3	2058	1
	January 1	245	1151		9	122	447	47	11	24	3	2059	1
	April 1	247	1151		9	120	447	47	11	23	5	2060	1
2003/04	July 1	246	1151		9	120	447	47	11	23	5	2059	1
	October 1	245	1151		6	120	417	46	11	23	5	2024	1
	January 1	243	1151		6	122	419	46	11	23	5	2026	1
	April 1	238	1151		6	128	479	46	11	23	5	2087	2
2004/05	July 1	239	1151		6	127	479	46	11	23	5	2087	2
	October 1	255	1136		6	126	481	46	11	23	5	2089	2
	January 1	255	1136		6	126	481	46	11	23	5	2089	3
	April 1	260	1136		6	121	481	46	11	23	5	2089	3
2005/06	July 1	259	1156		6	121	465	46	11	20	5	2089	4
	October 1	259	1156		6	121	465	46	11	20	5	2089	4
	January 1	230	1156		3	119	432	48	6	11	5	2010	4
	April 1	231	1158		3	131	433	48	6	11	5	2026	4
2006/07	July 1	232	1139		3	127	452	48	6	11	2	2020	4
	October 1	233	1139		3	125	452	48	6	12	2	2020	4
	January 1	264	1139		3	123	452	50	6	14	2	2053	4
	April 1	261	1138		3	126	456	52	1	14	2	2053	4
2007/08	July 1	266	1138		3	130	480	53	1	14	5	2090	3
	October 1	250	1135		3	127	486	53	6	17	5	2082	3
	January 1	247	1135		3	129	485	53	6	17	5	2080	3
	April 1	247	1135		3	129	482	53	6	16	7	2078	4
2008/09	July 1	245	1135		340	129	147	53	6	16	7	2078	4
	October 1	288	1135		340	128	146	52	6	14	7	2116	4
	January 1	273	1135		340	128	148	52	6	11	4	2097	4
	April 1	269	1133		340	128	138	51	6	14	4	2083	4
2009/10	July 1	266	1133		337	126	121	43	6	13	5	2050	4
	October 1	268	1133		337	128	121	43	6	13	5	2054	4
	January 1	261	1133		337	129	121	42	9	16	8	2056	4
	April 1	261	1133		337	129	120	42	9	16	8	2055	4

