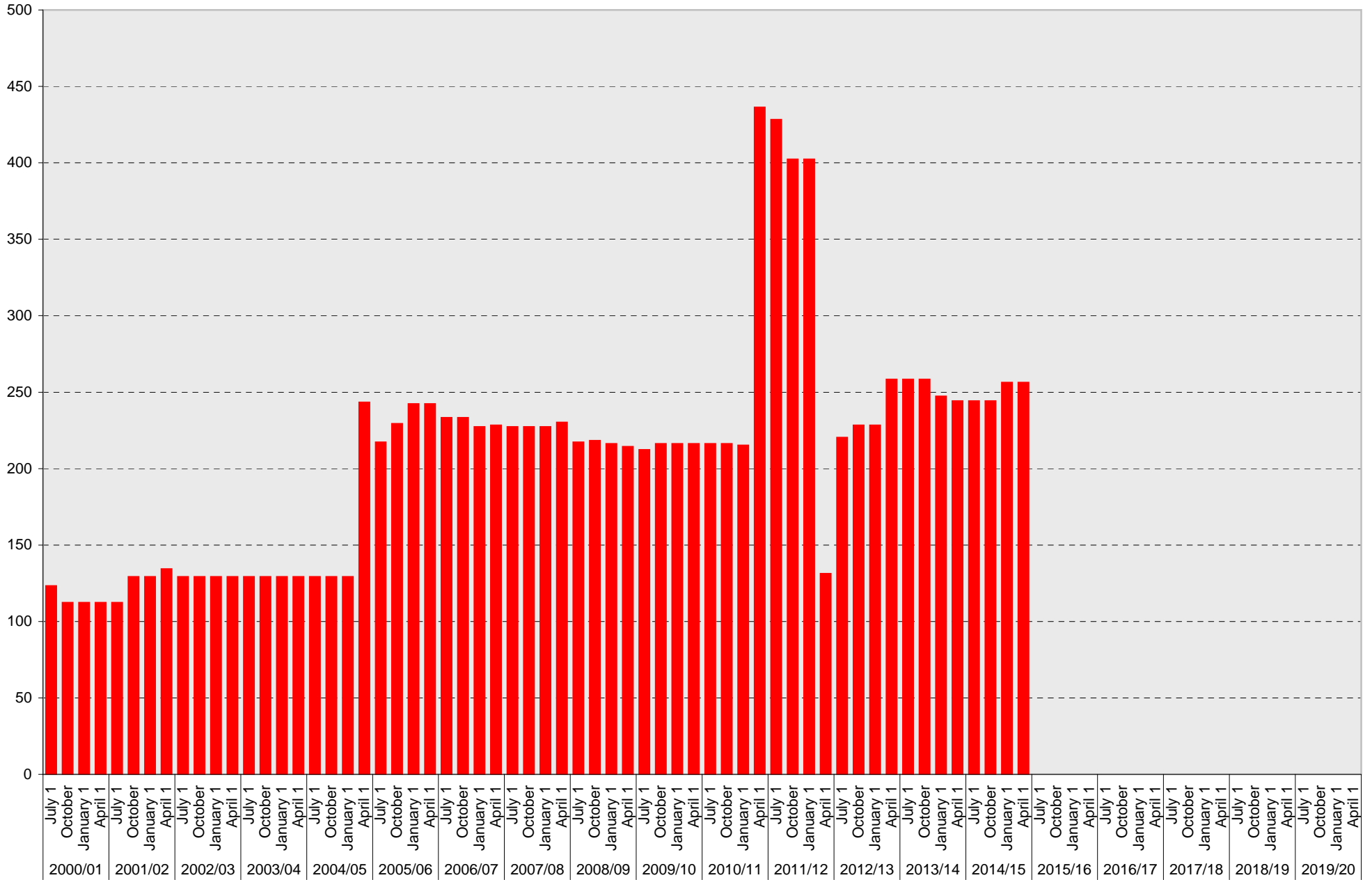


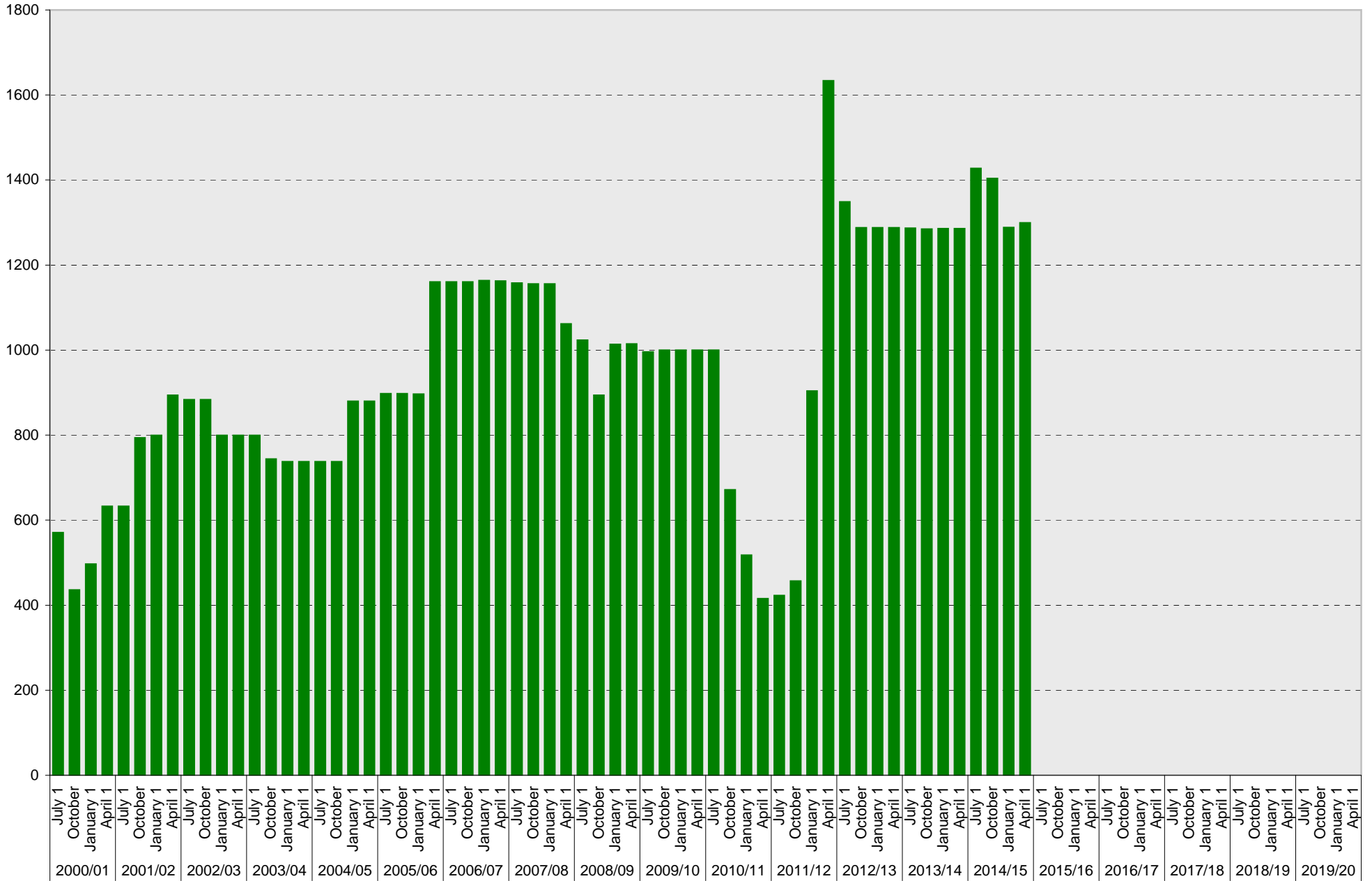
University of California, San Diego Parking Space Inventory East Campus: A Parking Spaces



■ A

University of California, San Diego Parking Space Inventory

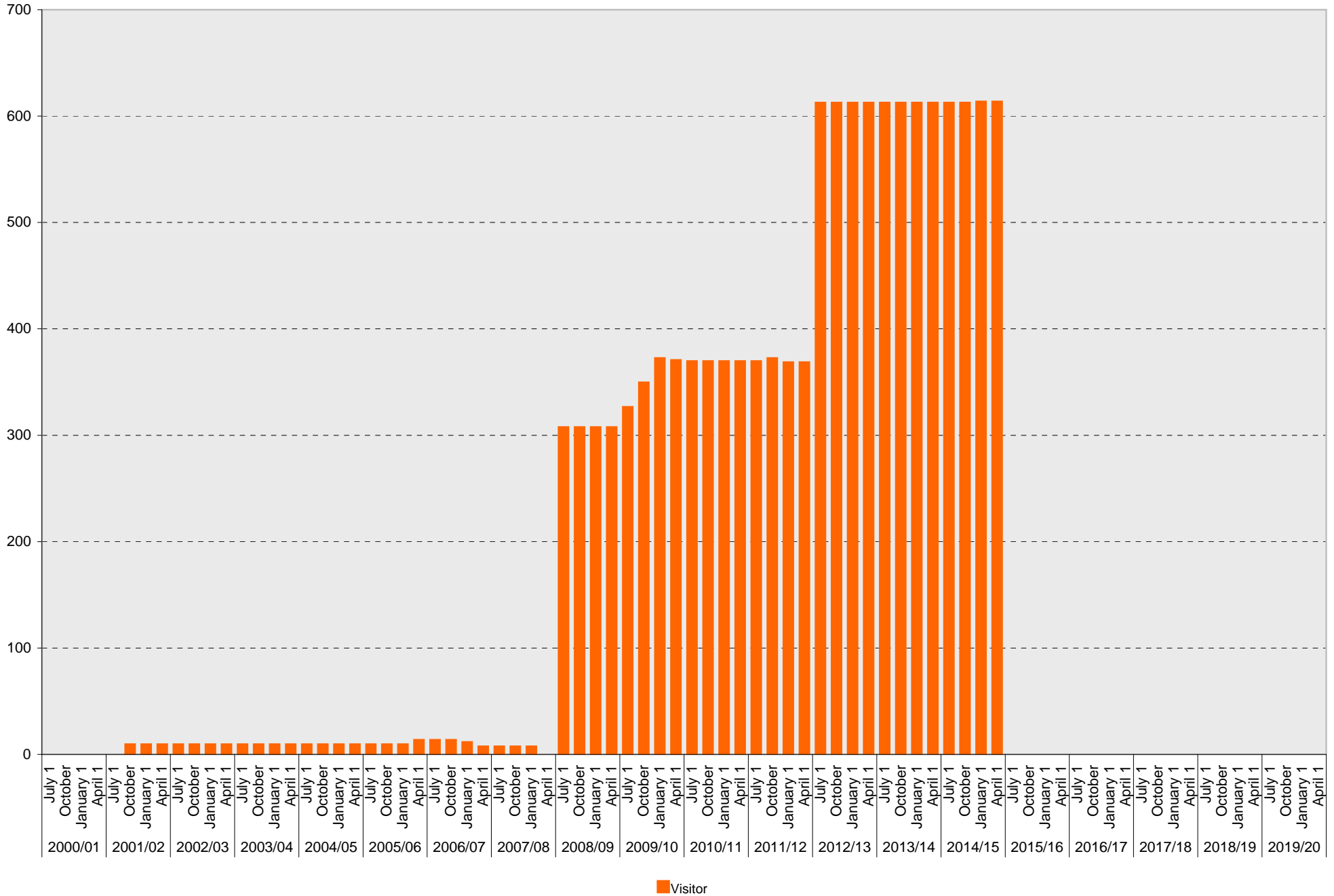
East Campus: B Parking Spaces



■ B

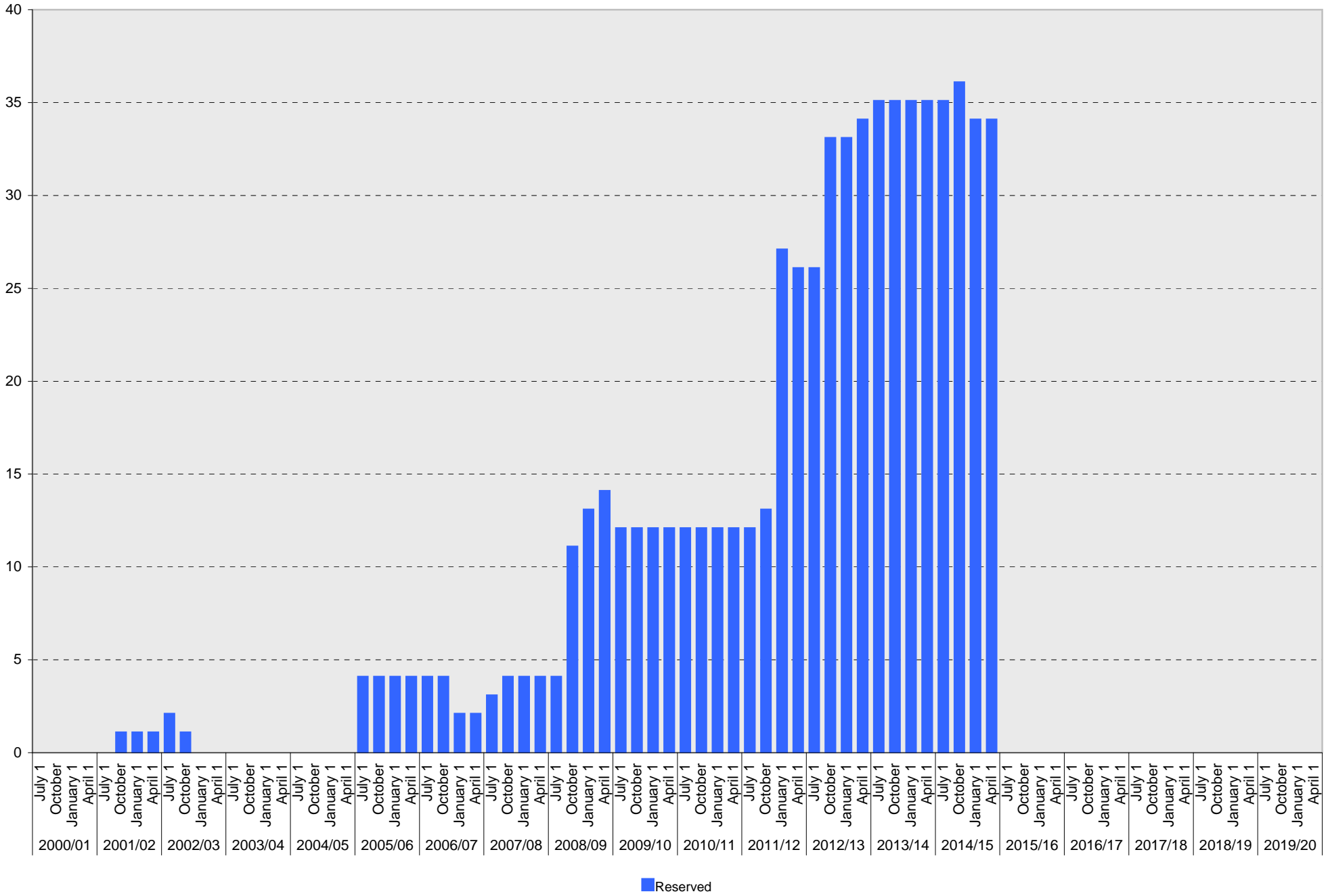
University of California, San Diego Parking Space Inventory

East Campus: Visitor Parking Spaces



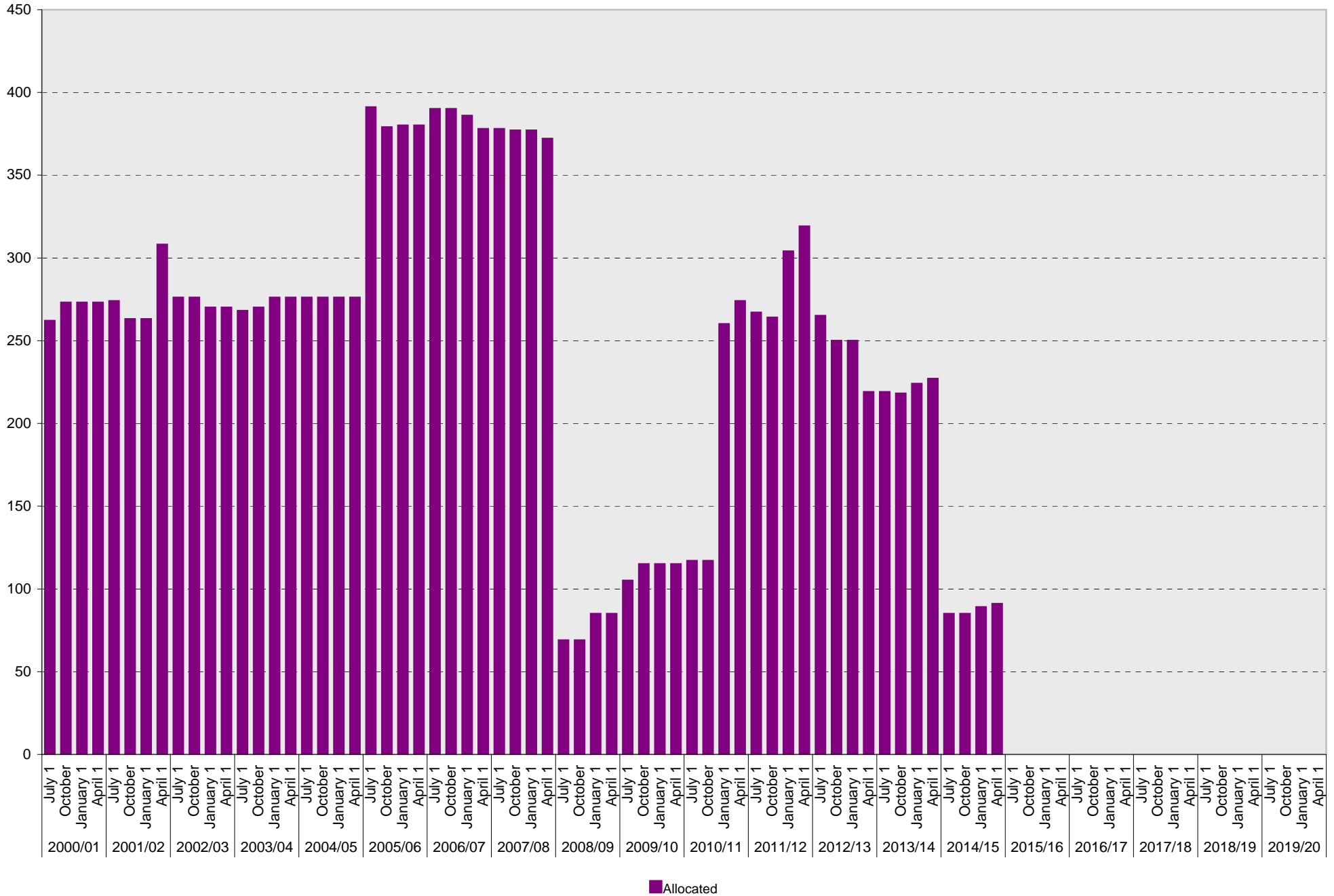
University of California, San Diego Parking Space Inventory

East Campus: Reserved Parking Spaces



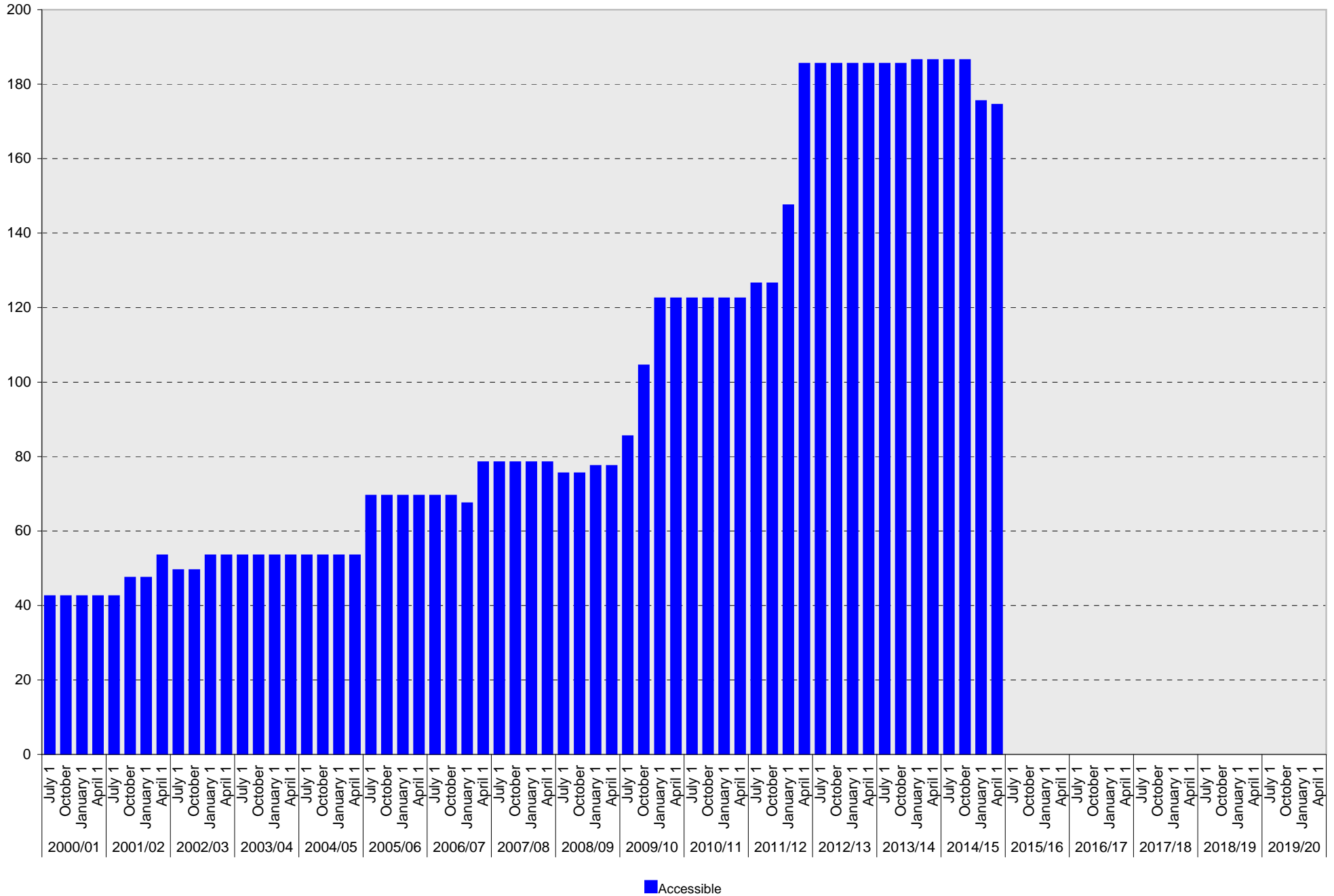
University of California, San Diego Parking Space Inventory

East Campus: Allocated Parking Spaces



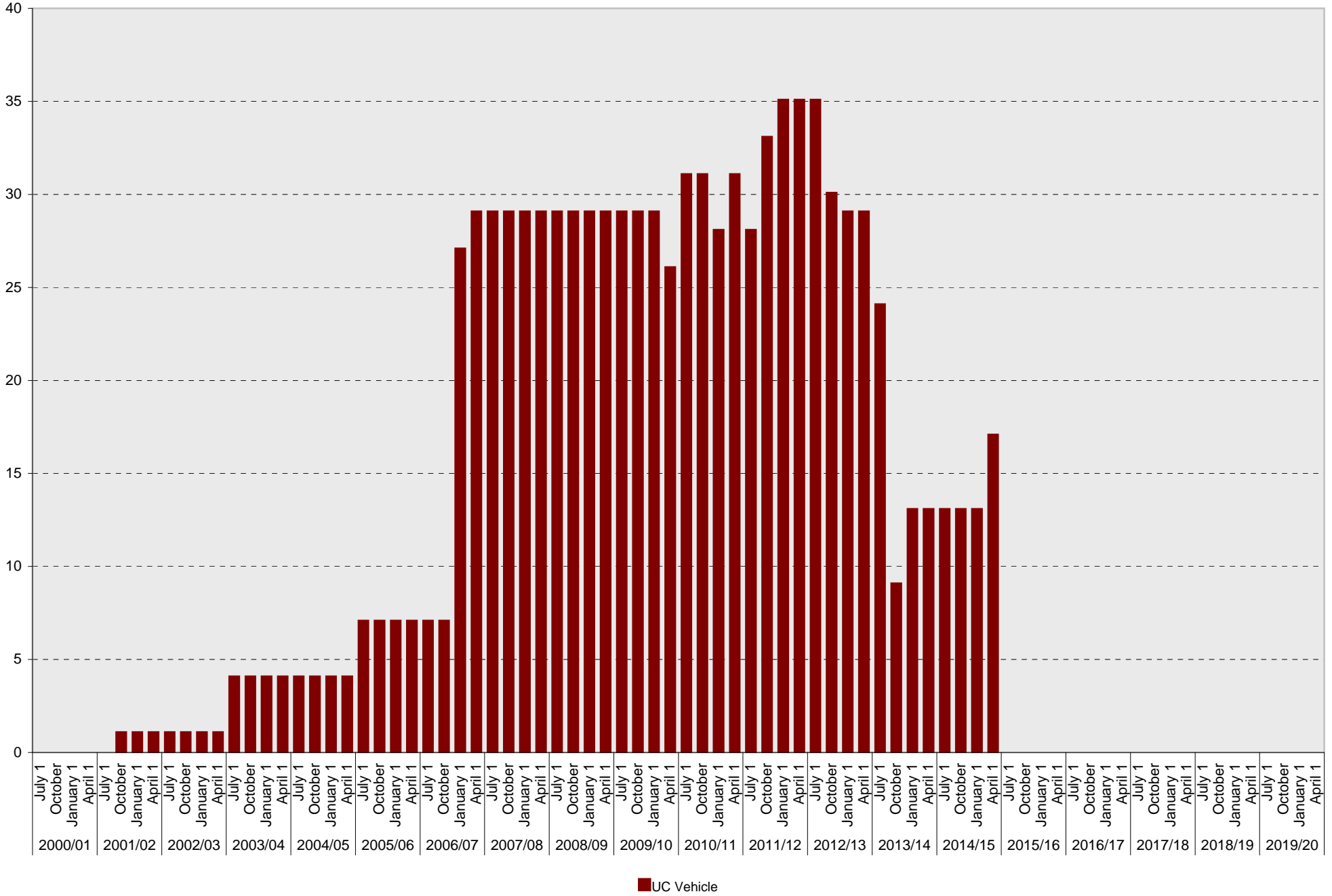
University of California, San Diego Parking Space Inventory

East Campus: Accessible Parking Spaces



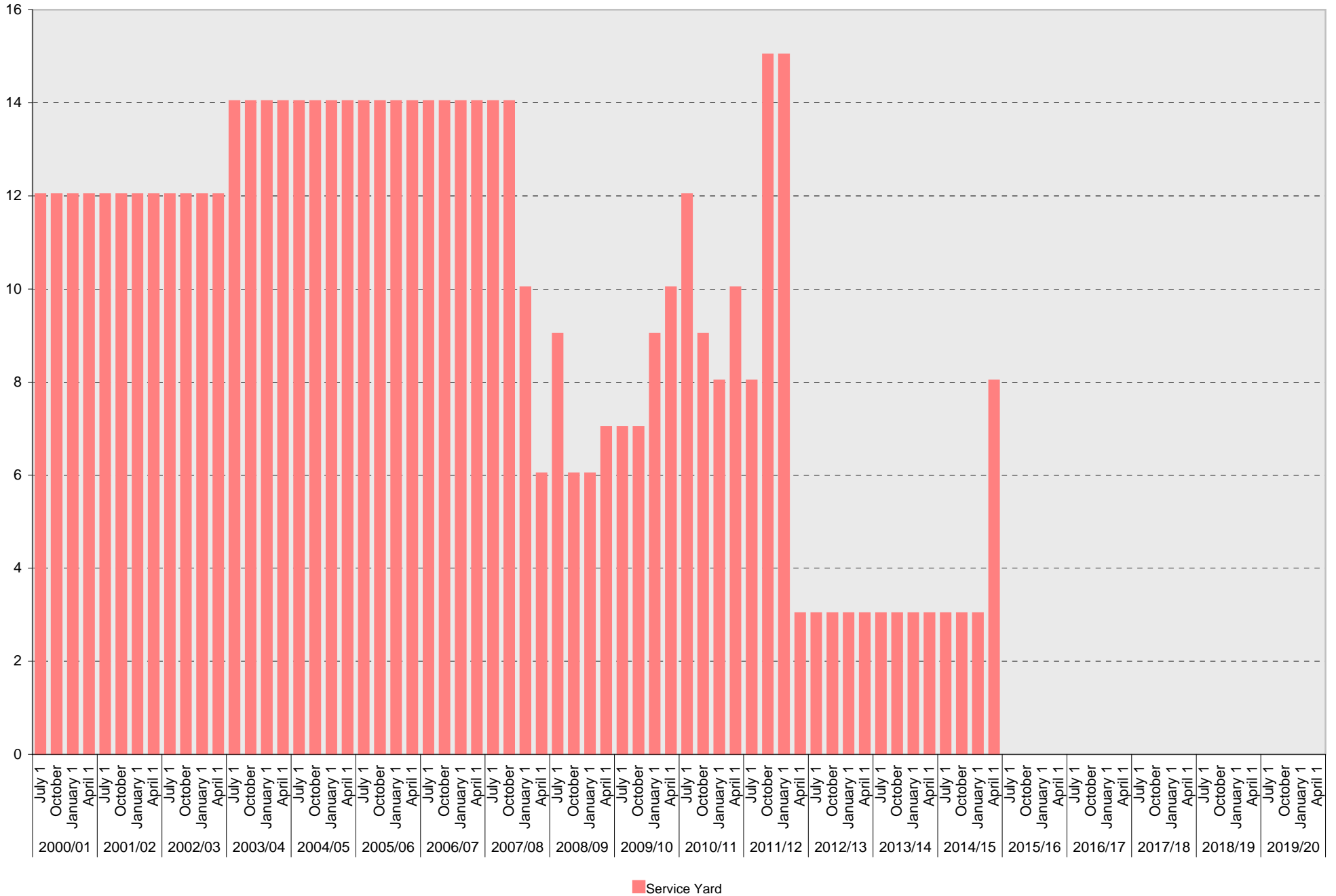
University of California, San Diego Parking Space Inventory

East Campus: UC Vehicle Parking Spaces

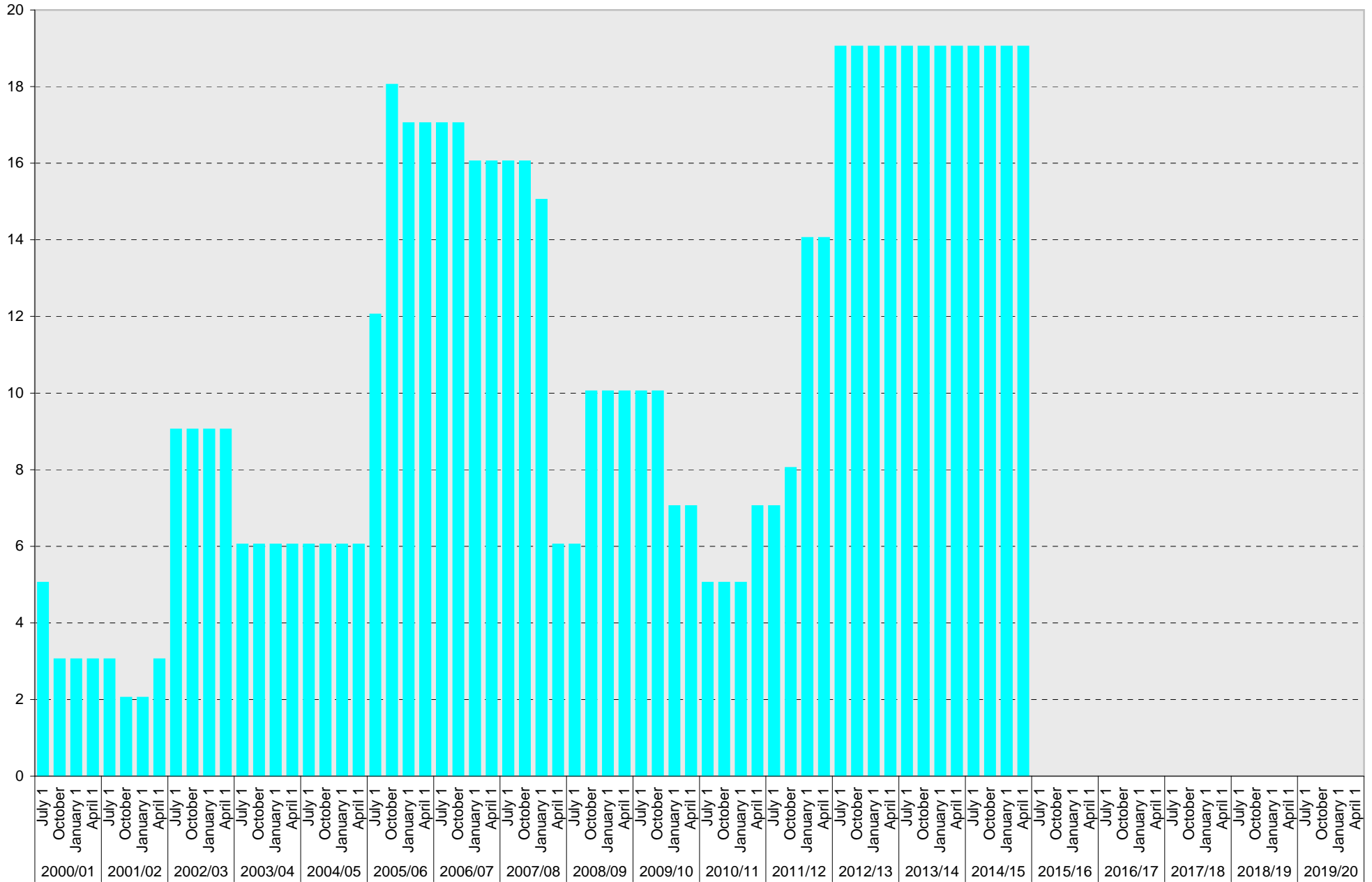


■ UC Vehicle

University of California, San Diego Parking Space Inventory East Campus: Service Yard Parking Spaces

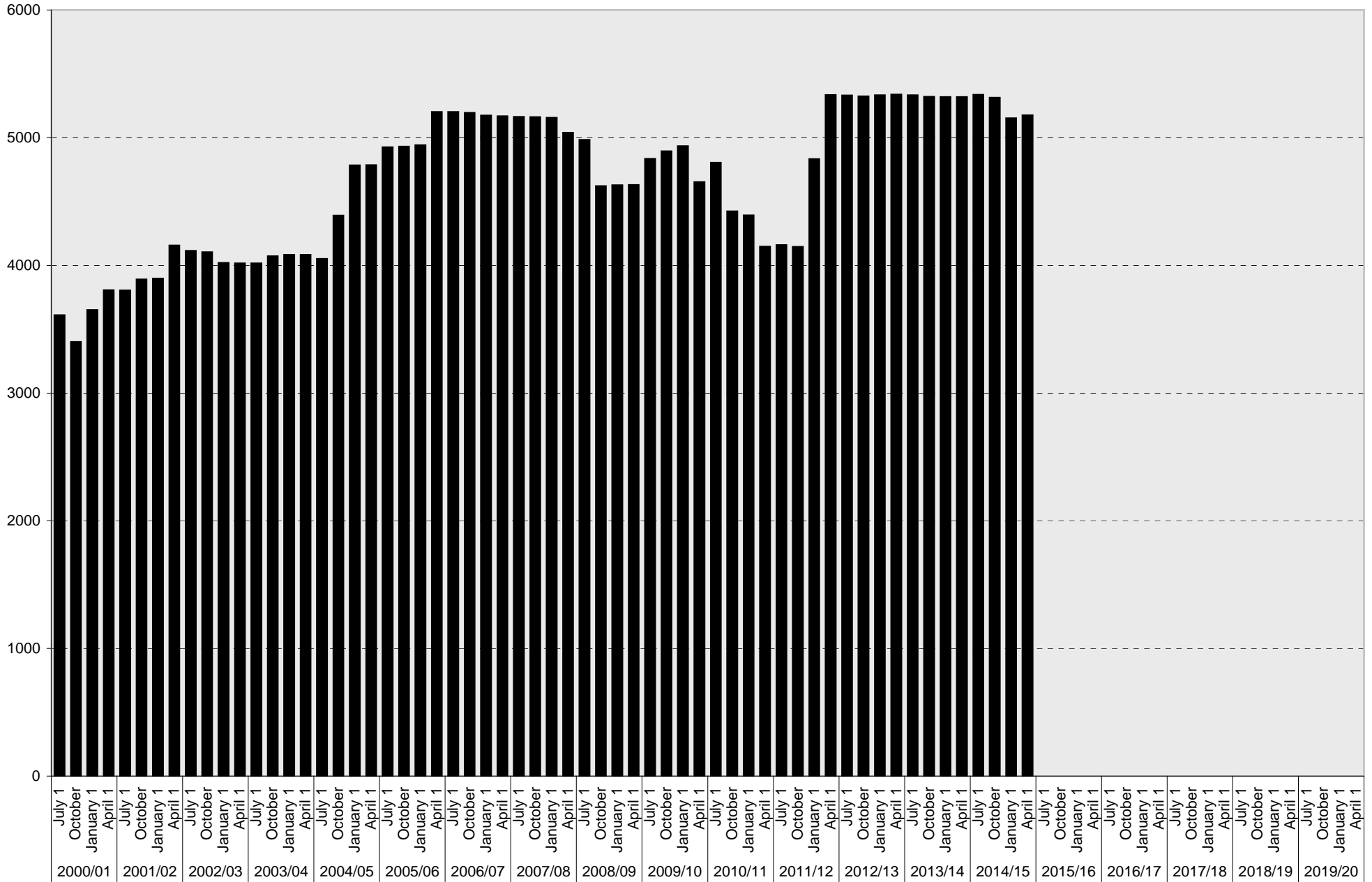


University of California, San Diego Parking Space Inventory East Campus: Loading Parking Spaces



■ Loading

University of California, San Diego Parking Space Inventory East Campus: Total Parking Spaces



■ Total

University of California, San Diego Parking Space Inventory
East Campus

Date		Parking Spaces										Motorcycle Parking Sections	
		A	B	S	Visitor	Reserved	Allocated	Accessible	UC Vehicle	Service Yard	Loading		Total
2000/01	July 1	122	566	2588			261	42		12	5	3596	1
	October 1	111	431	2514			272	42		12	3	3385	1
	January 1	111	492	2704			272	42		12	3	3636	1
	April 1	111	628	2724			272	42		12	3	3792	1
2001/02	July 1	111	628	2721			273	42		12	3	3790	2
	October 1	128	789	2626	8	1	262	47	1	12	2	3876	2
	January 1	128	795	2626	8	1	262	47	1	12	2	3882	2
	April 1	133	889	2734	8	1	307	53	1	12	3	4141	3
2002/03	July 1	128	879	2736	8	2	275	49	1	12	9	4099	3
	October 1	128	879	2727	8	1	275	49	1	12	9	4089	2
	January 1	128	795	2729	8		269	53	1	12	9	4004	2
	April 1	128	795	2727	8		269	53	1	12	9	4002	2
2003/04	July 1	128	795	2727	8		267	53	4	14	6	4002	2
	October 1	128	739	2837	8		269	53	4	14	6	4058	2
	January 1	128	733	2846	8		275	53	4	14	6	4067	2
	April 1	128	733	2846	8		275	53	4	14	6	4067	2
2004/05	July 1	128	733	2815	8		275	53	4	14	6	4036	2
	October 1	128	733	3155	8		275	53	4	14	6	4376	2
	January 1	128	875	3405	8		275	53	4	14	6	4768	2
	April 1	242	875	3294	8		275	53	4	14	6	4771	2
2005/06	July 1	216	893	3297	8	4	390	69	7	14	12	4910	2
	October 1	228	893	3296	8	4	378	69	7	14	18	4915	2
	January 1	241	892	3296	8	4	379	69	7	14	17	4927	2
	April 1	241	1156	3288	12	4	379	69	7	14	17	5187	2
2006/07	July 1	232	1156	3287	12	4	389	69	7	14	17	5187	2
	October 1	232	1156	3279	12	4	389	69	7	14	17	5179	2
	January 1	226	1159	3252	10	2	385	67	27	14	16	5158	2
	April 1	227	1158	3246	6	2	377	78	29	14	16	5153	2
2007/08	July 1	226	1153	3246	6	3	377	78	29	14	16	5148	2
	October 1	226	1151	3246	6	4	376	78	29	14	16	5146	2
	January 1	226	1151	3247	6	4	376	78	29	10	15	5142	2
	April 1	229	1057	3245		4	371	78	29	6	6	5025	3
2008/09	July 1	216	1019	3237	306	4	68	75	29	9	6	4969	3
	October 1	217	889	2995	306	11	68	75	29	6	10	4606	3
	January 1	215	1009	2865	306	13	84	77	29	6	10	4614	3
	April 1	213	1010	2865	306	14	84	77	29	7	10	4615	3
2009/10	July 1	211	991	3045	325	12	104	85	29	7	10	4819	3
	October 1	215	995	3045	348	12	114	104	29	7	10	4879	3
	January 1	215	995	3045	371	12	114	122	29	9	7	4919	3
	April 1	215	995	2768	369	12	114	122	26	10	7	4638	3

