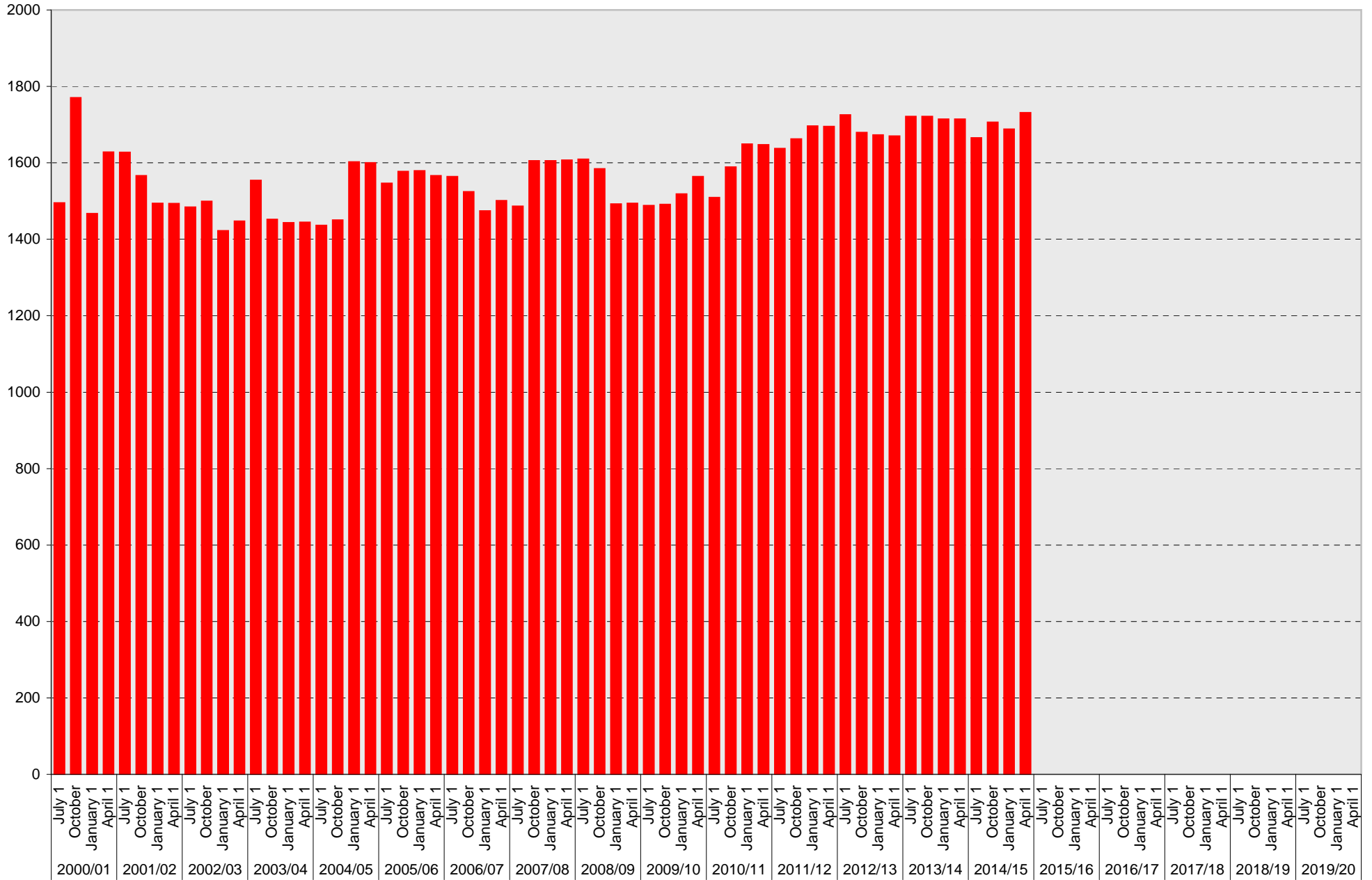


# University of California, San Diego Parking Space Inventory West Campus: A Parking Spaces

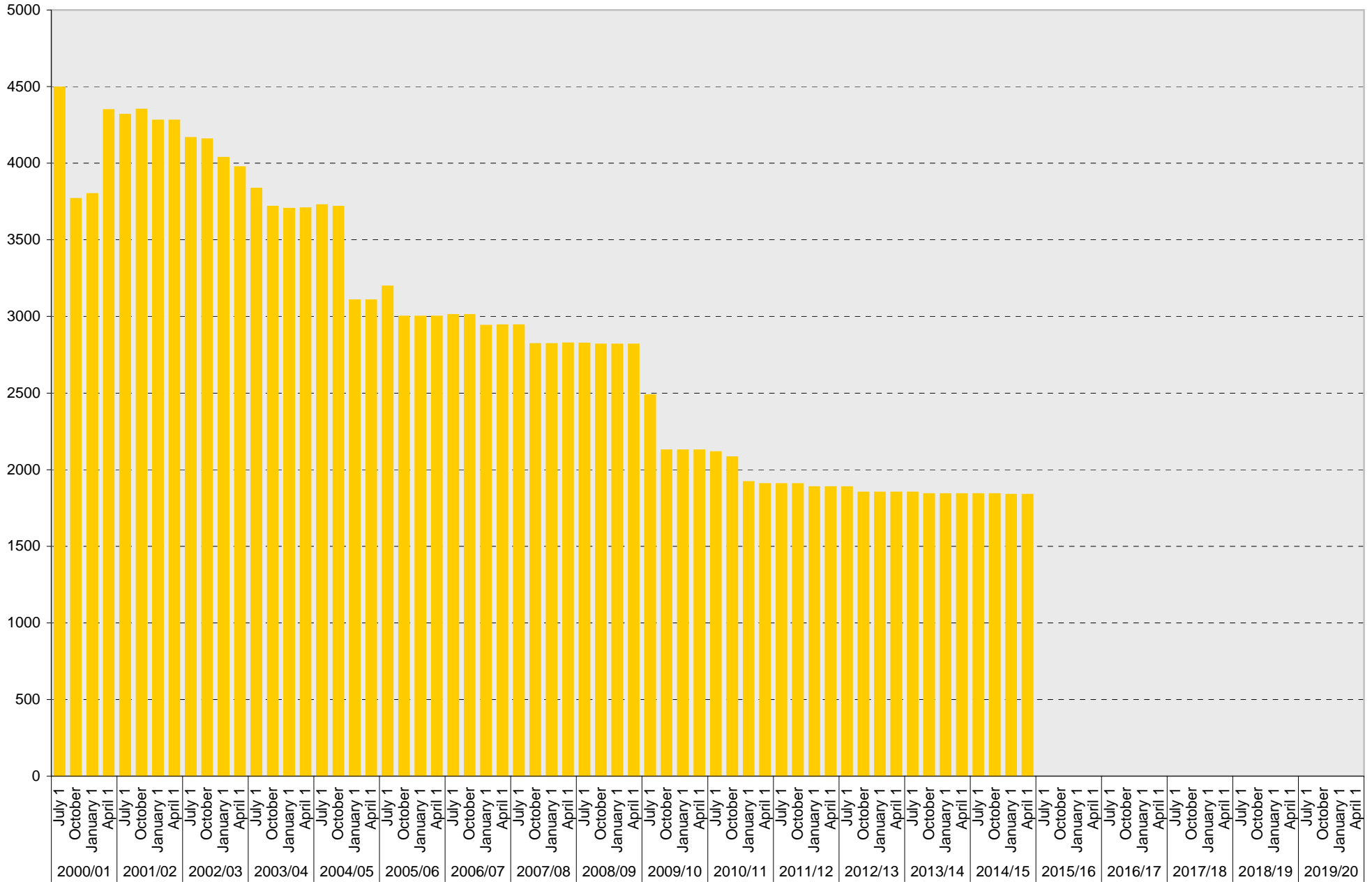


■ A



# University of California, San Diego Parking Space Inventory

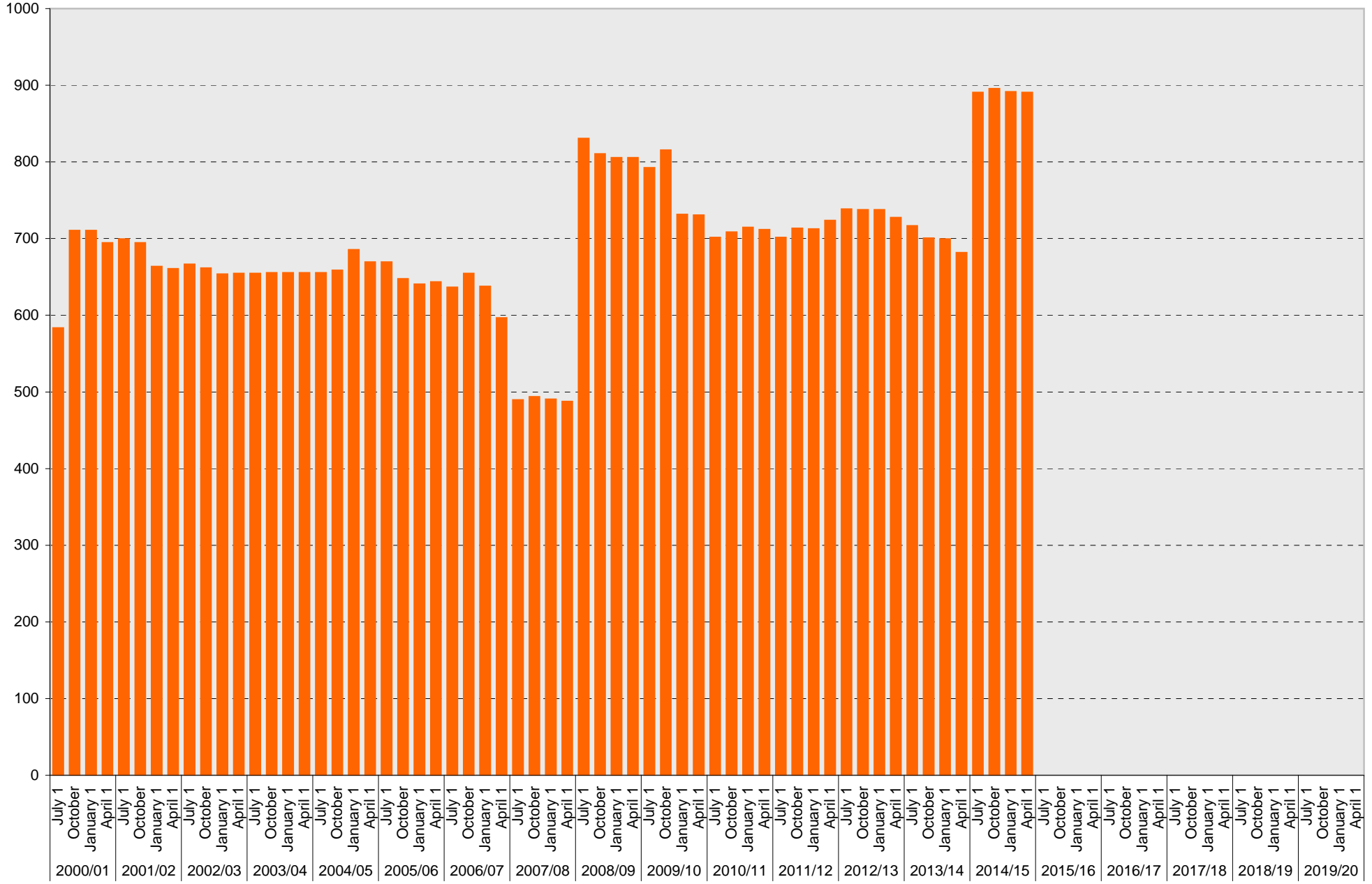
## West Campus: S Parking Spaces



■ s

# University of California, San Diego Parking Space Inventory

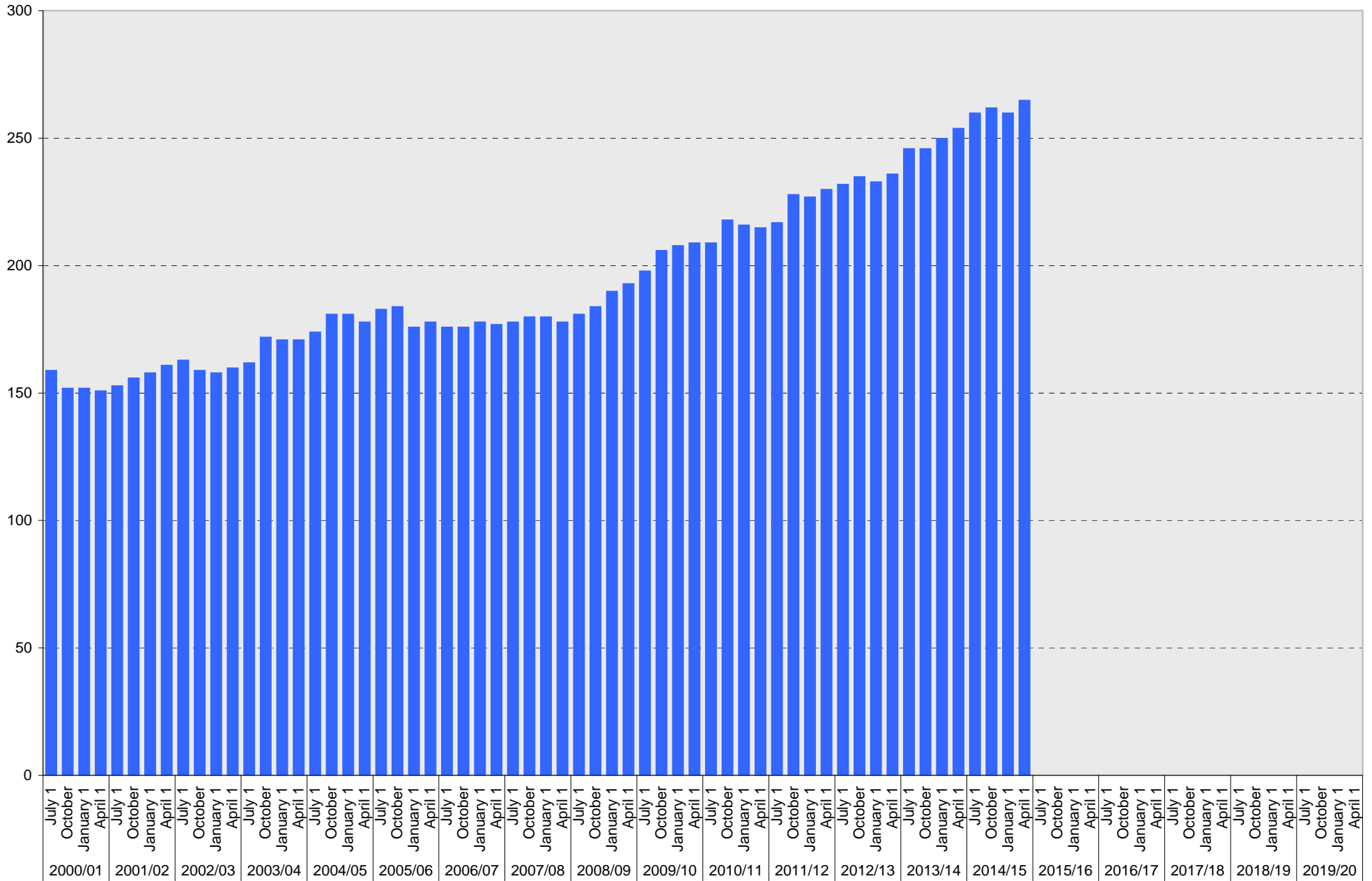
## West Campus: Visitor Parking Spaces



Visitor

# University of California, San Diego Parking Space Inventory

## West Campus: Reserved Parking Spaces



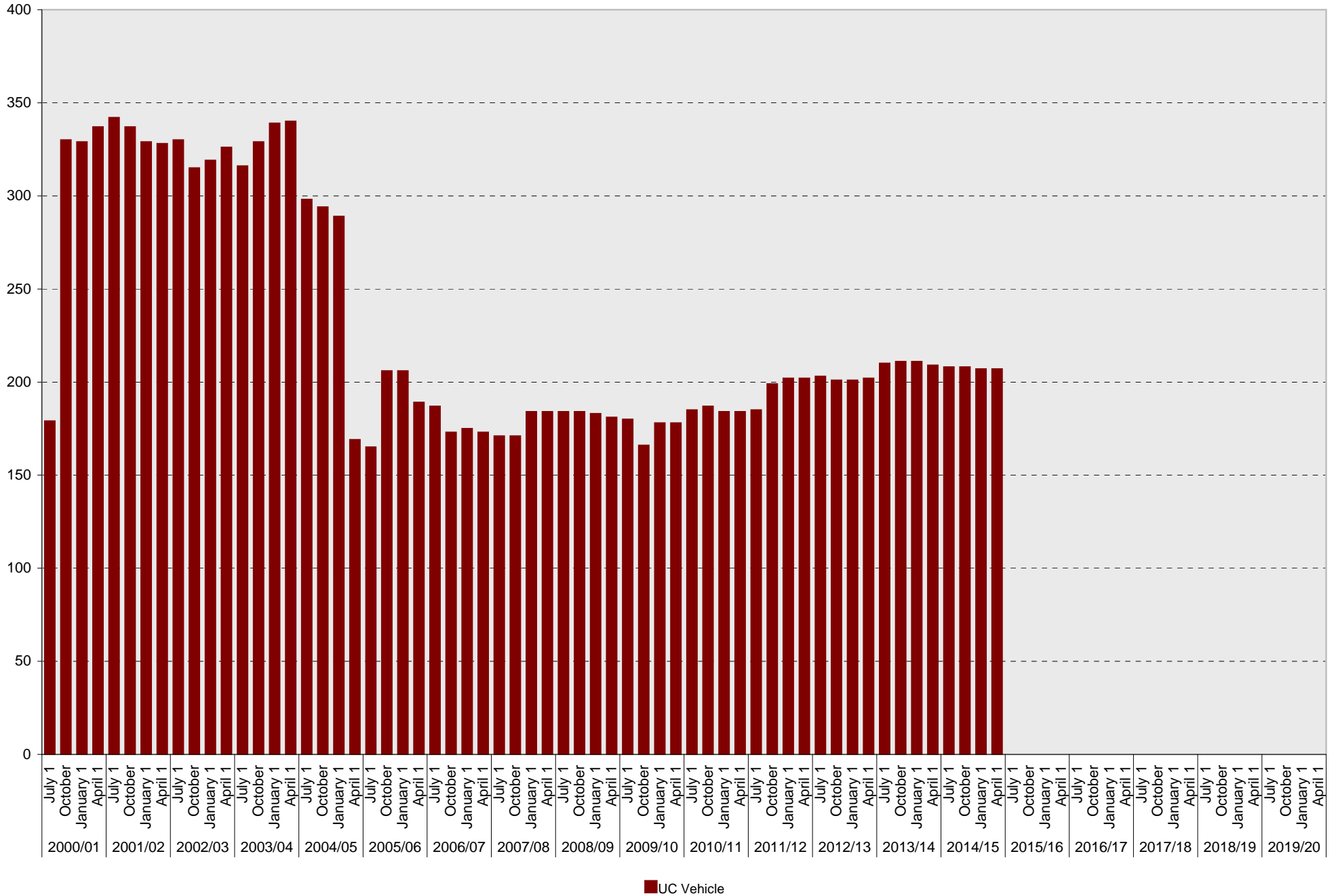
■ Reserved





# University of California, San Diego Parking Space Inventory

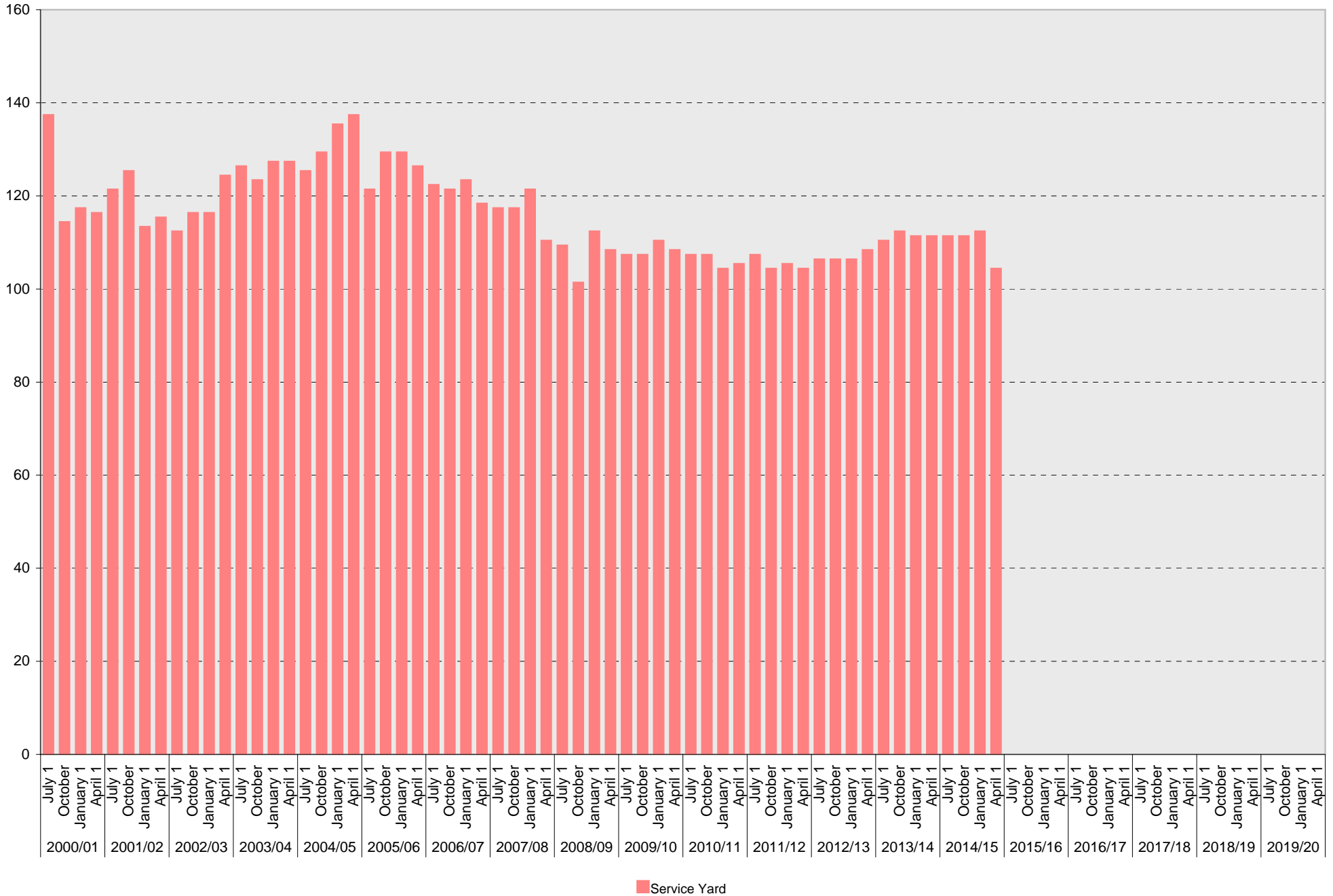
## West Campus: UC Vehicle Parking Spaces





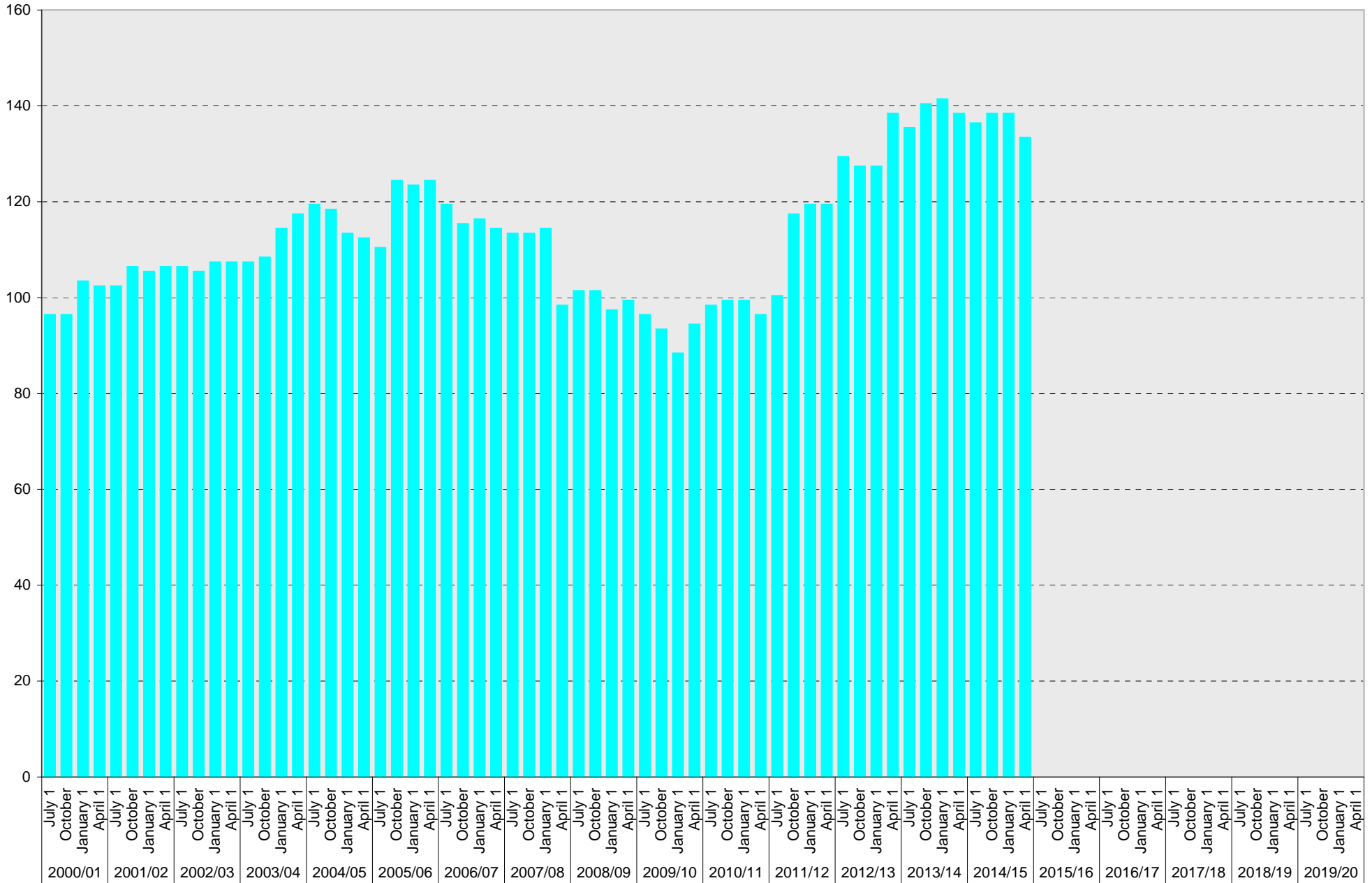
# University of California, San Diego Parking Space Inventory

## West Campus: Service Yard Parking Spaces



# University of California, San Diego Parking Space Inventory

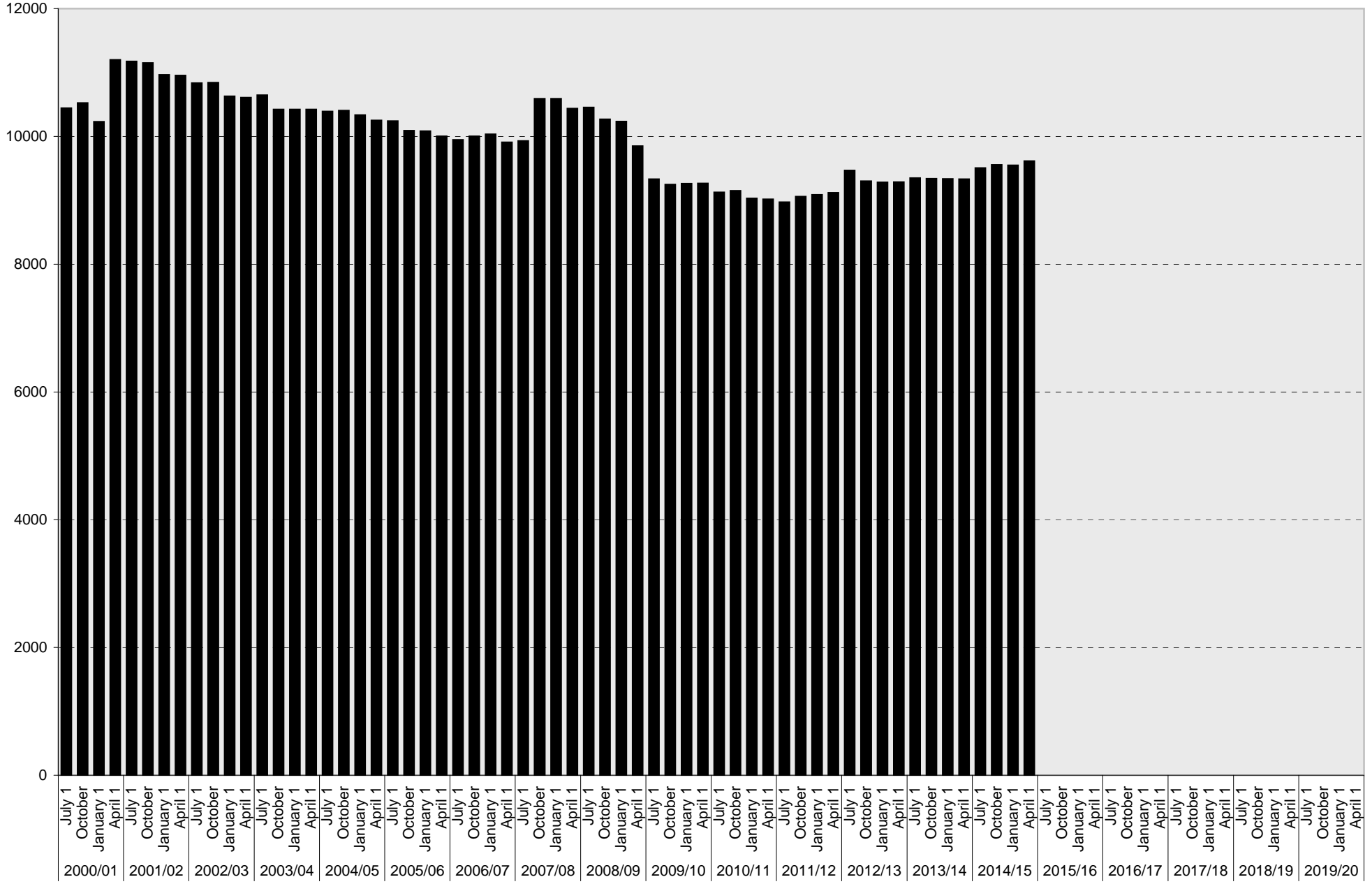
## West Campus: Loading Parking Spaces



■ Loading

# University of California, San Diego Parking Space Inventory

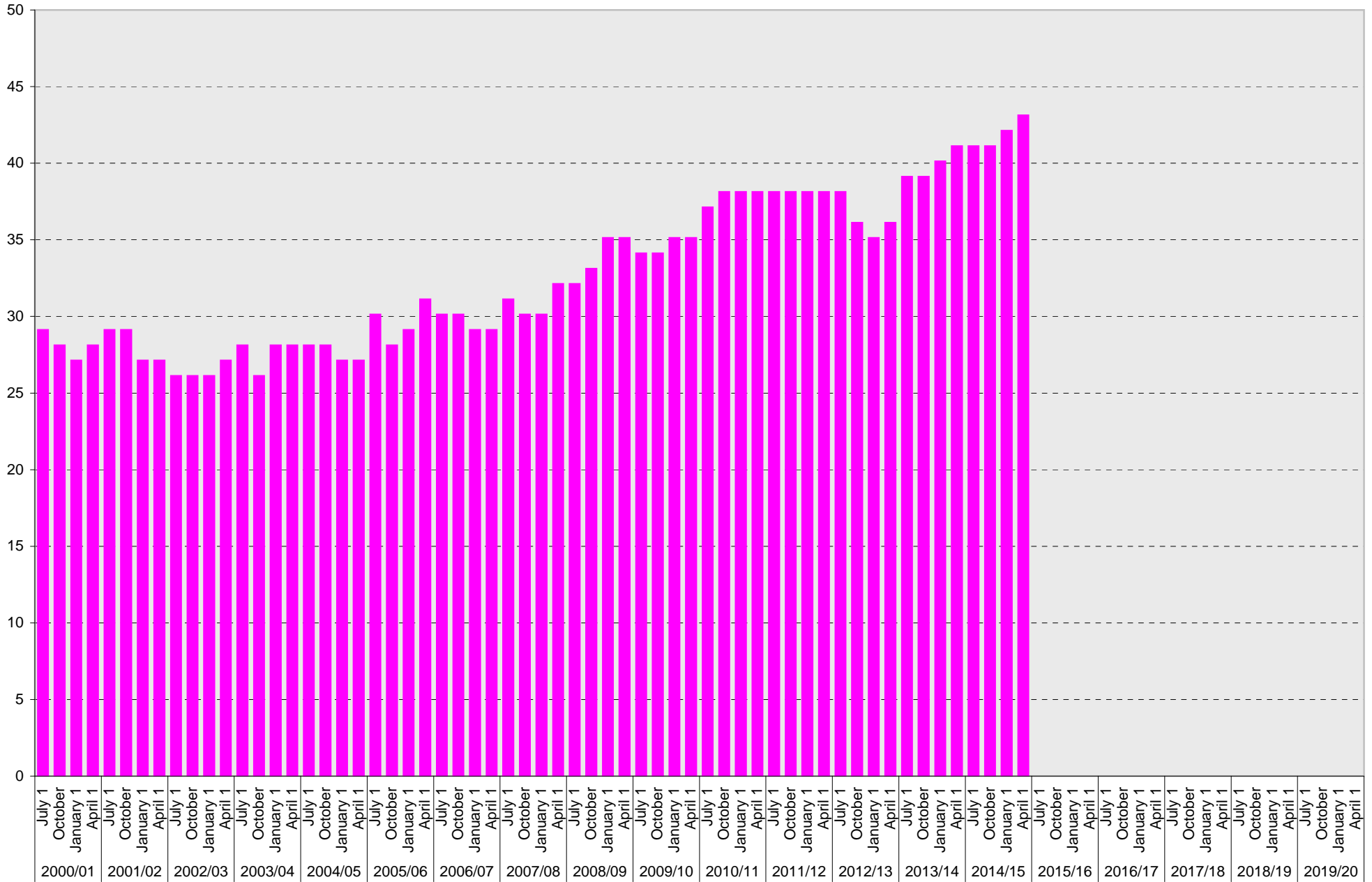
## West Campus: Total Parking Spaces



■ Total

# University of California, San Diego Parking Space Inventory

## West Campus: Motorcycle Parking Sections



Motorcycle

University of California, San Diego Parking Space Inventory  
West Campus

Date		Parking Spaces											Motorcycle Parking Sections
		A	B	S	Visitor	Reserved	Allocated	Accessible	UC Vehicle	Service Yard	Loading	Total	
2000/01	July 1	1490	2734	4483	581	158	385	169	178	137	96	10411	29
	October 1	1765	2942	3755	708	151	449	185	329	114	96	10494	28
	January 1	1462	2918	3788	708	151	434	190	328	117	103	10199	27
	April 1	1623	3171	4336	692	150	428	212	336	116	102	11166	28
2001/02	July 1	1622	3170	4305	697	152	419	213	341	121	102	11142	29
	October 1	1561	3155	4339	692	155	434	214	336	125	106	11117	29
	January 1	1489	3170	4267	661	157	435	210	328	113	105	10935	27
	April 1	1488	3144	4267	658	160	435	222	327	115	106	10922	27
2002/03	July 1	1479	3142	4154	664	162	435	221	329	112	106	10804	26
	October 1	1494	3140	4144	659	158	457	225	314	116	105	10812	26
	January 1	1417	3119	4024	651	157	456	231	318	116	107	10596	26
	April 1	1442	3135	3963	652	159	440	231	325	124	107	10578	27
2003/04	July 1	1549	3205	3823	652	161	446	231	315	126	107	10615	28
	October 1	1447	3170	3705	653	171	448	239	328	123	108	10392	26
	January 1	1438	3170	3691	653	170	448	242	338	127	114	10391	28
	April 1	1439	3162	3694	653	170	448	242	339	127	117	10391	28
2004/05	July 1	1431	3166	3714	653	173	439	241	297	125	119	10358	28
	October 1	1445	3158	3705	656	180	442	249	293	129	118	10375	28
	January 1	1597	3519	3094	683	180	443	251	288	135	113	10303	27
	April 1	1595	3514	3094	667	177	509	247	168	137	112	10220	27
2005/06	July 1	1541	3457	3184	667	182	536	246	164	121	110	10208	30
	October 1	1572	3453	2988	645	183	516	245	205	129	124	10060	28
	January 1	1574	3459	2988	638	175	517	245	205	129	123	10053	29
	April 1	1561	3458	2988	641	177	459	251	188	126	124	9973	31
2006/07	July 1	1559	3451	2997	634	175	430	242	186	122	119	9915	30
	October 1	1519	3506	2997	652	175	472	242	172	121	115	9971	30
	January 1	1469	3618	2927	635	177	518	246	174	123	116	10003	29
	April 1	1496	3523	2931	594	176	508	246	172	118	114	9878	29
2007/08	July 1	1481	3563	2931	487	177	611	249	170	117	113	9899	31
	October 1	1600	4043	2808	491	179	763	275	170	117	113	10559	30
	January 1	1600	4028	2808	488	179	764	275	183	121	114	10560	30
	April 1	1602	4011	2813	485	177	651	275	183	110	98	10405	32
2008/09	July 1	1604	4011	2811	828	180	320	275	183	109	101	10422	32
	October 1	1579	3889	2806	808	183	317	269	183	101	101	10236	33
	January 1	1487	3927	2806	803	189	321	279	182	112	97	10203	35
	April 1	1489	3541	2806	803	192	321	279	180	108	99	9818	35
2009/10	July 1	1483	3382	2474	790	197	318	274	179	107	96	9300	34
	October 1	1486	3653	2115	813	205	307	273	165	107	93	9217	34
	January 1	1513	3693	2115	729	207	320	277	177	110	88	9229	35
	April 1	1559	3646	2115	728	208	320	278	177	108	94	9233	35

