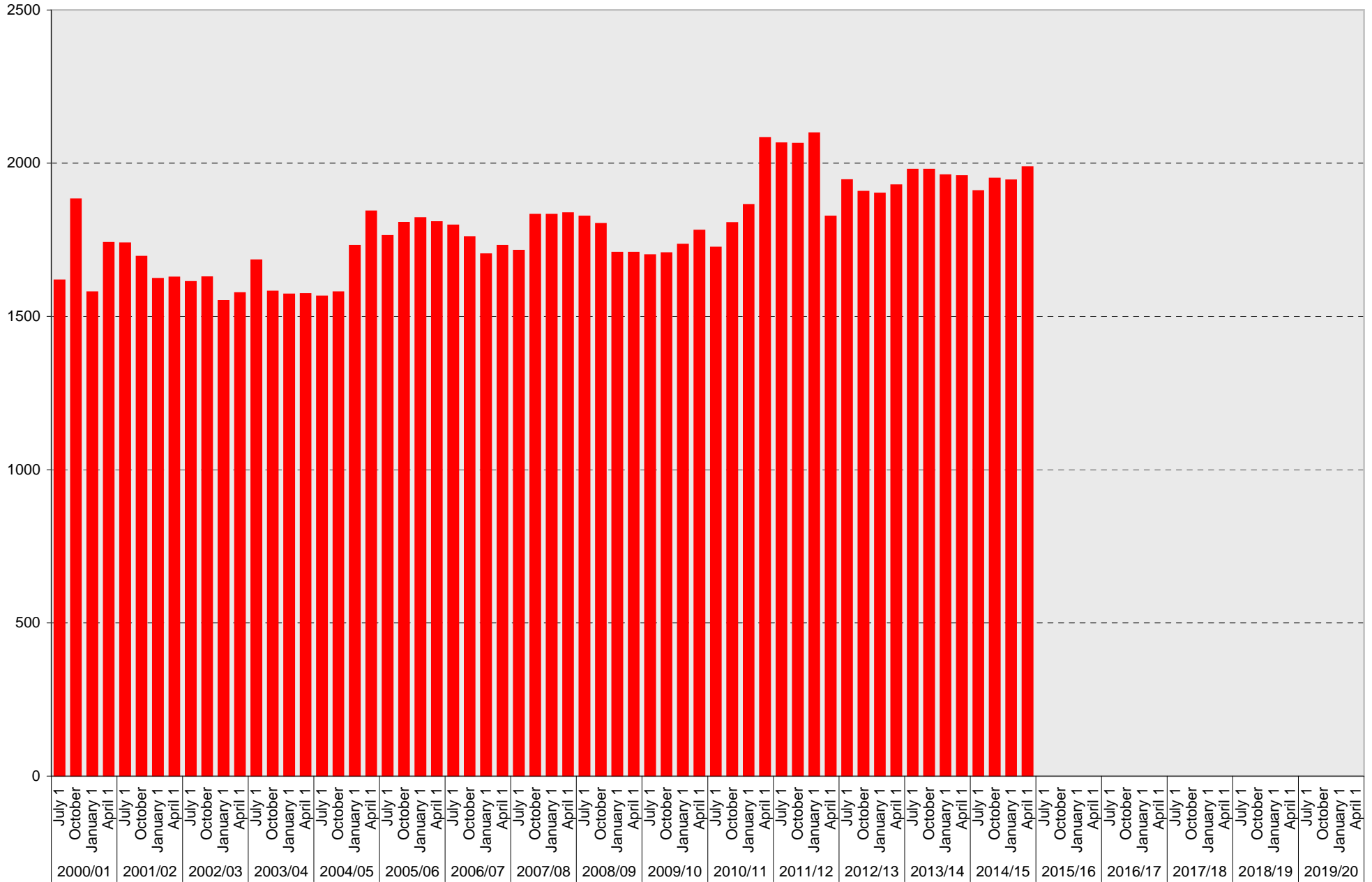


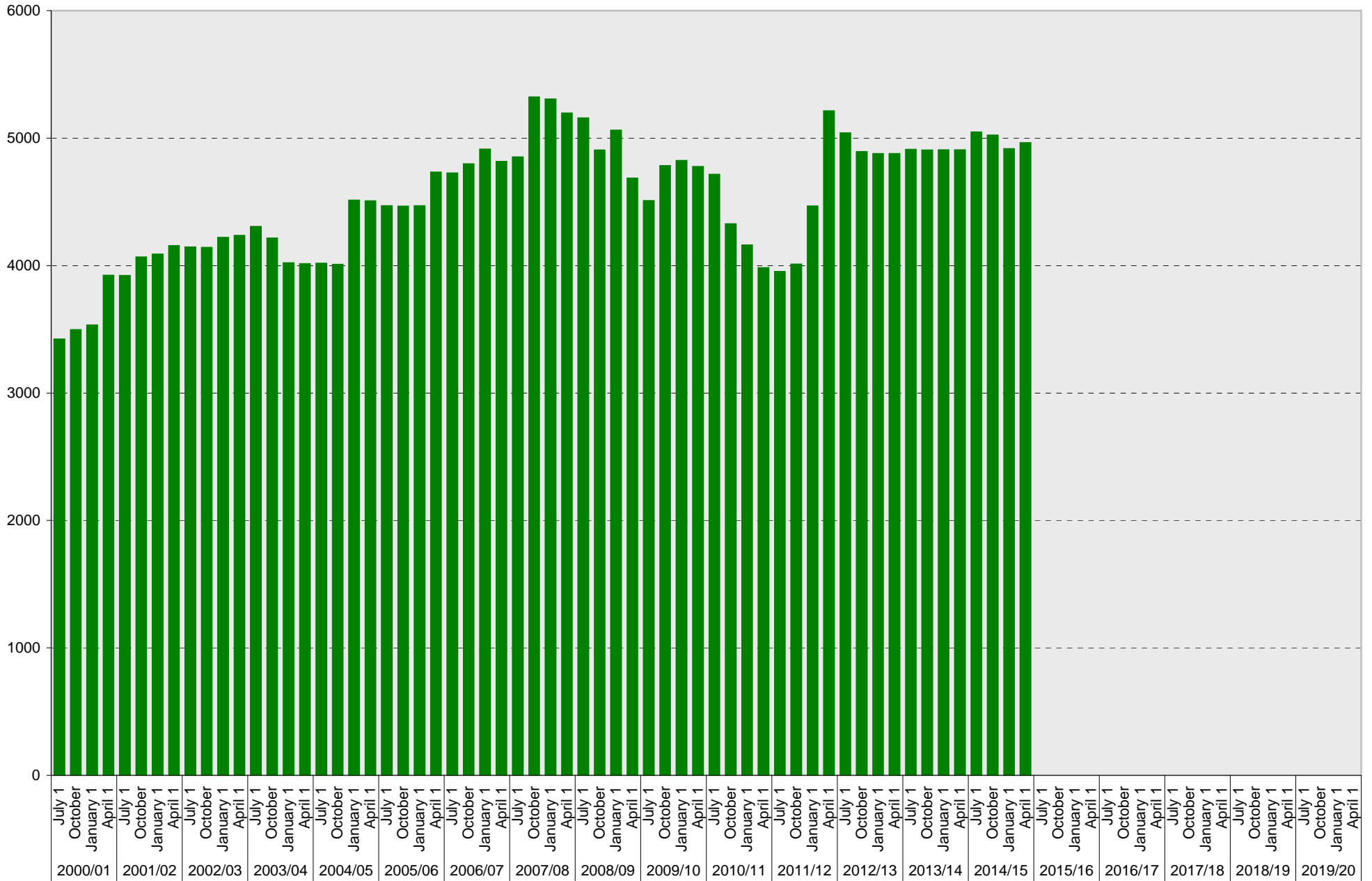
University of California, San Diego Parking Space Inventory La Jolla Campus: A Parking Spaces



■ A

University of California, San Diego Parking Space Inventory

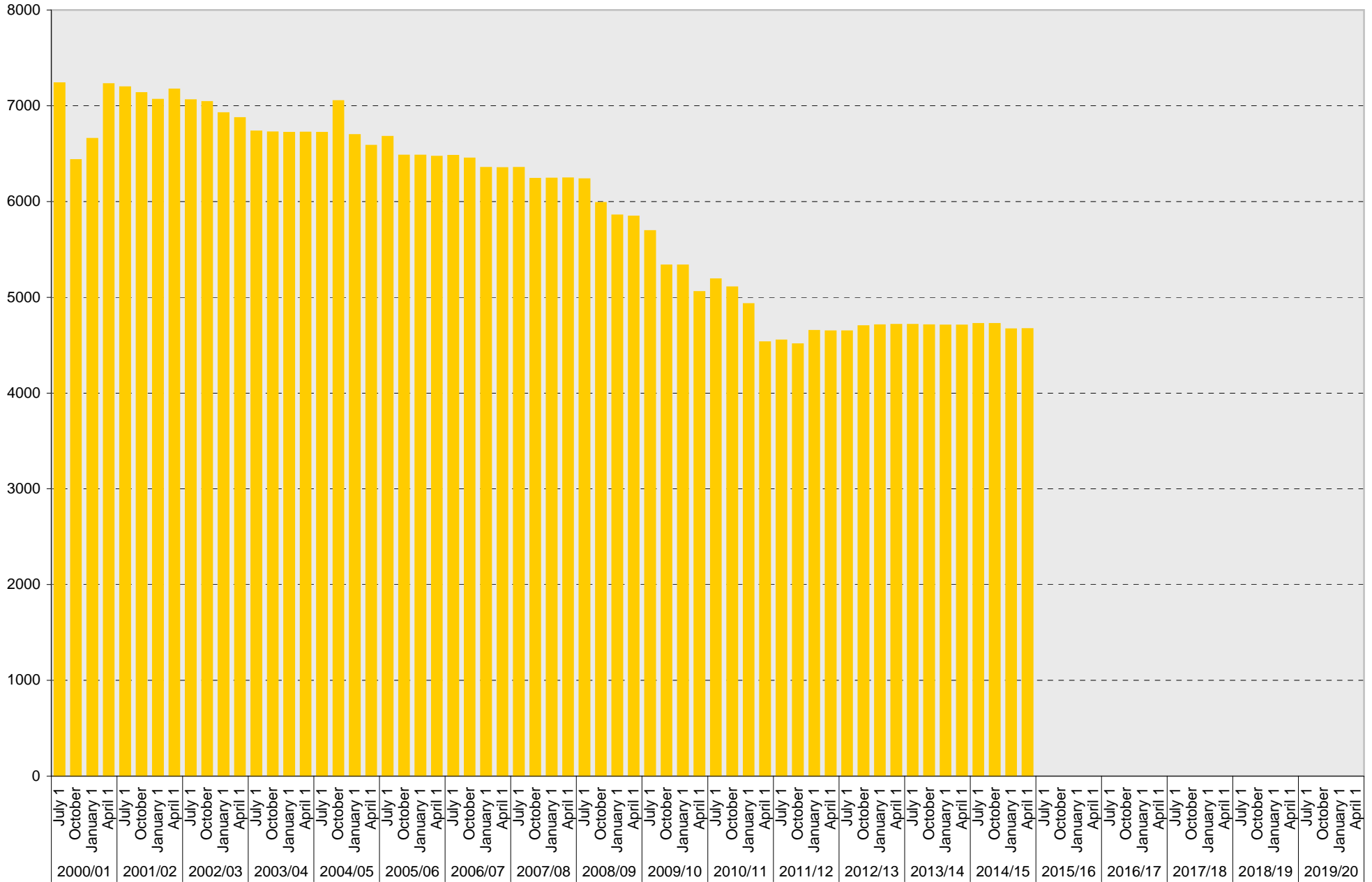
La Jolla Campus: B Parking Spaces



■ B

University of California, San Diego Parking Space Inventory

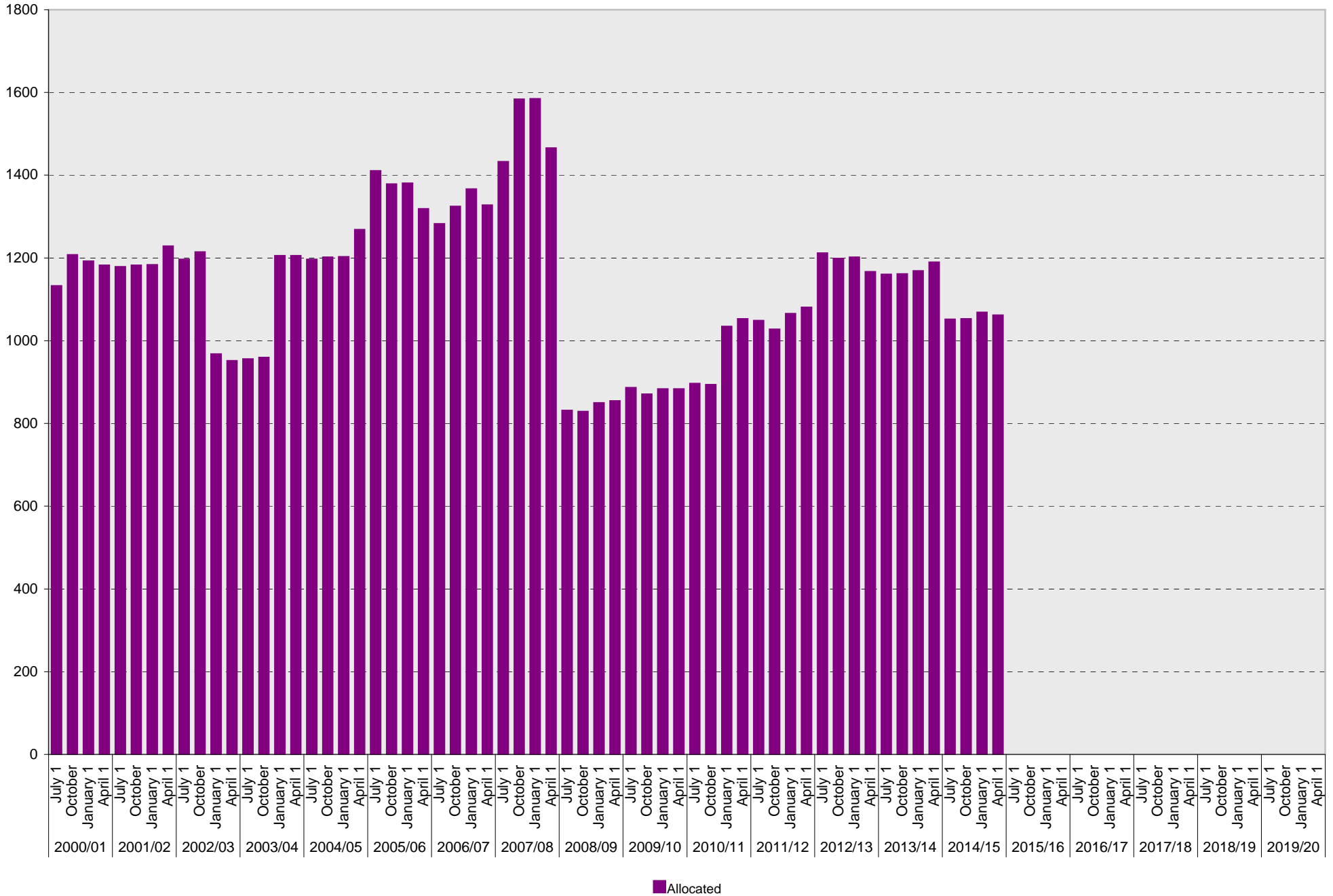
La Jolla Campus: S Parking Spaces



■ S

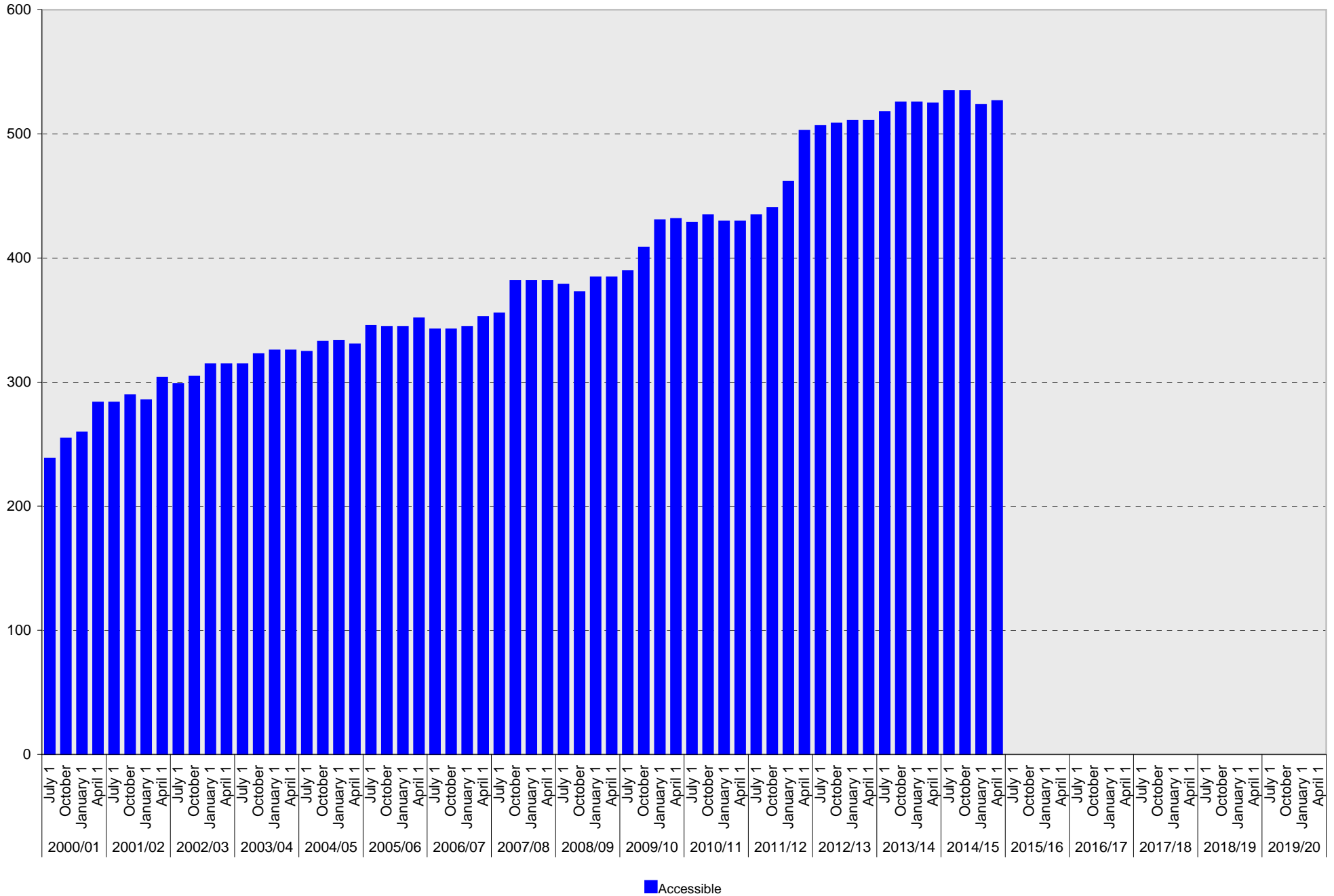
University of California, San Diego Parking Space Inventory

La Jolla Campus: Allocated Parking Spaces



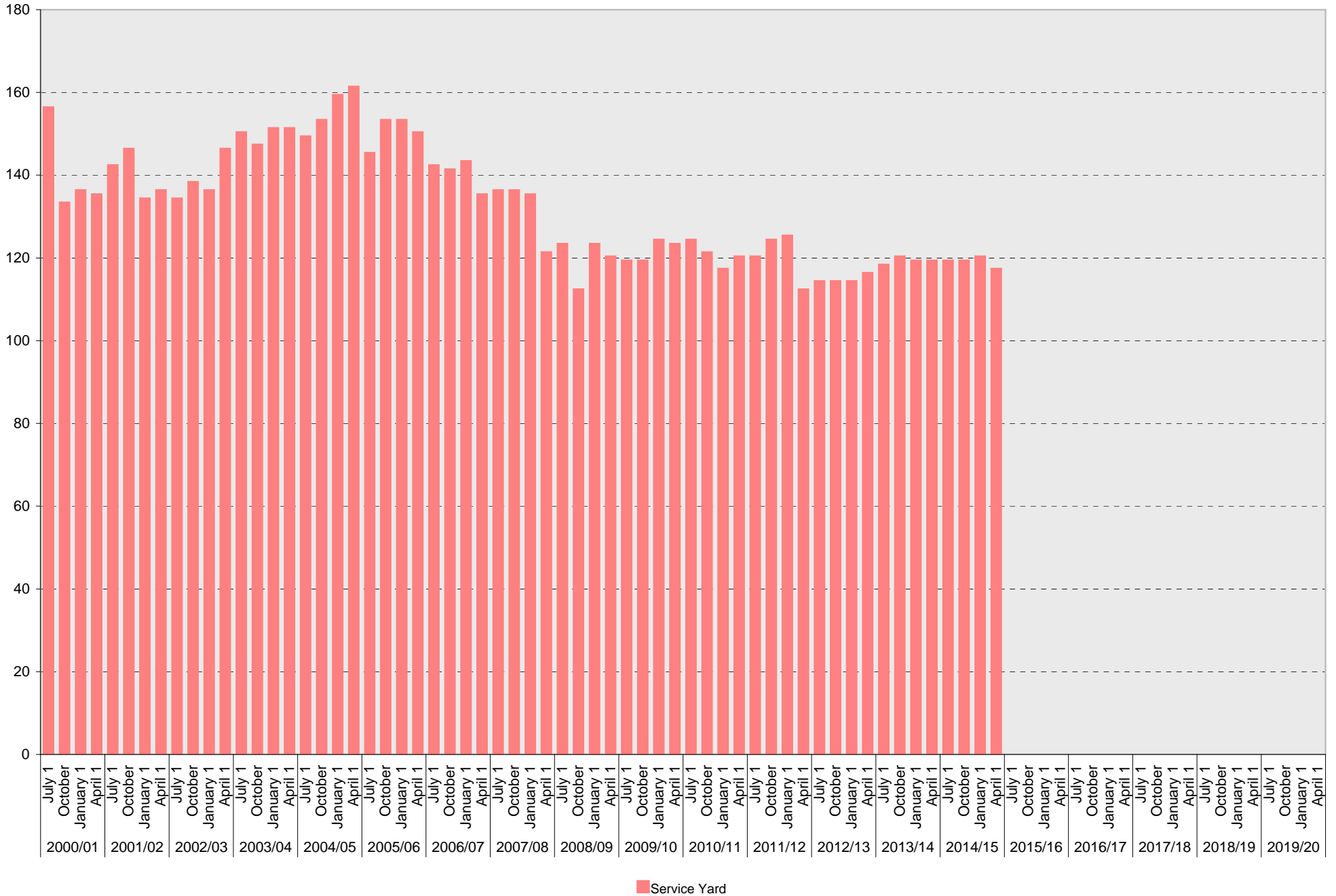
University of California, San Diego Parking Space Inventory

La Jolla Campus: Accessible Parking Spaces



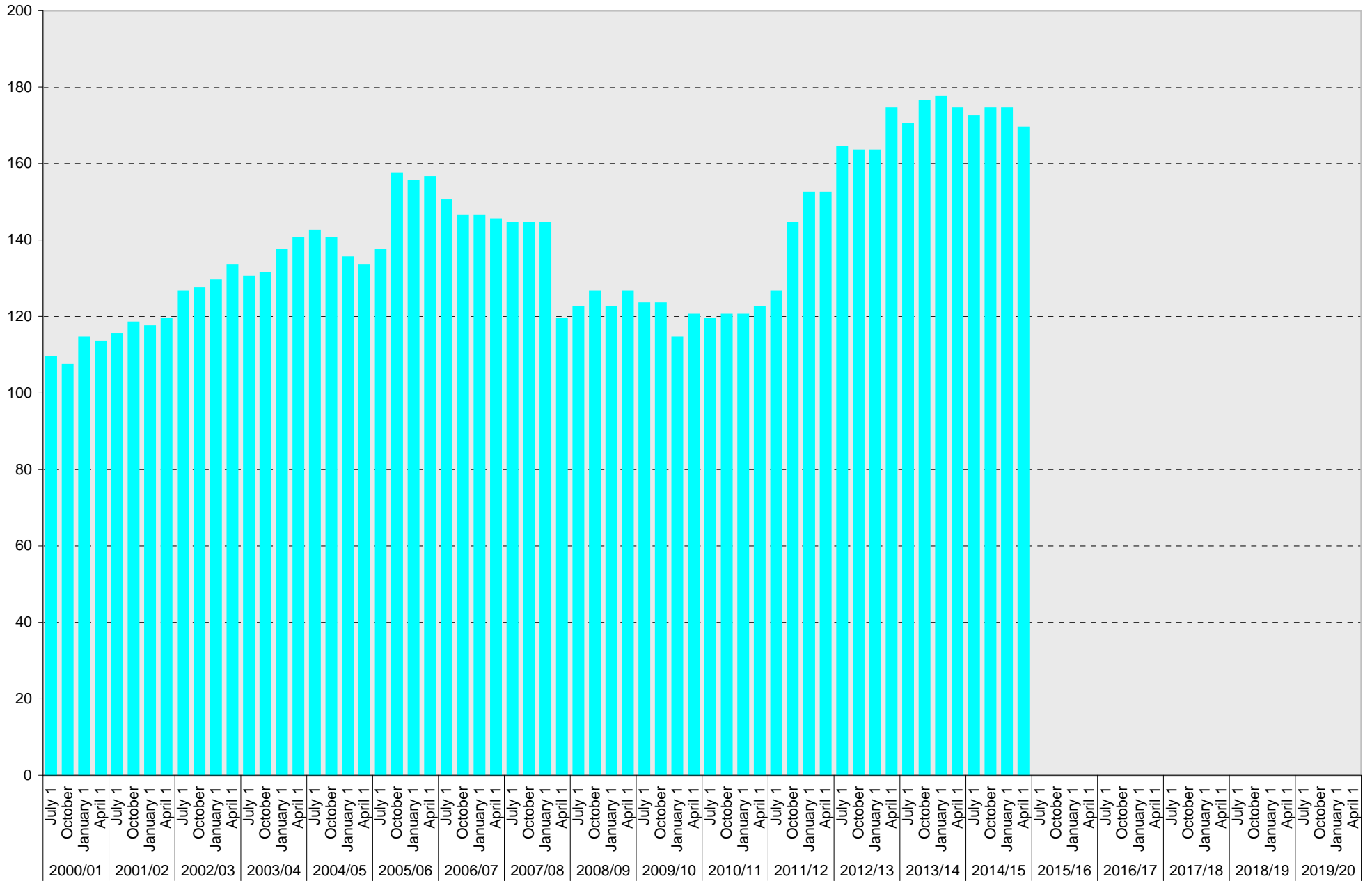
University of California, San Diego Parking Space Inventory

La Jolla Campus: Service Yard Parking Spaces



University of California, San Diego Parking Space Inventory

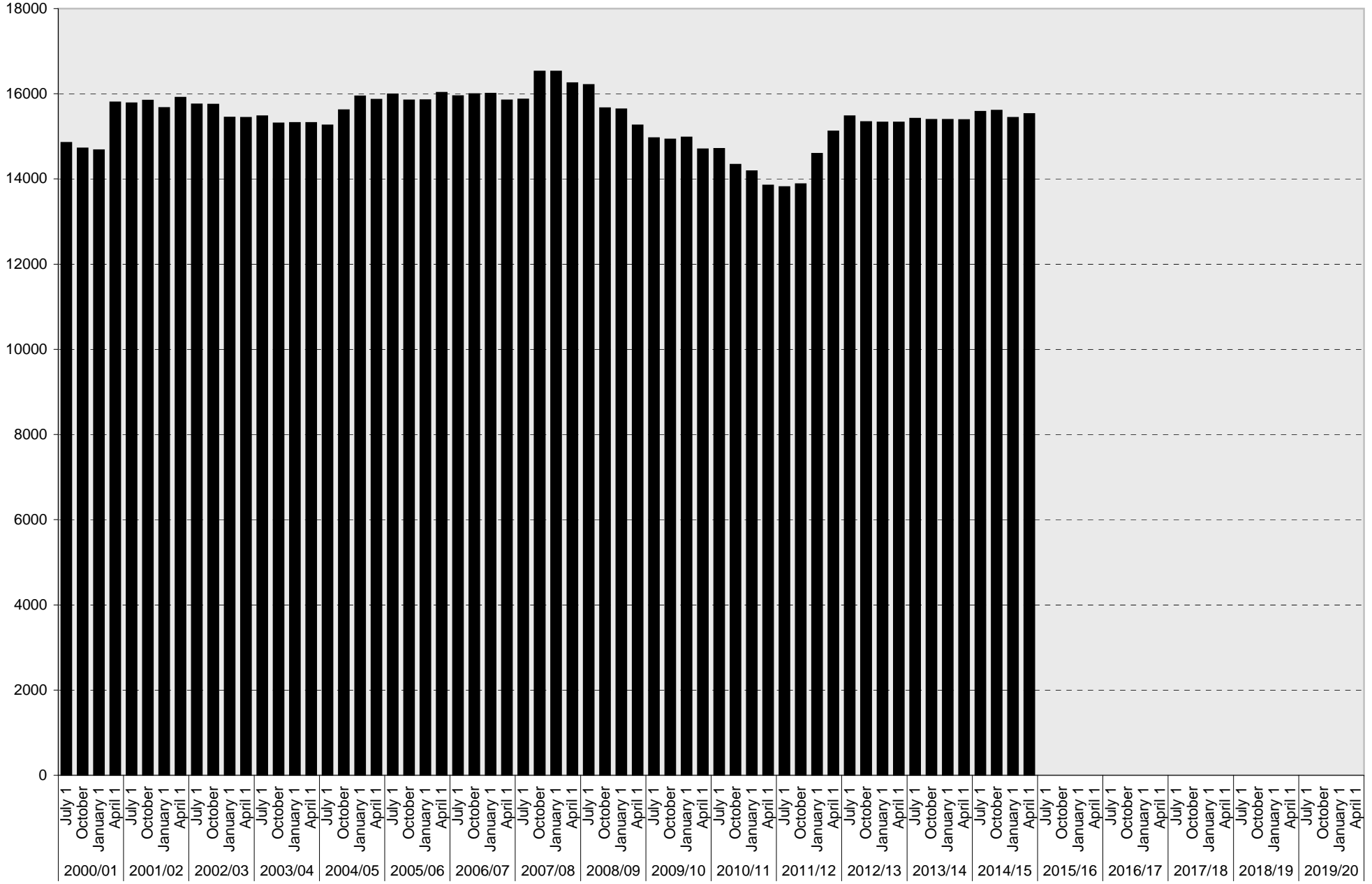
La Jolla Campus: Loading Parking Spaces



■ Loading

University of California, San Diego Parking Space Inventory

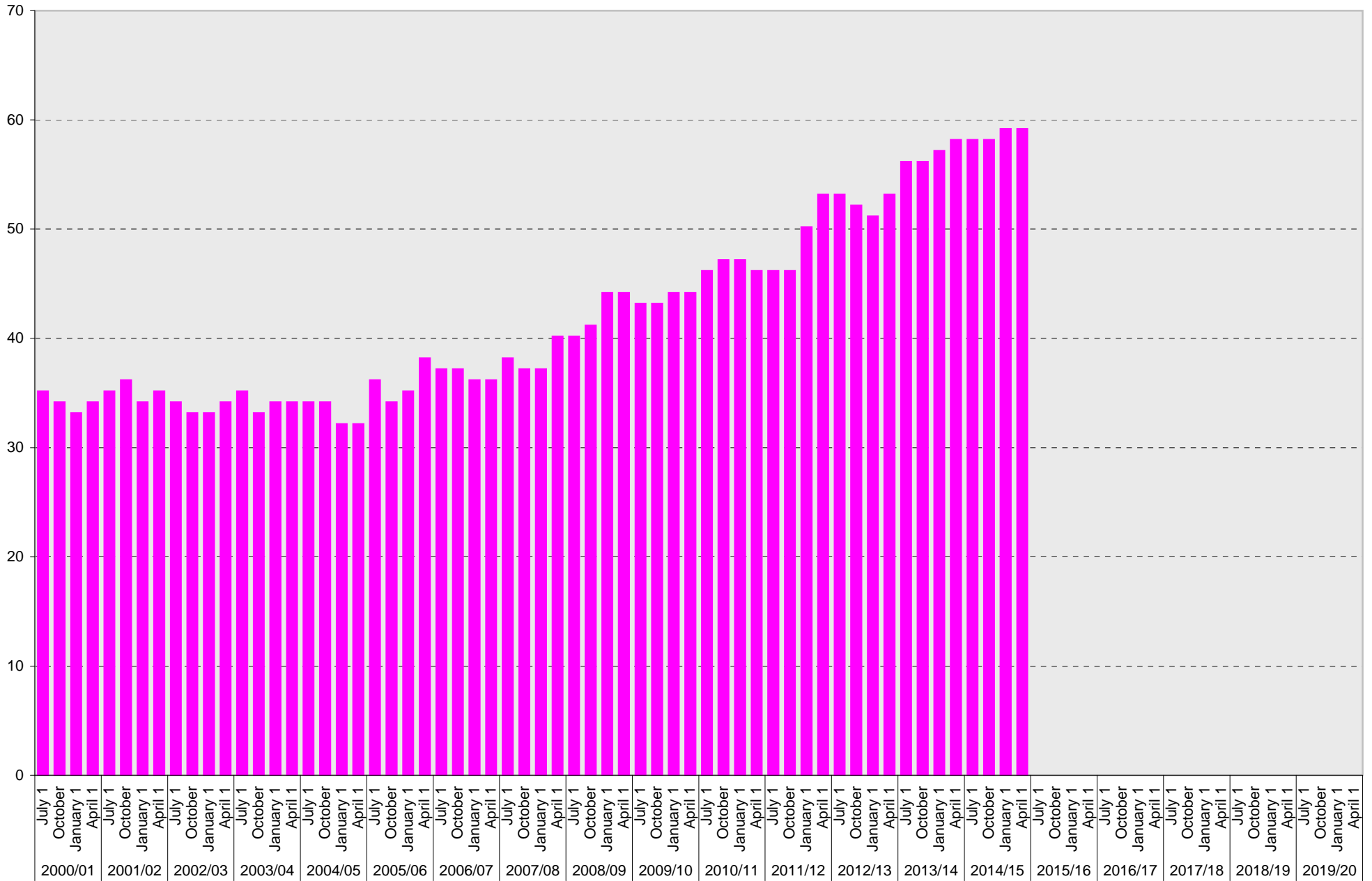
La Jolla Campus: Total Parking Spaces



■ Total

University of California, San Diego Parking Space Inventory

La Jolla Campus: Motorcycle Parking Sections



Motorcycle

University of California, San Diego Parking Space Inventory
La Jolla Campus

Date		Parking Spaces											Motorcycle Parking Sections
		A	B	S	Visitor	Reserved	Allocated	Accessible	UC Vehicle	Service Yard	Loading	Total	
2000/01	July 1	1612	3407	7216	586	161	1128	237	191	156	109	14803	35
	October 1	1876	3480	6414	713	154	1203	253	342	133	107	14675	34
	January 1	1573	3517	6637	713	154	1188	258	341	136	114	14631	33
	April 1	1734	3906	7208	697	154	1178	282	349	135	113	15756	34
2001/02	July 1	1733	3905	7174	702	155	1174	282	354	142	115	15736	35
	October 1	1689	4051	7115	705	157	1178	288	350	146	118	15797	36
	January 1	1617	4072	7043	674	159	1179	284	342	134	117	15621	34
	April 1	1621	4140	7151	671	162	1224	302	338	136	119	15864	35
2002/03	July 1	1607	4128	7040	677	165	1192	297	340	134	126	15706	34
	October 1	1622	4126	7021	672	160	1210	303	325	138	127	15704	33
	January 1	1545	4204	6905	716	158	963	313	327	136	129	15396	33
	April 1	1570	4220	6852	717	160	947	313	334	146	133	15392	34
2003/04	July 1	1677	4290	6712	717	162	951	313	327	150	130	15429	35
	October 1	1575	4199	6704	718	172	955	321	340	147	131	15262	33
	January 1	1566	4005	6699	666	171	1201	324	350	151	137	15270	34
	April 1	1567	3997	6702	666	171	1201	324	351	151	140	15270	34
2004/05	July 1	1559	4001	6699	666	174	1192	323	309	149	142	15214	34
	October 1	1573	3993	7030	669	181	1197	331	305	153	140	15572	34
	January 1	1725	4496	6675	695	181	1198	332	300	159	135	15896	32
	April 1	1837	4491	6564	679	178	1264	329	180	161	133	15816	32
2005/06	July 1	1757	4452	6657	679	187	1406	344	179	145	137	15943	36
	October 1	1800	4448	6460	657	188	1374	343	220	153	157	15800	34
	January 1	1815	4453	6460	650	180	1376	343	220	153	155	15805	35
	April 1	1802	4716	6450	657	182	1314	350	203	150	156	15980	38
2006/07	July 1	1791	4709	6458	650	180	1278	341	200	142	150	15899	37
	October 1	1753	4781	6431	668	180	1320	341	186	141	146	15947	37
	January 1	1697	4896	6334	649	180	1362	343	208	143	146	15958	36
	April 1	1725	4800	6331	604	179	1323	351	209	135	145	15802	36
2007/08	July 1	1709	4835	6332	497	181	1428	354	207	136	144	15823	38
	October 1	1826	5305	6219	501	184	1579	380	206	136	144	16480	37
	January 1	1826	5290	6220	498	184	1580	380	219	135	144	16476	37
	April 1	1831	5179	6223	489	182	1461	380	220	121	119	16205	40
2008/09	July 1	1820	5141	6213	1138	185	827	377	220	123	122	16166	40
	October 1	1796	4889	5966	1118	195	824	371	220	112	126	15617	41
	January 1	1702	5046	5836	1113	203	845	383	219	123	122	15592	44
	April 1	1702	4670	5825	1113	207	850	383	217	120	126	15213	44
2009/10	July 1	1694	4492	5673	1119	209	882	388	216	119	123	14915	43
	October 1	1701	4767	5315	1165	217	866	407	202	119	123	14882	43
	January 1	1728	4807	5314	1104	219	879	429	214	124	114	14932	44
	April 1	1774	4760	5037	1101	220	879	430	211	123	120	14655	44

