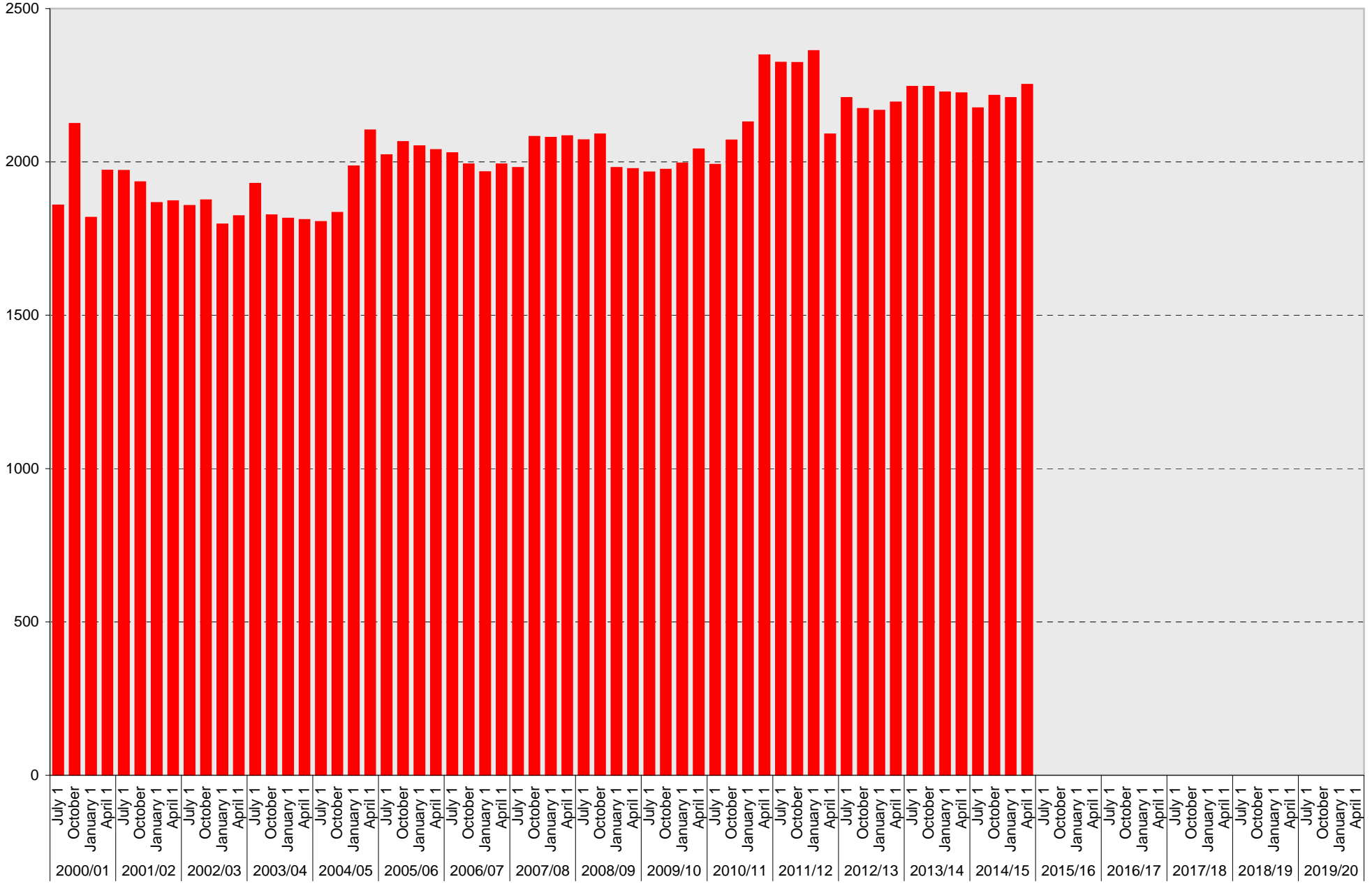


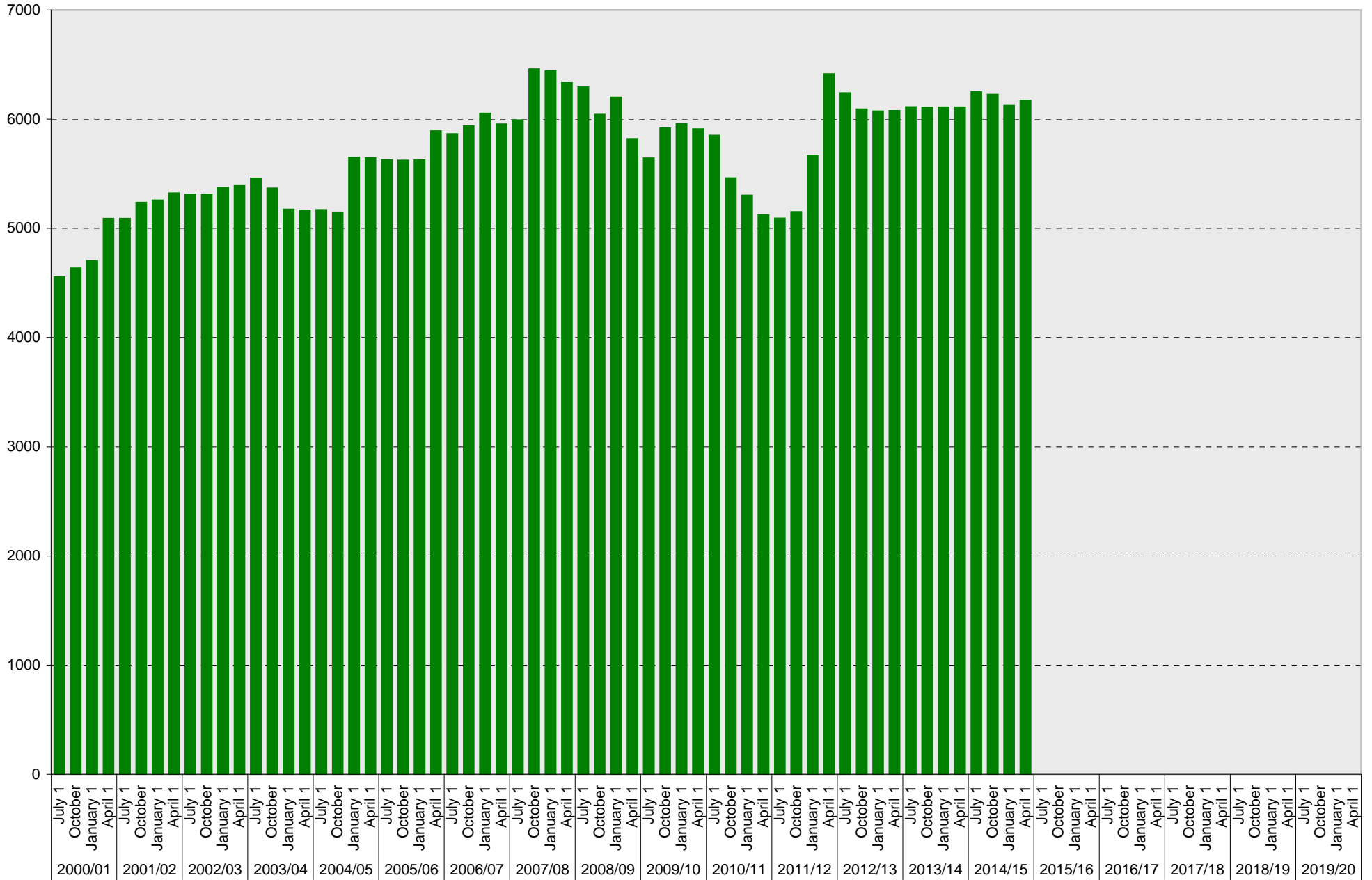
University of California, San Diego Parking Space Inventory

University of California, San Diego: A Parking Spaces



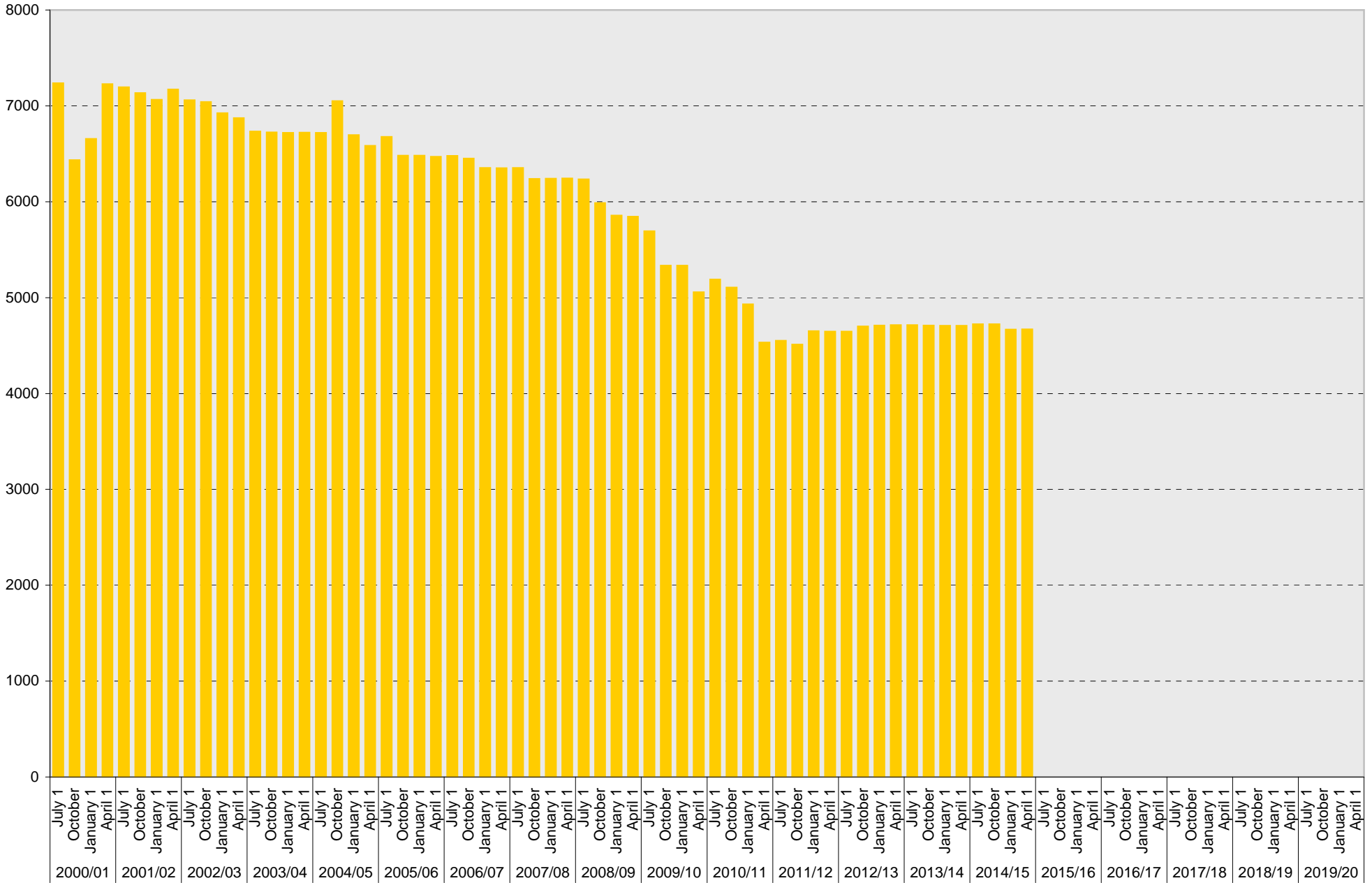
■ A

University of California, San Diego Parking Space Inventory
 University of California, San Diego: B Parking Spaces



■ B

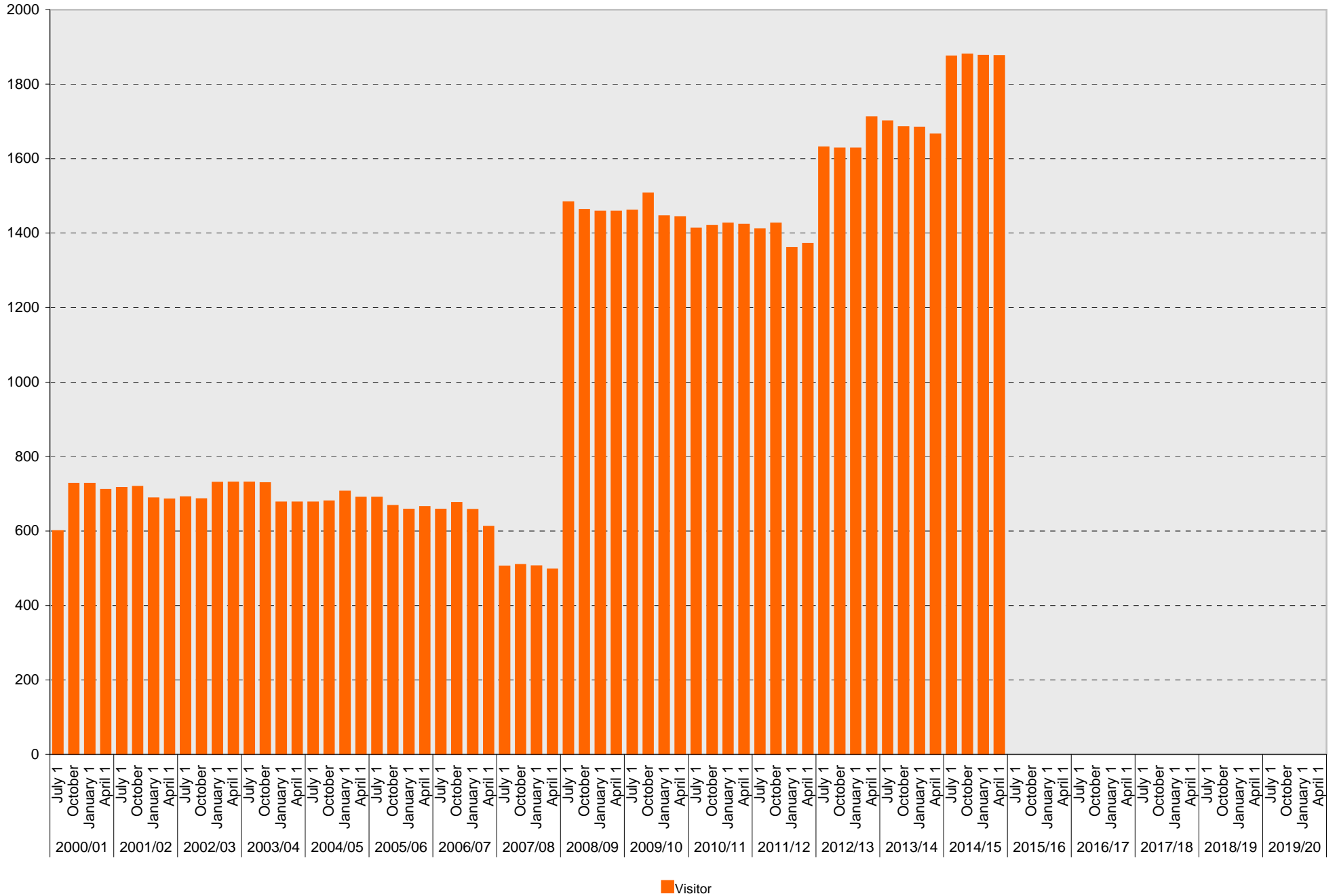
University of California, San Diego Parking Space Inventory
 University of California, San Diego: S Parking Spaces



■ s

University of California, San Diego Parking Space Inventory

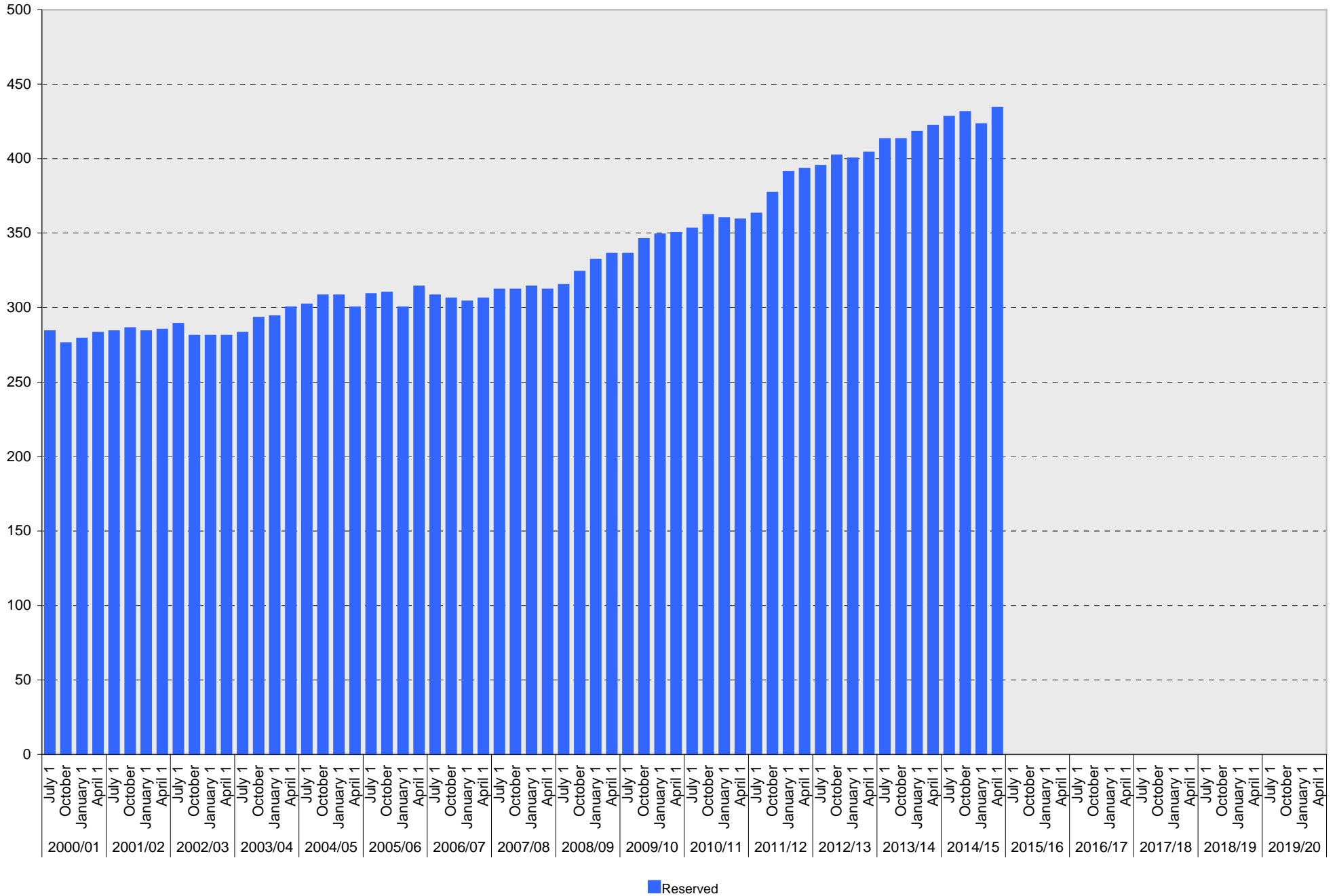
University of California, San Diego: Visitor Parking Spaces



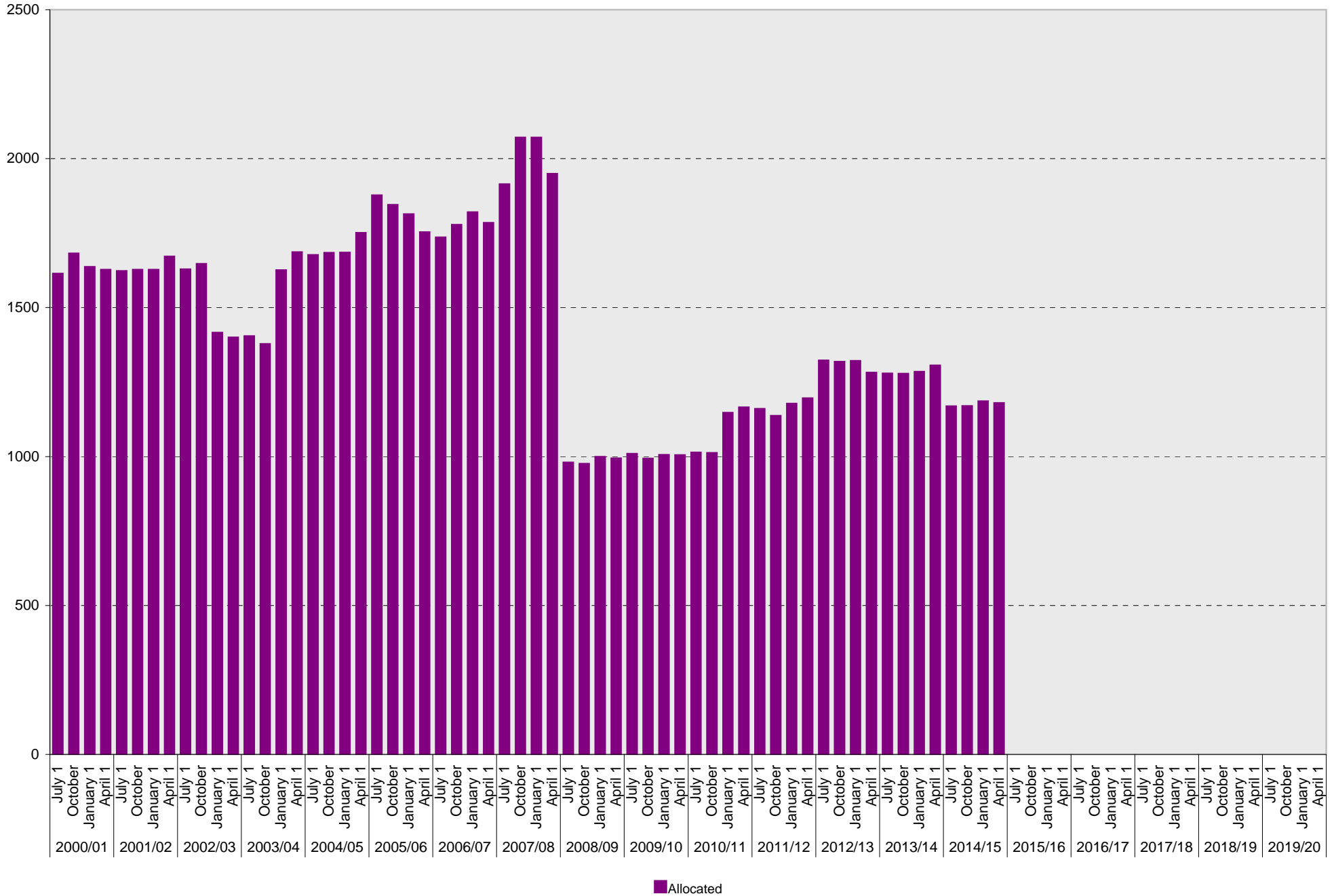
Visitor

University of California, San Diego Parking Space Inventory

University of California, San Diego: Reserved Parking Spaces

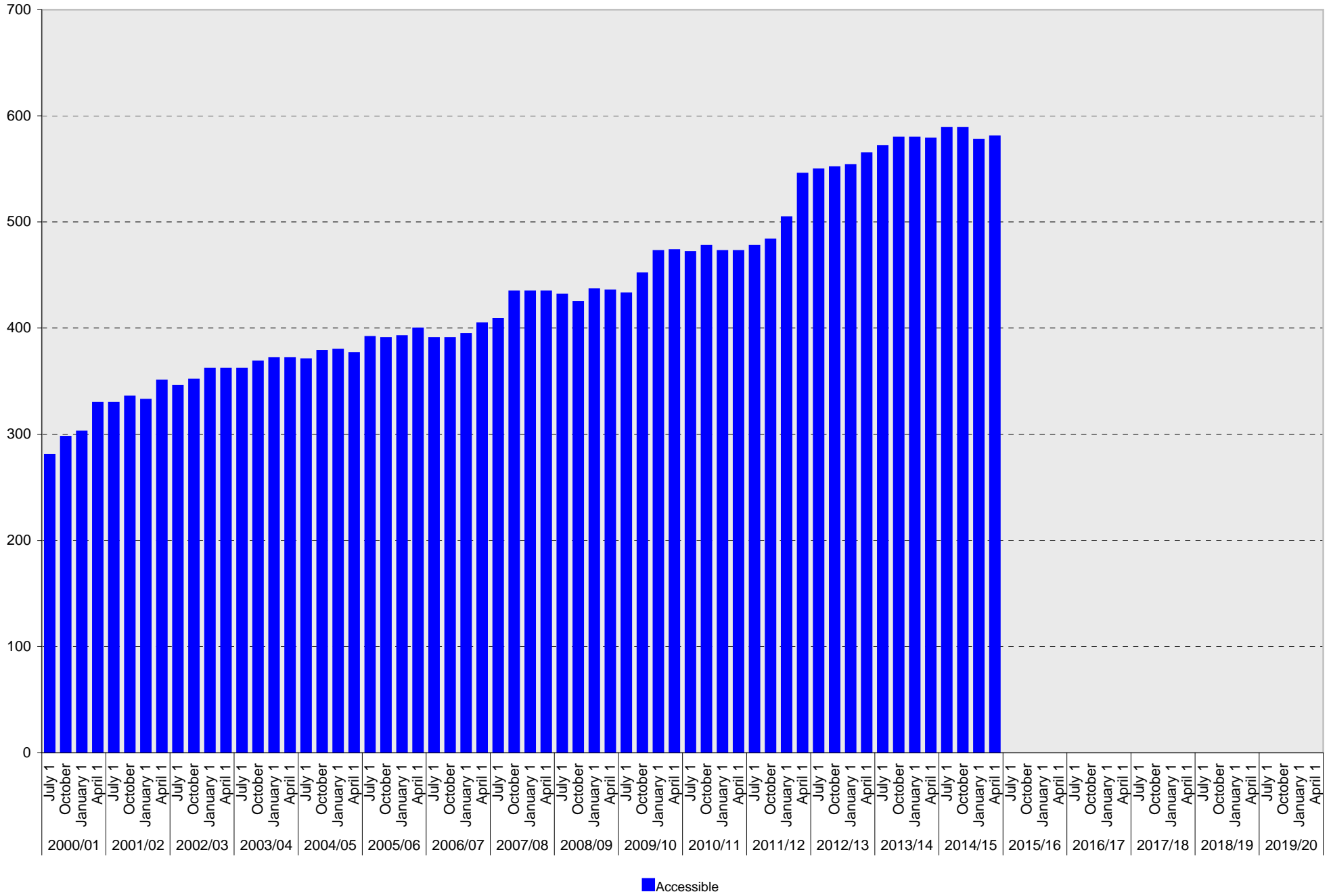


University of California, San Diego Parking Space Inventory
 University of California, San Diego: Allocated Parking Spaces

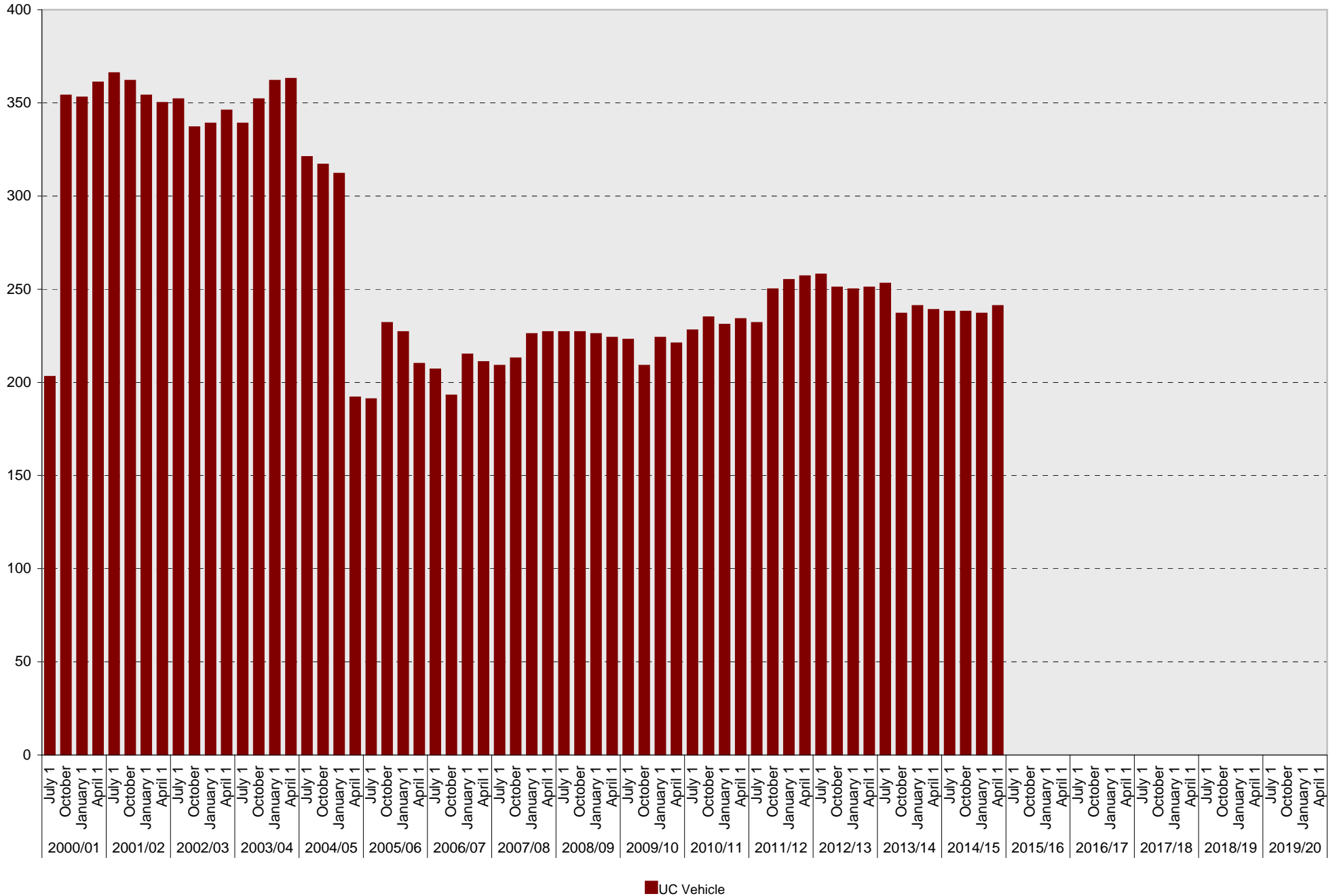


University of California, San Diego Parking Space Inventory

University of California, San Diego: Accessible Parking Spaces

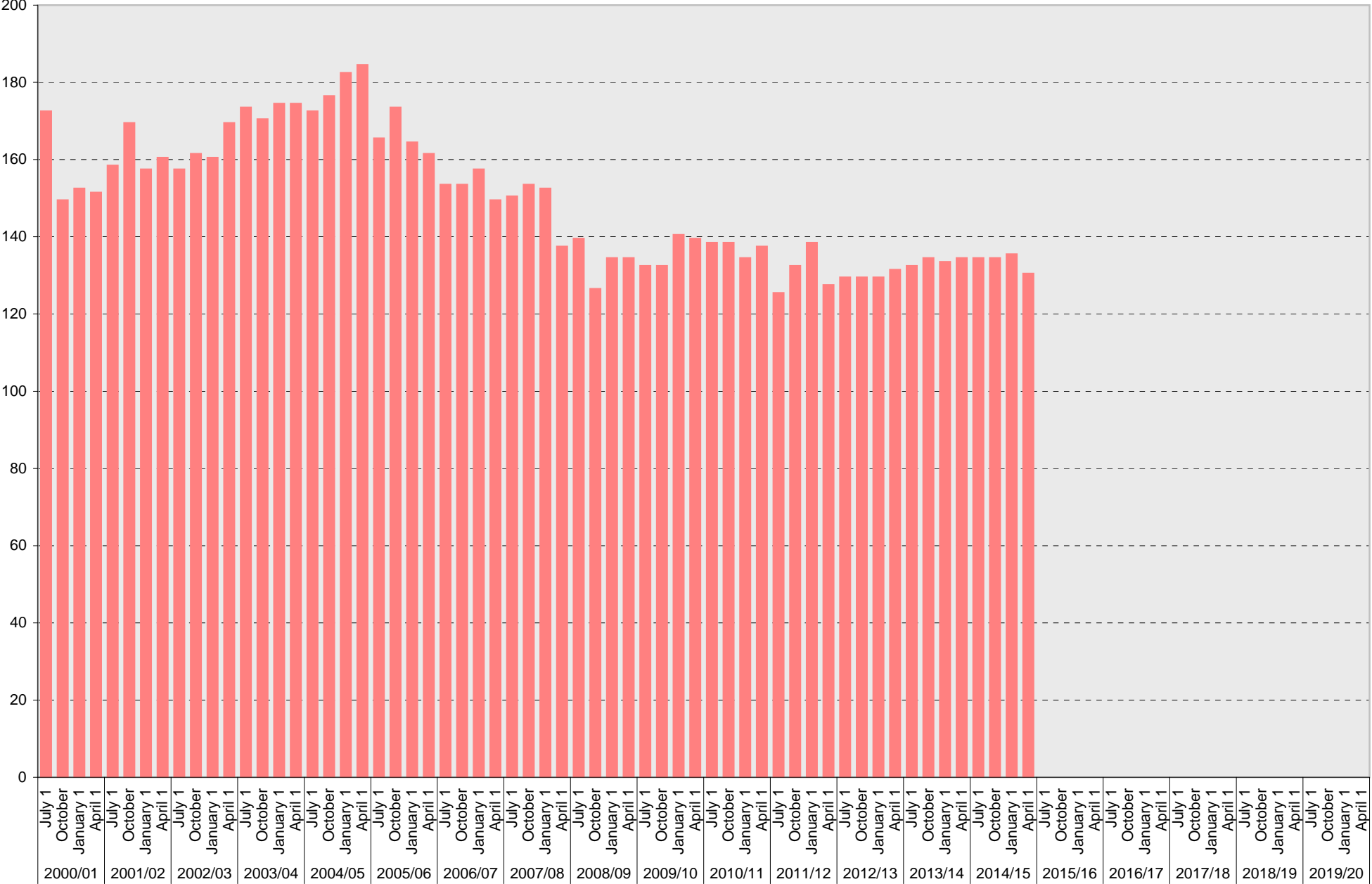


University of California, San Diego Parking Space Inventory
University of California, San Diego: UC Vehicle Parking Spaces



University of California, San Diego Parking Space Inventory

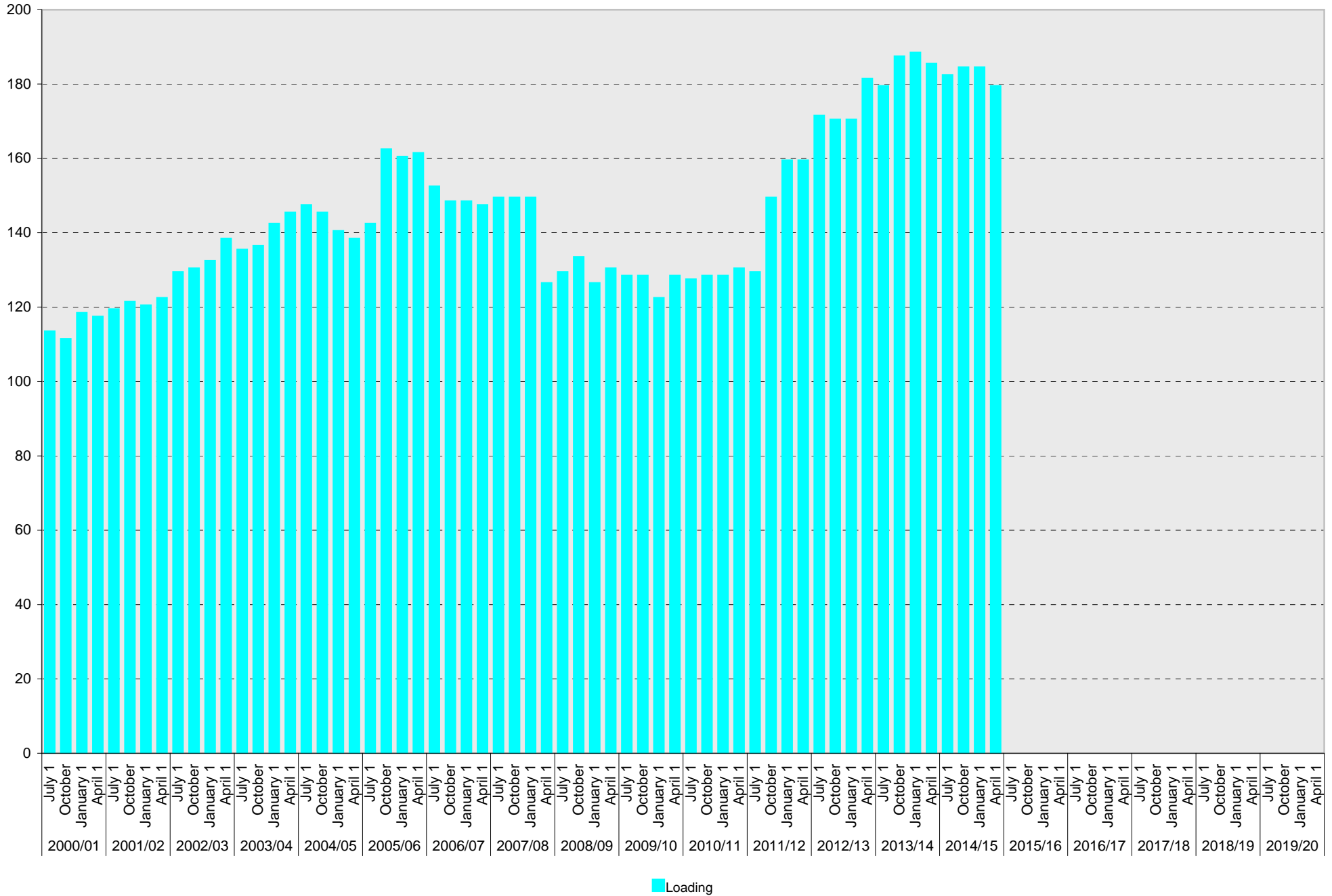
University of California, San Diego: Service Yard Parking Spaces



■ Service Yard

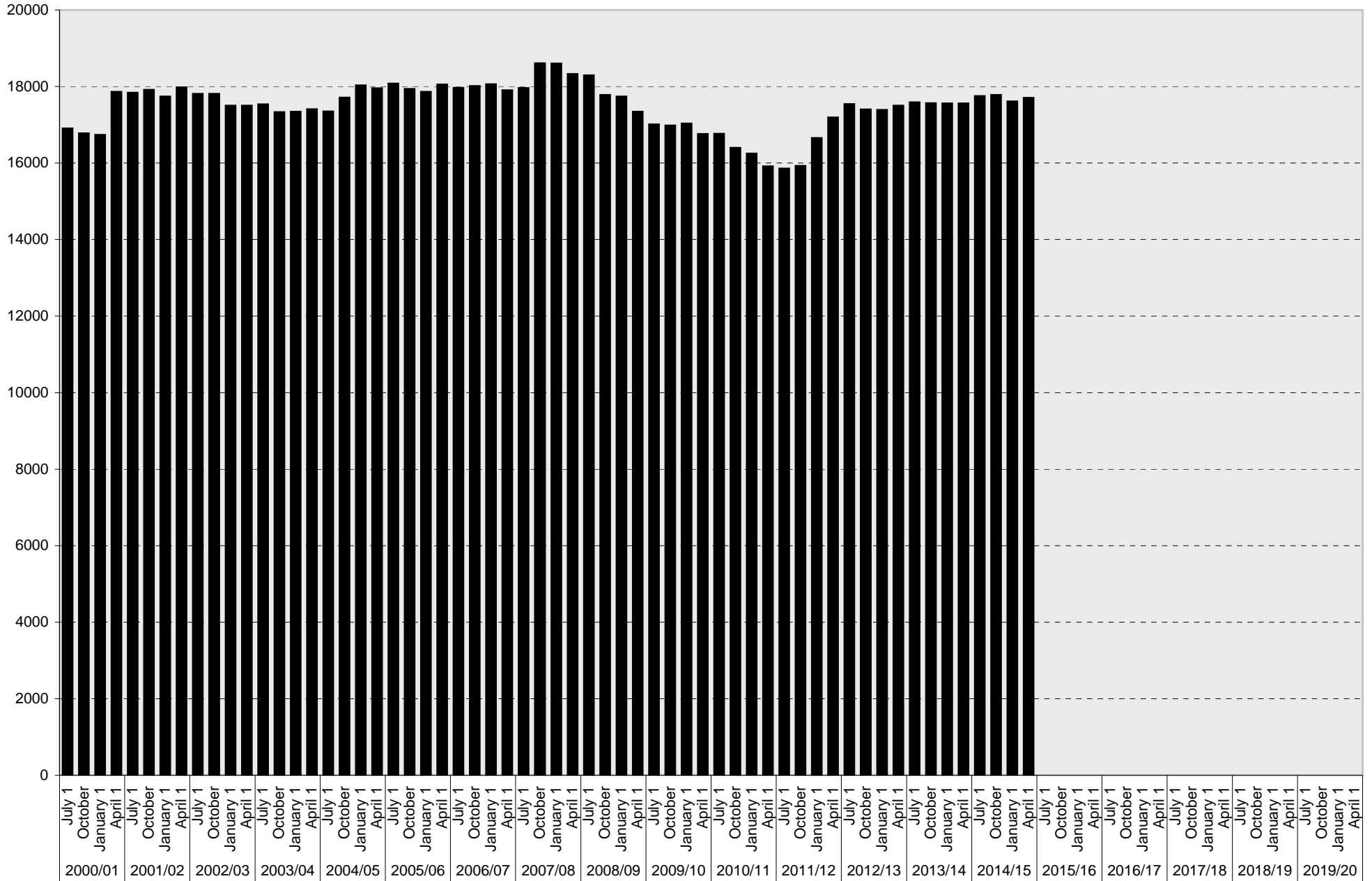
University of California, San Diego Parking Space Inventory

University of California, San Diego: Loading Parking Spaces



University of California, San Diego Parking Space Inventory

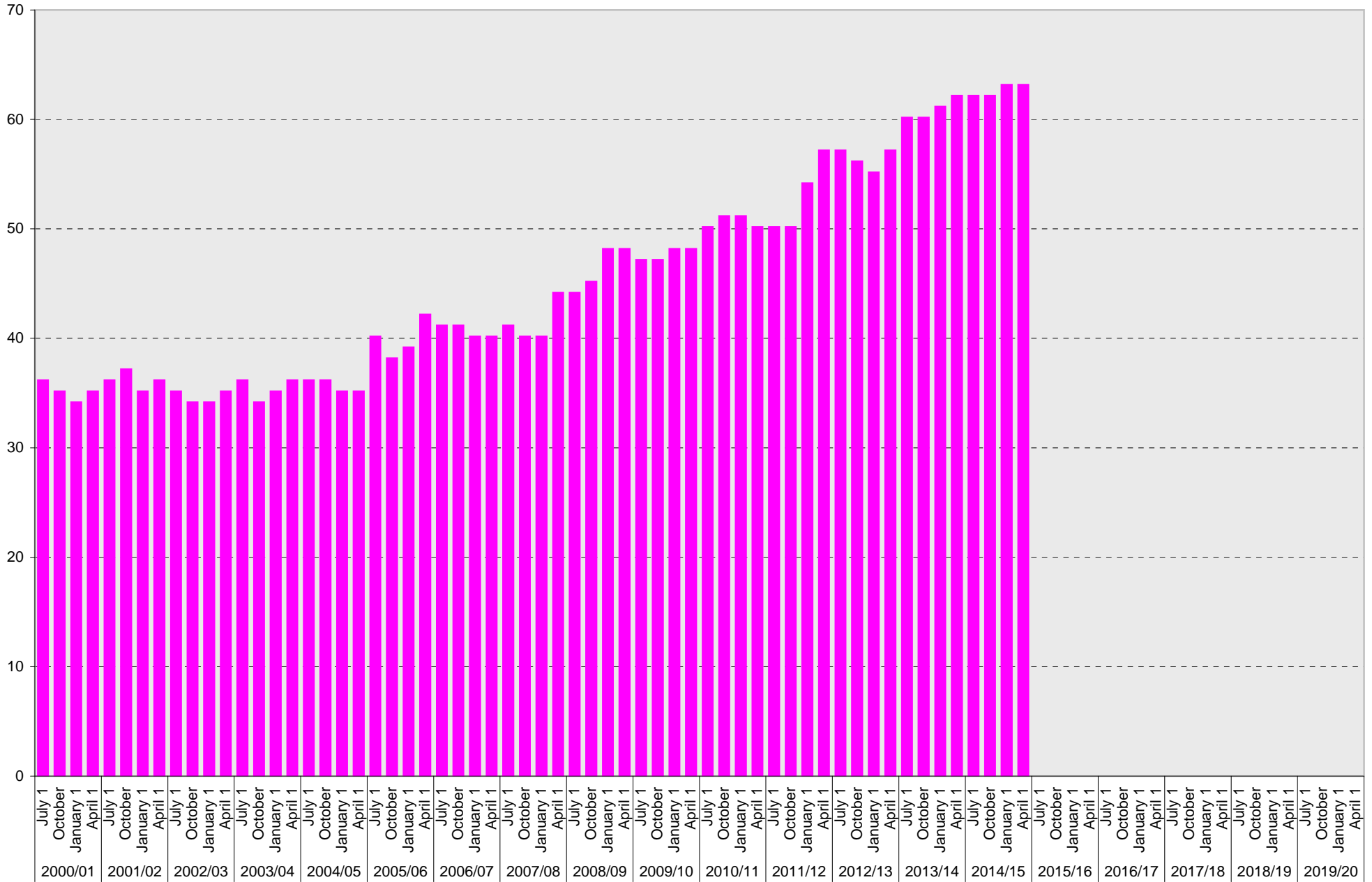
University of California, San Diego: Total Parking Spaces



■ Total

University of California, San Diego Parking Space Inventory

University of California, San Diego: Motorcycle Parking Sections



Motorcycle

University of California, San Diego Parking Space Inventory
University of California, San Diego

Date		Parking Spaces											Motorcycle Parking Sections
		A	B	S	Visitor	Reserved	Allocated	Accessible	UC Vehicle	Service Yard	Loading	Total	
2000/01	July 1	1852	4538	7216	595	283	1608	279	202	172	113	16858	36
	October 1	2118	4617	6414	722	275	1676	296	353	149	111	16731	35
	January 1	1812	4684	6637	722	278	1631	301	352	152	118	16687	34
	April 1	1966	5073	7208	706	282	1621	328	360	151	117	17812	35
2001/02	July 1	1965	5072	7174	711	283	1617	328	365	158	119	17792	36
	October 1	1928	5218	7115	714	285	1621	334	361	169	121	17866	37
	January 1	1860	5239	7043	683	283	1621	331	353	157	120	17690	35
	April 1	1866	5305	7151	680	284	1666	349	349	160	122	17932	36
2002/03	July 1	1851	5293	7040	686	288	1623	344	351	157	129	17762	35
	October 1	1869	5293	7021	681	280	1641	350	336	161	130	17762	34
	January 1	1790	5355	6905	725	280	1410	360	338	160	132	17455	34
	April 1	1817	5371	6852	726	280	1394	360	345	169	138	17452	35
2003/04	July 1	1923	5441	6712	726	282	1398	360	338	173	135	17488	36
	October 1	1820	5350	6704	724	292	1372	367	351	170	136	17286	34
	January 1	1809	5156	6699	672	293	1620	370	361	174	142	17296	35
	April 1	1805	5148	6702	672	299	1680	370	362	174	145	17357	36
2004/05	July 1	1798	5152	6699	672	301	1671	369	320	172	147	17301	36
	October 1	1828	5129	7030	675	307	1678	377	316	176	145	17661	36
	January 1	1980	5632	6675	701	307	1679	378	311	182	140	17985	35
	April 1	2097	5627	6564	685	299	1745	375	191	184	138	17905	35
2005/06	July 1	2016	5608	6657	685	308	1871	390	190	165	142	18032	40
	October 1	2059	5604	6460	663	309	1839	389	231	173	162	17889	38
	January 1	2045	5609	6460	653	299	1808	391	226	164	160	17815	39
	April 1	2033	5874	6450	660	313	1747	398	209	161	161	18006	42
2006/07	July 1	2023	5848	6458	653	307	1730	389	206	153	152	17919	41
	October 1	1986	5920	6431	671	305	1772	389	192	153	148	17967	41
	January 1	1961	6035	6334	652	303	1814	393	214	157	148	18011	40
	April 1	1986	5938	6331	607	305	1779	403	210	149	147	17855	40
2007/08	July 1	1975	5973	6332	500	311	1908	407	208	150	149	17913	41
	October 1	2076	6440	6219	504	311	2065	433	212	153	149	18562	40
	January 1	2073	6425	6220	501	313	2065	433	225	152	149	18556	40
	April 1	2078	6314	6223	492	311	1943	433	226	137	126	18283	44
2008/09	July 1	2065	6276	6213	1478	314	974	430	226	139	129	18244	44
	October 1	2084	6024	5966	1458	323	970	423	226	126	133	17733	45
	January 1	1975	6181	5836	1453	331	993	435	225	134	126	17689	48
	April 1	1971	5803	5825	1453	335	988	434	223	134	130	17296	48
2009/10	July 1	1960	5625	5673	1456	335	1003	431	222	132	128	16965	47
	October 1	1969	5900	5315	1502	345	987	450	208	132	128	16936	47
	January 1	1989	5940	5314	1441	348	1000	471	223	140	122	16988	48
	April 1	2035	5893	5037	1438	349	999	472	220	139	128	16710	48

